

Street Improvements to Serve  
**TOWNE PARC 3rd ADDITION**  
**PHASE 1**

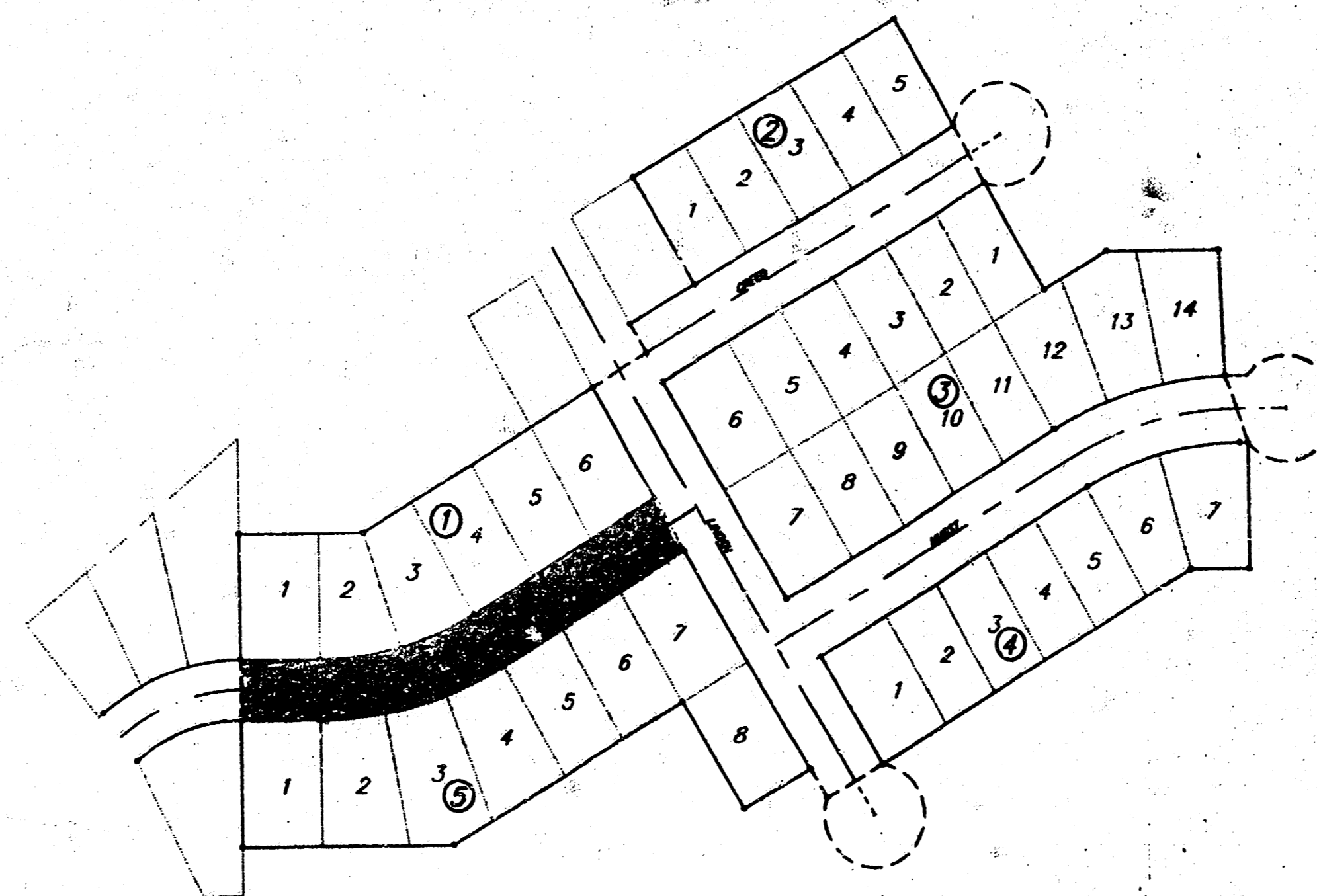
**HURST:** From the W.L. Towne Parc 3rd Addition to the W.L. Linden

Private Project Number  
**059 PPP (607879)**

CITY OF WICHITA, KANSAS  
 Michael E. Lindebak City Engineer

**General Notes**

1. The Contractor shall be responsible for preserving property irons. The Contractor will be required to re-establish any property irons which are disturbed by its construction operations. Such irons shall be re-established by a licensed land surveyor in accordance with state laws.
2. The Contractor shall install or valve boxes as necessary as directed by the engineer. Any such adjustments shall be made to the project. Water valves, valves boxes and other items damaged during construction shall be repaired by the Contractor at his own expense.
3. Traffic will not be affected by this project.



Project Area



SCALE: 1" = 150'

**Sheet Index**

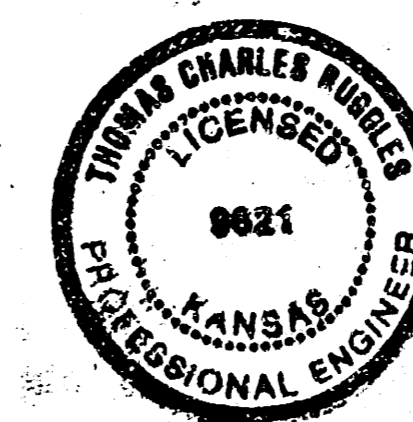
- 1 TITLE SHEET
- 2 TYPICAL SECTION
- 3 PAVING PLAN
- 4 TEMPORARY DITCH PLAN
- 5 TEMPORARY DETENTION DIKE PLAN

APPROVED AS NOTED  
 By CITY ENGINEER OF WICHITA

Sanitary Sewers \_\_\_\_\_  
 Storm Sewers \_\_\_\_\_  
 Driveway Approaches \_\_\_\_\_  
 Water Mains \_\_\_\_\_  
 Paving: VRH 10/26/90

**NOTE TO CONTRACTOR**

INSPECTION AND TESTING FOR THIS PROJECT IS TO BE PROVIDED BY A LICENSED CONSULTING ENGINEERING FIRM UNDER CONTRACT WITH THE OWNER/DEVELOPER. SAID INSPECTION TO BE IN ACCORDANCE WITH THE CITY OF WICHITA STANDARD CONSTRUCTION ENGINEERING PRACTICES AND CERTIFIED BY A LICENSED PROFESSIONAL ENGINEER. NO WORK SHALL BE PERFORMED IN DEDICATED EASEMENTS OR PUBLIC RIGHT-OF-WAY BY THE CONTRACTOR WITHOUT SUCH INSPECTION NOR SHALL ANY WORK BE COMMENCED WITHOUT WRITTEN AUTHORIZATION BY THE CITY ENGINEER.

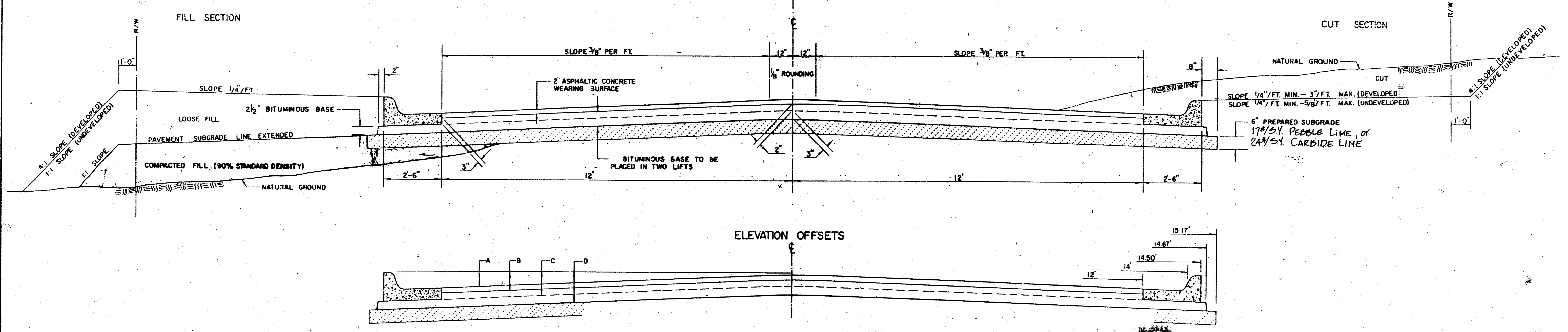


115  
**BAUGHMAN COMPANY P. A.**  
 ENGINEERING & SURVEYING  
316/267-7271 • 315 11th St. • WICHITA, KANSAS 67211

**FILMED FROM THE BEST AVAILABLE COPY**

# TYPICAL 29' PAVEMENT DETAILS

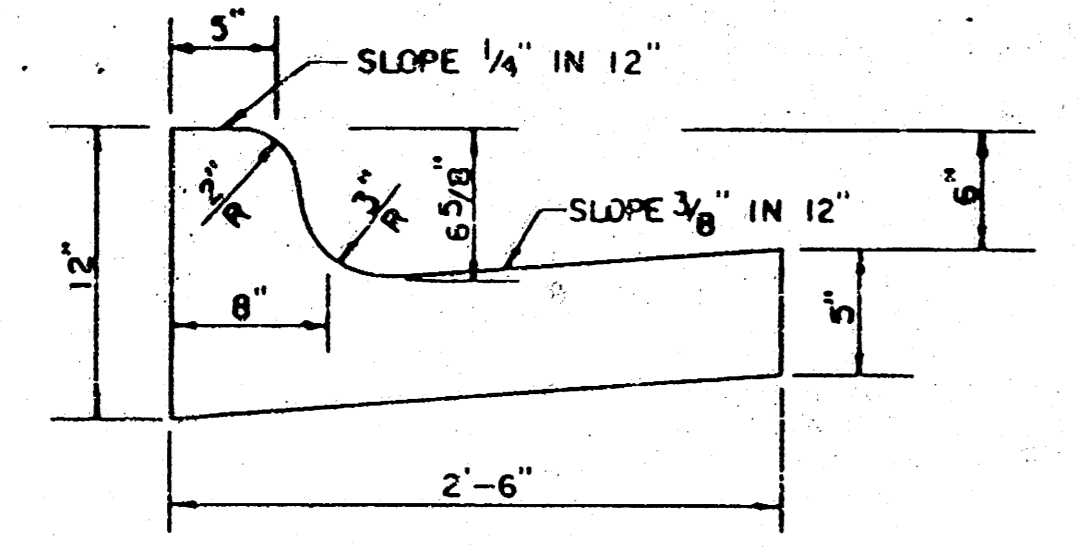
## TRANSVERSE SECTION



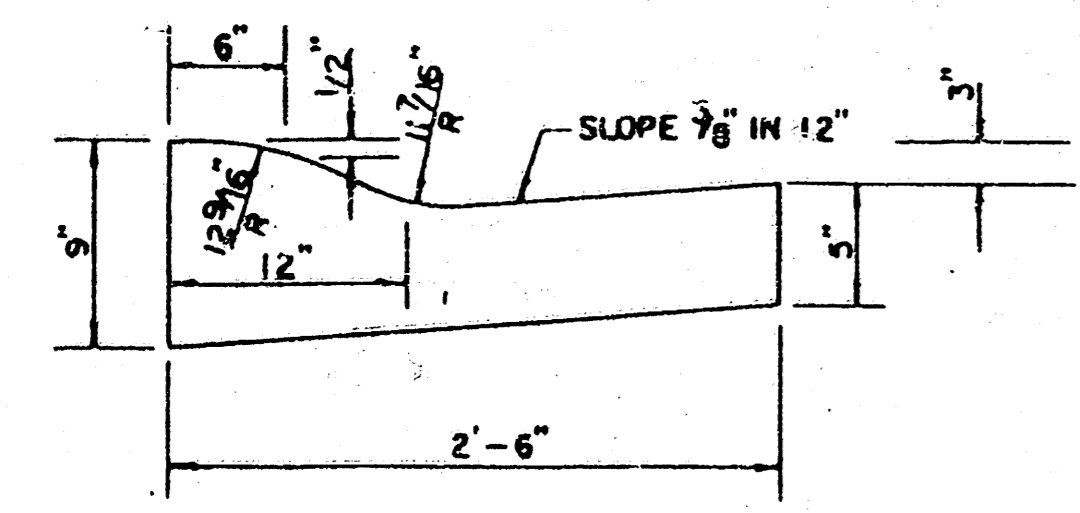
## ELEVATION OFFSETS

	DISTANCE FROM CENTERLINE (LT. & RT.)												
	0'	2'	4'	6'	7'	8'	10'	12'	14'	14.5'	14.67'	15.17'	
A: TOP OF CURBS TO TOP OF SURFACE LIFT	0.13	0.18	0.24	0.30	0.33	0.36	0.43	0.49	—	—	—	—	
B: TOP OF CURBS TO TOP OF UPPER BASE LIFT	0.30	0.35	0.41	0.47	0.50	0.53	0.60	0.66	—	—	—	—	
C: TOP OF CURBS TO TOP OF LOWER BASE LIFT	0.47	0.52	0.60	0.68	0.71	0.75	0.83	0.90	0.98	1.00	1.01	—	
D: TOP OF CURBS TO TOP OF SUBGRADE	0.72	0.77	0.84	0.91	0.94	0.98	1.05	1.12	1.19	1.21	1.21	1.23	

## COMBINED CURB & GUTTER



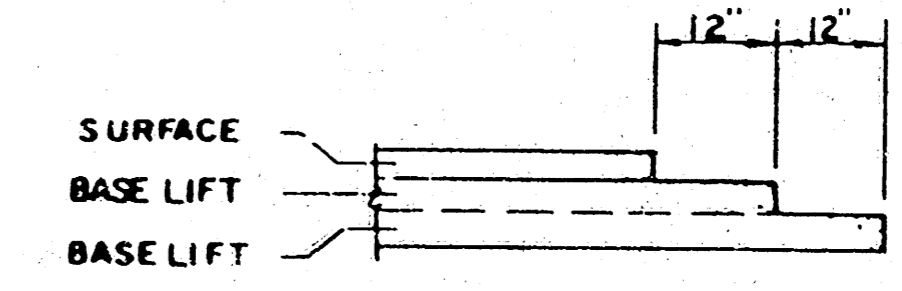
## ROLL TYPE COMBINED CURB & GUTTER



## GENERAL NOTES

- 1) THE ASPHALTIC CONCRETE PAVEMENT BETWEEN THE COMBINED CURB AND GUTTER SHALL BE PAID AS SQUARE YARDS OF 7" ASPHALTIC CONCRETE (5" BITUMINOUS BASE).
- 2) THE BITUMINOUS BASE UNDER AND BEHIND THE COMBINED CURB AND GUTTER SHALL BE PAID AS SQUARE YARDS OF 2 1/2" BITUMINOUS BASE.
- 3) A TACK COAT OF EMULSIFIED ASPHALT (SC-1H OR CSS-1H) SHALL BE APPLIED AT AN APPROXIMATE RATE OF .05 GALLONS PER SQUARE YARD BETWEEN EACH LIFT OF ASPHALTIC MATERIAL.
- 4) BITUMINOUS BASE AND ASPHALTIC CONCRETE WEARING SURFACE SHALL BE PLACED WITH A LAYDOWN MACHINE HAVING AUTOMATIC CONTROLS FOR LINE AND GRADE.
- 5) CONSTRUCTION JOINTS IN EACH LIFT SHALL BE STAGGERED A MINIMUM DISTANCE OF ONE (1) FOOT FROM JOINTS IN PRECEDING LIFTS AND PLACED SO THAT A JOINT WILL BE CONSTRUCTED ON THE CENTERLINE OF THE TOP LIFT.
- 6) CONTRACTOR TO BID ONLY ONE SUBGRADE TREATMENT ALTERNATE WHEN ALTERNATES ARE PROVIDED IN THE PROPOSAL AND CONTRACT. THE ALTERNATE CHOSEN BY THE SUCCESSFUL BIDDER SHALL BE USED IN CONSTRUCTING THIS PROJECT.

## TRANSVERSE CONSTRUCTION JOINTS

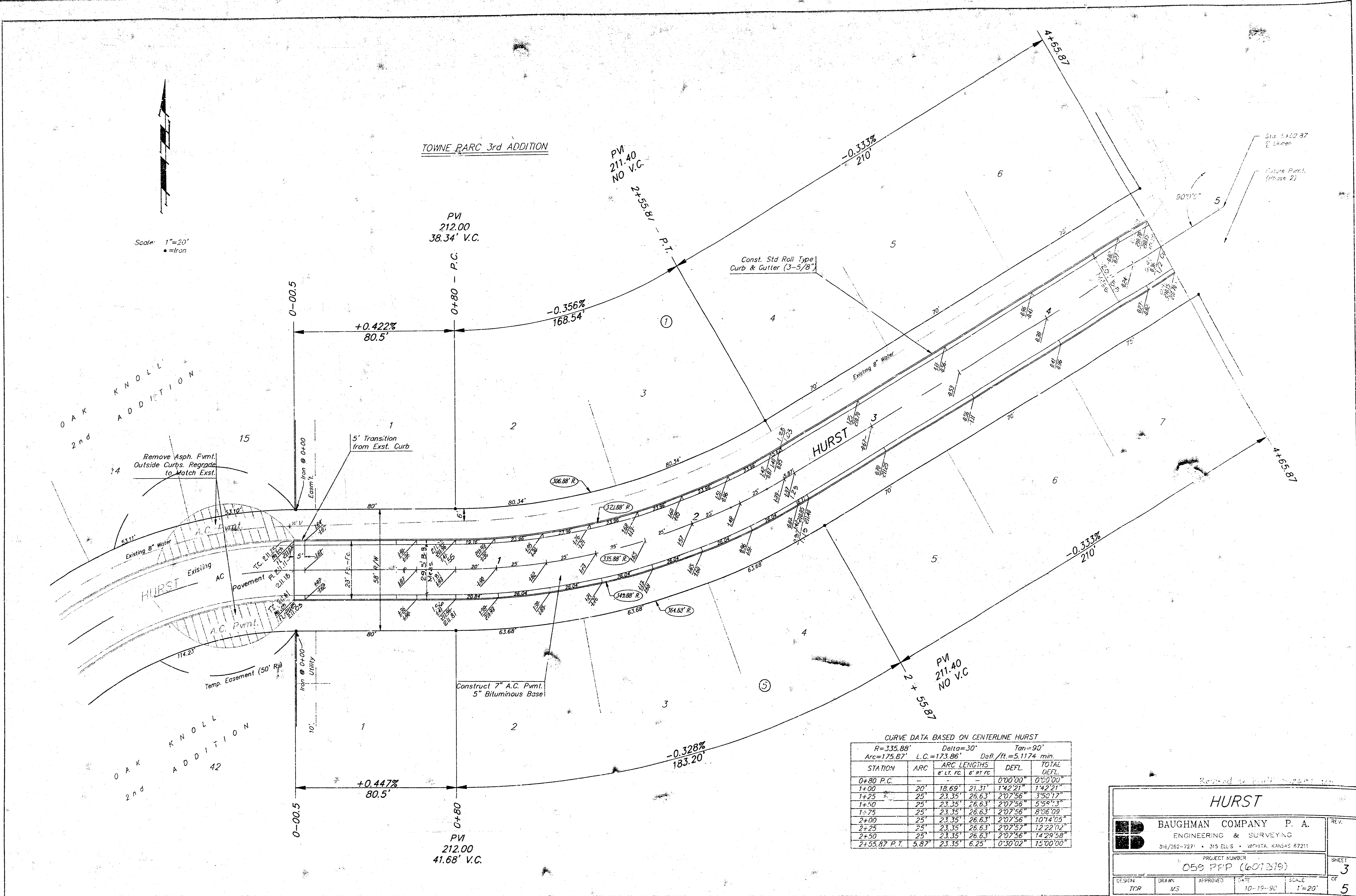


TRANSVERSE CONSTRUCTION JOINTS SHALL BE CONSTRUCTED IN FLEXIBLE BASE PAVEMENTS AT LOCATIONS WHERE PAVEMENT JOINS EXISTING FLEXIBLE BASE PAVEMENT AS SHOWN BY THE DETAIL. ALL COSTS ASSOCIATED WITH THE CONSTRUCTION OF THE TRANSVERSE JOINT SHALL BE INCLUDED IN THE BID PRICE FOR SQUARE YARDS 7" ASPHALTIC CONCRETE (5" BITUMINOUS BASE).

2 of 5  
 7 INCH RESIDENTIAL ASPHALTIC CONCRETE PAVEMENT WITH 5 INCH BITUMINOUS BASE  
 CITY OF WICHITA, KANSAS  
 PROJECT NUMBER  
 059 PPP (607879)

FILMED FROM THE BEST AVAILABLE COPY

Scale: 1"=20'  
●=Iron



CURVE DATA BASED ON CENTERLINE HURST

R=335.88' Delta=30° Tan=90'  
Arc=175.87' L.C.=173.86' Defl./ft.=5.1174 min

STATION	ARC	ARC LENGTHS		DEFL.	TOTAL DEFL.
		@ L.C.	@ RT. RC.		
0+80 P.C.	-	-	-	0°00'00"	0°00'00"
1+00	20'	18.69'	21.31'	1°42'21"	1°42'21"
1+25	25'	23.35'	26.63'	2°07'56"	3°50'17"
1+50	25'	23.35'	26.63'	2°07'56"	5°58'13"
1+75	25'	23.35'	26.63'	2°07'56"	8°06'09"
2+00	25'	23.35'	26.63'	2°07'56"	10°14'05"
2+25	25'	23.35'	26.63'	2°07'56"	12°22'02"
2+50	25'	23.35'	26.63'	2°07'56"	14°29'58"
2+55.87 P.T.	5.87'	23.35'	6.25'	0°30'02"	15°00'00"

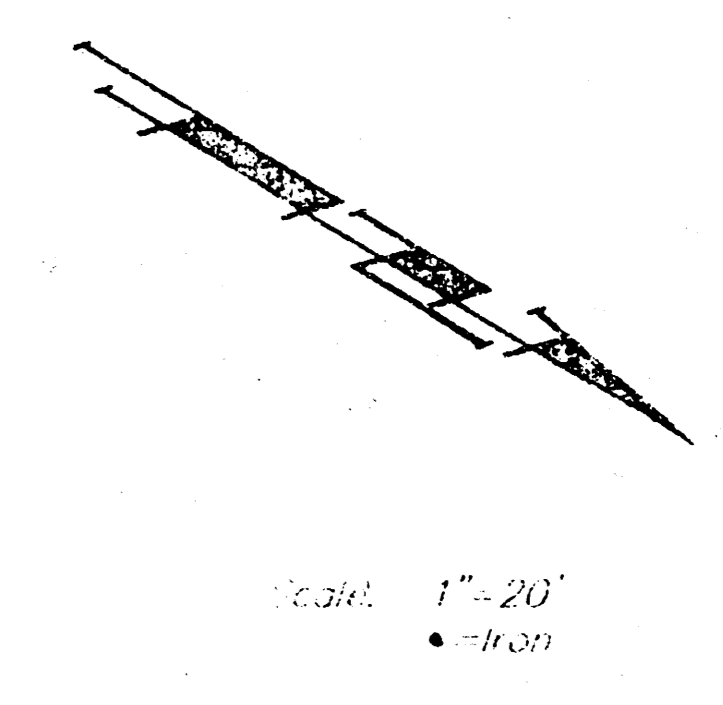
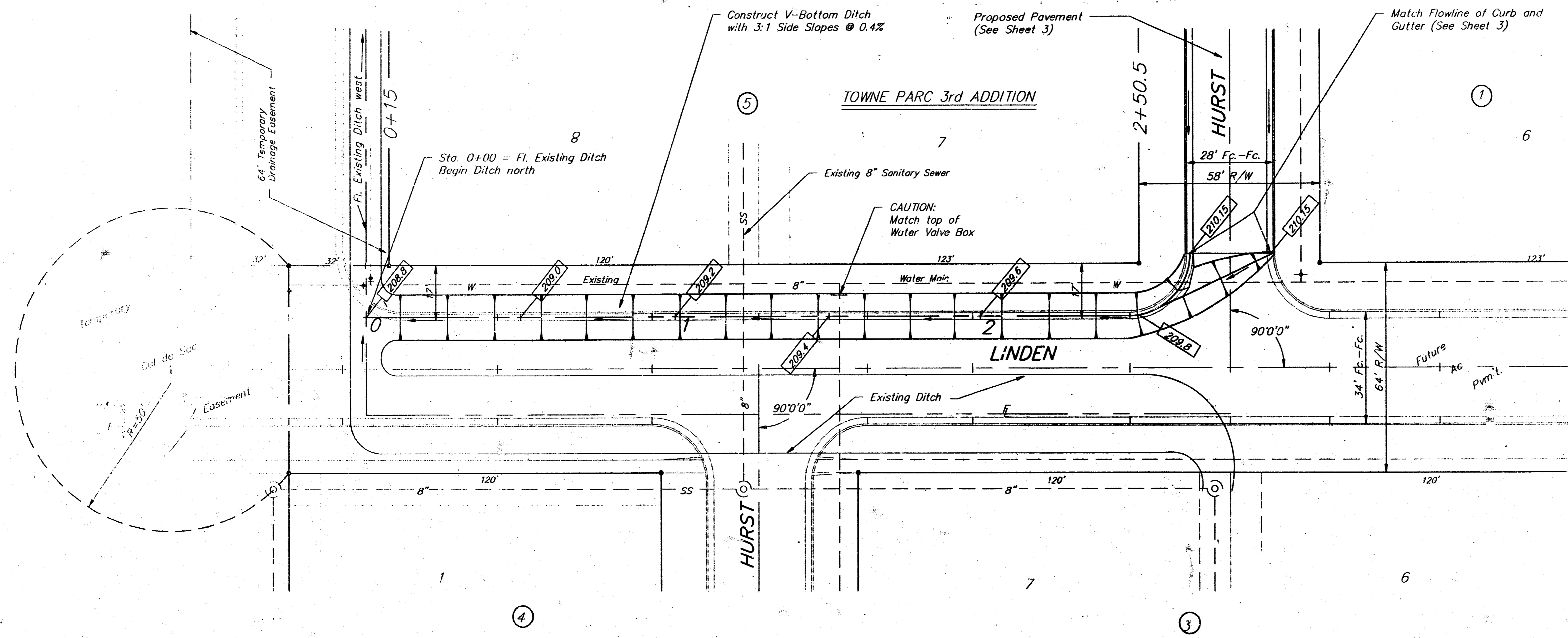
**HURST**

BAUGHMAN COMPANY P. A.  
ENGINEERING & SURVEYING  
316/262-7271 • 315 ELLIS • WICHITA, KANSAS 67211

PROJECT NUMBER  
**059 PPP (607379)**

DESIGN TCP	DRAWN MS	APPROVED	DATE 10-15-90	SCALE 1"=20'	REV.
					SHEET 3 OF 5

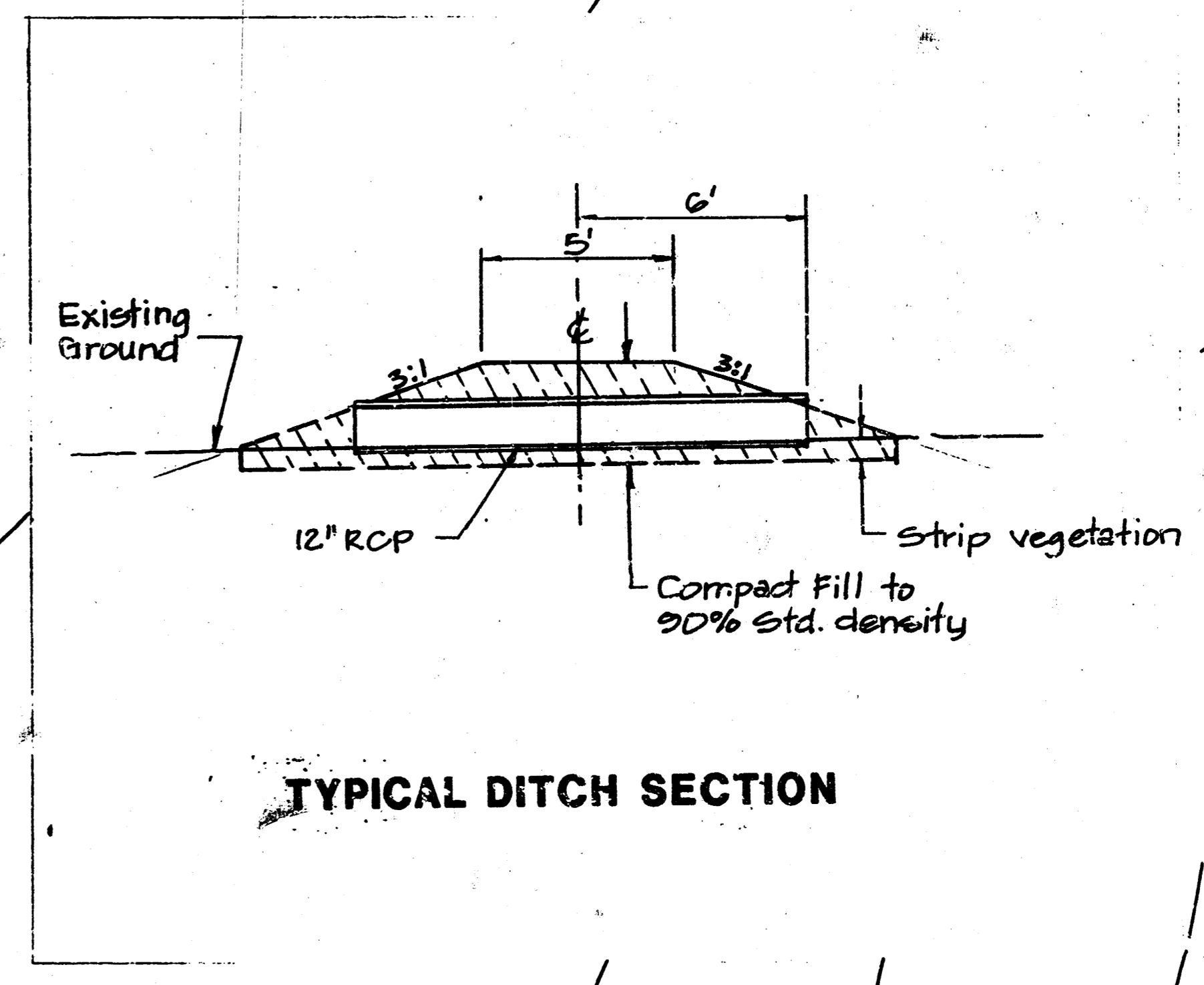
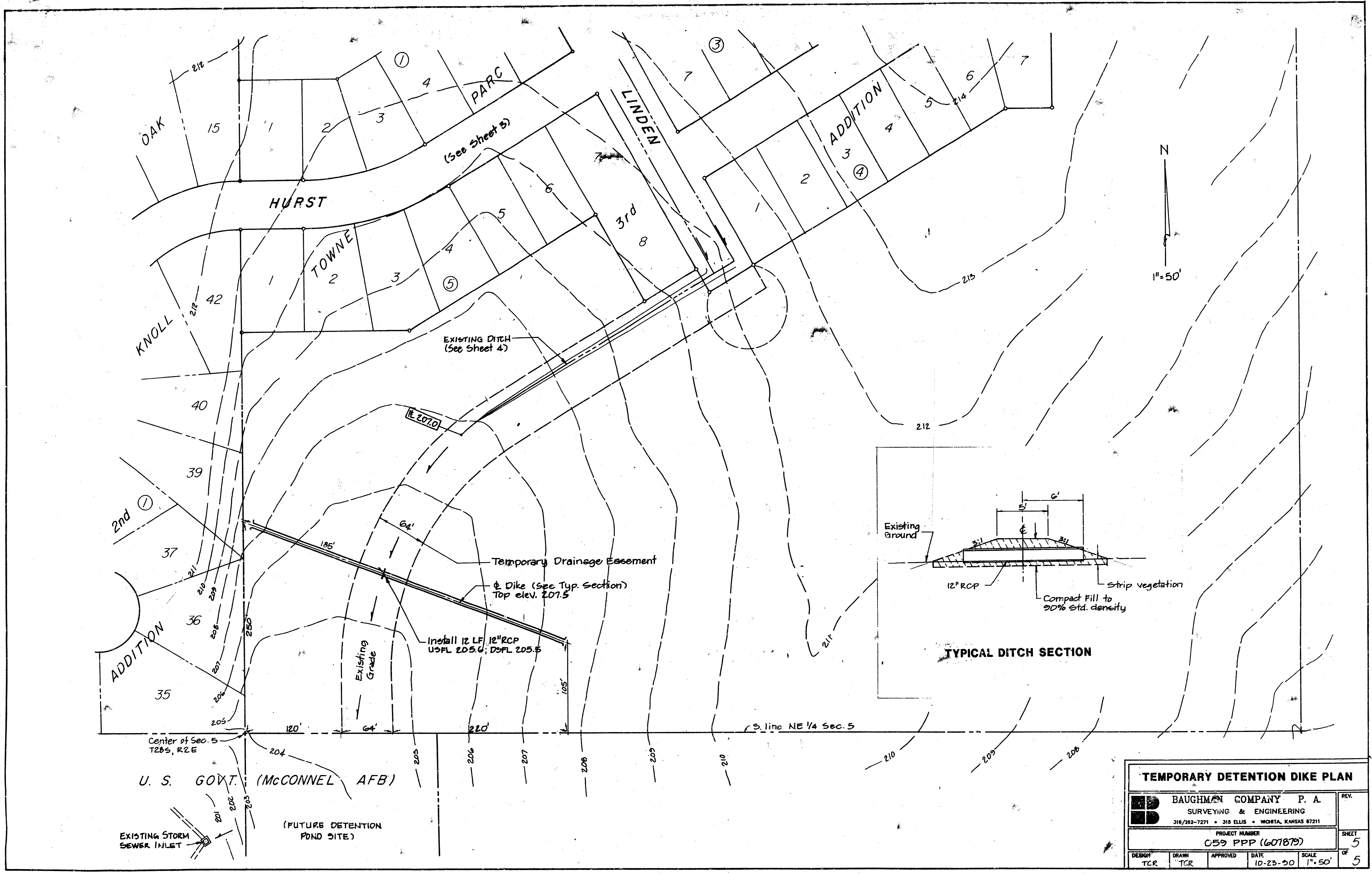
**FILMED FROM THE BEST AVAILABLE COPY**



1p.3/10/00-2

<b>TEMPORARY DITCH PLAN</b>				
<b>BAUGHMAN COMPANY P. A.</b> ENGINEERING & SURVEYING <small>1622 E. 22nd St. • Wichita, Kansas 67214</small>				
PROJECT NO. <b>059 PPP (607879)</b>				
DESIGN	DRAWN	CHECKED	DATE	SHEET
TCH	JLR	[Signature]	11-22-99	4
				5

**FILMED FROM THE BEST AVAILABLE COPY**



TEMPORARY DETENTION DIKE PLAN					
<b>BAUGHMAN COMPANY P. A.</b> SURVEYING & ENGINEERING <small>318/282-7271 • 318 ELLIS • WICHITA, KANSAS 67211</small>					REV.
PROJECT NUMBER <b>059 PPP (607879)</b>					SHEET 5
DESIGN TCR	DRAWN TCR	APPROVED	DATE 10-25-90	SCALE 1"=50'	OF 5

FILMED FROM THE BEST AVAILABLE COPY