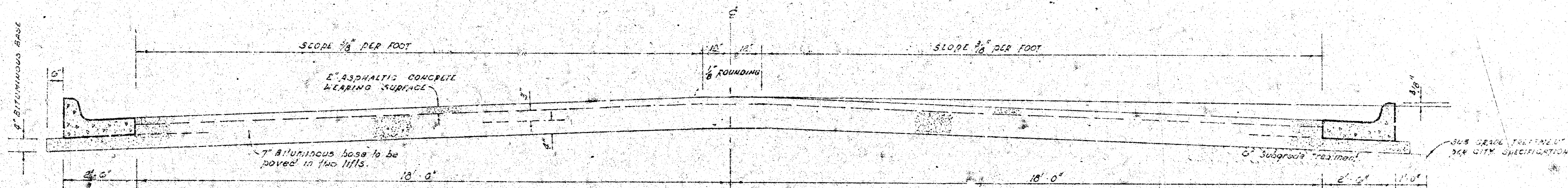


WOOD DRIVE
N. L. LOT 3, BLK. 9, WESTLINK VILLAGE 11th ADD'N-N. L. 17th ST.
DAKC574041



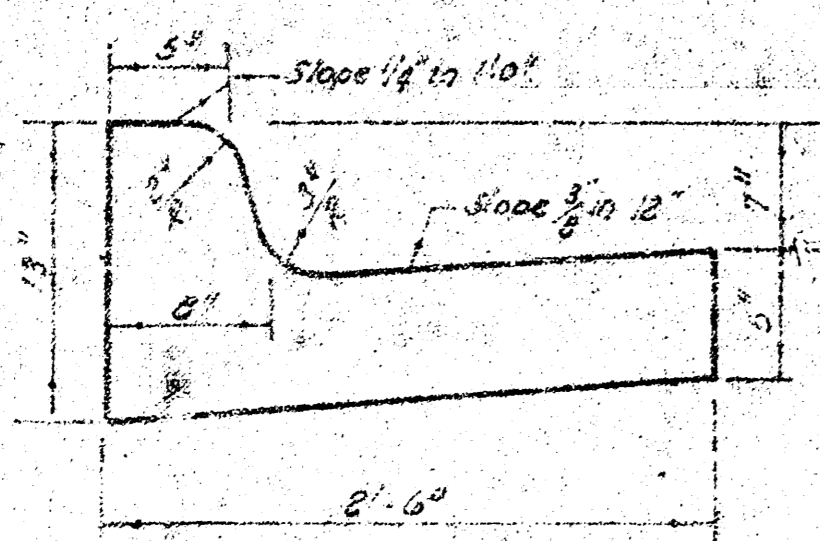
The A.C. pavement between the curb curb & gutter shall be paid as sq yds 9\"/>

TYPICAL SECTION

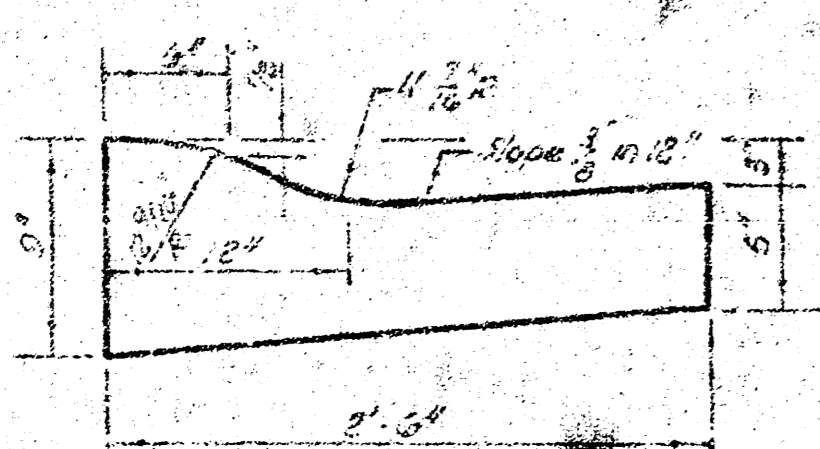
4\"/>

A TACK COAT OF EMULSIFIED ASPHALT (SS-1H) SHALL BE APPLIED AT AN APPROXIMATE RATE 0.05 GALLONS PER SQ YD BETWEEN LIFTS OF ASPHALTIC MATERIALS WHEN ORDERED BY THE ENGINEER. TACK COAT WILL NOT BE PAID FOR DIRECTLY AND SHALL BE CONSIDERED AS SUBSIDIARY TO PRICE BID FOR ASPHALTIC PAVEMENT. BITUMINOUS BASE AND ASPHALTIC CONCRETE WEARING SURFACE SHALL BE PLACED WITH A LAYDOWN MACHINE HAVING AUTOMATIC ELECTRONIC CONTROLS FOR CROWN AND GRADE. CONSTRUCTION JOINTS IN EACH LIFT SHALL BE STAGGERED A MINIMUM DISTANCE OF 1' WITH JOINTS IN PRECEDING LIFTS AND SUCH THAT A JOINT WILL BE CONSTRUCTED ON THE PAVEMENT CENTERLINE IN THE TOP LIFT.

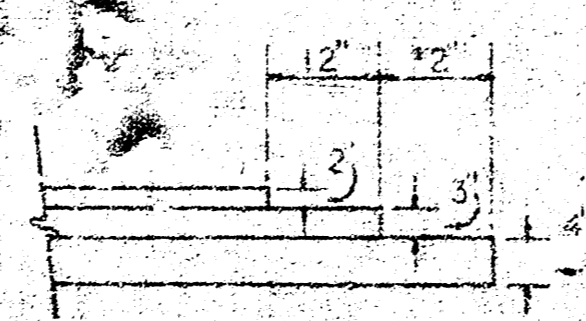
COMBINED CURB & GUTTER



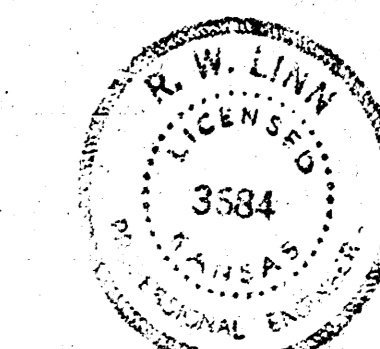
ROLL TYPE CURB & GUTTER



DETAIL OF TRANSVERSE CONSTRUCTION JOINTS



TRANSVERSE CONSTRUCTION JOINTS SHALL BE CONSTRUCTED IN FLEXIBLE BASE PAVEMENTS AT LOCATIONS WHERE PAVEMENT TEMPORARILY ENDS TO FACILITATE FUTURE PAVEMENT CONSTRUCTION AS SHOWN BY DETAIL. THE COST OF CONSTRUCTING THE TRANSVERSE CONSTRUCTION JOINTS SHALL NOT BE MEASURED OR PAID FOR DIRECTLY BUT SHALL BE INCLUDED IN THE BID PRICE FOR SQUARE YARDS OF ASPHALTIC CONCRETE PAVEMENT.



CITY OF WICHITA, KANSAS

DEPARTMENT of PUBLIC WORKS - Engineering Division

R. W. LINN CITY ENGINEER

DATE _____ Proj. No. DAKC574041/12

B.M. 158.97 N.E. Corner Conc. Porch at 9125 Thurman
 is \odot WOOD Dr.
 Scale: 1"=20'

STAKING DATA

Left Curb
 $\Delta = 40'27.47R - 635'6T - 2940' L - 446.47' LC - 472.21'$
 CURVE DATA BASED ON \odot RAD. $\Delta = 2071' 27''$

STA.	ARC.	CHORD LENGTH	DEFLECTION	TOTAL DEFLECTION
17432.27	0.00	0.00	0.00	0.00
17432.27	1.00	1.00	0.00	0.00
17432.27	2.00	2.00	0.00	0.00
17432.27	3.00	3.00	0.00	0.00
17432.27	4.00	4.00	0.00	0.00
17432.27	5.00	5.00	0.00	0.00
17432.27	6.00	6.00	0.00	0.00
17432.27	7.00	7.00	0.00	0.00
17432.27	8.00	8.00	0.00	0.00
17432.27	9.00	9.00	0.00	0.00
17432.27	10.00	10.00	0.00	0.00
17432.27	11.00	11.00	0.00	0.00
17432.27	12.00	12.00	0.00	0.00
17432.27	13.00	13.00	0.00	0.00
17432.27	14.00	14.00	0.00	0.00
17432.27	15.00	15.00	0.00	0.00
17432.27	16.00	16.00	0.00	0.00
17432.27	17.00	17.00	0.00	0.00
17432.27	18.00	18.00	0.00	0.00
17432.27	19.00	19.00	0.00	0.00
17432.27	20.00	20.00	0.00	0.00
17432.27	21.00	21.00	0.00	0.00
17432.27	22.00	22.00	0.00	0.00
17432.27	23.00	23.00	0.00	0.00
17432.27	24.00	24.00	0.00	0.00
17432.27	25.00	25.00	0.00	0.00
17432.27	26.00	26.00	0.00	0.00
17432.27	27.00	27.00	0.00	0.00
17432.27	28.00	28.00	0.00	0.00
17432.27	29.00	29.00	0.00	0.00
17432.27	30.00	30.00	0.00	0.00
17432.27	31.00	31.00	0.00	0.00
17432.27	32.00	32.00	0.00	0.00
17432.27	33.00	33.00	0.00	0.00
17432.27	34.00	34.00	0.00	0.00
17432.27	35.00	35.00	0.00	0.00
17432.27	36.00	36.00	0.00	0.00
17432.27	37.00	37.00	0.00	0.00
17432.27	38.00	38.00	0.00	0.00
17432.27	39.00	39.00	0.00	0.00
17432.27	40.00	40.00	0.00	0.00
17432.27	41.00	41.00	0.00	0.00
17432.27	42.00	42.00	0.00	0.00
17432.27	43.00	43.00	0.00	0.00
17432.27	44.00	44.00	0.00	0.00
17432.27	45.00	45.00	0.00	0.00
17432.27	46.00	46.00	0.00	0.00
17432.27	47.00	47.00	0.00	0.00
17432.27	48.00	48.00	0.00	0.00
17432.27	49.00	49.00	0.00	0.00
17432.27	50.00	50.00	0.00	0.00
17432.27	51.00	51.00	0.00	0.00
17432.27	52.00	52.00	0.00	0.00
17432.27	53.00	53.00	0.00	0.00
17432.27	54.00	54.00	0.00	0.00
17432.27	55.00	55.00	0.00	0.00
17432.27	56.00	56.00	0.00	0.00
17432.27	57.00	57.00	0.00	0.00
17432.27	58.00	58.00	0.00	0.00
17432.27	59.00	59.00	0.00	0.00
17432.27	60.00	60.00	0.00	0.00
17432.27	61.00	61.00	0.00	0.00
17432.27	62.00	62.00	0.00	0.00
17432.27	63.00	63.00	0.00	0.00
17432.27	64.00	64.00	0.00	0.00
17432.27	65.00	65.00	0.00	0.00
17432.27	66.00	66.00	0.00	0.00
17432.27	67.00	67.00	0.00	0.00
17432.27	68.00	68.00	0.00	0.00
17432.27	69.00	69.00	0.00	0.00
17432.27	70.00	70.00	0.00	0.00
17432.27	71.00	71.00	0.00	0.00
17432.27	72.00	72.00	0.00	0.00
17432.27	73.00	73.00	0.00	0.00
17432.27	74.00	74.00	0.00	0.00
17432.27	75.00	75.00	0.00	0.00
17432.27	76.00	76.00	0.00	0.00
17432.27	77.00	77.00	0.00	0.00
17432.27	78.00	78.00	0.00	0.00
17432.27	79.00	79.00	0.00	0.00
17432.27	80.00	80.00	0.00	0.00
17432.27	81.00	81.00	0.00	0.00
17432.27	82.00	82.00	0.00	0.00
17432.27	83.00	83.00	0.00	0.00
17432.27	84.00	84.00	0.00	0.00
17432.27	85.00	85.00	0.00	0.00
17432.27	86.00	86.00	0.00	0.00
17432.27	87.00	87.00	0.00	0.00
17432.27	88.00	88.00	0.00	0.00
17432.27	89.00	89.00	0.00	0.00
17432.27	90.00	90.00	0.00	0.00
17432.27	91.00	91.00	0.00	0.00
17432.27	92.00	92.00	0.00	0.00
17432.27	93.00	93.00	0.00	0.00
17432.27	94.00	94.00	0.00	0.00
17432.27	95.00	95.00	0.00	0.00
17432.27	96.00	96.00	0.00	0.00
17432.27	97.00	97.00	0.00	0.00
17432.27	98.00	98.00	0.00	0.00
17432.27	99.00	99.00	0.00	0.00
17432.27	100.00	100.00	0.00	0.00

Right Curb
 $\Delta = 40'05.47R - 635'6T - 2940' L - 446.46' LC - 472.21'$
 CURVE DATA BASED ON \odot RAD. $\Delta = 2071' 27''$

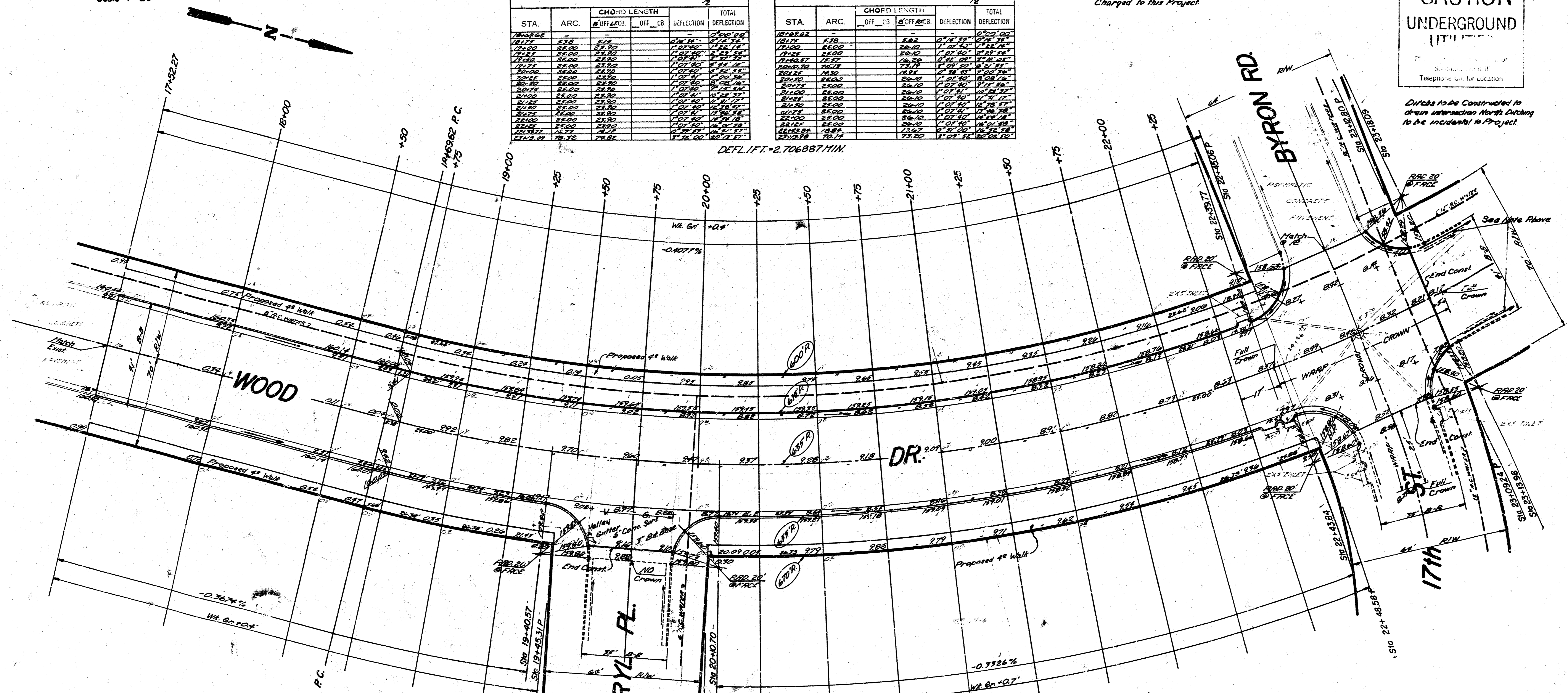
STA.	ARC.	CHORD LENGTH	DEFLECTION	TOTAL DEFLECTION
17432.27	0.00	0.00	0.00	0.00
17432.27	1.00	1.00	0.00	0.00
17432.27	2.00	2.00	0.00	0.00
17432.27	3.00	3.00	0.00	0.00
17432.27	4.00	4.00	0.00	0.00
17432.27	5.00	5.00	0.00	0.00
17432.27	6.00	6.00	0.00	0.00
17432.27	7.00	7.00	0.00	0.00
17432.27	8.00	8.00	0.00	0.00
17432.27	9.00	9.00	0.00	0.00
17432.27	10.00	10.00	0.00	0.00
17432.27	11.00	11.00	0.00	0.00
17432.27	12.00	12.00	0.00	0.00
17432.27	13.00	13.00	0.00	0.00
17432.27	14.00	14.00	0.00	0.00
17432.27	15.00	15.00	0.00	0.00
17432.27	16.00	16.00	0.00	0.00
17432.27	17.00	17.00	0.00	0.00
17432.27	18.00	18.00	0.00	0.00
17432.27	19.00	19.00	0.00	0.00
17432.27	20.00	20.00	0.00	0.00
17432.27	21.00	21.00	0.00	0.00
17432.27	22.00	22.00	0.00	0.00
17432.27	23.00	23.00	0.00	0.00
17432.27	24.00	24.00	0.00	0.00
17432.27	25.00	25.00	0.00	0.00
17432.27	26.00	26.00	0.00	0.00
17432.27	27.00	27.00	0.00	0.00
17432.27	28.00	28.00	0.00	0.00
17432.27	29.00	29.00	0.00	0.00
17432.27	30.00	30.00	0.00	0.00
17432.27	31.00	31.00	0.00	0.00
17432.27	32.00	32.00	0.00	0.00
17432.27	33.00	33.00	0.00	0.00
17432.27	34.00	34.00	0.00	0.00
17432.27	35.00	35.00	0.00	0.00
17432.27	36.00	36.00	0.00	0.00
17432.27	37.00	37.00	0.00	0.00
17432.27	38.00	38.00	0.00	0.00
17432.27	39.00	39.00	0.00	0.00
17432.27	40.00	40.00	0.00	0.00
17432.27	41.00	41.00	0.00	0.00
17432.27	42.00	42.00	0.00	0.00
17432.27	43.00	43.00	0.00	0.00
17432.27	44.00	44.00	0.00	0.00
17432.27	45.00	45.00	0.00	0.00
17432.27	46.00	46.00	0.00	0.00
17432.27	47.00	47.00	0.00	0.00
17432.27	48.00	48.00	0.00	0.00
17432.27	49.00	49.00	0.00	0.00
17432.27	50.00	50.00	0.00	0.00
17432.27	51.00	51.00	0.00	0.00
17432.27	52.00	52.00	0.00	0.00
17432.27	53.00	53.00	0.00	0.00
17432.27	54.00	54.00	0.00	0.00
17432.27	55.00	55.00	0.00	0.00
17432.27	56.00	56.00	0.00	0.00
17432.27	57.00	57.00	0.00	0.00
17432.27	58.00	58.00	0.00	0.00
17432.27	59.00	59.00	0.00	0.00
17432.27	60.00	60.00	0.00	0.00
17432.27	61.00	61.00	0.00	0.00
17432.27	62.00	62.00	0.00	0.00
17432.27	63.00	63.00	0.00	0.00
17432.27	64.00	64.00	0.00	0.00
17432.27	65.00	65.00	0.00	0.00
17432.27	66.00	66.00	0.00	0.00
17432.27	67.00	67.00	0.00	0.00
17432.27	68.00	68.00	0.00	0.00
17432.27	69.00	69.00	0.00	0.00
17432.27	70.00	70.00	0.00	0.00
17432.27	71.00	71.00	0.00	0.00
17432.27	72.00	72.00	0.00	0.00
17432.27	73.00	73.00	0.00	0.00
17432.27	74.00	74.00	0.00	0.00
17432.27	75.00	75.00	0.00	0.00
17432.27	76.00	76.00	0.00	0.00
17432.27	77.00	77.00	0.00	0.00
17432.27	78.00	78.00	0.00	0.00
17432.27	79.00	79.00	0.00	0.00
17432.27	80.00	80.00	0.00	0.00
17432.27	81.00	81.00	0.00	0.00
17432.27	82.00	82.00	0.00	0.00
17432.27	83.00	83.00	0.00	0.00
17432.27	84.00	84.00	0.00	0.00
17432.27	85.00	85.00	0.00	0.00
17432.27	86.00	86.00	0.00	0.00
17432.27	87.00	87.00	0.00	0.00
17432.27	88.00	88.00	0.00	0.00
17432.27	89.00	89.00	0.00	0.00
17432.27	90.00	90.00	0.00	0.00
17432.27	91.00	91.00	0.00	0.00
17432.27	92.00	92.00	0.00	0.00
17432.27	93.00	93.00	0.00	0.00
17432.27	94.00	94.00	0.00	0.00
17432.27	95.00	95.00	0.00	0.00
17432.27	96.00	96.00	0.00	0.00
17432.27	97.00	97.00	0.00	0.00
17432.27	98.00	98.00	0.00	0.00
17432.27	99.00	99.00	0.00	0.00
17432.27	100.00	100.00	0.00	0.00

DEFLECT. = 2.706887/1111

Only 6 Drives to be Charged to this Project

CAUTION
 UNDERGROUND UTILITIES
 See Note Above
 Ditches to be Constructed to drain intersection North Driveway to be incidental to Project.

Survey Checked by [Signature]
 Plan C.T.P.
 Exc. C.T.P.
 Checked



SUB-GRADE
 TYPE OF SUB-GRADE TREATMENT SHALL BE DETERMINED BY THE FIELD ENGINEER. SUB-GRADE TREATMENT MAY CONSIST OF LIME TREATMENT, CEMENT TREATMENT, SUB-GRADE MODIFICATION, OR ANY COMBINATION OF THESE.

NOTE TO FIELD ENGINEER & CONTRACTOR
 Grade parking and clear right-of-way for proposed sidewalks. Compact fill in sidewalk area. TO BE CONSTRUCTED BY