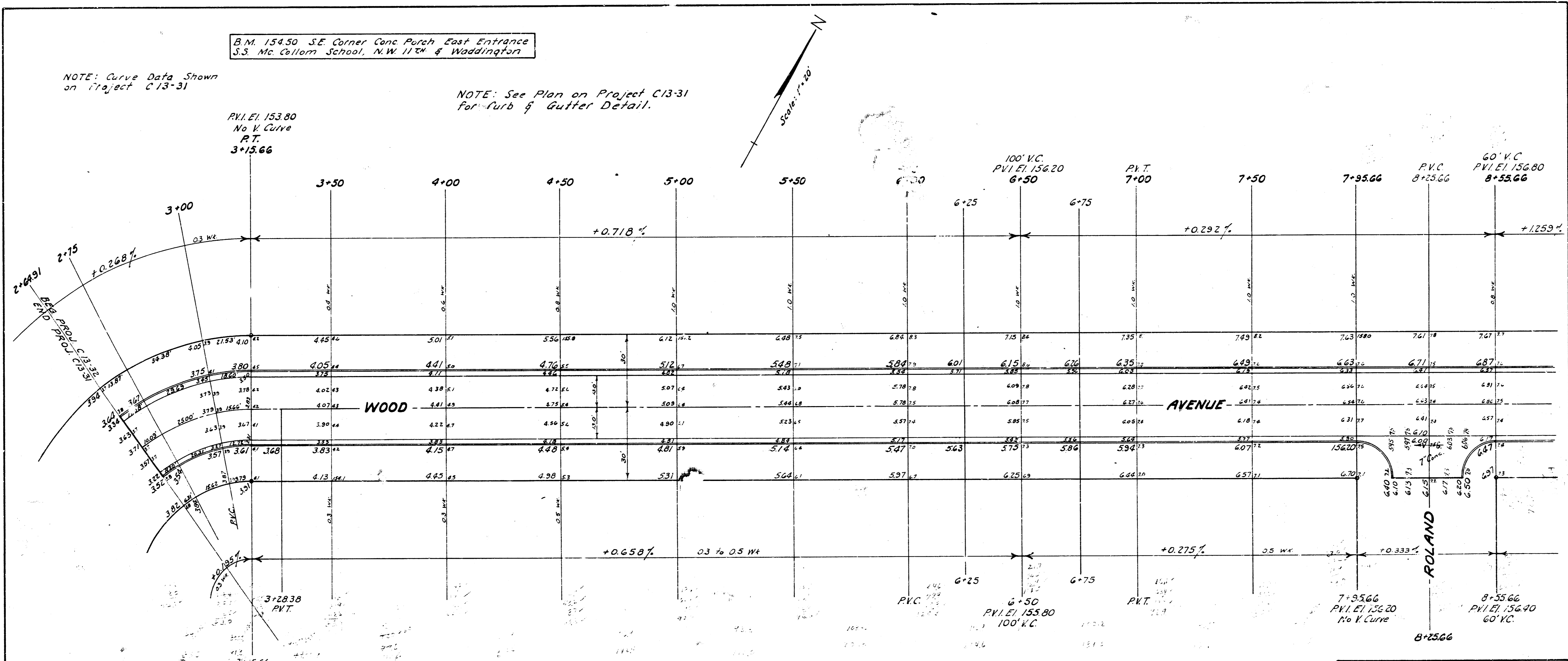
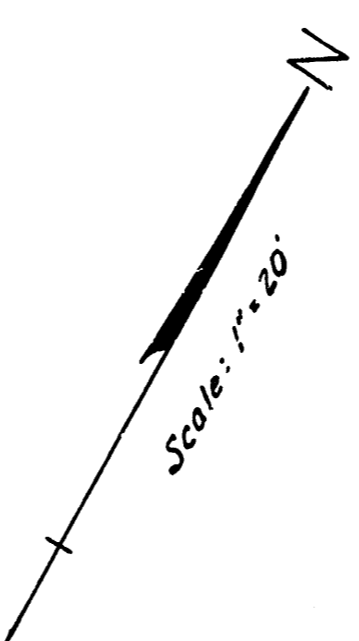


B.M. 154.50 SE Corner Conc. Paved East Entrance  
S.S. Mc Callum School, N.W. 11th & Waddington

NOTE: Curve Data Shown  
on Project C13-31

NOTE: See Plan on Project C13-31  
for curb & gutter Detail.



**EXCAVATION**

PROPERTY	CITY
2338 Cu.Yds.	102 Cu.Yds.
110 " 240 "	10 " "
<b>Total 2638 Cu.Yds.</b>	<b>112 Cu.Yds.</b>

**WOOD AVENUE**  
 FROM ALL LOT 27, BLOCK 9, WESTLINK  
 VILLAGE 5<sup>TH</sup> ADD<sup>N</sup>. TO E.L. LOT 4,  
 B. OCK 10, WESTLINK VILLAGE 5<sup>TH</sup> ADD<sup>N</sup>.  
**26-2-30 Asphalt Conc.**  
**B.E. SMITH CITY ENGINEER**  
**CITY OF WICHITA KANSAS**  
 OCT. 1963  
 Project No. C13-32

