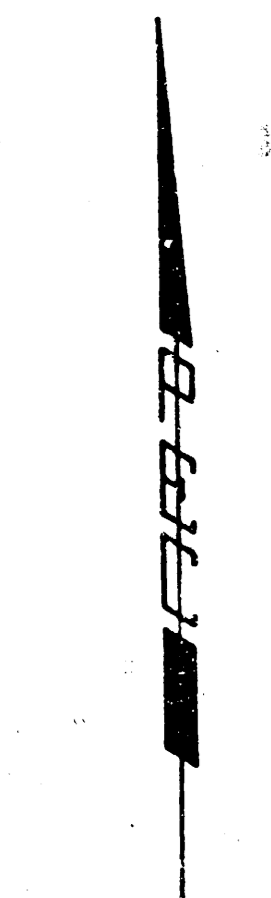


BARRINGTON PLACE

AN ADDITION TO WICHITA, SEDGWICK COUNTY, KANSAS

NE COR. NE 1/4
SEC. 9, T27S, R1W
OF THE 6TH P.M.

N. 1/4 COR.
SEC. 9, T27S, R1W
OF THE 6TH P.M.

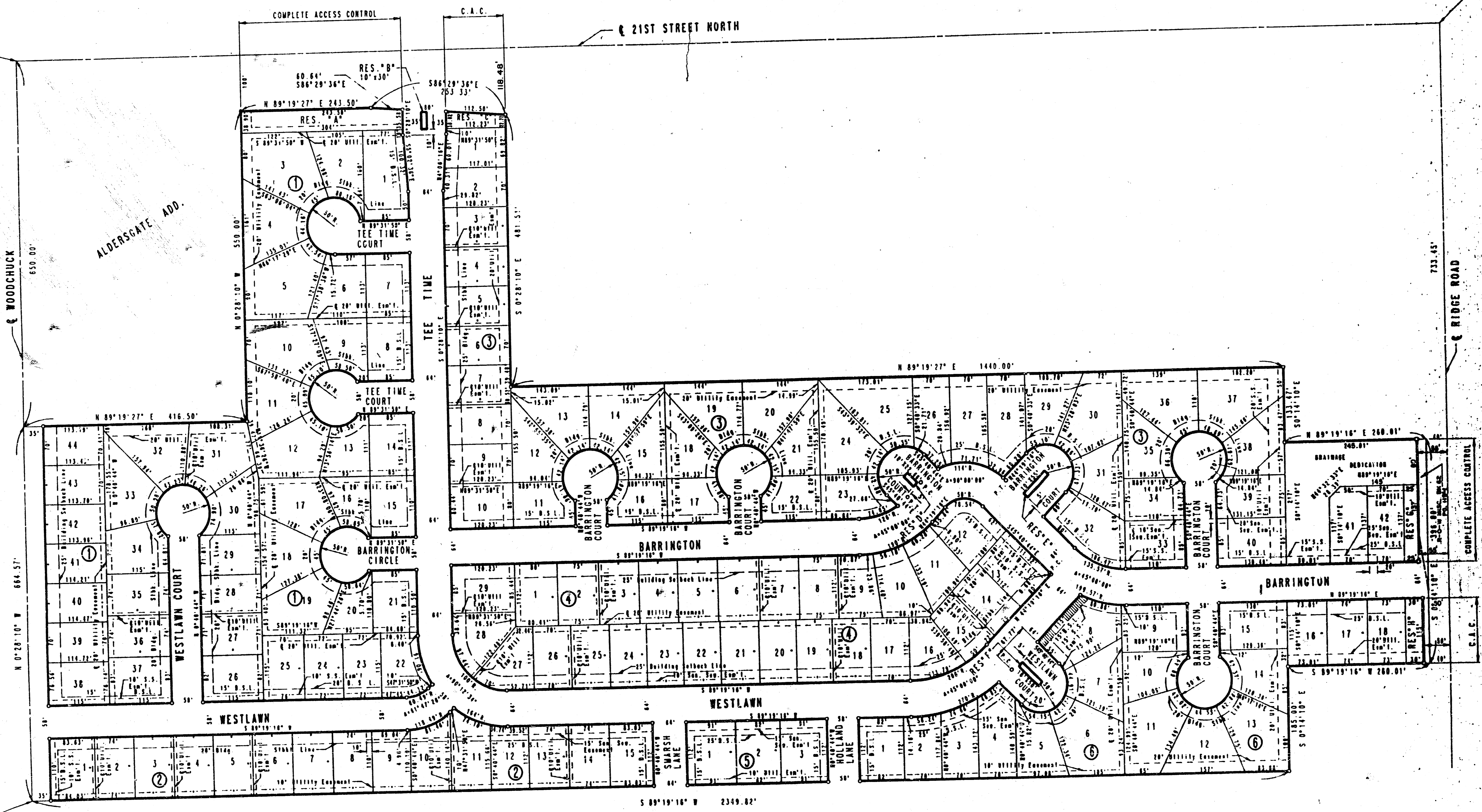


SCALE: 1" = 100'

• IRON SET
• B.S.L. = BUILDING SETBACK LINE
• C.A.C. = COMPLETE ACCESS CONTROL

B.M. = B.M. SPIKE IN SW SIDE POWER POLE 75' N.
AND 50' E. OF CENTERLINES OF RIDGE
ROAD AND 21 STREET NORTH
ELEV. = 1330.70 M.S.L.

POINT OF BEGINNING
SW COR. N. 1/2, NE 1/4
SEC. 9, T27S, R1W
OF THE 6TH P.M.



PLAT COPY

BAUGHMAN COMPANY, P.A.
SURVEYING & ENGINEERING
316-268-7271 • 315 ELLIS • WICHITA, KANSAS 67211

Design:	Drawn:	Approved:	Date:	Scale:

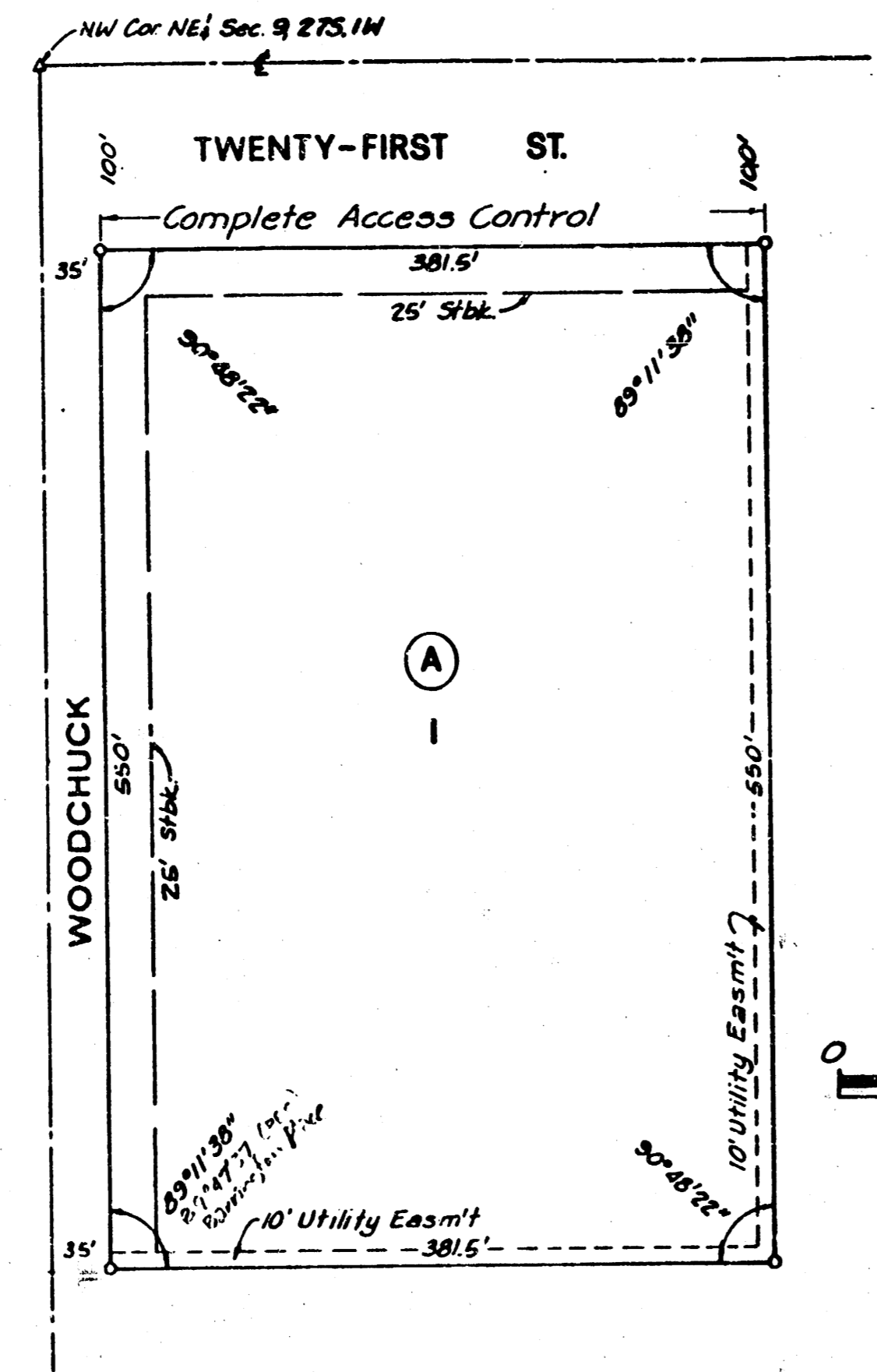
Project Number: 472-76-245-31776-000-000-001

Sheet 11 of 11

FILMED FROM THE BEST AVAILABLE COPY

B-1-2-22

A-136



ALDERSGATE

SEDGWICK COUNTY, KANSAS

State of Kansas) S.S. The foregoing instrument was acknowledged before me this 18 day of
 County of Sedgwick) June, 1979, by Melvin L. Short, Wichita District Superintendent, Kansas West Conference,
 United Methodist Church, and by Orville W. Thurman, Chairman, Board of Trustees, on behalf of the church.

My Appointment Expires: _____
 Betty L. Havercroft
 Betty L. Havercroft, Notary Public

This plat has been submitted to and approved by the Wichita-Sedgwick County Metropolitan Area Planning
 Commission, Wichita, Kansas, this 7th day of June, 1979.

Robert A. Lakin
 Robert A. Lakin, Secretary

Jeffrey Greider
 Jeffrey Greider, Chairman

This plat approved and all dedications shown hereon accepted by the Board of Commissioners of the City
 of Wichita, Kansas, this 1st day of AUG, 1979.

Donald C. Gisick, City Clerk

Tony Casado, Mayor

This plat approved and all dedications shown hereon accepted by the Board of County Commissioners of
 Sedgwick County, Kansas, this 28th day of August, 1979.

Tom Scott, Chairman

Everett Patrick, Commissioner

ATTEST:
Dorothy K. White
 Dorothy K. White, County Clerk

Donald E. Gragg
 Donald E. Gragg, Commissioner

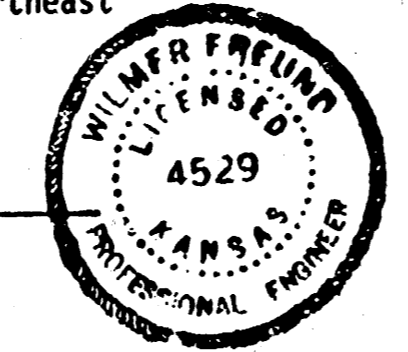
Entered on transfer record this 28 day of August, 1979.

Dorothy K. White
 Dorothy K. White, County Clerk

State of Kansas) S.S. I, Wilmer Freund, a Licensed Professional Engineer in the aforesaid County
 County of Sedgwick) and State, do hereby certify that I have surveyed and platted ALDERSGATE, Sedgwick County, Kansas, into
 a Block, Lot, and Street, and that the accompanying plat is a true and correct exhibit of the property
 surveyed, described as: The South 550 feet of the North 650 feet of the West 416.5 feet of the Northeast
 Quarter, Section 9, Township 27 South, Range 1 West of the 6th. P.M., Sedgwick County, Kansas

June 19, 1979

Wilmer Freund
 Wilmer Freund, P.E.



Know all men by these presents that we, the undersigned, owners of the land described in the Engineer's
 Certificate, have caused the same to be surveyed and platted into a Block, Lot and Street, the same to be
 known as ALDERSGATE, Sedgwick County, Kansas. Said Street is hereby dedicated to and for the use of the
 public. Easements as indicated are hereby granted for the construction and maintenance of public util-
 ities. All abutters rights of access to or from Twenty-First Street over or across the North line of
 Lot 1 are hereby granted to the appropriate governing body.

Bruce E. Marshall, Pastor

Norma L. Stafford, Trustee

Ronald E. Whitcomb, Trustee

ALDERSGATE UNITED METHODIST CHURCH

Melvin L. Short, Wichita Dist. Supt.

Orville W. Thurman, Chairman,
 Board of Trustees

Alvis L. DeForest, Trustee

Doris L. Hill, Trustee

State of Kansas) S.S. This is to certify that this instrument was filed for record in the Register
 County of Sedgwick) of Deeds Office, at _____ o'clock A.M., on the 21st day of August, 1979.

Pat Kettler, Deputy

Bette F. McCart, Register of Deeds

249-L-102

20.00

A-136

B-1-2-22

PLAT COPY

BAUGHMAN COMPANY, P.A.
 SURVEYING & ENGINEERING

316/282-7271 • 315 ELLIS • WICHITA, KANSAS 67211

Design: _____ Date: _____ Approved: _____ Date: _____ Scale: _____

Project Number: 472-76-245-B1776-000-000-001

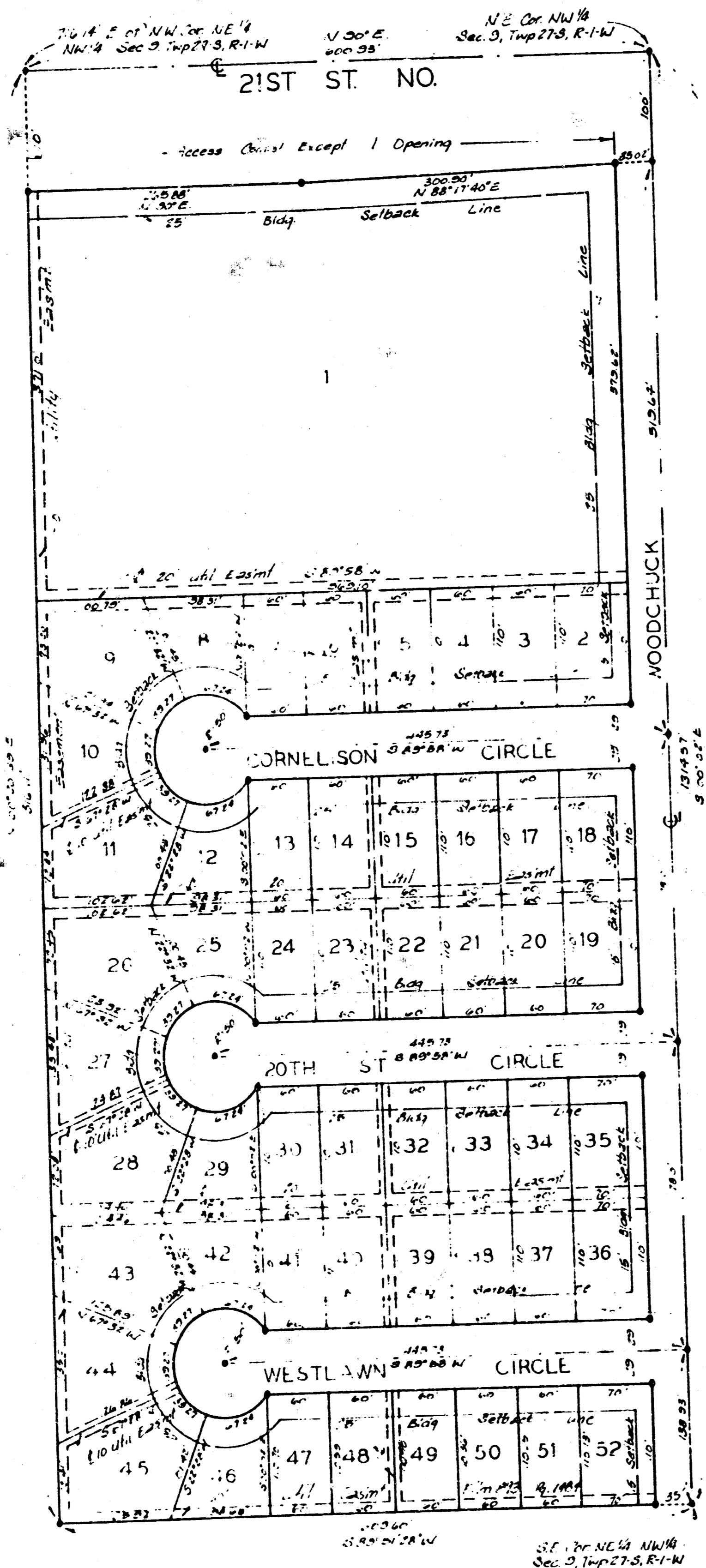
Sheet: 10 of 11

FILMED FROM THE BEST
 AVAILABLE COPY

D 5-29

WESTWIND 2ND ADDITION

WICHITA, KANSAS



State of Kansas ss We, Baughman Company, P.A. Surveyors in aforesaid county and state do hereby certify that we have surveyed and platted "WESTWIND 2ND ADDITION" Wichita, Kansas, and that the accompanying plat is a true and correct exhibit of the property surveyed, described as the NE 1/4 of the NW 1/4 of Sec. 3, Twp. 27-S, R-1-W of the 6th P.M., Sedgwick County, Kansas except that part described as beginning at the N.W. Corner of the NE 1/4, NW 1/4 of said Sec. 3; thence bearing N 90°00'00"E along the North line of said NW 1/4 a distance of 716.14 feet; thence bearing S 00°20'30"W a distance of 1314.11 feet to a point on the South line of the NE 1/4 of said NW 1/4; thence bearing S 89°51'28"W a distance 724.80 feet to the S.W. Corner of the NE 1/4 of said NW 1/4; thence bearing N 00°43'13"E a distance of 1318.00 feet to the point of beginning.

"Dec 1981" Date
Baughman Company, P.A.
Mark A. Sevey Surveyor

Know all men by these presents that we, the undersigned, have caused the land described in the surveyors certificate to be platted into lots and streets to be known as "WESTWIND 2ND ADDITION" Wichita, Kansas. The utility easements are hereby granted as indicated for the construction and maintenance of all public utilities. The streets are hereby dedicated to and for the use of the public. All egress rights of access to or from 21st St No over and across the north line of lot 1 are hereby granted to the City of Wichita, provided however that lot shall have access to 21st St No at one point as shall be determined by the City Engineer of Wichita, Kansas.

Alla Vista Development Company, a Kansas General Partnership
General Partner

State of Kansas ss The foregoing instrument acknowledged before me this 21st day of December 1981 by Leonard E. Marotte, General Partner of Alla Vista Development Company, a Kansas General Partnership, on behalf of the partnership.

My Apt. Exp. _____
Notary Public
Sandra E. Patter

This plat of "WESTWIND 2ND ADDITION" Wichita, Kansas, has been submitted to and approved by the Wichita-Sedgwick County Metropolitan Area Planning Commission, Wichita, Kansas. Dated this 11th day of December 1981
Wichita-Sedgwick County Metropolitan Area Planning Commission

Chairman
Secretary

This plat approved and all dedications shown hereon accepted by the Board of Commissioners of the City of Wichita, Kansas, this _____ day of _____ 1981.

Mayor
Deputy Mayor

Entered on transfer records _____ day of _____ 1981

City Clerk

State of Kansas ss This is to certify that this plat has been filed for record in the office of the Register of Deeds this 23rd day of February 1982 at 8:00 o'clock A.M. and is duly recorded.

Ed Rena, County Register

we, the undersigned, do hereby acknowledge the mortgage on the above described property, and consent to the plat of "WESTWIND 2ND ADDITION" Wichita, Kansas.

Federal Deposit Insurance Corporation as receiver for Boulevard State Bank
Lynn T. Leffert

State of Kansas ss The foregoing instrument acknowledged before me this 21st day of December 1981 by Lynn T. Leffert, Receiver of Federal Deposit Insurance Corporation, on behalf of the corporation.

My Apt. Exp. _____
Notary Public
Sandra E. Patter

PLAT COPY

BAUGHMAN COMPANY, P.A.
SURVEYING & ENGINEERING
316202-7271 • 315 ELLIS • WICHITA, KANSAS 67211

Project Number: 472-76-245-81776-000-000-001

D 5-29

FILMED FROM THE BEST AVAILABLE COPY

EA35

165

160

50

60

70

80

90

100

110

120

130

140

150

160

170

180

190

200

210

220

230

240

250

260

270

280

290

300

310

320

330

340

350

360

370

380

390

400

410

420

430

440

450

460

470

480

490

500

510

520

530

540

550

560

570

580

590

600

165

160

155

150

145

140

135

130

125

120

115

110

105

100

95

90

85

80

75

70

65

60

55

50

45

40

35

30

25

20

15

10

5

0

165

160

155

150

145

140

135

130

125

120

115

110

105

100

95

90

85

80

75

70

65

60

165

160

155

150

145

140

135

130

125

120

115

110

105

100

95

90

85

80

75

70

65

60

55

50

45

40

35

30

25

20

15

10

5

0

165

160

155

150

145

140

135

130

125

120

115

110

105

100

95

90

85

80

75

70

65

60

165

160

155

150

145

140

135

130

125

120

115

110

105

100

95

90

85

80

75

70

65

60

55

50

45

40

35

30

25

20

15

10

5

0

165

160

155

150

145

140

135

130

125

120

115

110

105

100

95

90

85

80

75

70

65

60

165

160

155

150

145

140

135

130

125

120

115

110

105

100

95

90

85

80

75

70

65

60

55

50

45

40

35

30

25

20

15

10

5

0

165

160

155

150

145

140

135

130

125

120

115

110

105

100

95

90

85

80

75

70

65

60

165

160

155

150

145

140

135

130

125

120

115

110

105

100

95

90

85

80

75

70

65

60

55

50

45

40

35

30

25

20

15

10

5

0

165

160

155

150

145

140

135

130

125

120

115

110

105

100

95

90

85

80

75

70

65

60

165

160

155

150

PA35

EXC 2270 CY
LF 0
CF 0
MF 0

C 1519

Sta. 9 + 00

160
155

EXC 130.2 CY
LF 0
CF 0
MF 0

C 1453

Sta. 8 + 76.42

160
155

EXC 274.0 CY
LF 0
CF 0
MF 0

C 2571

Sta. 8 + 37.42

160
155

EXC 287.9 CY
LF 0
CF 0
MF 0

C 1784

Sta. 7 + 98.42

160
155

EXC 554.7 CY
LF 0
CF 0
MF 0

C 1949

Sta. 7 + 50

160
155

EXC 345.8 CY
LF 0
CF 0
MF 0

C 2002

Sta. 7 + 00

160
155

EXC 321.1 CY
LF 0
CF 0
MF 0

C 2202

Sta. 6 + 50

160
155

EXC 420.0 CY
LF 0
CF 0
MF 0

C 2175

Sta. 5 + 98.42

160
155

EXC 515.6 CY
LF 0
CF 0
MF 0

C 2195

Sta. 5 + 57.42

160
155

EXC 278.1 CY
LF 0
CF 0
MF 0

C 1155

Sta. 5 + 20.42

160
155

EXC 310.4 CY
LF 0
CF 0
MF 0

Woodchuck

40
30
20
10
0
10
20
30
40

WOODCHUCK
#472-76-245-81777-000-000-001

BAUGHMAN COMPANY, P.A.
SURVEYING & ENGINEERING
3142-231 • 315 E111 • WORTH, KANSAS 67111

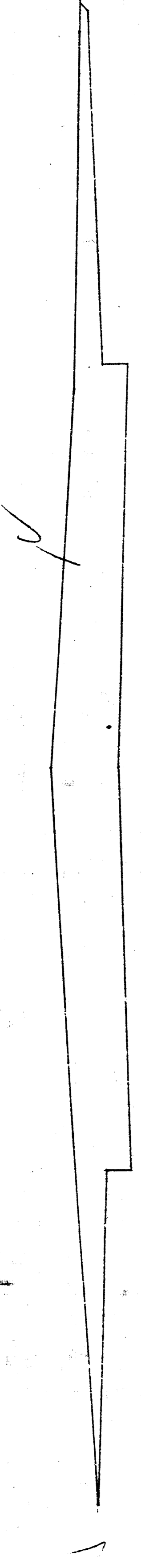
7
11

FILMED FROM THE BEST AVAILABLE COPY

BASS

20.42' \angle

EXC 118.1 CY
CF 0
LF 0
MF 0

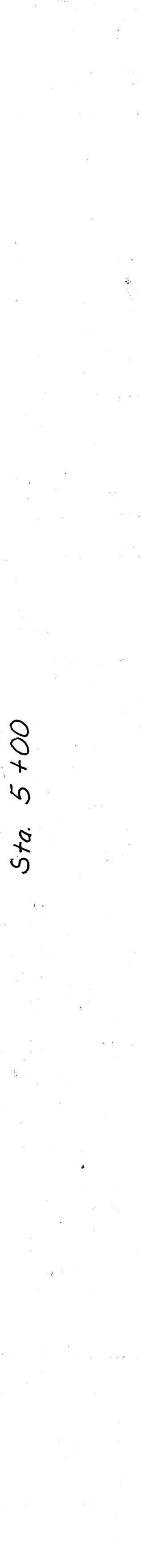


Sta. 5+00

160
155

50' \angle

EXC 111.3 CY
CF 0
LF 1.0 CY
MF 0

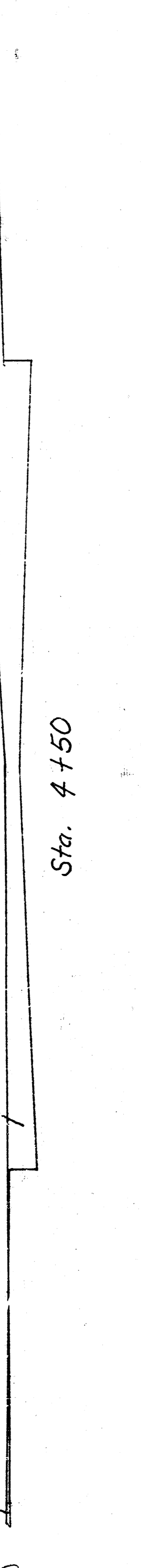


Sta. 4+50

160
155

50' \angle

EXC 104.7 CY
CF 0
LF 1.6 CY
MF 0

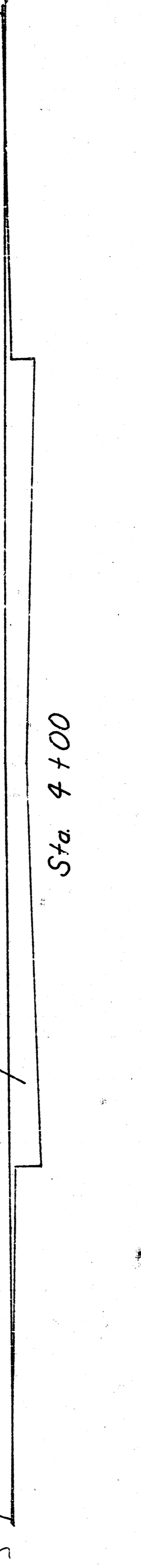


Sta. 4+00

160
155

50' \angle

EXC 121.9 CY
CF 0
LF 6.3 CY
MF 0

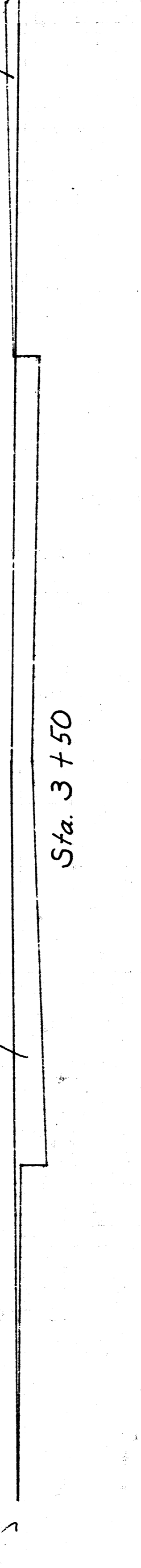


Sta. 3+50

160
155

20.58' \angle

EXC 55.6 CY
CF 0
LF 4.4 CY
MF 0

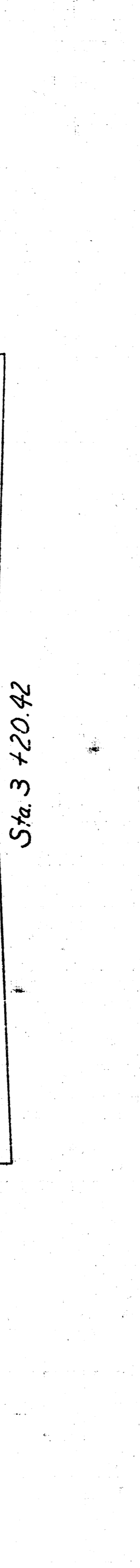


Sta. 3+20.42

160
155

39' \angle

EXC 86.7 CY
CF 0
LF 1.2 CY
MF 0

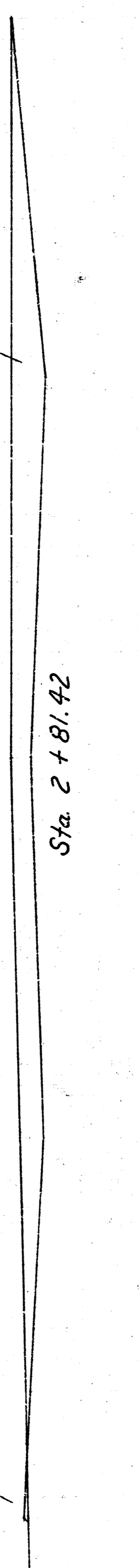


Sta. 2+81.42

160
155

35' \angle

EXC 68.0 CY
CF 0
LF 2.0 CY
MF 0

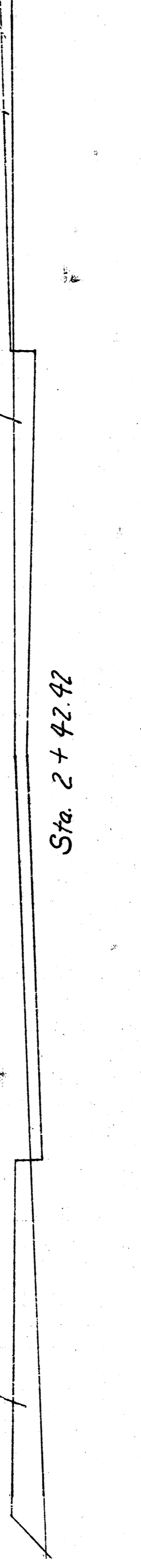


Sta. 2+42.42

160
155

42.42' \angle

EXC 43.1 CY
CF 0
LF 57.0 CY
MF 1.2 CY

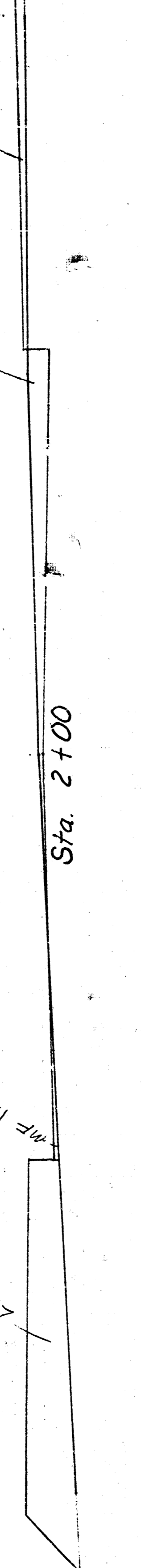


Sta. 2+00

160
155

50' \angle

EXC 31.1 CY
CF 0
LF 59.2 CY
MF 1.2 CY

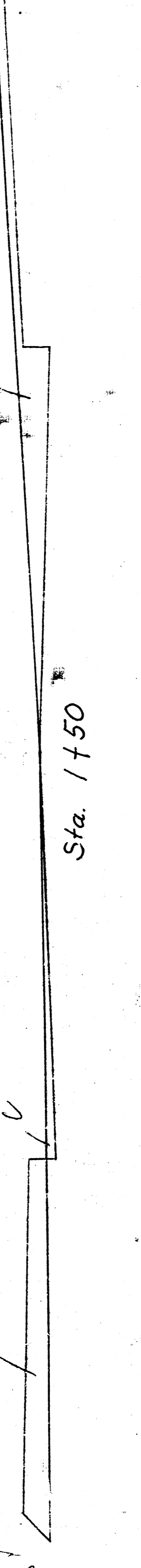


Sta. 1+50

160
155

75.1' \angle

EXC 12.0 CY
CF 0
LF 3.0 CY
MF 0



Sta. 1+42.49

160
155

PAGE TOTALS

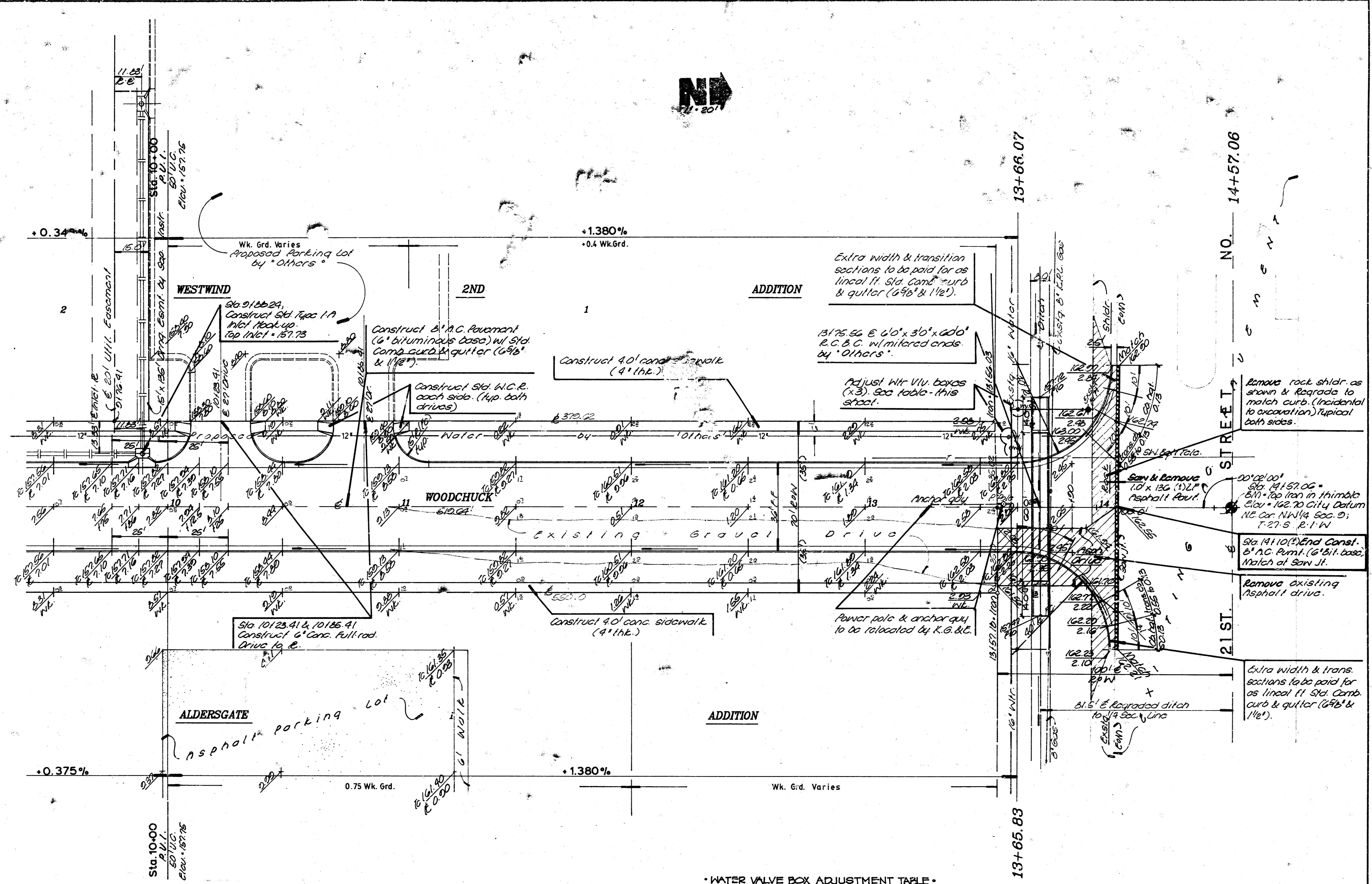
EXC 803.3 CY
MF 2.2 CY
LF 154.1 CY

40	30	20	10	0	10	20	30	40
				Woodchuck				

WOODCHUCK
472-76-245-81777-000-000-001

BAUGHMAN COMPANY, P.A.
SURVEYING & ENGINEERING
314262751 • 315 8114 • WOOD, LANSDALE

FILMED FROM THE BEST AVAILABLE COPY



- BENCHMARKS**
1. "D" Cut top cb. adjacent to NW Cor. Lot 29, Blk. 1; BARRINGTON PLACE ADDITION. Elev. = 155.91 City datum
 2. "C" Cut SW. Cor. of catch basin, E. End of NE Return of 19TH ST. at Woodchuck. Elev. = 155.11 City datum
 3. Top of Iron in Thimble NE Cor. NW 1/4, Sec. 9, T-27-S, R-1-W. (Intersection 21st St. at Woodchuck.) Elev. = 162.70 City datum

WATER VALVE BOX ADJUSTMENT TABLE

STATION	EXISTG. ELEV.	FIN. ELEV.
13+01, 20' LT.	162.10	162.7
13+02, 24' LT.	162.21	162.7
13+05, 40' LT.	161.71	160.6
2+56, 20' LT.	PROPOSED	155.6
3+04, 30' LT.	PROPOSED	155.6
5+62, 30' LT.	PROPOSED	156.5
6+60, 30' LT.	PROPOSED	157.5

WOODCHUCK
STATION 10+00 TO 14+00

BAUGHMAN COMPANY P. A.
SURVEYING & ENGINEERING
316/282-7271 • 315 ELLIS • WICHITA, KANSAS 67211

PROJECT NUMBER
472-76-245-81777-000-000-001

DESIGN: TCR DRAWN: Samy APPROVED: [Signature] DATE: Apr 08 SCALE: 1" = 20'

REV. SHEET 5 OF 11

FILMED FROM THE BEST AVAILABLE COPY

STREET IMPROVEMENTS

70

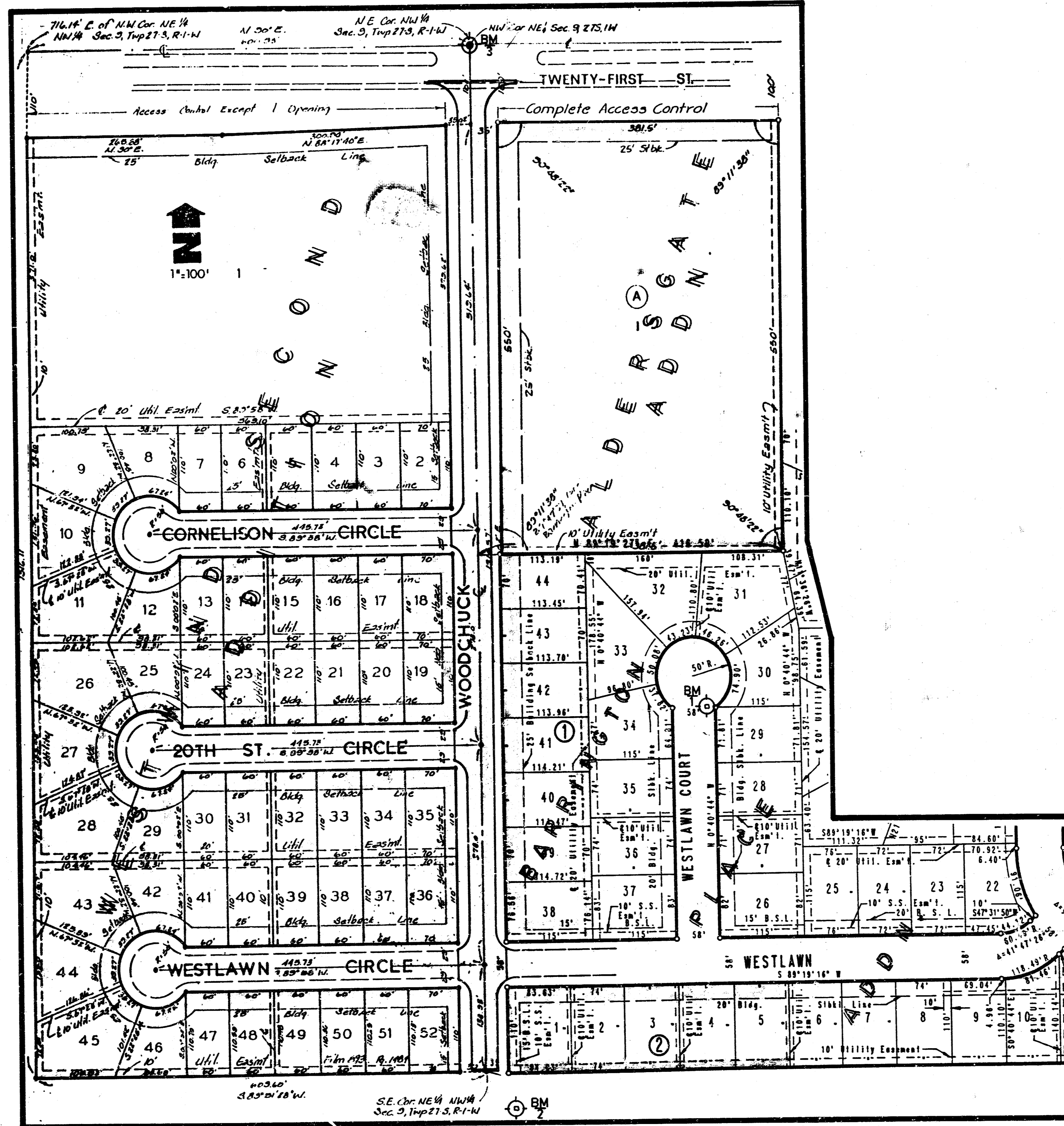
WOODCHUCK

S.L. LOT 52 WESTWIND SECOND ADDITION
TO S.L. 21ST. STREET NORTH
INDEX CODE 760082

PROJECT NO. 472-76-245-81777-000-000-001

GENERAL NOTES

- Utility service lines, poles, valve boxes, meters, and etcetera are to be adjusted as necessary by others prior to construction unless the plans specifically call for their adjustment by the Contractor or unless the plans specifically identify a utility to be adjusted by its owner during construction. Existing utilities and their location, as shown on the plans, represent the best information obtainable for design. The contractor will be required to work around existing utilities within the right-of-way which do not conflict with proposed construction.
- A saw cut of at least one-half the depth of existing surface courses or one-fourth the depth of the existing total pavement thickness shall be provided at locations where proposed construction abuts an existing surface course or pavement for which partial removal of that surface or pavement is required. Sawed joints to facilitate removal within three (3) feet of existing joints will not be permitted and for such instances the limits of removal shall extend to the existing joint. Such saw cuts will not be paid for directly and this cost shall be considered as subsidiary to the removal of the surface or pavement.
- Rubble from the removal of miscellaneous structures or excess excavation which is to be wasted shall be disposed of on sites to be provided by the Contractor. These sites shall be approved by the Engineer as to suitability, appearance and site location. Locations that, in the opinion of the Engineer, will leave an unsightly appearance will not be approved.
- No more than 6 drives 30 feet in width, or equivalent combinations thereof, are to be constructed with this project.
- Widened gutter section of combined curb and gutter at intersections will not be paid for directly, and this cost shall be considered as subsidiary to the other contract pay items of work.
- Limits of earthwork shall match existing ground elevations at the right-of-way line unless otherwise noted on the plans with a new finished grade elevation. When a new finished grade elevation is shown, the earthwork shall extend one foot beyond the right-of-way line and then sloped up or down using permissible slopes to match the existing ground surface.
- Contractor shall give property owners abutting this project, whose yards will be lower than the new finished grade elevations at the right-of-way line, an opportunity to utilize excess excavated material from the project to regrade their yards to drain to the new pavement. Contractor will be required to dump and spread the excess material as required by the specification when requested by the property owner. The Contractor shall ascertain that a dirt order form has been properly executed by the property owner before any such excess material is delivered to such properties.
- The Contractor will be permitted to bid only one of the alternate types of subgrade treatment. The type bid by the successful bidder will be the type of subgrade treatment used to construct the project.
- The Contractor shall be responsible for preserving property irons. The Contractor will be required to re-establish any property irons which are damaged or destroyed by his construction operations. Such irons shall be re-established by a licensed land surveyor in accordance with state laws.
- Driveway widths and locations shown on the plan are tentative. Contractor will be required to obtain properly executed driveway request form signed by property owner or his authorized representative verifying such driveway widths and locations. Such forms shall be submitted to the Engineer for his review and approval.
- The Contractor shall give all property owners and/or tenants of developed property abutting the project limits a minimum of ten (10) days advance notice prior to start of construction.
- All curb inlet hookups to be paid each, regardless of inlet size.



IMPROVEMENT DISTRICT

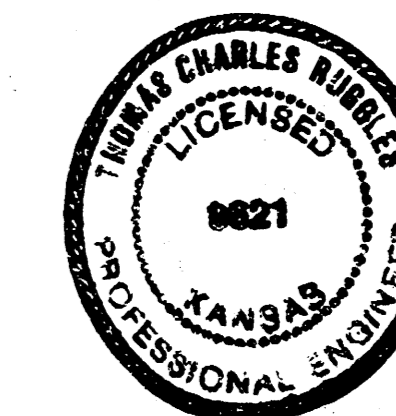
BENCHMARKS

- *of Cut top ch. adjacent to NW Cor. lot 29, Blk. 1, BARRINGTON PLACE ADDITION. Elev. = 155.91 City datum
- *of Cut SW. Cor. of catch basin, E. End of NE Return of 19TH ST. at Woodchuck. Elev. = 155.11 City datum
- Top of Iron in Thimble NE Cor. NW1/4, Sec. 9, T-27-S, R-1-W. (Intersection 21st St. at Woodchuck.) Elev. = 162.70 City datum

CITY OF WICHITA, KANSAS
MICHAEL E. LINDEBAK
CITY ENGINEER

INDEX of SHEETS

- TITLE SHEET
- TYPICAL PAVEMENT SECTION, PAVMNT. DETAILS
- PAVING PLAN SHEETS
- EARTHWORK CROSS-SECTIONS
- FINAL PLAT (COPY)



JULY 27, 1989

TITLE SHEET

DAUGHMAN COMPANY, P.A.
SURVEYING & ENGINEERING
316-282-7271 • 315 ELLIS • WICHITA, KANSAS 67211

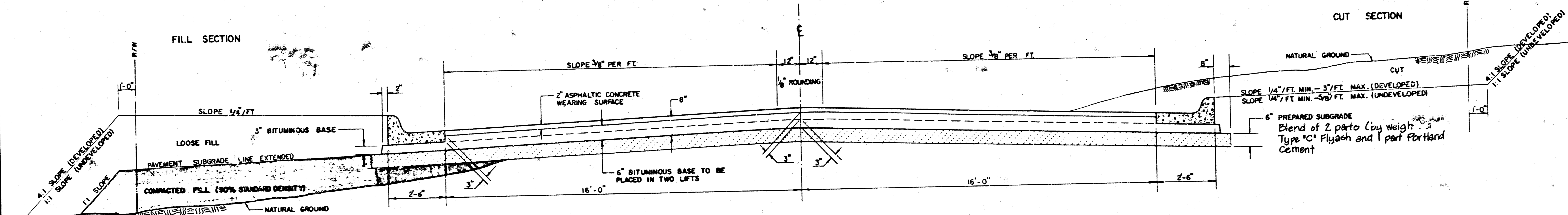
Drawn: T. Ruppel, Survey Checked: M. E. Lindebak Date: 7/27/89 Scale: as noted

Sheet: 1 of 11

FILMED FROM THE BEST AVAILABLE COPY....

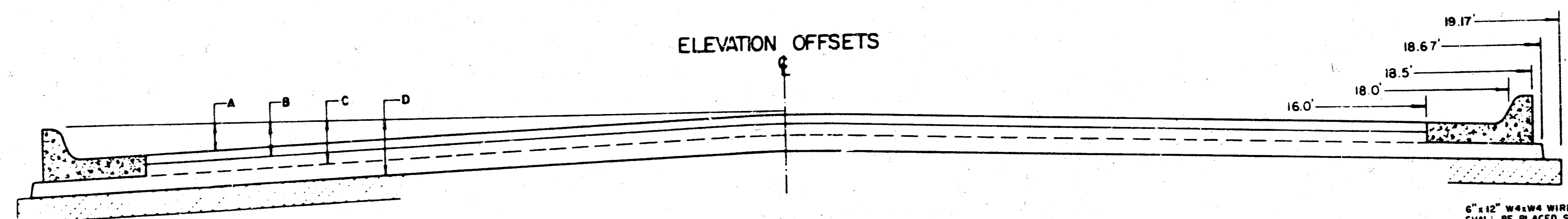
TYPICAL 37' PAVEMENT DETAILS

TRANSVERSE SECTION

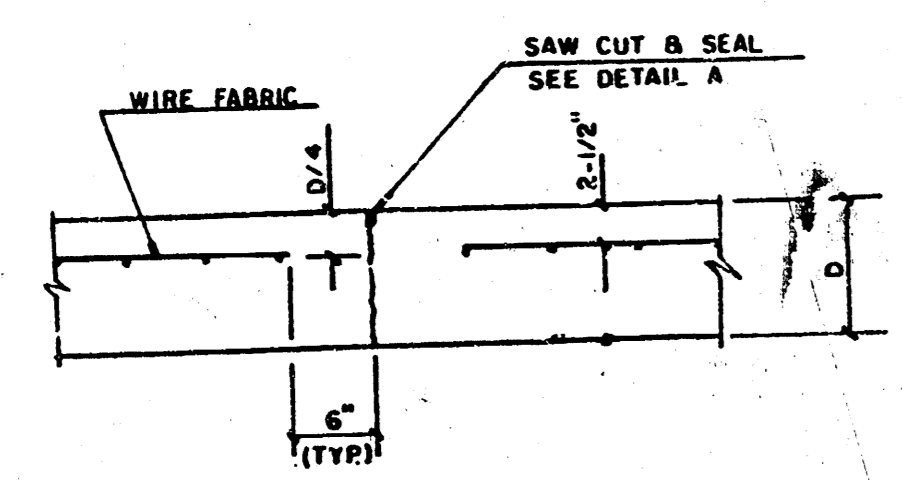


NOTE: ALL CONCRETE VALLEY GUTTER REINFORCEMENT SHALL BE ADEQUATELY SUPPORTED BY BAR CHAIRS IN THE REQUIRED POSITION UNLESS APPROVED OTHERWISE BY THE ENGINEER.

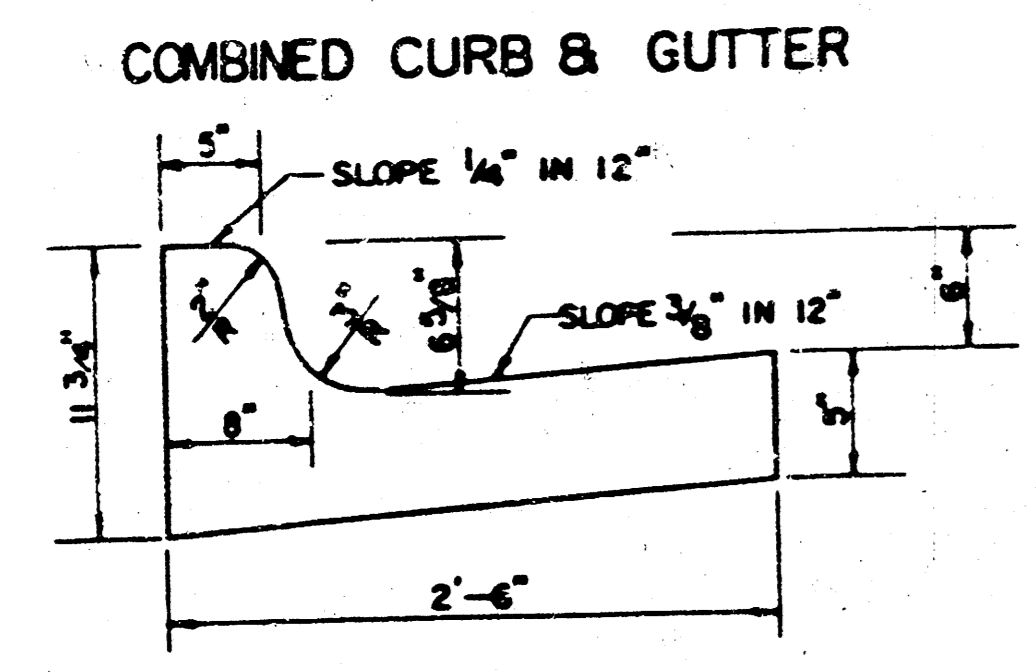
ELEVATION OFFSETS



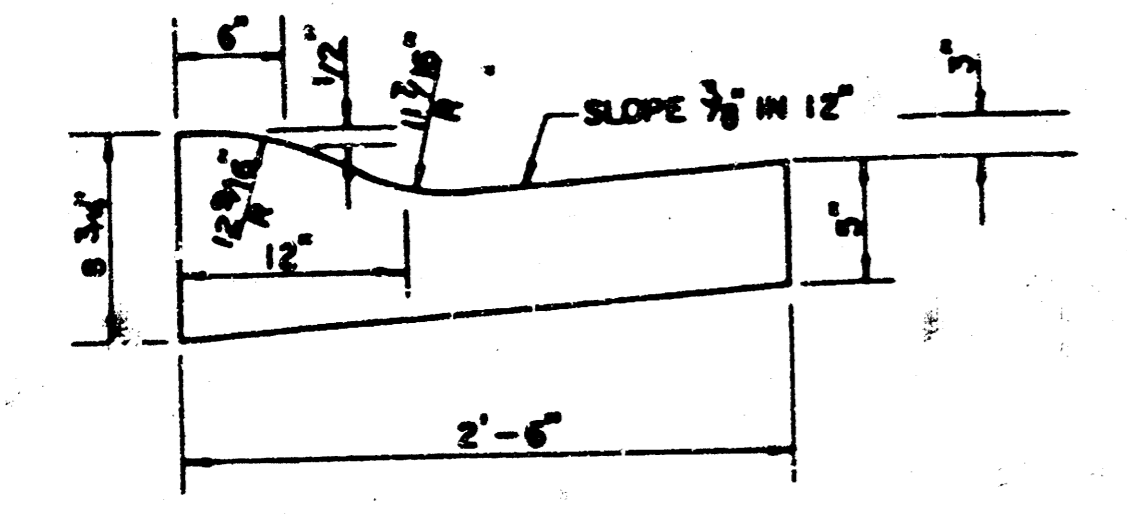
	0	2	4	6	8	10	12	14	16	18	18.5	18.67	19.17
A. TOP OF CURBS TO TOP OF SURFACE LIFT	.00	.05	.1	.18	.24	.30	.36	.43	.49	—	—	—	—
B. TOP OF CURBS TO TOP OF UPPER BASE LIFT	.17	.22	.28	.34	.40	.47	.53	.59	.65	—	—	—	—
C. TOP OF CURBS TO TOP OF LOWER BASE LIFT	.42	.47	.53	.59	.65	.72	.78	.84	.90	.97	.98	.99	—
D. TOP OF CURBS TO TOP OF SUBGRADE	.67	.72	.78	.84	.90	.97	1.03	1.09	1.15	1.22	1.23	1.24	1.25



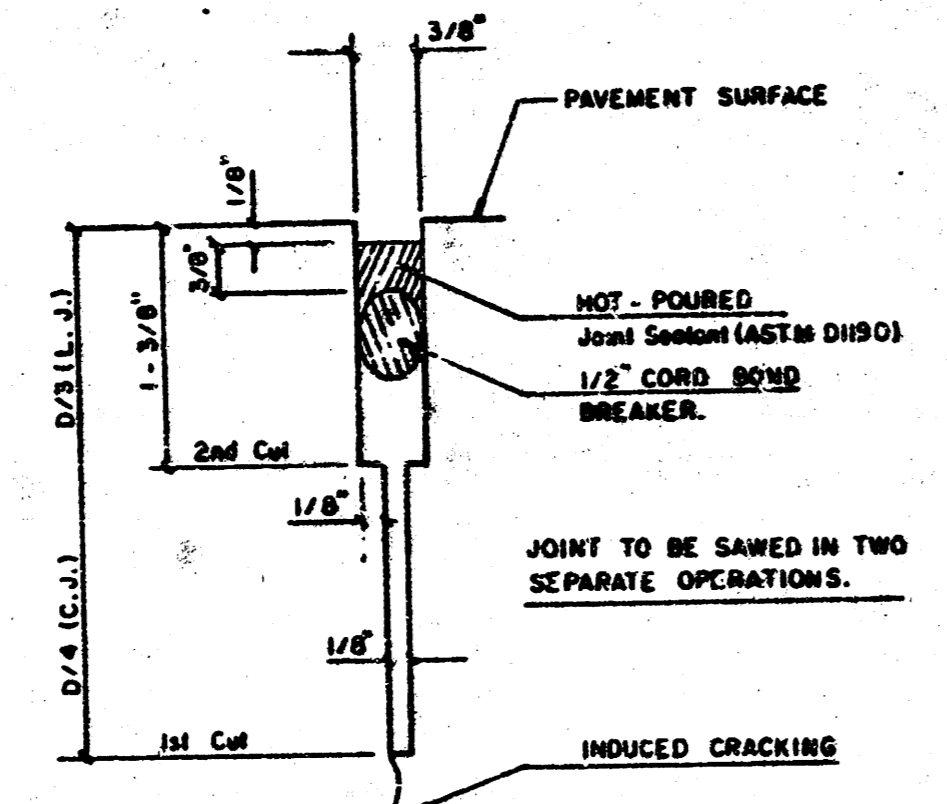
CONTRACTION JOINT DETAIL (C.J.)



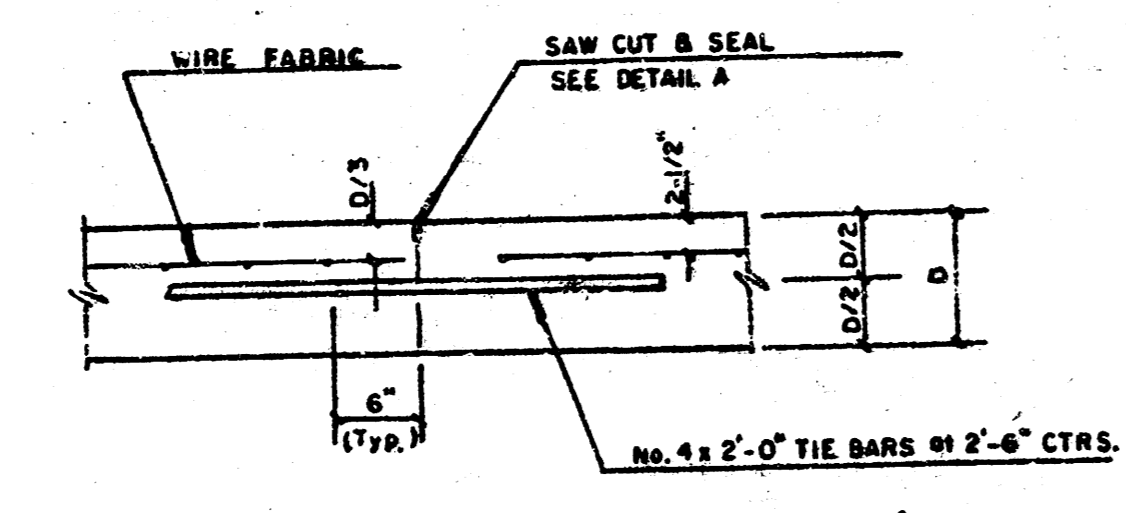
COMBINED CURB & GUTTER



ROLL TYPE COMBINED CURB & GUTTER



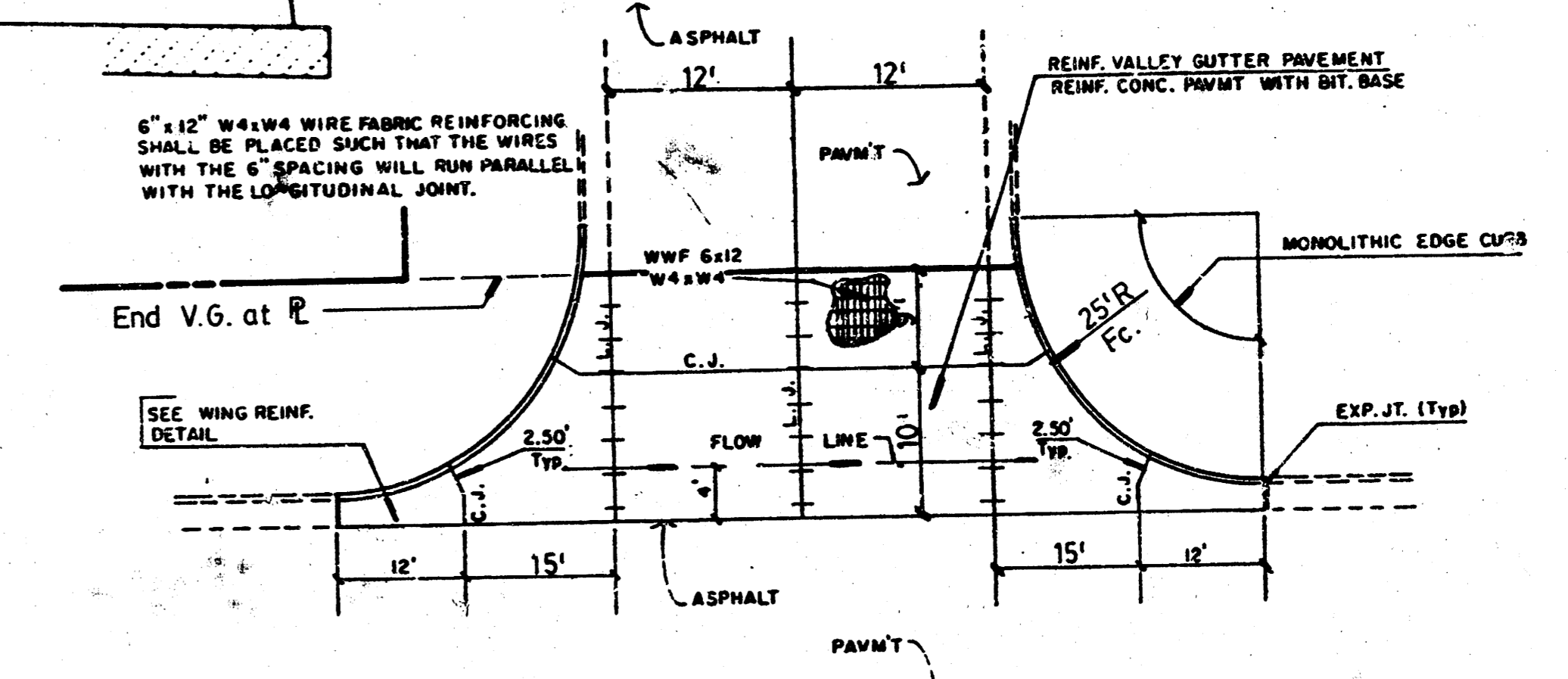
DETAIL A



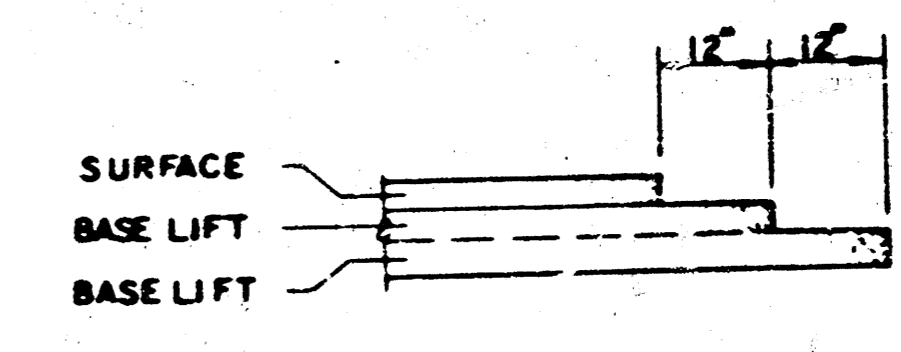
LONGITUDINAL JOINT DETAIL (L.J.)

GENERAL NOTES

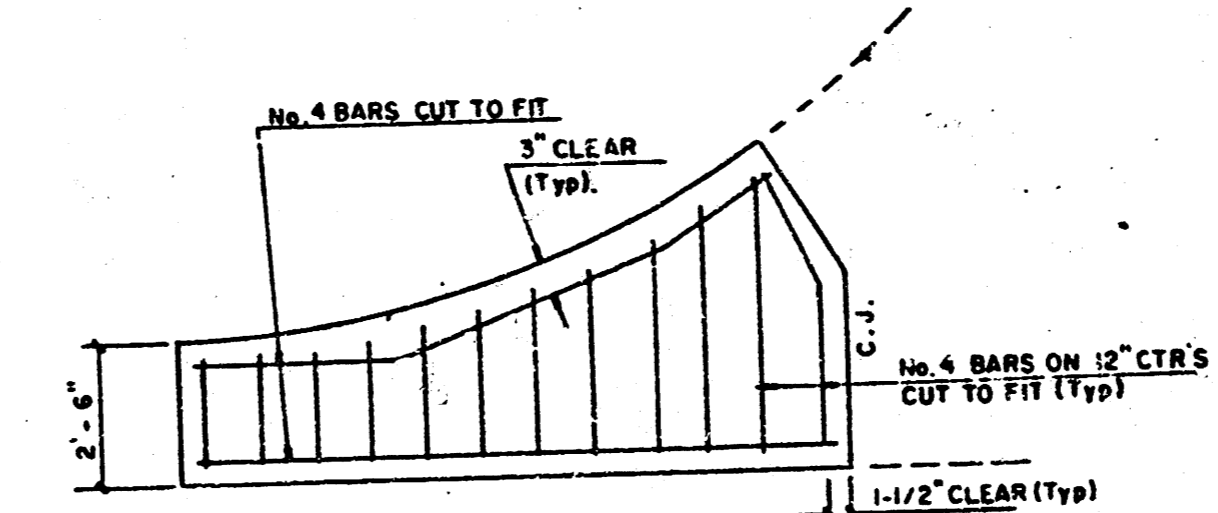
- 1) THE ASPHALTIC CONCRETE PAVEMENT BETWEEN THE COMBINED CURB AND GUTTER SHALL BE PAID AS SQUARE YARDS OF 8" ASPHALTIC CONCRETE (6" BITUMINOUS BASE).
- 2) THE BITUMINOUS BASE UNDER AND BEHIND THE COMBINED CURB AND GUTTER SHALL BE PAID AS SQUARE YARDS OF 3" BITUMINOUS BASE.
- 3) A TACK COAT OF EMULSIFIED ASPHALT (SC-1H OR CSS-1H) SHALL BE APPLIED AT AN APPROXIMATE RATE OF 0.05 GALLONS PER SQUARE YARD BETWEEN EACH LIFT OF ASPHALTIC MATERIAL.
- 4) BITUMINOUS BASE AND ASPHALTIC CONCRETE WEARING SURFACE SHALL BE PLACED WITH A LAYDOWN MACHINE HAVING AUTOMATIC CONTROLS FOR LINE AND GRADE.
- 5) CONSTRUCTION JOINTS IN EACH LIFT SHALL BE STAGGERED A MINIMUM DISTANCE OF ONE (1) FOOT FROM JOINTS IN PRECEDING LIFTS AND PLACED SO THAT A JOINT WILL BE CONSTRUCTED ON THE CENTERLINE OF THE TOP LIFT.
- 6) CONTRACTOR TO BID ONLY ONE SUBGRADE TREATMENT ALTERNATE WHEN ALTERNATES ARE PROVIDED IN THE PROPOSAL AND CONTRACT. THE ALTERNATE CHOSEN BY THE SUCCESSFUL BIDDER SHALL BE USED IN CONSTRUCTING THIS PROJECT.



PLAN REINFORCED VALLEY GUTTER TRANSVERSE CONSTRUCTION JOINTS



TRANSVERSE CONSTRUCTION JOINTS SHALL BE CONSTRUCTED IN FLEXIBLE BASE PAVEMENTS AT LOCATIONS WHERE PAVEMENT JOINTS EXISTING FLEXIBLE BASE PAVEMENT AS SHOWN BY THE DETAIL. ALL COSTS ASSOCIATED WITH THE CONSTRUCTION OF THE TRANSVERSE JOINT SHALL BE INCLUDED IN THE BID PRICE FOR SQUARE YARDS 8" ASPHALTIC CONCRETE (6" BITUMINOUS BASE).



WING REINFORCING DETAIL

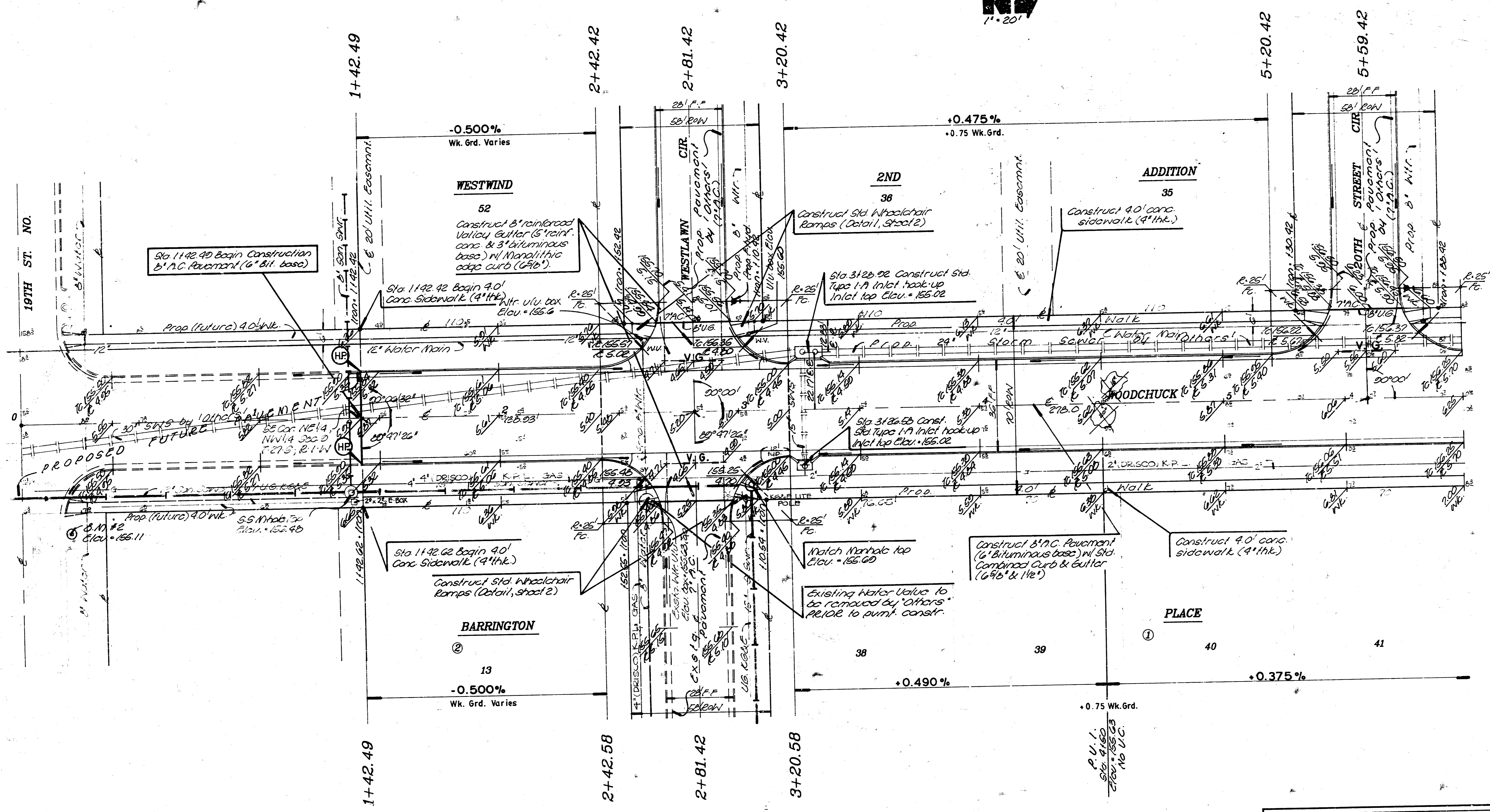
8" RESIDENTIAL ASPHALTIC CONCRETE PAVEMENT w/ 6" BITUMINOUS BASE

BAUGHMAN COMPANY, P.A.
SURVEYING & ENGINEERING
315 ELLIS • WICHITA, KANSAS 67211

Scale: C of W Date: none

Project Number: 472-76-245-81777-000-000-001

FILMED FROM THE BEST AVAILABLE COPY



- BENCHMARKS**
1. "d" Cut top cb. adjacent to NW Cor. Lot 29, Blk. 1, BARRINGTON PLACE ADDITION. Elev. = 155.91 City datum
 2. "d" Cut SW Cor. of catch basin, E End of NE Return of 19TH ST. at Woodchuck. Elev. = 155.11 City datum
 3. Top of Iron in Thimble NE Cor. NW 1/4, Sec. 9, T-27-S, R-1-W. (Intersection 21st ST. at Woodchuck.) Elev. = 162.70 City datum

EARTHWORK QUANTITIES

Excavation	5630 Cu. yd.
Compacted Fill	6 Cu. yd.
Subgrade Manip.	6353 Cu. yd.

WOODCHUCK
STATION 1+42.49 TO 5+00

BAUGHMAN COMPANY P. A.
SURVEYING & ENGINEERING
318/262-7271 • 315 ELLIS • WICHITA, KANSAS 67211

PROJECT NUMBER
472-76-245-81777-000-000-001

DESIGN TCR	DRAWN BMM	APPROVED	DATE Apr. 60	SCALE 1" = 20'	REV. 3
---------------	--------------	----------	-----------------	-------------------	-----------

SHEET 3 OF 11

FILMED FROM THE BEST AVAILABLE COPY