

Street Improvements for

# WOODLAND AT THE PARK ADDITION

**MAXWELL:** From the E.L. Yellowstone to the S.E. Corner Lot 5, Block B  
**SAVANNAH:** From the E.L. Yellowstone to the S.E. Corner Lot 5, Block B

Project No.

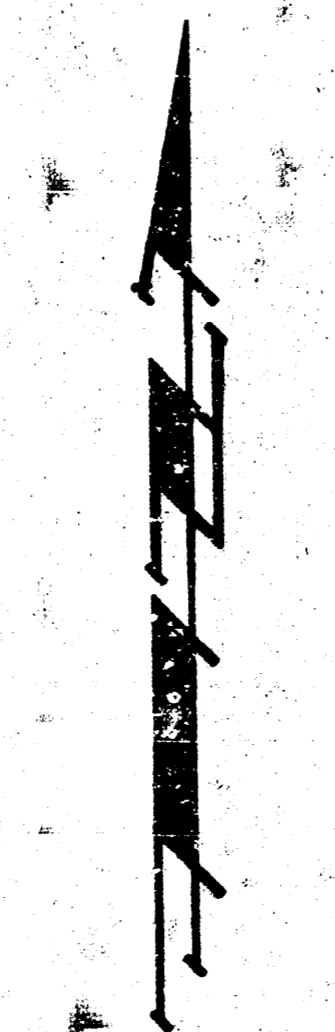
## 472-76-245-81820-000-000-001

City of Wichita, Kansas - Michael E. Lindebak, City Engineer

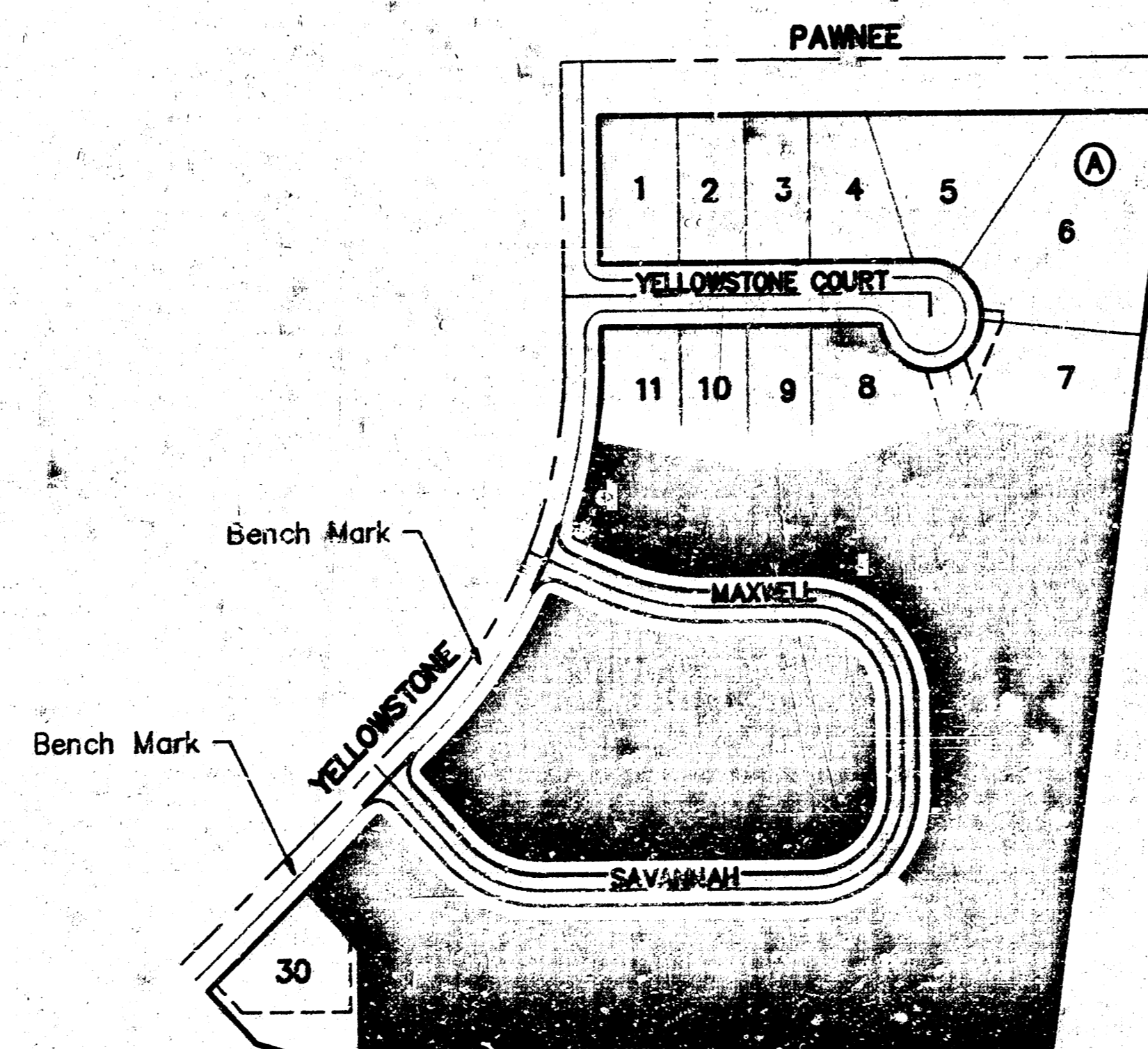
INDEX NO. 760140

### INDEX

1. TITLE SHEET
2. 29" TYPICAL PAVEMENT SECTION
3. VALLEY CUTTER DETAIL SHEET
4. VALLEY CUTTER DETAILS
5. MAXWELL
6. SAVANNAH
- 7-8. EARTHWORK CROSS SECTIONS
9. PLAT OF WOODLAND AT THE PARK



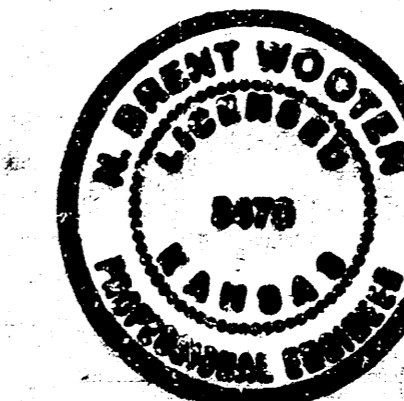
Scale: 1" = 150'



BENEFIT DISTRICT

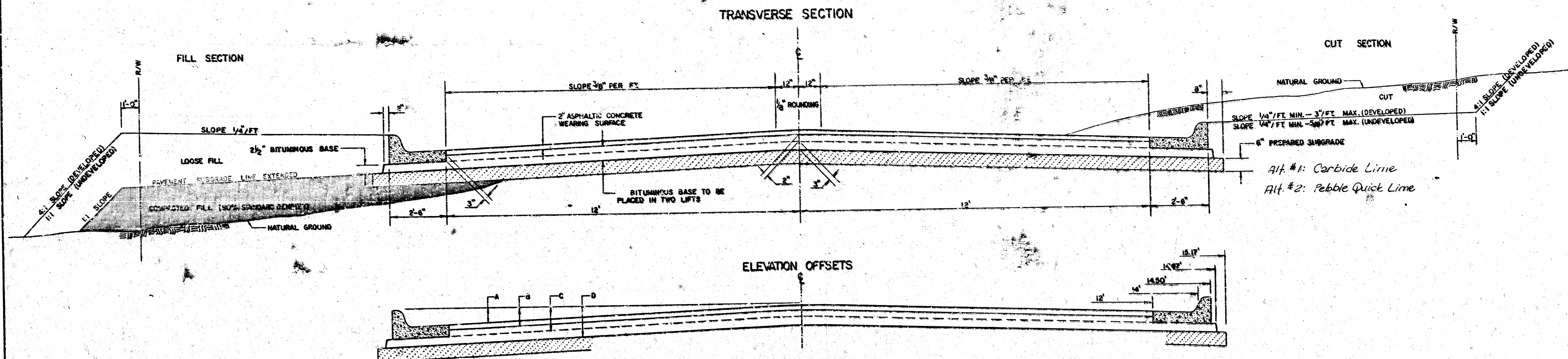
### GENERAL NOTES

1. Utility service lines, poles, valve boxes, meters, and etcetera are to be adjusted as necessary by others prior to construction unless the plans specifically call for their adjustment by the Contractor or unless the plans specifically identify a utility to be adjusted by its owner during construction. Existing utilities and their location, as shown on the plans, represent the best information obtainable for design. The contractor will be required to work around existing utilities within the right-of-way which do not conflict with proposed construction.
2. No more than 4 drives 18 feet in width, or equivalent combinations thereof, are to be constructed with this project.
3. Trees and shrubs in public right-of-way which are in direct conflict with proposed new construction shall be removed by the Contractor with the Engineer's approval. Trees and shrubs which are not in direct conflict with proposed new construction shall be saved and protected from damage.
4. The Contractor shall be responsible for preserving property irons. The Contractor will be required to re-establish any property irons which are damaged or destroyed by his construction operations. Such irons shall be re-established by a licensed land surveyor in accordance with state laws.

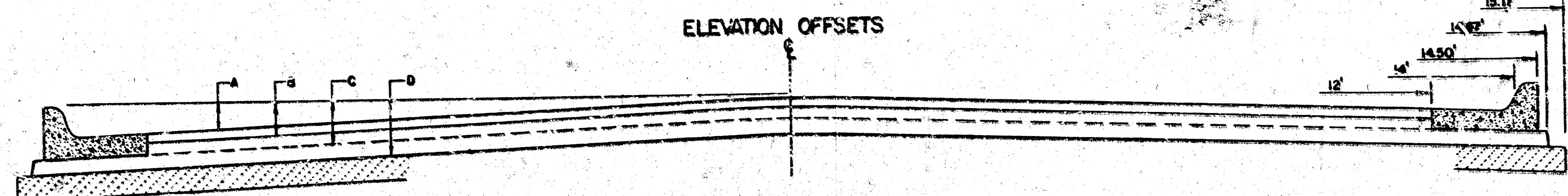


August 20, 1989  
**BAUGHMAN COMPANY P. A.**  
SURVEYING & ENGINEERING  
316/282-7271 • 315 ELLIS • WICHITA, KANSAS 67211

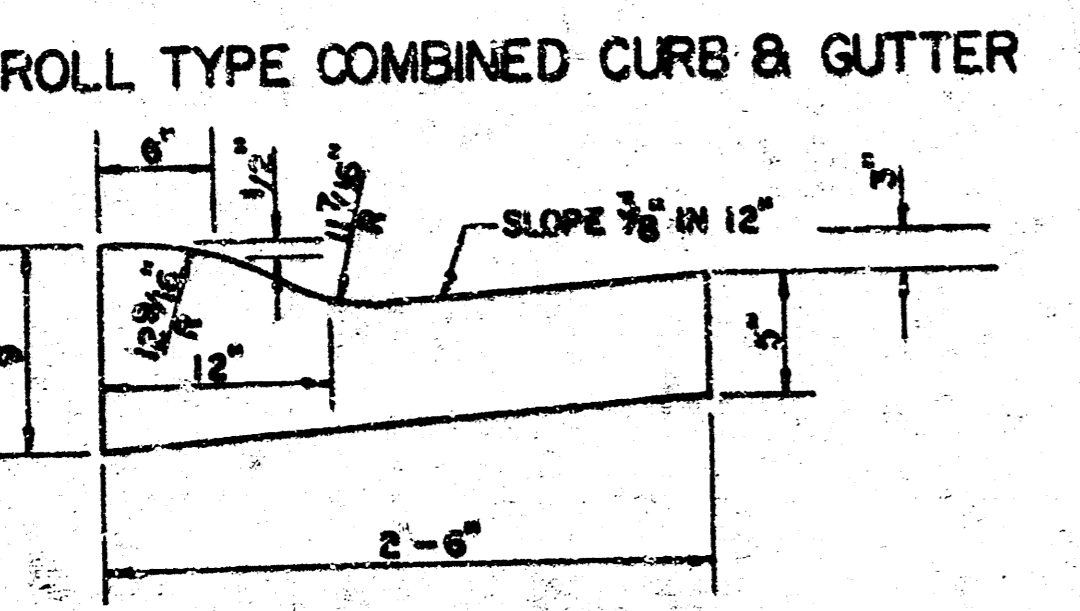
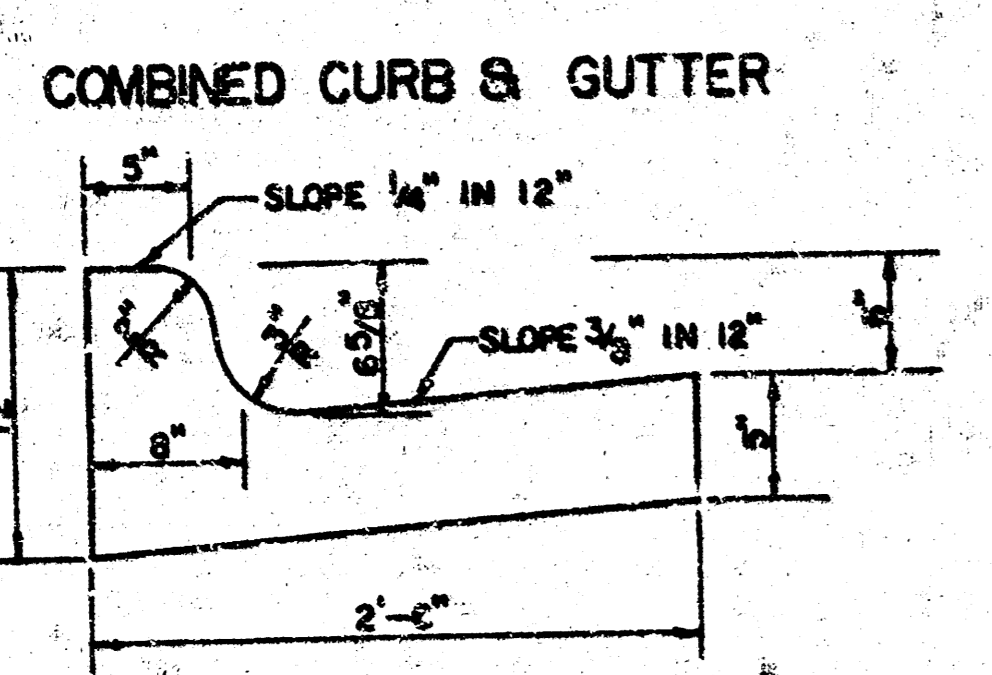
# TYPICAL 29' PAVEMENT DETAILS



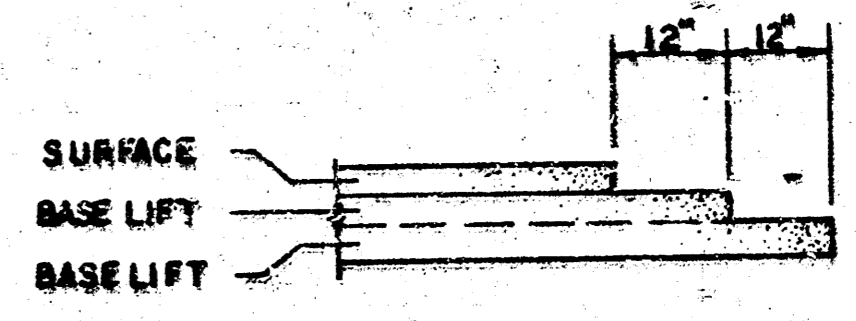
Alt #1: Carbide Lime  
Alt #2: Pebble Quick Lime



	DISTANCE FROM CENTERLINE (L.F. @ RT)												
	0'	2'	4'	6'	7'	8'	10'	12'	14'	14.5'	14.67'	15.17'	
A: TOP OF CURBS TO TOP OF SURFACE LIFT	0.13	0.16	0.24	0.30	0.33	0.36	0.43	0.49	—	—	—	—	
B: TOP OF CURBS TO TOP OF UPPER BASE LIFT	0.30	0.36	0.41	0.47	0.50	0.53	0.50	0.66	—	—	—	—	
C: TOP OF CURBS TO TOP OF LOWER BASE LIFT	0.47	0.52	0.60	0.68	0.71	0.75	0.83	0.90	0.98	1.00	1.01	—	
D: TOP OF CURBS TO TOP OF SUBGRADE	0.72	0.77	0.84	0.91	0.94	0.98	1.05	1.12	1.19	1.21	1.21	1.23	



## TRANSVERSE CONSTRUCTION JOINTS

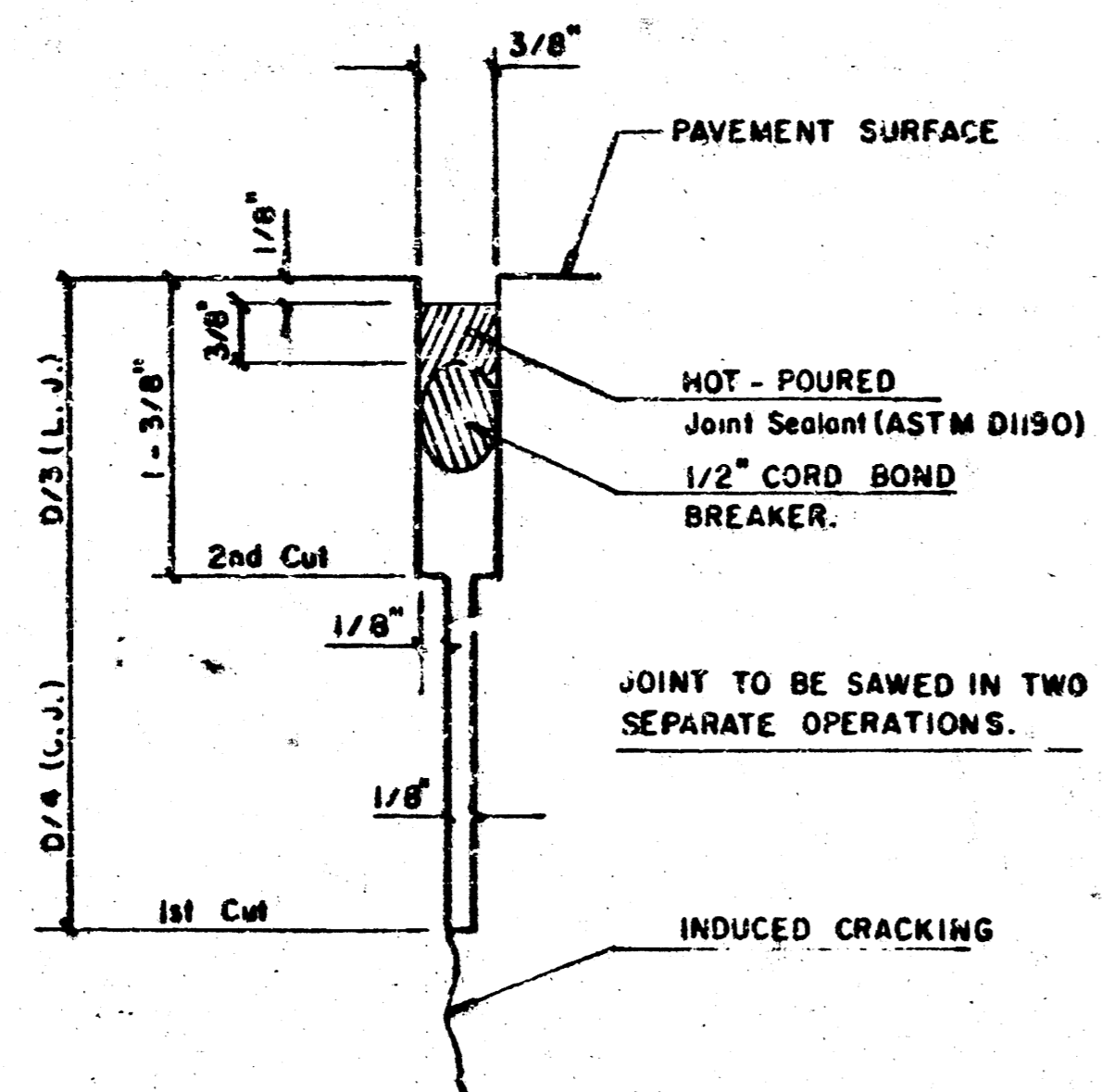


TRANSVERSE CONSTRUCTION JOINTS SHALL BE CONSTRUCTED IN FLEXIBLE BASE PAVEMENTS AT LOCATIONS WHERE PAVEMENT JOINS EXISTING FLEXIBLE BASE PAVEMENT AS SHOWN BY THE DETAIL. ALL COSTS ASSOCIATED WITH THE CONSTRUCTION OF THE TRANSVERSE JOINT SHALL BE INCLUDED IN THE BID PRICE FOR SQUARE YARDS 7" ASPHALTIC CONCRETE (5" BITUMINOUS BASE).

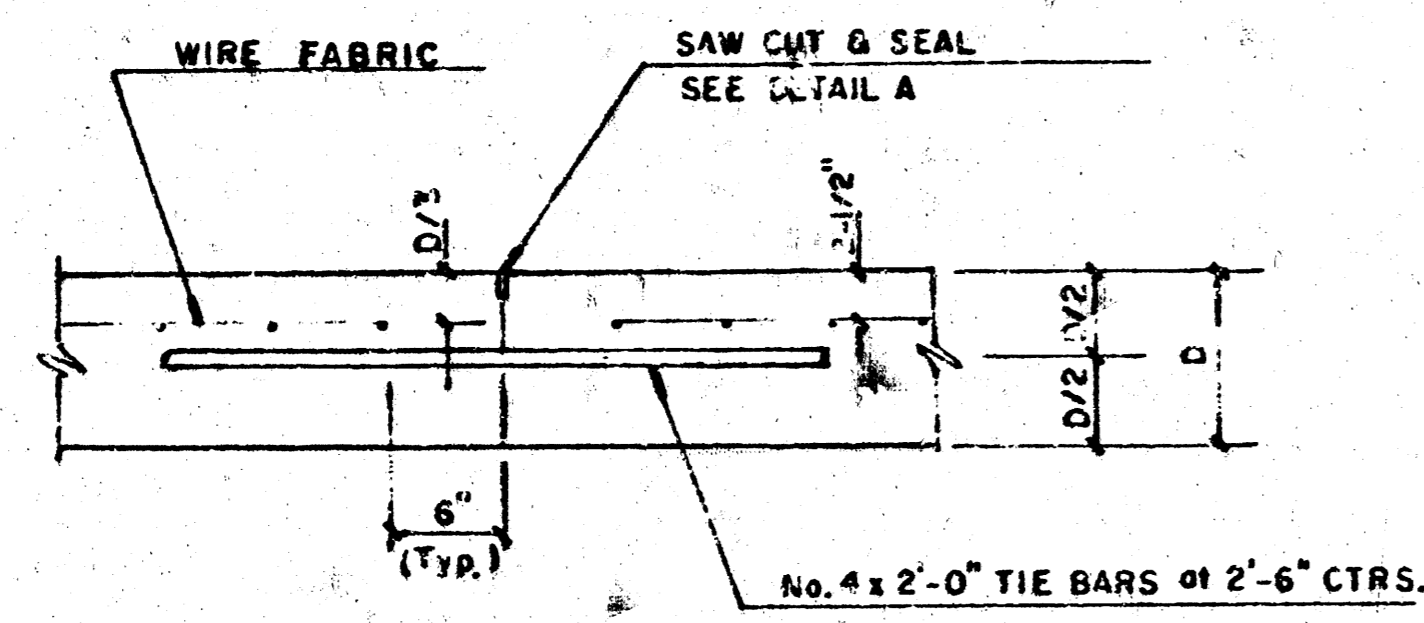
## GENERAL NOTES

- 1) THE ASPHALTIC CONCRETE PAVEMENT BETWEEN THE COMBINED CURB AND GUTTER SHALL BE PAID AS SQUARE YARDS OF 7" ASPHALTIC CONCRETE (5" BITUMINOUS BASE).
- 2) THE BITUMINOUS BASE UNDER AND BEHIND THE COMBINED CURB AND GUTTER SHALL BE PAID AS SQUARE YARDS OF 2 1/2" BITUMINOUS BASE.
- 3) A TACK COAT OF ENHANCED ASPHALT (SC-1H OR CSS-1H) SHALL BE APPLIED AT AN APPROXIMATE RATE OF 0.05 GALLONS PER SQUARE YARD BETWEEN EACH LIFT OF ASPHALTIC MATERIAL.
- 4) BITUMINOUS BASE AND ASPHALTIC CONCRETE WEARING SURFACE SHALL BE PLACED WITH A LAYDOWN MACHINE HAVING AUTOMATIC CONTROLS FOR LINE AND GRADE.
- 5) CONSTRUCTION JOINTS IN EACH LIFT SHALL BE STAGGERED A MINIMUM DISTANCE OF ONE (1) FOOT FROM JOINTS IN PRECEDING LIFTS AND PLACED SO THAT A JOINT WILL BE CONSTRUCTED ON THE CENTERLINE OF THE TOP LIFT.
- 6) CONTRACTOR TO BID ONLY ONE SUBGRADE TREATMENT ALTERNATE WHEN ALTERNATES ARE PROVIDED IN THE PROPOSAL AND CONTRACT. THE ALTERNATE CHOSEN BY THE SUCCESSFUL BIDDER SHALL BE USED IN CONSTRUCTING THIS PROJECT.

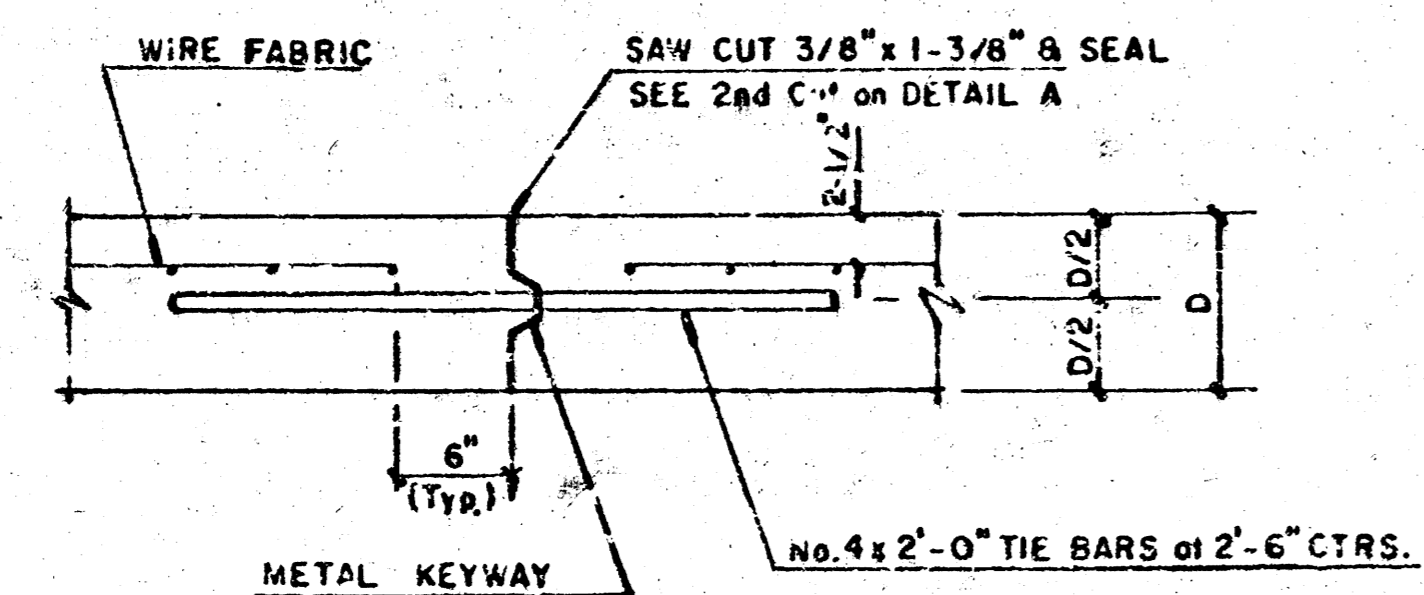
7 INCH RESIDENTIAL ASPHALTIC CONCRETE PAVEMENT WITH 5 INCH BITUMINOUS BASE  
CITY OF WICHITA, KANSAS  
PROJECT NUMBER  
472-76-245-8180-000-000-001



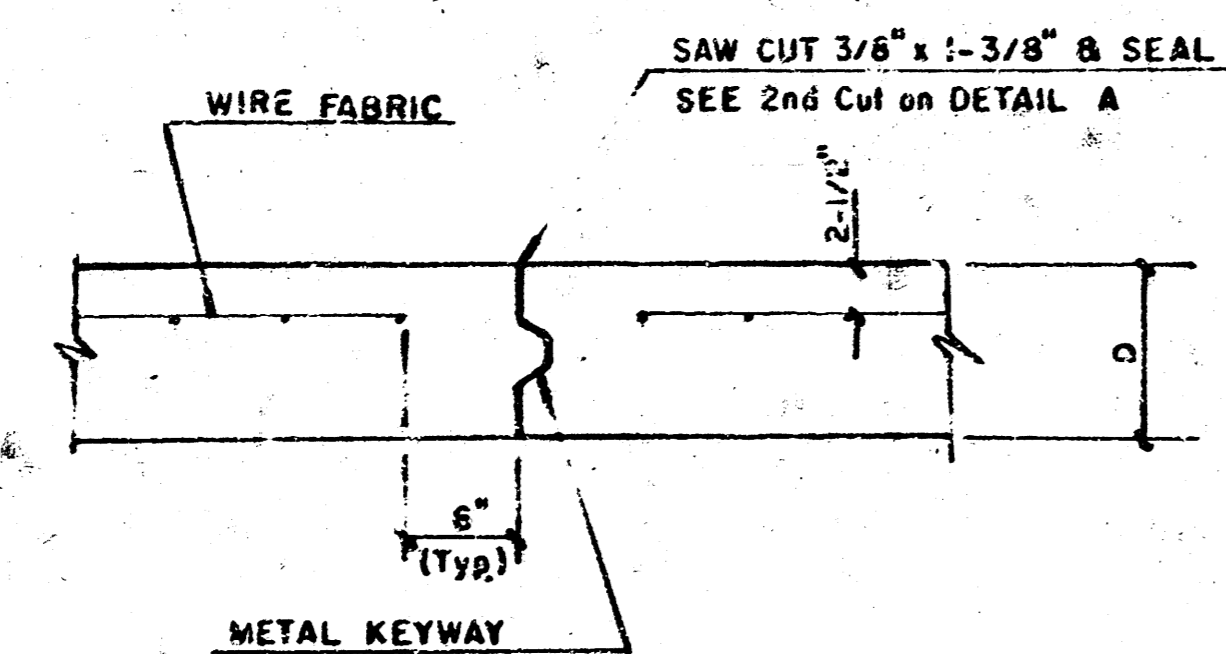
DETAIL A



LONGITUDINAL JOINT DETAIL (L.J.)

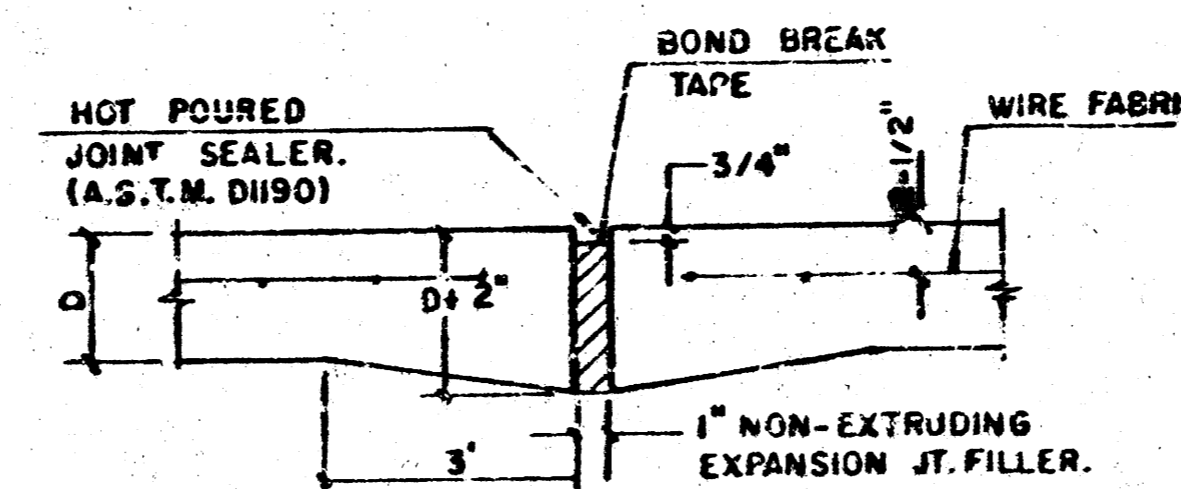


OPTIONAL LONGITUDINAL CONSTRUCTION JOINT (L.J.)  
(Alternate L.J.)



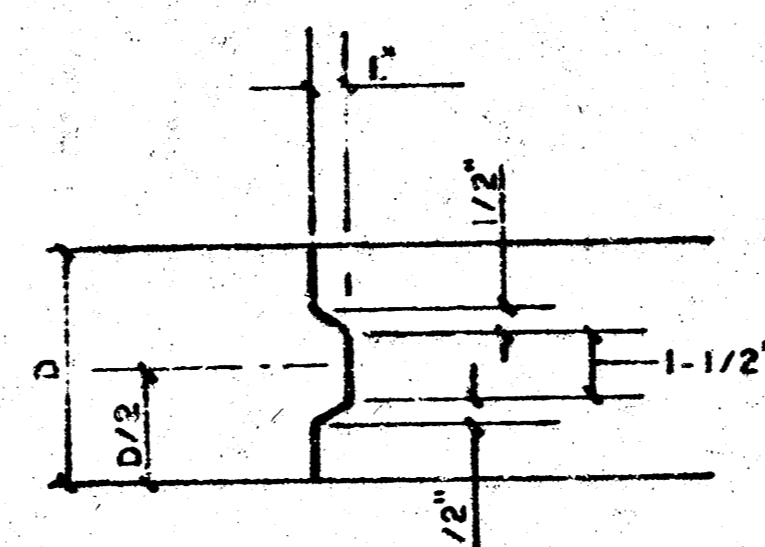
OPTIONAL CONTRACTION CONSTRUCTION JOINT (C.J.)  
(Alternate C.J.)

NOTE: ALL CONCRETE VALLEY GUTTER REINFORCEMENT SHALL BE ADEQUATELY SUPPORTED BY BAR CHAIRS IN THE REQUIRED POSITION UNLESS APPROVED OTHERWISE BY THE ENGINEER.

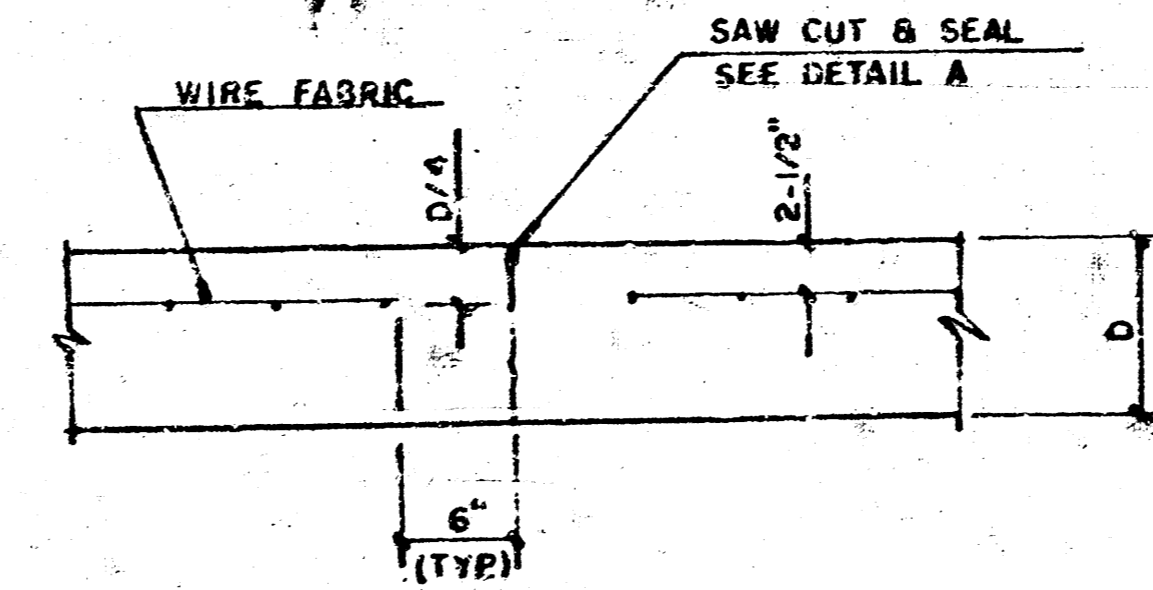


EXPANSION JOINT

NOTE: EXTRA THICKNESS TO BE SUBSIDIARY TO PRICE OF SQ YDS PAVEMENT.



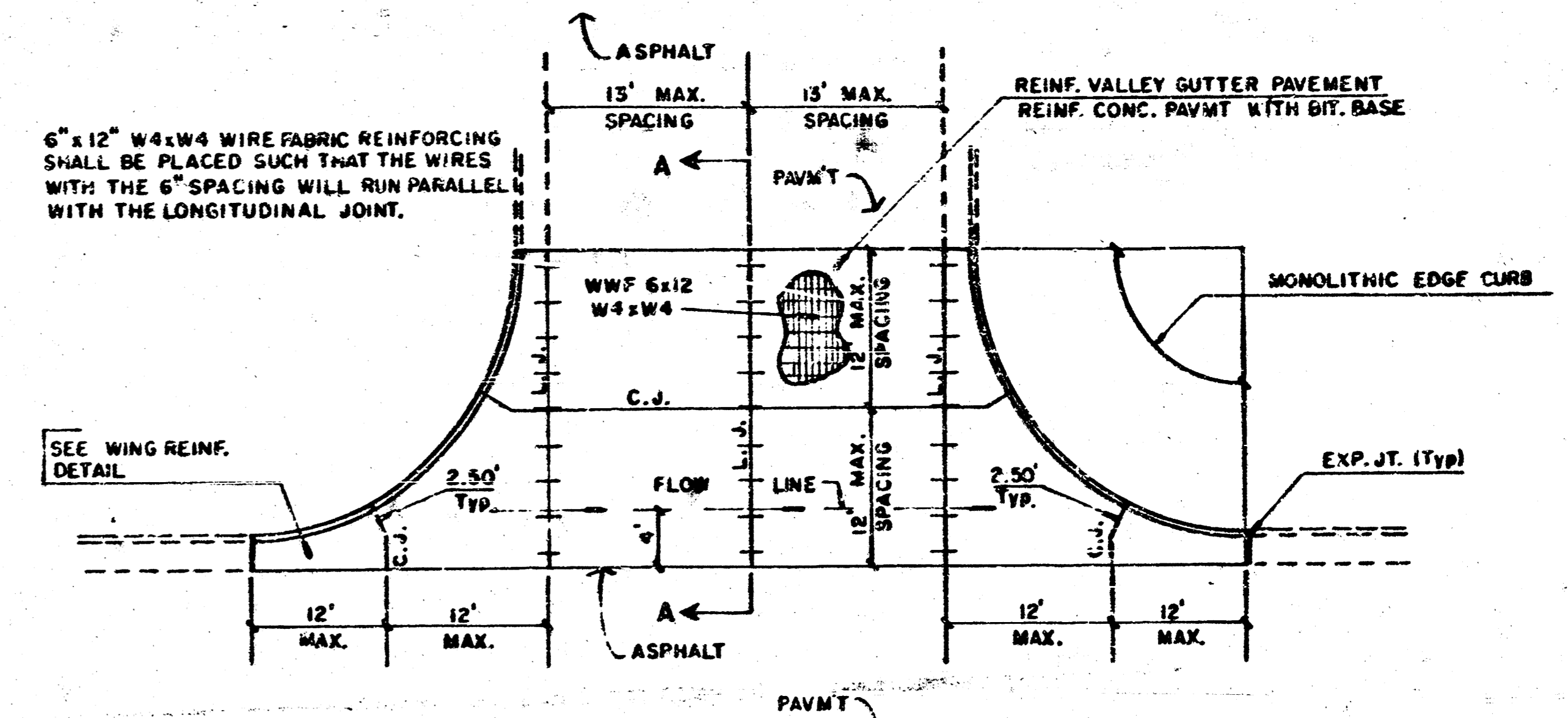
KEYWAY DETAIL



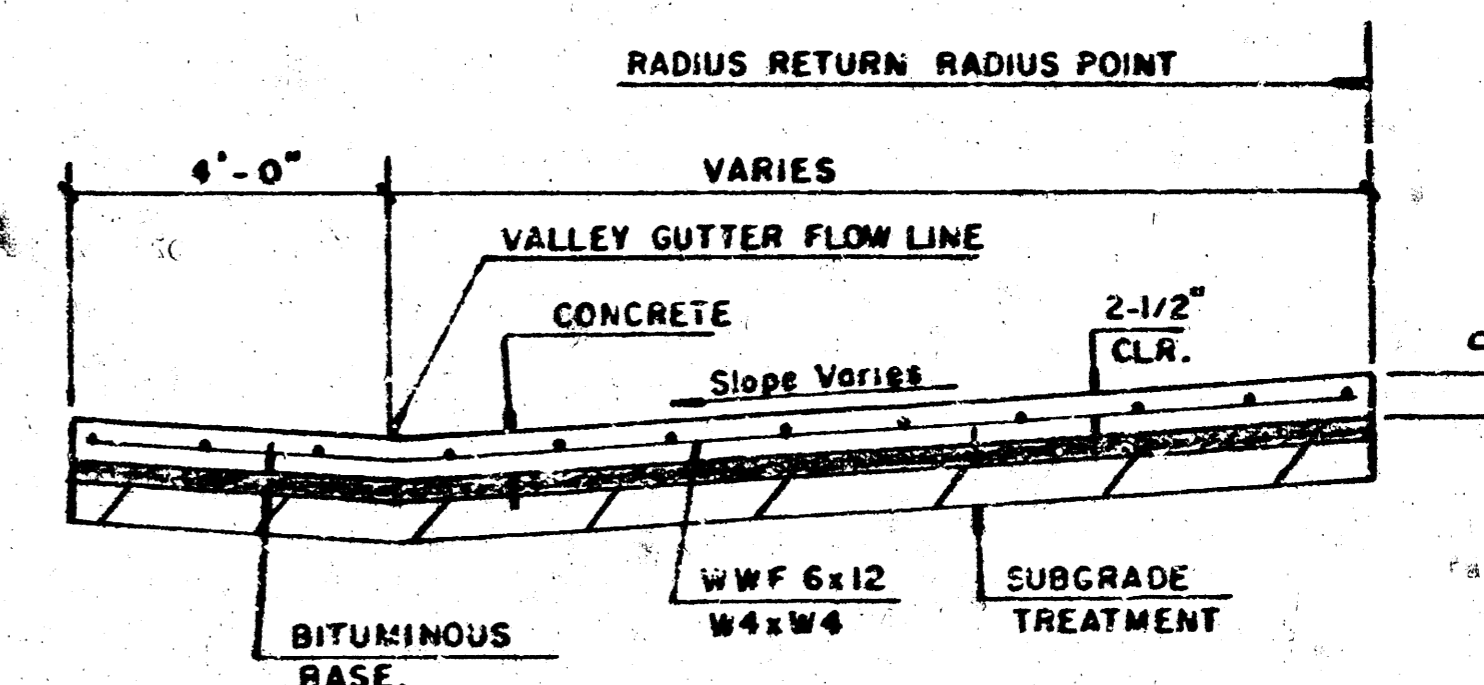
CONTRACTION JOINT DETAIL (C.J.)

LEGEND

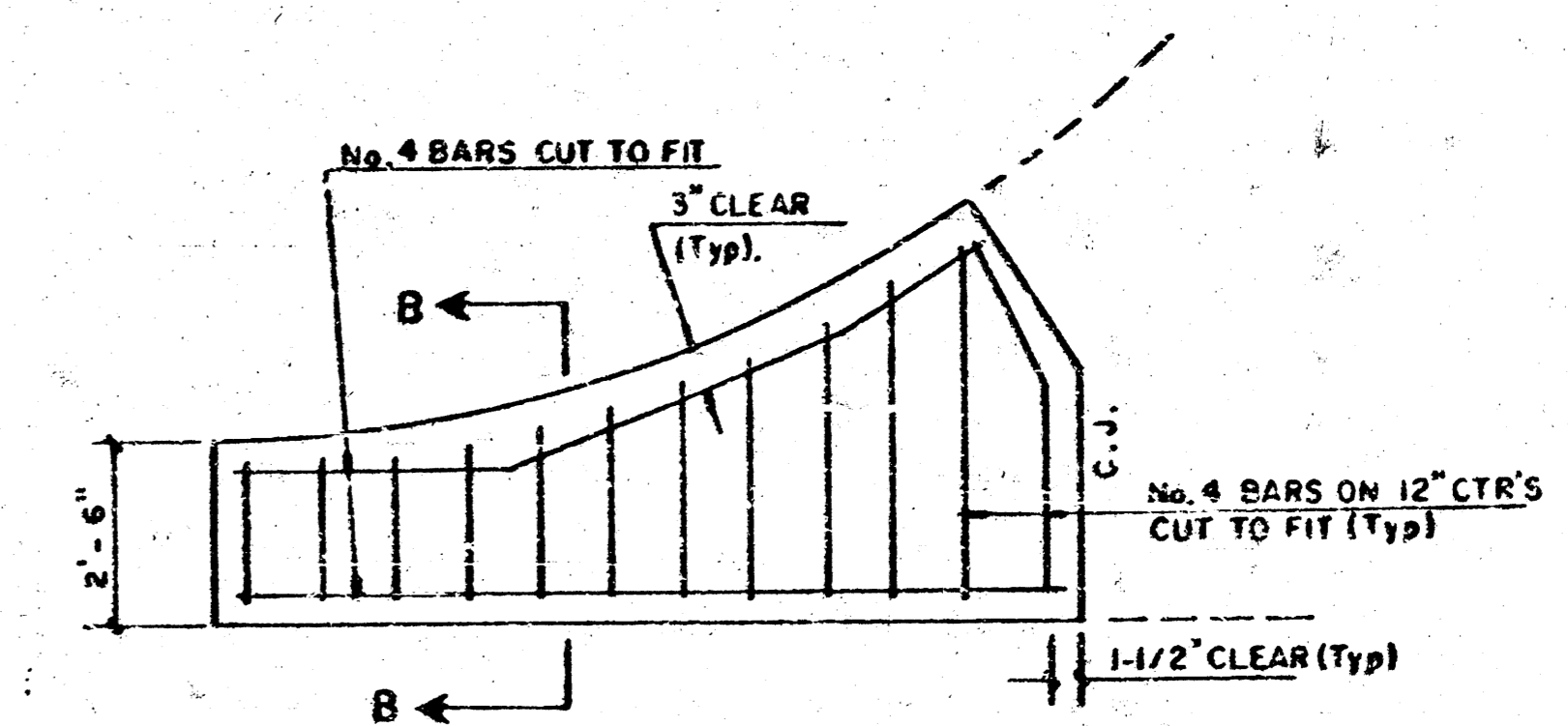
C.J. IDENTIFIES CONTRACTION JOINT  
L.J. IDENTIFIES LONGITUDINAL JOINT



PLAN  
REINFORCED VALLEY GUTTER

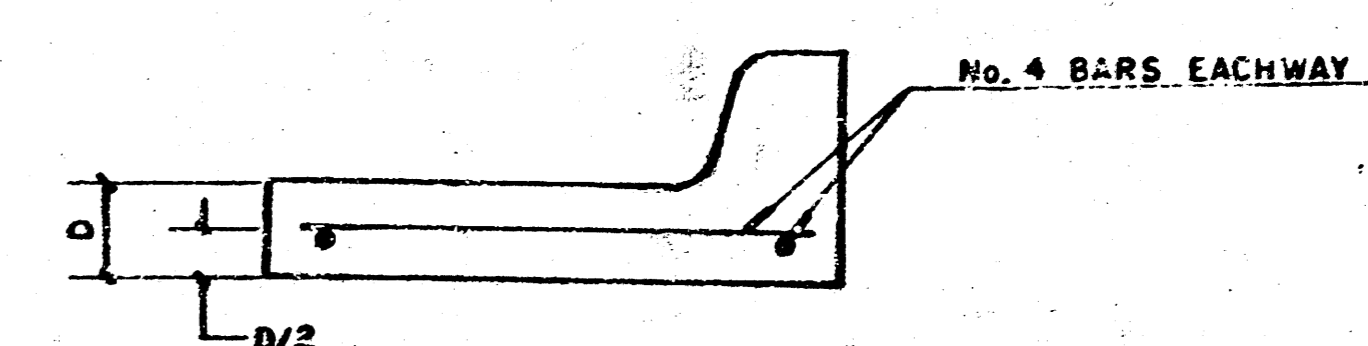


SECTION A-A



WING REINFORCING DETAIL

NOTE: OMIT WIRE FABRIC REINFORCING IN THIS SECTION.



SECTION B-B

PROJECT DESCRIPTION  
**VALLEY GUTTER DETAILS**  
PROJECT NUMBER  
472-76-245-61820-000-000-001

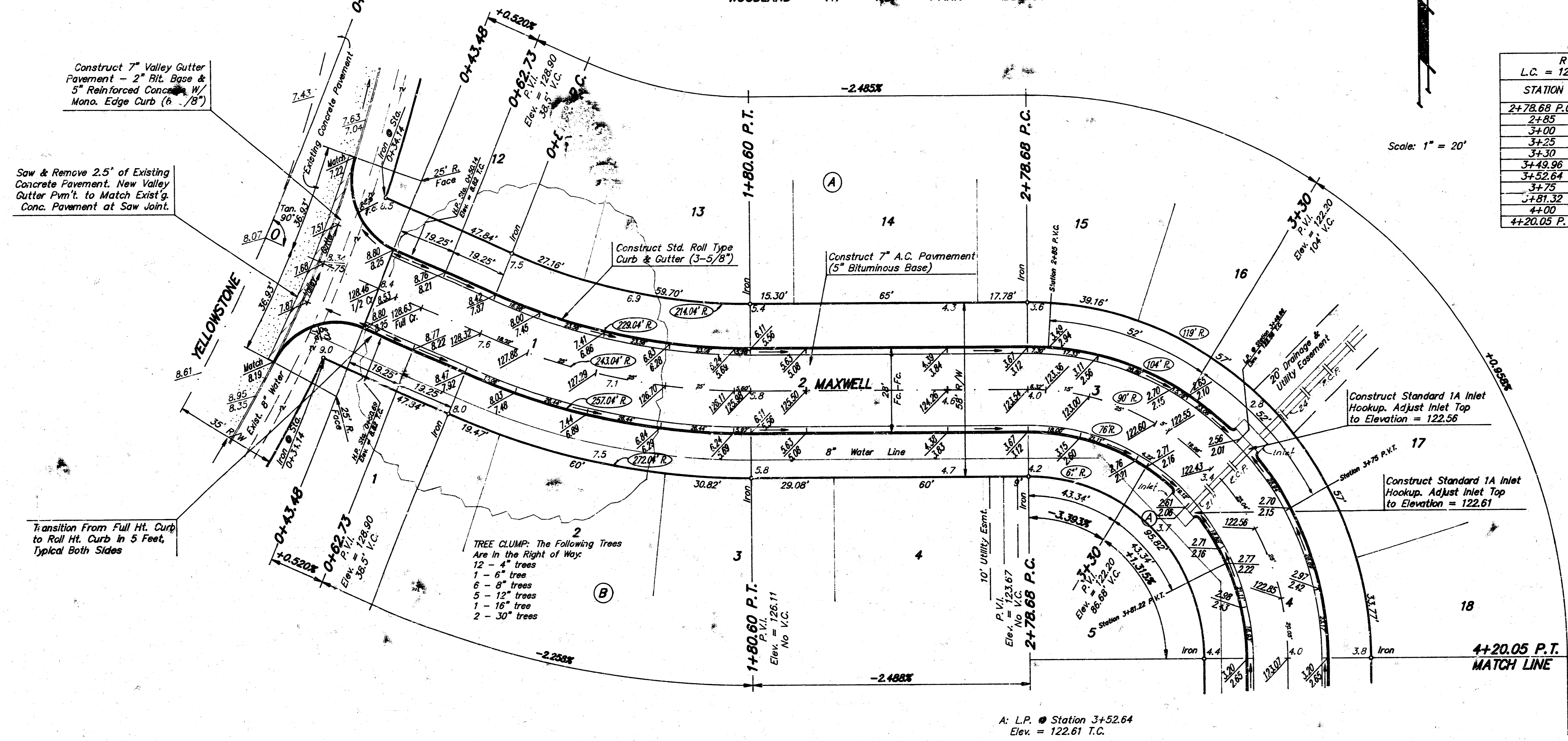
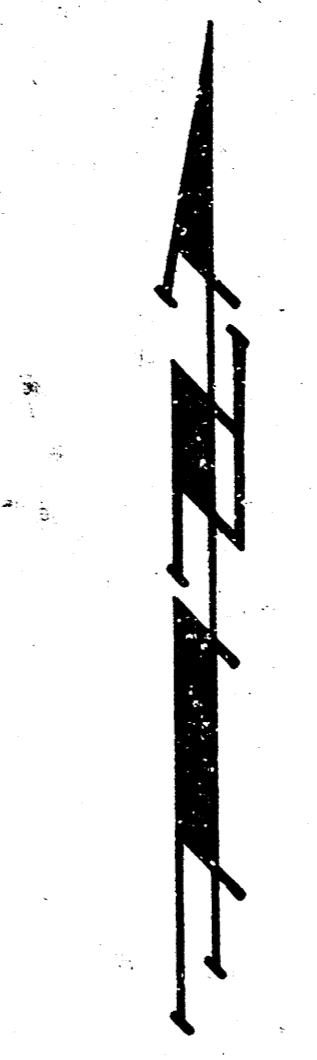


BENCH MARK: Square Cut in Top of Curb on the East Side of Yellowstone located at the Southwest Corner of Lot 29, Block A, Woodland at the Park Addition. Elev. = 133.25 City Datum

BENCH MARK: Square Cut in Top of Curb on the East Side of Yellowstone located at the Southwest Corner of Lot 1, Block B, Woodland at the Park Addition. Elev. = 129.97 City Datum

NOTE: ROLL TYPE CURB AND GUTTER TO BE CONSTRUCTED ON THIS STREET

WOODLAND AT THE PARK ADDITION



CURVE DATA BASED ON CENTERLINE

R = 90' Delta = 50' Tangent = 90'  
 L.C. = 127.28' Arc = 141.37' Def./Ft. = 19.0988 Min.

STATION	ARC	ARC LENGTHS 6" LT. FC	6" RT. FC	DEFL.	TOTAL DEFL.
2+78.68 P.C.	0	0	0	0°00'00"	0°00'00"
2+85	6.32'	7.86'	—	2°00'42"	2°00'42"
3+00	15'	18.64'	16.07'	4°46'29"	6°47'11"
3+25	25'	31.01'	18.83'	7°57'28"	14°44'39"
3+30	5'	6.22'	3.78'	1°35'30"	16°20'09"
3+48.96	19.96'	24.79'	—	6°21'13"	22°41'22"
3+52.64	2.68'	—	—	0°51'11"	23°32'33"
3+75	22.36'	31.06'	16.85'	7°07'03"	30°39'36"
3+81.32	6.32'	—	—	4°78'	32°40'18"
4+00	18.68'	23.21'	14.09'	5°56'46"	38°37'04"
4+20.05 P.T.	20.05'	24.90'	15.12'	6°22'56"	45°00'00"

CURVE DATA BASED ON CENTERLINE

R = 243.04' DELTA = 23°15' TAN = 50'  
 ARC LENGTH = 98.62' DEF./FT. = 7.07260 MIN.

STATION	ARC	ARC LENGTHS 6" LT. FC	6" RT. FC	DEFL.	TOTAL DEFL.
0+81.98 P.C.	0	0	0	0°00'00"	0°00'00"
1+00	18.02'	16.39'	19.65'	2°07'27"	2°07'27"
1+25	25'	22.73'	27.25'	2°56'49"	5°04'16"
1+50	25'	22.73'	27.25'	2°56'49"	8°01'05"
1+75	25'	22.73'	27.25'	2°56'49"	10°57'54"
1+80.60 P.T.	5.60'	5.09'	6.11'	0°39'36"	11°37'50"

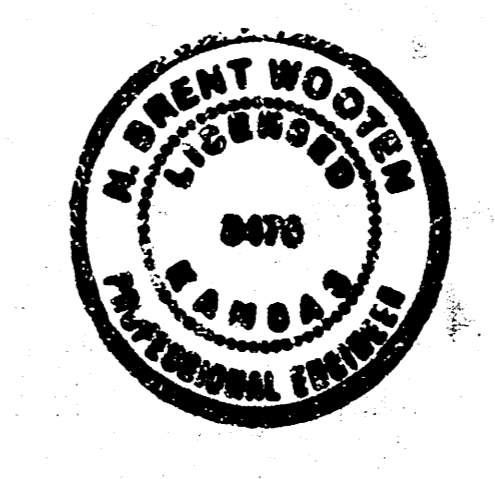
Earthwork Totals

Excavation = 1915.3 C.Y.      Comp. Fill = 0 C.Y.

110% = 191.5 C.Y.

Total = 2106.8 C.Y.

Subgrade Stabilization Manipulation = 5700 S.Y.



**MAXWELL**

**BAUGHMAN COMPANY P. A.**  
 SURVEYING & ENGINEERING  
 316/262-7271 • 315 ELLIS • WICHITA, KANSAS 67211

PROJECT NUMBER  
**472-78-245-81820-000-001**

DESIGN C. Bohm	DRAWN C. Bohm	APPROVED N.B.W.	DATE 8/89	SCALE 1" = 20'
-------------------	------------------	--------------------	--------------	-------------------

SHEET 5 OF 9

BENCH MARK: Square Cut in Top of Curb on the East Side of Yellowstone located at the Southwest Corner of Lot 29, Block B, Woodland at the Park Addition. Elev. = 133.25 City Datum

BENCH MARK: Square Cut in Top of Curb on the East Side of Yellowstone located at the Southwest Corner of Lot 1, Block B, Woodland at the Park Addition. Elev. = 129.97 City Datum

CURVE DATA BASED ON CENTERLINE

R = 116.38' DELTA = 46°30' TAN = 50.00'  
 ARC = 94.45' L.C. = 91.88' DEF/FT. = 14.7697 MIN.

STATION	ARC	ARC LENGTHS		DEFL.	TOTAL DEFL.
		# LT. FC.	# RT. FC.		
1+10 P.C.	0	0	0	0°00'00"	0°00'00"
1+25	15	12.15	17.82	3°41'33"	3°41'33"
1+50	25	20.23	29.67	6°09'14"	6°09'14"
1+75	25	20.23	29.67	6°09'14"	12°18'28"
2+00	25	20.23	29.67	6°09'14"	18°27'42"
2+04.45 P.T.	4.45	3.61	3.29	1°05'44"	19°33'26"

CURVE DATA BASED ON CENTERLINE

R = 96' DELTA = 90° TAN = 90°  
 ARC = 141.37' L.C. = 127.28' DEF/FT. = 19.0988 MIN.

STATION	ARC	ARC LENGTHS		DEFL.	TOTAL DEFL.
		# LT. FC.	# RT. FC.		
4+64.45 P.C.	0	0	0	0°00'00"	0°00'00"
4+75	10.55	7.97	13.12	7°57'28"	7°57'28"
5+00	25	18.83	31.01	15°54'56"	15°54'56"
5+25	25	18.83	31.01	15°54'56"	31°49'52"
5+50	25	18.83	31.01	15°54'56"	47°44'48"
5+75	25	18.83	31.01	15°54'56"	63°39'44"
6+00	25	18.83	31.01	15°54'56"	79°34'40"
6+05.82 P.T.	5.82	4.40	7.24	1°51'09"	81°25'49"

Scale: 1" = 20'

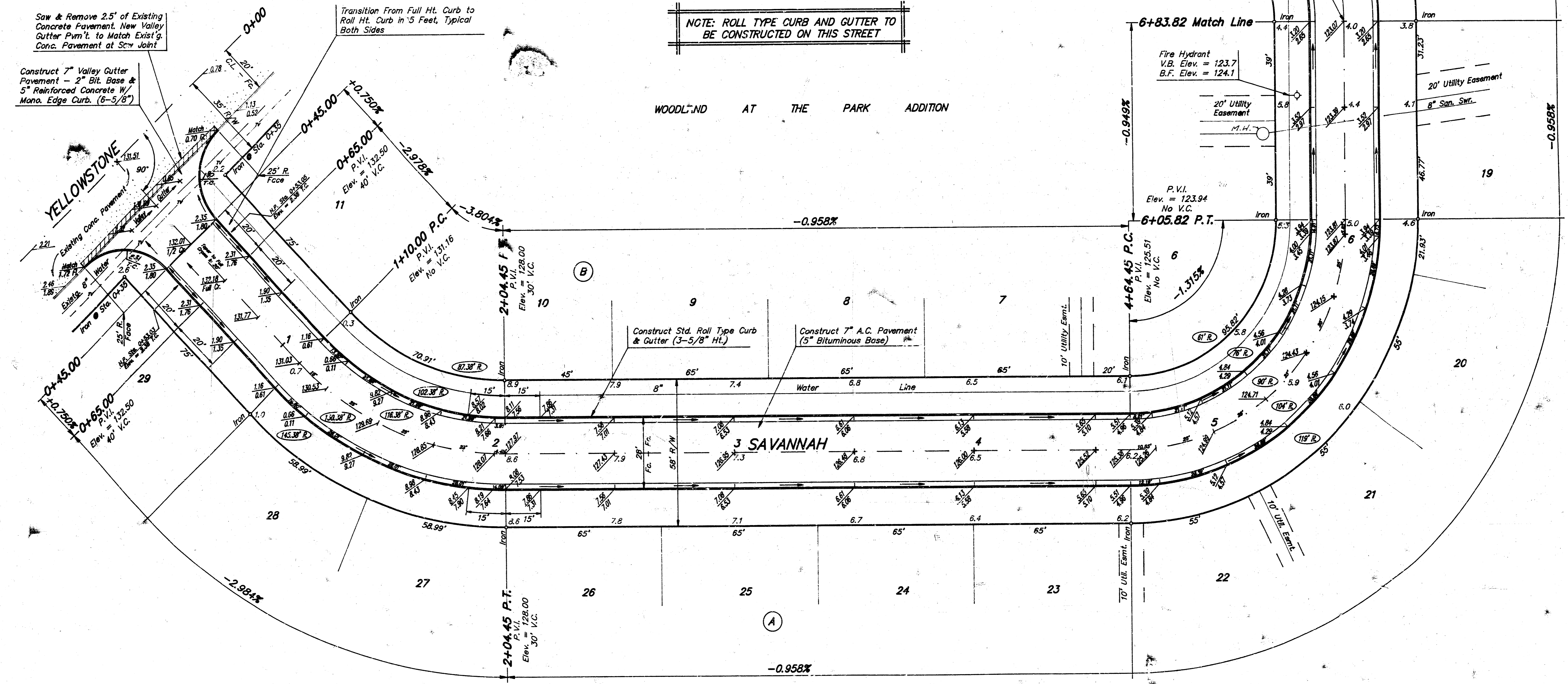
Saw & Remove 2.5' of Existing Concrete Pavement. New Valley Gutter Pvm't. to Match Exist'g. Conc. Pavement at Scv Joint

Construct 7" Valley Gutter Pavement - 2" Bit. Base & 5" Reinforced Concrete W/ Mono. Edge Curb. (5-5/8")

Transition From Full Ht. Curb to Roll Ht. Curb in 5 Feet, Typical Both Sides

NOTE: ROLL TYPE CURB AND GUTTER TO BE CONSTRUCTED ON THIS STREET

WOODLAND AT THE PARK ADDITION



**SAVANNAH**

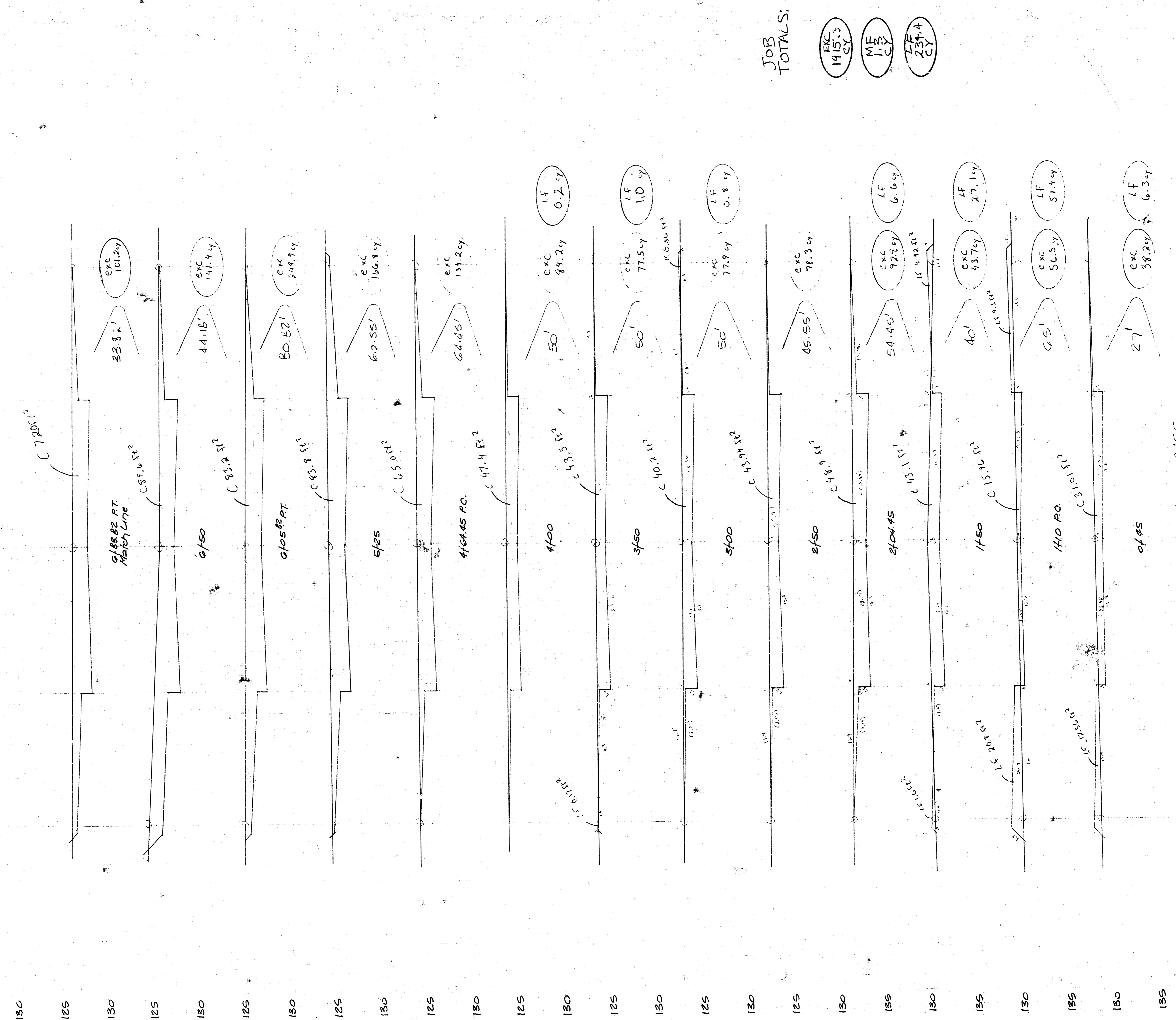
**BAUGHMAN COMPANY P. A.**  
 SURVEYING & ENGINEERING  
 316/282-7271 • 315 ELLIS • WICHITA, KANSAS 67211

PROJECT NUMBER  
**472-78-245-81820-000-001**

DESIGN	DRAWN	APPROVED	DATE	SCALE
C. Bohm	C. Bohm	N.B.W.	8/89	1" = 20'

REV. SHEET  
 6 OF 9





JOB TOTALS:

EXC 1415.3 CY  
 ME 1.3 CY  
 LF 234.4 CY

PAGE TOTAL: EXC 1342.6 CY  
 LF 93.4 CY

018 SAVANNAH 10 20 30

