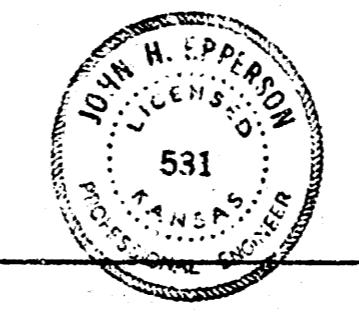
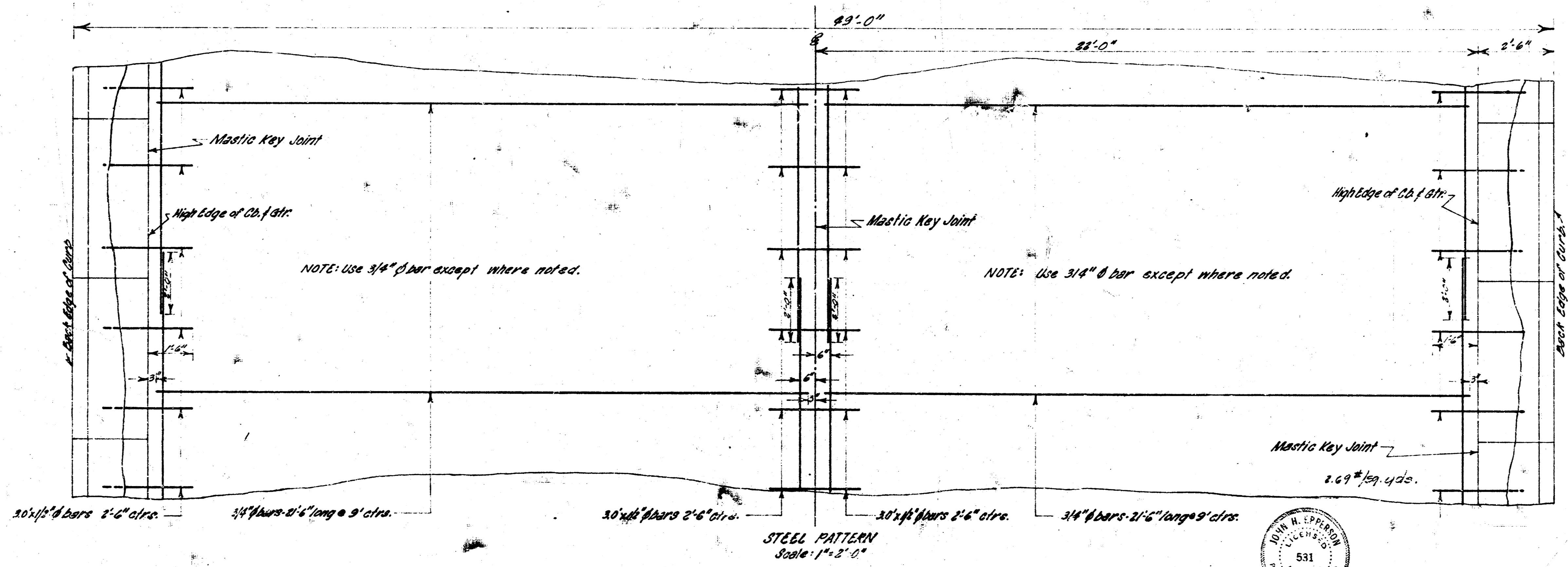
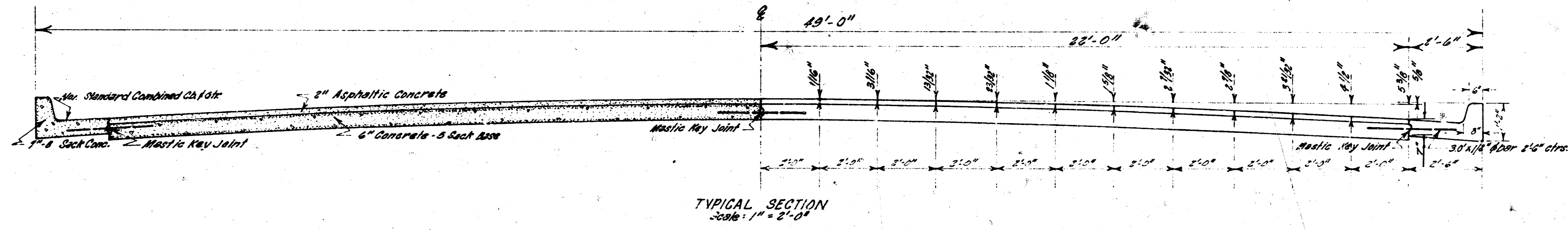


WOODLAWN BOULEVARD
C10-55

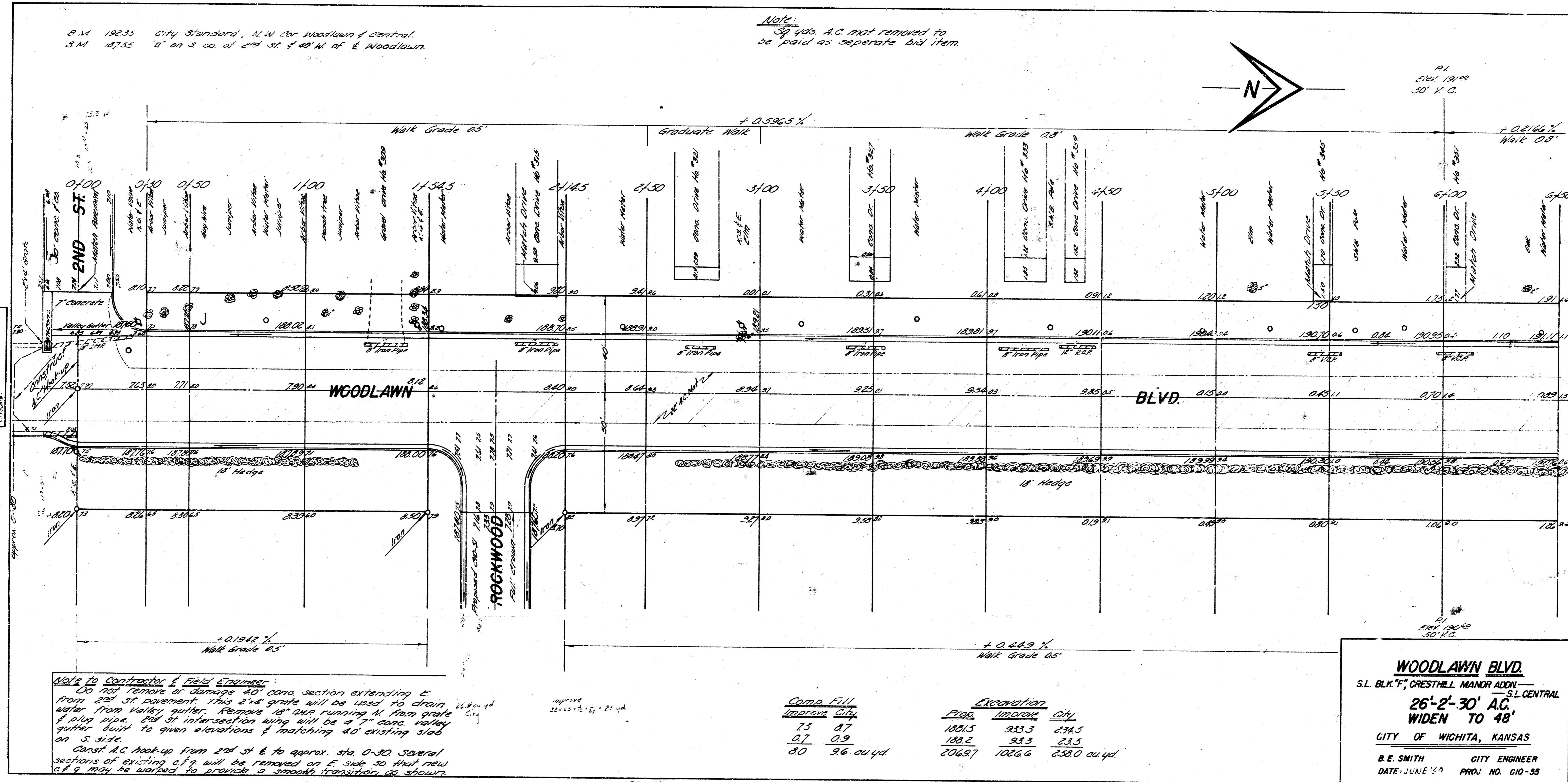
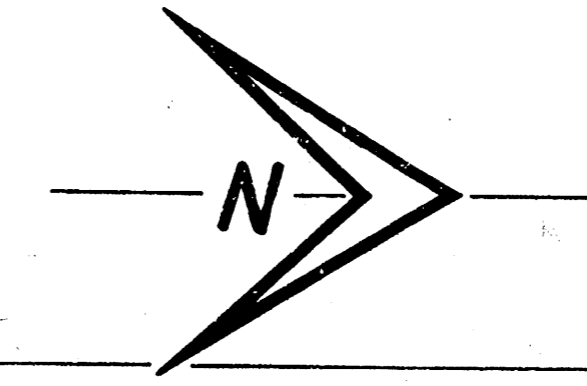
S.L. BLK "F" CRESTHILL MANOR ADDN. TO S.L. CENTRAL AVENUE



COVER
 ON
 5

C.M. 19255 City Standard, N.W. cor. Woodlawn & Central.
 S.M. 18755 "D" on S. cor. of 2nd St. & 40' W. of E. Woodlawn.

Note:
 37,405 A.C. not removed to
 be paid as separate bid item.



Notes to Contractor & Field Engineer:
 Do not remove or damage 40' conc. section extending E from 2nd St. pavement. This 2' x 4' grate will be used to drain water from valley gutter. Remove 18" dia. pipe running N. from grate of 2nd St. at intersection with 18" dia. conc. valley gutter built to given elevations of matching 40' existing slab on S. side.
 Const. A.C. hook-up from 2nd St. E. to approx. sta. 0+30. Several sections of existing c.f.g. will be removed on E. side so that new c.f.g. may be worked to provide a smooth transition, as shown.

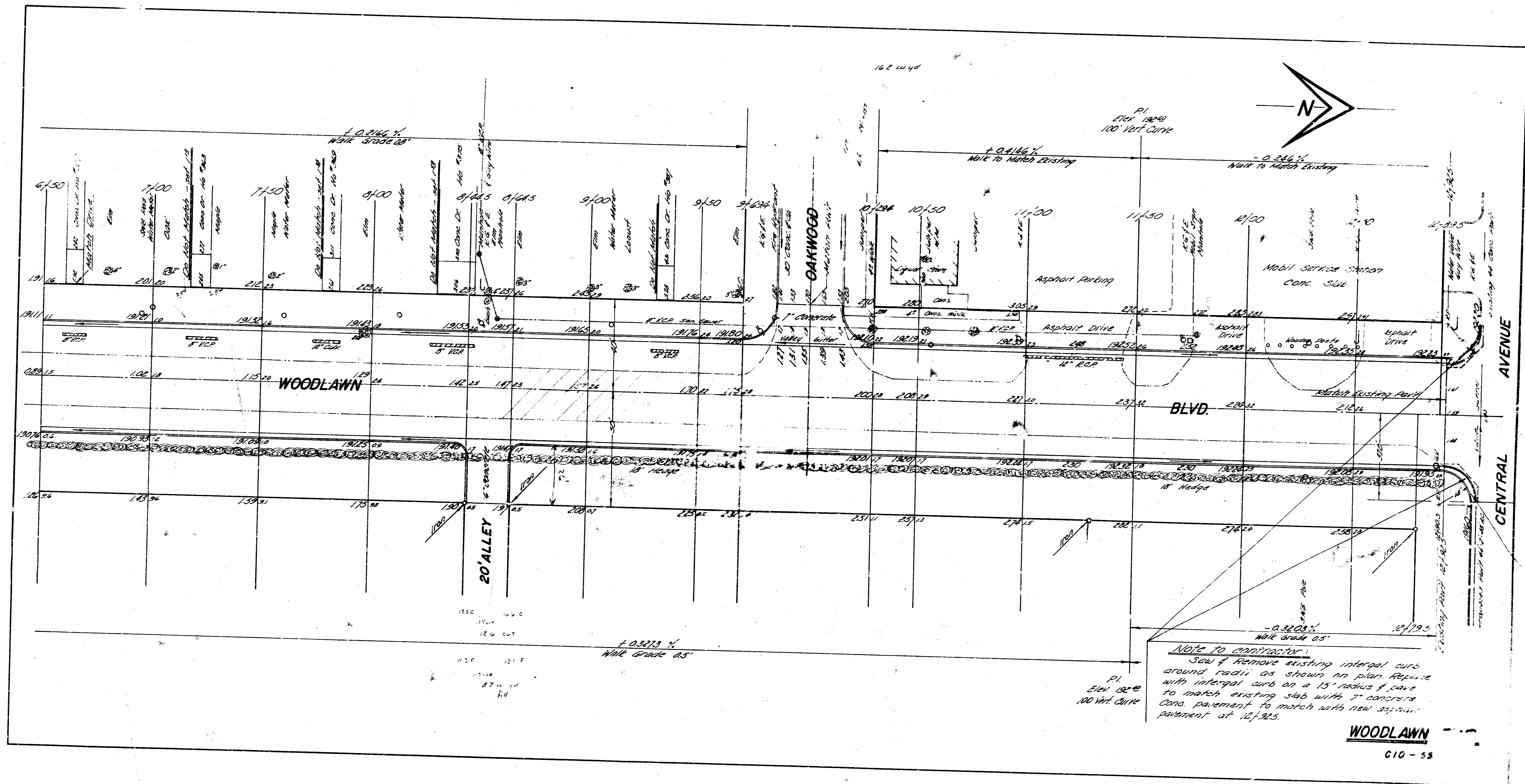
Comp. Fill

Prop.	Quantity
73	87
07	0.9
80	9.6 cu yd.

Excavation

Prop.	Quantity	City
10015	933.3	234.5
1002	933	23.5
20697	1086.6	2380 cu yd.

WOODLAWN BLVD.
 S.L. BLK. 7th CRESTHILL MANOR ADDN. — S.L. CENTRAL
26'-2"-30' A.C.
WIDEN TO 48'
 CITY OF WICHITA, KANSAS
 B.E. SMITH CITY ENGINEER
 DATE: JUNE 1919 PROJ. NO. C10-55



Note to contractor:
 Saw if remove existing intergal curb
 around radii as shown on plan. Replace
 with intergal curb on a 15' radius if care
 to match existing slab with concrete
 conc. pavement to match with new asphalt
 pavement at 12+22.5.

WOODLAWN
 C10-55