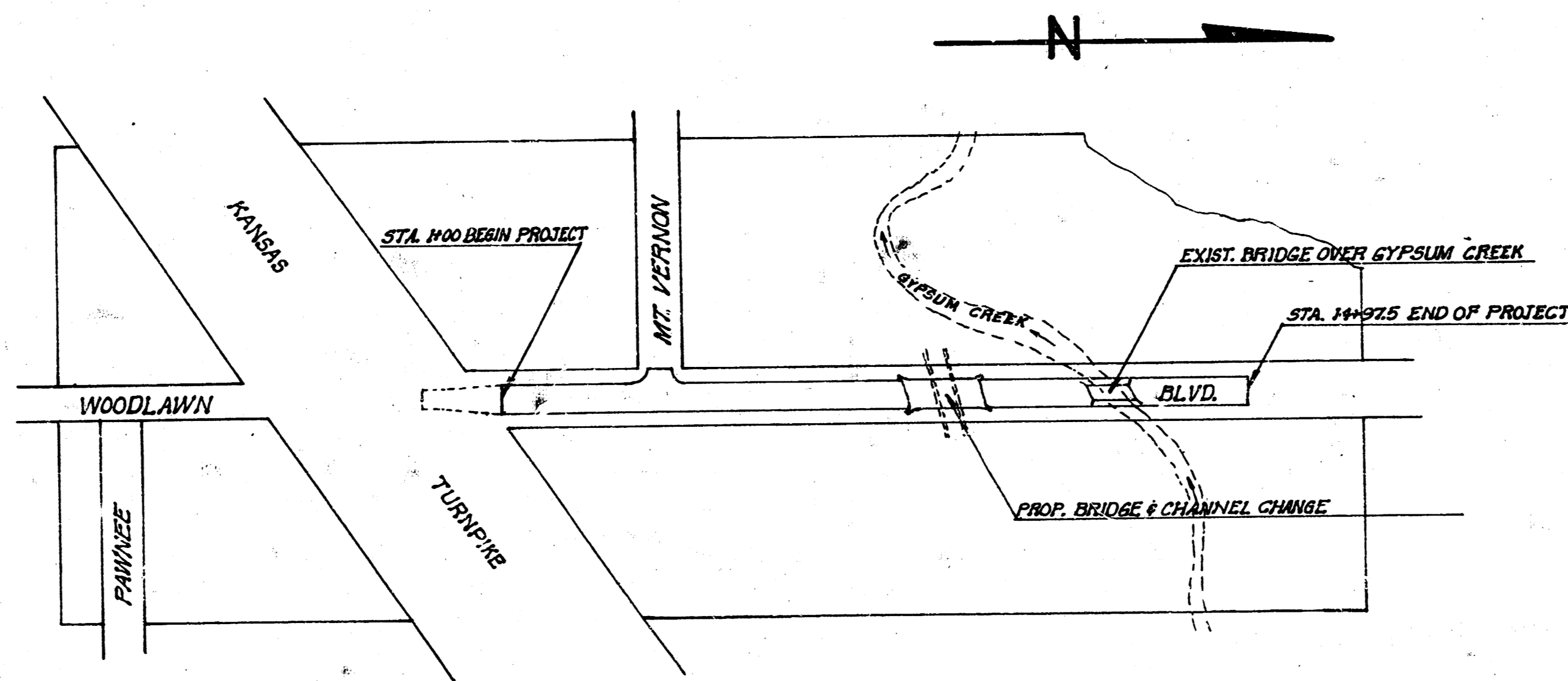


WOODLAWN BLVD, N. L. KANSAS TURNPIKE RIGHT-OF-WAY
 TO S. L. LINCOLN HILLS SECOND ADD'N.
 ASPHALTIC CONCRETE 44'-2"-48'
 CITY OF WICHITA, KANSAS
 R. W. LINN, CITY ENGINEER
 PROJ. NO. DAKM571018

Survey King
 E. W. Anderson
 Checked

INDEX	SHEET NO.
TITLE SHEET	1
TYPICAL SECTIONS	2
PLAN SHEETS	3-5
CONCRETE BRIDGE APPROACH DETAIL	6
CROSS-SECTIONS	7-16



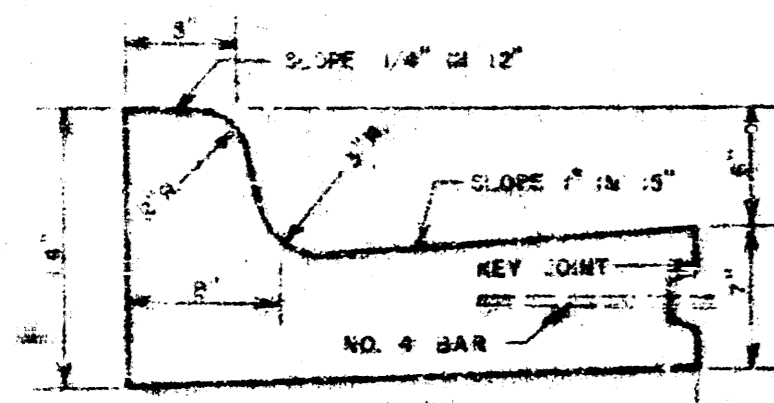
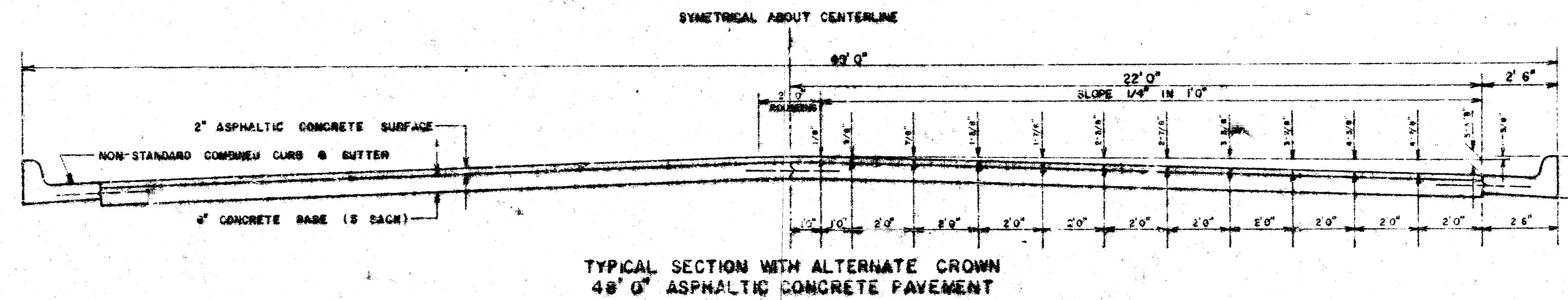
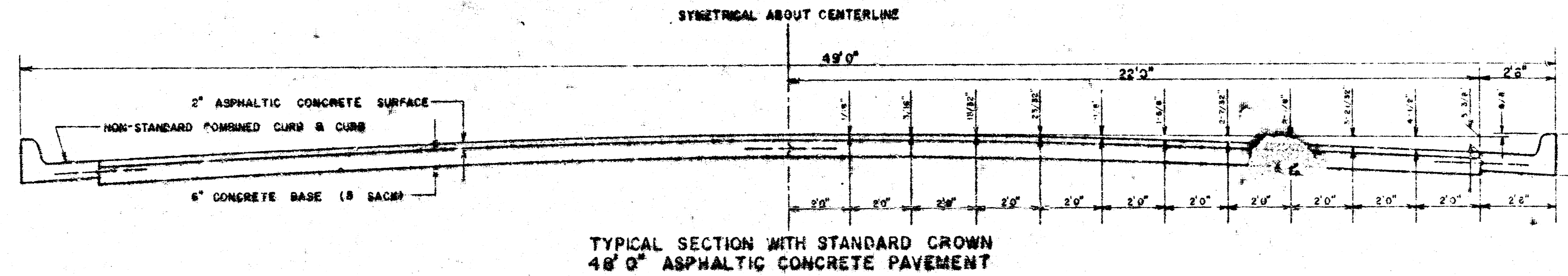
NOTES TO FIELD ENGINEER & CONTRACTOR

1. CONTRACTOR TO CLEAR RIGHT-OF-WAY, GRADE PARKINGS & COMPACT FILL FOR PROPOSED SIDEWALK. SIDEWALK TO BE CONSTRUCTED BY OTHERS.
2. FIELD ENGINEER TO DETERMINE THICKNESS OF ASPHALT MAT FOR FINAL CALCULATION OF EXCAVATION QUANTITIES. AN ASSUMED THICKNESS OF 7" WAS USED TO ESTIMATE THE EARTHWORK QUANTITIES.
3. PERMISSION OF PROPERTY OWNER TO BE GRANTED BEFORE ANY WORK IS DONE ON PRIVATE PROPERTY.
4. COST FOR REMOVAL OF ASPHALT MAT DRIVES TO BE PAID AS SQ. YDS. ASPHALT MAT REMOVED.
5. RELOCATION OF EXISTING UTILITIES TO BE COORDINATED WITH THIS PROJECT TO CAUSE LEAST AMOUNT OF INTERFERENCE WITH PAVING CONTRACTOR.
6. BORROW EXCAVATION TO BE OBTAINED FROM BORROW AREA SOUTH OF GYPHUM CREEK & EAST OF WOODLAWN BLVD. BORROW MATERIAL TO BE PAID AS CU YDS. OF EXCAVATION & CU YDS. OF COMP. FILL IN PLACE ON PROJECT.

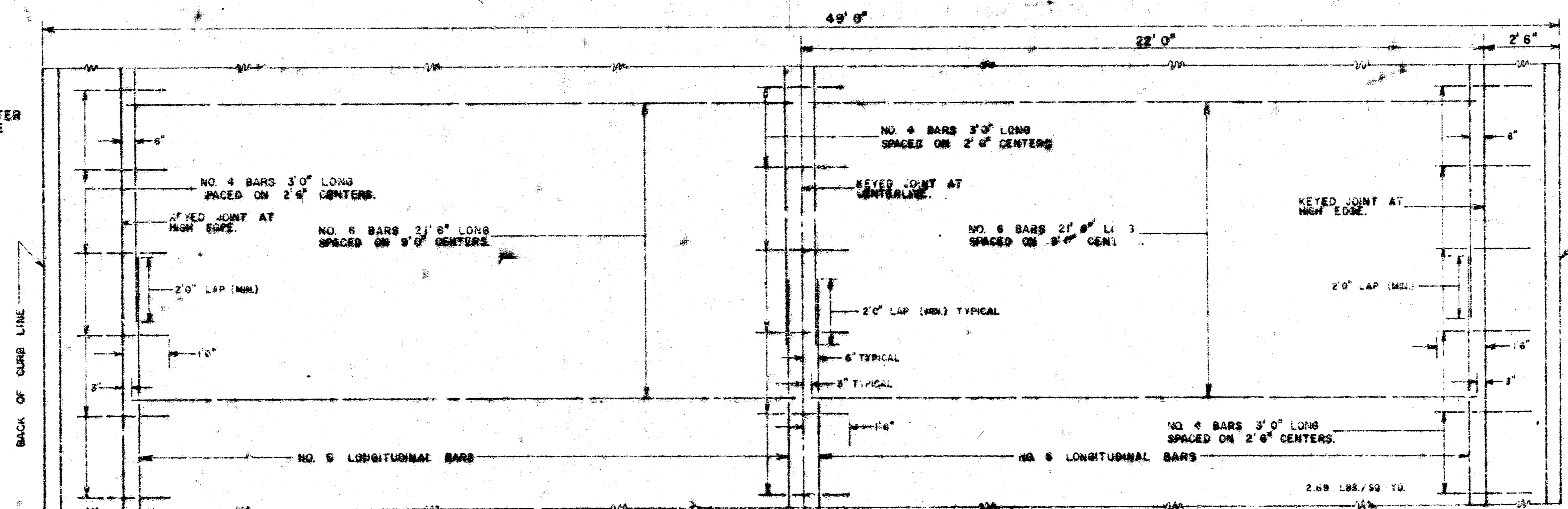
DEC. 1971

1/6

PROJ. NO. DAKM57018
 CITY OF WICHITA, KANSAS
 R. W. LINN, CITY ENGINEER



GENERAL NOTES
 CONTRACTION JOINTS MAY BE CONSTRUCTED IN COMBINED CURB AND GUTTER BY SAWING WITH AN APPROVED CONCRETE SAW. THE SAW CUT SHALL EXTEND 2-1/2" BELOW THE SURFACE OF THE GUTTER AND CURB. SAWED CONTRACTION JOINTS SHALL HAVE A MAXIMUM SPACING OF 10' AND BE FILLED WITH A SPECIFIED JOINT FILLER, SUCH THAT THE JOINT IN THE GUTTER SECTION WILL BE COMPLETELY FILLED.
 PAVEMENT GRADES SHOWN ON PLANS ARE FOR STANDARD CROWN.

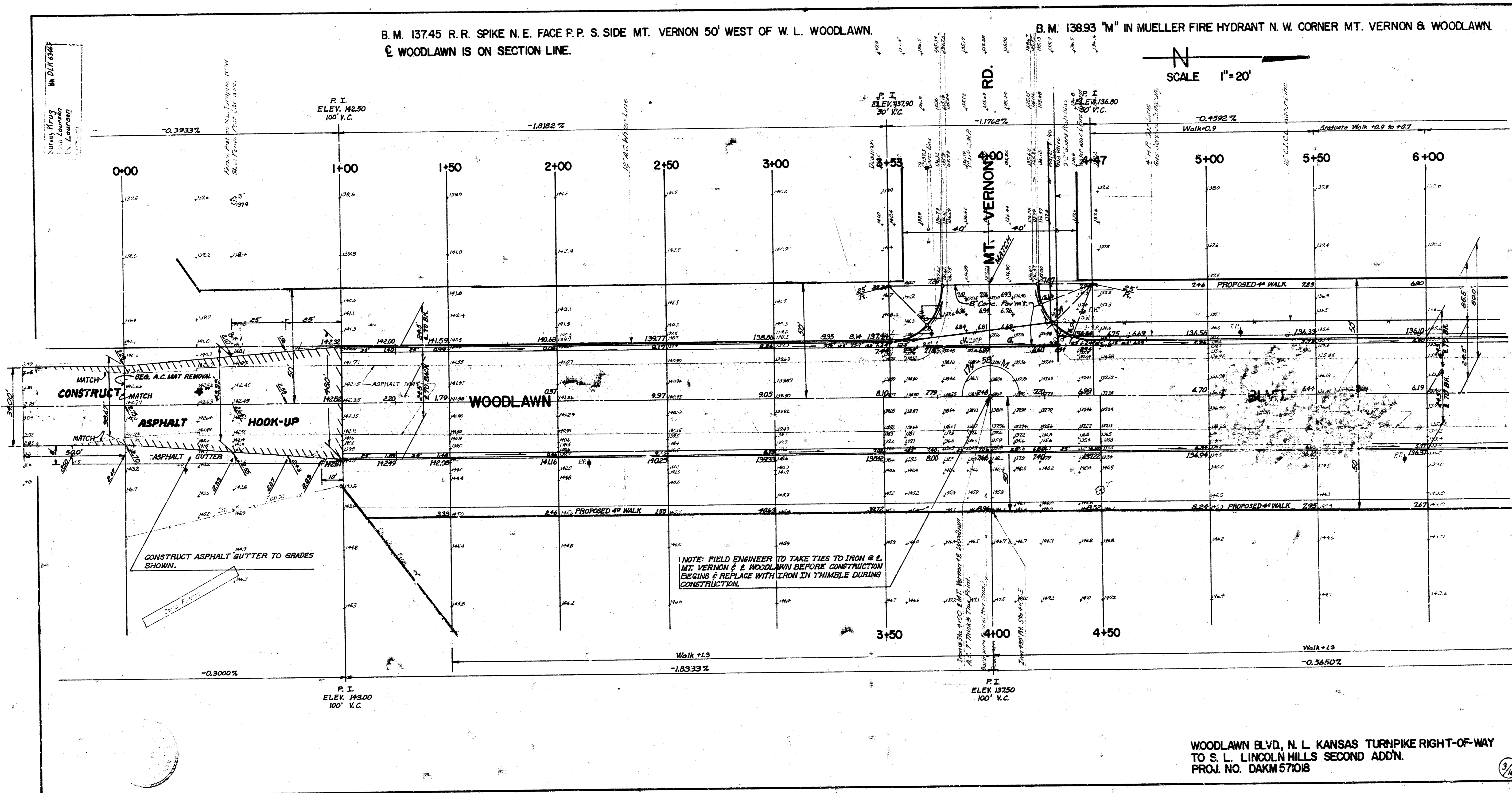


TYPICAL STEEL PATTERN
 48' 0" ASPHALTIC CONCRETE PAVEMENT

B. M. 137.45 R. R. SPIKE N. E. FACE P. P. S. SIDE MT. VERNON 50' WEST OF W. L. WOODLAWN.
E WOODLAWN IS ON SECTION LINE.

B. M. 138.93 "M" IN MUELLER FIRE HYDRANT N. W. CORNER MT. VERNON & WOODLAWN.

N
SCALE 1" = 20'

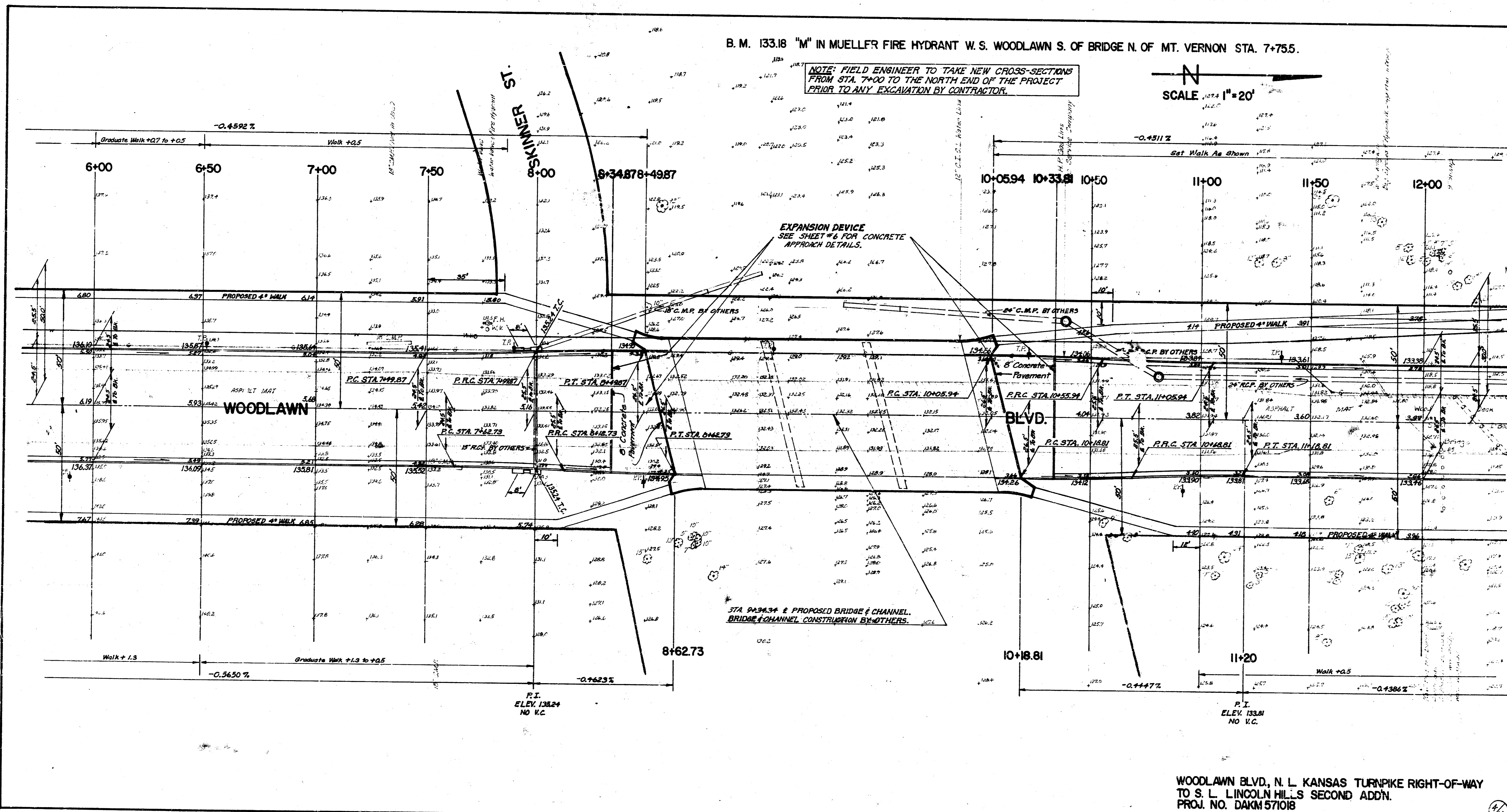
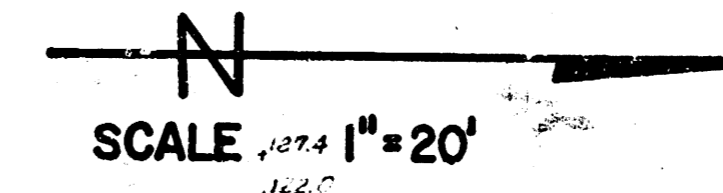


WOODLAWN BLVD, N. L. KANSAS TURNPIKE RIGHT-OF-WAY
TO S. L. LINCOLN HILLS SECOND ADDN.
PROJ. NO. DAKM 571018

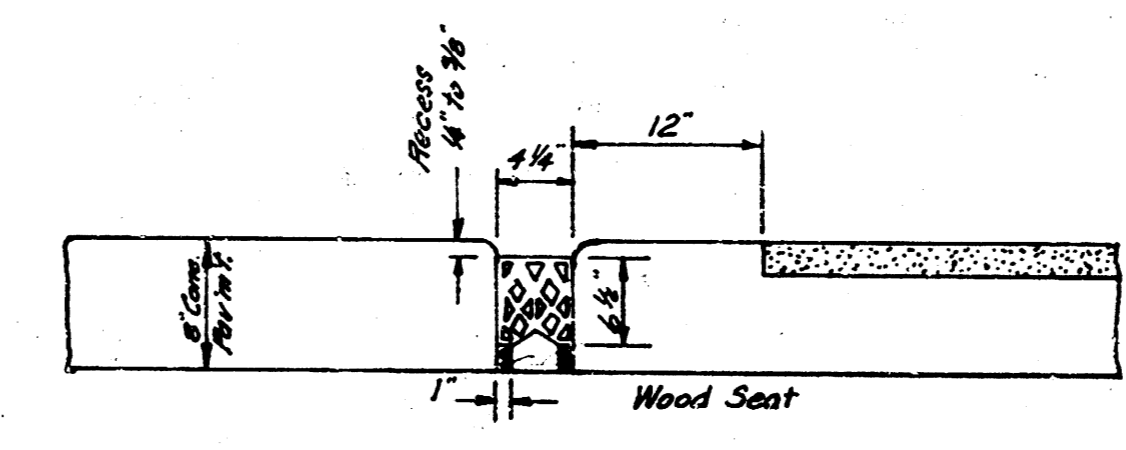
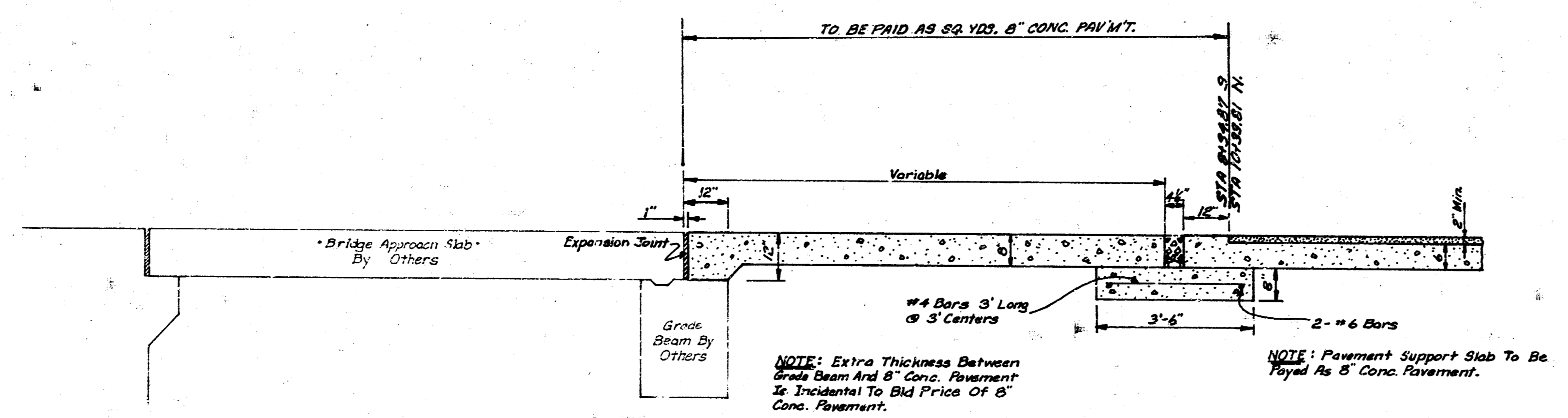
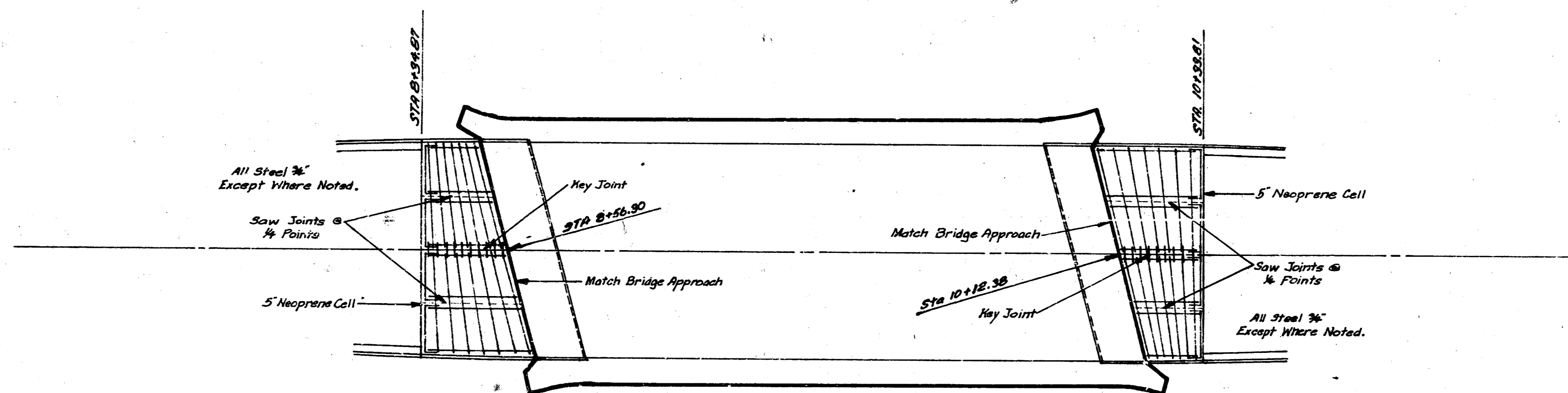
3/6

B. M. 133.18 "M" IN MUELLER FIRE HYDRANT W. S. WOODLAWN S. OF BRIDGE N. OF MT. VERNON STA. 7+75.5.

NOTE: FIELD ENGINEER TO TAKE NEW CROSS-SECTIONS FROM STA. 7+00 TO THE NORTH END OF THE PROJECT PRIOR TO ANY EXCAVATION BY CONTRACTOR.



WOODLAWN BLVD., N. L. KANSAS TURNPIKE RIGHT-OF-WAY TO S. L. LINCOLN HILLS SECOND ADDN. PROJ. NO. DAKM 571018



Install 5" Wide Preformed Open Cell Neoprene Joint Seal. Use "H" Series Elastic Bridge Seal Catalog No. H-5000, D.S. Brown Co. Or An Approved Equal.

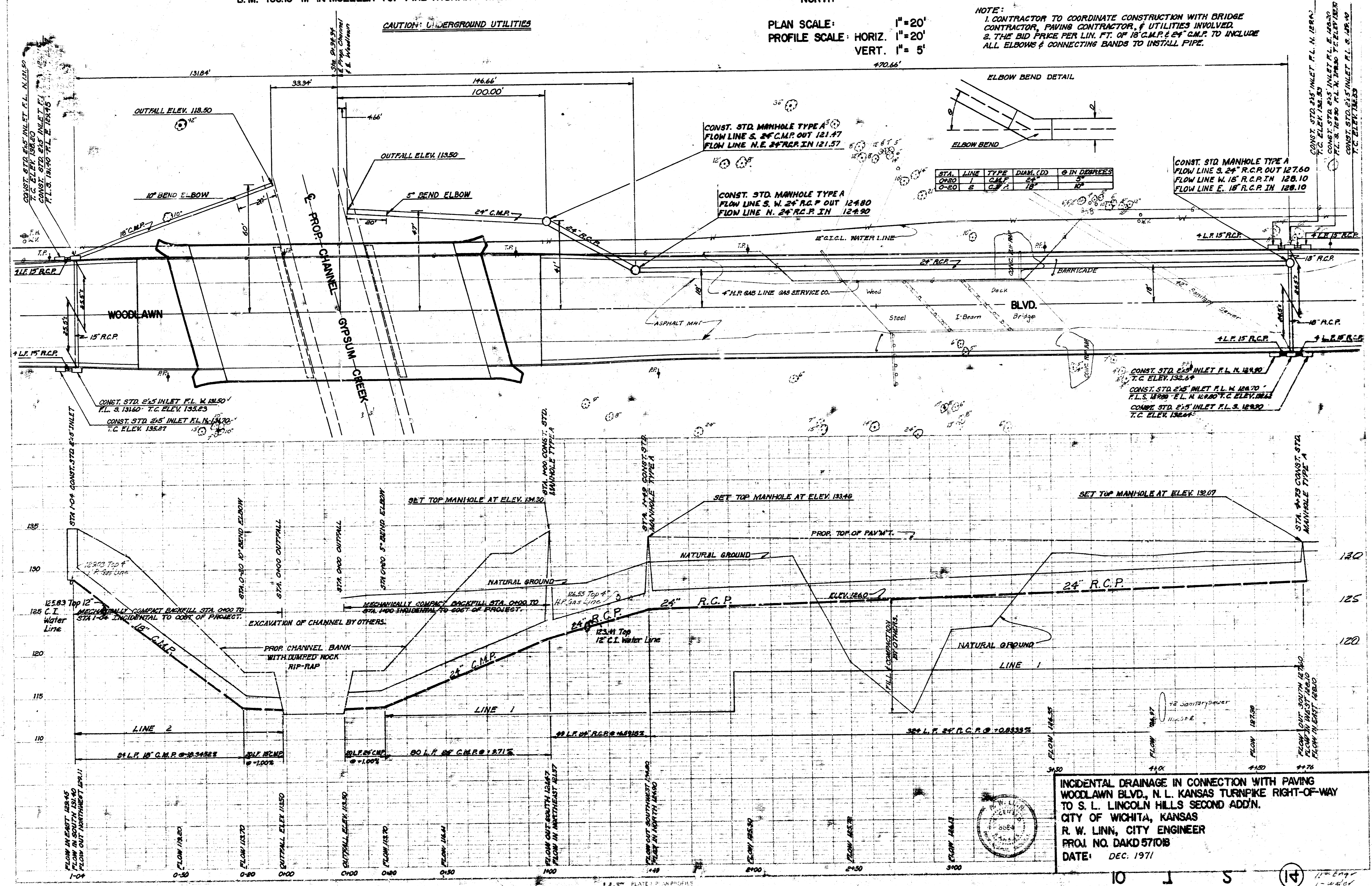
The Neoprene Joint Material Shall Be Machine Installed With Equipment Capable Of Placing The Stripe At The Specified Depth Without Increasing Or Decreasing The Length As Taken From The Roll Or Box By More Than 5%. No Splices Will Be Permitted Across The Roadway. 6" Long Sections Are To Be Installed Vertical In The Curb Section Of The Roadway Pavement. The Seals Shall Be Secured In Place With An Approved Lubricant Release Which Shall Cover Both Sides Of The Seal Over The Full Contact Area. The Seals And Installation Shall Not Be Paid For Directly, But Shall Be Subsidiary To The Bid Item Of 8" Concrete Pavement.

B. M. 133.18 "M" IN MUELLER TOP FIRE HYDRANT W. S. WOODLAWN 375.5' N. OF E. MT. VERNON.

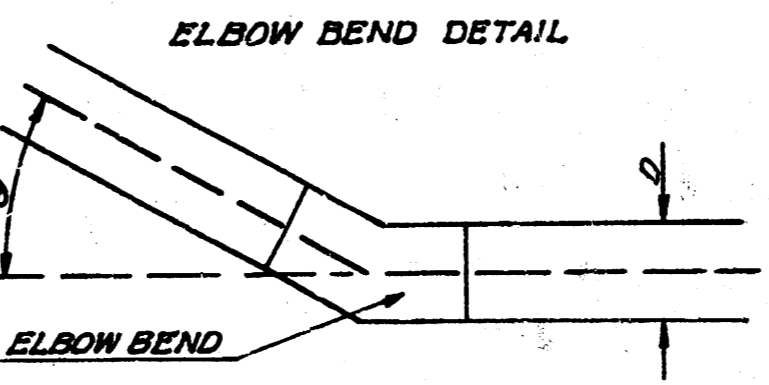
NORTH
 PLAN SCALE: 1"=20'
 PROFILE SCALE: HORIZ. 1"=20'
 VERT. 1"=5'

NOTE:
 1. CONTRACTOR TO COORDINATE CONSTRUCTION WITH BRIDGE CONTRACTOR, PAVING CONTRACTOR, & UTILITIES INVOLVED.
 2. THE BID PRICE PER LIN. FT. OF 18" C.M.P. & 24" C.M.P. TO INCLUDE ALL ELBOWS & CONNECTING BANDS TO INSTALL PIPE.

CAUTION: UNDERGROUND UTILITIES



STA.	LINE	TYPE	DIAM. (D)	θ IN DEGREES
0+00	2	C.M.P.	18"	5°
0+20	2	C.M.P.	18"	10°



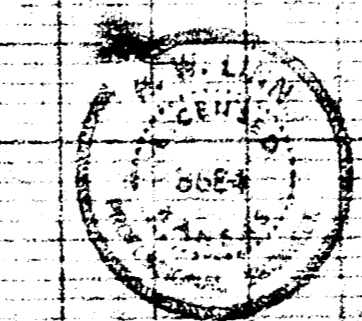
CONST. STD. MANHOLE TYPE A
 FLOW LINE S. 24" R.C.P. OUT 121.47
 FLOW LINE N.E. 24" R.C.P. IN 121.57

CONST. STD. MANHOLE TYPE A
 FLOW LINE S. W. 24" R.C.P. OUT 124.80
 FLOW LINE N. 24" R.C.P. IN 124.90

CONST. STD. MANHOLE TYPE A
 FLOW LINE S. 24" R.C.P. OUT 127.60
 FLOW LINE W. 18" R.C.P. IN 128.10
 FLOW LINE E. 18" R.C.P. IN 128.10

CONST. STD. 24" INLET P.L. N. 124.70
 T.C. ELEV. 132.24
 CONST. STD. 24" INLET P.L. W. 124.70
 P.L.S. 124.95 P.L. N. 124.70 T.C. ELEV. 132.24
 CONST. STD. 24" INLET P.L. S. 124.90
 T.C. ELEV. 132.64

INCIDENTAL DRAINAGE IN CONNECTION WITH PAVING WOODLAWN BLVD., N. L. KANSAS TURNPIKE RIGHT-OF-WAY TO S. L. LINCOLN HILLS SECOND ADDN.
 CITY OF WICHITA, KANSAS
 R. W. LINN, CITY ENGINEER
 PROJ. NO. DAKD 5710B
 DATE: DEC. 1971



Survey Maps
 Pipe Layout
 Dec. 1971

FILE