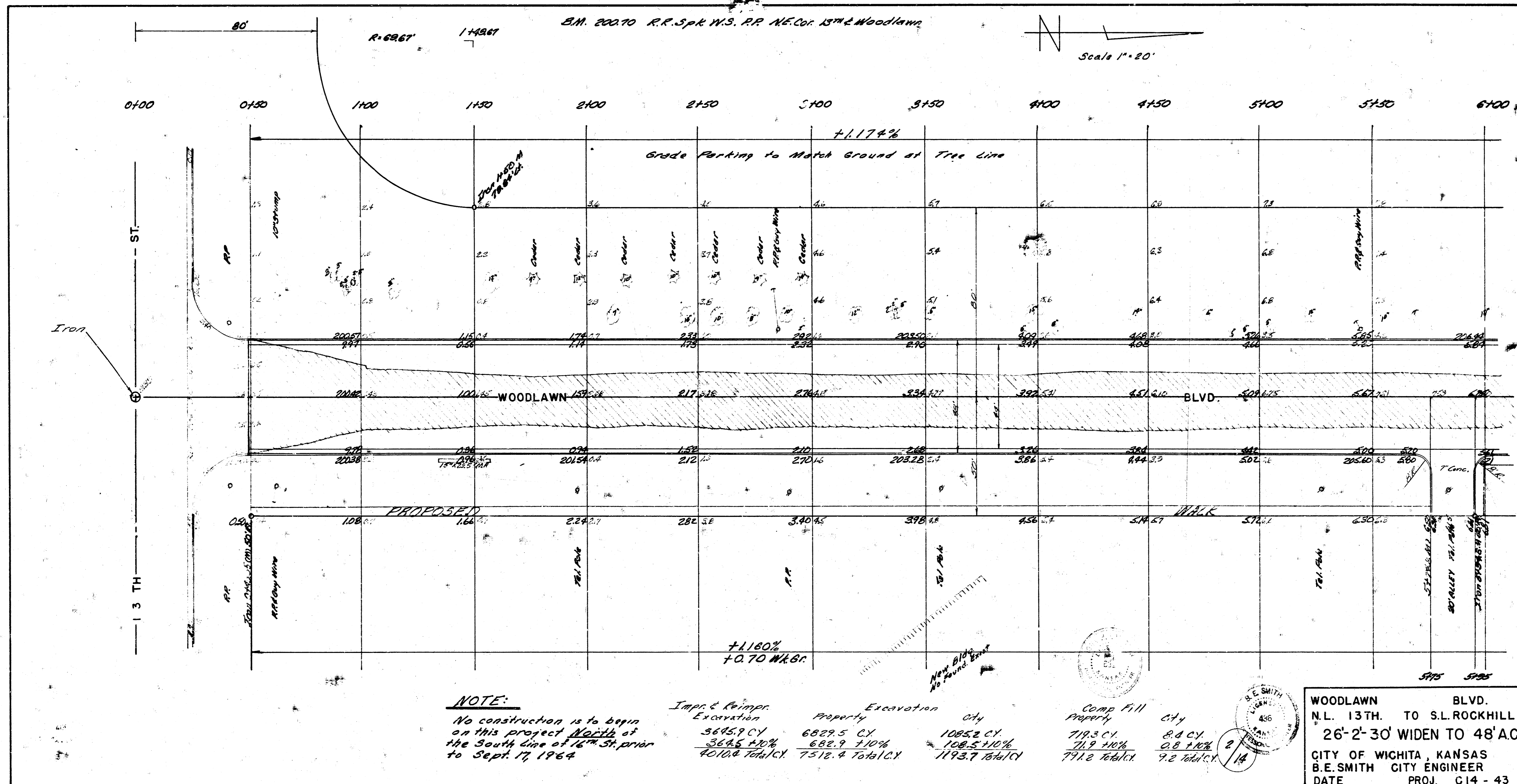


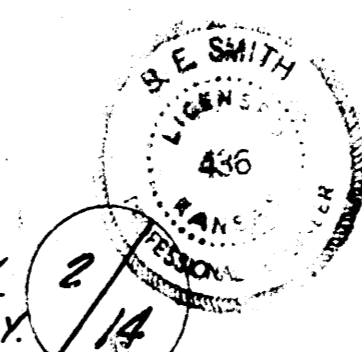
WOODLAWN BLVD
N. L. 13TH. TO S. L. ROCKHILL LANE
PROJECT C 14 - 43



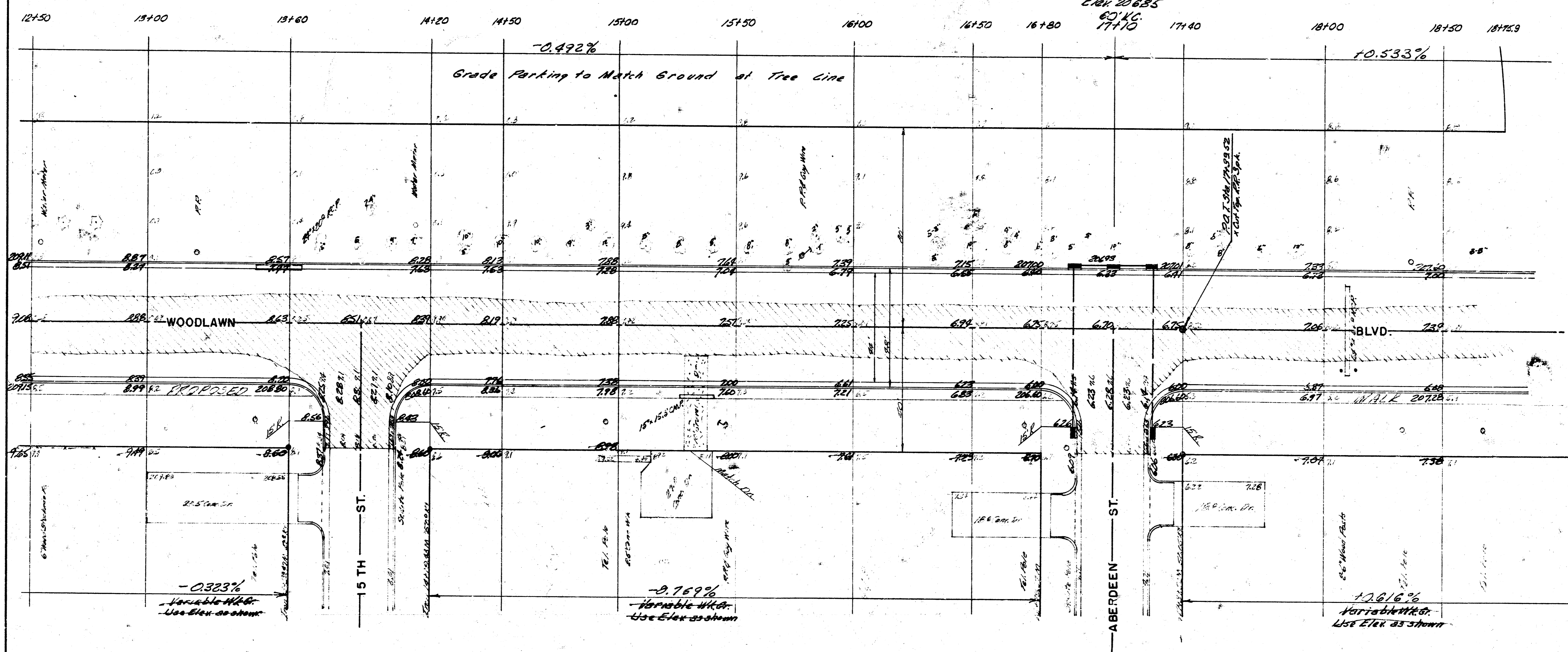
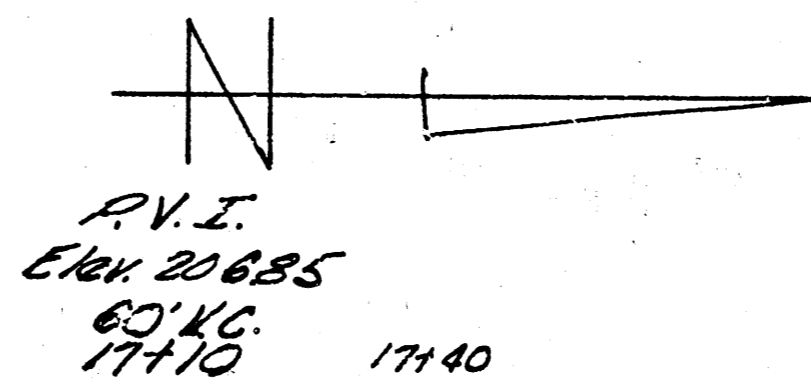
NOTE:

No construction is to begin on this project North of the South line of 16th St. prior to Sept. 17, 1964

Imp't & Reimpr. Excavation	Property Excavation	City Excavation	Comp. Fill Property	City
3645.9 CY	6827.5 CY	1085.2 CY	719.3 CY	8.4 CY
56% ± 10%	682.9 ± 10%	108.5 ± 10%	71.2 ± 10%	0.8 ± 10%
4016.8 Total CY	7512.4 Total CY	1193.7 Total CY	791.2 Total CY	9.2 Total CY



R.M. 208.35 R.R. Sp. N.S. St. Light Pole NE Cor. 15th Woodlawn

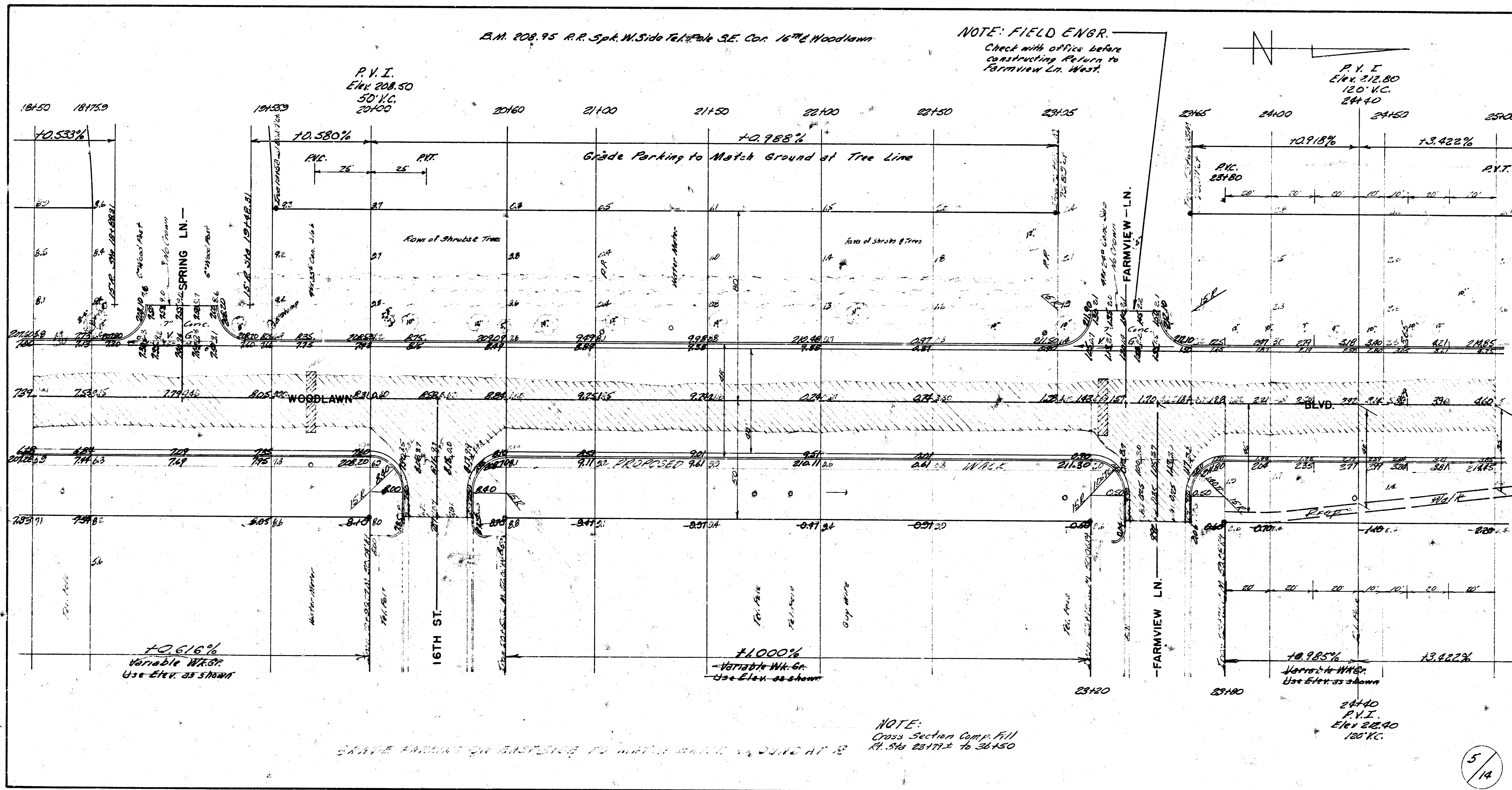


NOTE:
Drainage by Others

GRADE PARTING IN EAST SIDE TO MATCH EXIST. GROUND AT 15

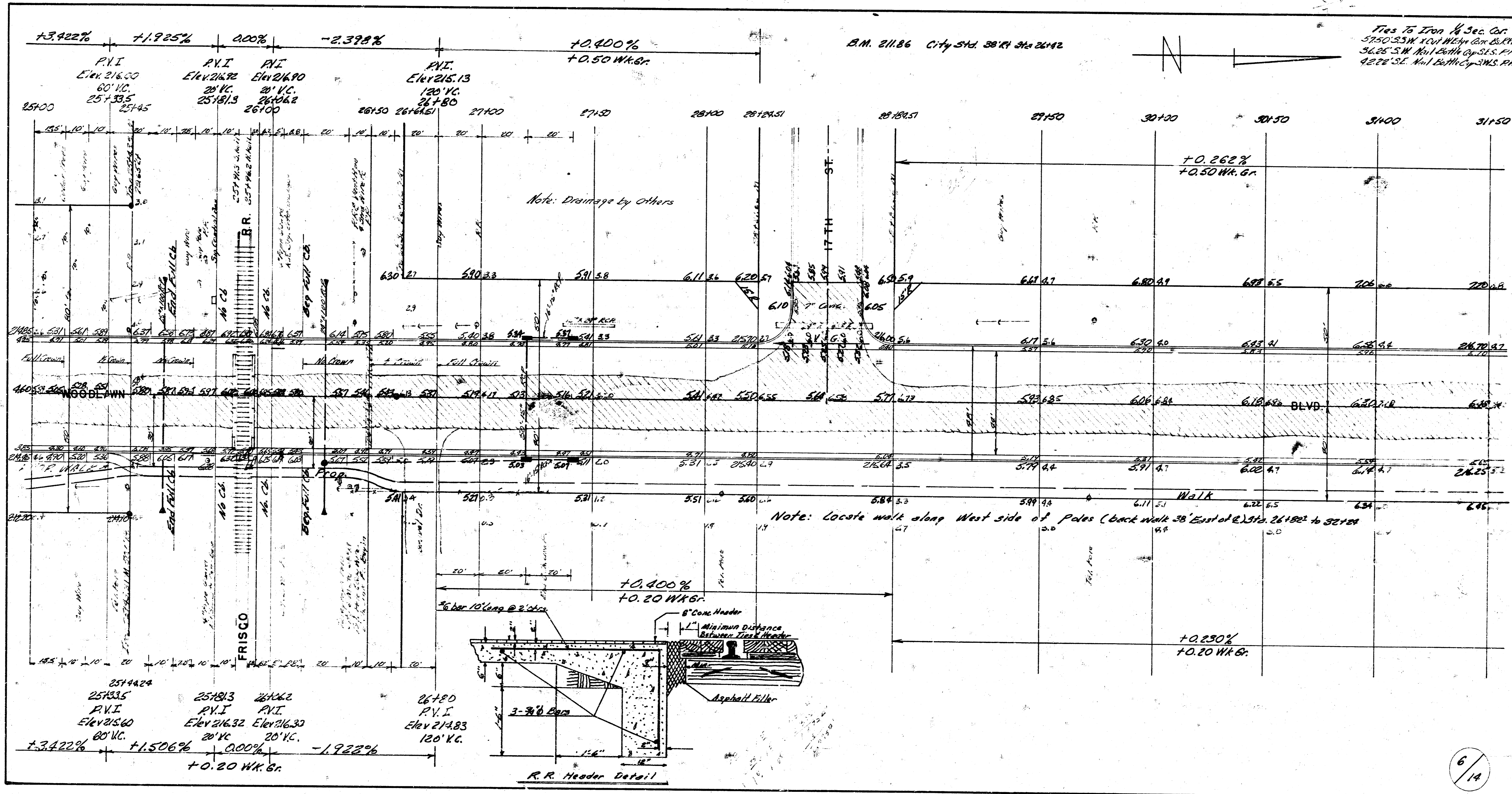
A.M. 208.95 R.R. Sp. N. Side Fairview SE. Cor. 16th Woodlawn

NOTE: FIELD ENGR.
Check with office before
constructing Return to
Farmview Ln. West.

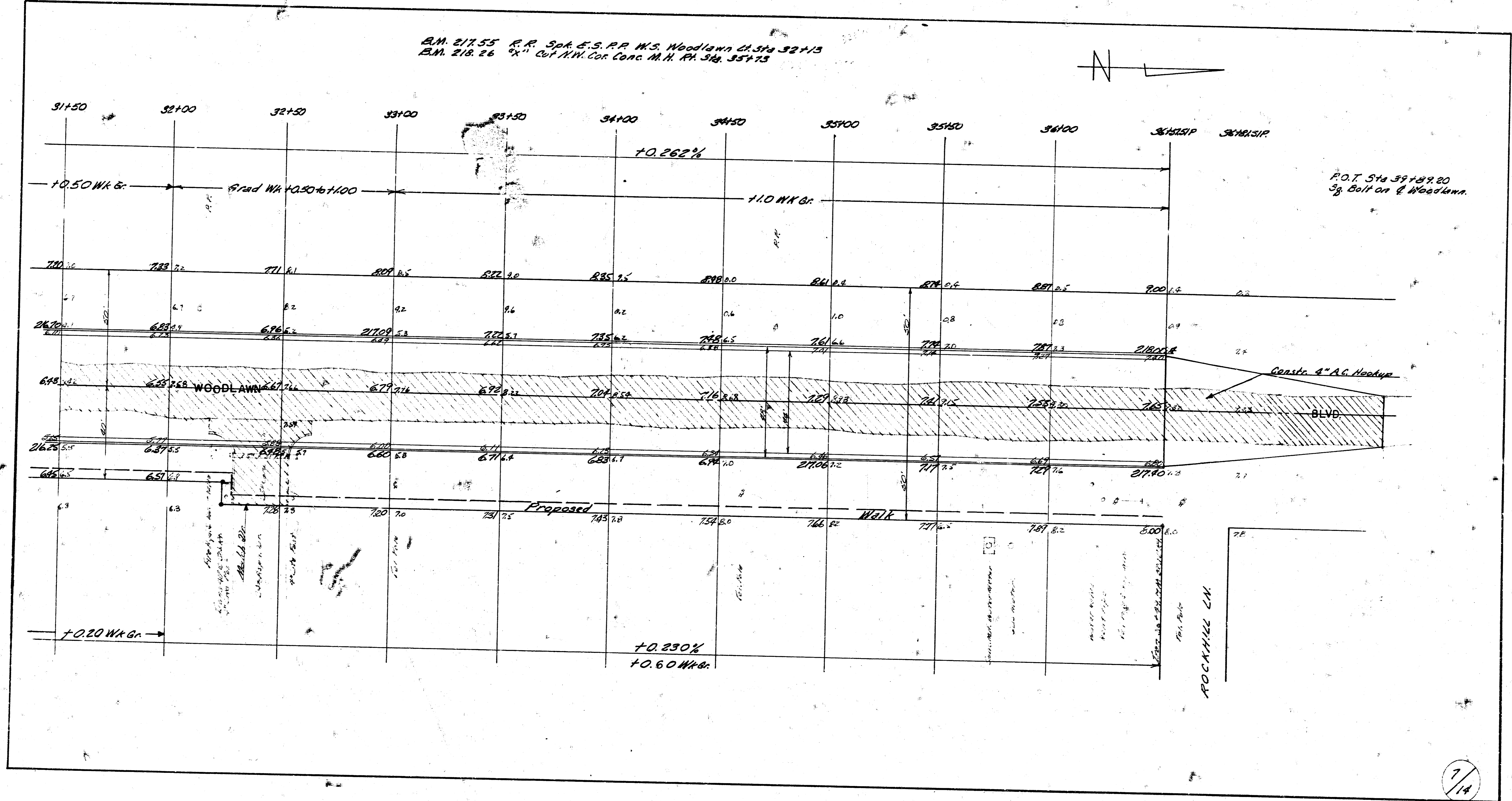
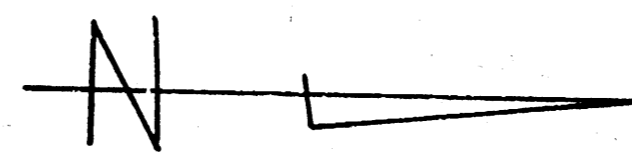


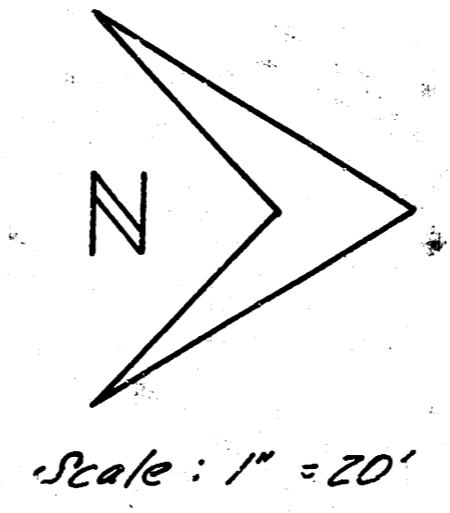
SKINNE PARALLEL ON EAST SIDE TO MATCH GROUND AT JUNCTION

NOTE:
Cross Section Comp. Fill
At Sta 23175 to 23450

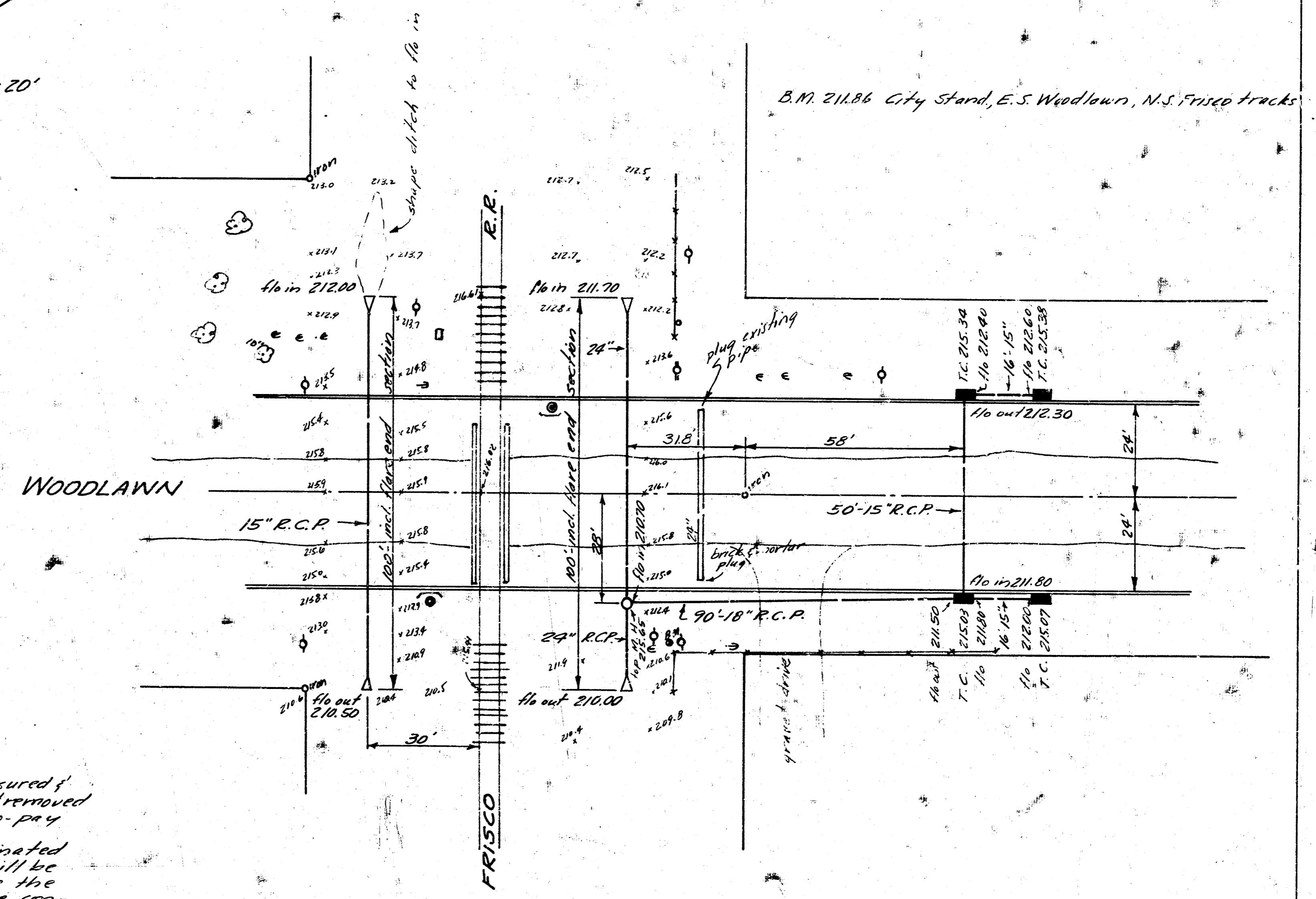
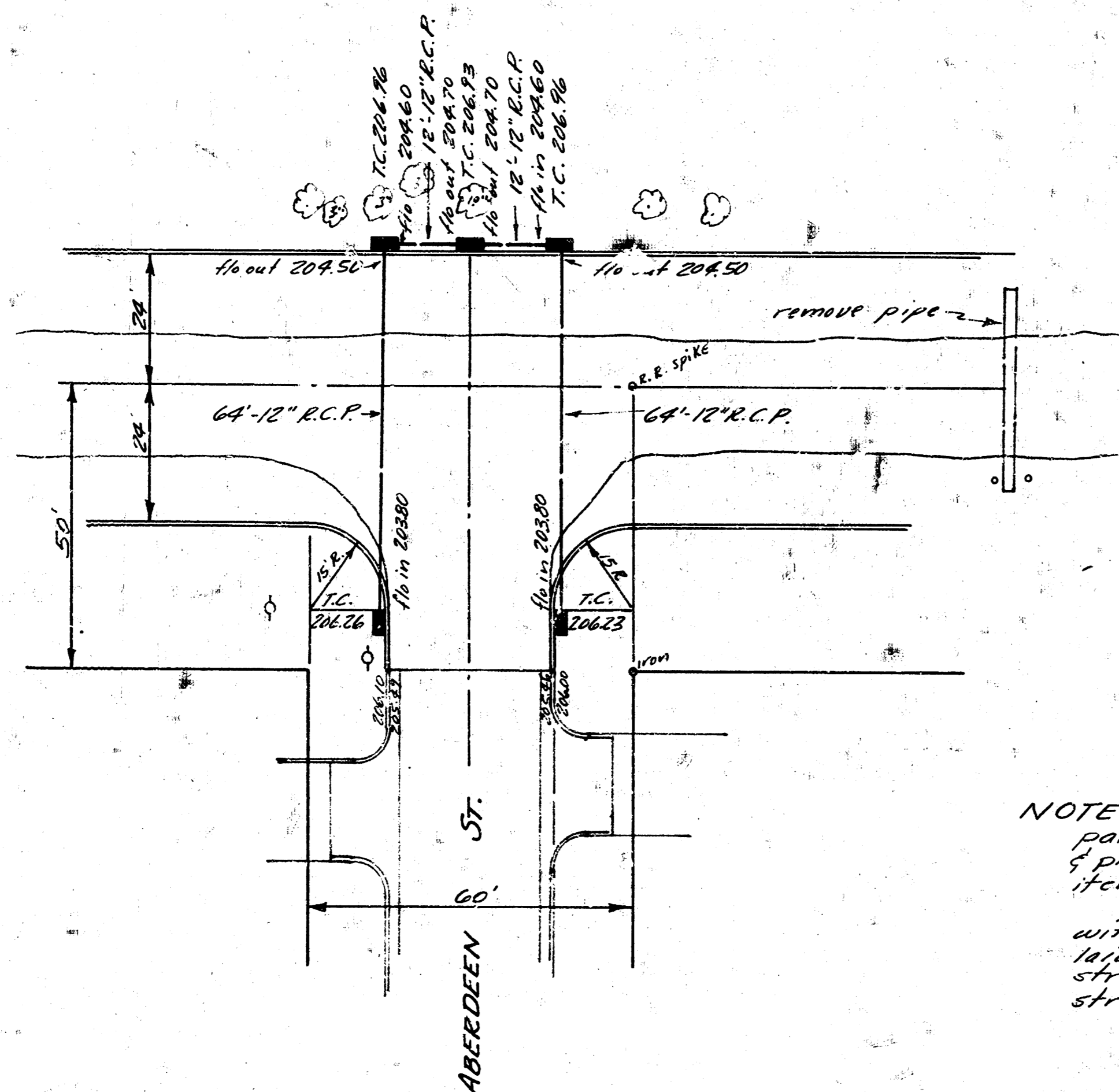


B.M. 217.55 R.R. Spk. E.S. P.P. W.S. Woodlawn Ch. Sta 32+13
 B.M. 218.26 "x" Cut N.W. Cor. Conc. M.H. Sta. 35+73



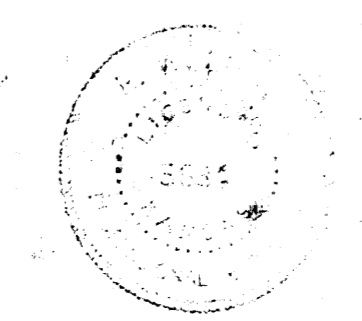
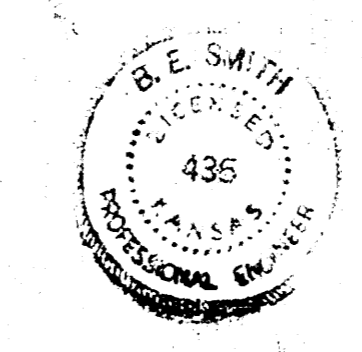


B.M. 208.35 R.R. spike, N.S. life pole, N.E. Cor. Woodlawn & 15th St.



NOTE: Flare end sections will be measured & paid as lin. ft. of R.C.P. Asph. mat. removed & plugging of existing pipe are no-pay items incidental to the project.
Construction must be coordinated with paving construction. Pipes will be laid after paving. Contractor closes the street to traffic. Inlets are to be constructed after paving.

Gandy's



INCIDENTAL DRAINAGE
WOODLAWN BLVD.
N.L. 13th ST. TO S.L. ROCKHILL
CITY OF WICHITA, KANSAS
B.E. SMITH - CITY ENGINEER
1964 PROJ. CIA-43