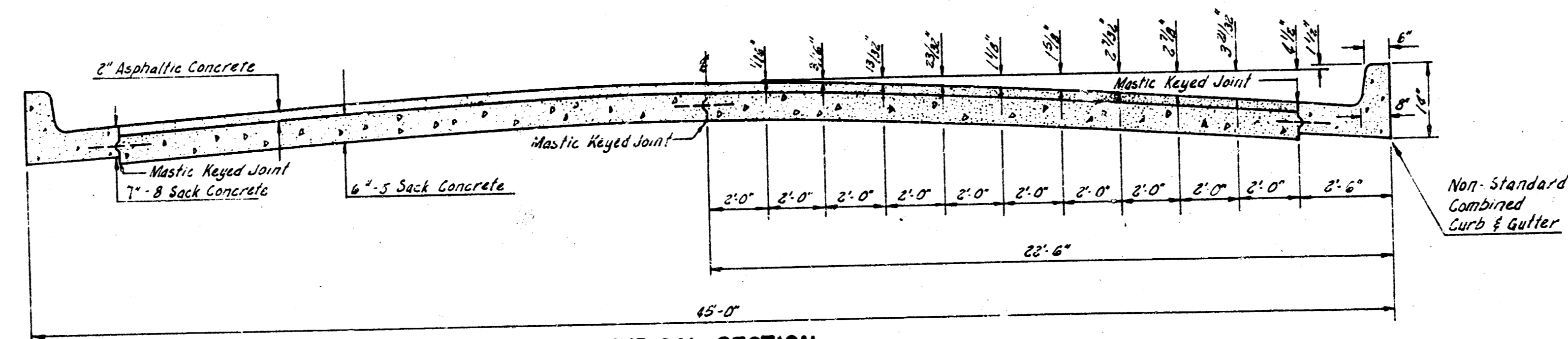
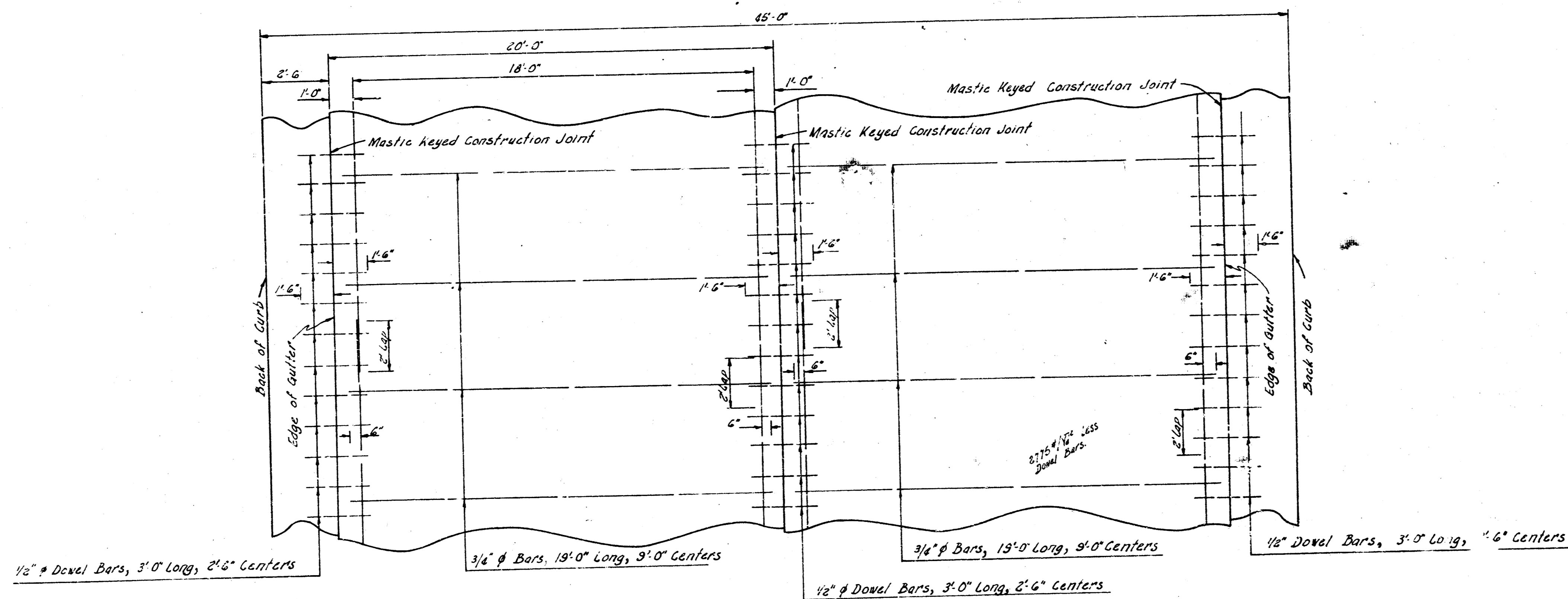


EAST 1/2 WOODLAWN  
 N.L. MAGILL TO SL.10TH  
 C18-16



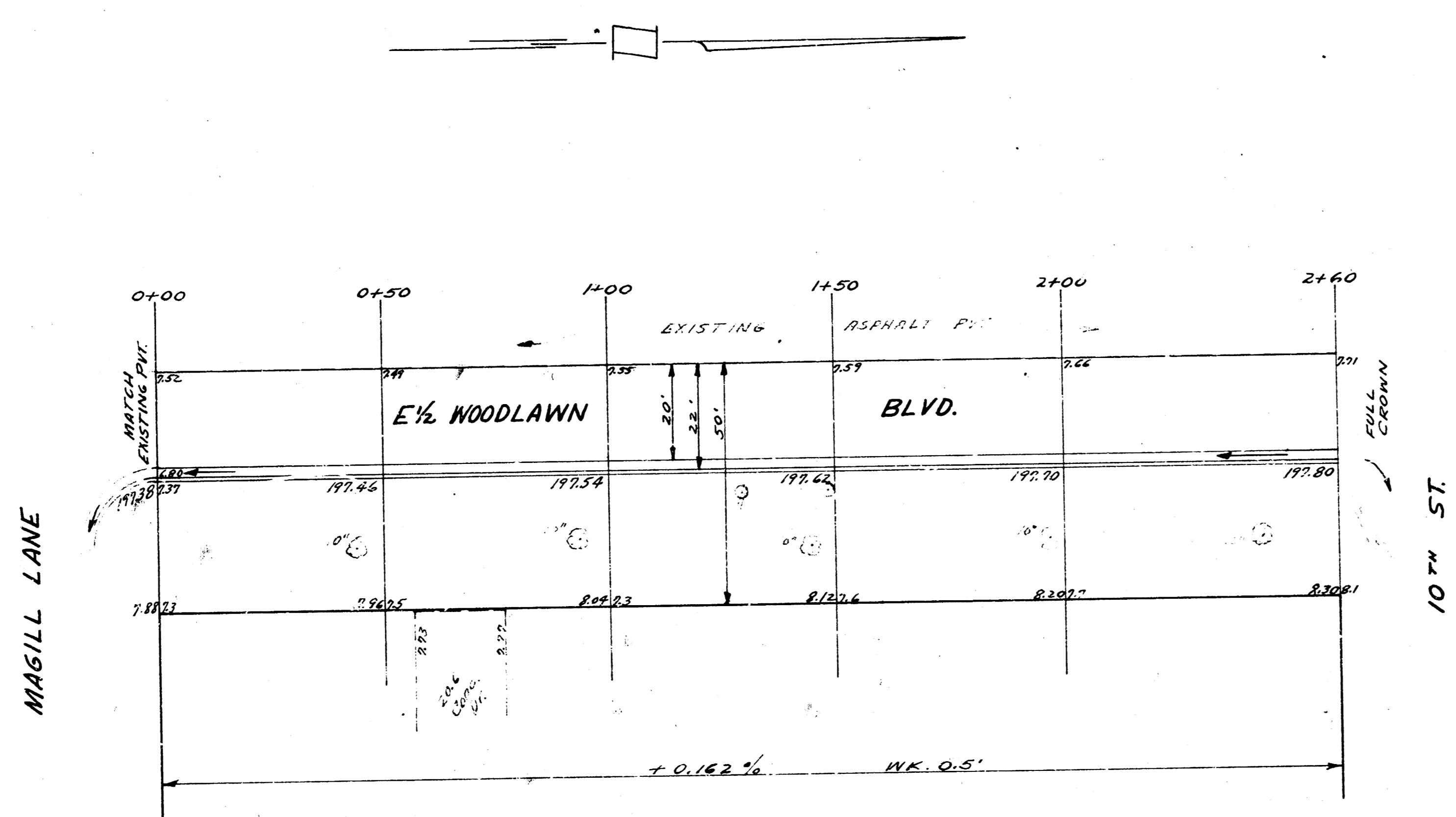
TYPICAL SECTION  
 NOT TO SCALE



STEEL PATTERN  
 NOT TO SCALE  
 USE 3/4" Ø BARS EXCEPT WHERE NOTED

1/3

B.M. 197.79 "R" IN RITCHIE N.L. PATRICIA (WEST CURB WOODLAWN)  
 STATIONING & BASE LINE ON "E" WOODLAWN.



E 1/2 WOODLAWN  
 N.L. MAGILL TO S.L. 10<sup>TH</sup>  
 13-2-15-AC WIDEN TO 20-2-22 AC.  
 CITY OF WICHITA KAN.  
 BE SMITH CITY ENGINEER  
 SEPT. 1935 PROJ. NO. C18-16

