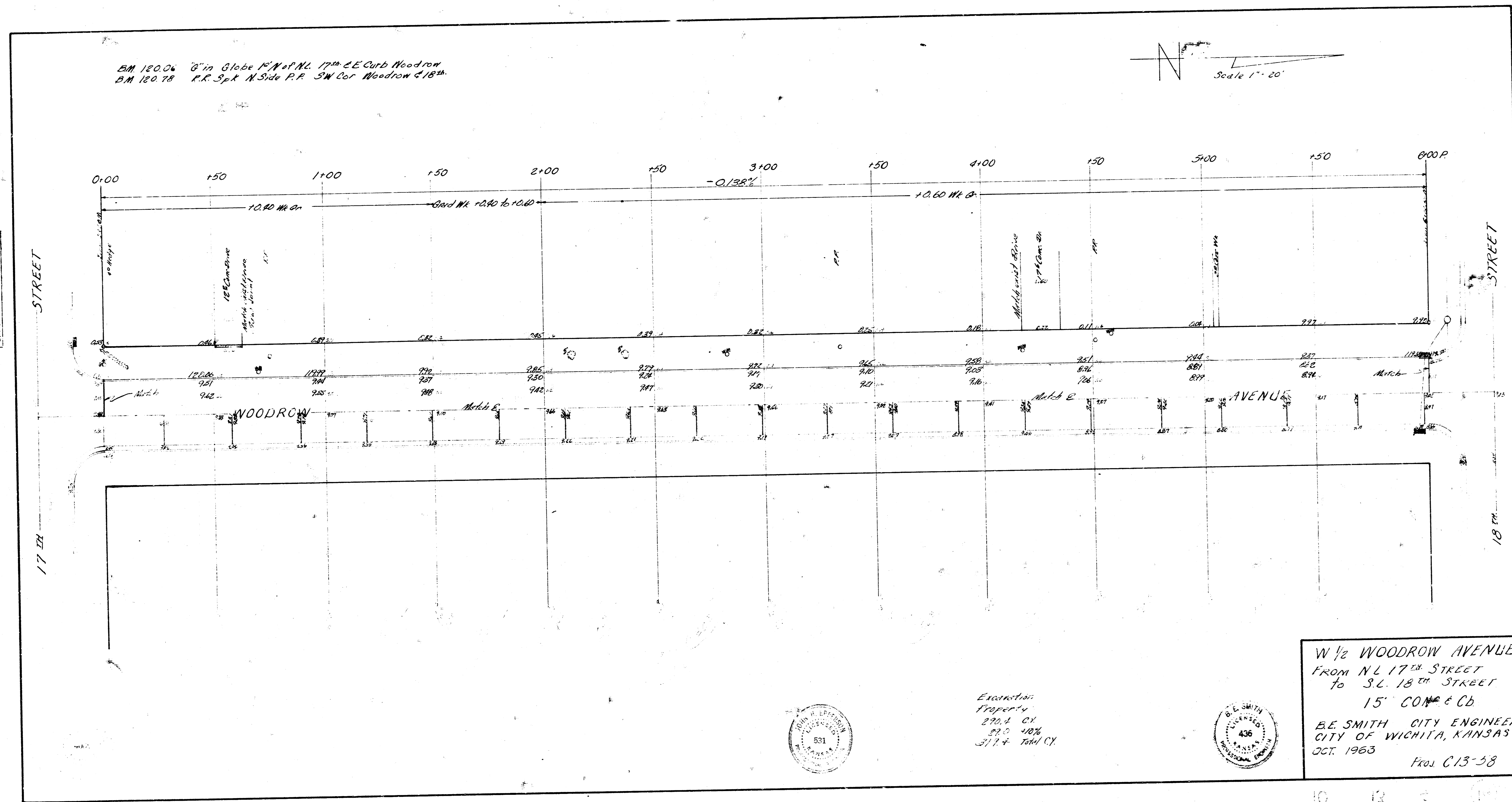
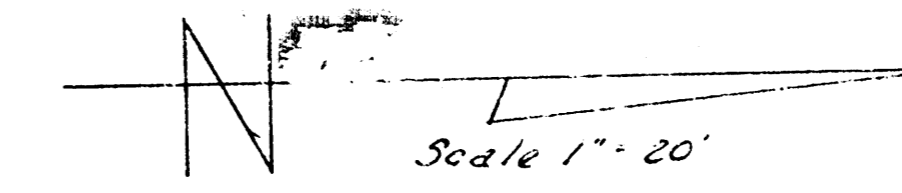


BM 120.06 6" in Globe Ist N of N. 17th E Curb Woodrow
 BM 120.78 R.R. Sp. R. N. Side P.R. SW Cor. Woodrow & 18th



Survey - J.A.K.
 Plot - D.A.S.
 Est. - W.S.P.
 Checked

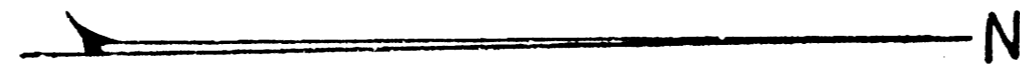
W 1/2 WOODROW AVENUE
 FROM N. L. 17th STREET
 TO S. L. 18th STREET
 15' COR. & CB
 E.E. SMITH CITY ENGINEER
 CITY OF WICHITA, KANSAS
 OCT. 1963
 Proj. C13-58



Excavation
 Property
 270.4 CY
 22.0 10%
 217.4 Total CY

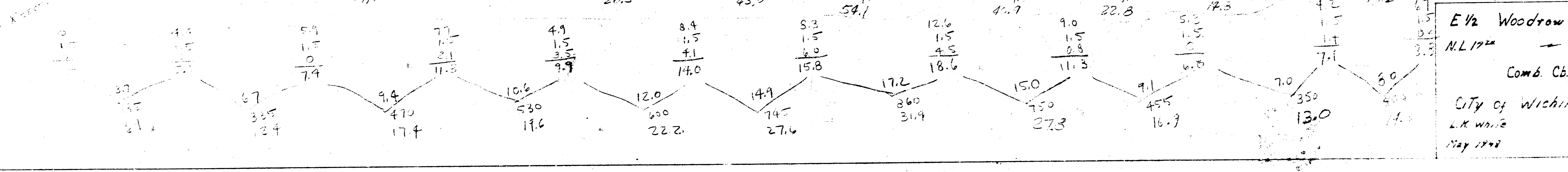
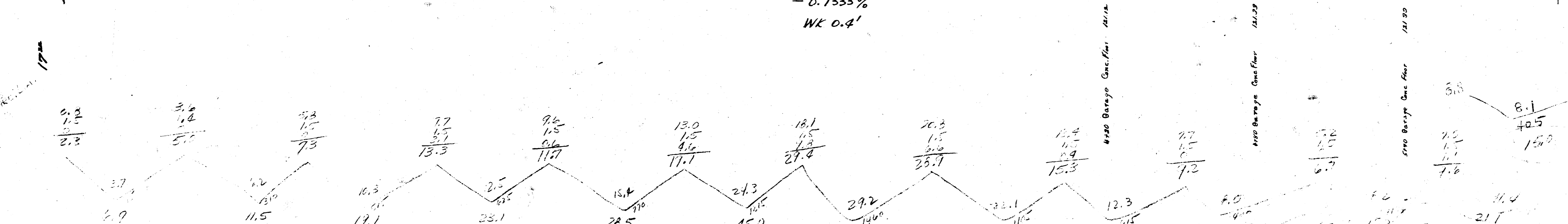
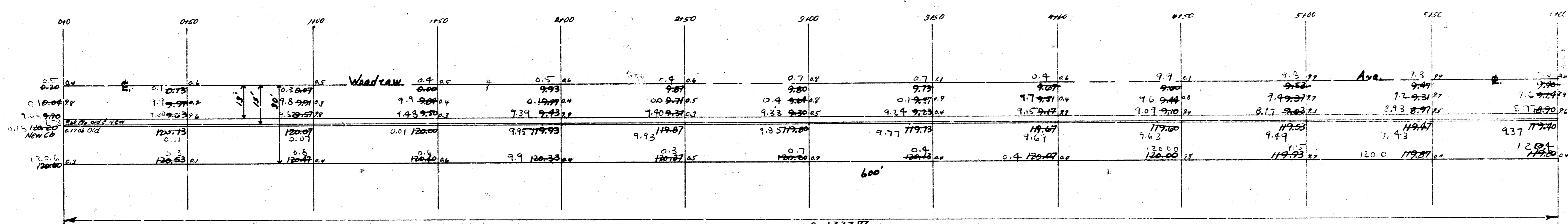


B.M. 122.33 R.A. SPIKE IN SS. P. 16 E.S. Woodrow - S.S. 18"



57

57



E 1/2 Woodrow Ave.
 N.L. 17" - S.L. 18"
 Comb. Cb. - 37"
 City of Wichita, Kansas
 L.K. White City Engineer
 May 1942 Project C-1-72

