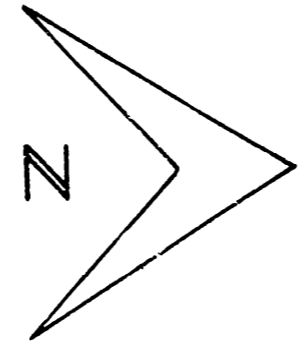


B.M. 205.08 NW Cor. Cove Base 4 University Methodist Mem., NE Cor. Yale & 21st St.
 B.M. 199.63 NW Cor. same park, Ht. # 2284 N. Yale
 B.M. 192.11 "N" in Weather Top Fire Hydr. W.S. Yale @ Sta. 7+80
 B.M. 191.92 "N" cor. same with W. Side Ht. # 2400 N. Yale

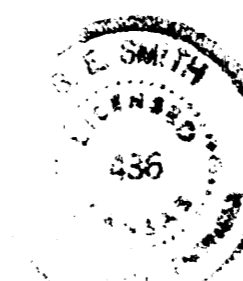
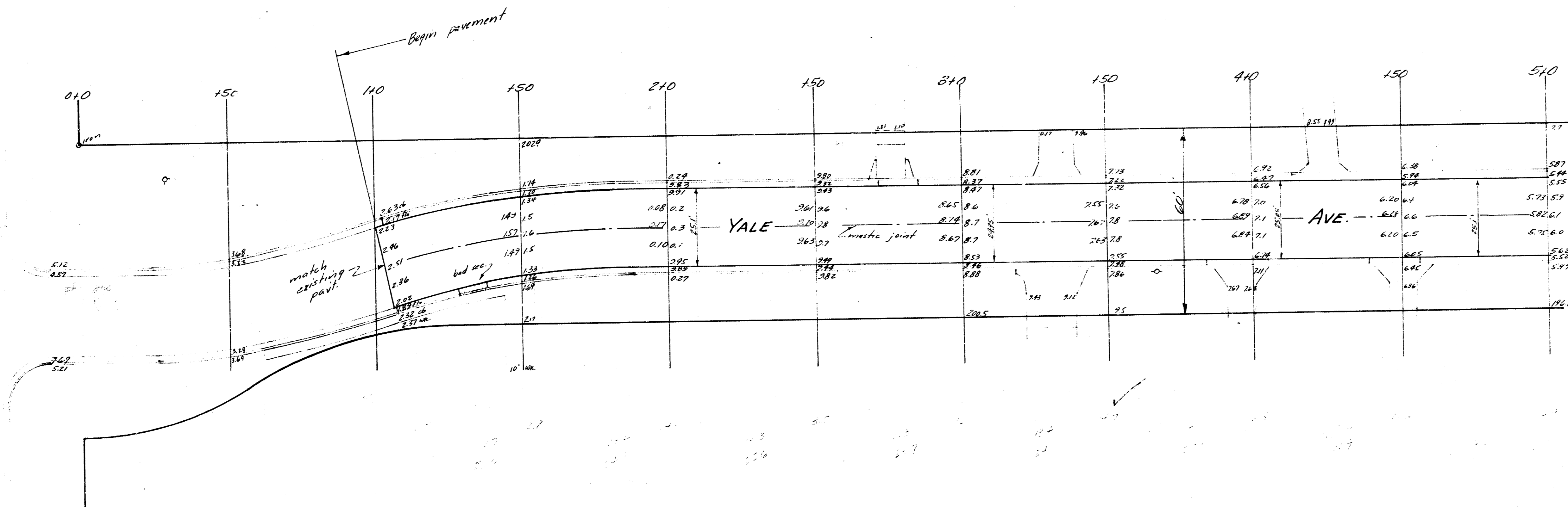
See field book J.F.G.-86 for drive details.



Scale: 1" = 20'

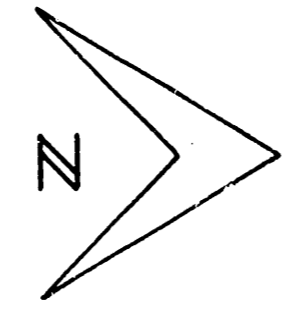
57'

21st

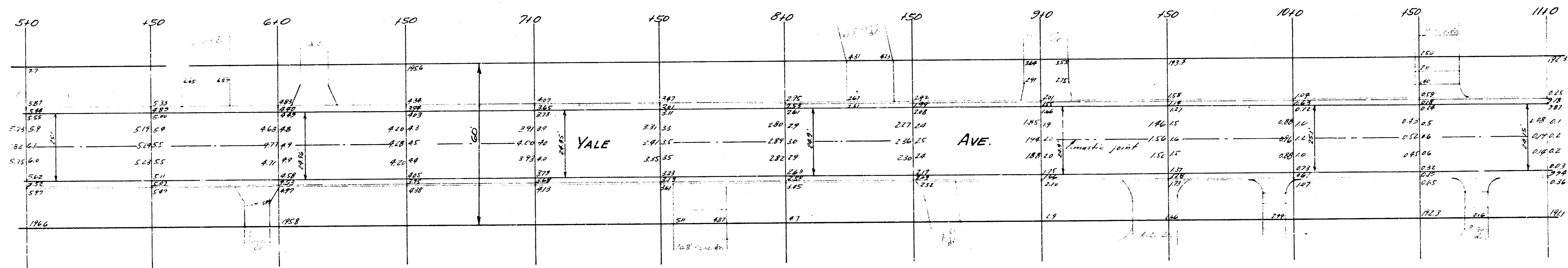


1/3

YALE AVE.
 95' N. of N.L. 21st St. to N.L. Lot 11,
 Block B, Mona-Lynn Estates.
 25' CONCRETE
 CITY OF WICHITA, KANSAS
 B.E. SMITH - CITY ENGINEER
 OCT., 1962 PROJ. C12-58



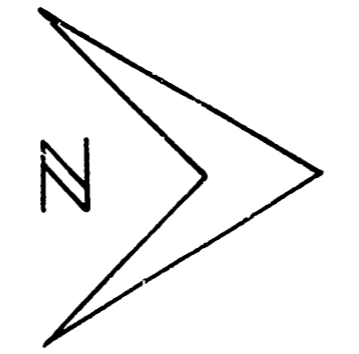
Scale: 1" = 20'



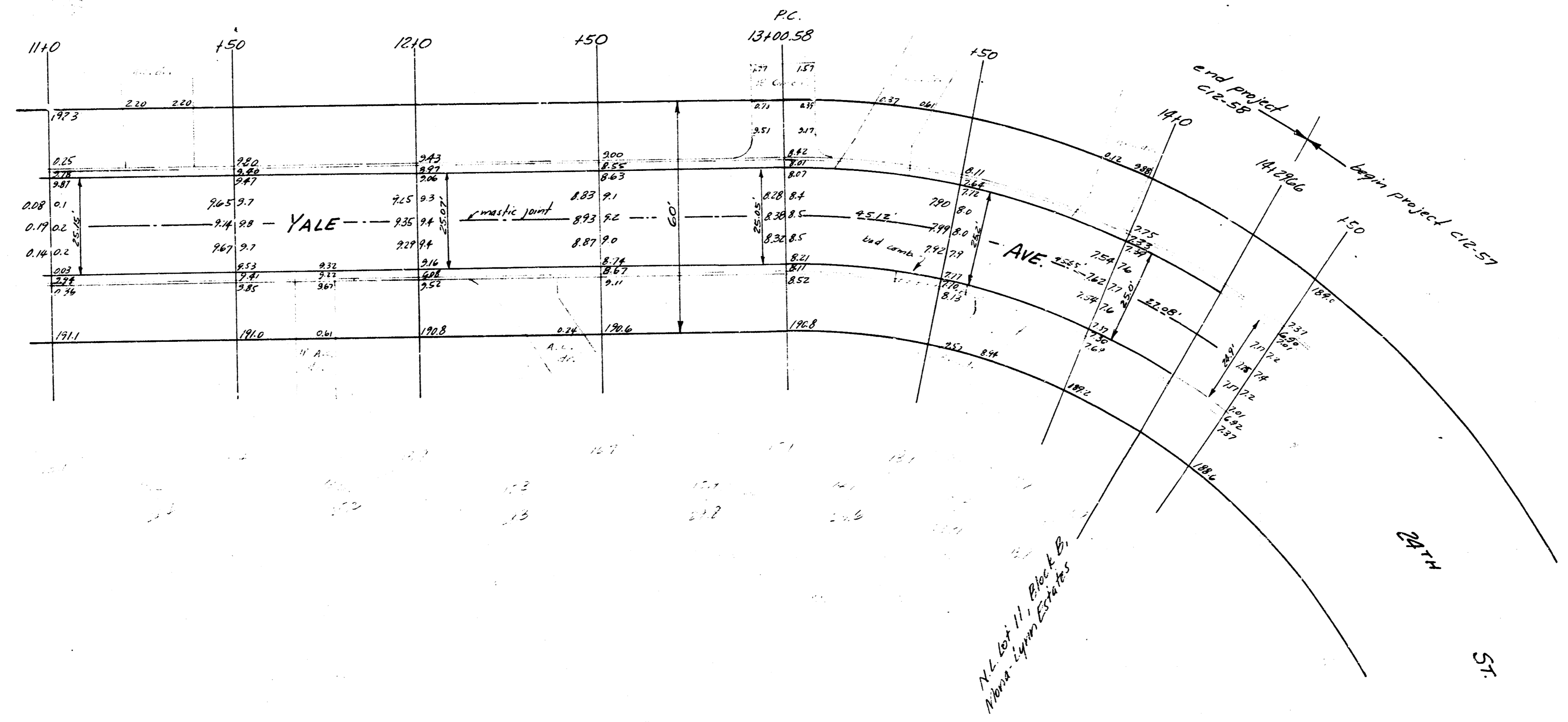
2/3

YALE AVE.
PROJ. C12-58

B.M. 19192 N.W. Cor. Conc. wk. W. side 16. # 2400 N. Yale
 B.M. 18710 "M" in Mueller Top fire Dept. N.W. cor. 37th & 1st



Scale: 1" = 20'
 Stationing: 10' east of W.P.L.



3/3

YALE AVE.
 PROJ. C12-58