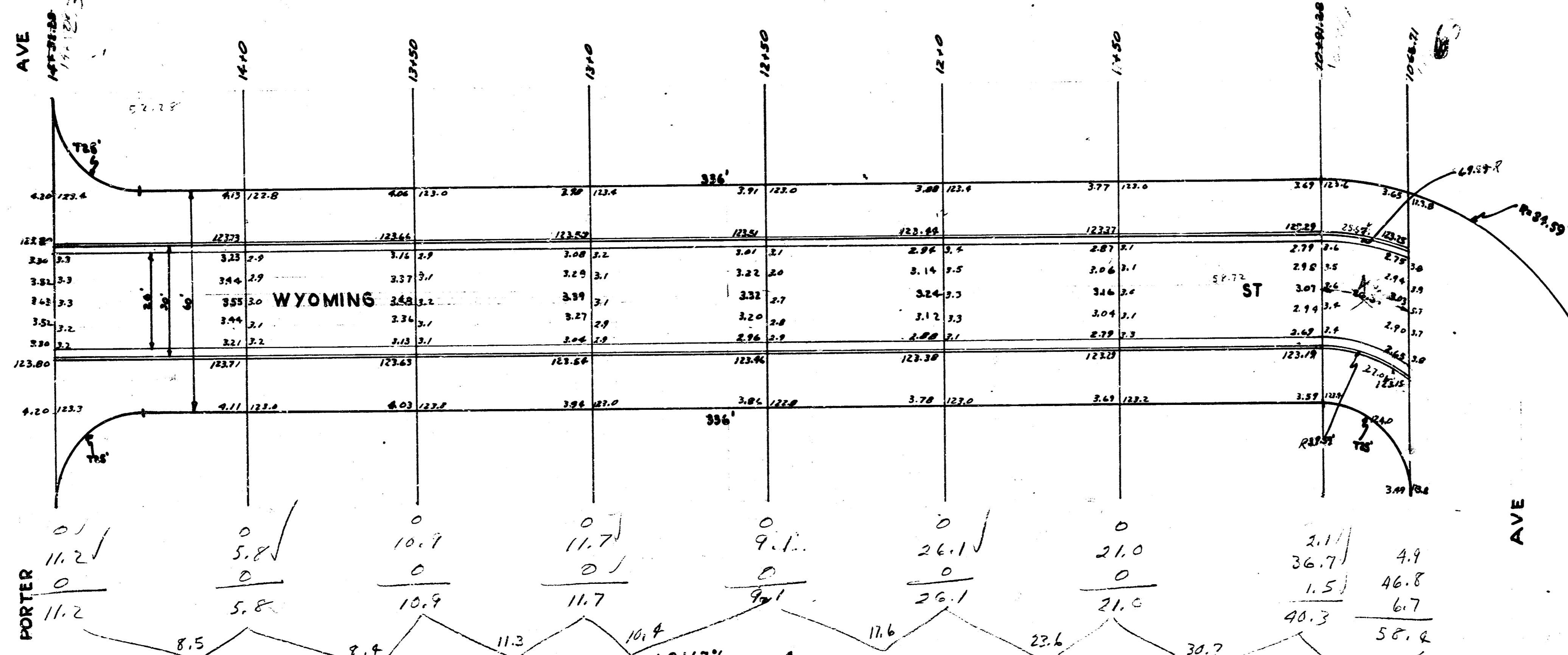


B.M. 125.48 N. Bolt Top of Fire Hyd. N.L. 18" E.L. Litchfield

+0.142
WK 0.4'



Prop
 48.1
 66.8
 42.7
 32.2
 11.3
 22.7
 15.6
 15.4
 202.4
 26.3
 Total 281.7 cu yds

14 2 12

WYOMING ST
 E.L. PORTER TO W.L. LITCHFIELD
 26-2-30 ASPH. CONC.
 CITY of WICHITA, KANSAS
 L.K. WHITE CITY ENGINEER
 MARCH 1947

Note:
 Stations are taken along north curb line



4 12 3 18