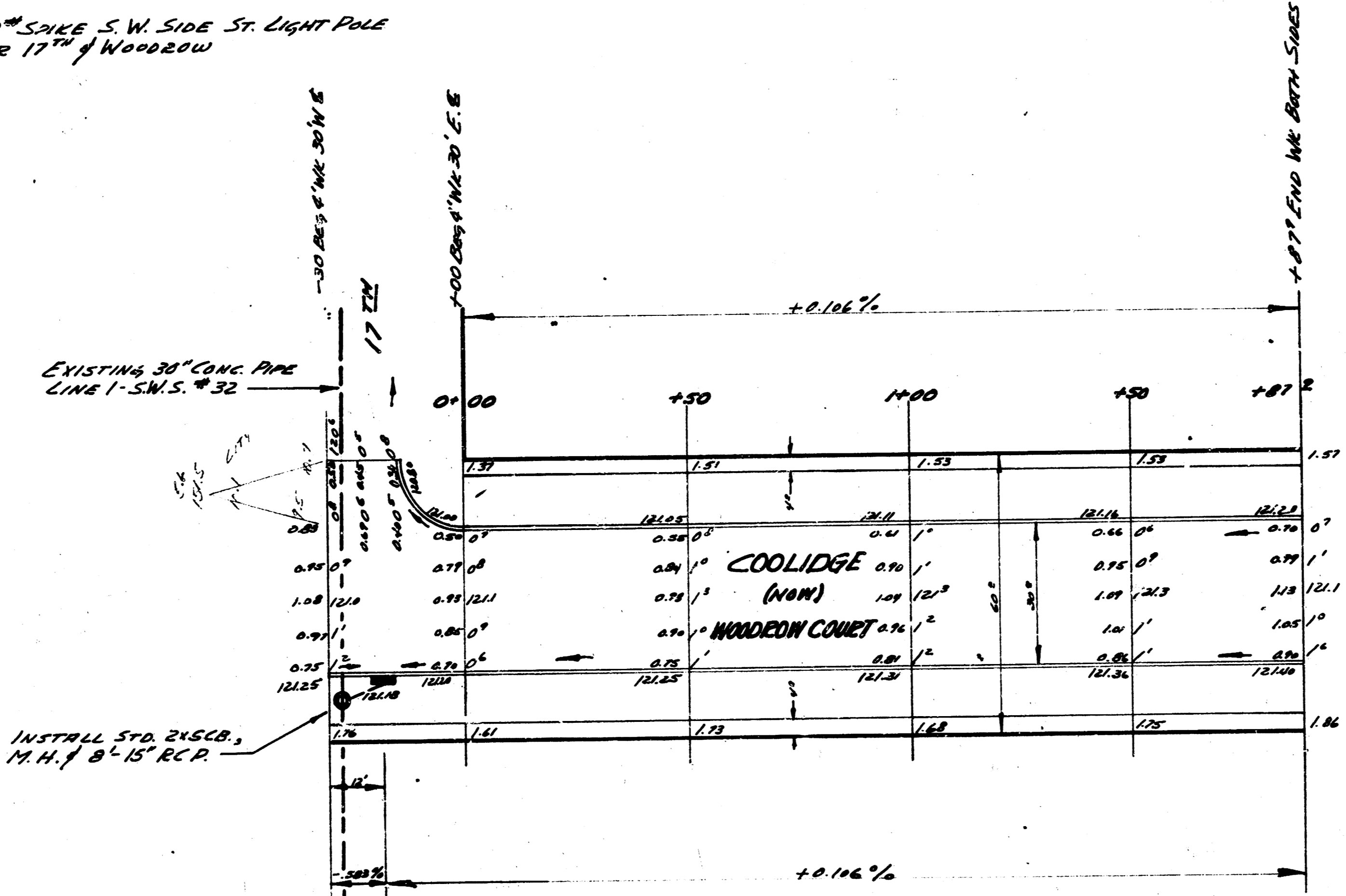


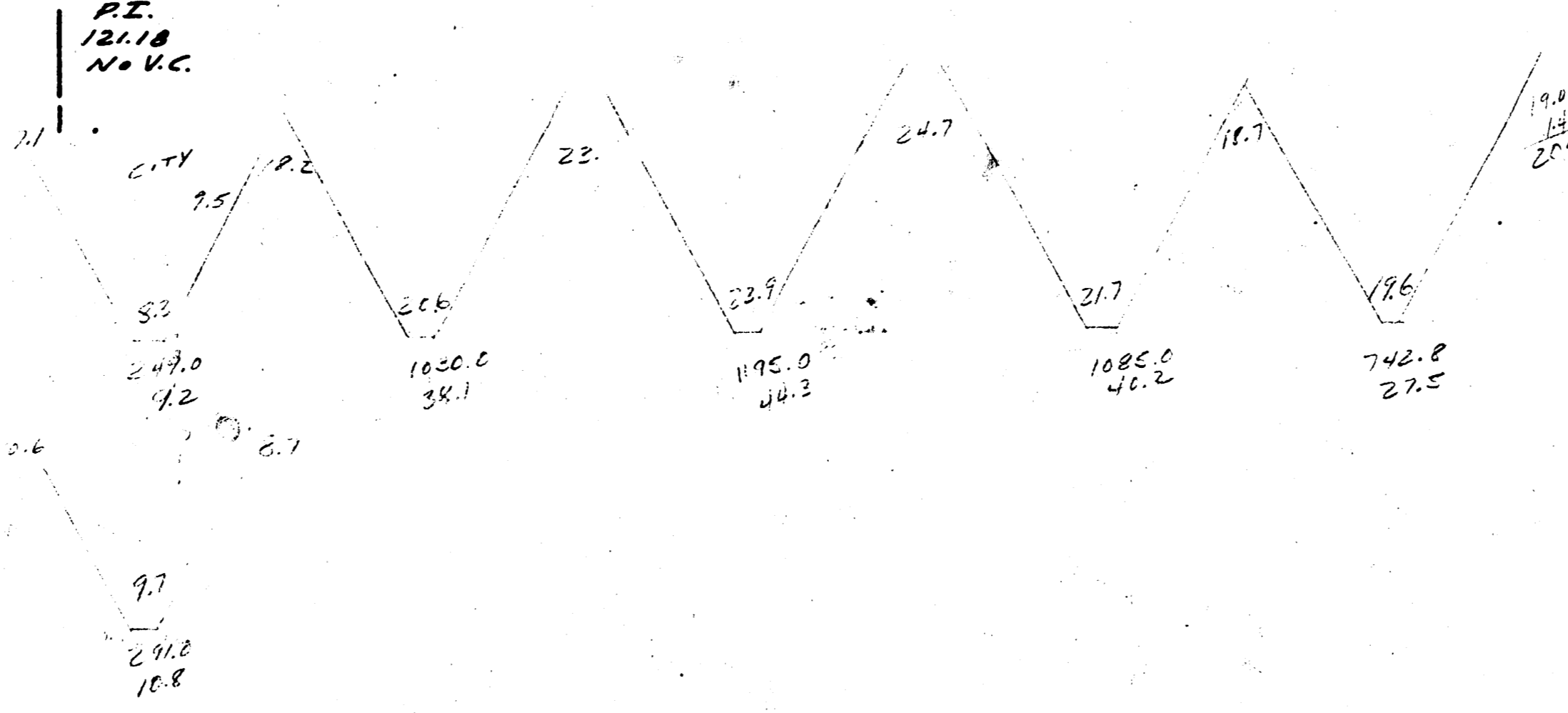
M-9

NOTE - B.M. 12147 60" SPIKE S.W. SIDE ST. LIGHT POLE
N.W. COR 17TH & WOODROW



TOTAL EXCAVATION

| CITY | DEPT. |
|------|----------------|
| N.S. | 165.9 |
| 44% | 163 CIV. DEPT. |
| 1.2% | 177 CIV. DEPT. |



COOLIDGE
WOODROW COURT
E 17TH 217TH SO.
30' CONC. F.C.B.
CITY OF WICHITA, KANSAS
L.K. WHITE CITY ENGINEER
AUGUST 1952 PROJ. NO. C12-51

DATE