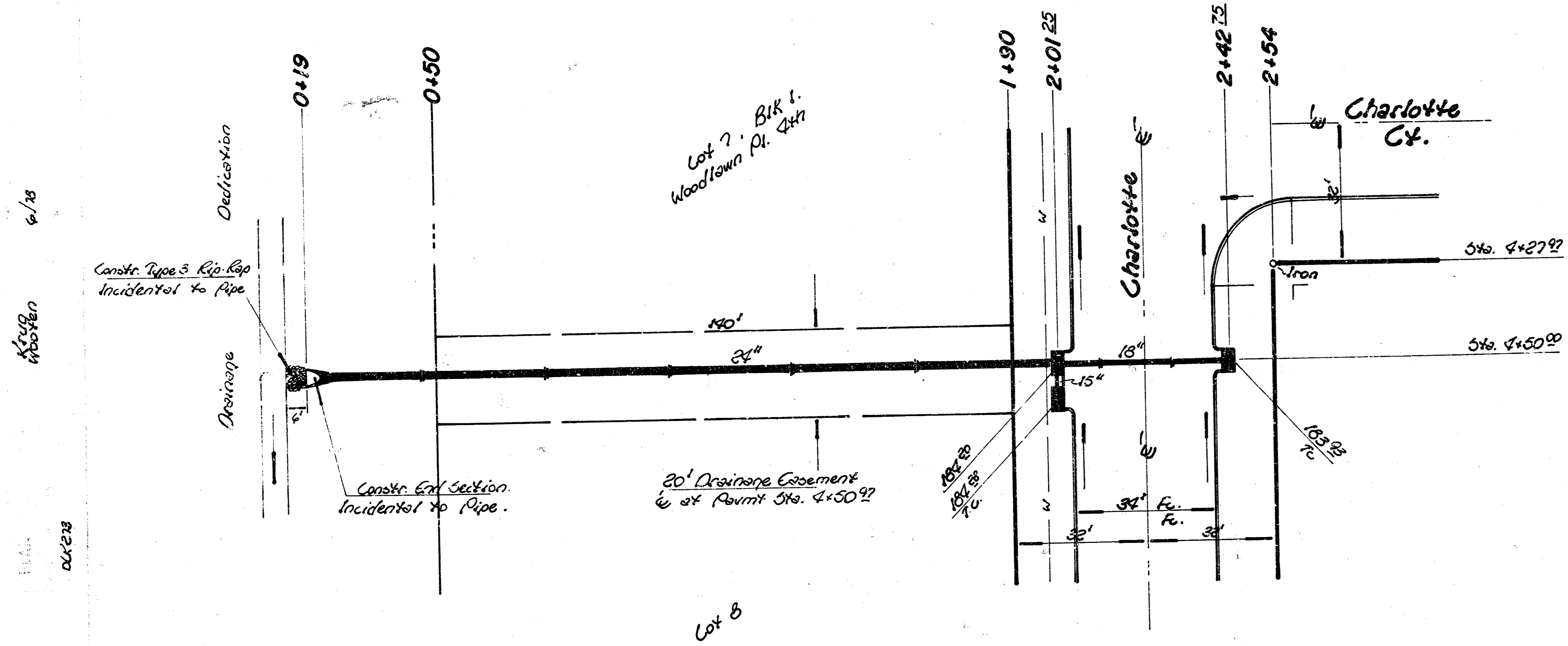


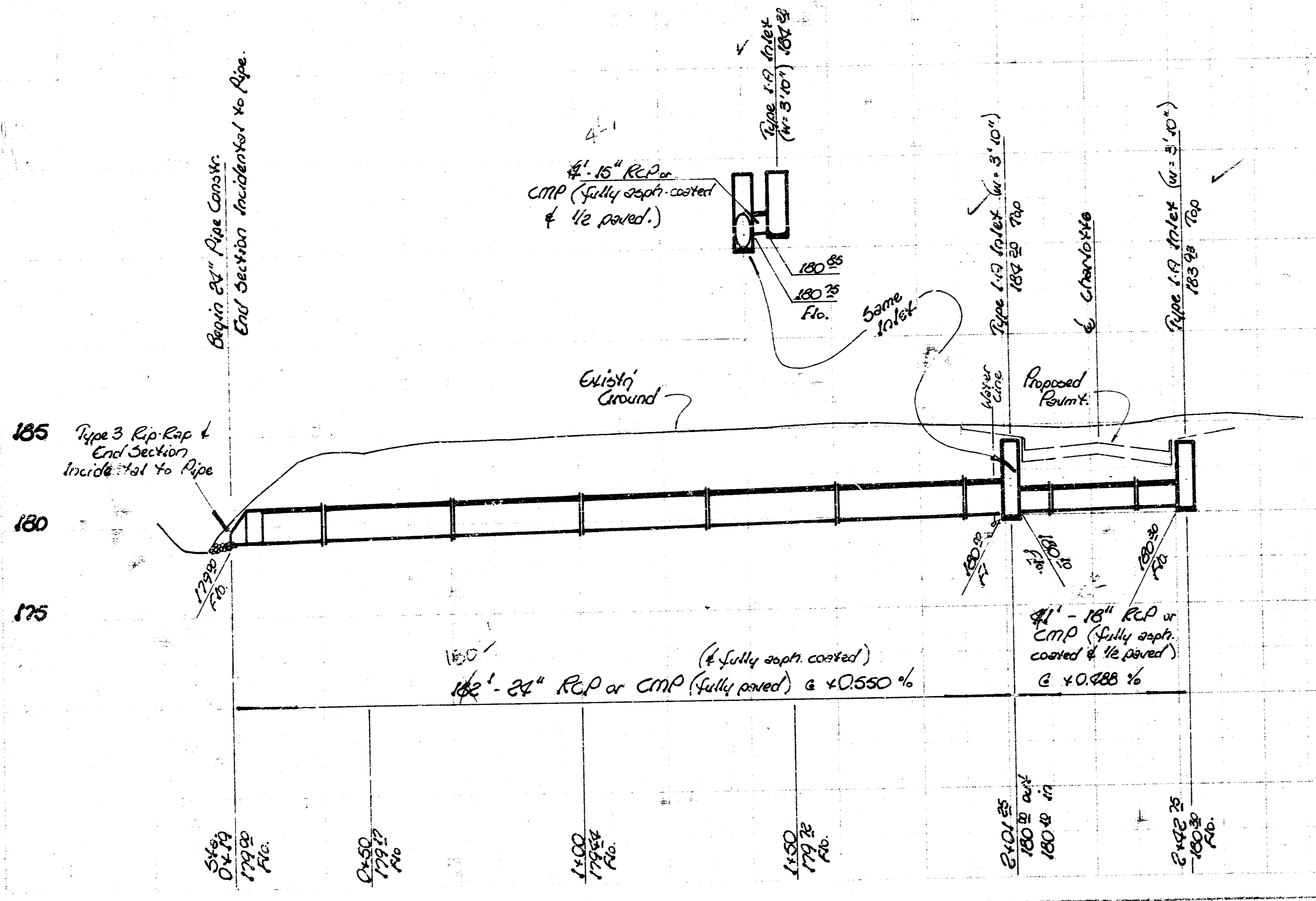
B.M. 180⁰⁰ 4' Top N. Co. Maingate on Charlotte.



Scale:
Plan - 1" = 20'
Profile - 1" = 5' Vert.
1" = 20' Hor.

Note:
Type 1-A Inlets to be constructed on this project.
Storm Sewer Contractor shall co-ordinate Construction w. Pavement Contractor.
Type 3 Rip-Rap & End Section shall be Incident to Cr. Pipe.

Note -
TYPE 3 RIP-RAP SHALL BE 12" RIP-RAP ON 6" SAND AND GRAVEL BEDDING. THE ROCK FOR RIP-RAP AND GRAVEL SHALL BE HARD, DENSE, DURABLE, AND SHOULD BE REASONABLY WELL GRADED. THE SIZE RANGE OF ROCK USED FOR 12 INCH RIP-RAP SHALL HAVE A MAXIMUM SIZE OF 1 CUBIC FT. AND A MINIMUM SIZE OF 1 1/2 INCHES. THE 6" SAND AND GRAVEL BEDDING FOR RIP-RAP SHOULD BE A CONTINUOUS LAYER OF SAND OR GRAVEL AND CRUSHED ROCK, REASONABLY WELL GRADED TO A MAXIMUM OF 1 1/2 INCHES IN SIZE.



AS BUILT
C-11
EX - MET - 0

Drainage in connection w. paving Streets in
Woodlawn Place 4th Addn.
City of Wichita, KS.
R. W. Linn City Engineer
Project No. _____
472-76-245-80675-000-000-002
Date _____

