

TYLER ENTRY PHASE 2  
PAVING STREETS IN  
**FOX RIDGE ADDITION**

AN ADDITION TO THE CITY OF WICHITA  
SEDGWICK COUNTY, KANSAS

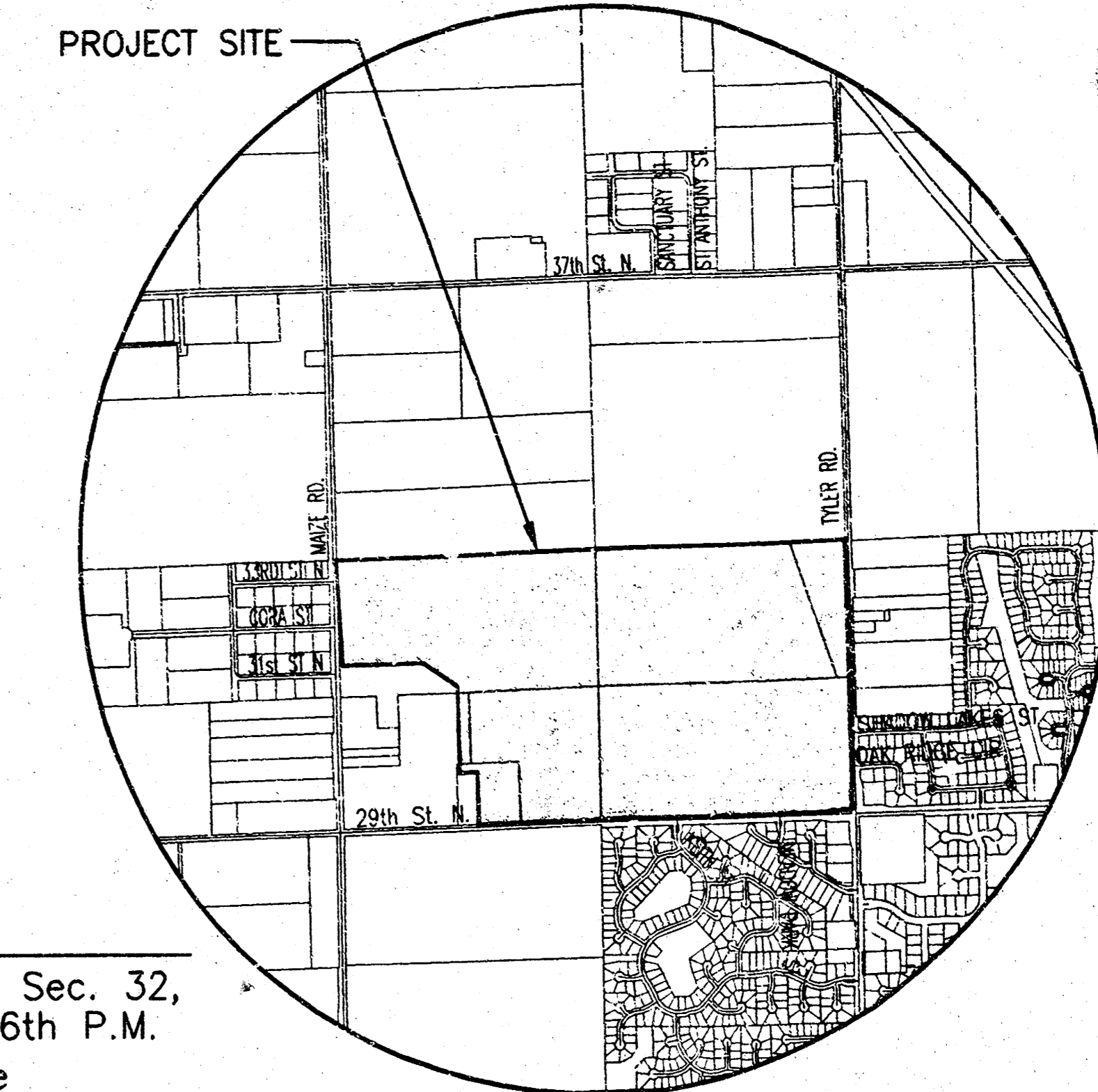
PROJECT NO. 472-83813

NEIL D. CARLE, P.E. - CITY ENGINEER

OCA 765811

**WESTLAKES PARKWAY: FROM THE EAST LINE OF LOT 174, BLOCK 1 TO 80 FEET WEST OF THE WEST LINE OF LOT 33, BLOCK 5.**

Center, Sec. 32,  
T26S, R1W, 6th P.M.  
Fnd. 1/2" Bar w/  
Baughman id cap



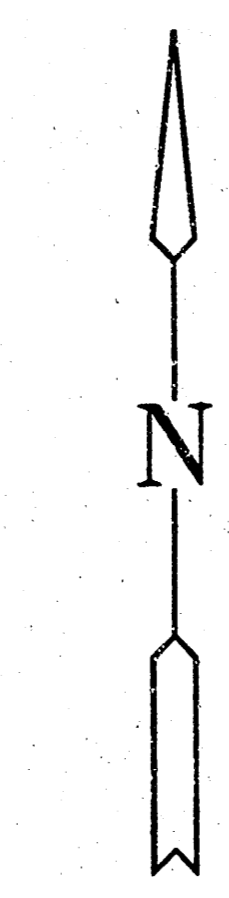
**VICINITY MAP**  
**INDEX TO DRAWINGS**

SHEET NO.	DESCRIPTION
1	TITLE SHEET
2-3	TYP. PAVING SECTIONS
4	VALLEY GUTTER DETAILS
5	WHEELCHAIR RAMP DETAILS
6	SIGNING DETAILS
7-8	PAVING PLANS
9-11	EROSION DETAILS
12	LINE 1 PLAN & PROFILE
13	LINE 2 PLAN & PROFILE
14	INLET DETAILS
15	UNDERDRAIN DETAILS
16-20	CROSS SECTIONS
21-23	FINAL PLATS

**BENCHMARKS**

- BM#1 Square cut top curb W. end of island at Shadow Lakes, East side of Tyler Rd. Elev. = 175.81
- BM#2 RR spike in W. face of South H-pole East of Tyler Rd., 3320 N. Tyler Rd. Elev. = 175.53
- BM#3 RR Spike in South face of South H-pole 3rd H-poles West of Tyler Rd. and 1/2 Mile N. of 29th St. N. Elev. = 169.24

SCALE: 1" = 200'



**GENERAL NOTES**

- UNLESS SHOWN OR STATED OTHERWISE ON THESE DRAWINGS, MATERIALS AND CONSTRUCTION SHALL BE IN ACCORDANCE WITH CITY OF WICHITA CONCRETE PAVEMENT AND ASPHALTIC CONCRETE PAVEMENT SPECIFICATIONS.
- CONTRACTOR WILL BE REQUIRED TO PROVIDE A MINIMUM ADVANCE NOTICE OF FORTY-EIGHT (48) HOURS TO UTILITY COMPANIES PRIOR TO STARTING ANY EXCAVATION AS FOLLOWS:  
KANSAS ONE-CALL 1-800-344-7233  
OR 687-2470 (LOCAL WICHITA)  
THE CONTRACTOR MUST NOTIFY THE FOLLOWING IN CASE OF AN EMERGENCY:  
SBC (TELEPHONE) 800-870-8390  
COX COMMUNICATIONS (CABLE) 262-0661  
WESTAR (ELECTRIC) 383-8600  
KANSAS GAS SERVICE (GAS) 832-3101  
CITY OF WICHITA WATER & SEWER MAINT. 262-6000  
AQUILA (GAS) 946-0096
- THE CONTRACTOR SHALL BE RESPONSIBLE FOR PRESERVING PROPERTY IRONS. THE CONTRACTOR WILL BE REQUIRED TO RE-ESTABLISH ANY PROPERTY IRONS WHICH ARE DAMAGED OR DESTROYED BY HIS CONSTRUCTION OPERATIONS. SUCH IRONS SHALL BE RE-ESTABLISHED BY A LICENSED LAND SURVEYOR IN ACCORDANCE WITH STATE LAWS.
- EXISTING UTILITIES AND THEIR LOCATIONS, AS SHOWN ON THE PLANS REPRESENT THE BEST INFORMATION OBTAINABLE FOR DESIGN. LOCATION INFORMATION HAS BEEN OBTAINED FROM THE VARIOUS UTILITY COMPANIES AND IS EITHER FROM COMPANY RECORD DRAWINGS OR COMPANY PROVIDED FIELD LOCATIONS. THE PLAN LOCATIONS SHOWN ARE NOT GUARANTEED. ADDITIONAL EXISTING UTILITIES MAY ALSO BE ENCOUNTERED.
- RUBBLE FROM THE REMOVAL OF MISCELLANEOUS STRUCTURES AND EXCESS EXCAVATION WHICH IS TO BE WASTED SHALL BE DISPOSED OF ON SITES TO BE PROVIDED BY THE CONTRACTOR. THESE SITES SHALL BE APPROVED BY THE ENGINEER AS TO SUITABILITY, APPEARANCE AND SITE LOCATION. LOCATIONS THAT, IN THE OPINION OF THE ENGINEER, WILL LEAVE AN UNSIGHTLY APPEARANCE WILL NOT BE APPROVED. ALL DISPOSAL SITES MUST BE APPROVED BY THE KANSAS DEPARTMENT OF HEALTH AND ENVIRONMENT. MATERIAL EITHER STOCKPILED OR DISPOSED OF IN A FLOOD PLAIN WOULD REQUIRE A KANSAS STATE BOARD OF AGRICULTURE PERMIT. ANY MATERIAL DUMPED IN WATERS OF THE UNITED STATES OR WETLANDS IS SUBJECT TO U.S. CORPS OF ENGINEERS PERMITTING REGULATIONS. ANY MATERIAL BURIED OR STOCKPILED BEYOND APPROVED CONSTRUCTION LIMITS WOULD REQUIRE ADDITIONAL ARCHAEOLOGICAL INVESTIGATIONS UNLESS BURIED IN A PREVIOUSLY APPROVED BORROW LOCATION.
- A SAW CUT OF AT LEAST ONE-HALF THE DEPTH OF THE EXISTING SURFACE COURSES OR ONE-FOURTH THE DEPTH OF THE EXISTING TOTAL PAVEMENT THICKNESS SHALL BE PROVIDED AT LOCATIONS WHERE PROPOSED CONSTRUCTION ABUTS AN EXISTING SURFACE OR PAVEMENT FOR WHICH PARTIAL REMOVAL OF THAT SURFACE OR PAVEMENT IS REQUIRED. SAW JOINT TO FACILITATE REMOVAL WITHIN THREE (3) FEET OF EXISTING JOINTS WILL NOT BE PERMITTED AND FOR SUCH INSTANCES THE LIMITS OF REMOVAL SHALL EXTEND TO THE EXISTING JOINT. SUCH SAW CUTS WILL NOT BE PAID FOR DIRECTLY AND THIS COST SHALL BE CONSIDERED AS SUBSIDIARY TO THE REMOVAL OF SURFACE OR PAVEMENT.
- CONTRACTOR SHALL SEED AND MULCH ALL DISTURBED AREAS WITH RYE GRASS AT A RATE OF 200 LBS. PER ACRE. GROUND SHALL BE PREPARED IN ACCORDANCE WITH CITY OF WICHITA SPECIFICATIONS.

EARTHWORK SUMMARY	
EXCAVATION	1400 C.Y.
LOOSE FILL	100 C.Y.
COMPACTED FILL	0 C.Y.



E. 1/4 Corner, Sec. 32,  
T26S, R1W, 6th P.M.  
Fnd. 3/4" Pipe

AS-BUILT: AUGUST 2004

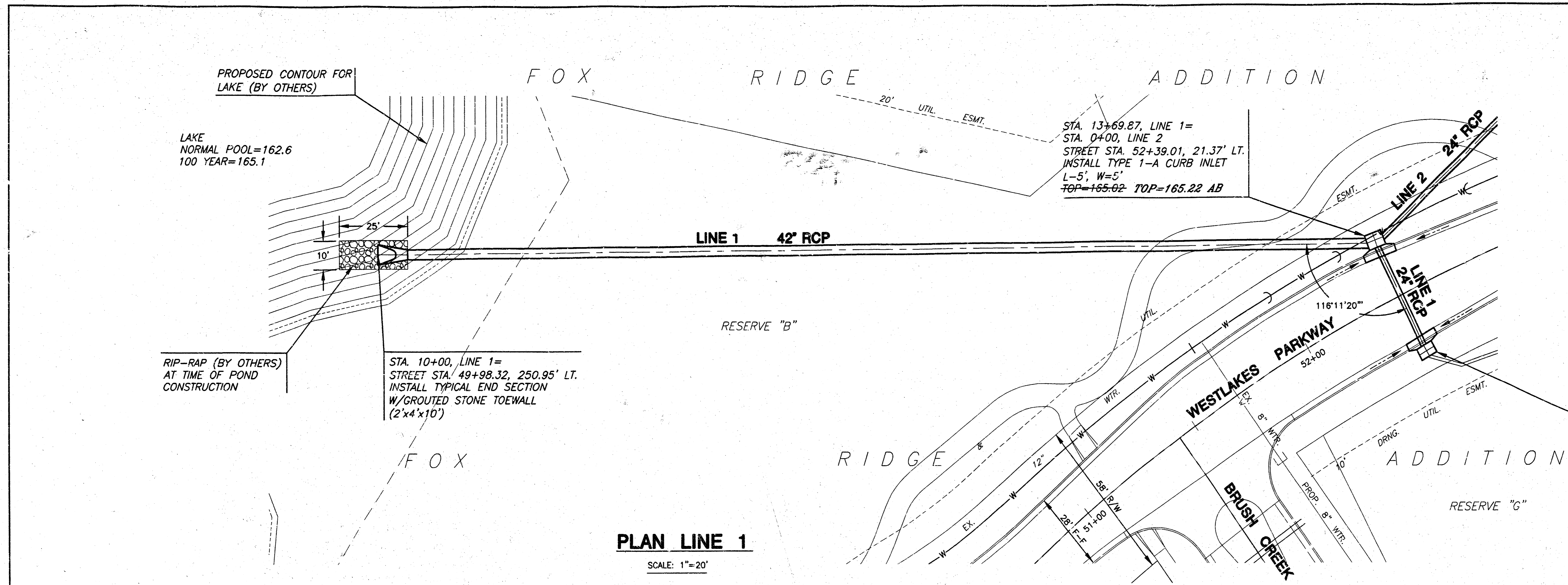
**FOX RIDGE ADDITION - ENTRY PHASE 2**  
PROJECT NAME

**PAVING PLANS - TITLE SHEET**  
SHEET TITLE

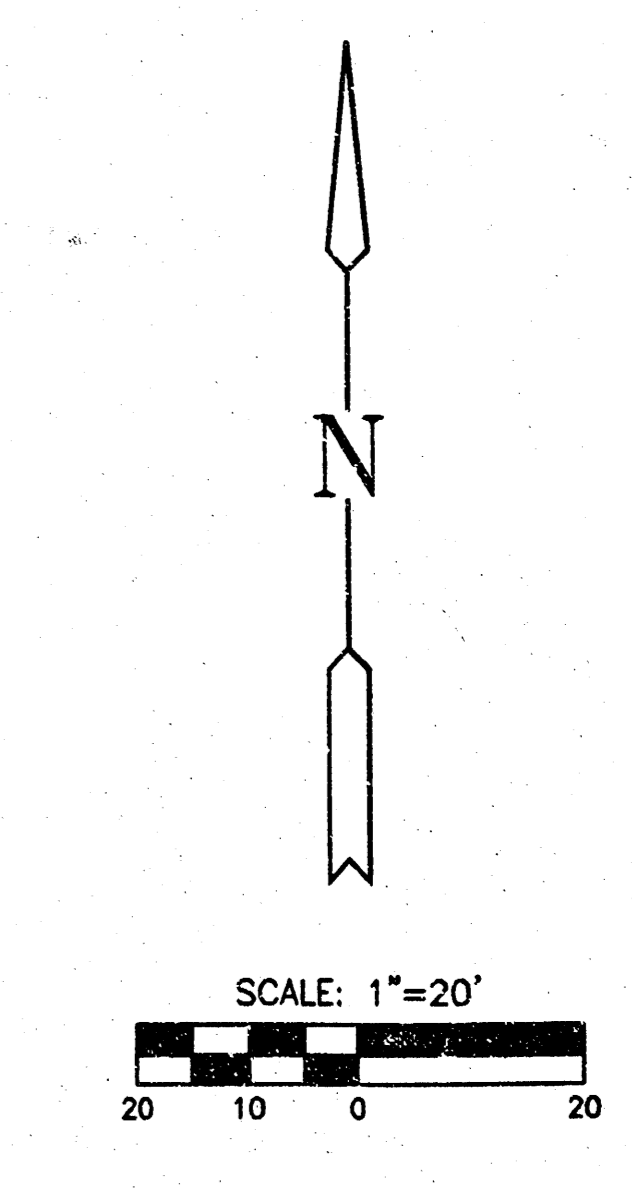
**MKEC ENGINEERING CONSULTANTS**  
411 N. WEBB ROAD  
WICHITA, KS. 67206  
316-264-9000

DESIGN BY: DK	DRAWN BY: DM	CHECKED BY: DK
DATE: JULY 2003	199118ET	1 / 23
	1/28 NO.	15SHEET/OF

**FOX RIDGE ADDITION  
ENTRY PHASE 2  
STORM WATER SEWER PLANS  
LINE 1**

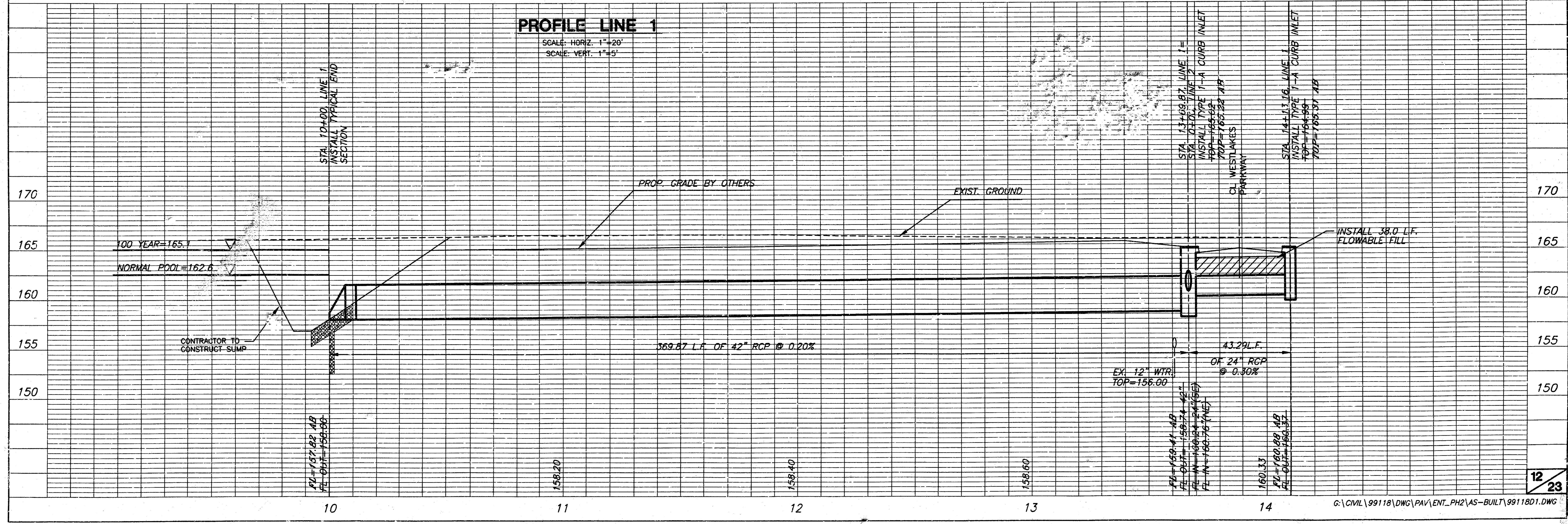


**PLAN LINE 1**  
SCALE: 1"=20'



STA. 14+07.29, LINE 1=  
STREET STA. 52+39.01, 21.89' RT.  
INSTALL TYPE 1-A CURB INLET  
L-5', W=3'  
TOP=164.99 TOP=165.31 AB

AS-BUILT: AUGUST 2004

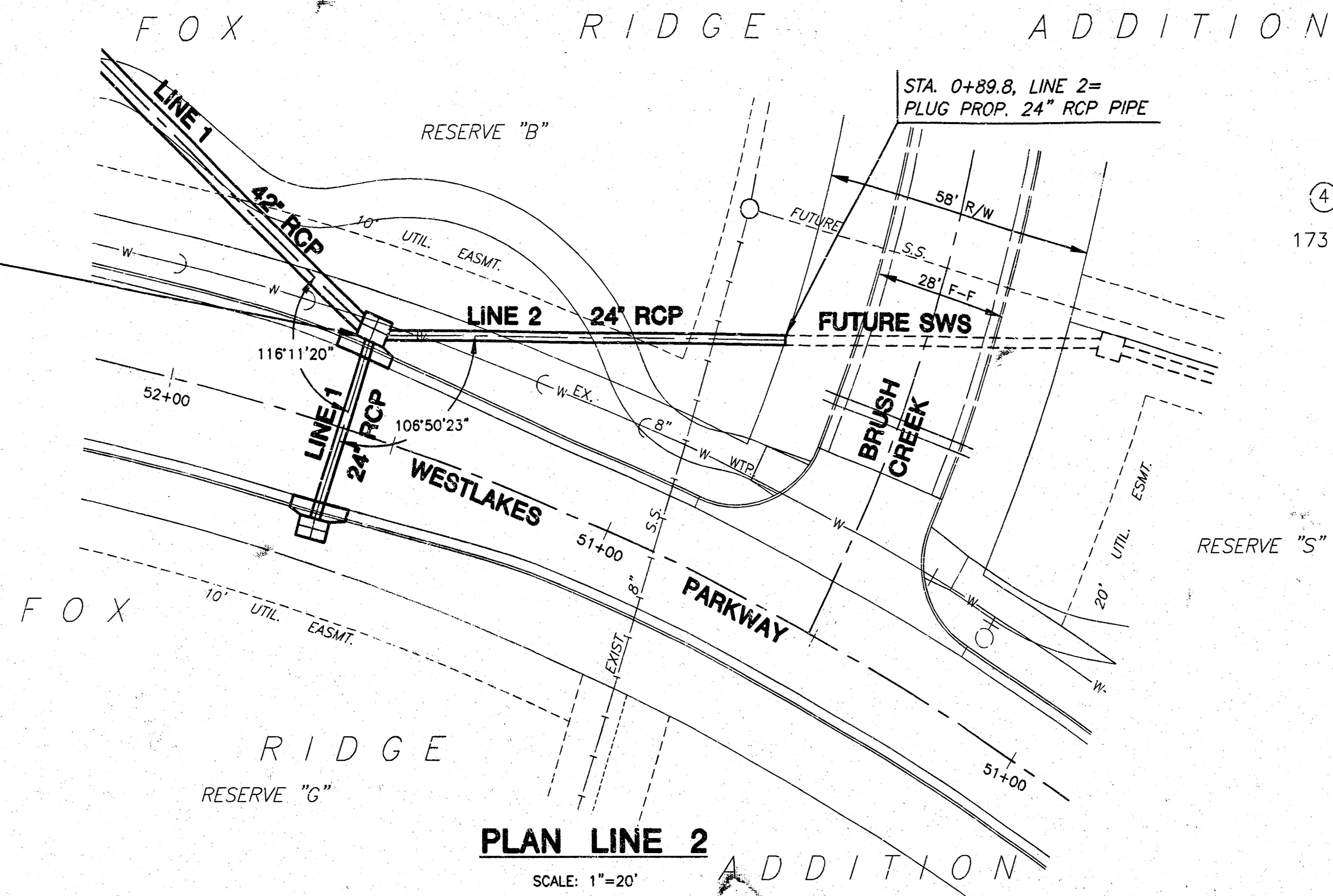


**PROFILE LINE 1**  
SCALE: HORIZ. 1"=20'  
SCALE: VERT. 1"=5'

**FOX RIDGE ADDITION  
ENTRY PHASE 2  
STORM WATER SEWER PLANS  
LINE 2**

STA. 0+00, LINE 2=  
STA. 13+69.87, LINE 1  
STREET STA. 52+39.01, 18.67' LT.  
TYPE 1-A CURB INLET  
TOP=165.02 TOP=165.22 AB

STA. 0+89.8, LINE 2=  
PLUG PROP. 24" RCP PIPE



**PLAN LINE 2**  
SCALE: 1"=20'

AS-BUILT: AUGUST 2004

**PROFILE LINE 2**

SCALE: HORIZ. 1"=20'  
SCALE: VERT. 1"=5'

