

8-1

MH # 5948-083
Approx depth = 10.2 ft

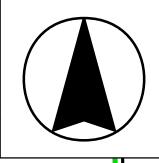
MH # 5948-082

Install 679 lf of 8"
Cured-in-Place Liner

MH # 5948-081
Approx depth = 10.3 ft

MH # 5948-036
Approx depth = 10.4 ft

SITE 8



607 N.
Brookfield

547 N.
Brookfield

521 N.
Brookfield

HAMPTON

MISSION

BROOKFIELD

STRATFORD

CENTRAL

ELM

223'

250'

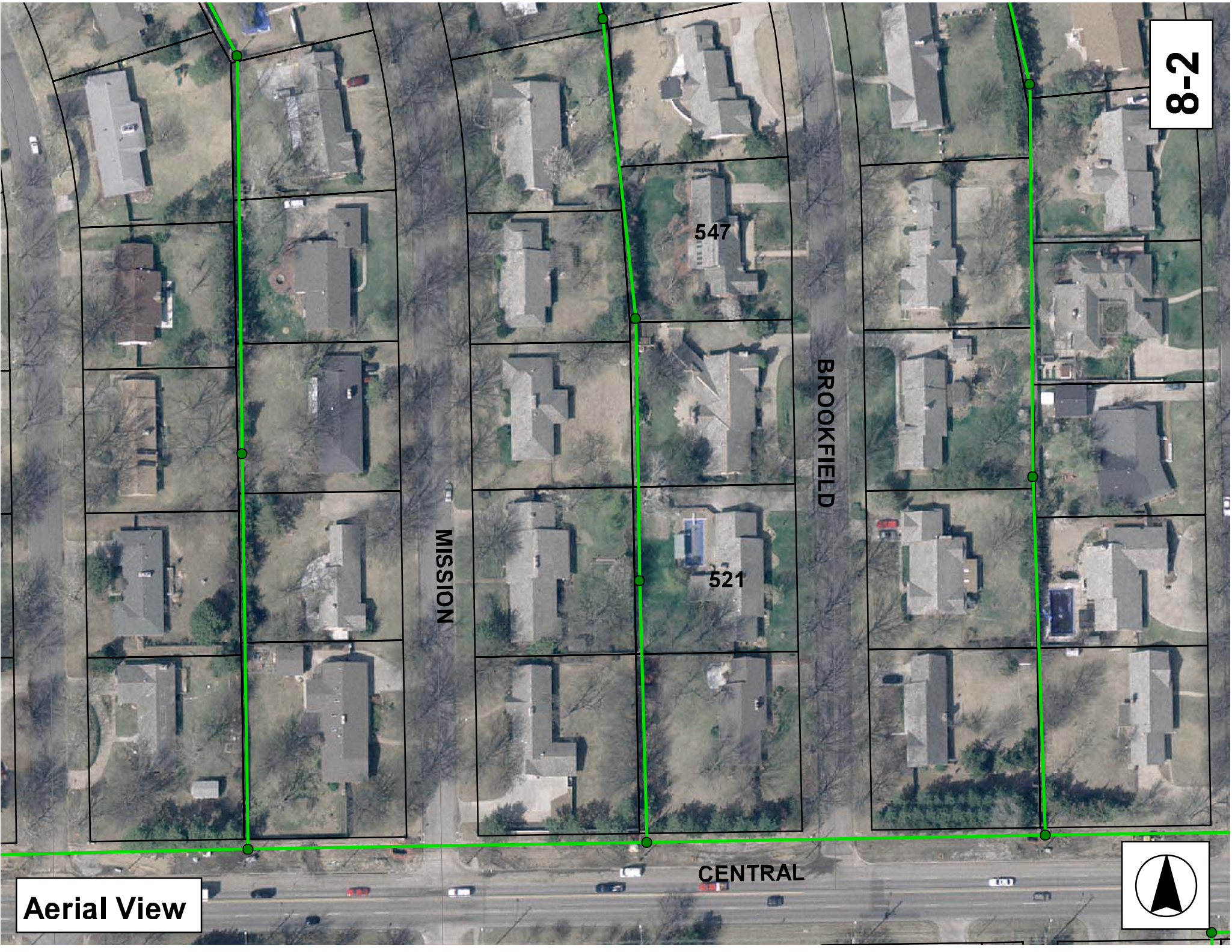
217'

212'

330'

331'

8-2



MISSION

BROOKFIELD

547

521

CENTRAL

Aerial View



Television Inspection Master Report

3/27/2007
3:28 PM

US Structure: 5948-083
DS Structure: 5948-082

607 N BROOKFIELD ST
547 N BROOKFIELD RD

Date Insp: 2/6/2007
Dir Televised: Upstream To Downstream

Basin: E01H

Pipe Information

H-004

Shape: Round Length Status: Project No.:
Dia/Ht Width: 8 0 Material: VCP Index:
Length: 250.8 Slope: 0.398 Surface:

Inspection Information

DVD #0244

Crew: 692 Percent Full: Tape ID:
Weather: Sunny Purpose: TV Existing Line Counter Start:
Surface Cond: Trees & Fences Flow: Normal Flow Counter Stop:

Obs. #	VTR Counter	Distance	Location	Description	Rating	Obsrvd (gpm)	Est. (gpm)	Ratings		
								Struct	Clean	Remain (gpm)
1		0.0	US Manhole 5948-083		1	0.000	0	0	0.000	
2		3.0	Joint	Offset	2	0.000	0	0	0.000	
3		3.0	Joint	Roots	1	0.002	1	1	0.002	
4		5.0		Debris	2	0.000	0	0	0.000	
5		13.7	Crown	Broken Pipe	3	0.010	60	0	0.010	
6		15.3	Joint	Roots	1	0.002	1	1	0.002	
7		18.5	Joint	Roots	1	0.002	1	1	0.002	
8		19.0		Grease	1	0.000	0	0	0.000	
9		31.0	Joint	Roots	1	0.002	1	1	0.002	
10		37.4	Upper Right	Broken Pipe	3	0.010	60	0	0.010	
11		39.1	East	Break-In Conn	3	0.004	2	0	0.004	
559 N BROOKFIELD ROOTS BROKEN PIPE										
12		40.7		Debris	2	0.000	0	0	0.000	
13		49.0	Joint	Roots	1	0.002	1	1	0.002	
14		51.9	Joint	Offset	2	0.000	0	0	0.000	
15		51.9	Joint	Roots	1	0.002	1	1	0.002	
16		55.1	Joint	Roots	2	0.004	2	4	0.004	
17		64.6	Start	Sag	2	0.000	2	0	0.000	
18		65.7		Grease	1	0.000	0	0	0.000	
19		73.0	End	Sag	2	0.000	2	0	0.000	
20		73.0	Joint	Roots	1	0.002	1	1	0.002	
21		76.2	Joint	Roots	1	0.002	1	1	0.002	
22		89.5	Start	Sag	1	0.000	1	0	0.000	
23		90.6	Joint	Offset	2	0.000	0	0	0.000	
24		93.9	End	Sag	1	0.000	1	0	0.000	
25		99.5	Joint	Offset	2	0.000	0	0	0.000	
26		100.2	West	Wye Service	1	0.000	0	0	0.000	
558 N MISSION										
27		104.1		Sealed Off Wye North	1	0.000	0	0	0.000	
28		111.8	Upper Left	Grease	1	0.000	0	0	0.000	
29		116.4	Upper Left	Grease	1	0.000	0	0	0.000	
30		122.5	Crown	Grease	1	0.000	0	0	0.000	
31		123.5	Joint	Offset	2	0.000	0	0	0.000	
32		124.0		Broken Pipe	1	0.004	30	0	0.004	
33		135.1	Joint	Offset	2	0.000	0	0	0.000	
34		152.5	Upper Left	Broken Pipe	2	0.008	44	0	0.008	
35		152.5	Joint	Offset	2	0.000	0	0	0.000	
36		156.0	Lower Right	Broken Pipe	2	0.008	44	0	0.008	

8-3

Television Inspection Master Report

3/27/2007
3:28 PM

US Structure: 5948-083 607 N BROOKFIELD ST **Date Insp:** 2/6/2007 **Basin:** E01H
DS Structure: 5948-082 547 N BROOKFIELD RD **Dir Televised:** Upstream To Downstream

37	158.3		Grease	1	0.000	0	0	0.000	
38	165.3	Start	Sag	2	0.000	2	0	0.000	
39	168.8	End	Sag	2	0.000	2	0	0.000	
40	173.7	Joint	Offset	2	0.000	0	0	0.000	
41	177.8	East	Break-In Conn	1	0.001	0	0	0.001	
547 N BROOKFIELD									
42	185.4	Joint	Offset	2	0.000	0	0	0.000	
43	188.4	Joint	Offset	3	0.010	20	0	0.010	
44	193.9	Crown	Grease	2	0.000	0	0	0.000	
45	195.4	Upper Left	Grease	1	0.000	0	0	0.000	
46	203.1	Joint	Offset	2	0.000	0	0	0.000	
47	204.4		Grease	1	0.000	0	0	0.000	
48	206.5		Grease	1	0.000	0	0	0.000	
49	210.6	Start	Sag	2	0.000	2	0	0.000	
50	215.8	End	Sag	2	0.000	2	0	0.000	
51	228.8		Sealed Off Wye East	1	0.000	0	0	0.000	
52	230.9	West	Wye Service	1	0.000	0	0	0.000	
546 N MISSION									
53	233.8		Grease	1	0.000	0	0	0.000	
54	239.9	Upper Left	Broken Pipe	4	0.030	78	0	0.030	
55	240.6	Joint	Offset	3	0.010	20	0	0.010	
56	247.8	DS Manhole 5948-082		1	0.000	0	0	0.000	

Television Inspection Master Report

3/27/2007
3:28 PM

US Structure: 5948-082
DS Structure: 5948-081

547 N BROOKFIELD RD
521 N BROOKFIELD RD

Date Insp: 2/7/2007
Dir Televised: Upstream To Downstream

Basin: E01H

Pipe Information

H-004

Shape: Round Length Status: Project No.:
Dia/Ht Width: 8 0 Material: VCP Index:
Length: 217.6 Slope: 0.399 Surface:

Inspection Information

DVD #0244

Crew: 692 Percent Full: Tape ID:
Weather: Sunny Purpose: TV Existing Line Counter Start:
Surface Cond: Trees & Fences Flow: Normal Flow Counter Stop:

Obs. #	VTR Counter Comment	Distance	Location	Description	Rating	Obsrvd (gpm)	Est. (gpm)	Ratings		
								Struct	Clean	Remain (gpm)
1		0.0	US Manhole 5948-082		1		0.000	0	0	0.000
2		7.5	Joint	Offset	2		0.000	0	0	0.000
3		23.0	West	Break-In Conn	1		0.001	0	0	0.001
534 N MISSION										
4		24.3	Joint	Offset	2		0.000	0	0	0.000
5		30.3	Joint	Offset	2		0.000	0	0	0.000
6		42.6	Joint	Offset	2		0.000	0	0	0.000
7		54.3	Joint	Offset	3		0.010	20	0	0.010
8		60.5	Joint	Offset	2		0.000	0	0	0.000
9		63.5	East	Break-In Conn	2		0.002	0	0	0.002
535 N BROOKFIELD										
10		93.4		Crack-Horizontal	1		0.001	1	0	0.001
11		97.9		Sealed Off Wye North	1		0.000	0	0	0.000
12		100.4	West	Wye Service	1		0.000	0	0	0.000
534 N MISSION										
13		116.9	Joint	Roots	1		0.002	1	1	0.002
14		119.8	Joint	Roots	2		0.004	2	4	0.004
15		122.8	Joint	Roots	1		0.002	1	1	0.002
16		122.8	Joint	Offset	3		0.010	20	0	0.010
17		126.1	Joint	Roots	1		0.002	1	1	0.002
18		128.8	Joint	Roots	2		0.004	2	4	0.004
19		134.6	Joint	Roots	3		0.008	5	8	0.008
20		134.7	Joint	Offset	3		0.010	20	0	0.010
21		138.0	Joint	Roots	1		0.002	1	1	0.002
22		140.4	Joint	Roots	3		0.008	5	8	0.008
23		143.7	Joint	Roots	1		0.002	1	1	0.002
24		146.4	Joint	Roots	3		0.008	5	8	0.008
25		152.5	Joint	Roots	3		0.008	5	8	0.008
26		155.7	Joint	Roots	1		0.002	1	1	0.002
27		158.7	Joint	Offset	2		0.000	0	0	0.000
28		158.7	Joint	Roots	1		0.002	1	1	0.002
29		161.7	Joint	Roots	1		0.002	1	1	0.002
30		164.7	Joint	Roots	2		0.004	2	4	0.004
31		167.4	Upper Right	Broken Pipe	1		0.004	30	0	0.004
32		170.3	Joint	Roots	1		0.002	1	1	0.002
33		173.3	Joint	Roots	1		0.002	1	1	0.002

8-5

Television Inspection Master Report

3/27/2007
3:28 PM

US Structure: 5948-082 547 N BROOKFIELD RD Date Insp: 2/7/2007 Basin: E01H
DS Structure: 5948-081 521 N BROOKFIELD RD Dir Televised: Upstream To Downstream

34	179.5	Joint	Offset	2	0.000	0	0	0.000
35	185.3	Joint	Roots	2	0.004	2	4	0.004
36	185.4	Joint	Offset	2	0.000	0	0	0.000
37	188.2	Joint	Roots	2	0.004	2	4	0.004
38	191.0	Joint	Roots	1	0.002	1	1	0.002
39	191.0	Joint	Offset	2	0.000	0	0	0.000
40	194.3	Joint	Roots	1	0.002	1	1	0.002
41	197.3	Joint	Roots	2	0.004	2	4	0.004
42	200.5	Joint	Roots	4	0.010	10	25	0.010
43	200.5	Joint	Offset	2	0.000	0	0	0.000
44	204.0	Joint	Offset	5	0.060	100	0	0.060
13 FEET NORTH OF M.H 5948-081								
45	205.8	Joint	Offset	3	0.010	20	0	0.010
46	206.1		Grease	2	0.000	0	0	0.000
47	209.0	Joint	Offset	4	0.030	60	0	0.030

TELEVISION STOPPED

REVERSE SETUP:

Obs. #	VTR Counter	Distance	Location	Description	Rating	Obsrvd (gpm)	Est. (gpm)	Ratings Struct	Clean	Remain (gpm)
1		0.0	DS Manhole 5948-081		1		0.000	0	0	0.000
4	CO.0 H2S-0	02-20.5	LEL-0							
2	5948-081	LOOKING NORTH	3.0	Joint	2		0.004	2	4	0.004
3		3.0	Joint	Offset	4		0.030	60	0	0.030
LINE NEEDS REPAIR FROM M.H 5948-081 TO 14 FEET NORTH OF M.H										

**NOTE: THE DOWNSTREAM 20 LF OF PIPE WAS REPLACED "BY OTHERS".
PIPE SHOULD BE READY FOR LINER.**

8-6

Television Inspection Master Report

3/27/2007
3:28 PM

US Structure: 5948-081 521 N BROOKFIELD RD Date Insp: 2/7/2007 Basin: E01H
DS Structure: 5948-036 507 N BROOKFIELD RD Dir Televised: Upstream To Downstream

Pipe Information

Shape: Round Project No.: H-004 Dia/Ht: 8 Material: VCP Length: 217.9 Slope: 0.399

Inspection Information

DVD #0244

Crew: 692 Percent Full: Tape ID:
Weather: Sunny Purpose: TV Existing Line Counter Start:
Surface Cond: Trees & Fences Flow: Normal Flow Counter Stop:

Obs. #	VTR Counter	Distance	Location	Description	Rating	Obsrvd (gpm)	Est. (gpm)	Ratings Struct	Clean	Remain (gpm)
1		0.0	US Manhole	5948-081	1		0.000	0	0	0.000
	CO-0 H2S-0 02-20.5 LEL-0									
2		0.0		Broken Pipe	3		0.010	60	0	0.010
3		12.6	West	Break-In Conn	4		0.008	60	0	0.008
	522 N MISSION / Pipe missing around bottom of tap, but service pipe is intact, should be OK to line around the tap									
4		13.5	Break-In-Connection	Roots	3		0.008	5	8	0.008
5		13.5	Crown	Broken Pipe	4		0.030	78	0	0.030
6		19.0	Upper Left	Broken Pipe	2		0.008	44	0	0.008
7		19.1	Joint	Roots	1		0.002	1	1	0.002
8		19.1	Joint	Offset	2		0.000	0	0	0.000
9		25.4	Joint	Roots	1		0.002	1	1	0.002
10		37.3	Joint	Roots	1		0.002	1	1	0.002
11		43.9		Sealed Off Wye North	1		0.000	0	0	0.000
12		47.0	West	Break-In Conn	3		0.004	2	0	0.004
	522 N MISSION Roots inside									
14		47.5	East	Wye Service	3		0.000	2	0	0.000
	521 N BROOKFIELD ROOTS									
15		48.1	Upper Right	Broken Pipe	3		0.010	60	0	0.010
16		49.1	Joint	Roots	1		0.002	1	1	0.002
17		52.0	Joint	Offset	2		0.000	0	0	0.000
18		55.0	Joint	Roots	1		0.002	1	1	0.002
19		58.0	Joint	Offset	2		0.000	0	0	0.000
20		61.1	Upper Right	Broken Pipe	3		0.010	60	0	0.010
21		67.1	Joint	Offset	3		0.010	20	0	0.010
22		67.1	Joint	Roots	1		0.002	1	1	0.002
23		70.2	Joint	Roots	1		0.002	1	1	0.002
24		72.8	Joint	Offset	2		0.000	0	0	0.000
25		75.9	Joint	Roots	1		0.002	1	1	0.002
26		76.0	Joint	Offset	2		0.000	0	0	0.000
27		78.8	Joint	Roots	1		0.002	1	1	0.002
28		82.0	Joint	Roots	2		0.004	2	4	0.004
29		84.7	Upper Left	Broken Pipe	2		0.008	44	0	0.008
30		88.1	Invert	Broken Pipe	3		0.010	60	0	0.010
31		97.1	Joint	Offset	2		0.000	0	0	0.000
32		97.6	Invert	Broken Pipe	2		0.008	44	0	0.008
33		111.9	Upper Left	Broken Pipe	2		0.008	44	0	0.008
34		124.0	Joint	Offset	2		0.000	0	0	0.000
37		125.7		Stopped Inspection	5		0.000	0	0	0.000
35		126.7	Lower Right	Debris	3		0.000	0	0	0.000
36		127.1	Upper Right	Broken Pipe	5					

SEE REVERSE SETUP

TELEVISION STOPPED

8-7

Television Inspection Master Report

3/27/2007
3:28 PM

US Structure: 5948-081 521 N BROOKFIELD RD Date Insp: 2/7/2007 Basin: E01H
DS Structure: 5948-036 507 N BROOKFIELD RD Dir Televised: Downstream To Upstream

Pipe Information

Shape: Round Length Status: Project No.: H-004
Dia/Ht Width: 8 0 Material: VCP Index:
Length: 217.9 Slope: 0.399 Surface:

Inspection Information

Crew: 692 Percent Full: Tape ID: DVD #0244
Weather: Sunny Purpose: TV Existing Line Counter Start:
Surface Cond: Trees & Fences Flow: Normal Flow Counter Stop:

Obs. #	VTR Counter Comment	Distance	Location	Description	Rating	Obsrvd (gpm)	Est. (gpm)	Ratings Struct	Clean	Remain (gpm)
1		0.1	DS Manhole 5948-036 /	TV AGAINST FLOW	1		0.000	0	0	0.000
2		0.1	Joint / Offset / VCP begins /	CAMERA DOES NOT SHOW HOW SEVERE THE OFFSET IS						
3		10.8	Joint	Offset	2		0.000	0	0	0.000
4		13.7	Joint	Offset	3		0.010	20	0	0.010
5		19.9	Joint	Offset	2		0.000	0	0	0.000
6		22.9	Joint	Roots	1		0.002	1	1	0.002
7		25.9	Joint	Offset	3		0.010	20	0	0.010
8		29.0	Joint	Offset	2		0.000	0	0	0.000
9		34.9	Joint	Offset	2		0.000	0	0	0.000
10		43.8	Joint	Offset	3		0.010	20	0	0.010
11		52.9	Joint	Offset	3		0.010	20	0	0.010
12		52.9	Upper Left	Broken Pipe	2		0.008	44	0	0.008
13		61.9	Joint	Offset	2		0.000	0	0	0.000
14		67.8	Joint	Offset	2		0.000	0	0	0.000
15		70.6	East	Wye Service	1		0.000	0	0	0.000
507 N BROOKFIELD										
16		71.1	Joint	Offset	2		0.000	0	0	0.000
17		73.1	West	Wye Service	2		0.000	0	0	0.000
508 N MISSION ROOTS										
18		74.1	Joint	Roots	1		0.002	1	1	0.002
19		77.4		Broken Pipe	1		0.004	30	0	0.004
20		79.6	Joint	Offset	2		0.000	0	0	0.000
21		82.9	Joint	Offset	3		0.010	20	0	0.010
22		82.9	Crown	Broken Pipe	4		0.030	78	0	0.030
23		85.7	Joint	Offset	4		0.030	60	0	0.030
24		85.7		Debris	5		0.000	0	75	0.000
25		85.7		Broken Pipe	4		0.030	78	0	0.030
26		85.7		Stopped Inspection	5		0.000	0	0	0.000
BROKEN PIPE / METAL DEBRIS										

NOTE: There is a metal band or old knifing blade stuck in a joint at this location and this is the reason the camera cannot pass from either direction. Sewer Maintenance has removed the obstacle and the pipe should be ready for liner installation.

8-8