

16TH STREET NORTH

1648 N. Waco

MH # 5449-189  
Approx depth = 4.0 ft

JACKSON

WACO

(unpaved alley)

MH # 5449-186

Install 631 lf of 8" Cured-in-Place Liner  
from MH 5449-189 to MH 5449-182

# 5449-184U  
(Underground Union)  
(nothing visible at surface)

232' (private line)

Private Cleanout

MH # 5449-182  
Approx pipe depth = 4.0 ft +/-  
Approx manhole depth = 7.7 ft

115'

176'

1602 N. Waco

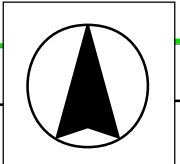
230 W. 15th St.

15TH STREET NORTH

30'

18"

SITE 10



10-2

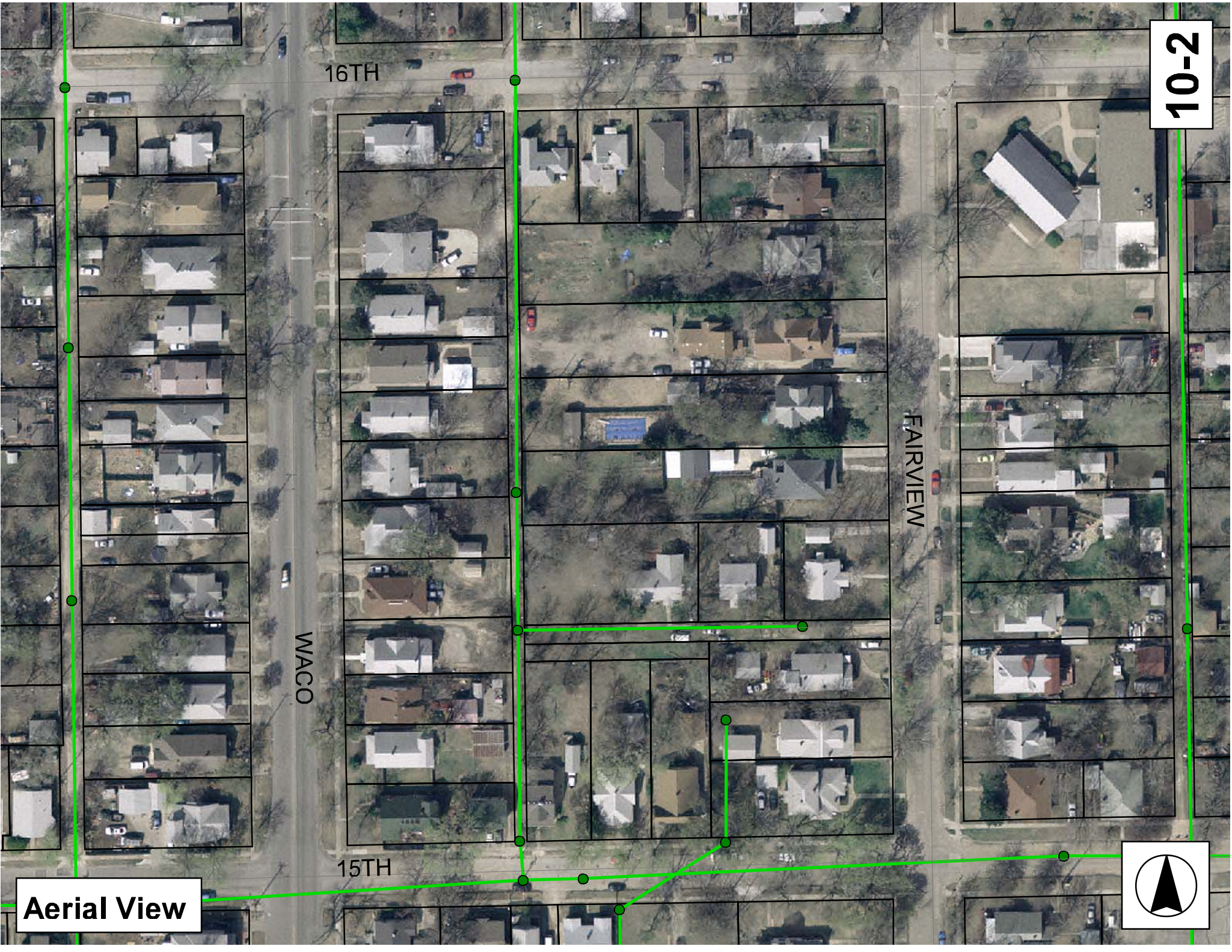
16TH

WACO

FAIRVIEW

15TH

Aerial View



# Television Inspection Master Report

4/30/2007  
9:38 AM

US Structure: 5449-189  
DS Structure: 5449-186

225 W 16TH ST N  
1630 N WACO AVE

Date Insp: 2/7/2006  
Dir Televised: Upstream To Downstream

Basin: C03F

## Pipe Information

A-091

Shape: Round Length Status: Project No.:  
Dia/Ht Width: 8 0 Material: VCP Index:  
Length: 346.5 Slope: 0.249 Surface:

## Inspection Information

Crew: 692 Percent Full: 10 Tape ID: 5011  
Weather: Cloudy Purpose: TV Existing Line Counter Start: 37.32  
Surface Cond: N/A Flow: Normal Flow Counter Stop:

## Obs. VTR

#	Counter	Distance	Location	Description	Rating	Obsrvd (gpm)	Est. (gpm)	Ratings		Remain (gpm)
								Struct	Clean	
1		0.0	US Manhole	5449-189	1		0.000	0	0	0.000
			CO-0% - O2 20.9% - H2S-0% - LEL 0%							
2		36.0	Quad 2 / L-Rt	Crack-Radial	3		0.004	5	0	0.004
3		37.0		Sealed Off Wye West	1		0.000	0	0	0.000
4		39.0		Sealed Off Wye East	1		0.000	0	0	0.000
5		62.0	West	Wye Service	1		0.000	0	0	0.000
			1648 N. Waco - live connection							
6		64.0		Sealed Off Wye East	1		0.000	0	0	0.000
7		87.0		Sealed Off Wye West	1		0.000	0	0	0.000
8		88.0	East	Wye Service	1		0.000	0	0	0.000
			226 W. 16th. N. - live connection							
9		99.0	East	Wye Service	1		0.000	0	0	0.000
			226 W. 16th. N. - live connection							
10		100.0	Quad 1 / U-Rt	Crack-Radial	3		0.004	5	0	0.004
11		111.0		Sealed Off Wye West	1		0.000	0	0	0.000
12		113.0	Crown	Crack-Radial	3		0.004	5	0	0.004
13		114.0	East	Wye Service	1		0.000	0	0	0.000
			1645 N. Fairview - live connection							
14		115.0	East	Break-In Conn	1		0.001	0	0	0.001
			1645 N. Fairview - live connection							
15		126.0	Crown	Crack-Radial	3		0.004	5	0	0.004
16		127.0		OH	1		0.000	0	0	0.000
17		136.0	West	Wye Service	1		0.000	0	0	0.000
			1638 N. Waco - live connection							
18		138.0		Sealed Off Wye East	1		0.000	0	0	0.000
19		160.0		Sealed Off Wye West	1		0.000	0	0	0.000
20		162.0	East	Wye Service	1		0.000	0	0	0.000
			1641 N. Fairview - live connecton							
21		185.0	West	Break-In Conn	1		0.001	0	0	0.001
			1636 N. Waco - live connection							
22		186.0		Sealed Off Wye East	1		0.000	0	0	0.000
23		192.0	Quad 1 / U-Rt	Broken Pipe	2		0.008	44	0	0.008
24		209.0	East	Wye Service	1		0.000	0	0	0.000
			1637 N. Fairview - live connection							
25		210.0	Quad 4 / U-Lt	Crack-Radial	3		0.004	5	0	0.004

10-3

# Television Inspection Master Report

4/30/2007  
9:38 AM

US Structure: 5449-189      225 W 16TH ST N      Date Insp: 2/7/2006      Basin: C03F  
DS Structure: 5449-186      1630 N WACO AVE      Dir Televised: Upstream To Downstream

26	211.0		Sealed Off Wye East	1	0.000	0	0	0.000
27	223.0	West	Wye Service	1	0.000	0	0	0.000
	1634 N. Waco - live connection							
28	224.0	Crown / Offset Joint	Broken Pipe	4	0.030	78	0	0.030
29	225.0	Quad 1 / U-Rt	Crack-Horizontal	3	0.004	5	0	0.004
30	232.0	Crown	Broken Pipe	2	0.008	44	0	0.008
31	234.0		OH	2	0.002	0	0	0.002
32	236.0		Sealed Off Wye West	1	0.000	0	0	0.000
33	238.0	East	Wye Service	1	0.000	0	0	0.000
	1631 N Fairview - live connection							
34	260.0	West	Wye Service	1	0.000	0	0	0.000
	1632 N. Waco - live connection							
35	262.0	East	Wye Service	1	0.000	0	0	0.000
	1631 N . Fairview - live connectin							
36	285.0		Sealed Off Wye West	1	0.000	0	0	0.000
37	287.0		Sealed Off Wye East	1	0.000	0	0	0.000
38	309.0		Sealed Off Wye West	1	0.000	0	0	0.000
39	311.0		Sealed Off Wye East	1	0.000	0	0	0.000
40	325.0	Crown	Broken Pipe	2	0.008	44	0	0.008
41	330.0	Crown	Broken Pipe	4	0.030	78	0	0.030
42	332.0	West	Wye Service	3	0.000	2	0	0.000
	1630 N. Waco - live connection							
43	333.0	Crown	Broken Pipe	3	0.010	60	0	0.010
44	334.0	East	Wye Service	3	0.000	2	0	0.000
	214 W. 15th N. - live connection							
45	335.0	Crown	Broken Pipe	2	0.008	44	0	0.008
46	339.0	DS Manhole	5449-186	1	0.000	0	0	0.000

**10-4**

# Television Inspection Master Report

4/30/2007  
9:38 AM

US Structure: 5449-186  
DS Structure: 5449-184U

1630 N WACO AVE  
1620 N WACO AVE

Date Insp: 2/8/2006  
Dir Televised: Upstream To Downstream

Basin: C03F

## Pipe Information

A-091

Shape: Round Length Status: Project No.:  
Dia/Ht Width: 8 0 Material: VCP Index:  
Length: 114.3 Slope: 0.254 Surface:

Obs. #	VTR Counter	Distance	Location	Description	Rating	Obsrvd (gpm)	Est. (gpm)	Ratings Struct	Clean	Remain (gpm)	
1		0.0	US Manhole	5449-186	CO-0% - O2-20.9% - H2S-0% - LEL-0%						
2		14.0	Crown	Broken Pipe	3		0.010	60	0	0.010	
3		18.0	Crown	Crack-Radial	3		0.004	5	0	0.004	
4		21.0	West	Wye Service	1		0.000	0	0	0.000	
	1628 N. Waco -										
5		23.0	East	Sealed Off Wye	1		0.000	0	0	0.000	
6		24.0	Quad 2 / L-Rt	Crack-Radial	3		0.004	5	0	0.004	
7		36.0	Crown	Broken Pipe	3		0.010	60	0	0.010	
8		43.0	West	Sealed Off Wye	1		0.000	0	0	0.000	
		46.0	East	Sealed Off Wye							
9		48.0	Crown	Broken Pipe	2		0.008	44	0	0.008	
10		57.0	Crown	Crack-Radial	3		0.004	5	0	0.004	
11		68.0	West	Wye Service	1		0.000	0	0	0.000	
	1624 N. Waco -										
12		69.0	Invert	Broken Pipe	4		0.030	78	0	0.030	
13		70.0		Sealed Off Wye East	1		0.000	0	0	0.000	
14		92.0		Sealed Off Wye West	1		0.000	0	0	0.000	
15		94.0	East	Wye Service	1		0.000	0	0	0.000	
	214 W. 15th N. -										
16		96.0		Observation Hole	1		0.000	0	0	0.000	
17		115.0	DS Underground Union	5449-184U							

10-5

# Television Inspection Master Report

4/30/2007  
9:38 AM

US Structure: 5449-184U      1620 N WACO AVE      Date Insp: 2/8/2006      Basin: C03F  
DS Structure: 5449-182      230 W 15TH ST N      Dir Televised: Upstream To Downstream

## Pipe Information

Project No.: A-091    Dia: 8      Material: VCP      Length: 176.8      Slope: 0.249

## Inspection Information

Crew: 692      Percent Full: 10      Tape ID: 5001  
Weather: Sunny      Purpose: TV Existing Line      Counter Start: 1.09.08  
Surface Cond: Unpaved Alley      Flow: Normal Flow      Counter Stop: 1.23.24

Obs. #	VTR Counter	Distance	Location	Description	Rating	Obsrvd (gpm)	Est. (gpm)	Ratings		
								Struct	Clean	Remain (gpm)
1		0.0	US Underground Union	5449-184U	1		0.000	0	0	0.000
2		4.0	Quad 1 / U-Rt	Crack-Radial	2		0.002	2	0	0.002
3		5.0	West	Wye Service	2		0.000	0	0	0.000
1620 N. Waco – some roots inside										
4		7.0		Sealed Off Wye East	1		0.000	0	0	0.000
5		24.0	Crown	Crack-Radial	3		0.004	5	0	0.004
6		29.0		Sealed Off Wye West	1		0.000	0	0	0.000
7		31.0		Sealed Off Wye East	1		0.000	0	0	0.000
8		53.0		Sealed Off Wye West	1		0.000	0	0	0.000
9		55.0		Sealed Off Wye East	1		0.000	0	0	0.000
10		56.0	Crown	Crack-Radial	3		0.004	5	0	0.004
11		78.0	West	Wye Service	1		0.000	0	0	0.000
1610 N. Waco -										
12		82.0		Observation Hole	1		0.000	0	0	0.000
13		86.0	Crown	Broken Pipe	2		0.008	44	0	0.008
14		93.0	Crown	Crack-Horizontal	3		0.004	5	0	0.004
15		96.0	East	Wye Service	1		0.000	0	0	0.000
230 W. 15th N. – roots inside										
16		97.0	Invert	Broken Pipe	3		0.010	60	0	0.010
17		102.0	West	Wye Service	2		0.000	0	0	0.000
1608 N. Waco – roots inside										
18		104.0		Sealed Off Wye East	1		0.000	0	0	0.000
19		107.0	Quad 4 / U-Lt	Crack-Horizontal	2		0.002	2	0	0.002
20		115.0	Quad 1 / U-Rt	Crack-Radial	3		0.004	5	0	0.004
21		123.0	Crown	Broken Pipe	2		0.008	44	0	0.008
22		126.0		Sealed Off Wye West	1		0.000	0	0	0.000
23		127.0	Quad 4 / U-Lt	Crack-Radial	3		0.004	5	0	0.004
24		128.0		Sealed Off Wye East	1		0.000	0	0	0.000
25		134.0	East	Break-In Conn	1		0.001	0	0	0.001
230 W. 15th. N. -										
26		135.0	West	Break-In Conn	1		0.001	0	0	0.001
1602 N. Waco – jagged tap										
27		137.0	West	Wye Service	1		0.000	0	0	0.000
1602 N. Waco -										
28		138.0	Quad 4 / U-Lt	Broken Pipe	2		0.008	44	0	0.008
29		146.0	Crown	Broken Pipe	3		0.010	60	0	0.010
30		151.0		Sealed Off Wye West	1		0.000	0	0	0.000
31		152.0		Sealed Off Wye East	1		0.000	0	0	0.000
32		158.0	Crown	Crack-Radial	3		0.004	5	0	0.004
33		166.0	Crown	Crack-Radial	3		0.004	5	0	0.004
34		170.0	Crown	Broken Pipe	3		0.010	60	0	0.010
35		172.0	DS Manhole	5449-182 (Manhole Reconstructed and an Outside Drop installed "by others" since this tv log was made.						

10-6