

N.W. Corner SW 1/4, Sec. 28  
Twp. 26S, R-1-W  
Found 3/4" Iron Pipe  
w/ 1.5875 Cap-Moehring

N.E. Corner SW 1/4, Sec. 28  
Twp. 26S, R-1-W  
Found 3/4" Rebar

Stabilized Construction Entrance  
See Detail Sheet No. 42.

Area Inlet Protection (Typ. of 11)  
See Detail Sheet Nos. 40 & 41.

Silt Fence Barrier  
See Detail Sheet No. 40.

Back of Curb Protection  
See Detail Sheet No. 42.

Silt Fence Barrier  
See Detail Sheet No. 40.

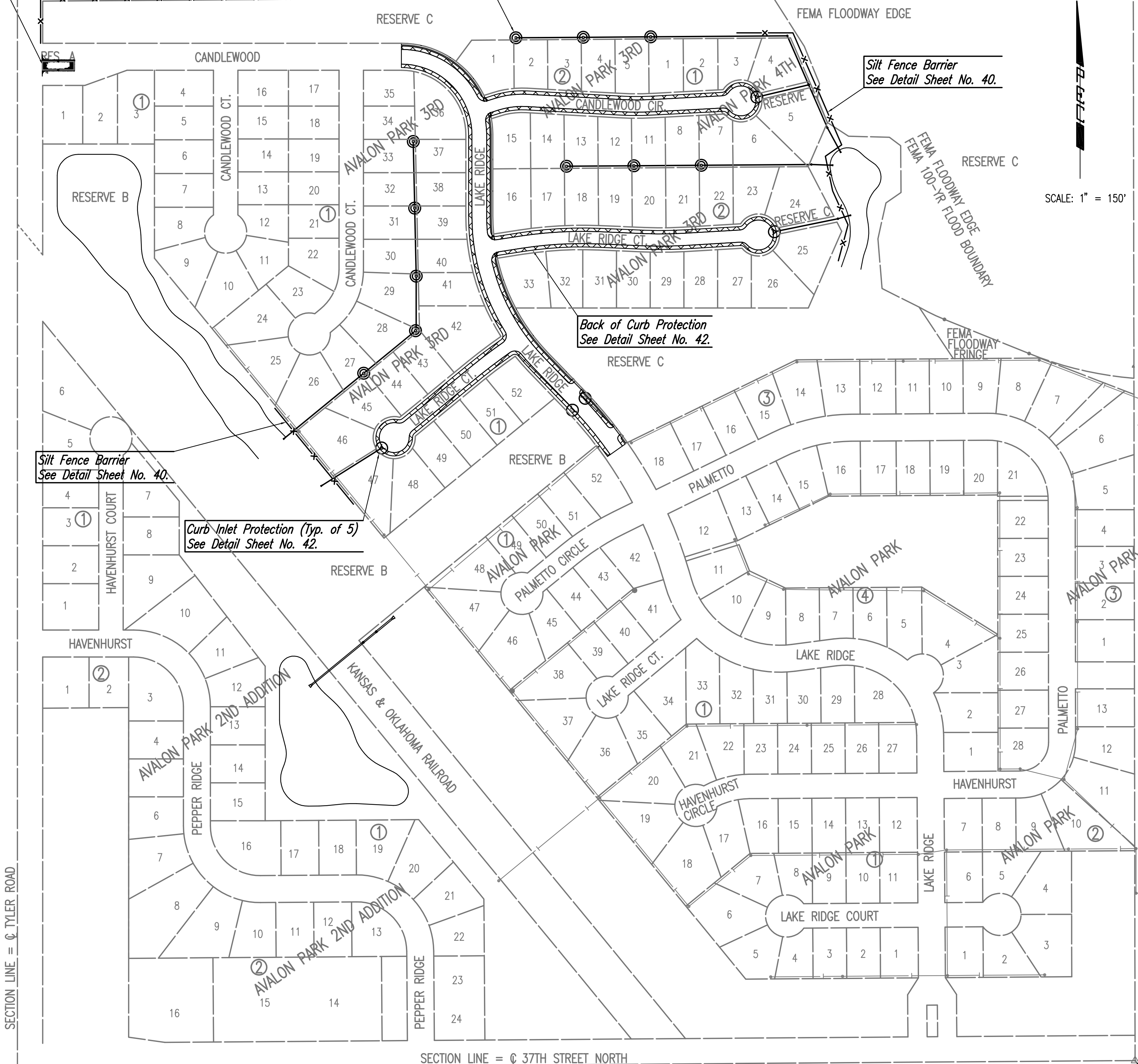
Curb Inlet Protection (Typ. of 5)  
See Detail Sheet No. 42.

**GENERAL NOTES**

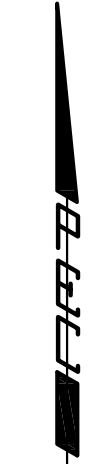
1. THE EROSION CONTROL DEVICES SHOWN ON THIS SHEET ARE CONSIDERED MINIMUM STANDARDS. WHENEVER SEDIMENT ENTERS THE STREETS, STORM SEWERS, DITCHES, OR PONDS, CONTRACTOR WILL INSTALL ADDITIONAL DEVICES, AS NEEDED, TO CORRECT THE PROBLEM.
2. THE EROSION CONTROL DEVICES SHOWN HEREON MUST BE IN PLACE AT ALL TIMES DURING CONSTRUCTION UNTIL THE SITE IS REESTABLISHED WITH PAVING OR GRASS. TEMPORARY OR PERMANENT SEEDING AND MULCH WILL BE INSTALLED WHEN EARTHWORK ACTIVITIES CEASE IN AN AREA FOR 14 DAYS OR MORE.
3. ANY MUD INADVERTENTLY TRACKED ONTO ANY STREET WILL BE CLEANED UP BY THE CONTRACTOR, AT THE END OF EACH DAY'S WORK.
4. CONTRACTOR TO FURNISH A TRUCK WASH-OUT PIT TO BE PLACED AT A CONVENIENT LOCATION THAT DOES NOT CONFLICT WITH CONSTRUCTION. CONTRACTOR SHALL CLEAN OUT AND BACKFILL PIT PRIOR TO FINAL INSPECTION.

**LEGEND**

- x— Silt Fence Barrier
- Curb Inlet Protection
- ⊙ Area Inlet Protection
- ▨ Back of Curb Protection
- ▭ Stabilized Construction Entrance



SCALE: 1" = 150'



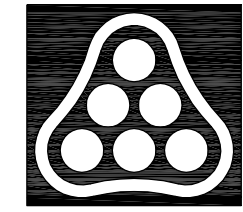
SECTION LINE = Q TYLER ROAD

SECTION LINE = Q 37TH STREET NORTH

S.W. Cor. SW 1/4,  
Sec. 28, Twp. 26S, R-1-W  
Found 3/4" Pipe

S.E. Corner SW 1/4,  
Sec. 28, Twp. 26S, R-1-W  
Found 5/8" Rebar

Sowed 09-11-2007 6:08:30 PM by BJB  
 Plot Scale 1:150 09-12-2007 7:35:48 AM by BJS  
 Q:\2007\07150\000\07150-000-C-EROSION CONTROL



No.	Revision	By	Date
AVALON PARK 3RD AND 4TH ADDITION-PHASE 1 <b>EROSION CONTROL PLAN</b> JAMES L. ARMOUR, P.E. - CITY ENGINEER CITY OF WICHITA PROJECT NO. 472-84441 <b>Professional Engineering Consultants, P.A.</b> 303 S. TOPEKA • WICHITA, KANSAS 67202 316-262-2691 • FAX 316-262-3003			
Designed by	BMM	Job No.	35-07150-000
Drawn by	BJS, TAT	Date	April 2007
			Sheet 38 of 68