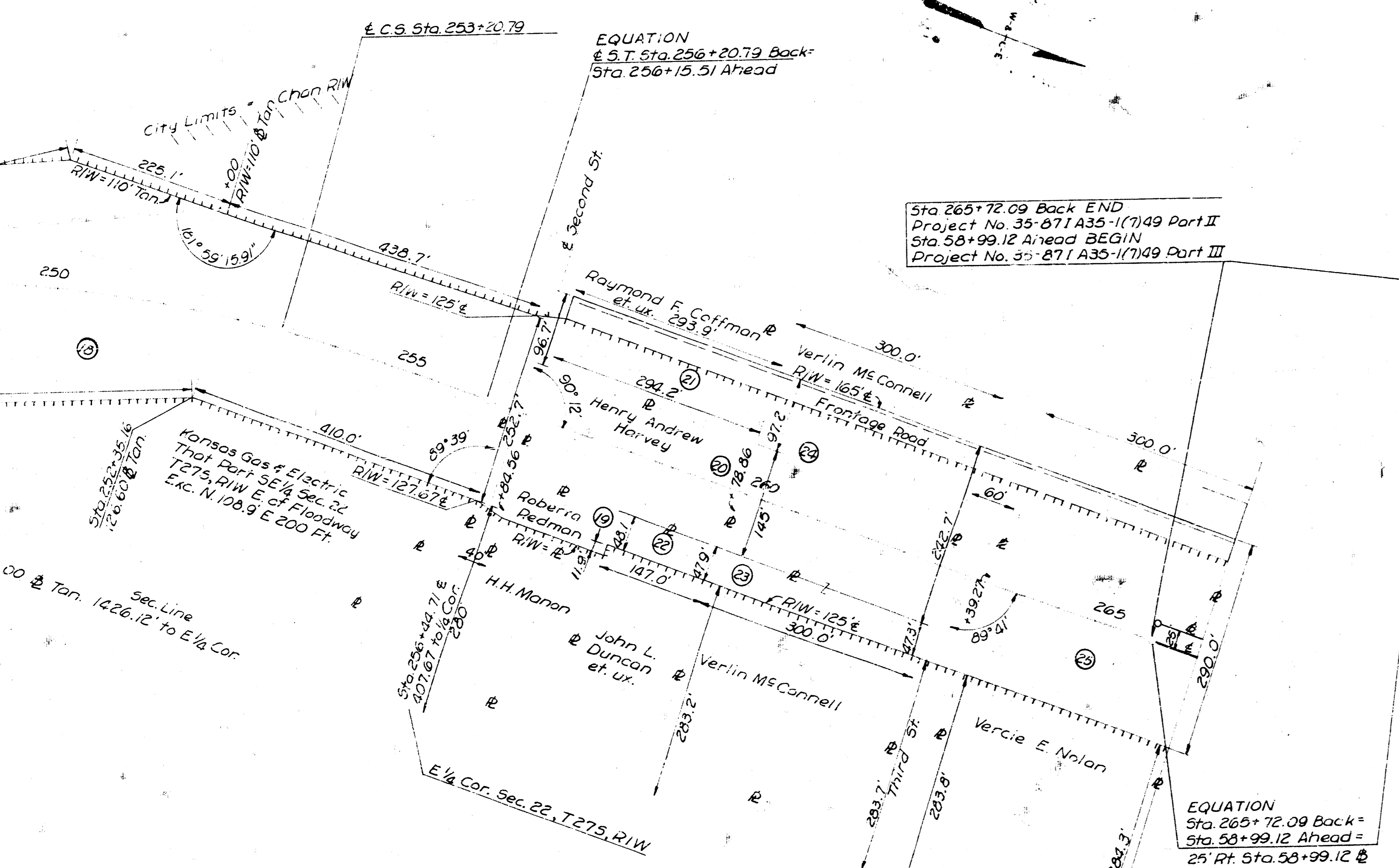


- AVERY ADDITION**
- Block 3 Lots 1 to 7 Morris Bldg. Co. Inc.
 - Block 3 Lot 8 Mary M.M. Boyd.
 - Block 3 Lots 9 & 10 Morris Bldg. Co. Inc.
 - Block 4 Lot 1 Morris Bldg. Co. Inc.
 - Block 4 Lot 2 Harry St. Impr. Co. Inc.
 - Block 4 Lot 3 Carolyn Kauffman
 - Block 4 Lots 4 to 10 Morris Bldg. Co. Inc.

PROPERTY OWNERSHIP MAP
THE CITY OF WICHITA, KANSAS
PROJECT NO. 35-871 A35-(7)49

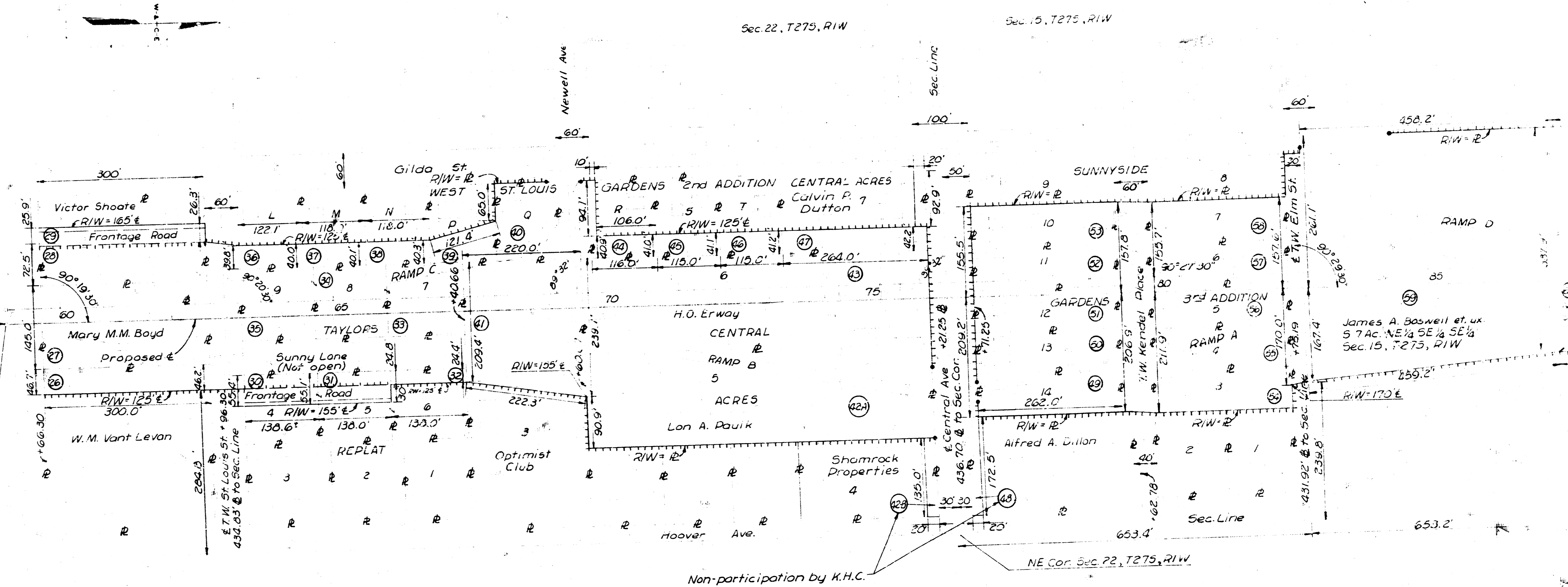
WILSON & COMPANY ENGINEERS & ARCHITECTS SALINA - KANSAS	DATE	September 2, 1954
	TITLE	35-871 A35-(7)49
	SHEET NO.	1
	OF	2

Sta 249+23.99 Back
Sta 248+06.09 Ahead
Sta 248+02.01



Sta 265+72.09 Back END
Project No. 35-871 A35-1(7)49 Part II
Sta 56+99.12 Ahead BEGIN
Project No. 35-871 A35-1(7)49 Part III

EQUATION
Sta 265+72.09 Back =
Sta 56+99.12 Ahead =
25 Rt. Sta. 56+99.12



- WEST ST. LOUIS GARDENS 2ND ADDITION**
- 36 Lot L Morris Bldg. Co. Inc.
 - 37 Lot M Francis A. Ball et ux.
 - 38 Lot N Mary M.M. Boyd
 - 39 Lot P Howard W. Johnson et ux.
 - 40 Lot Q Carolyn Kauffman
 - 41 Lot R Geo. A. McNeely et ux.
 - 42 Lot S Leslie H. Jones et ux.
 - 43 Lot T E.C.M. Corp. Inc.

- TAYLORS REPLAT of LOTS 1 & 2 CENTRAL ACRES**
- Lot 1 Hazel I. Killeen et al.
 - Lot 2 Luther S. Taylor
 - Lot 3 Jack S. Taylor et ux.
 - 30 Lot 4 Luther S. Taylor
 - 31 Lot 5 Luther S. Taylor
 - 32 Lot 6 Luther S. Taylor
 - 33 Lot 7 Luther S. Taylor
 - 34 Lot 8 Luther S. Taylor
 - 35 Lot 9 Luther S. Taylor

- SUNNYSIDE GARDENS 3RD ADDITION**
- 36 Lot 3 Ivy M. Reid
 - 37 Lot 4 Ewell King et al.
 - 38 Lot 5 Robt. H. Gipson et al.
 - 39 Lot 6 Mary M.M. Boyd
 - 40 Lot 7 Melvin L. Bird et ux.
 - 41 Lot 10 Carolyn Kauffman
 - 42 Lot 11 Janis Valdman et ux.
 - 43 Lot 12 Harold Bonta et ux.
 - 44 Lot 15 Anna M. Lacey
 - 45 Lot 14 Sam Jeffreys et ux.

CENTRAL AVENUE INTERCHANGE

Non-participation by K.H.C.

PROPERTY OWNERSHIP MAP

THE CITY OF WICHITA, KANSAS
LEGEND

- STATE OR NATIONAL LINE
- COUNTY LINE
- SECTION LINE
- TOWNSHIP LINE
- GRANT LINE
- CORPORATE LIMITS
- ACCESS CONTROL
- RIGHT OF WAY LINE
- TRAVELED WAY
- TRACT INDEX NUMBER

ACCESS RESTRICTED TO HIGHWAY
FROM ABUTTING PROPERTY

ACCESS NOT RESTRICTED TO FRONTAGE
ROAD FROM ABUTTING PROPERTY

EXISTING R/W

Scale 1" = 100'

EQUATION
Sta 192+00 to 192+46.88 Back
Sta 192+46.88 to 192+46.43 Ahead
P.T. Sta 192+46.43

Sta. 194+85.80 END
Project No. 35-871 A35-1(7)49 Part I
BEGIN
Project No. 35-871 A35-1(7)49 Part II

G. M. Groendycke
NE 1/4 SW 1/4 NE 1/4
PD Canal & Exc. 1.51
Ac. Floodway
Sec. 26, T275, R1W

Chas. C. Diomb
W 1/2 SW 1/4 NE 1/4
Sec. 26, T275, R1W

935 Rt. Sta 200+35.60
R/W = Pres. R/W

1/4 Sec. Line

1/4 Sec. Line

1/4 Sec. Line

1/4 Sec. Line

1/4 Sec. Line

1/4 Sec. Line

1/4 Sec. Line

1/4 Sec. Line

1/4 Sec. Line

1/4 Sec. Line

1/4 Sec. Line

1/4 Sec. Line

1/4 Sec. Line

1/4 Sec. Line

1/4 Sec. Line

1/4 Sec. Line

1/4 Sec. Line

1/4 Sec. Line

1/4 Sec. Line

1/4 Sec. Line

1/4 Sec. Line

1/4 Sec. Line

1/4 Sec. Line

1/4 Sec. Line

1/4 Sec. Line

1/4 Sec. Line

1/4 Sec. Line

1/4 Sec. Line

1/4 Sec. Line

1/4 Sec. Line

1/4 Sec. Line

1/4 Sec. Line

1/4 Sec. Line

1/4 Sec. Line

1/4 Sec. Line

1/4 Sec. Line

1/4 Sec. Line

1/4 Sec. Line

1/4 Sec. Line

1/4 Sec. Line

1/4 Sec. Line

1/4 Sec. Line

1/4 Sec. Line

1/4 Sec. Line

1/4 Sec. Line

1/4 Sec. Line

1/4 Sec. Line

1/4 Sec. Line

1/4 Sec. Line

1/4 Sec. Line

1/4 Sec. Line

1/4 Sec. Line

1/4 Sec. Line

1/4 Sec. Line

1/4 Sec. Line

1/4 Sec. Line

1/4 Sec. Line

1/4 Sec. Line

1/4 Sec. Line

1/4 Sec. Line

1/4 Sec. Line

1/4 Sec. Line

1/4 Sec. Line

1/4 Sec. Line

1/4 Sec. Line

1/4 Sec. Line

1/4 Sec. Line

1/4 Sec. Line

1/4 Sec. Line

1/4 Sec. Line

1/4 Sec. Line

1/4 Sec. Line

1/4 Sec. Line

1/4 Sec. Line

1/4 Sec. Line

1/4 Sec. Line

1/4 Sec. Line

1/4 Sec. Line

1/4 Sec. Line

1/4 Sec. Line

1/4 Sec. Line

1/4 Sec. Line

1/4 Sec. Line

1/4 Sec. Line

1/4 Sec. Line

1/4 Sec. Line

1/4 Sec. Line

1/4 Sec. Line

1/4 Sec. Line

1/4 Sec. Line

1/4 Sec. Line

1/4 Sec. Line

1/4 Sec. Line

1/4 Sec. Line

1/4 Sec. Line

1/4 Sec. Line

1/4 Sec. Line

1/4 Sec. Line

1/4 Sec. Line

1/4 Sec. Line

1/4 Sec. Line

1/4 Sec. Line

1/4 Sec. Line

1/4 Sec. Line

1/4 Sec. Line

1/4 Sec. Line

1/4 Sec. Line

1/4 Sec. Line

1/4 Sec. Line

1/4 Sec. Line

1/4 Sec. Line

1/4 Sec. Line

1/4 Sec. Line

1/4 Sec. Line

1/4 Sec. Line

1/4 Sec. Line

1/4 Sec. Line

1/4 Sec. Line

1/4 Sec. Line

1/4 Sec. Line

1/4 Sec. Line

1/4 Sec. Line

1/4 Sec. Line

1/4 Sec. Line

1/4 Sec. Line

1/4 Sec. Line

1/4 Sec. Line

1/4 Sec. Line

1/4 Sec. Line

1/4 Sec. Line

1/4 Sec. Line

1/4 Sec. Line

1/4 Sec. Line

1/4 Sec. Line

1/4 Sec. Line

1/4 Sec. Line

1/4 Sec. Line

1/4 Sec. Line

1/4 Sec. Line

1/4 Sec. Line

1/4 Sec. Line

1/4 Sec. Line

1/4 Sec. Line

1/4 Sec. Line

1/4 Sec. Line

1/4 Sec. Line

1/4 Sec. Line

1/4 Sec. Line

1/4 Sec. Line

1/4 Sec. Line

1/4 Sec. Line

1/4 Sec. Line

1/4 Sec. Line

1/4 Sec. Line

1/4 Sec. Line

1/4 Sec. Line

1/4 Sec. Line

1/4 Sec. Line

1/4 Sec. Line

1/4 Sec. Line

1/4 Sec. Line

1/4 Sec. Line

1/4 Sec. Line

1/4 Sec. Line

1/4 Sec. Line

1/4 Sec. Line

1/4 Sec. Line

1/4 Sec. Line

1/4 Sec. Line

1/4 Sec. Line

1/4 Sec. Line

1/4 Sec. Line

1/4 Sec. Line

1/4 Sec. Line

1/4 Sec. Line

1/4 Sec. Line

1/4 Sec. Line

1/4 Sec. Line

1/4 Sec. Line

1/4 Sec. Line

1/4 Sec. Line

1/4 Sec. Line

1/4 Sec. Line

1/4 Sec. Line

1/4 Sec. Line

1/4 Sec. Line

1/4 Sec. Line

1/4 Sec. Line

1/4 Sec. Line

1/4 Sec. Line

1/4 Sec. Line

1/4 Sec. Line

1/4 Sec. Line

1/4 Sec. Line

1/4 Sec. Line

1/4 Sec. Line

1/4 Sec. Line

1/4 Sec. Line

1/4 Sec. Line

1/4 Sec. Line

1/4 Sec. Line

1/4 Sec. Line

1/4 Sec. Line

1/4 Sec. Line

1/4 Sec. Line

1/4 Sec. Line

1/4 Sec. Line

1/4 Sec. Line

1/4 Sec. Line

1/4 Sec. Line

1/4 Sec. Line

1/4 Sec. Line

1/4 Sec. Line

1/4 Sec. Line

1/4 Sec. Line

1/4 Sec. Line

1/4 Sec. Line

1/4 Sec. Line

1/4 Sec. Line

1/4 Sec. Line

1/4 Sec. Line

1/4 Sec. Line

1/4 Sec. Line

1/4 Sec. Line

1/4 Sec. Line

1/4 Sec. Line

1/4 Sec. Line

1/4 Sec. Line

1/4 Sec. Line

1/4 Sec. Line

1/4 Sec. Line

1/4 Sec. Line

1/4 Sec. Line

1/4 Sec. Line

1/4 Sec. Line

1/4 Sec. Line

1/4 Sec. Line

1/4 Sec. Line

1/4 Sec. Line

1/4 Sec. Line

1/4 Sec. Line

1/4 Sec. Line

1/4 Sec. Line

1/4 Sec. Line

1/4 Sec. Line

1/4 Sec. Line

1/4 Sec. Line

1/4 Sec. Line

1/4 Sec. Line

1/4 Sec. Line

1/4 Sec. Line

1/4 Sec. Line

1/4 Sec. Line

1/4 Sec. Line

1/4 Sec. Line

PROPERTY OWNERSHIP MAP

THE CITY OF WICHITA, KANSAS

LEGEND

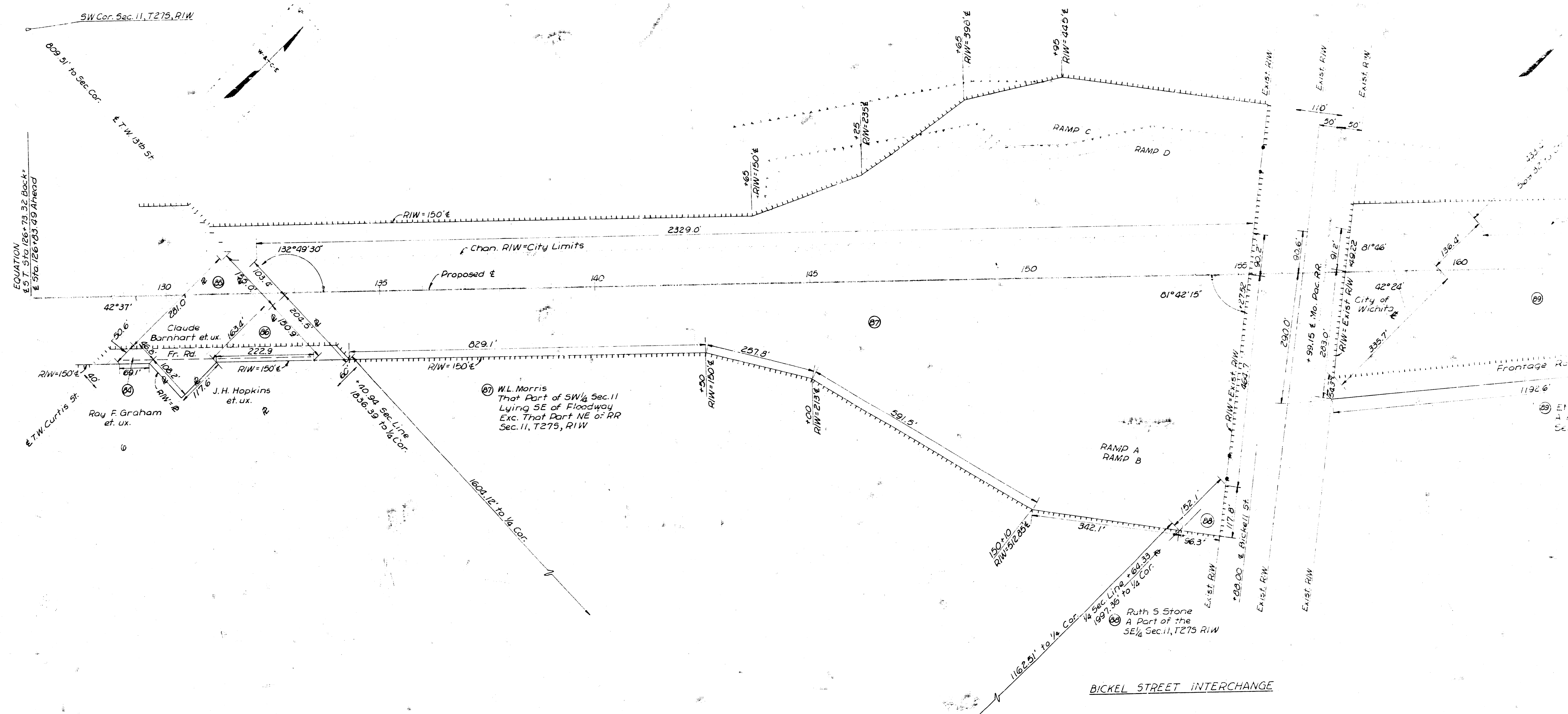
- STATE OR NATIONAL LINE
- COUNTY LINE
- SECTION LINE
- TOWNSHIP LINE
- GRANT LINE
- CORPORATE LIMITS
- ACCESS CONTROL
- RIGHT OF WAY LINE
- TRAVELED WAY
- TRACT INDEX NUMBER

ACCESS RESTRICTED TO HIGHWAY FROM ABUTTING PROPERTY

ACCESS NOT RESTRICTED TO FRONTAGE ROAD FROM ABUTTING PROPERTY

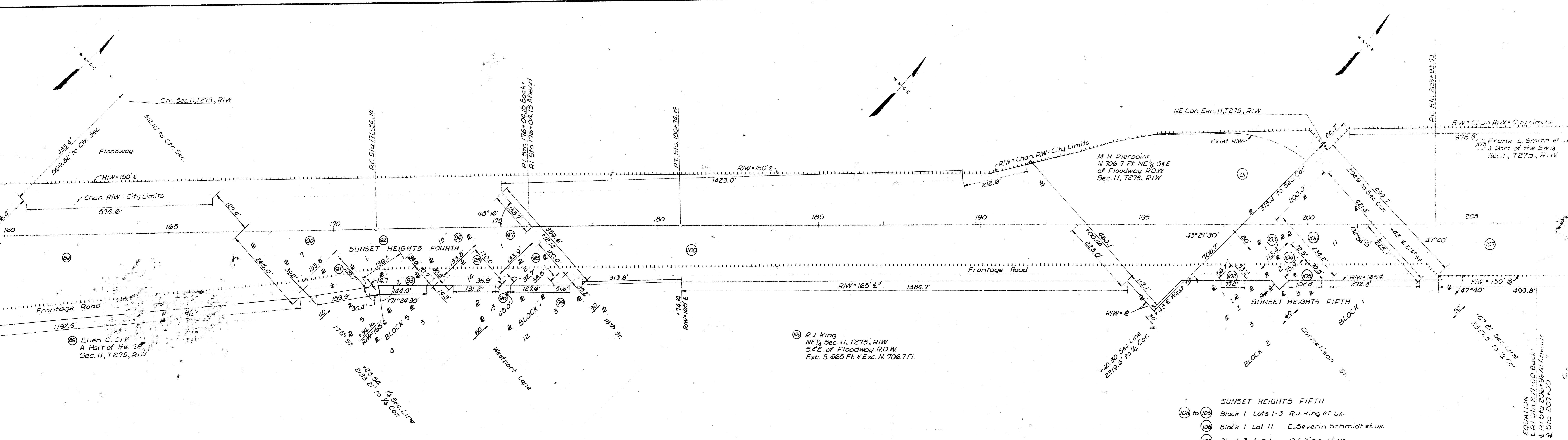
EXISTING R/W

Scale 1" = 100'



BICKEL STREET INTERCHANGE

DESIGNED BY: [unreadable] DRAWN BY: [unreadable] CHECKED BY: [unreadable] DATE: [unreadable]



SUNSET HEIGHTS FOURTH
 (97) to (99) Block 1 Lots 1-3 R.J. King et al.
 (94) to (96) Block 1 Lots 13-15 R.J. King et al.
 (90) to (93) Block 5 Lots 1-7 R.J. King et al.

(100) R.J. King
 NE 1/4 Sec. 11, T275, R1W
 S 4'E. of Floodway R.O.W.
 Exc. S. 665 Ft. & Exc. N. 706.7 Ft.

SUNSET HEIGHTS FIFTH
 (103) to (105) Block 1 Lots 1-3 R.J. King et al.
 (104) Block 1 Lot 11 E. Severin Schmidt et al.
 (102) Block 2 Lot 1 R.J. King et al.

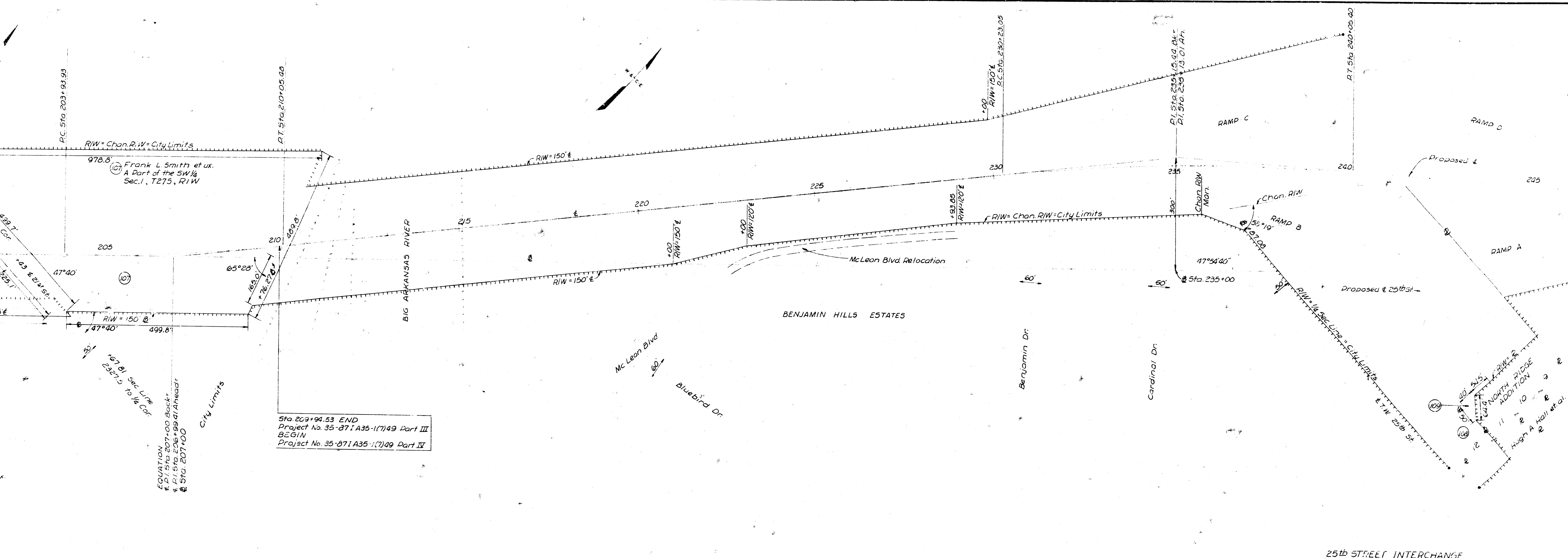
LOCATION
 E 1/4 Sec. 11, T275, R1W
 E 1/4 Sec. 11, T275, R1W
 E 1/4 Sec. 11, T275, R1W

PC 519, 176+04.15

PT. 519, 176+04.15

PT. 519, 176+04.15

PT. 519, 176+04.15



Sta 203+94.53 END
 Project No. 35-871 A35-1(7)49 Part III
 BEGIN
 Project No. 35-871 A35-1(7)49 Part II

25th STREET INTERCHANGE

PROPERTY OWNERSHIP MAP
 THE CITY OF WICHITA, KANSAS
 PROJECT NO. 35-871 A35-1(7)

<p>WILSON & COMPANY ENGINEERS ARCHITECTS</p>	<p>Salina, Mo.</p>
---	--------------------