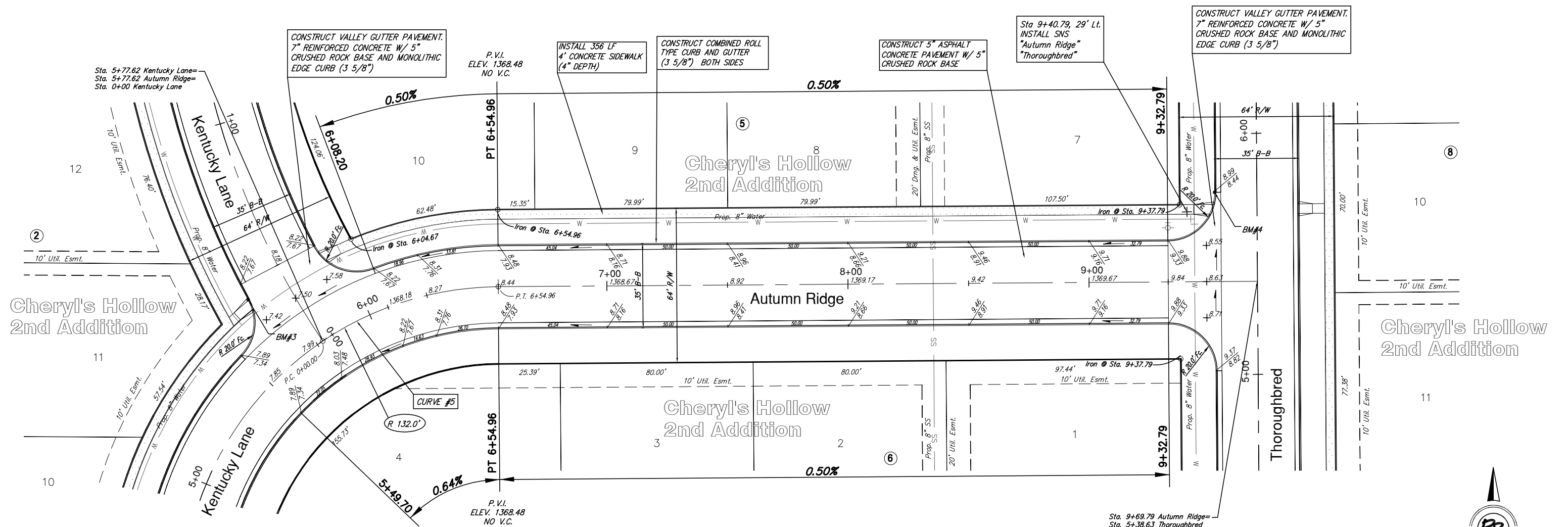


Subdivision Bench Marks

No.	Street and Station	From CL	Description	Elevation
3	Kentucky Lane, Sta. 5+64.68	32.25' Lt.	Northwest end of Curb Return at the Int. of Kentucky, Kentucky & Autumn Ridge.	
4	Thoroughbred, Sta. 5+75.63	17.50' Lt.	Northwest end of Curb Return at the Int. of Thoroughbred & Autumn Ridge.	



Cheryl's Hollow 2nd Addition

Cheryl's Hollow 2nd Addition

Cheryl's Hollow 2nd Addition

Cheryl's Hollow 2nd Addition



SCALE 1" = 20'
IRON = •

CURVE #5
Curve Data Based on Centerline
Rad. = 132' Delta = 89°13'35" Tangent = 130.23'
Arc = 205.56' L.C. = 185.41' Def/Fl. = 13.02195 Min.

Station	Arc	FACE CHORD LENGTHS		Defl.	T. Defl.
		8 Lt.	8 Rt.		
4+49.40	-	-	-	0°00'00"	0°00'00"
4+50.00	0.60'	0.71'	0.49'	0°07'49"	0°07'49"
4+75.00	25.00'	29.69'	20.24'	5°25'33"	5°33'22"
5+00.00	25.00'	29.69'	20.24'	5°25'33"	10°55'55"
5+25.00	25.00'	29.69'	20.24'	5°25'33"	16°21'28"
5+50.00	25.00'	29.69'	20.24'	5°25'33"	21°47'01"
5+75.00	25.00'	29.69'	20.24'	5°25'33"	27°12'34"
6+00.00	25.00'	29.69'	20.24'	5°25'33"	32°38'07"
6+25.00	25.00'	29.69'	20.24'	5°25'33"	38°03'40"
6+54.96	29.96'	35.56'	24.23'	6°30'08"	44°33'48"

NOTE: ROLL TYPE CURB AND GUTTER TO BE CONSTRUCTED ALONG PAVEMENT DEPICTED ON THIS SHEET

Cheryl's Hollow 2nd, Phase 1
Kentucky Lane/Autumn Ridge
WICHITA, KANSAS

Ruggles & Bohm, P.A.
Engineering, Surveying, Land Planning

924 North Main
Wichita, Kansas 67203
www.rbkansas.com

(316) 264-8008
(316) 264-4621 fax
E-mail: info@rbkansas.com

DESIGN: KWL	SHEET
DRAWN: MLP	8
REVIEW:	OF
UTILITY:	45
DRAWING FILE: base {Kent4-Aut}	DATE: Aug. 7, 2007
PROJECT NUMBER: 472-84544	