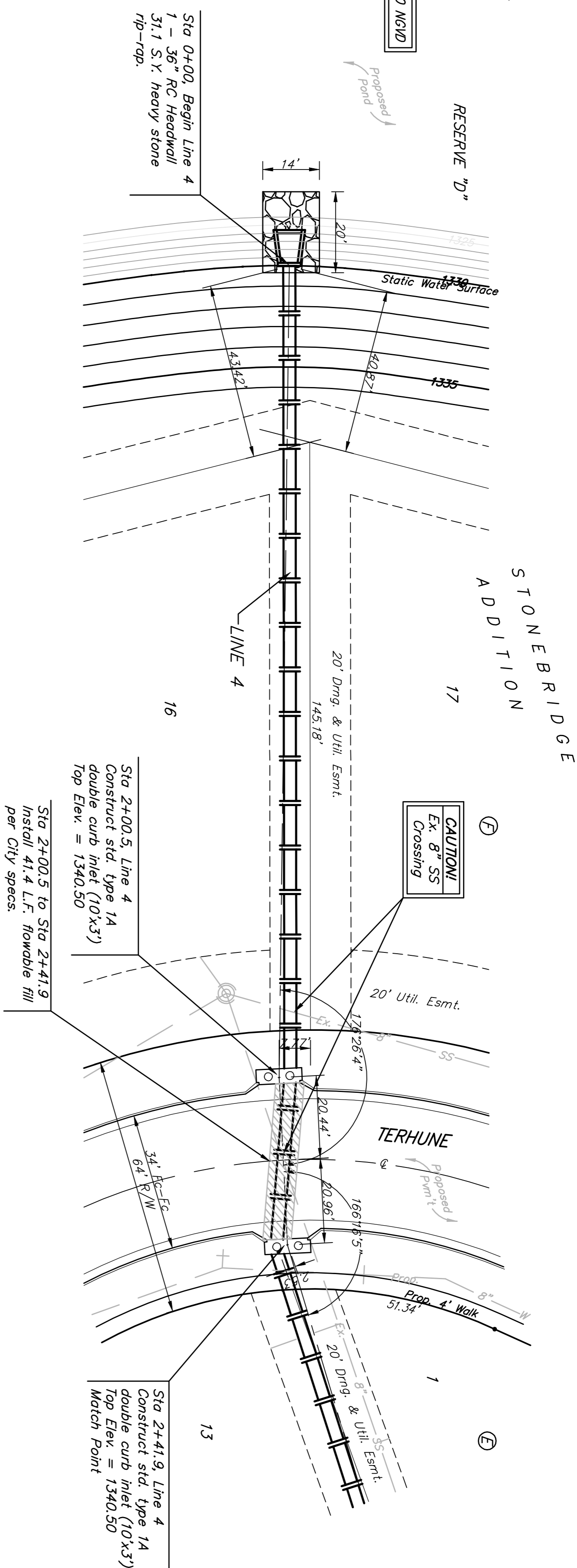


BENCHMARK:  
 BM #1: "C" CUT, TOP OF CURB, S. SIDE OF  
 SUNDANCE AS DEDICATED IN SAVANNA AT  
 CASTLE ROCK RANCH 7TH ADDITION, 25.4' W  
 OF THE WEST LINE OF THE SET/4 OF SEC.  
 12, TWP. 27-S, R-2-E  
 ELEV. = 1347.33 NGVD29

BM #2: 60d NAIL IN HIGH LINE POLE, 30'  
 SOUTH OF ST/4 COR., SEC. 12, TWP. 27-S,  
 R-2-E  
 ELEV. = 1348.58 NGVD29 (PER COUNTY  
 RECORD)

Static WS elev. = 1330.0 NGVD

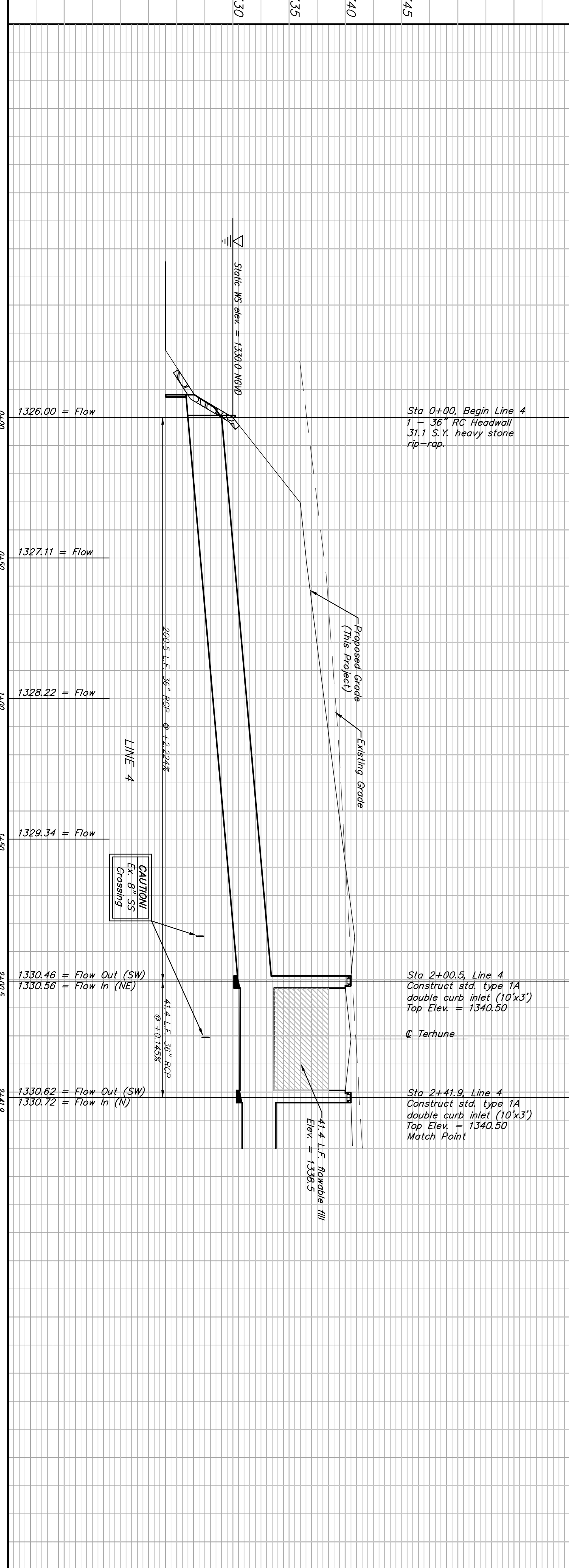


Scale: 1" = 20' Horizontal  
 1" = 5' Vertical  
 ● = Iron

Sta 0+00, Begin Line 4  
 1 - 36" RC Headwall  
 31.1 S.Y. heavy stone  
 rip-rap.

Sta 2+00.5, Line 4  
 Construct std. type 1A  
 double curb inlet (10'x3')  
 Top Elev. = 1340.50

Sta 2+41.9, Line 4  
 Construct std. type 1A  
 double curb inlet (10'x3')  
 Top Elev. = 1340.50  
 Match Point



<b>STONEBRIDGE ADDITION</b> <b>LINE 4</b> STORM WATER SEWER IMPROVEMENTS	
Baughman Company, P.A. 310 S.W. 8th St., Suite 200, Ft. Lauderdale, FL 33304 ENGINEERING   SURVEYING   PLANNING   LANDSCAPE ARCHITECTURE	DESIGN: TMS ATD DATE: 09/07 APPROVED: [Signature] SCALE: Noted SHEET: <b>6 OF 51</b>
PROJECT NUMBER: 46844395 REVISIONS:	DRAWN: TMS DATE: 09/07 APPROVED: [Signature]