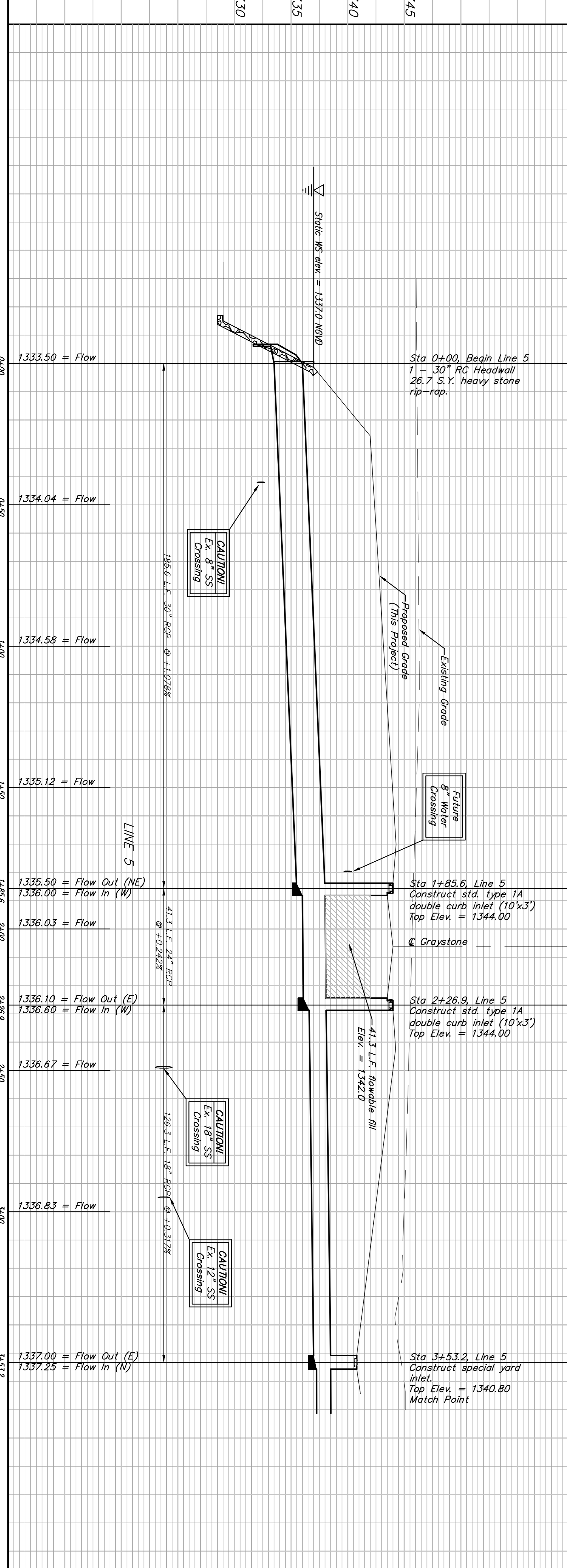
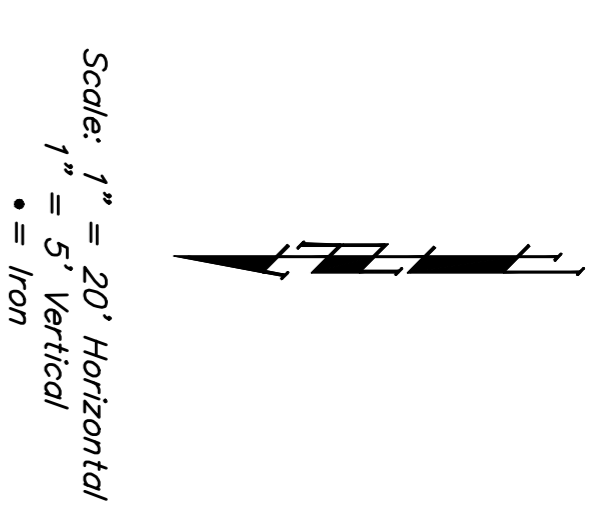
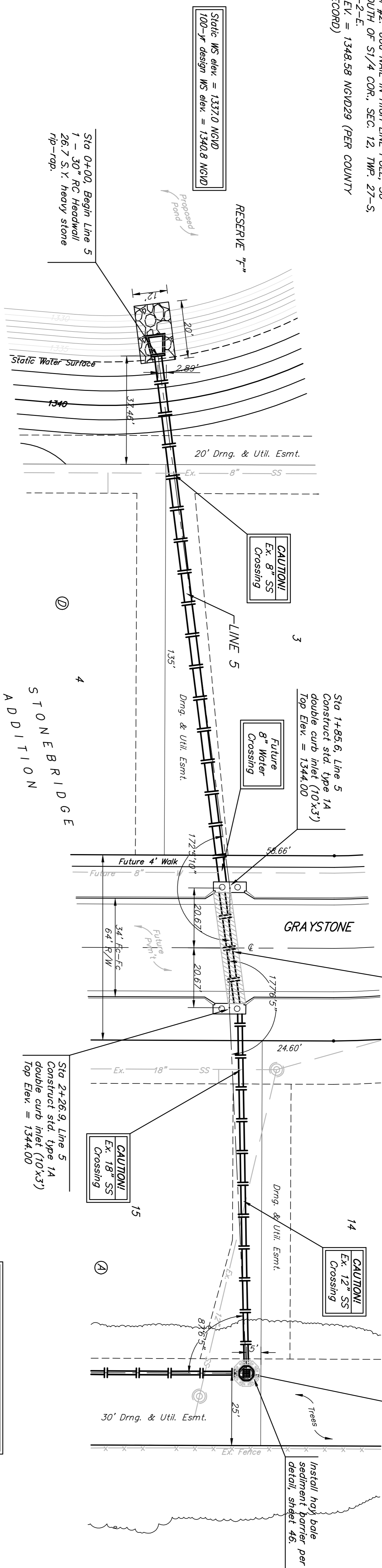


BENCHMARK:
 BM #1: "CUT, TOP OF CURB, S. SIDE OF
 SOUNDANCE AS DEDICATED IN SAVANNAH AT
 CASTLE ROCK RANCH 7TH ADDITION, 25'± W
 OF THE WEST LINE OF THE S1/4 OF SEC.
 12, TWP. 27-S, R-2-E
 ELEV. = 1347.33 NGVD29

BM #2: 604 NAIL IN HIGH LINE POLE, 30'
 SOUTH OF S1/4 COR., SEC. 12, TWP. 27-S,
 R-2-E
 ELEV. = 1348.58 NGVD29 (PER COUNTY
 RECORD)



Baughman
LINE 5
 STORM WATER SEWER IMPROVEMENTS

PROJECT NUMBER: 468-44395
 DESIGN: TMS
 DATE: 09/07

SCALE: None
 SHEET: 10 OF 51

06-07-2009

Trees shall be protected from damage during storm sewer construction.