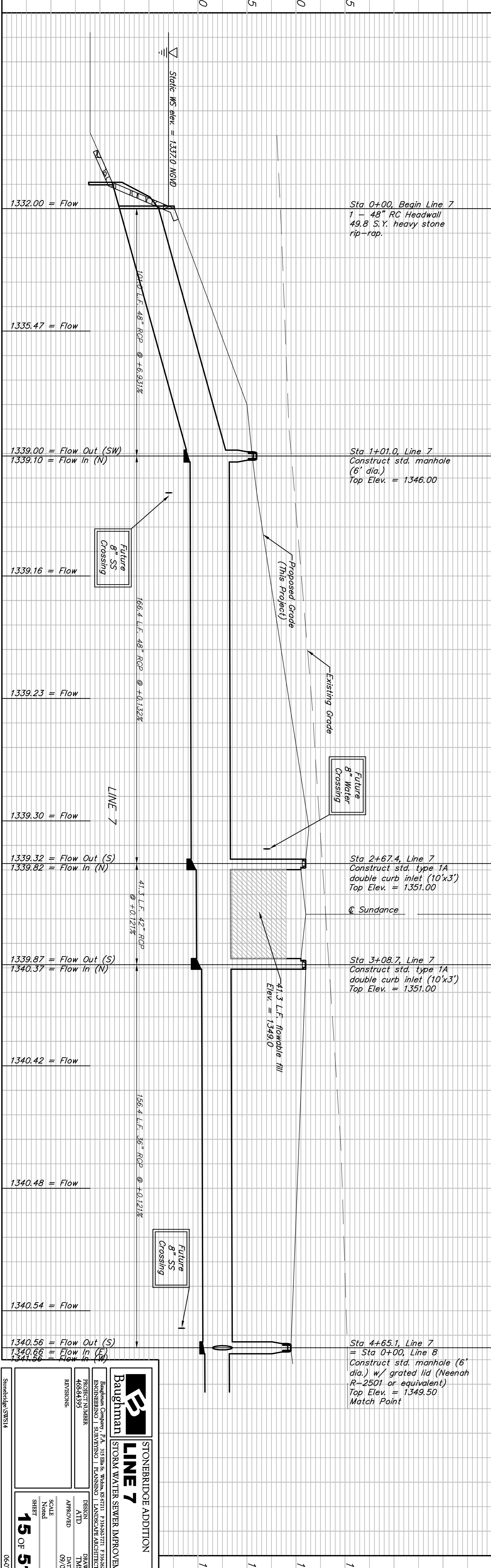
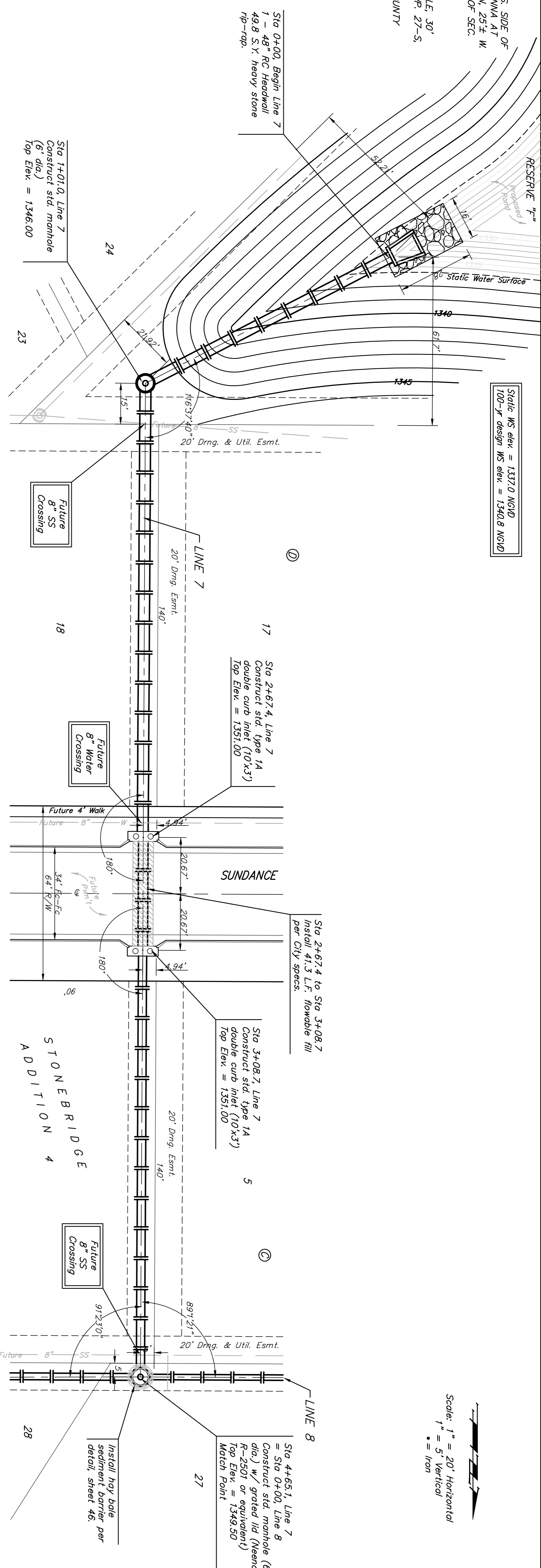


BENCHMARK:
 BM #1: "CUT, TOP OF CURB, S. SIDE OF SUNDANCE AS DEDICATED IN SAVANNAH AT CASTLE ROCK RANCH 7TH ADDITION, 25'E. W. OF THE WEST LINE OF THE SE1/4 OF SEC. 12, TWP. 27-S, R-2-E. ELEV. = 1347.33 NGVD29

BM #2: 60d NAIL IN HIGH LINE POLE, 30' SOUTH OF ST/4 COR., SEC. 12, TWP. 27-S, R-2-E. ELEV. = 1348.58 NGVD29 (PER COUNTY RECORD)



Baughman	
STONEBRIDGE ADDITION	
LINE 7	
STORM WATER SEWER IMPROVEMENTS	
PROJECT NUMBER 46844395	DRAWN TMS
ENGINEERING SURVEYING PLANNING LANDSCAPE ARCHITECTURE	DATE 09/07
REVISIONS	APPROVED
	SCALE None
	SHEET 15 OF 51
	DATE 06-07-2014

Scale: 1" = 20' Horizontal
 1" = 5' Vertical
 ● = Iron