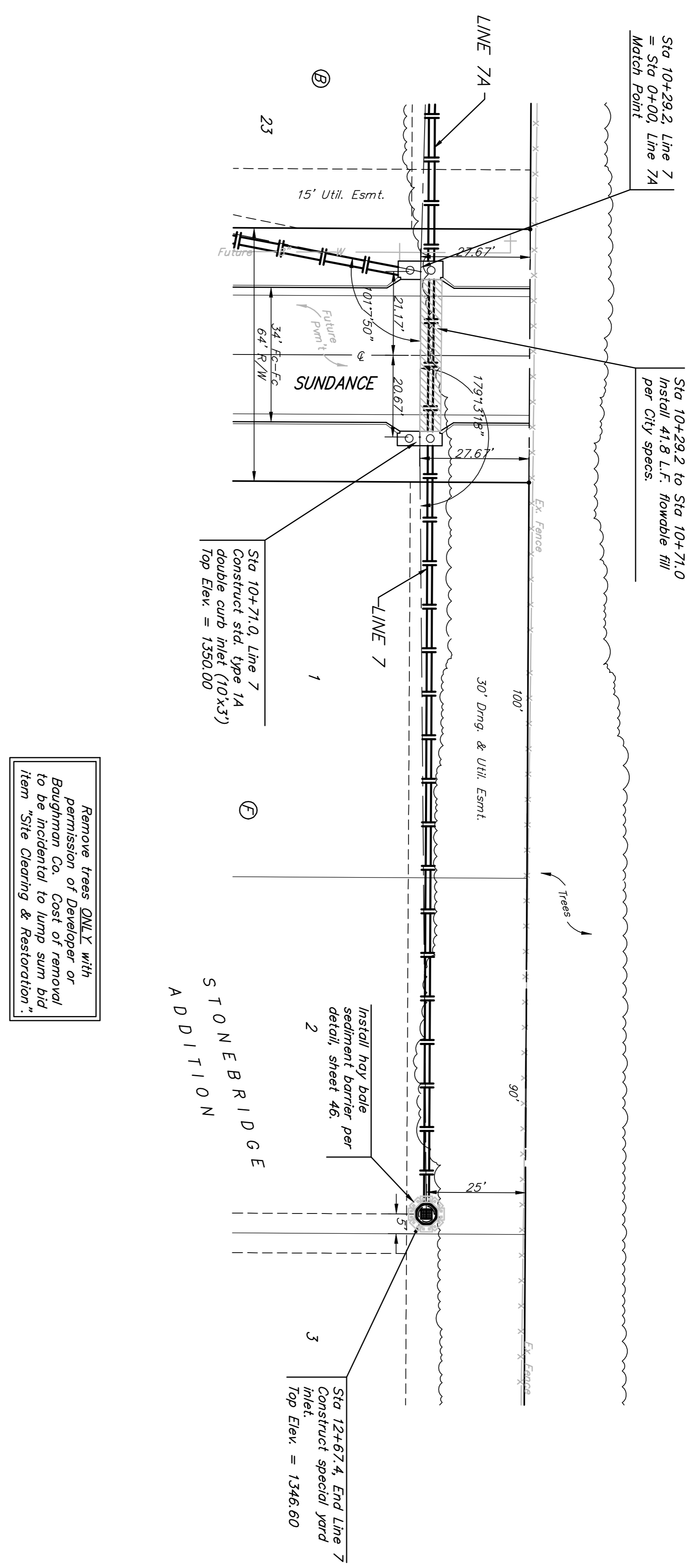


BENCHMARK:
 BM #1: "CUT, TOP OF CURB, S. SIDE OF SUNDANCE AS DEDICATED IN SAVANNA AT CASTLE ROCK RANCH 7TH ADDITION, 25'E. W. OF THE WEST LINE OF THE SE1/4 OF SEC. 12, TWP. 27-S, R-2-E. ELEV. = 1347.33 NGVD29

BM #2: 604 NAIL IN HIGH LINE POLE, 30' SOUTH OF ST/4 COR., SEC. 12, TWP. 27-S, R-2-E. ELEV. = 1348.58 NGVD29 (PER COUNTY RECORD)



1350	1341.79 = Flow Out (NW) 1341.89 = Flow In (S) 1342.29 = Flow In (N)	Sta 10+29.2, Line 7 = Sta 0+00, Line 7A Match Point
1345	1341.97 = Flow	41.8 L.F. 18" RCP @ +0.382%
1340	1342.05 = Flow Out (N) 1342.15 = Flow In (S)	Sta 10+71.0, Line 7 Construct std. type 1A double curb inlet (10'x3') Top Elev. = 1350.00
1335	1342.26 = Flow	41.8 L.F. flowable fill Elev. = 1348.0
	1342.45 = Flow	198.4 L.F. 15" RCP @ +0.382%
	1342.64 = Flow	LINE 7
	1342.83 = Flow	Existing Grade Proposed Grade (This Project)
	1342.90 = Flow	Sta 12+67.4, End Line 7 Construct special yard inlet. Top Elev. = 1346.60

Baughman
LINE 7
 STORM WATER SEWER IMPROVEMENTS

PROJECT NUMBER: 46844395
 DATE: 09/07

DESIGN: TMS
 APPROVED: 09/07

SCALE: None
 SHEET: 17 OF 51

06-07-ES98

Scale: 1" = 20' Horizontal
 1" = 5' Vertical
 ● = Iron