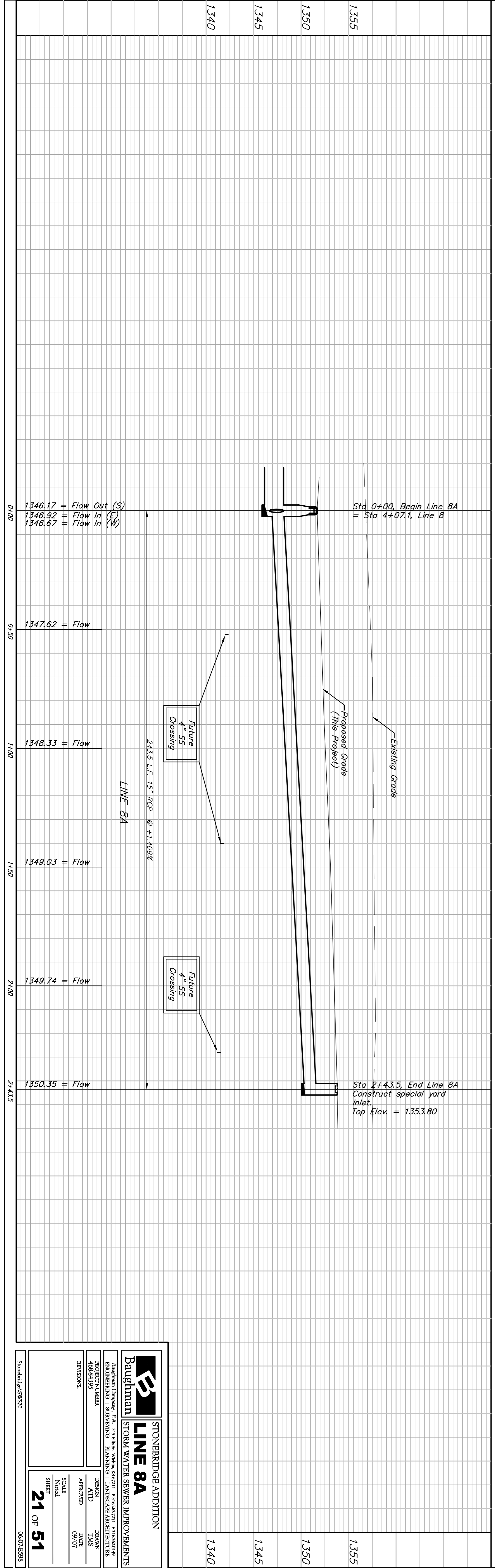
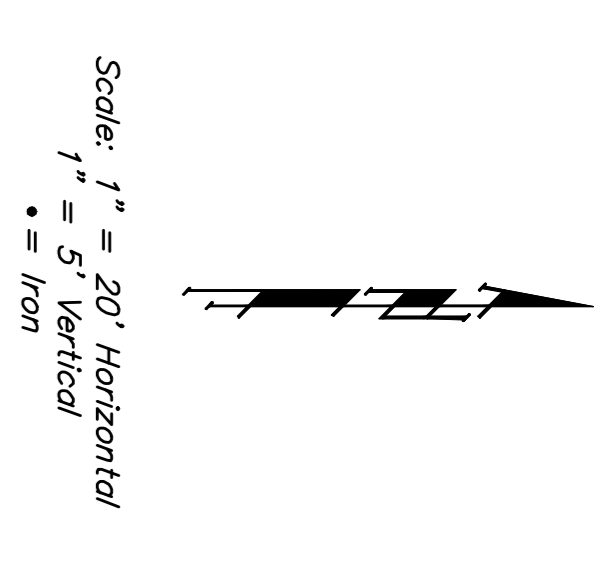
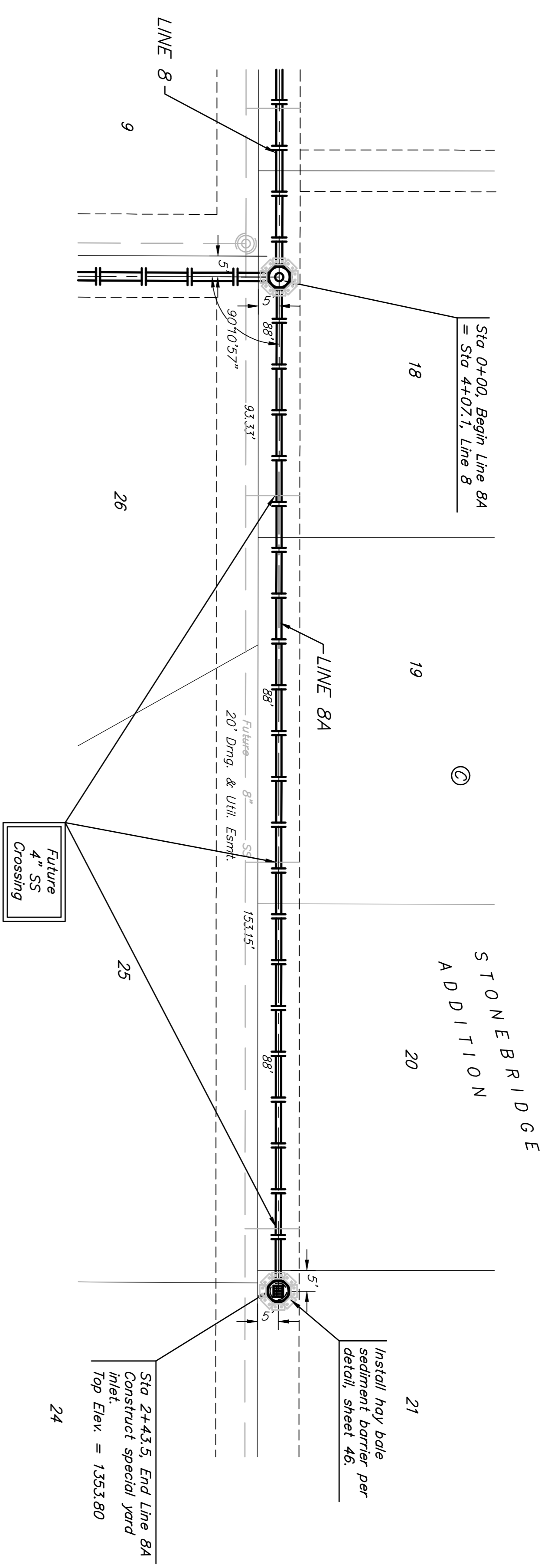


BENCHMARK:
 BM #1: "C" CUT, TOP OF CURB, S. SIDE OF
 SAUNDANCE AS DEDICATED IN SAVANNA AT
 CASTLE ROCK RANCH 7TH ADDITION, 25'E. W.
 OF THE WEST LINE OF THE SE1/4 OF SEC.
 12, TWP. 27-S, R-2-E.
 ELEV. = 1347.33 NGVD29

BM #2: 604 NAIL IN HIGH LINE POLE, 30'
 SOUTH OF ST/4 COR., SEC. 12, TWP. 27-S,
 R-2-E.
 ELEV. = 1348.58 NGVD29 (PER COUNTY
 RECORD)



1346.17 = Flow Out (S)
 1346.92 = Flow In (E)
 1346.67 = Flow In (W)

1347.62 = Flow

1348.33 = Flow

1349.03 = Flow

1349.74 = Flow

1350.35 = Flow

		STONEBRIDGE ADDITION LINE 8A STORM WATER SEWER IMPROVEMENTS	
Baughman Company, P.A. 315 Elm St., Suite 200, Philadelphia, PA 19106 ENGINEERING SURVEYING PLANNING LANDSCAPE ARCHITECTURE		PROJECT NUMBER: 468-44395 REVISIONS:	
DESIGN: ATD APPROVED: 09/07		DRAWN: TMS DATE: 09/07	
SCALE: None		SHEET: 21 OF 51	
Stonebridge, SWS20		06.07.ES98	