

BENCH MARK: Square in top of curb located at west end of northwest return at 30th and Rock Road. Elevation = 211.59 City Datum.

STAKING NOTES: THE CONTROL POINTS FOR CURB INLETS ARE LOCATED AT THE CENTER OF THE INLET AT THE "BACK OF CURB" ON THE INLET CASTING (SEE INLET DETAIL). DROP INLET CONTROL POINTS ARE LOCATED AT THE CENTER OF THE INLET BOX. HORIZONTAL DIMENSIONS ARE ALSO LOCATED AT THE INLET CONTROL POINTS.

COORDINATE POINT TABLE

POINT	DESCRIPTION	NORTHING	EASTING
001	PROP. COR	6428.575	8773.419
002	PROP. COR	6449.232	8272.702
003	PROP. COR	6478.345	9371.594
004	PROP. COR	6495.580	9546.435
005	PROP. COR	6590.466	8764.294
006	PROP. COR	7033.423	9363.423
007	PROP. COR	5680.544	9543.726
008	PROP. COR	6760.922	9537.172
100	CURB INLET	6446.884	8791.450
101	CURB INLET	6529.426	8790.110
102	DROP INLET	6530.144	8834.337
103	CURB INLET	6729.014	8788.870
104	DROP INLET	6729.483	8814.535
105	CURB INLET	6835.395	8785.144
200	MANHOLE	6464.851	9089.344
201	CURB INLET	6313.693	9103.252
202	CURB INLET	6633.678	9101.392
203	CURB INLET	6753.803	9108.530
204	CURB INLET	6873.789	9106.670

GENERAL NOTES

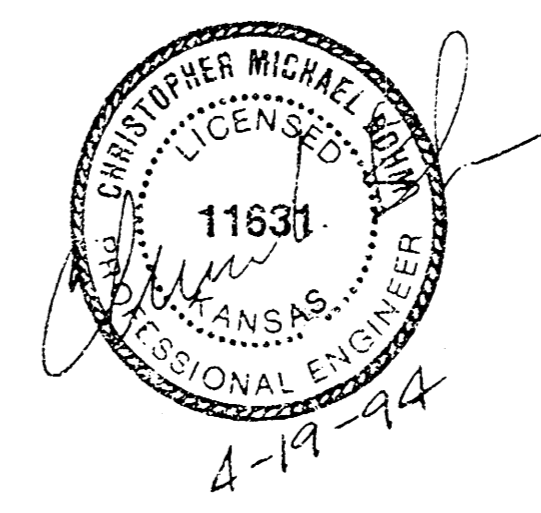
- Underground utility service lines and overhead utility pole lines are to be adjusted as necessary by others prior to construction unless the plans specifically call for their adjustment be the Contractor or unless the plans specifically identify a utility to be adjusted by its owner during construction. Existing utilities and their location, as shown on the plans, represent the best information obtainable for design. Location information has been obtained from the various utility companies and is either from company record drawings or company provided field locations. The Contractor will be required to work around existing utilities within the right-of-way which do not conflict with proposed construction.
- Rubble from the removal of miscellaneous structures and excess excavation which is to be wasted shall be disposed of on sites to be provided by the Contractor. These sites shall be approved by the Engineer as to suitability, appearance and site location. Locations that, in the opinion of the Engineer, will leave an unsightly appearance will not be approved.

All disposal sites must be approved by the Kansas Department of Health and Environment. Material either stockpiled or disposed of in a flood plain would require a Kansas State Board of Agriculture permit. Any material dumped in waters of the United States or wetlands is subject to U.S. Corps. of Engineers permitting regulations. Any material buried or stockpiled beyond approved construction limits would require additional archaeological investigations unless buried in a previously approved borrow location.
- The Contractor shall be responsible for preserving property irons. The Contractor will be required to re-establish any property irons which are damaged or destroyed by his construction operations. Such irons shall be re-established by a licensed land surveyor or a licensed professional engineer in accordance with state laws.

INSPECTION AND TESTING FOR THIS PROJECT TO BE PROVIDED BY A LICENSED CONSULTING ENGINEERING FIRM UNDER CONTRACT WITH THE OWNER/DEVELOPER. SAID INSPECTION TO BE IN ACCORDANCE WITH THE CITY OF WICHITA STANDARD CONSTRUCTION ENGINEERING PRACTICES AND CERTIFIED BY A LICENSED PROFESSIONAL ENGINEER. NO WORK SHALL BE PERFORMED IN DEDICATED EASEMENTS OR PUBLIC RIGHT-OF-WAY BY THE CONTRACTOR WITHOUT SUCH INSPECTIONS, NOR SHALL ANY WORK BE COMMENCED IN DEDICATED EASEMENTS OR PUBLIC RIGHT-OF-WAY WITHOUT WRITTEN AUTHORIZATION BY THE CITY ENGINEER.

APPROVED AS NOTED
By CITY ENGINEER OF WICHITA

Sanitary Sewers _____
Storm Sewers VRH 4/19/94
Driveway Approaches _____
Water Mains _____
Paving _____



PRIVATE STORM WATER SEWER EXTENSION
SERVING LOT 1, BLOCK 4, COTTONWOOD SQUARE

SRB 824 NORTH MAIN 316-632-7754
WICHITA, KANSAS 67211 FAX 264-4621

SAVOY, RUGGLES & BOHM, P.A.
ENGINEERING & SURVEYING

PROJECT NUMBER
458PPS (607861)

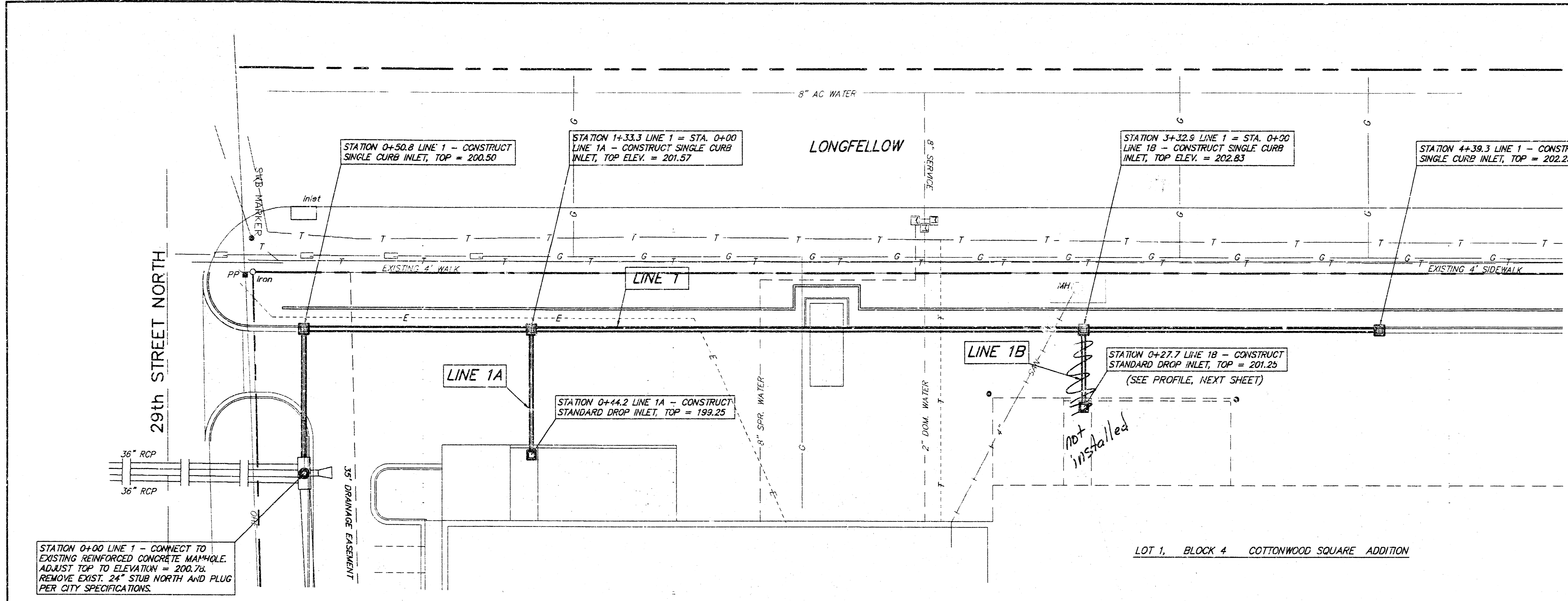
DRAWN	DESIGN	REVIEW	DATE	UTILITY	SRB JOB
C. Bohm	C. Bohm	T.C.R.	4-9-94		136E

DATE: 4-19-94

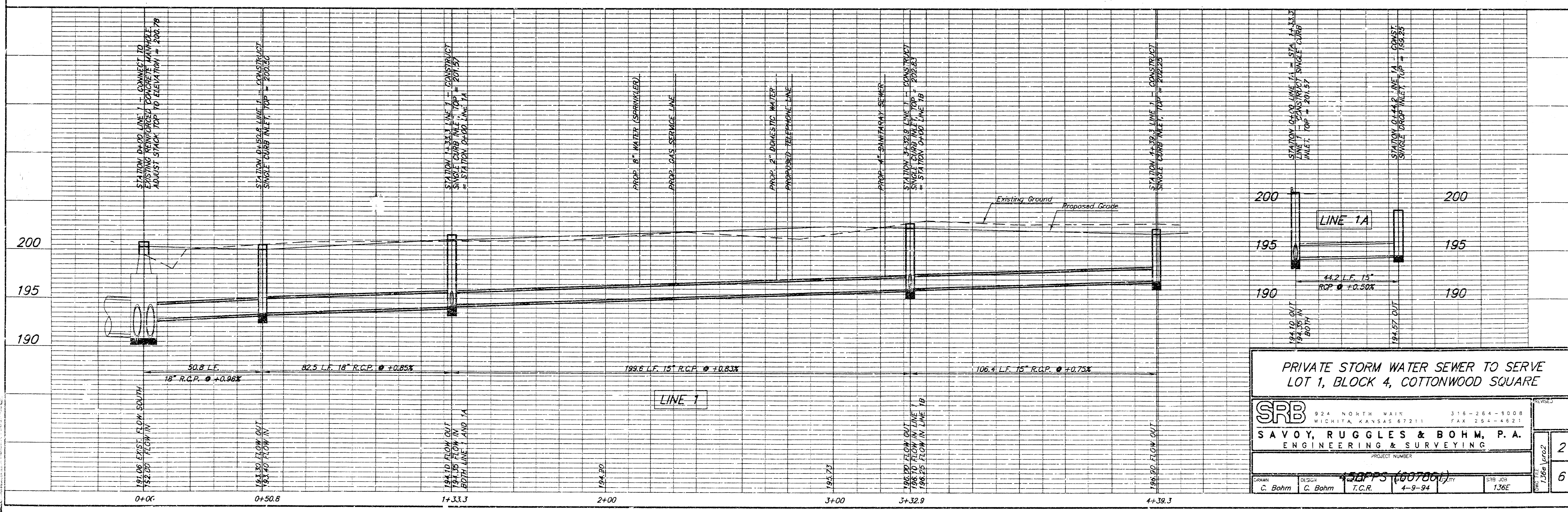


Scale: 1" = 20' Plan
1" = 5' Profile (Vert.)
o = Iron

BENCH MARK: Square in top of curb located at west end of northwest return of 30th and Rock Road. Elevation = 211.59 City Datum.



LOT 1, BLOCK 4 COTTONWOOD SQUARE ADDITION



PRIVATE STORM WATER SEWER TO SERVE LOT 1, BLOCK 4, COTTONWOOD SQUARE

SRB SAVOY, RUGGLES & BOHM, P.A. ENGINEERING & SURVEYING

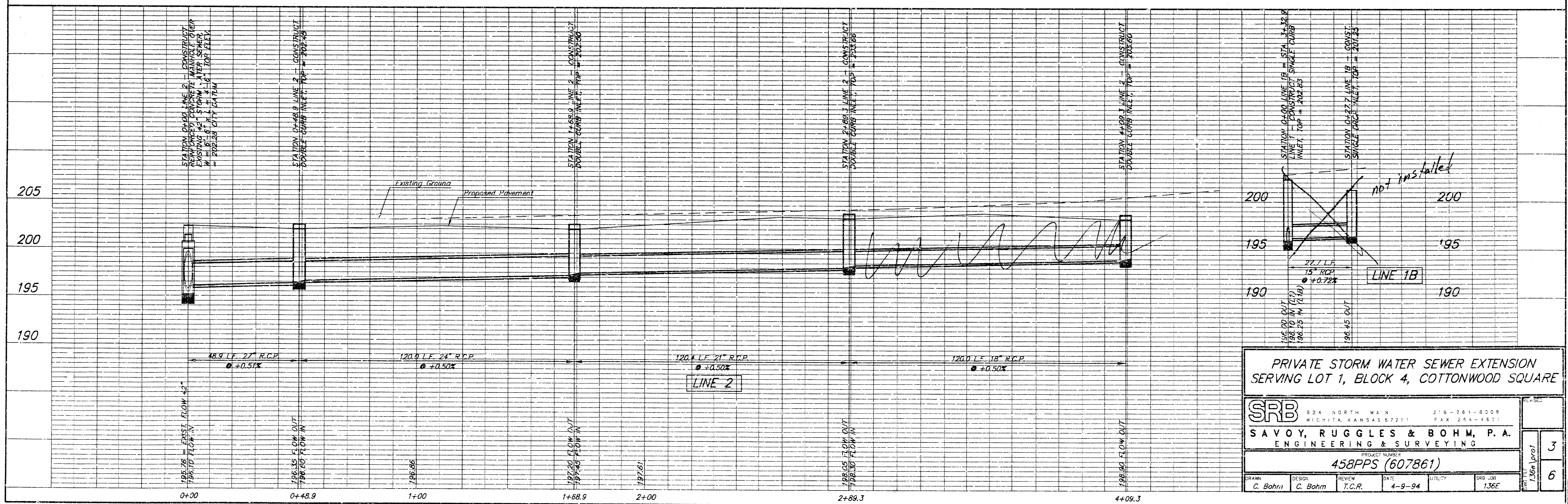
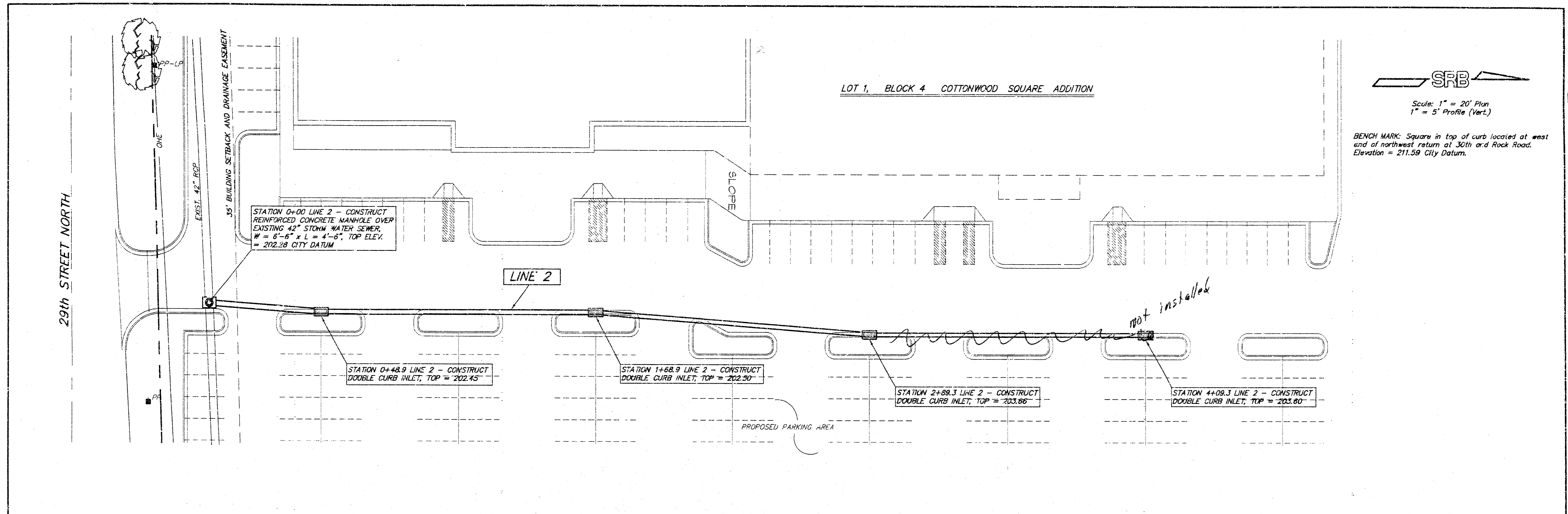
924 NORTH MAIN WICHITA, KANSAS 67211 316-264-9008 FAX 264-4621

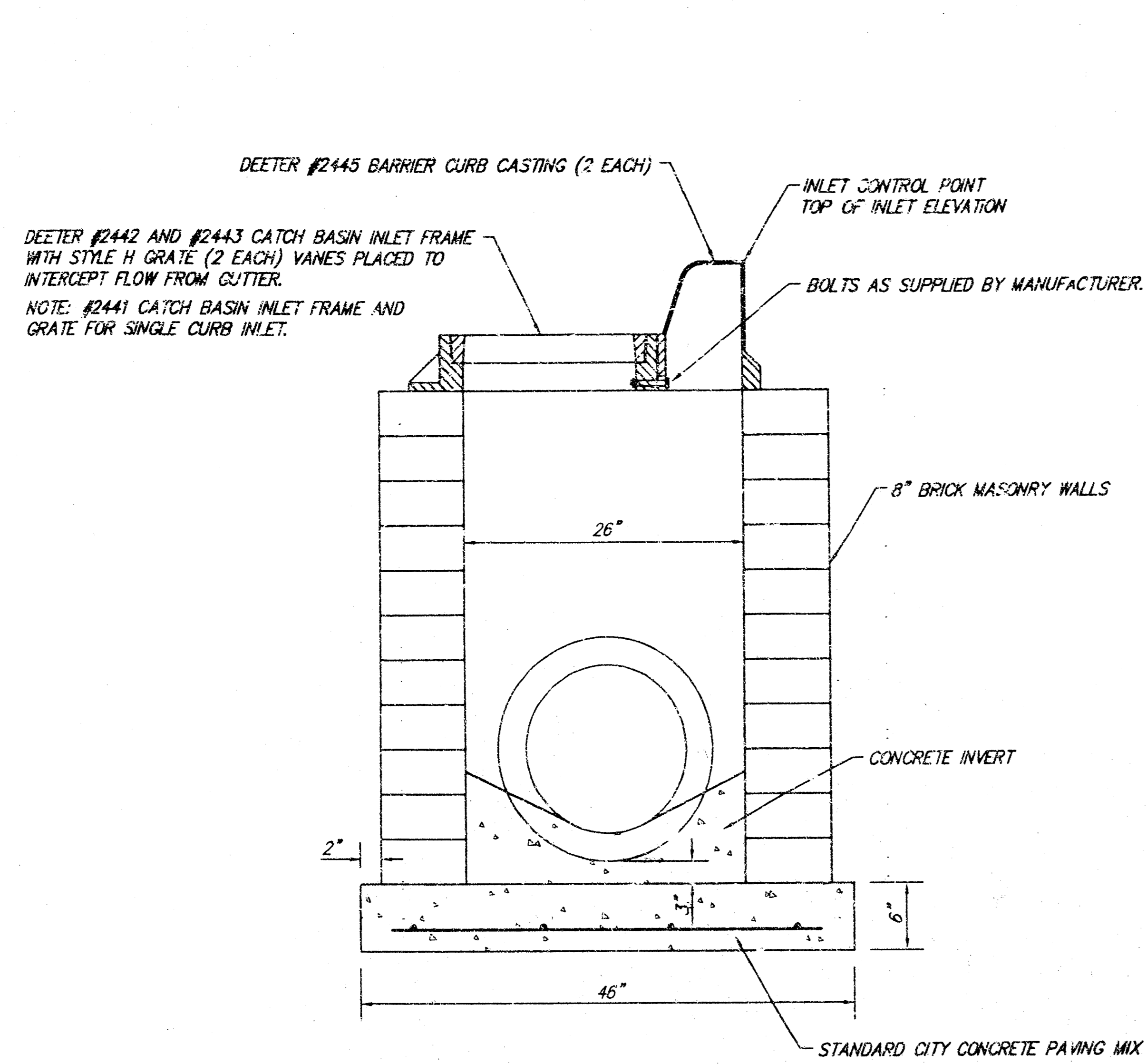
PROJECT NUMBER: 53PPS (007801)

DATE: 4-9-94

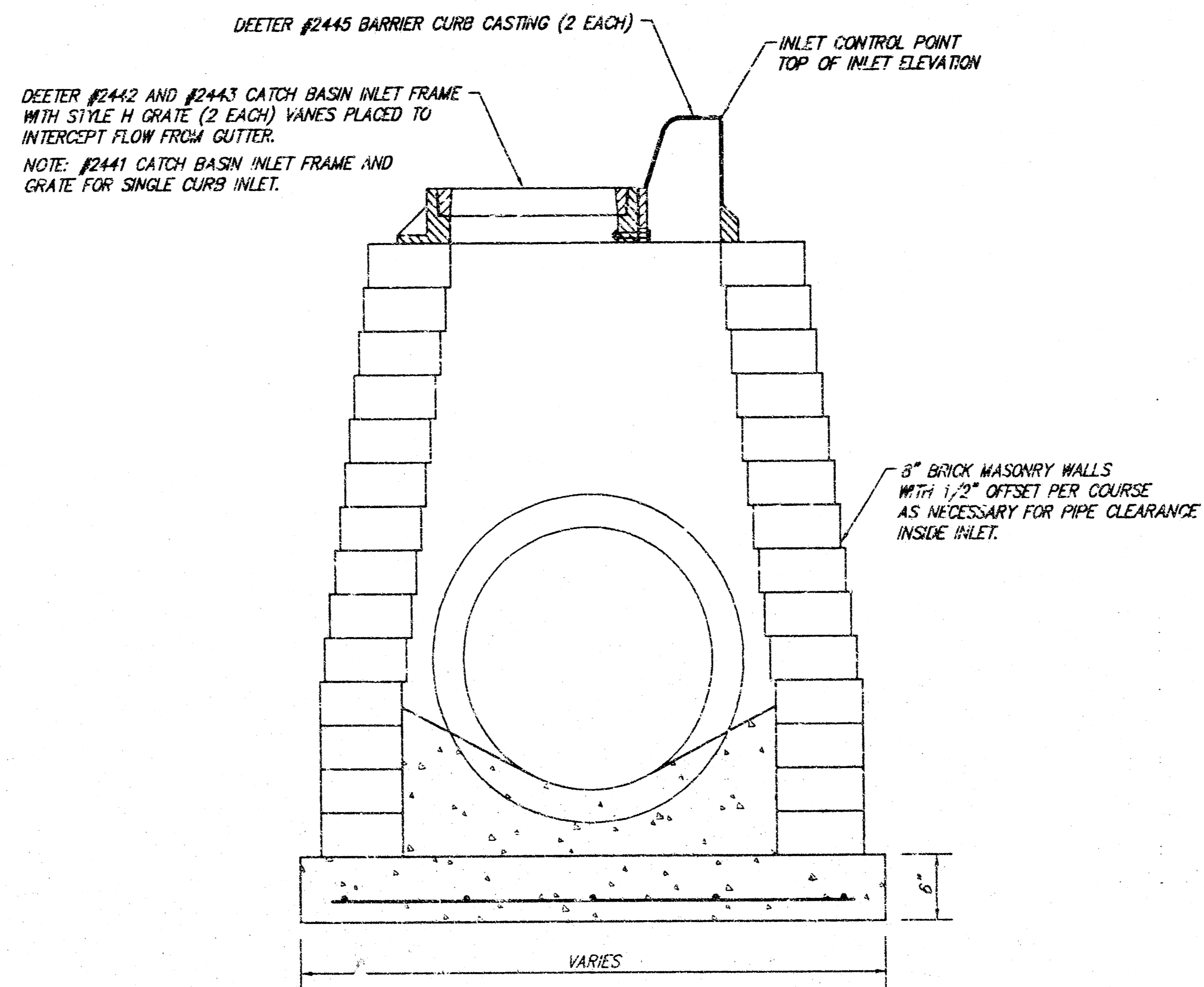
DRAWN: C. Bohm, DESIGNED: C. Bohm, T.C.R. 1,36E

REVISIONS: 2, 6





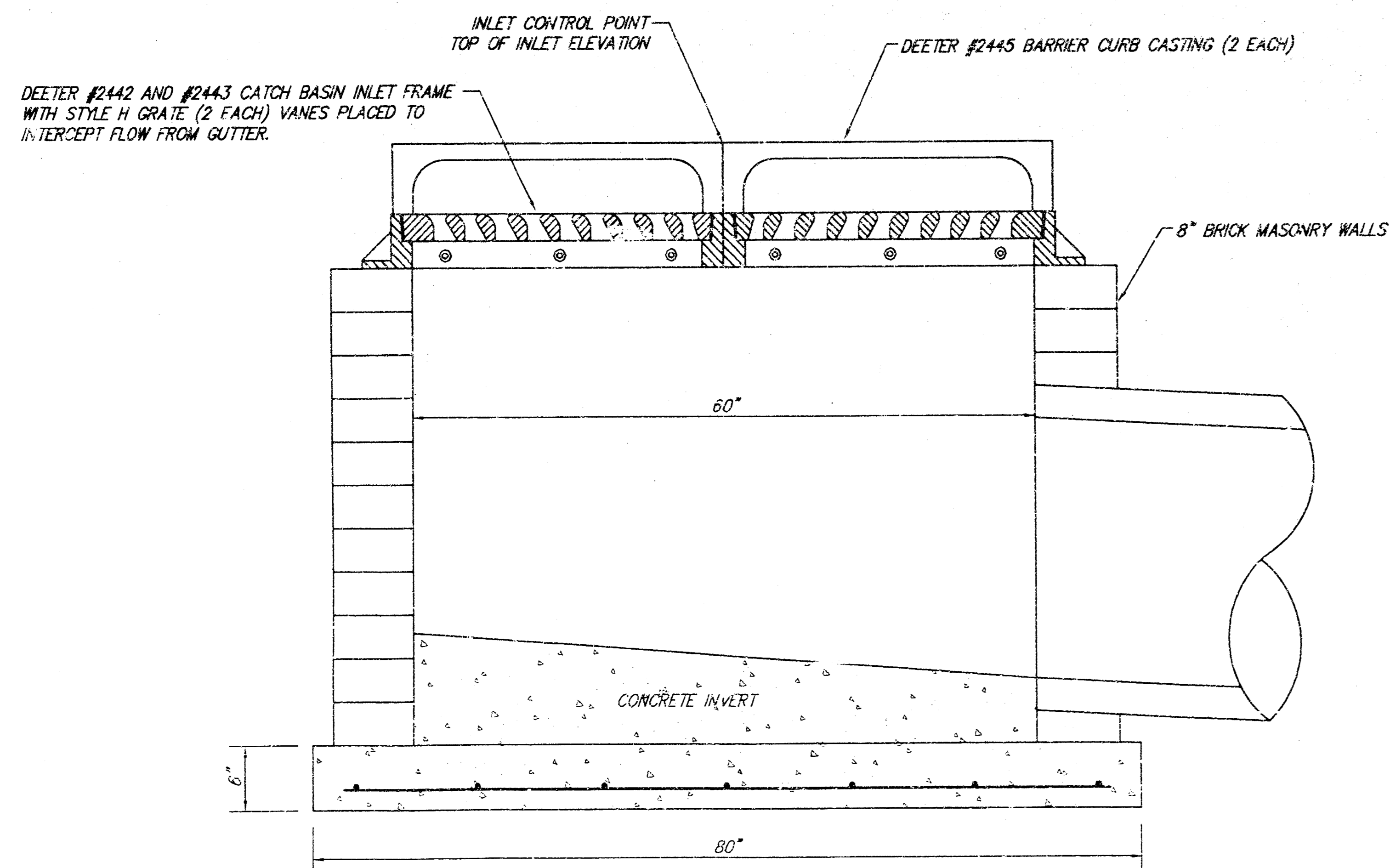
SIDE VIEW (15"-18" PIPES)



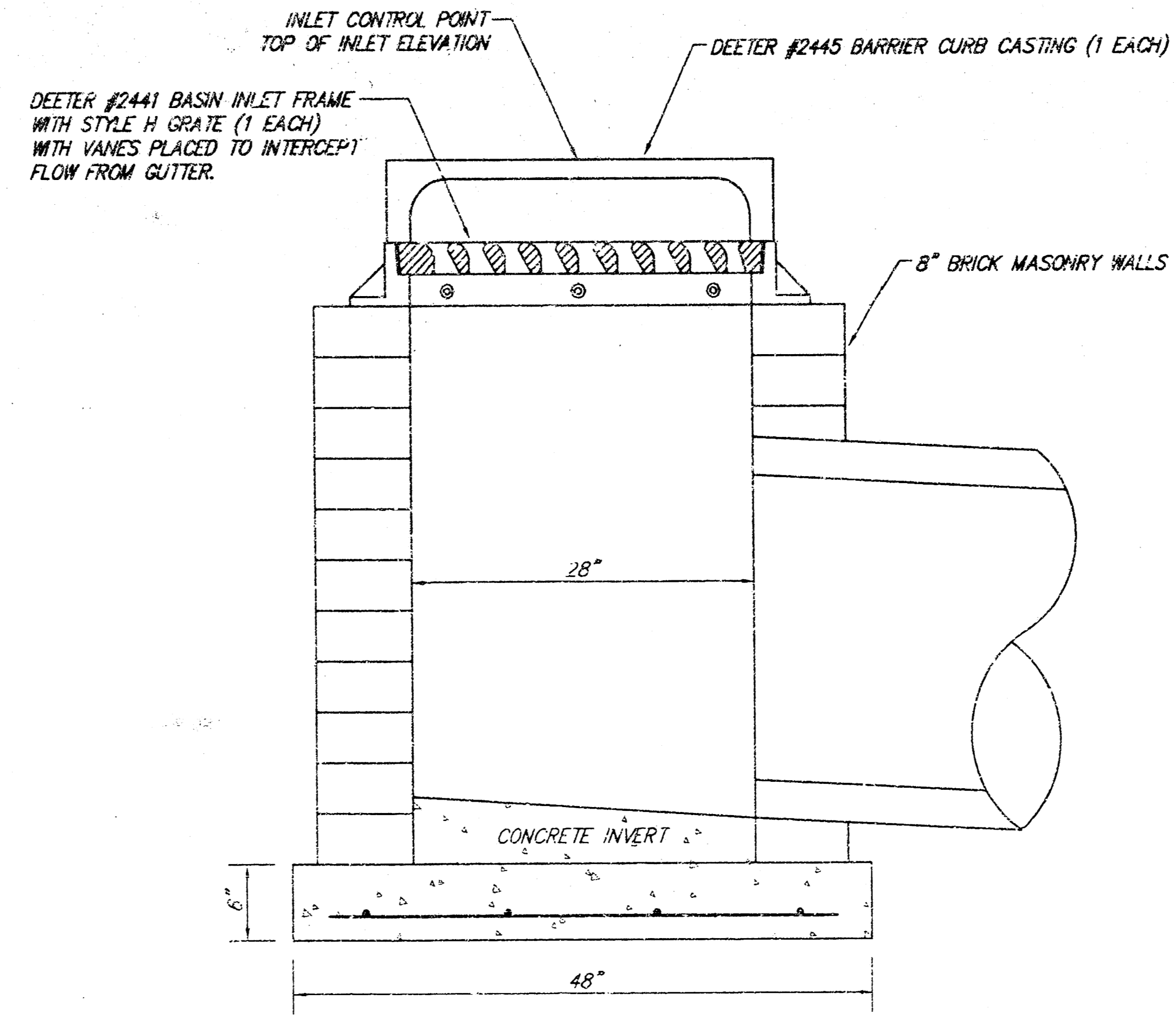
SIDE VIEW (21"-27" PIPES)

GENERAL NOTES:

1. MORTAR USED IN MASONRY CONSTRUCTION SHALL CONTAIN 8 SACKS OF CEMENT PER CUBIC YARD. CONCRETE USED IN MANHOLE WALLS AND BASES SHALL CONFORM TO THE REQUIREMENTS FOR CONCRETE PAVEMENT CONSTRUCTION AS SPECIFIED IN THE CITY STANDARD PAVING SPECIFICATIONS, USING CITY CONCRETE PAVEMENT MIX WITHOUT AIR ENTRAINING ADMIXTURE. COMPLETED MANHOLE SHALL BE WITHOUT LEAKS AND WATER TIGHT.
2. THE FLOORS OF ALL MANHOLES SHALL BE SHAPED WITH FLOW CHANNELS SUCH THAT THE MANHOLES WILL BE SELF CLEANING. USING 8-SACK SAND MIX CONCRETE. FLOW CHANNELS SHALL BE FORMED TO MATCH THE BOTTOM HALVES OF THE INFLOWING PIPES AND THE OUTFLOWING PIPE. MANHOLE FLOORS SHALL HAVE SLOPES OF 3 INCHES PER FOOT IN THE AREAS OUTSIDE OF THE FLOW CHANNELS SLOPED TOWARD THE FLOW CHANNELS.
3. THE ENDS OF ALL PIPES IN MANHOLES SHALL BE CUT OFF FLUSH WITH THE INSIDE FACE OF MANHOLE WALL.

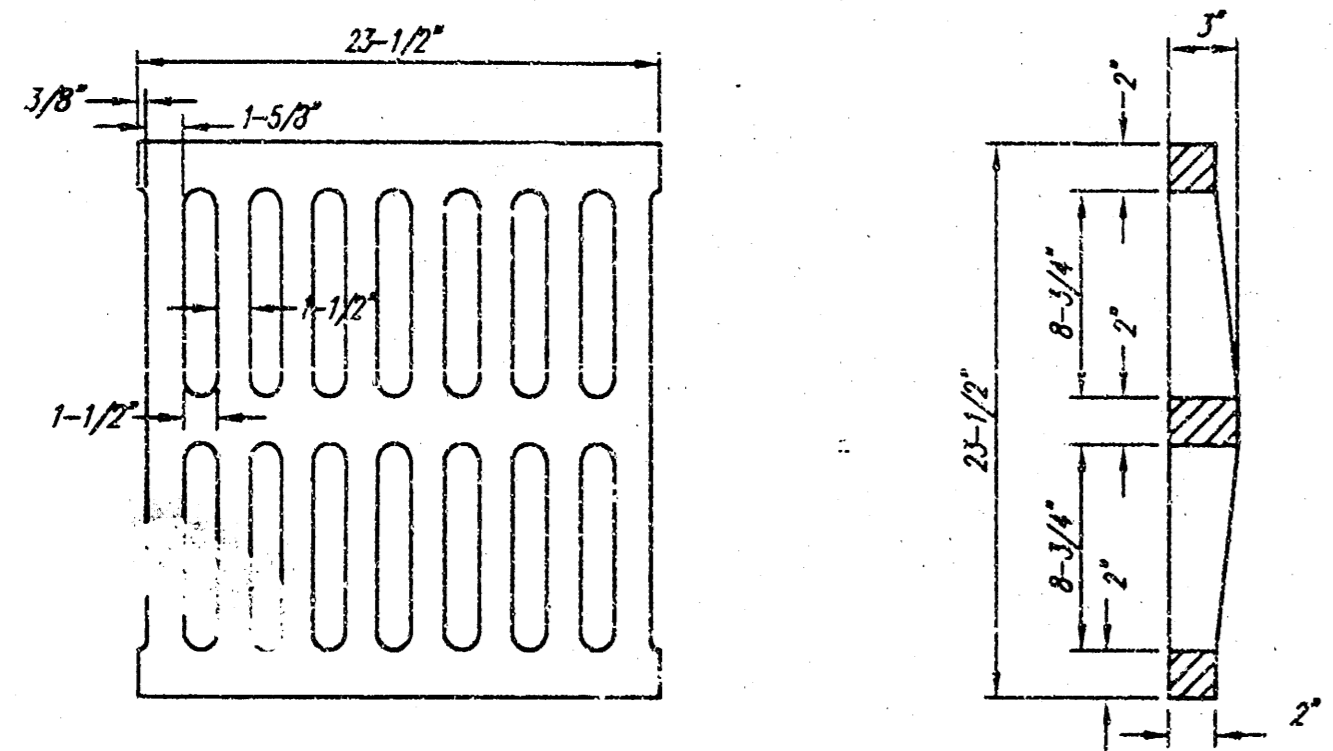
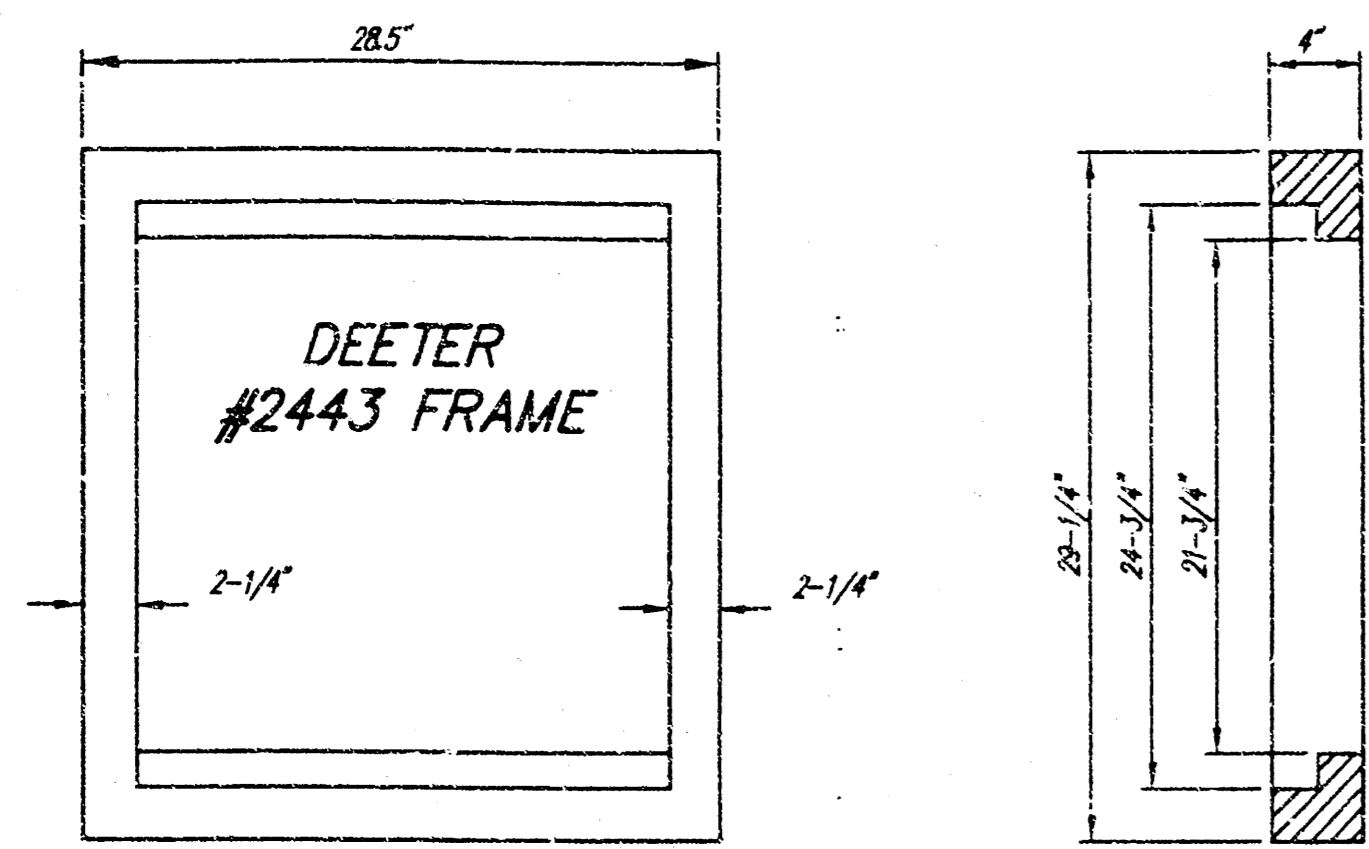


FRONT VIEW - DOUBLE CURB INLET

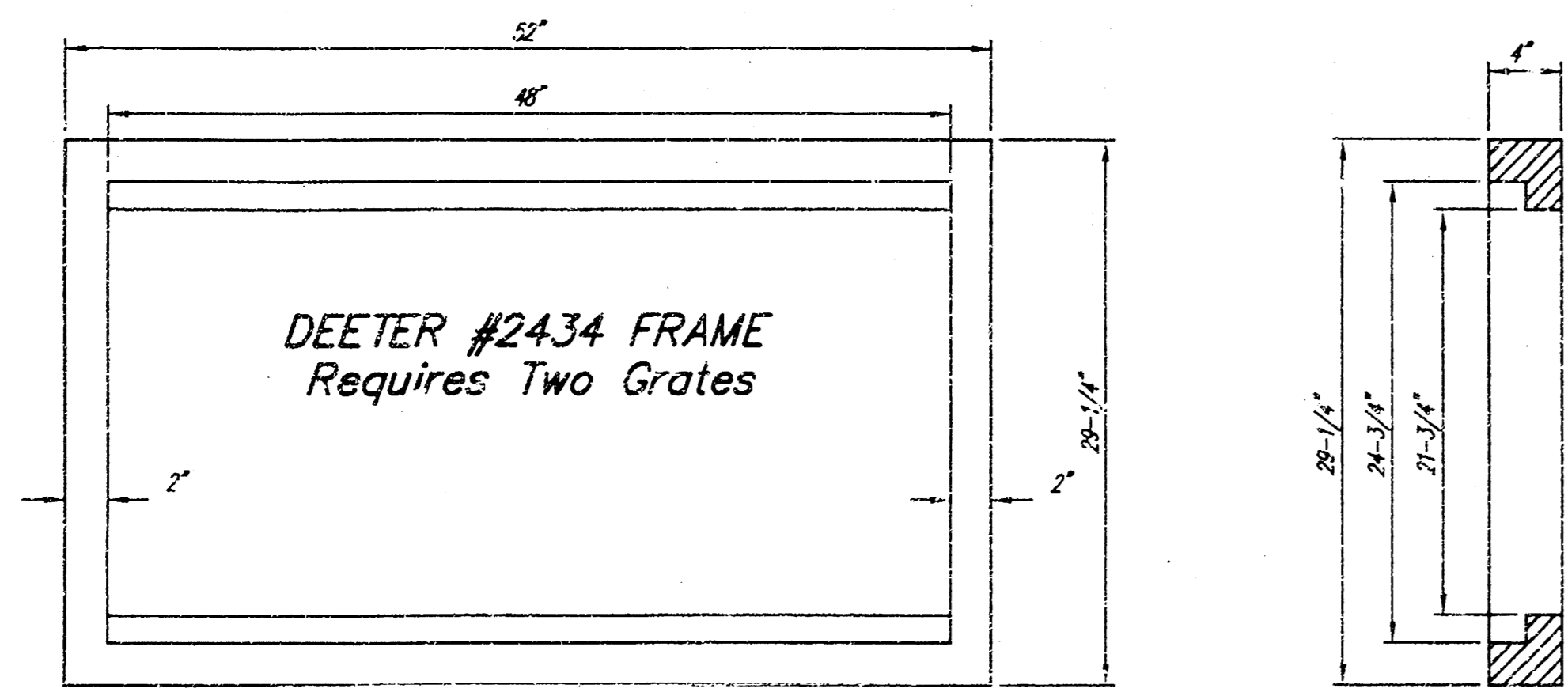


FRONT VIEW - SINGLE CURB INLET

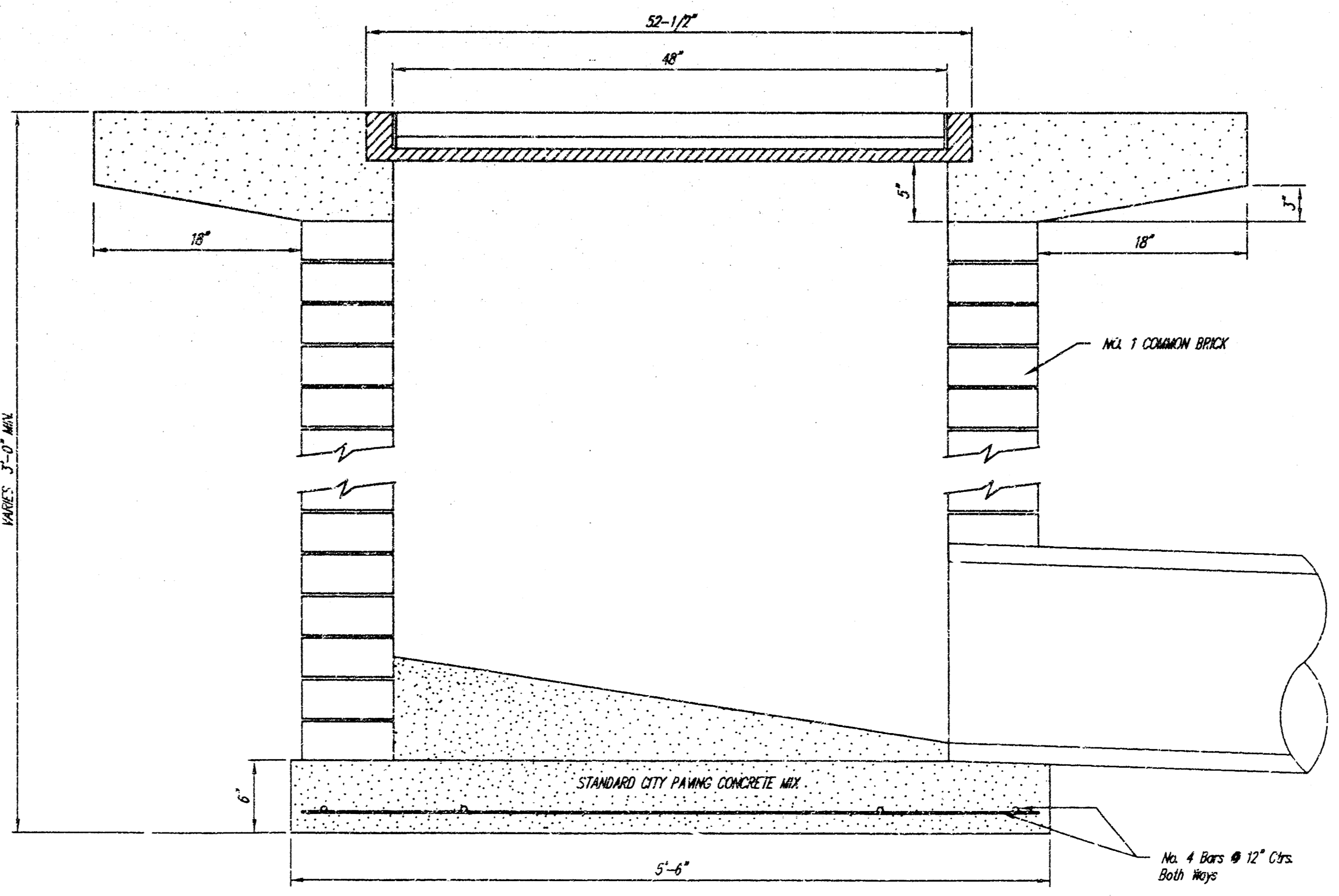
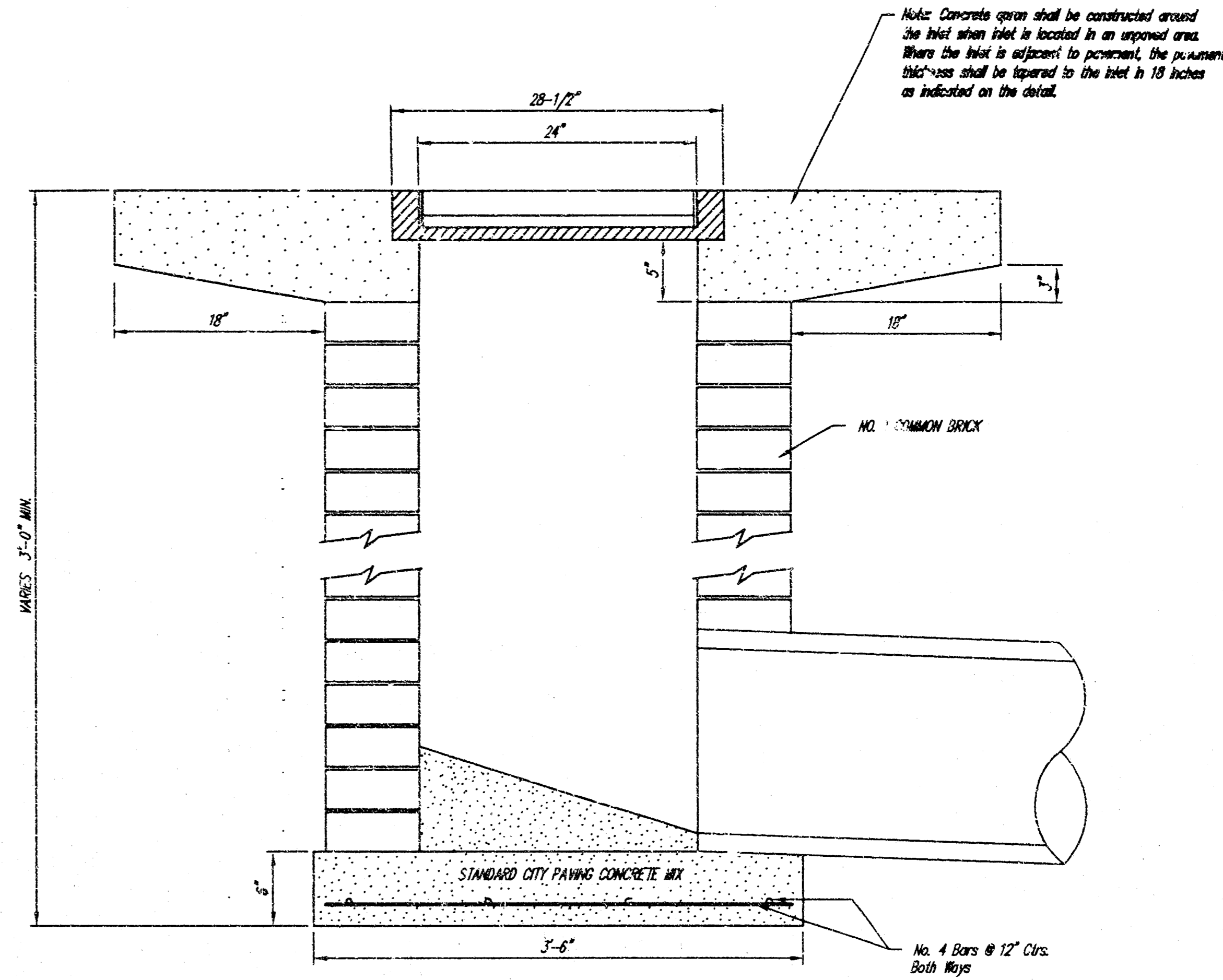
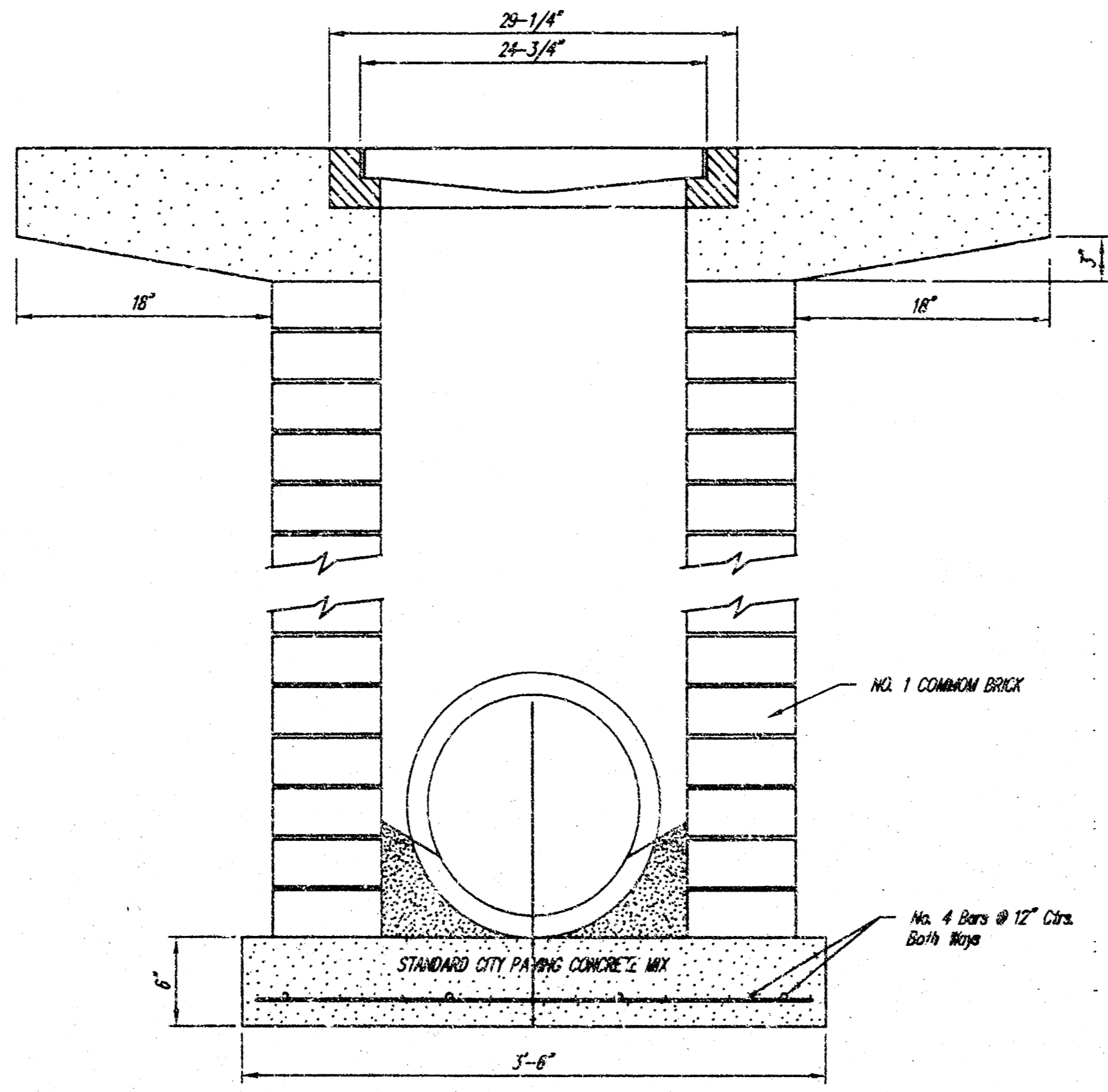
CURB INLET DETAIL, SINGLE AND DOUBLE					
SRB	924 NORTH MAIN		315-264-8008		REVISED
	WICHITA, KANSAS 67211		FAX 384-4822		
SAVOY, RUGGLES & BOHM, P.A. ENGINEERING & SURVEYING					
PROJECT NUMBER 458PPS (607861)					
DRAWN C. Bohm	DESIGN C. Bohm	REVIEW T.C.R.	DATE 4/94	UTILITY	SRB JCS
					4 6



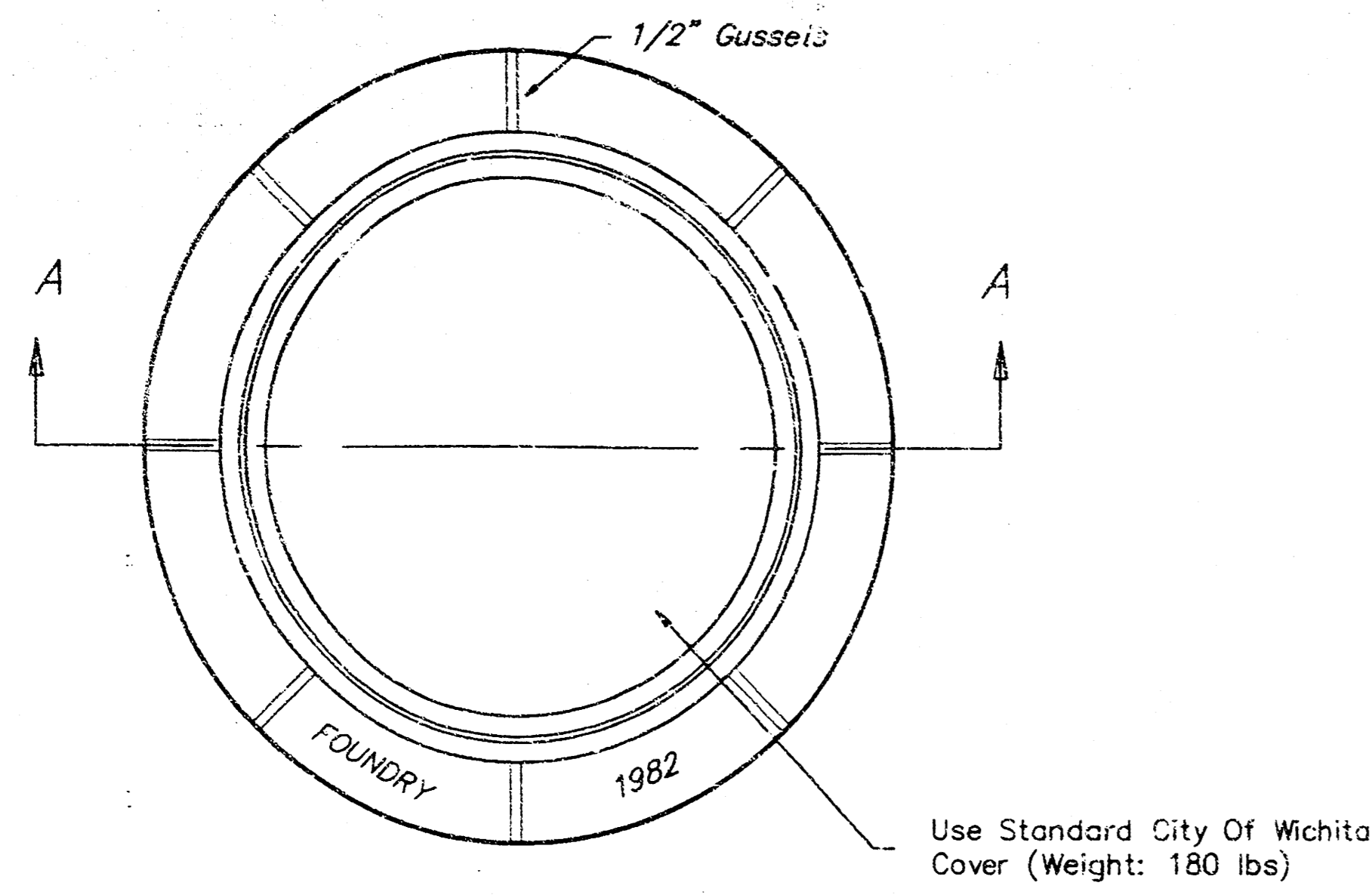
DEETER #2433 GRATE
24" x 24" Frame and Grate Detail



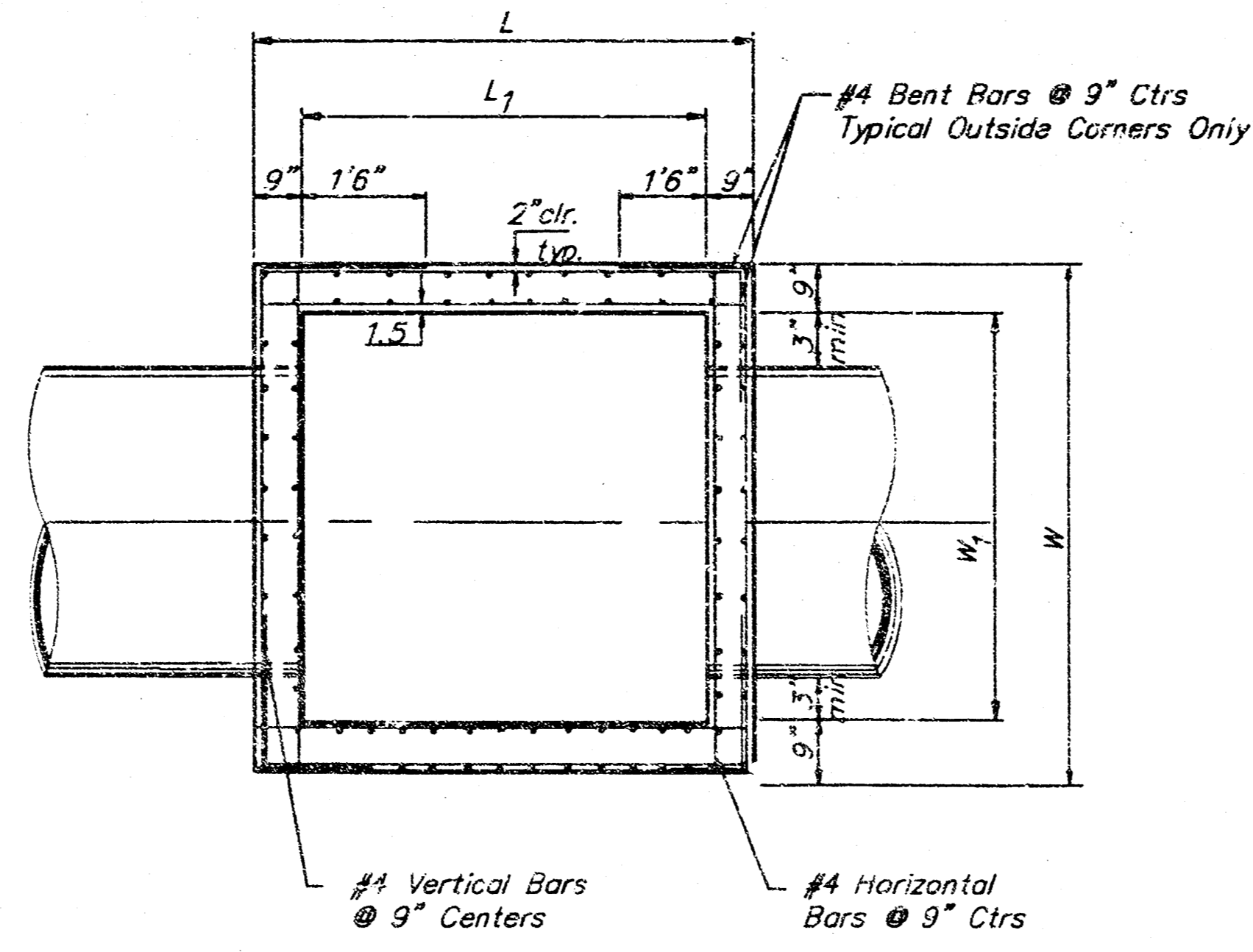
Double 24" x 24" Frame Detail



DROP INLET DETAILS	5
458PPS (607861)	6

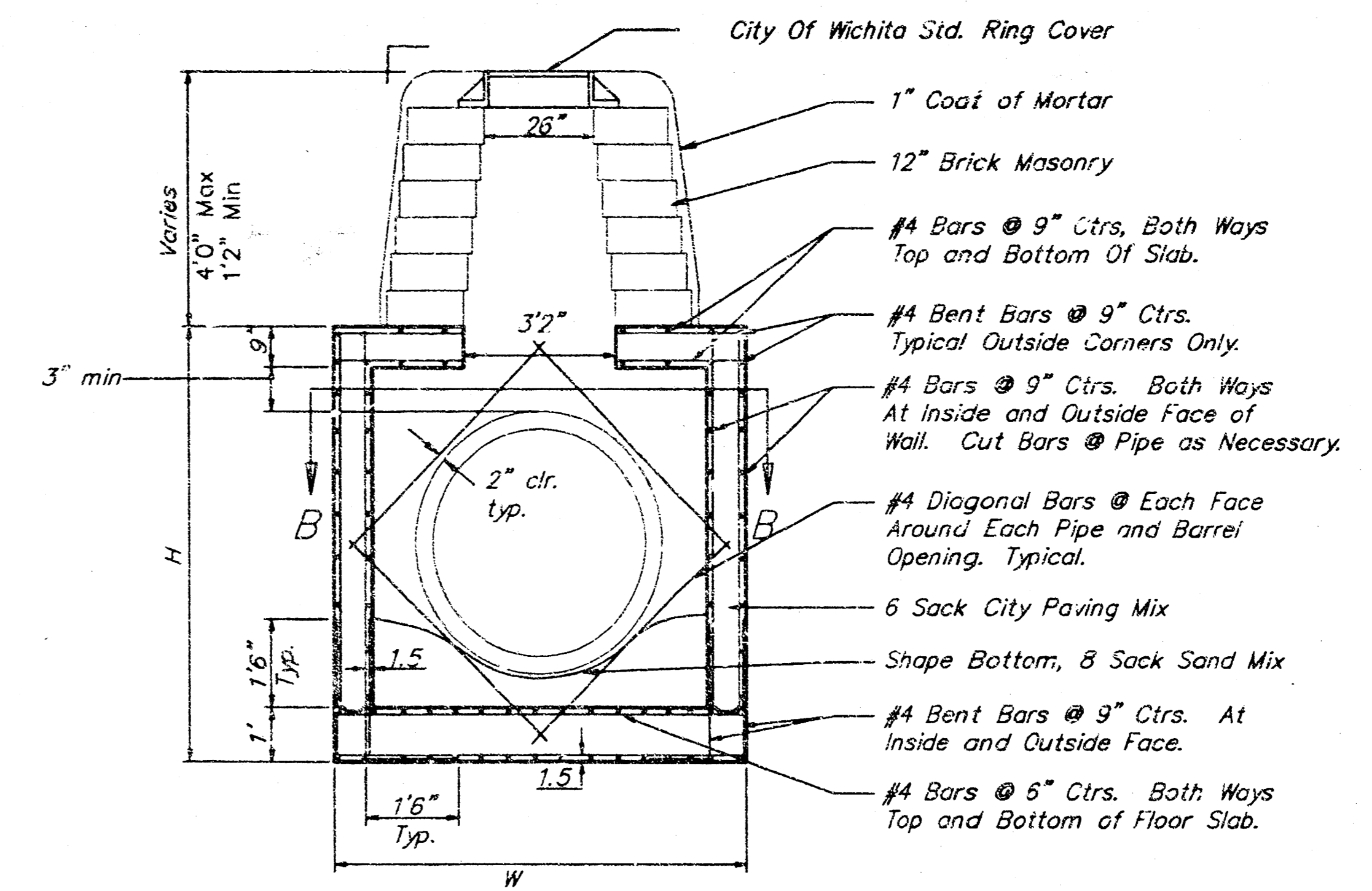


TOP VIEW

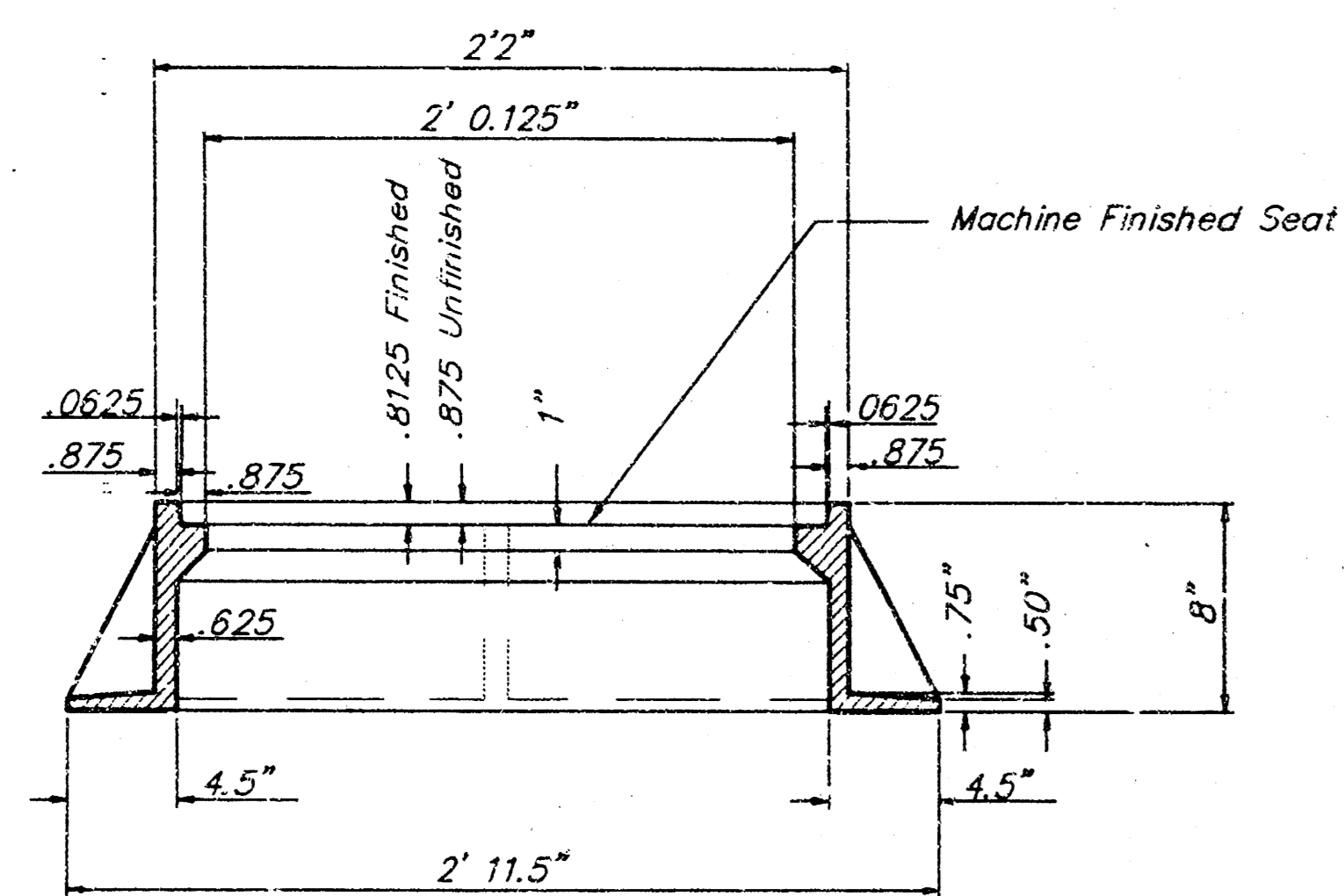


NOTE:
Bend Bars Not More Than 8" to Clear Pipes, or Cut Bars 2" Clear of Pipe, as Necessary.

SECTION B-B

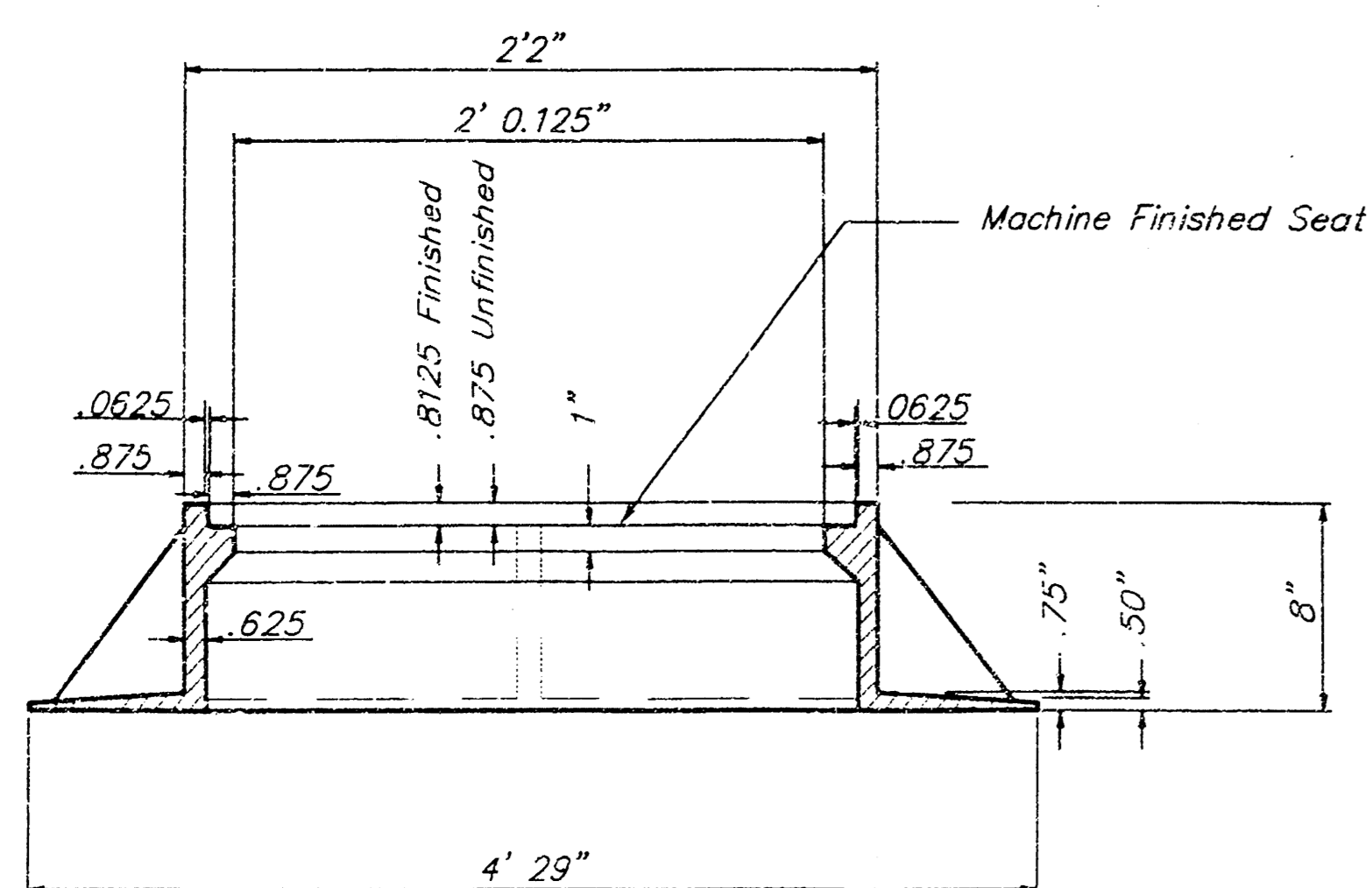


REINFORCED CONCRETE MANHOLE
STACK 2.33' TO 4'0"



SECTION A-A

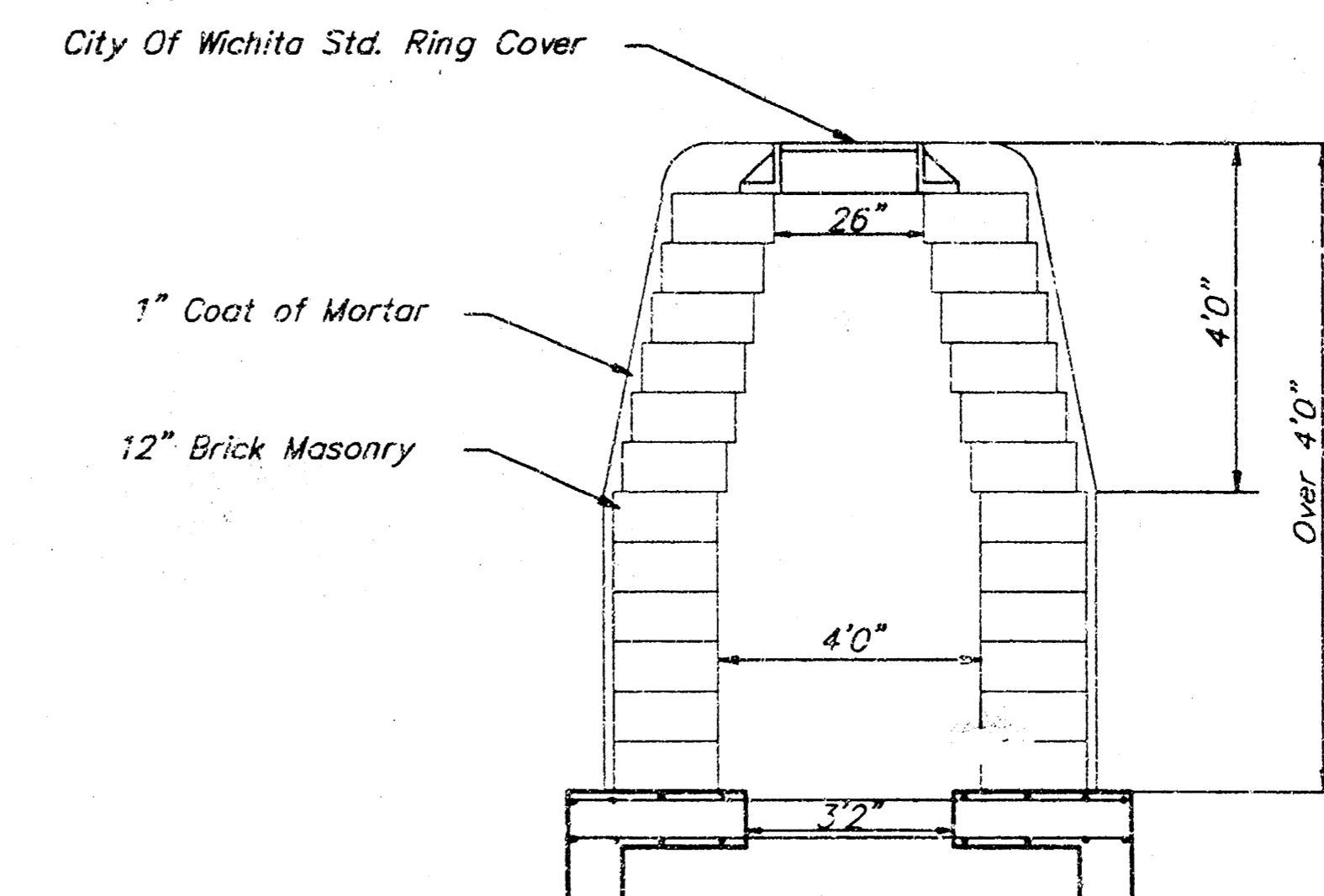
MANHOLE FRAME
Weight: 240 Lbs.



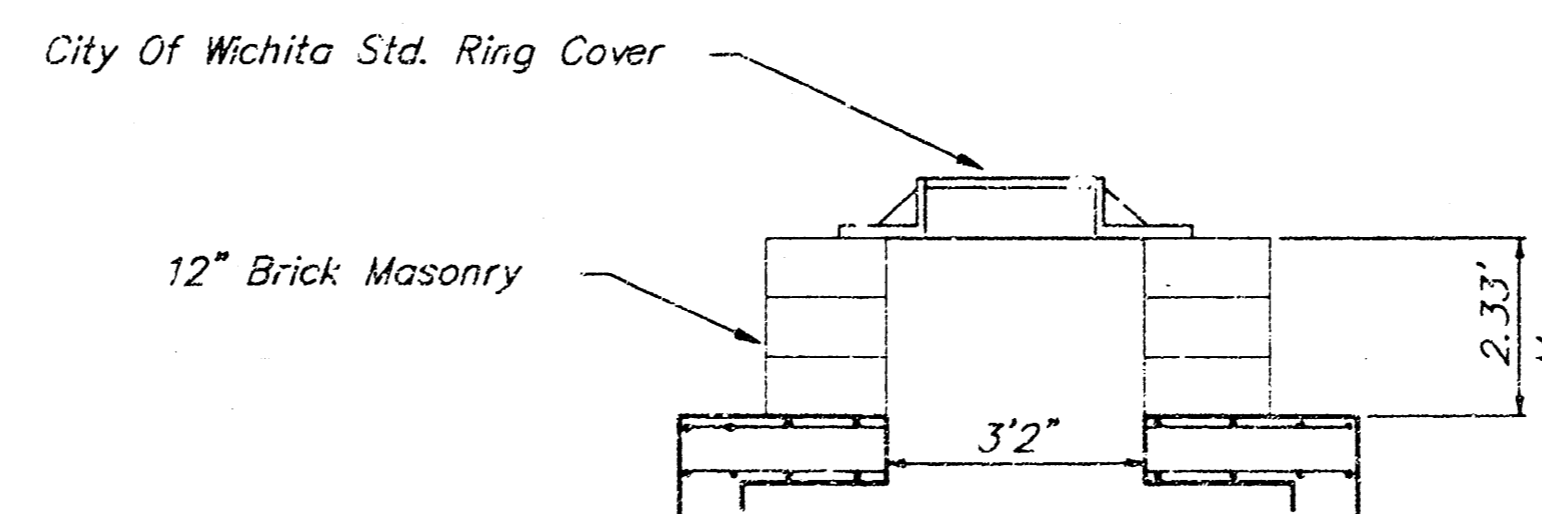
WIDE FLANGE RING
Weight: 705 Lbs.

GENERAL NOTES:

- MORTAR USED IN MASONRY CONSTRUCTION SHALL CONTAIN 8 SACKS OF CEMENT PER CUBIC YARD. CONCRETE USED IN MANHOLE WALLS AND BASES SHALL CONFORM TO THE REQUIREMENTS FOR CONCRETE PAVEMENT CONSTRUCTION AS SPECIFIED IN THE CITY STANDARD PAVING SPECIFICATIONS, USING CITY CONCRETE PAVING MIX WITHOUT AIR ENTRAINING ADMIXTURE. MORTAR SHALL BE PLACED AROUND THE MANHOLE RING AS SHOWN ON THE DRAWINGS WHEN MANHOLES ARE CONSTRUCTED IN UNPAVED AREAS. COMPLETED MANHOLE SHALL BE WITHOUT LEAKS AND WATER TIGHT.
- THE FLOORS OF ALL MANHOLES SHALL BE SHAPED WITH FLOW CHANNELS SUCH THAT THE MANHOLES WILL BE SELF-CLEANING. USING 8-SACK SAND MIX CONCRETE. FLOW CHANNELS SHALL BE FORMED TO MATCH THE BOTTOM HALVES OF THE INFLOWING PIPES AND THE OUTFLOWING PIPE. MANHOLE FLOORS SHALL HAVE SLOPES OF 3 INCHES PER FOOT IN THE AREAS OUTSIDE OF THE FLOW CHANNELS SLOPED TOWARD THE FLOW CHANNELS.
- MANHOLE COVER CASTINGS AND MANHOLE FRAME CASTINGS SHALL CONFORM TO THE REQUIREMENTS AS INDICATED IN THE STANDARD SPECIFICATIONS AND AS SHOWN IN THE STANDARD DETAIL DRAWING.
- THE ENDS OF ALL PIPES IN MANHOLES SHALL BE CUT OFF FLUSH WITH THE INSIDE FACE OF MANHOLE WALL.



MANHOLE STACK OVER 4'0"



MANHOLE STACK LESS THAN 2.33'

REINFORCED CONCRETE MANHOLE						
SRB	924 NORTH MAIN WICHITA, KANSAS 67211		316-264-8008 FAX 264-4821		REVISIONS	
	SAVOY, RUGGLES & BOHM, P.A. ENGINEERING & SURVEYING				6	
PROJECT NUMBER 458PPS (607861)					6	
DESIGN	REVIEW	DATE	UTILITY	SRB JOB		