

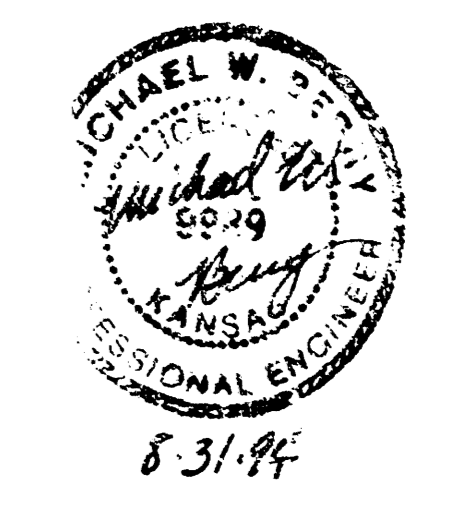
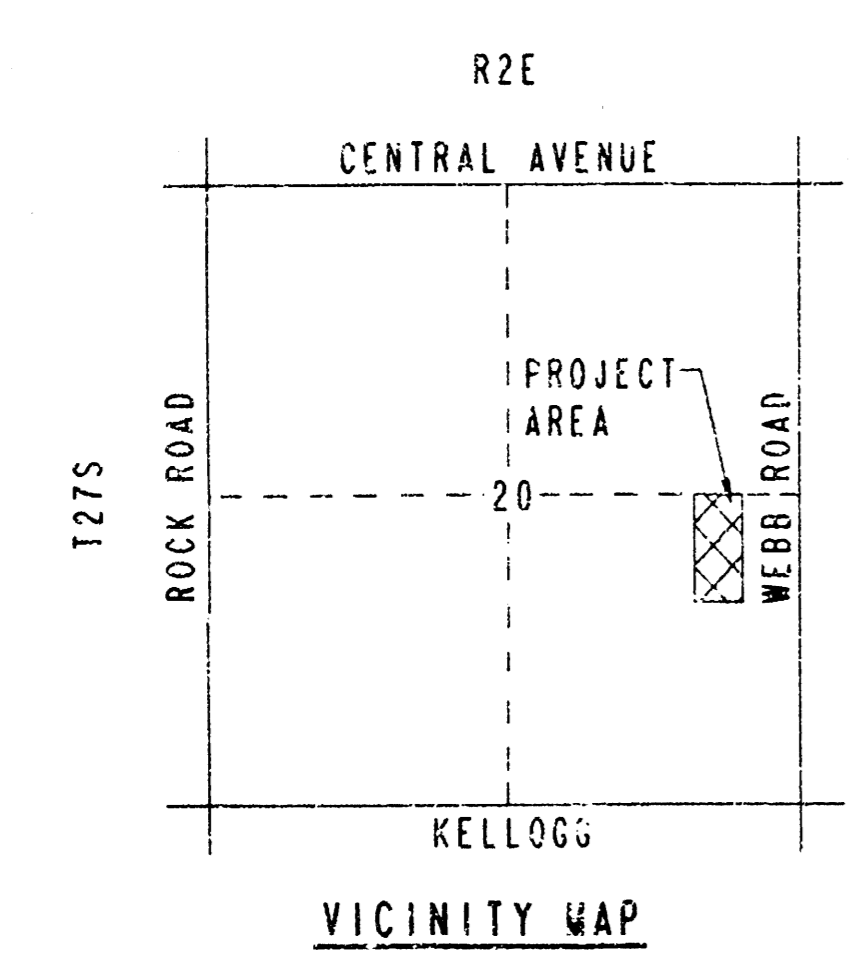
SHEET NO.	TOTAL SHEETS
1	10

PLANS FOR STORM WATER SEWER IMPROVEMENTS

FOR
LOT 2
PHI ADDITION
CITY OF WICHITA PRIVATE PROJECT NO. 491PPS (607861)

INDEX OF SHEETS

1. TITLE SHEET
2. DRAINAGE DETAILS
3. DRAINAGE PLAN
4. SWS PROFILES
5. TYPICAL SECTIONS & DRAINAGE DETAILS
6. R. C. MANHOLE DETAILS
7. MANHOLE FRAME & COVER DETAIL
8. STANDARD TYPE IA CURB INLET
9. PLAT



APPROVED AS NOTED
BY CITY ENGINEER OF WICHITA

SANITARY SEWERS _____
 STORM SEWERS VRH 9/1/94
 DRIVEWAY APPROACHES _____
 WATER MAINS _____
 PAYING _____

NOTE TO CONTRACTOR

INSPECTION AND TESTING FOR THIS PROJECT IS TO BE PROVIDED BY A LICENSED CONSULTING ENGINEERING FIRM UNDER CONTRACT WITH THE OWNER/DEVELOPER. SAID INSPECTION TO BE IN ACCORDANCE WITH THE CITY OF WICHITA STANDARD CONSTRUCTION ENGINEERING PRACTICES AND CERTIFIED BY A LICENSED PROFESSIONAL ENGINEER. NO WORK SHALL BE PERFORMED IN DEDICATED EASEMENTS OR PUBLIC RIGHT-OF-WAY BY THE CONTRACTOR WITHOUT SUCH INSPECTION NOR SHALL ANY WORK BE COMMENCED IN DEDICATED EASEMENTS OR PUBLIC RIGHT-OF-WAY WITHOUT WRITTEN AUTHORIZATION BY THE CITY ENGINEER.

AUGUST, 1994

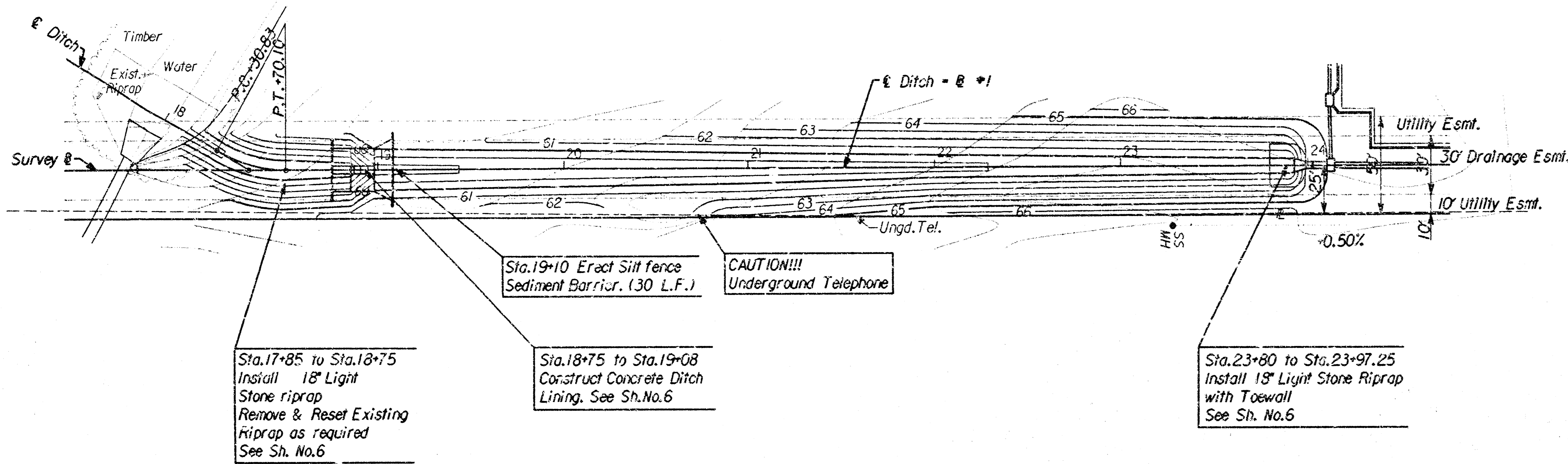
PLANS PREPARED BY
PROFESSIONAL ENGINEERING CONSULTANTS, P.A.
ENGINEERS
WICHITA, KANSAS

DRAWING NAME: 16-94326 TITLE
 LOCATION: PHOENIX, ARIZONA
 ROTATION ANGLE:
 DATE LAST WORKED ON:
 DAR CRONK

Curve Data
 P.I. Sta. 18+50.93 (Bk.)
 P.I. Sta. 18+50.00 (Ahd.)
 Sta. 18+50.00
 $\Delta = 30'00''$
 $D = 76'23'40''$
 $R = 75.00'$
 $T = 20.10'$
 $L = 39.27'$
 $E = 2.65'$

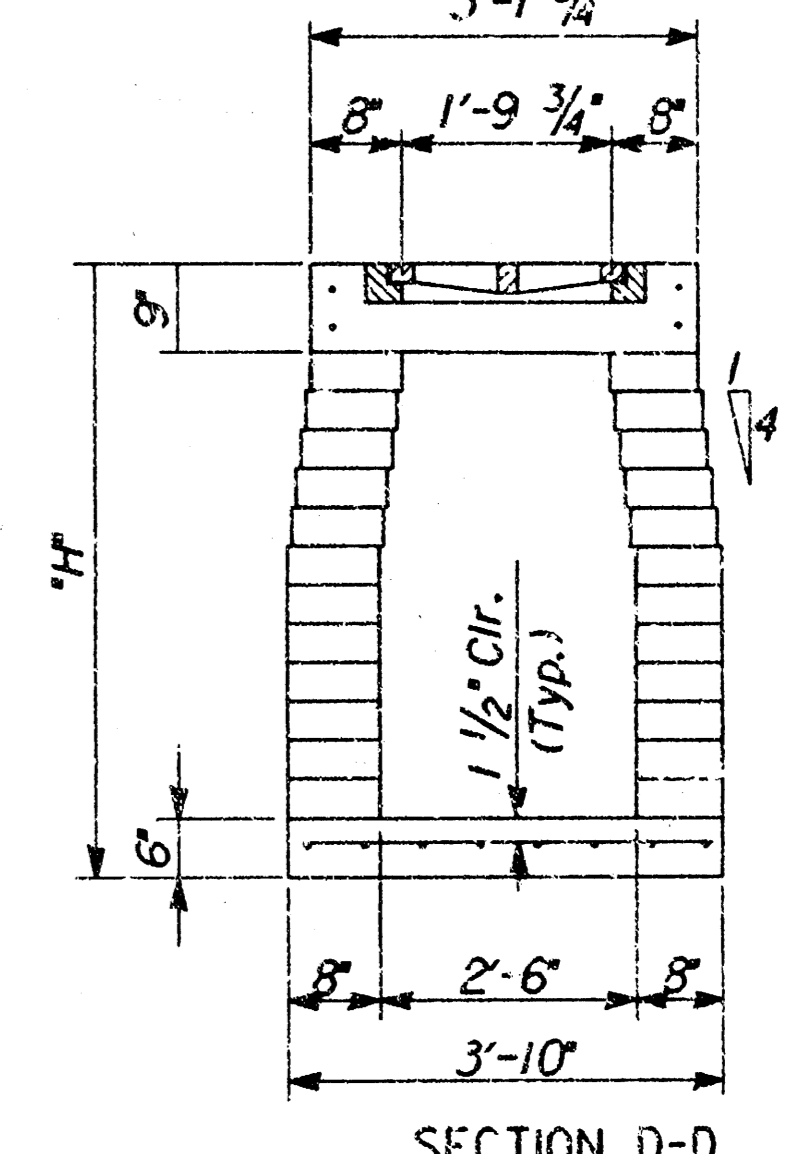
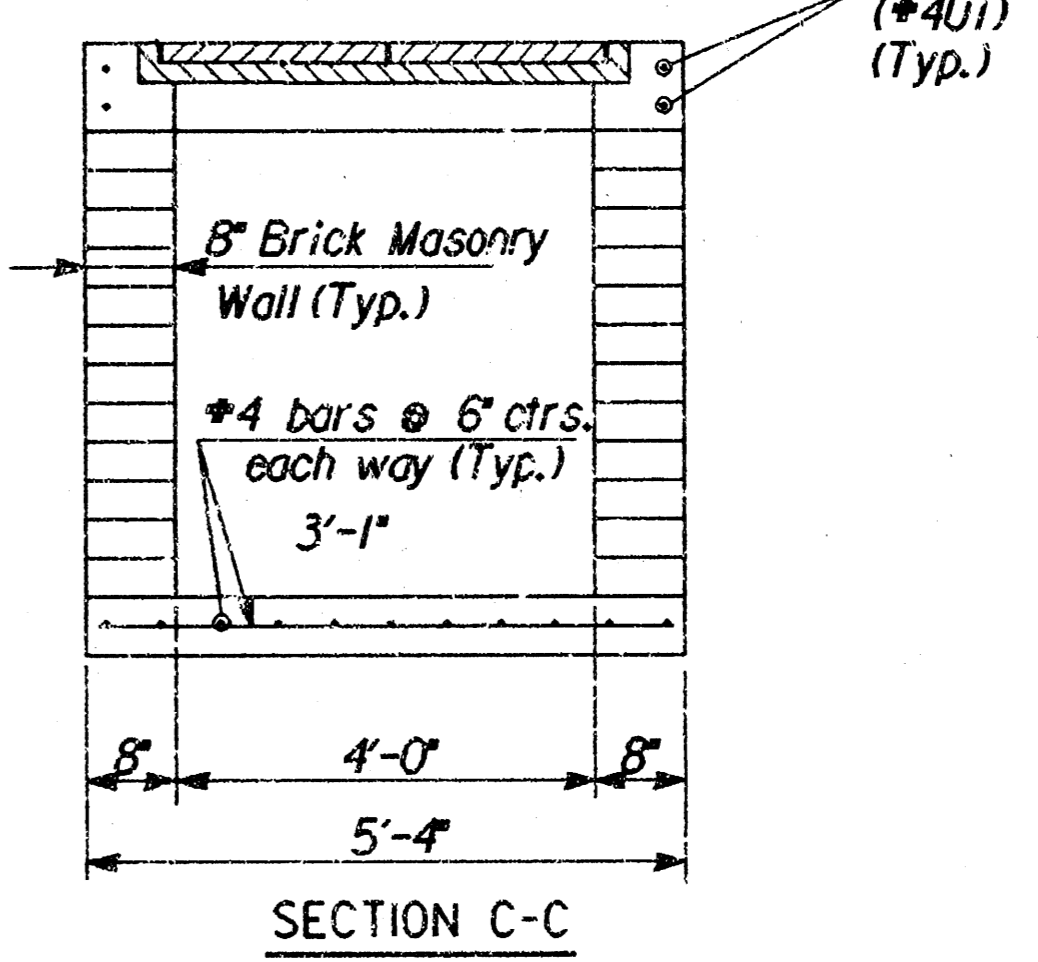
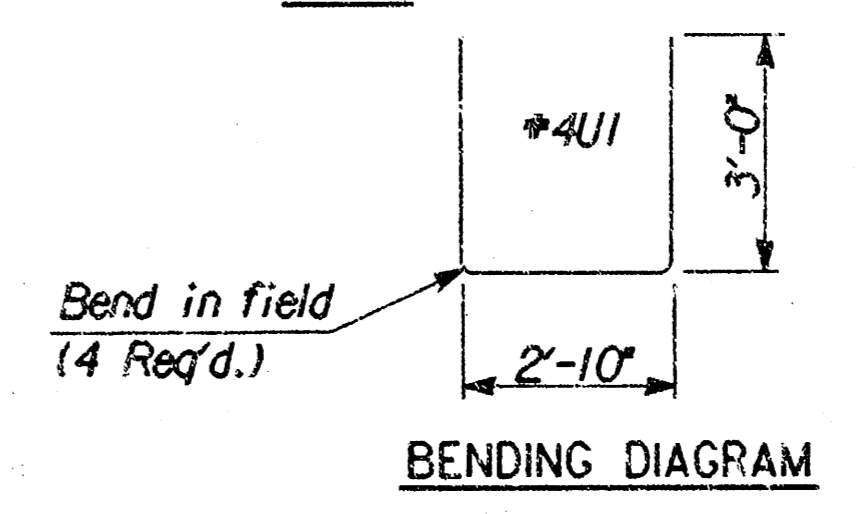
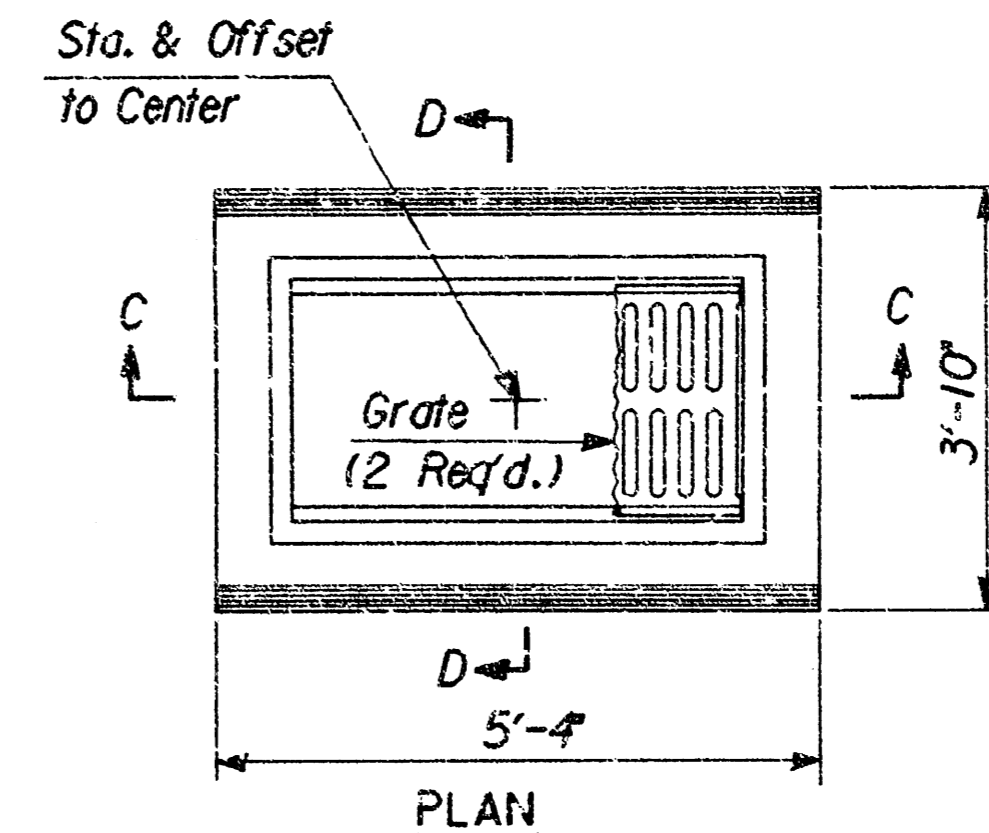
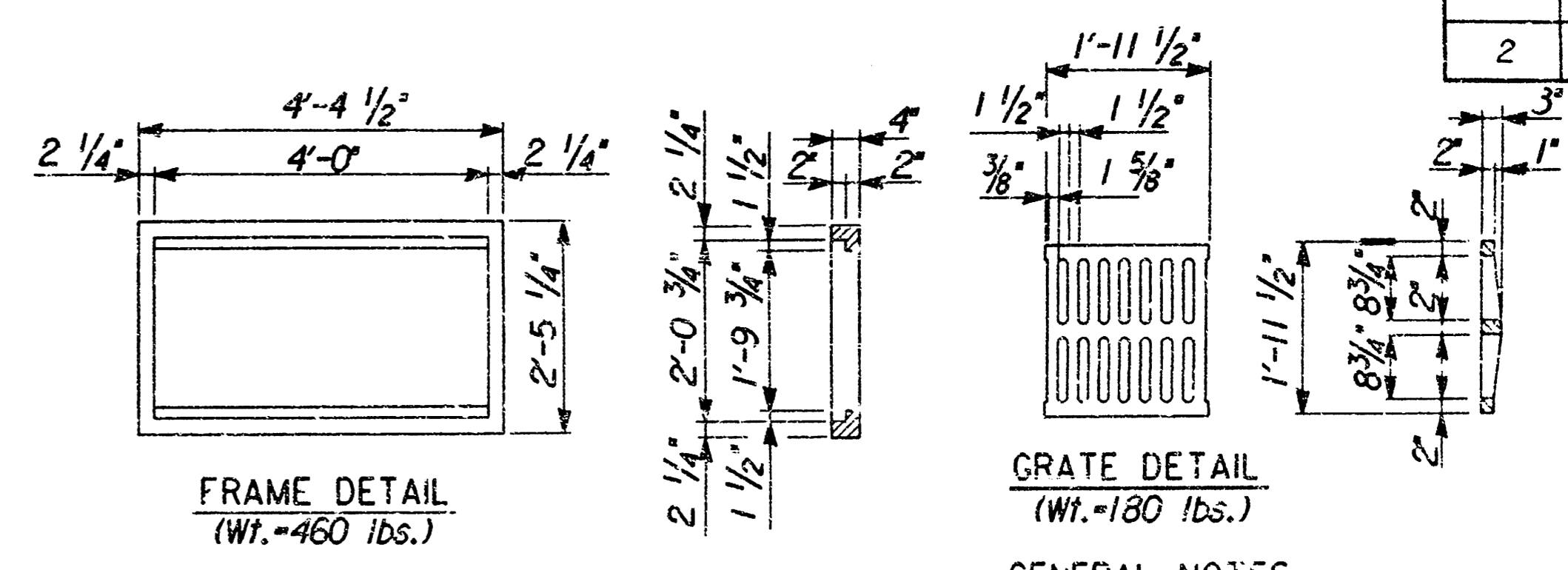
SCALE: 1"=40'

SHEET NO.	TOTAL SHEETS
2	10



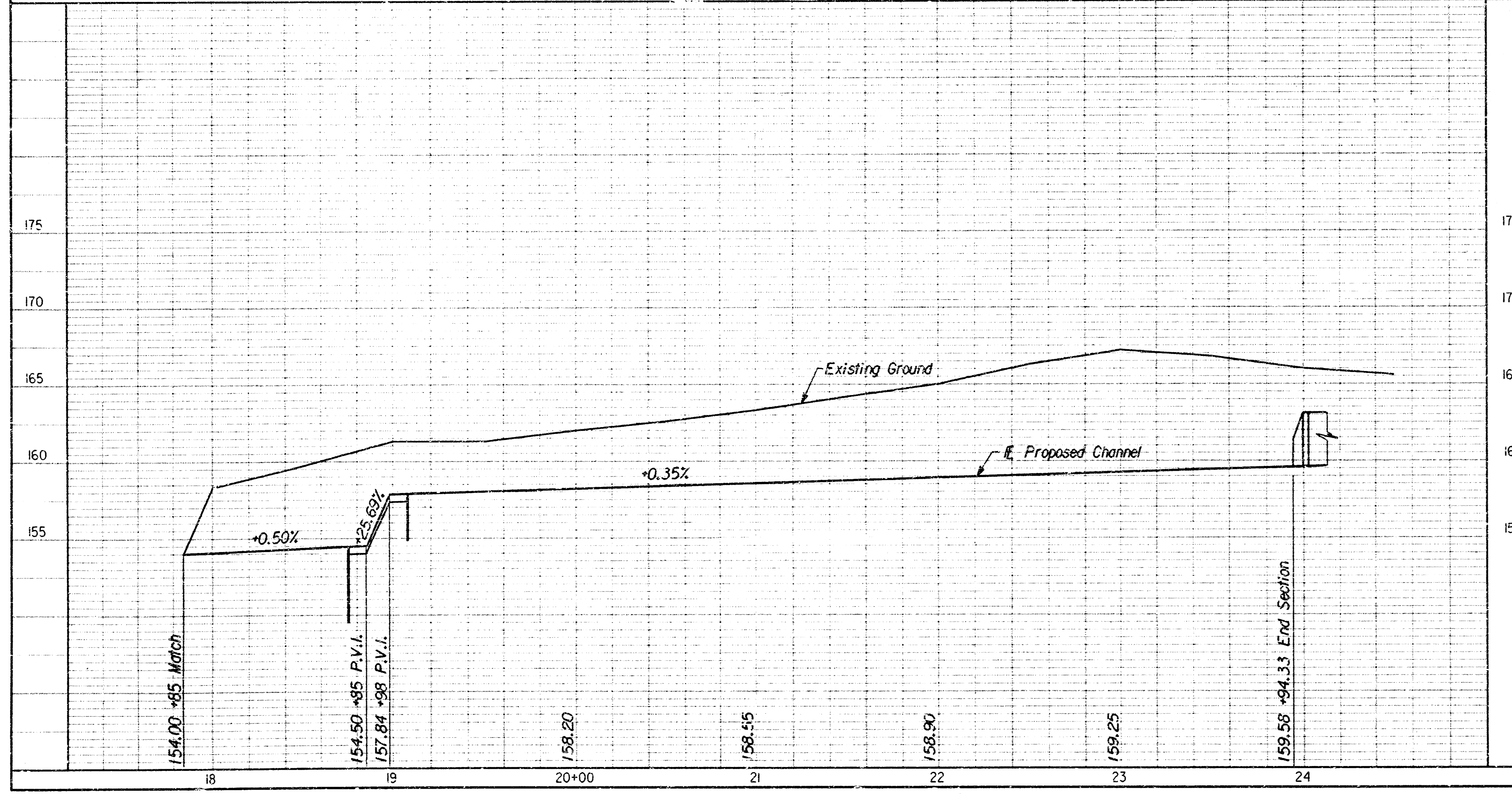
Note: All disturbed areas Sta. 17+85 to Sta. 24+00 are to be seeded, fertilized, and mulched at the following rates:
 Prairie Hay Mulch 1500 lbs./acre
 K-31 Fescue 300 lbs./acre
 Fertilizer 10-20-10 350 lbs./acre

B.M. - CHISELED "O" & CONCRETE SLAB OF FIBER OPTICS MH. ELEV. = 176.11



GENERAL NOTES
 ALL EXPOSED EDGES OF CONCRETE SHALL BE FINISHED WITH AN APPROVED EDGING TOOL.
 REINFORCING STEEL SHALL BE A MINIMUM GRADE 40, A.S.T.M. A615. ALL DIMENSIONS RELATIVE TO PLACEMENT OF REINFORCING ARE TO THE CENTERLINE OF BARS UNLESS OTHERWISE NOTED.
 INLET CASTINGS SHALL BE MANUFACTURED USING GOOD QUALITY GRAY IRON CONFORMING TO CLASS 30 OF A.S.T.M. DESIGNATION A-48. DIMENSIONS AND WEIGHTS SHOWN ON THE DETAILED DRAWINGS SHALL BE CONSIDERED AS MINIMUM REQUIREMENTS AND ANY DEVIATIONS FROM THE DIMENSIONS SHOWN MUST BE SPECIFICALLY APPROVED. THE FINISHED CASTINGS SHALL BE OF UNIFORM QUALITY, FREE FROM BLOWHOLES, POROSITY, HARD SPOTS, SHRINKAGE DISTORTIONS OR OTHER DEFECTS.
 INLET FLOOR SHALL BE SHAPED WITH UNREINFORCED CLASS III CONCRETE TO CREATE FLOW CHANNELS AND TO INCREASE HYDRAULIC EFFICIENCY SUCH THAT THE INLET WILL BE SELF-CLEANING BETWEEN ALL INLET AND/OR OUTLET PIPES.

AREA INLET (TYPE II)



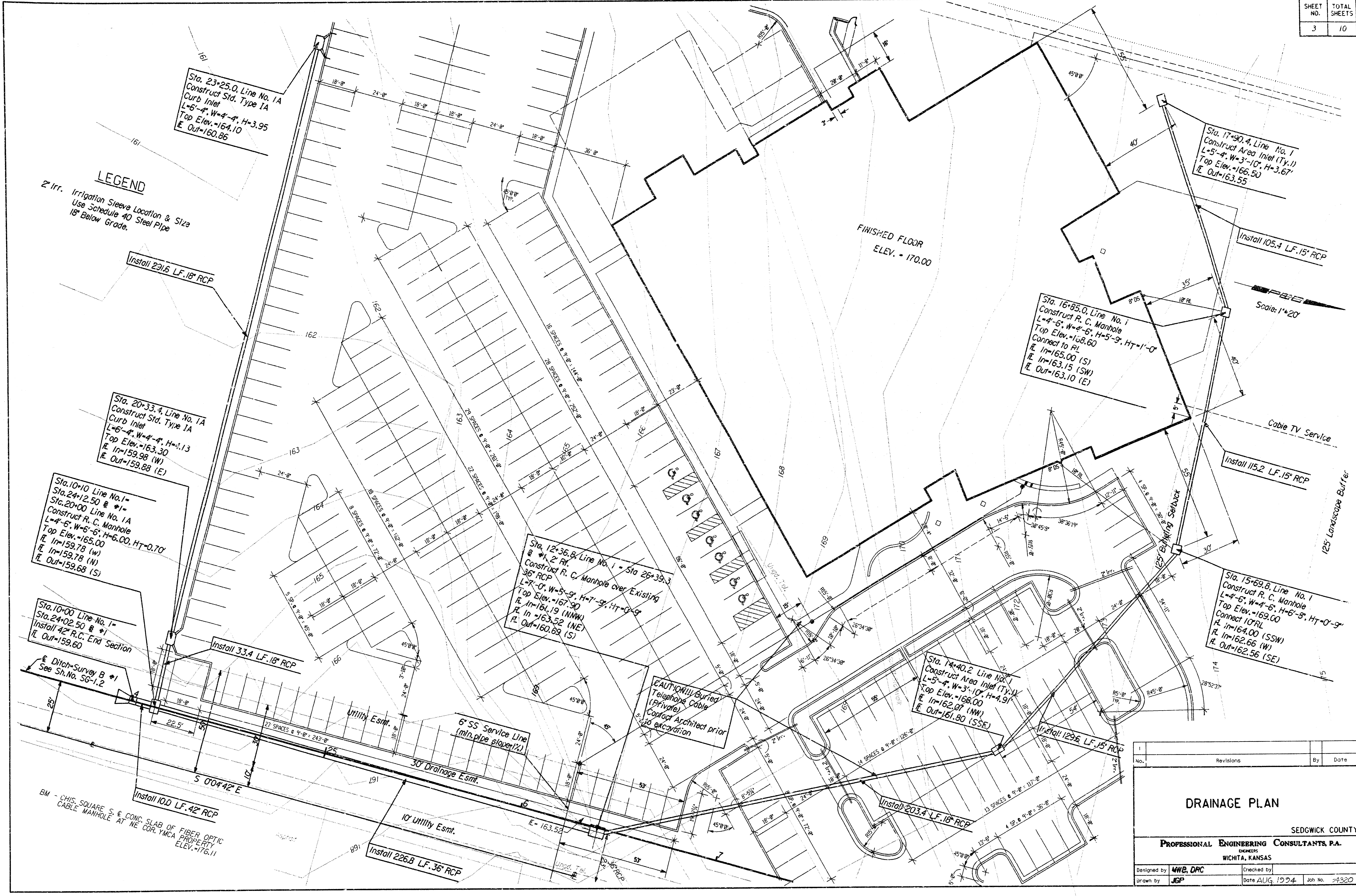
EAST SIDE Y.M.A.
DITCH PLAN AND PROFILE
 STA. 17+85.0 TO STA. 23+94.33
 PROFESSIONAL ENGINEERING CONSULTANTS, P.A.
 ENGINEERS
 WICHITA, KANSAS
 Job No. 36-94320
 Date 8-15-94
 Designed By MMB
 Drawn By JGP

No.	Revisions	By	Date
DRAINAGE DETAILS			
SEDGWICK COUNTY			
PROFESSIONAL ENGINEERING CONSULTANTS, P.A.			
ENGINEERS WICHITA, KANSAS			
Designed by	MMB, DRC	Checked by	
Drawn by	JGP	Date	AUG., 1994
		Job No.	94320

SHEET NO.	TOTAL SHEETS
3	10

LEGEND

2" Irr. Irrigation Sleeve Location & Size
Use Schedule 40 Steel Pipe
18" Below Grade.



No.	Revisions	By	Date

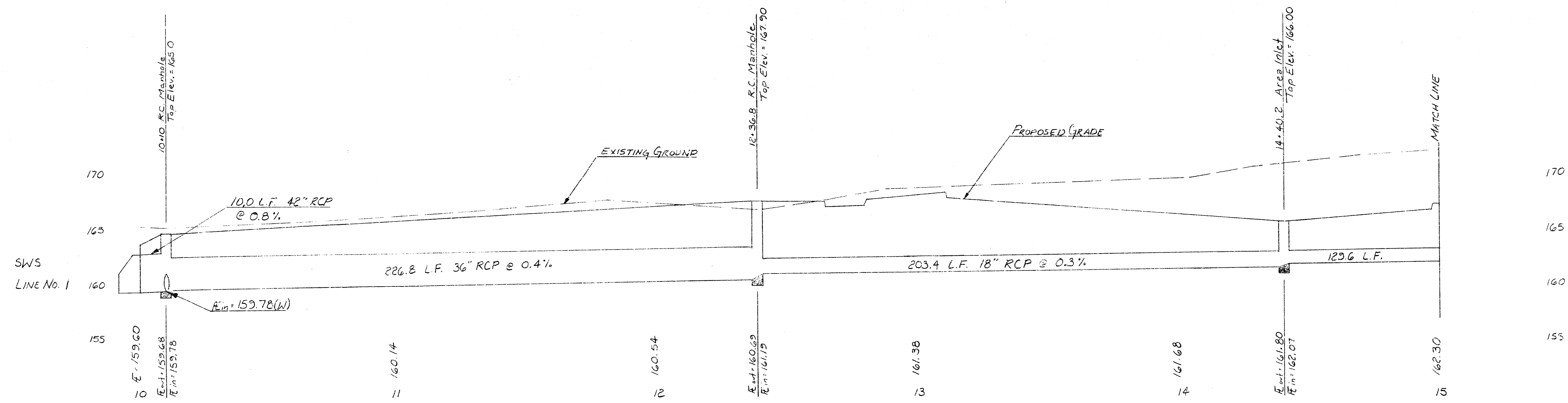
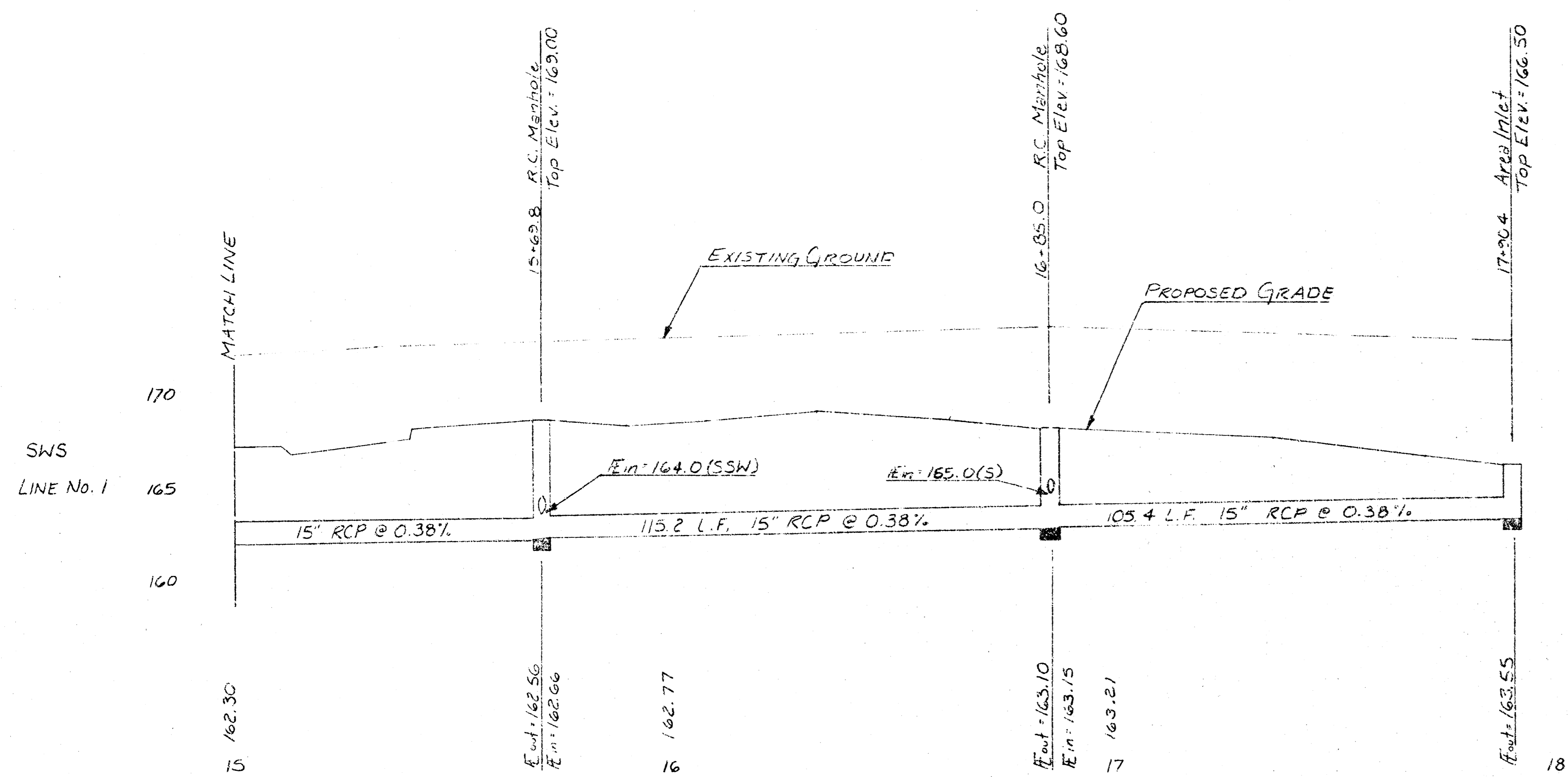
DRAINAGE PLAN

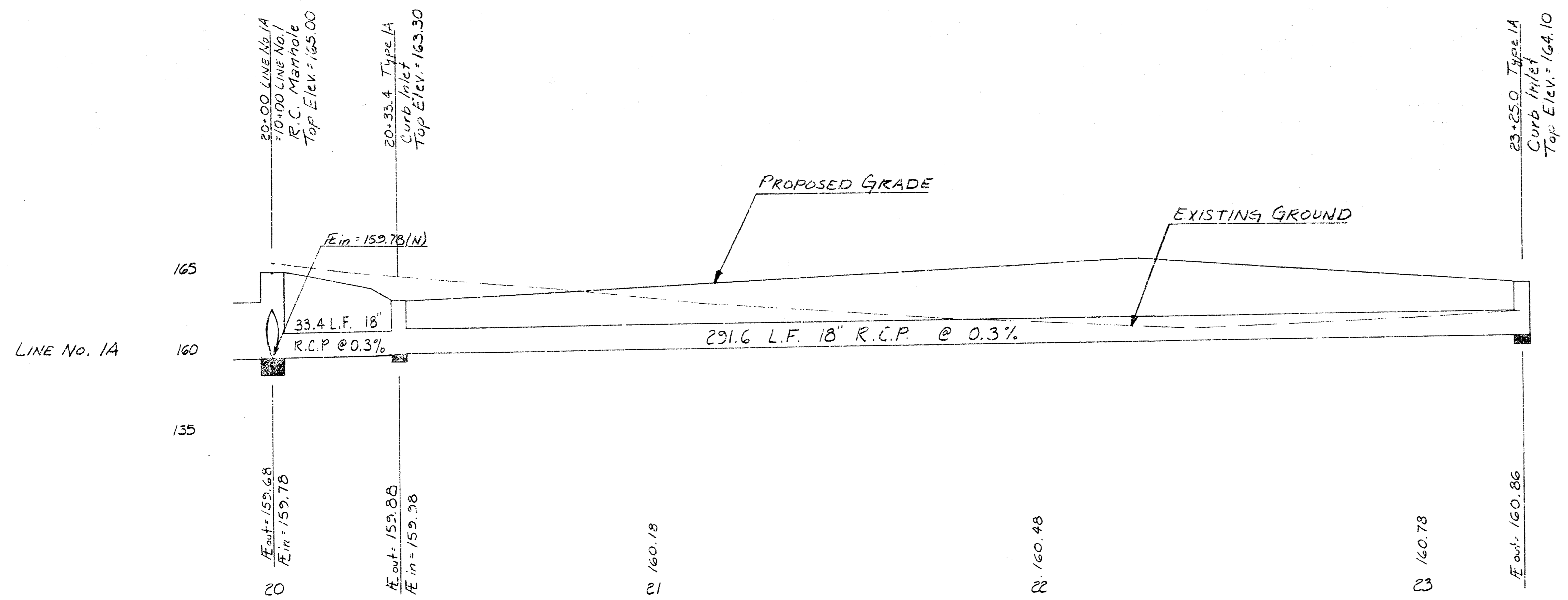
SEDGWICK COUNTY

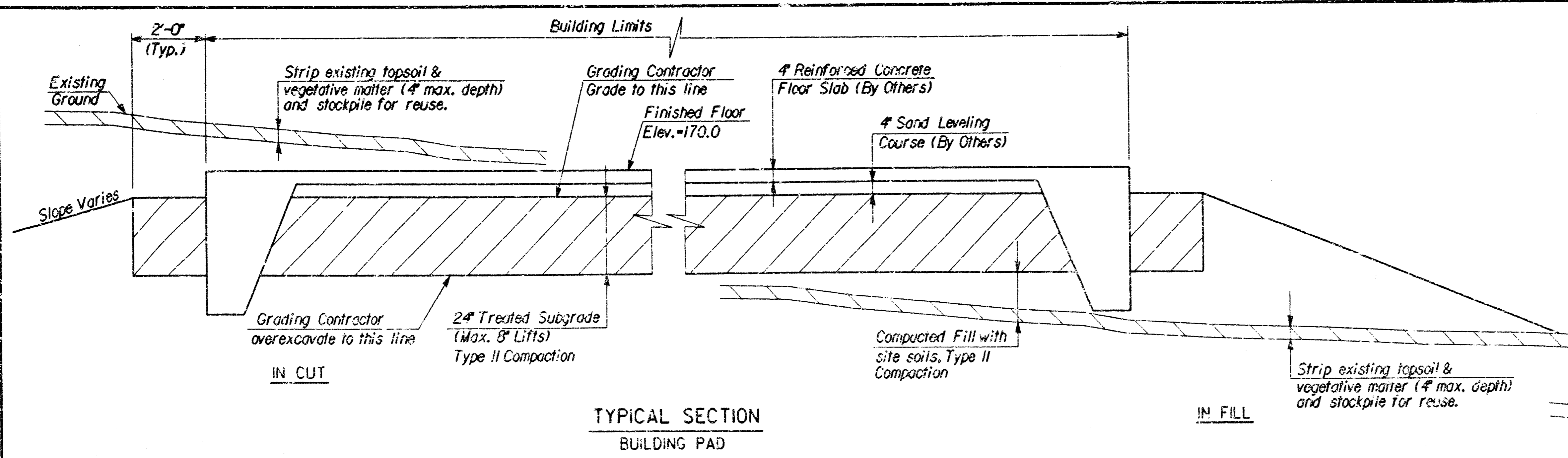
PROFESSIONAL ENGINEERING CONSULTANTS, P.A.
ENGINEERS
WICHITA, KANSAS

Designed by: **MWB, DAC** Checked by: _____
 Drawn by: **JGP** Date: **AUG. 1994** Job No. **24320**

usr/ustm/dgn/
drawn by:
plotted by:

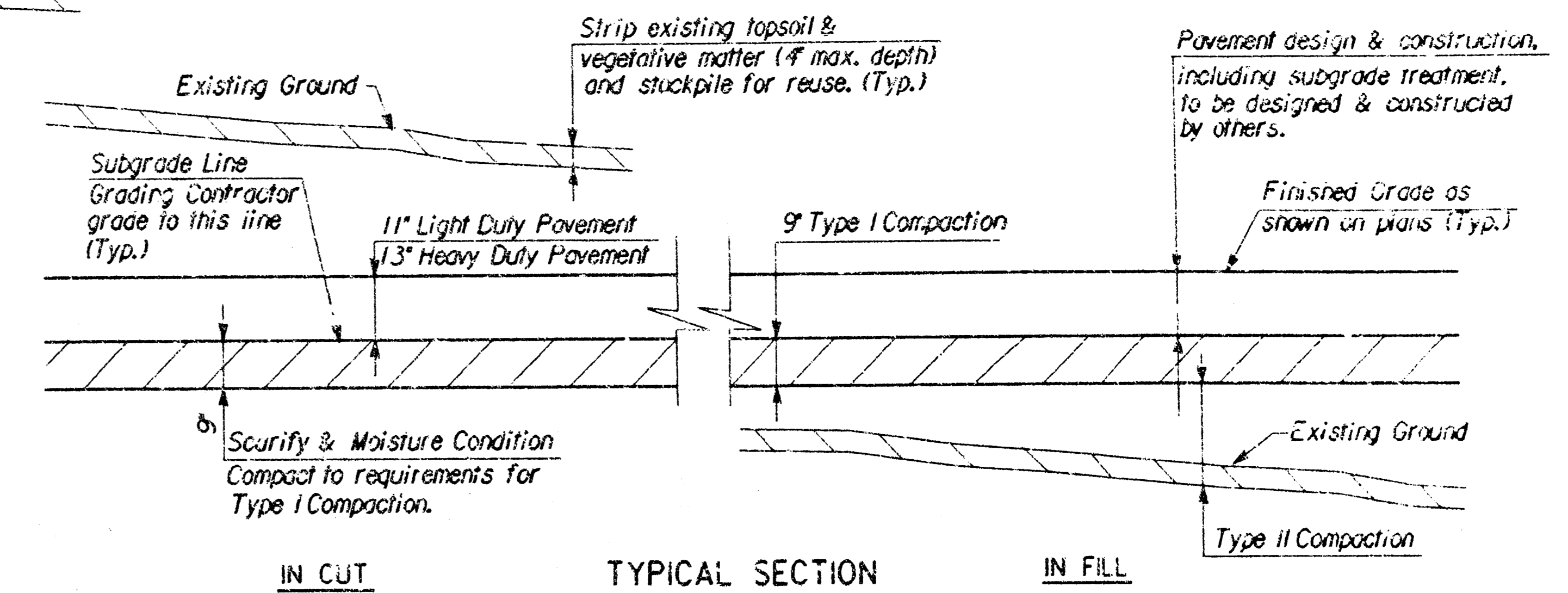




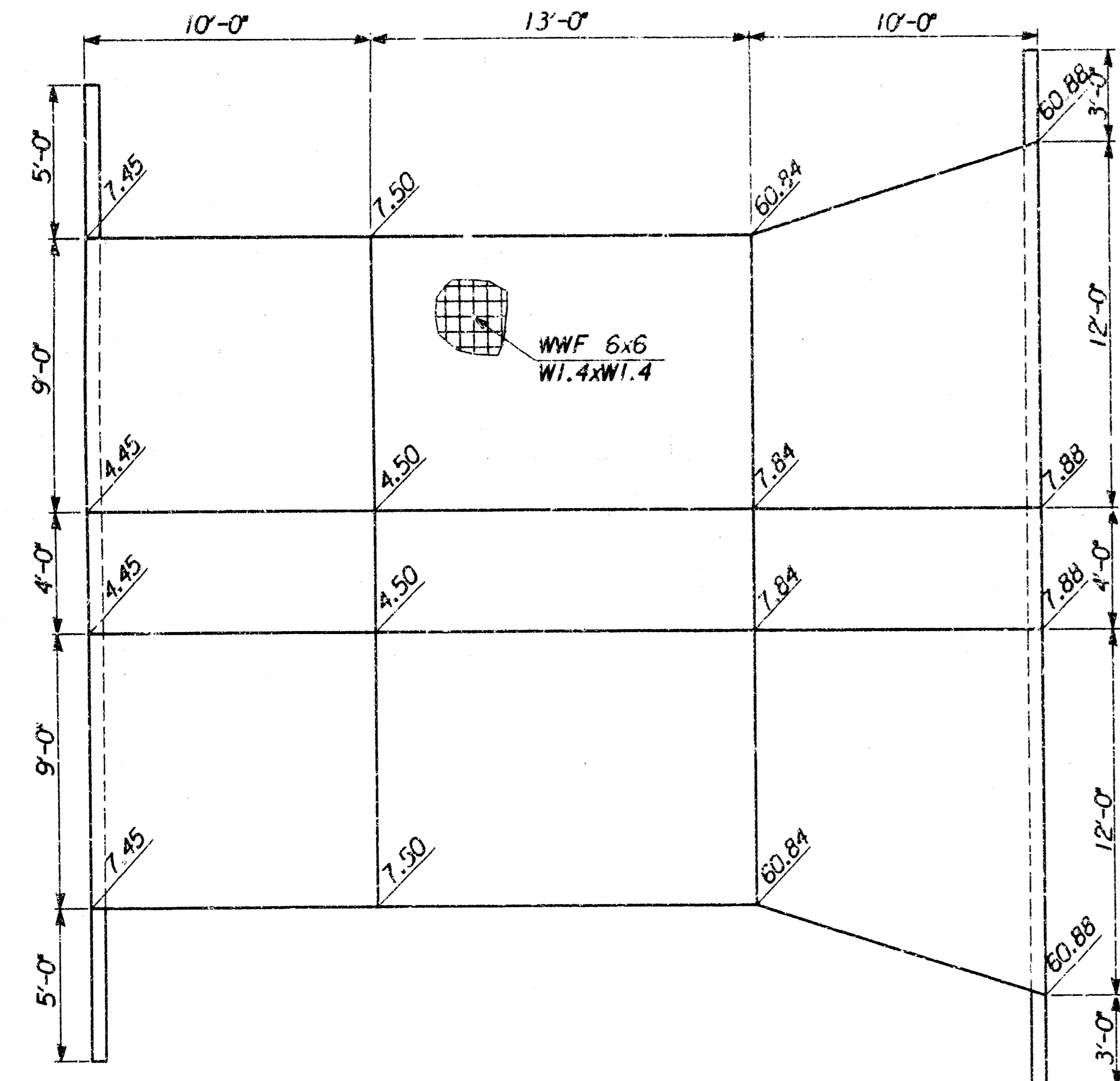


TYPICAL SECTION BUILDING PAD

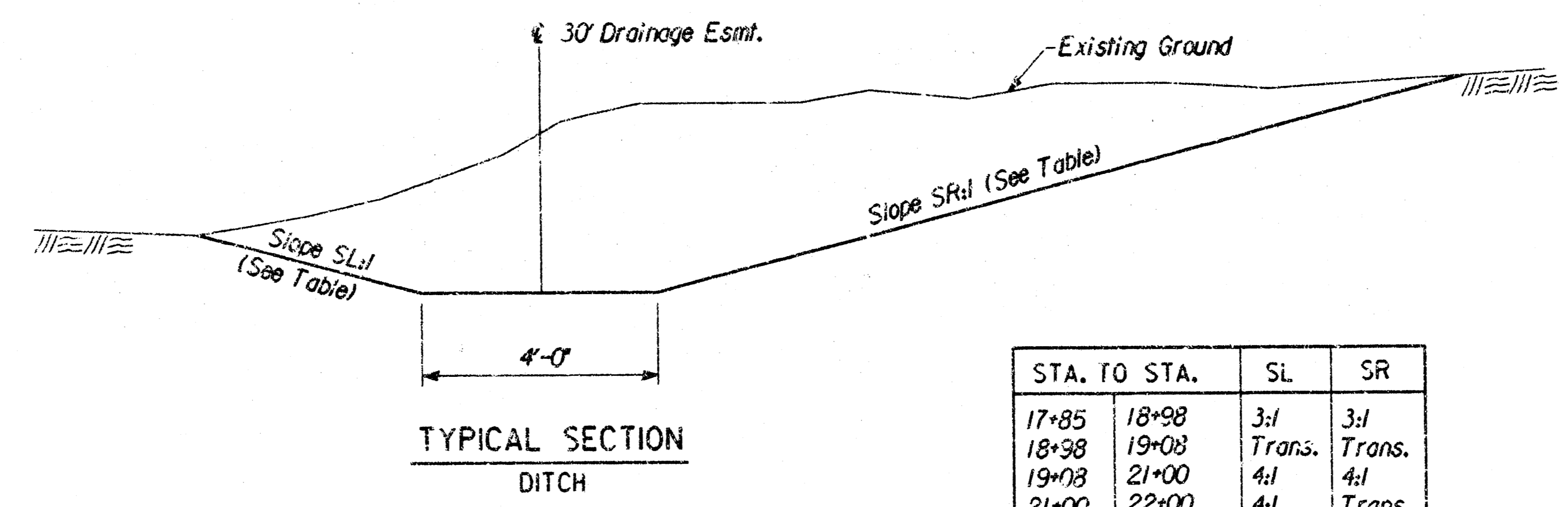
NOTE: Contractor to retain an approved laboratory to perform soils tests to determine application rate of Hydrated Lime or Class C Fly Ash at his own expense.



TYPICAL SECTION PARKING LOT

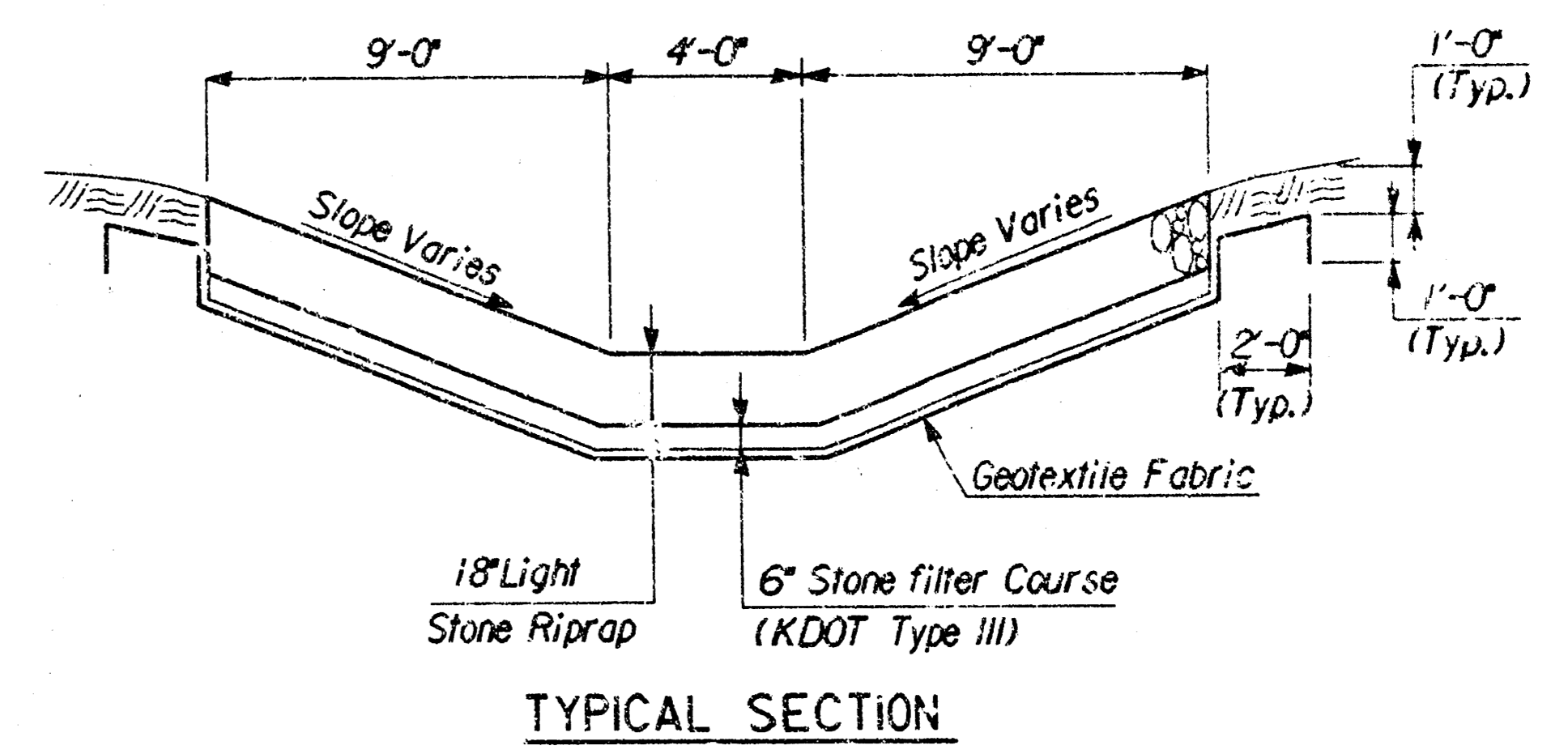


CONCRETE DITCH LINING

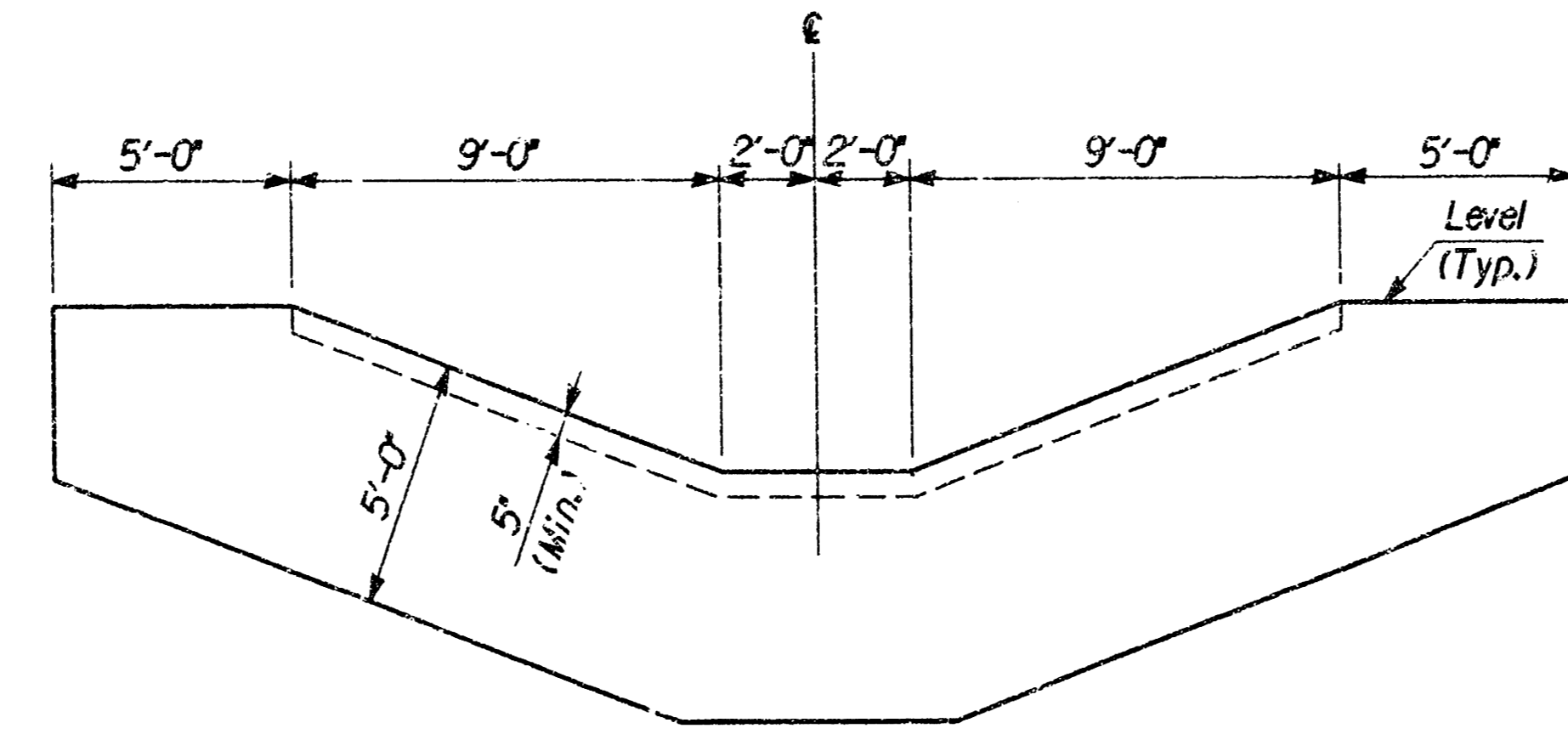


TYPICAL SECTION DITCH

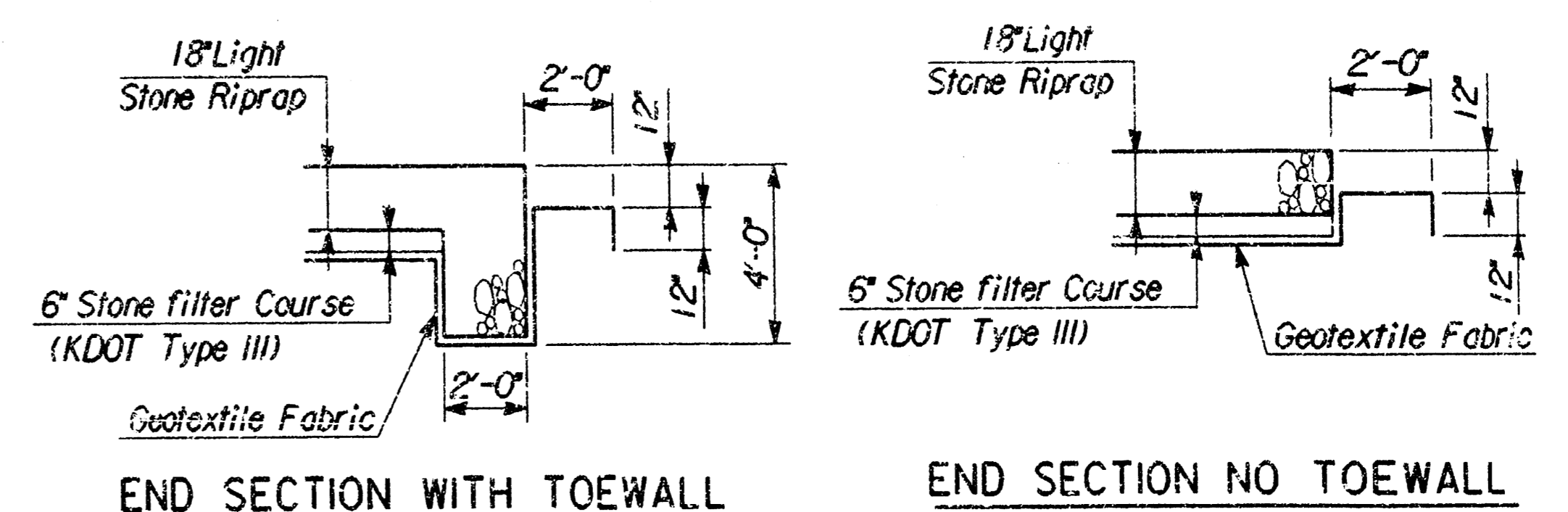
STA. TO STA.	SL	SR	
17+85	18+98	3:1	3:1
18+98	19+08	Trans.	Trans.
19+08	21+00	4:1	4:1
21+00	22+00	4:1	Trans.
22+00	23+94.33	4:1	3:1



TYPICAL SECTION



DOWNSTREAM END ELEVATION SHOWING TOEWALL (UPSTREAM END SIMILAR)



END SECTION WITH TOEWALL

END SECTION NO TOEWALL

LIGHT STONE RIPRAP

- ALL RIPRAP FOR THIS PROJECT SHALL BE NATURAL STONE. NEITHER BROKEN CONCRETE, FABRIC ENVELOPE NOR PREMIXED DRY PACKAGED CONCRETE BAG ALTERNATES WILL BE ALLOWED.
- RIPRAP SHALL NOT BE GROUTED ON THIS PROJECT.
- GEOTEXTILE FABRIC SHALL CONFORM TO THE REQUIREMENTS OF THE "STANDARD SPECIFICATIONS FOR STATE ROAD AND BRIDGE CONSTRUCTION", KDOT, 1990.

No.	Revisions	By	Date
TYPICAL SECTIONS & DRAINAGE DETAILS			
PROFESSIONAL ENGINEERING CONSULTANTS, P.A. ENGINEERS WICHITA, KANSAS			
Designed by	MWB, DRC	Checked by	
Drawn by	JGP	Date	AUG., 1994
		Job No.	94320

Drawing Name: usr/ustr/dgn/
 Drawn By:
 Plotted By:

MANHOLE FRAME AND COVER DETAIL

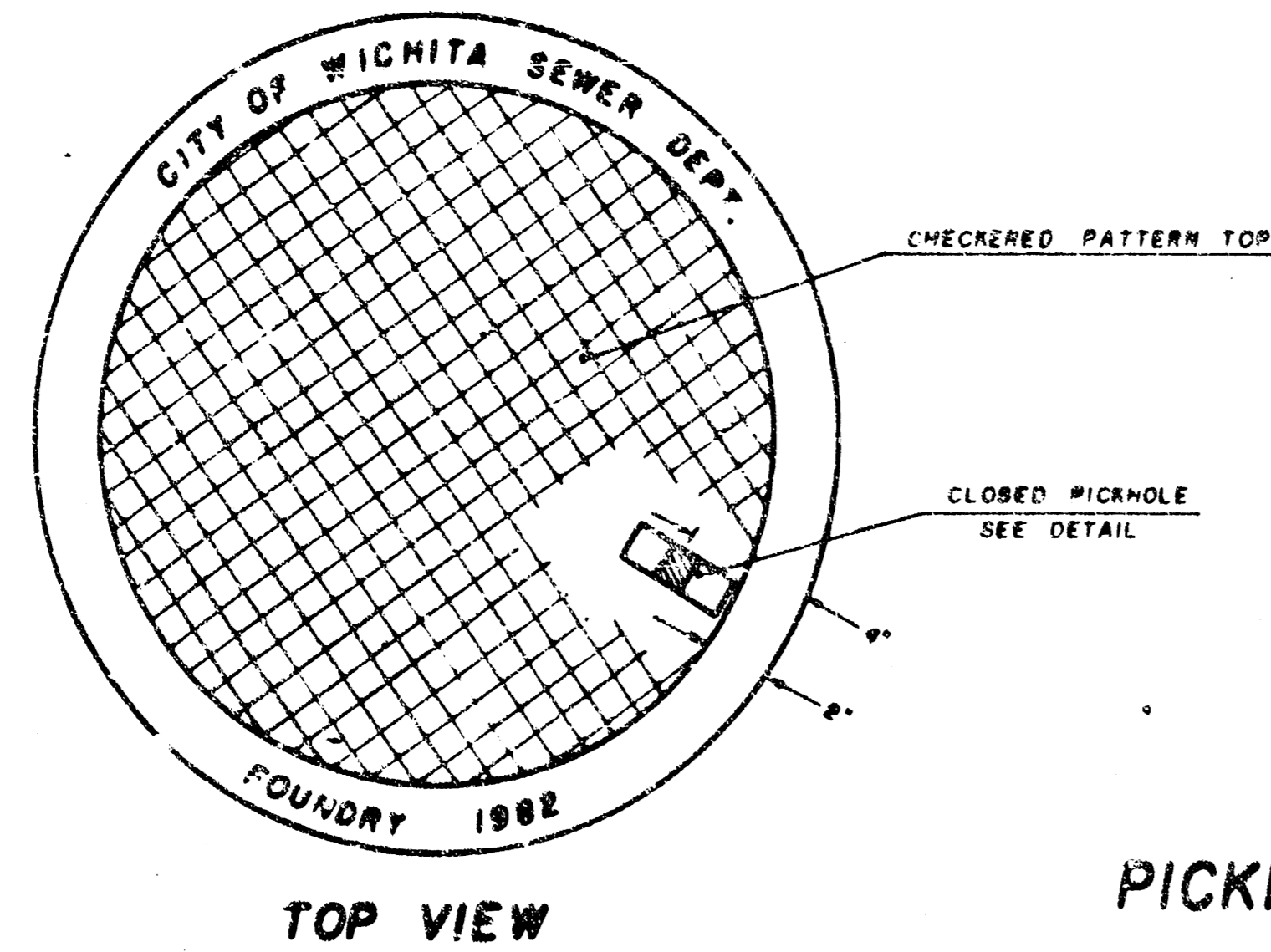
ADOPTED AS STANDARD DESIGN

BY

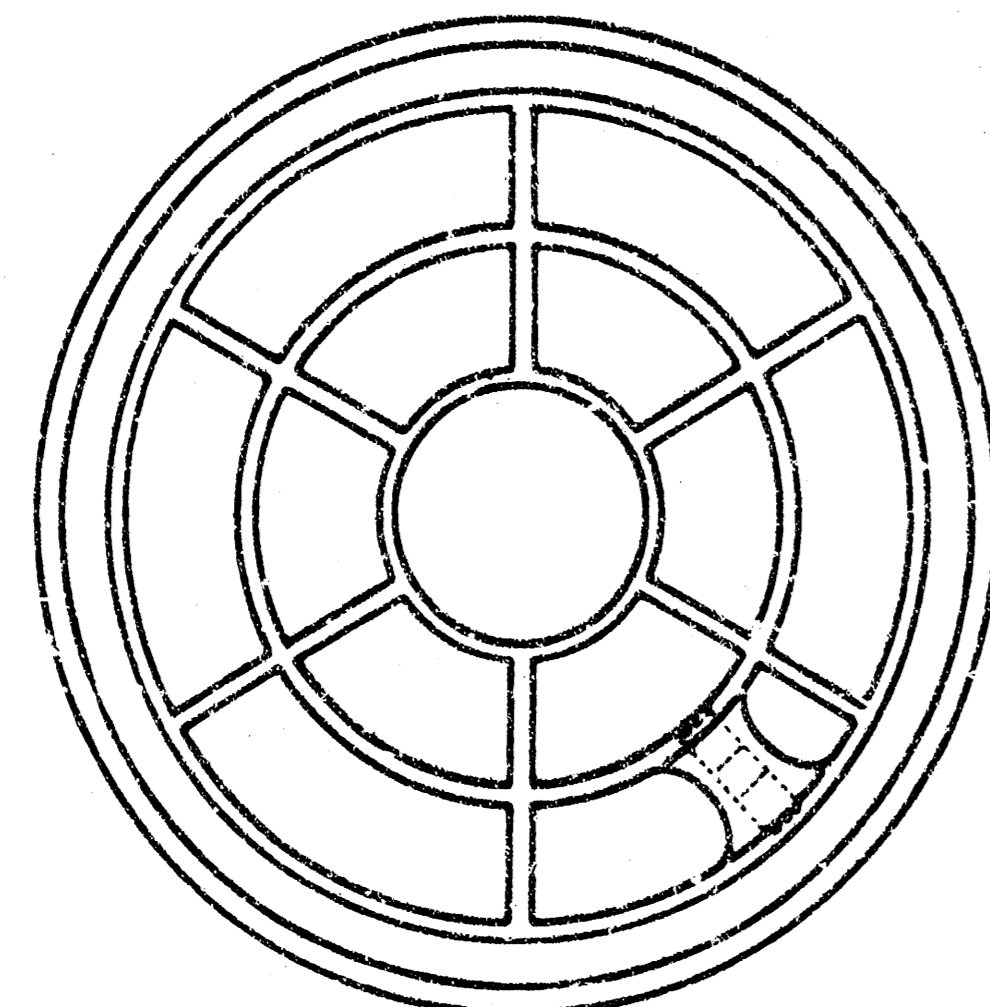
City of Wichita, Kansas

MANHOLE COVER

Weight: 180 Lbs.

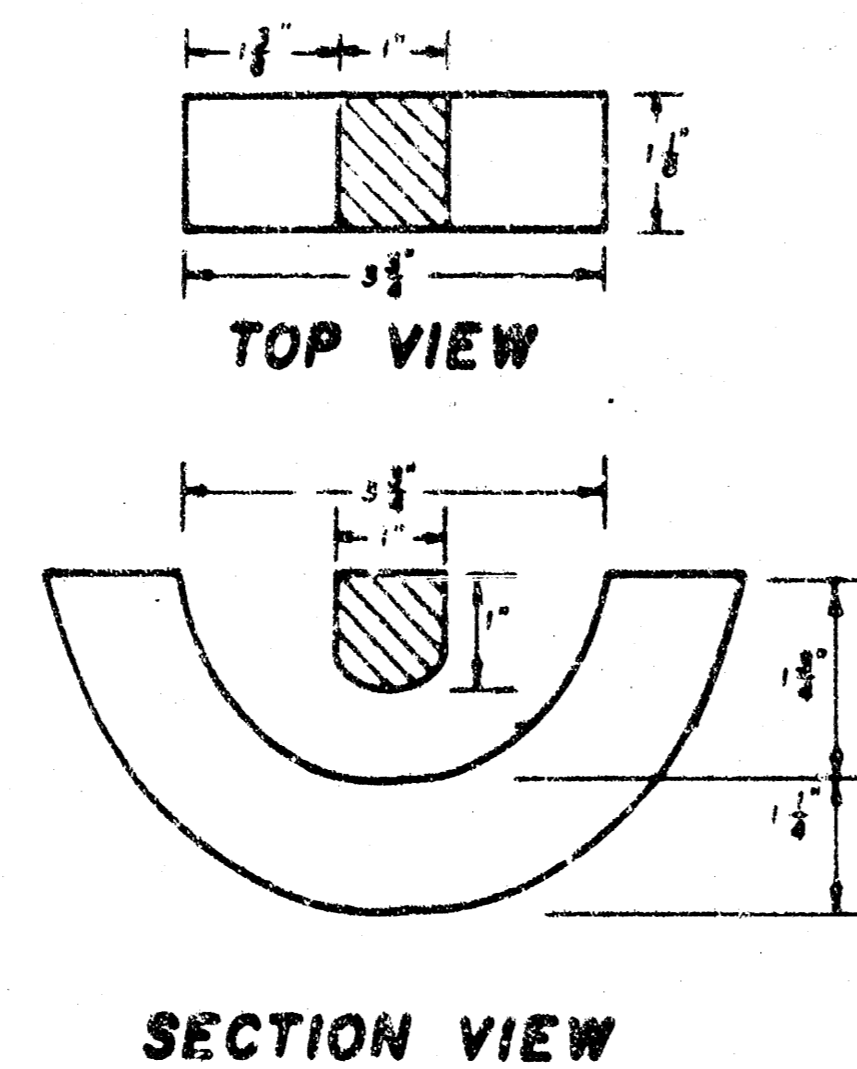


TOP VIEW



BOTTOM VIEW

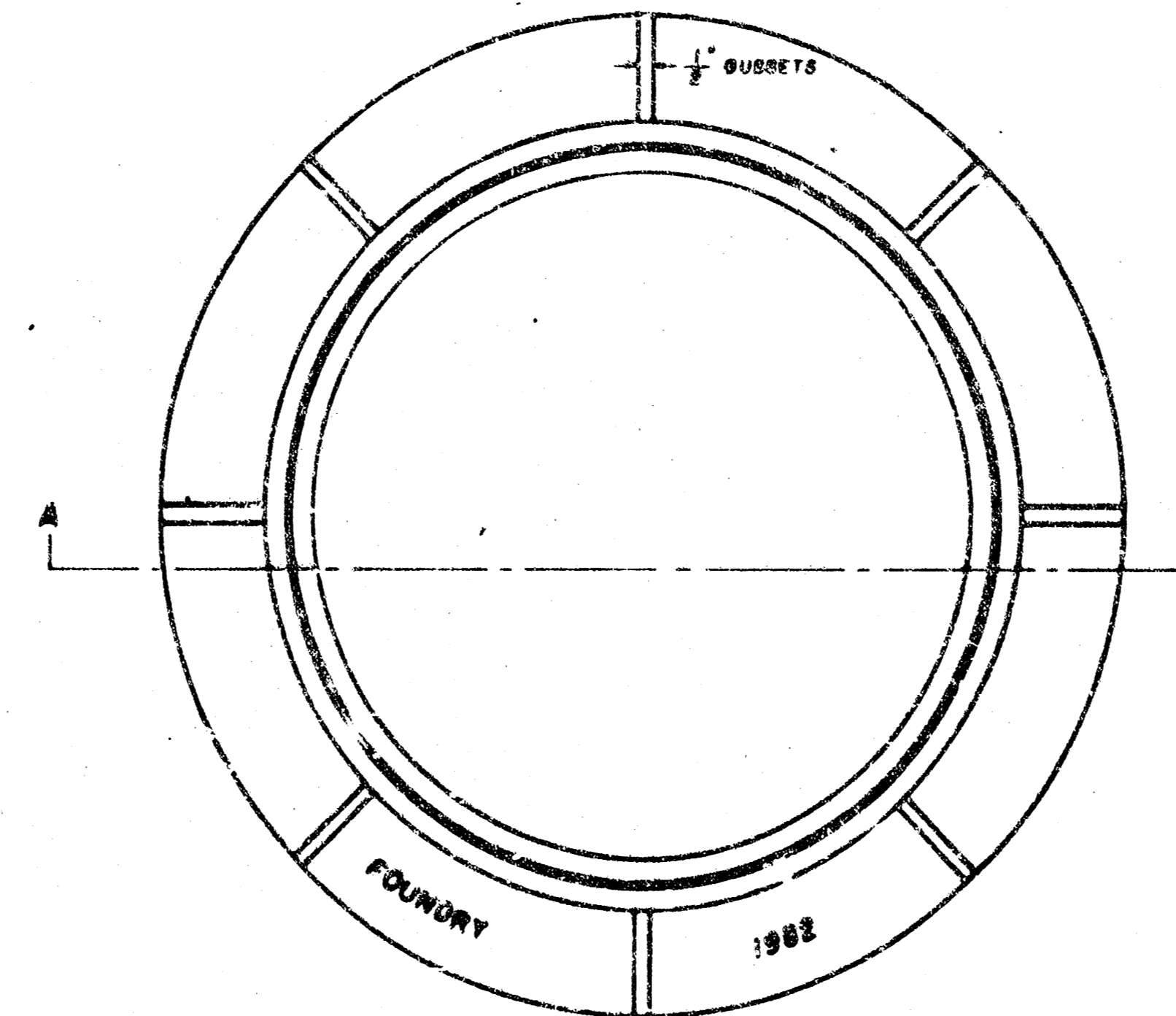
PICKHOLE DETAIL



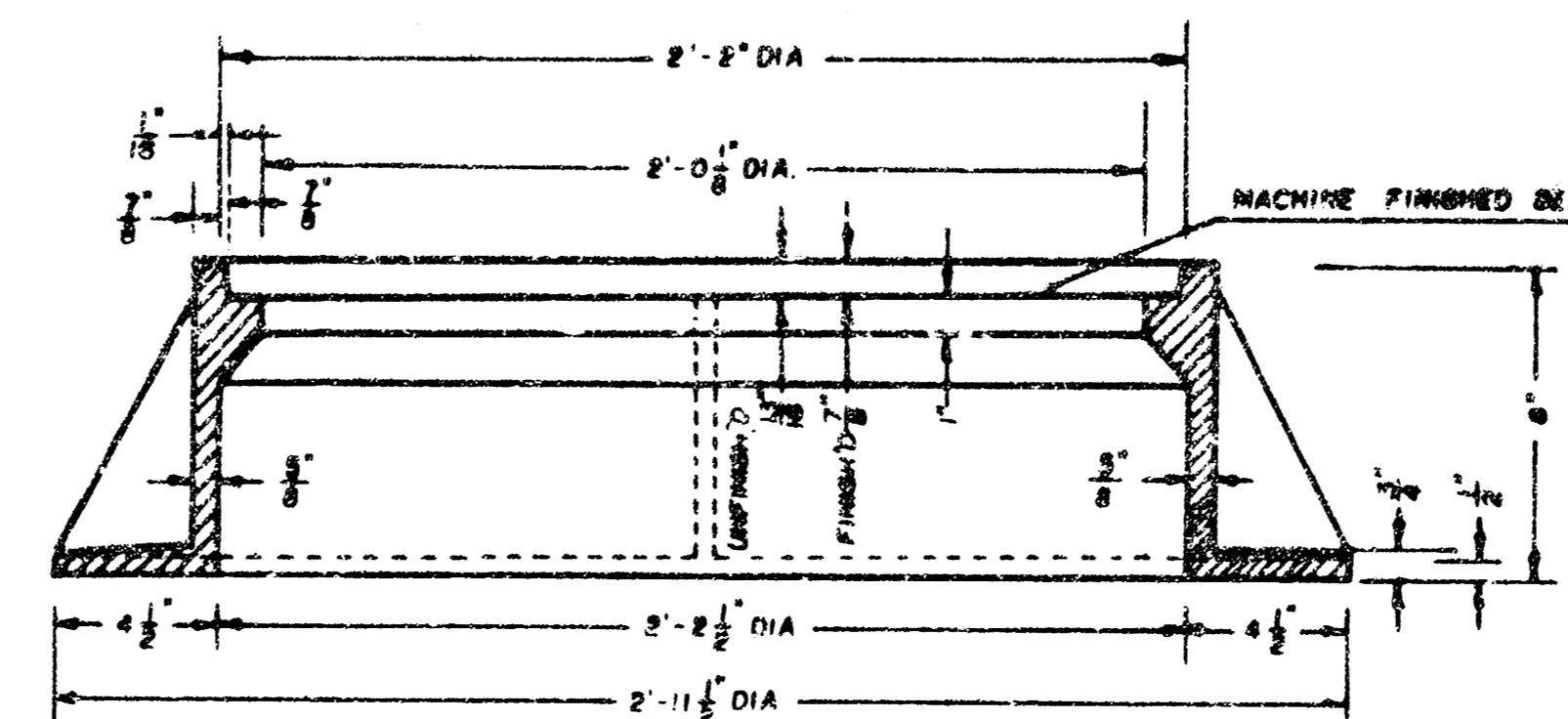
SECTION VIEW

MANHOLE FRAME

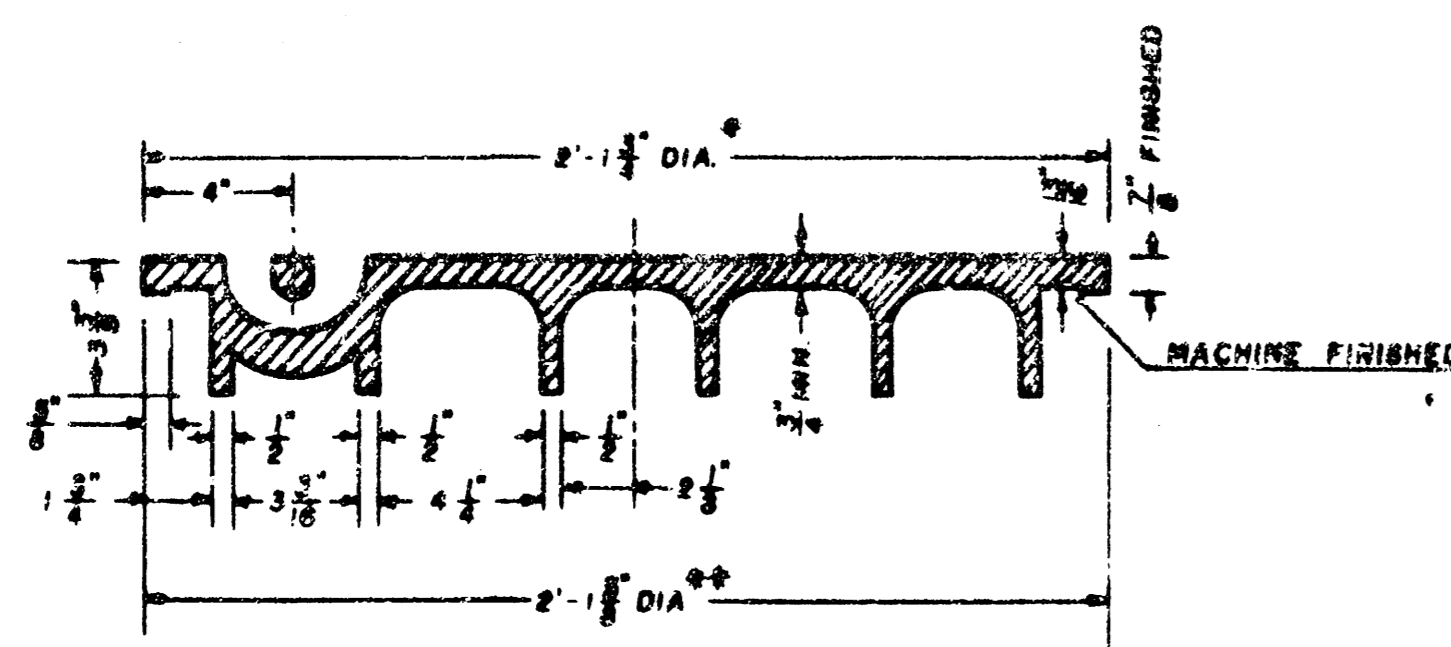
Weight: 240 Lbs.



TOP VIEW



SECTION A-A



SECTION VIEW

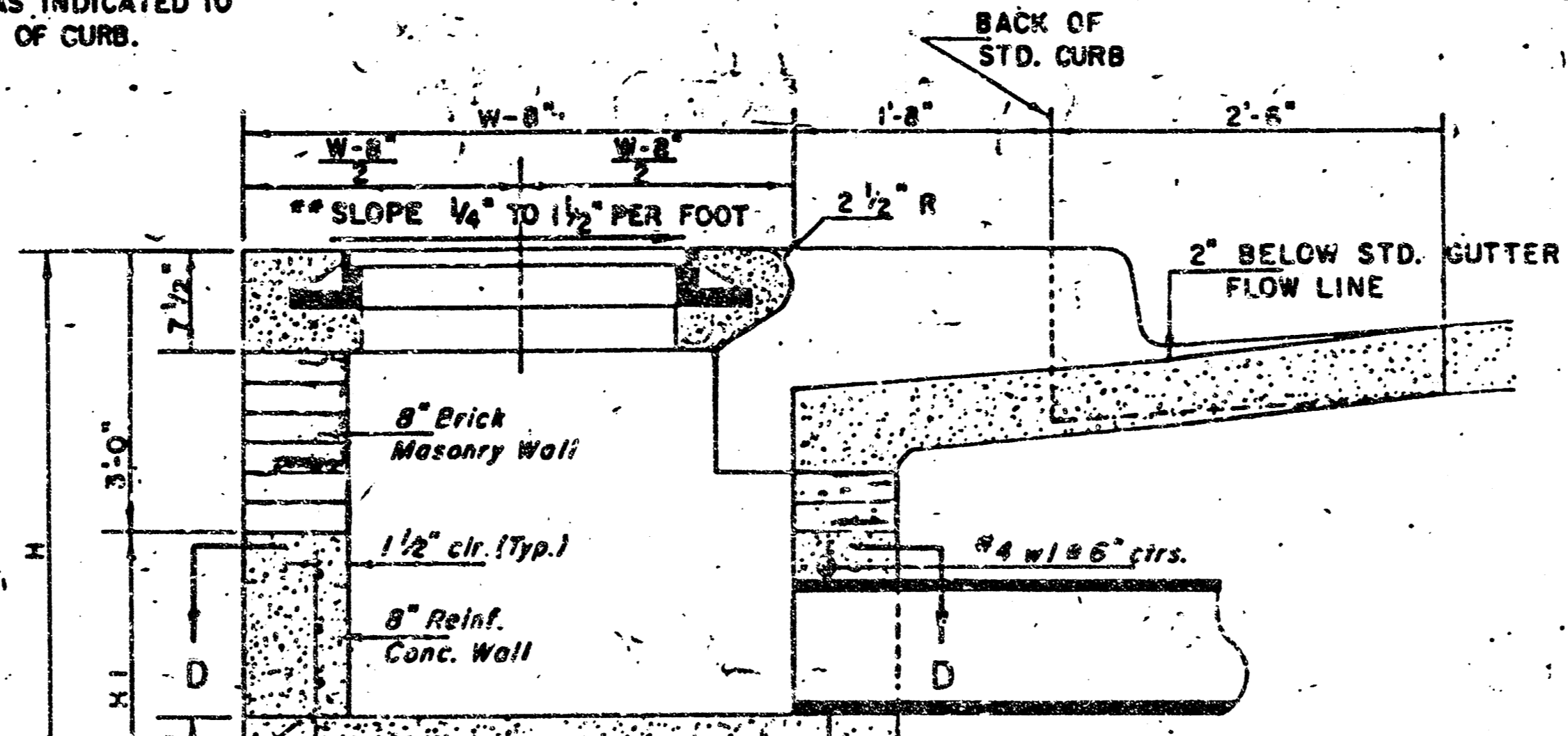
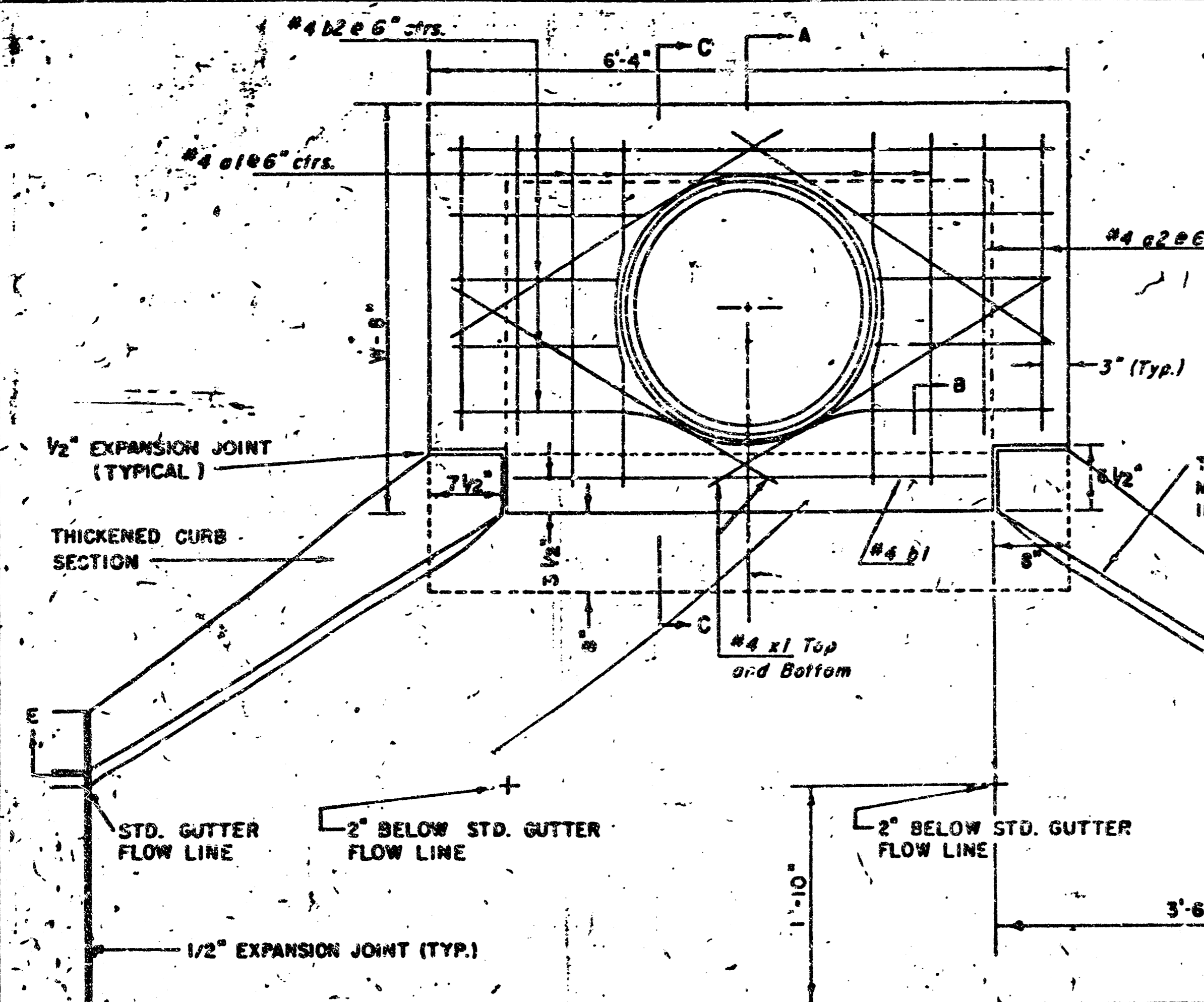
* OUTSIDE DIA. TOP OF COVER
** OUTSIDE DIA. BOTTOM OF COVER

GENERAL NOTES

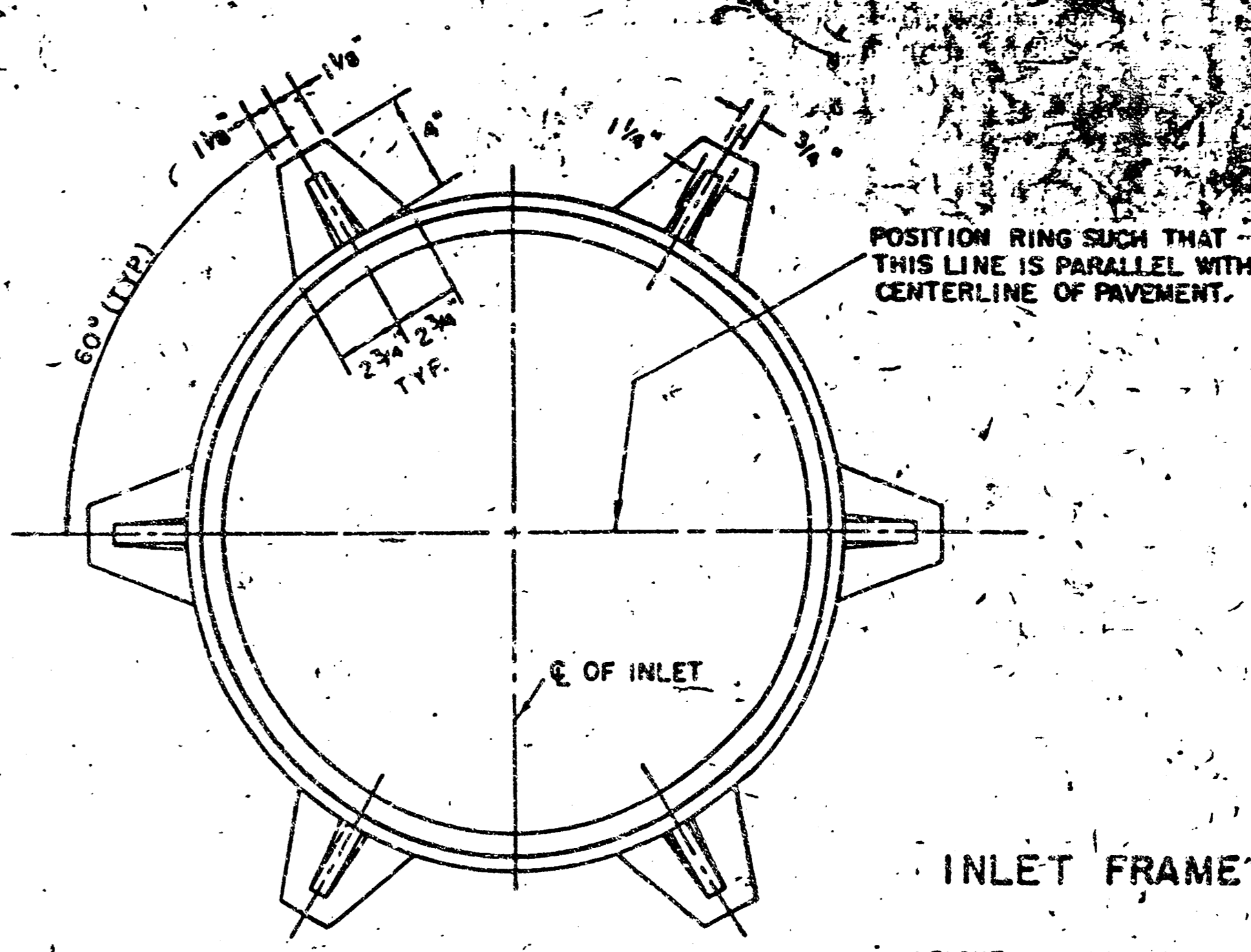
- MANHOLE CASTINGS SHALL BE MANUFACTURED USING GOOD QUALITY GRAY IRON CONFORMING TO CLASS 30 OF A.S.T.M. DESIGNATION A-48. DIMENSIONS AND WEIGHTS SHOWN ON THE DETAILED DRAWINGS SHALL BE CONSIDERED AS MINIMUM REQUIREMENTS AND ANY DEVIATIONS FROM THE DIMENSIONS SHOWN MUST BE SPECIFICALLY APPROVED. THE FINISHED CASTINGS SHALL BE OF UNIFORM QUALITY, FREE FROM BLOWHOLES, POROSITY, HARD SPOTS, SHRINKAGE DISTORTIONS OR OTHER DEFECTS.
- MANHOLE CASTINGS SHALL BE COATED WITH AN ASPHALT PAINT RESULTING IN A SMOOTH, TUGH AND DURABLE COATING WHICH IS NOT BRITTLE OR TACKY.
- MANHOLE CASTINGS SHALL BE MANUFACTURED SUCH THAT A COVER MANUFACTURED BY ANY ONE FOUNDRY WILL FIT INTERCHANGEABLY INTO A FRAME MANUFACTURED BY ANOTHER FOUNDRY AND STILL MEET ALLOWABLE CLEARANCES AND NON-SOCKING REQUIREMENTS. THIS WILL REQUIRE MANUFACTURING OF THE MATCHING FACES ON THE COVER AND THE FRAME TO CLOSE TOLERANCES.
- THE OUTSIDE CIRCUMFERENCE OF THE VERTICAL FACE OF THE COVER AND THE INSIDE CIRCUMFERENCE OF THE VERTICAL FACE IN THE FRAME EXCESS SHALL BE MANUFACTURED TO TOLERANCES SUCH THAT THE CLEARANCE BETWEEN THE COVER AND FRAME WILL NOT EXCEED 1/8" AT ANY POINT AROUND THE CIRCUMFERENCE OF THE COVER. THE SEATING SURFACES BETWEEN THE COVER AND FRAME SHALL BE MACHINED SUCH THAT THESE SURFACES SHALL MAKE FULL CONTACT FOR THEIR FULL CIRCUMFERENCE TO PRECLUDE THE COVER FROM ROCKING IN THE FRAME.
- THE MANHOLE FRAME AND COVER SHALL BE MARKED WITH LETTERING INDICATING THE NAME OF THE MANUFACTURER AND THE YEAR WHEN THE COVER OR FRAME WAS CAST. THE COVER SHALL BE FURTHER IDENTIFIED WITH REGARDS TO OWNERSHIP USING LETTERS AT LEAST 1" IN HEIGHT. THIS IDENTIFICATION SHALL BE "CITY OF WICHITA SEWER DEPARTMENT". THE WORD "REPAIR" MAY BE ABBREVIATED. THE TEXTURE OF THE TOP SURFACE OF THE COVER SHALL BE MANUFACTURED IN A CHECKERED PATTERN DESIGN AS INDICATED ON THE DRAWINGS. WHITE BLOCKOUTS SHALL BE UTILIZED TO HIGHLIGHT THE LETTERING ON THE COVER SURFACE. THE TOTAL AREA OF WHITE SURFACE BLOCKOUT SHALL NOT EXCEED THE AREA AS INDICATED ON THE DRAWING. POSITIONINGS OF SMOOTH BLOCKOUTS AND LETTERING MAY VARY FROM THAT SHOWN ON THE DETAILED DRAWING.

No.	Revised	Of	Sizes
CITY OF WICHITA, KANSAS			
MANHOLE FRAME & COVER DETAIL			
PROJ. NO. 472-75-242 -000-000-000			
PROFESSIONAL ENGINEERING CONSULTANTS, P.C.			
WICHITA, KANSAS			
Designed by	Job No.	Sheet	8 of 10
Drawn by			

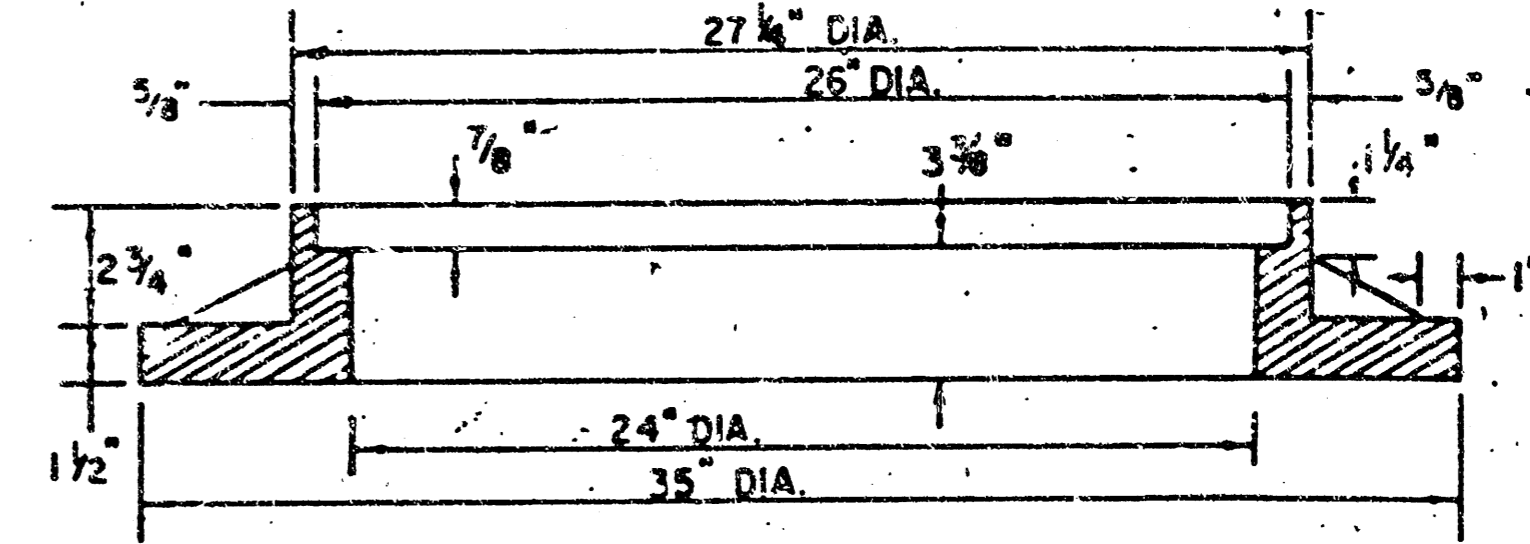
NOTE: INLET TOP REINFORCING SHALL BE SPACED ON 6" MAX. CENTERS. INLET LIDS SHALL BE NOTCHED OUT AS INDICATED TO FACILITATE CONSTRUCTION OF CURB.



NOTE: CONCRETE TOPS TO BE INSTALLED ON THIN MORTAR CUSHION TO INSURE FULL SUPPORT ALONG BRICK WALLS. CONCRETE TOPS MAY BE CAST IN PLACE OR PRECAST. CONCRETE USED FOR INLET CONSTRUCTION SHALL BE CONCRETE PAVEMENT MIX WITH AIR ENTRAINMENT.



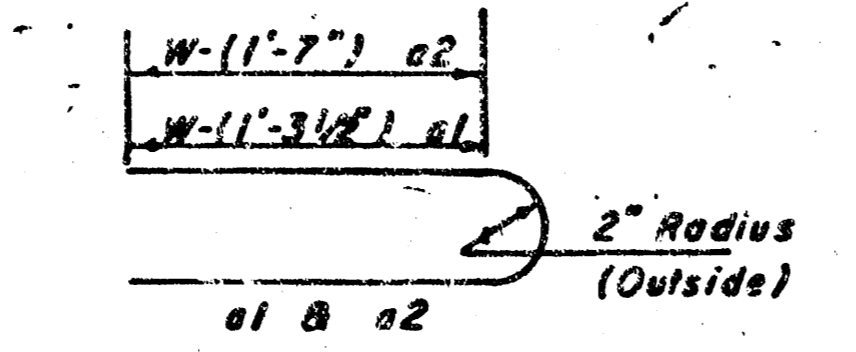
WEIGHT = 180 LBS.



SEE CITY OF WICHITA STANDARD MANHOLE FRAME AND COVER DETAIL SHEET FOR COVER DETAILS TO BE USED WITH INLET FRAME.

NOTE: EXPANSION JOINT ONLY IN CURB AREA WITH CONC. PAVEMENT.

PLAN



BENDING DIAGRAM

NOTE: CONTRACTOR SHALL HAVE THE OPTION OF CONSTRUCTING 8" BRICK MASONRY WALLS BETWEEN THE CONCRETE INLET BASE AND TOP ON THIS INLET WHEN W = 6'-4" AND H = 7'-0" OR LESS.

ADDITIONAL CURB AND GUTTER CONSTRUCTION NECESSARY TO CONNECT SET-BACK INLET TO PAVEMENT WILL BE PAID FOR AT THE UNIT PRICE BID FOR EACH INLET HOORUP.

INLET INVERT SHALL BE SHAPED WITH 8 SACK SAND MIX CONCRETE TO CREATE FLOW CHANNELS AND TO INCREASE HYDRAULIC EFFICIENCY SUCH THAT THE INLET WILL BE SELF CLEANING BETWEEN ALL INLET AND/OR OUTLET PIPES.

THE ENDS OF ALL PIPES INSTALLED IN INLETS SHALL BE CUT OFF FLUSH WITH THE INSIDE FACE OF THE INLET WALL.

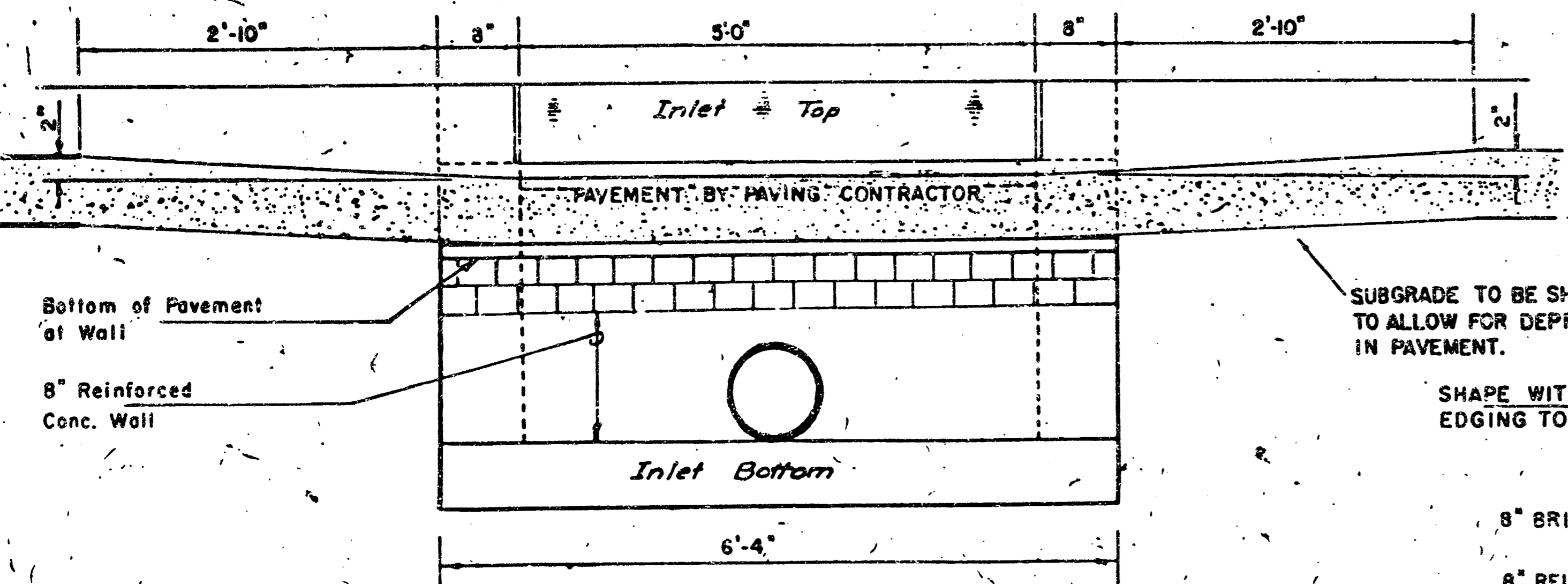
NOTE: Slope of Inlet Tops to match Sidewalk or Parking Slopes within Limits Indicated.

PRECAST SLAB AND FLOOR REINFORCING							
Mark	Size	No.	Length	No.	Length	No.	Length
a1	#4	6	5'-7"	6	8'-7"	6	10'-7"
a2	#4	4	6'-0"	4	8'-0"	4	10'-0"
a3	#4	13	4'-1"	13	5'-1"	13	7'-1"
b1	#4	1	4'-9"	1	4'-9"	1	4'-9"
b2	#4	23	6'-1"	29	6'-1"	35	6'-1"
c1	#4	8	3'-10"	8	4'-2"	8	4'-6"

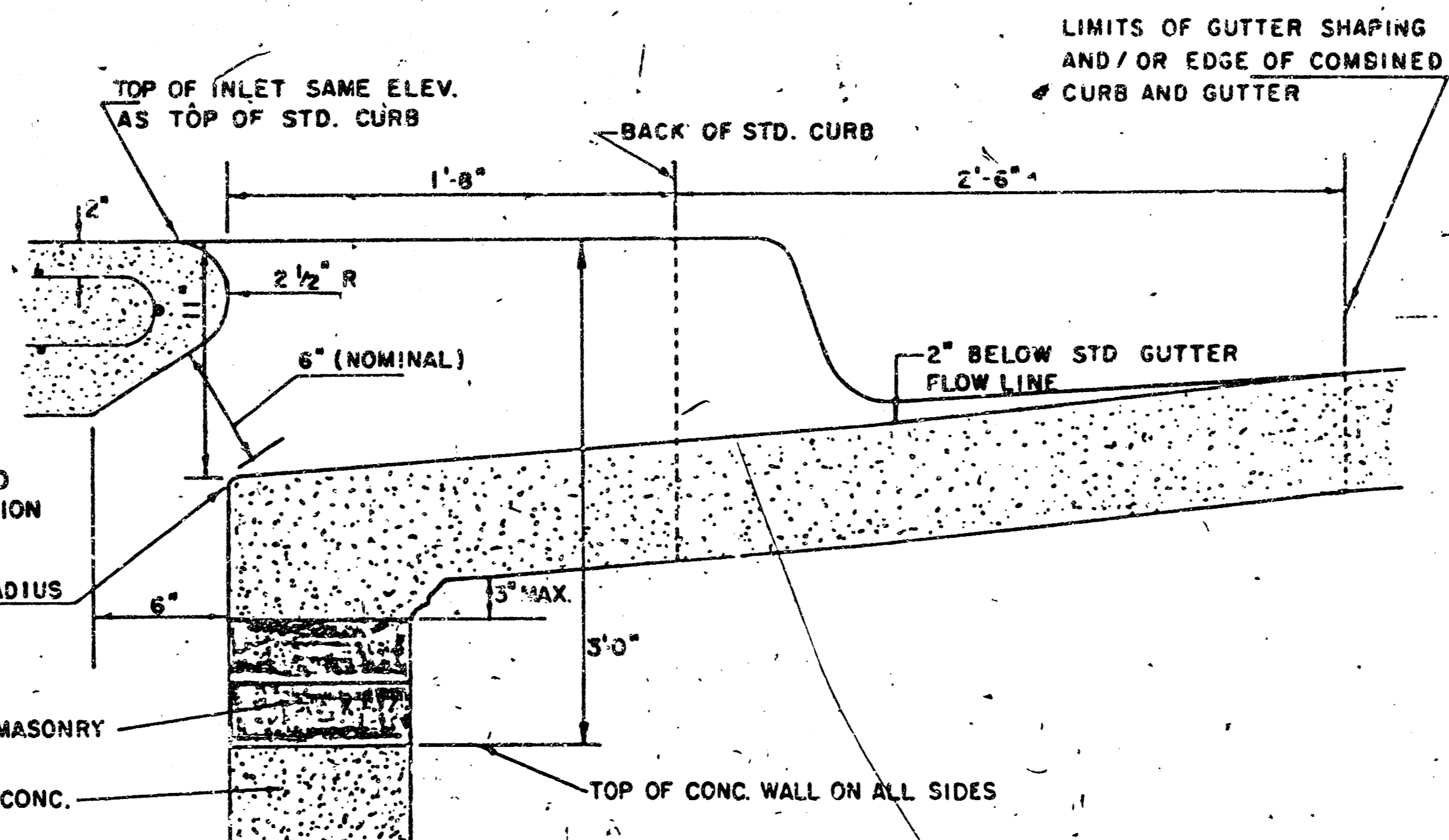
WALL REINFORCING							
Mark	Size	No.	Length	No.	Length	No.	Length
w1	#4	1	6'-1"	1	6'-1"	1	6'-1"
w2	#4	1	4'-1"	1	5'-1"	1	7'-1"
w3	#4	32	2	36	2	40	2

STANDARD CURB INLET PRECAST TOPS				
W	PRE-CAST TOP SIZE	PIPE SIZE	CU. YD. CONC.	
4'-4"	3'-6" x 4'-4" x 7 1/2"	21" & SMALLER	0.38 ±	
5'-4"	4'-8" x 6'-4" x 7 1/2"	24" & 30"	0.51 ±	
6'-4"	5'-6" x 6'-4" x 7 1/2"	36" & 42"	0.84 ±	
7'-4"	6'-8" x 6'-4" x 7 1/2"	48" & 54"	0.77 ±	
8'-4"	7'-8" x 6'-4" x 7 1/2"	60" & 66"	0.90 ±	

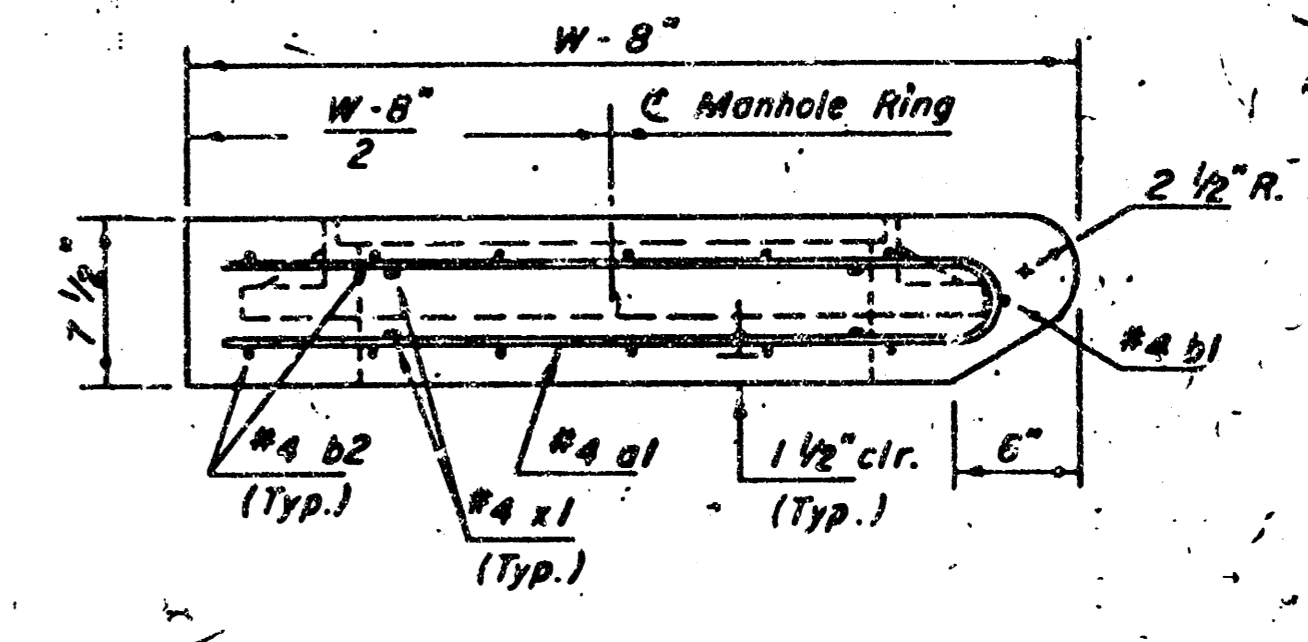
* Field bend or cut Reinforcing as required for clearance.
 ① #11-12"; #11-12" Round down to nearest 0.5"
 ② #1-3"



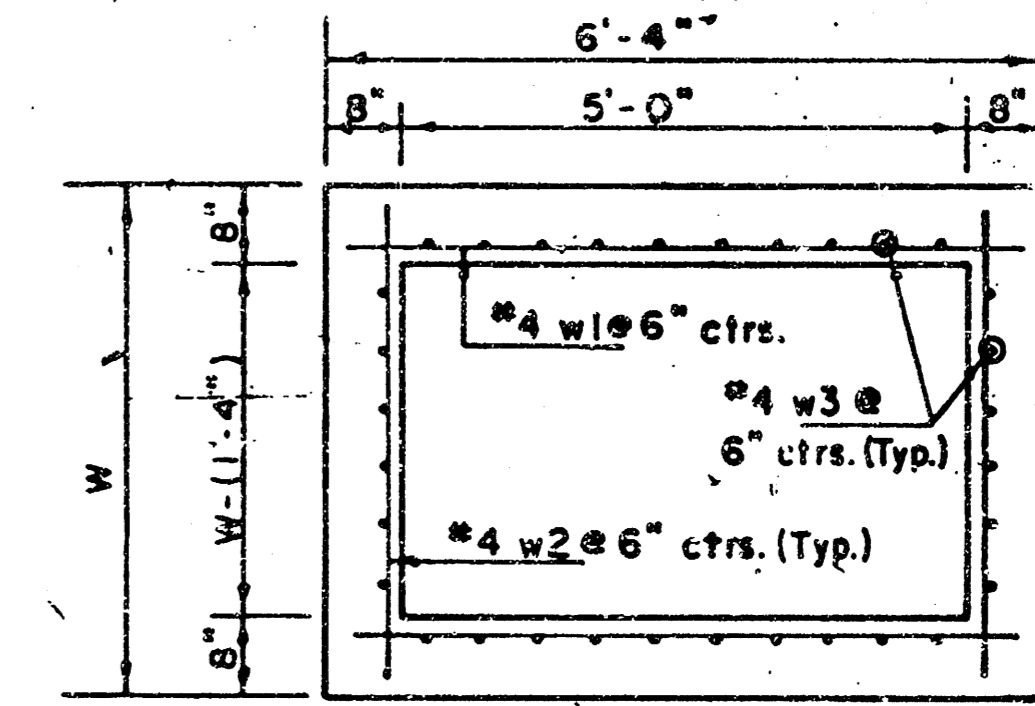
SECTION E-E



SECTION B-B



SECTION C-C



SECTION D-D

REVISED 11-30-1983
 REVISED 12-3-1984 Revised 2-15-1989

DETAIL STANDARD TYPE IA CURB INLET
 CITY OF WICHITA, KANSAS
 INLET OPENING = 6" x 5'0"

JUNE 1984

PHI 2ND ADDITION

WICHITA, SEDGWICK COUNTY, KANSAS

State of Kansas) SS We, Baughman Company, P.A., Surveyors in
Sedgwick County) and state do hereby certify that we have
surveyed and plotted "PHI 2ND ADDITION", Wichita, Sedgwick
County, Kansas and that the accompanying plot is a true and
correct exhibit of the property surveyed, described as and being a
replot of Lot 1, Phi Addition, Wichita, Sedgwick County, Kansas,
EXCEPT that part described as beginning on the west line of
said Lot 1, at a point 430.43 feet north of the S.W. Corner
of said Lot 1; thence N00°10'04"W, on said west line, a
distance of 300 feet to a corner in said west line; thence
N73°15'49"E, on the westerly line of said Lot 1, a distance of
125.63 feet to a corner in said westerly line; thence N63°21'49"E
on said westerly line a distance of 32.62 feet; thence S23°05'55"W;
a distance of 380.11 feet to the point of beginning, AND EXCEPT
that part described as beginning at the N.W. Corner of said Lot 1;
thence S10°09'01"E, on the west line of said Lot 1, a distance of
389.2E feet to a corner in said west line of said Lot 1; thence
N65°21'40"E, a distance of 109.88 feet; thence N00°09'01"W, a distance
of 343.48 feet, more or less, to the north line of said Lot 1;
thence S89°58'59"W, on said north line, a distance of
100 feet to the point of beginning.
Existing floodway reserve being vacated by virtue of
K.S.A. 12-512(b).

Baughman Company, P.A.

Gregory F. Severns
Surveyor

Know all men by these presents that we,
the undersigned owners, have caused the land described in
the surveyors certificate to be platted into Lots, and a
Street to be known as "PHI 2ND ADDITION", Wichita, Sedgwick
County, Kansas. The utility easement is hereby granted as in-
dicated for the construction and maintenance of all public utilities.
The street is hereby dedicated to and for the use of the public.
The drainage easement is hereby granted as indicated for drainage
purposes. The floodway reserves are hereby reserved for
floodway purposes and shall be the responsibility of Lot 1
and Lot 2 respectively until such time as the appropriate
governing body elects to assume the responsibility for maintenance
and improvements of the drainage. No buildings shall be
constructed on or within said floodway; nor shall any fill, change
of grade, creation of channel or other work be carried on
without the permission of said appropriate governing body.
With such permission of said appropriate governing body,
additional improvements and/or activities may be permitted
within said floodway. Access controls as depicted on the
face of the plot are hereby granted to the City of Wichita,
Kansas. The permitted entrance locations shall be as
determined by the City Engineer of the City of Wichita,
Kansas. The Minimum Building Pad Elevations for the
lowest opening to the structures are as shown on the
accompanying plot.

Pizza Hut, Inc.

Timothy Hauschild

Young Men's Christian Association of Wichita, Kansas

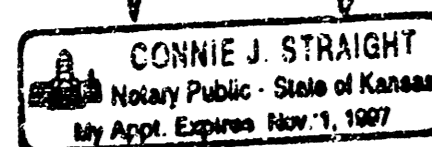
Bill Bunten

Bill Bunten
President of the Board

State of Kansas) SS The foregoing instrument was acknowledged
Sedgwick County) before me this 16th day of December, 1993, by Timothy Hauschild, V. Pres. & Co. Counsel, Pizza Hut, Inc., a Delaware
corporation, for and on behalf of the corporation.

My Appointment Expires Nov. 1, 1997

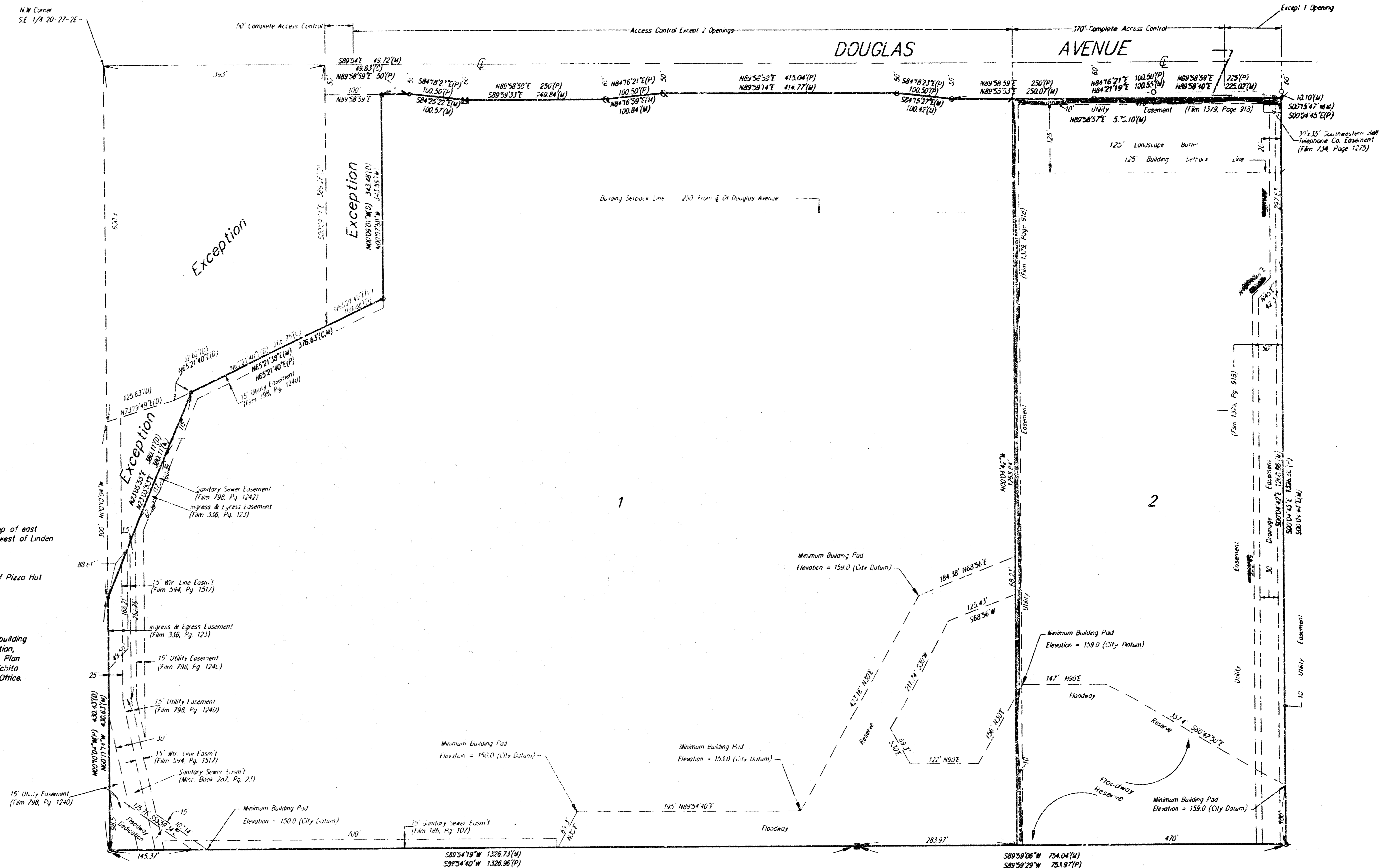
Connie J. Straight Notary Public



State of Kansas) SS The foregoing instrument was acknowledged
Sedgwick County) before me this 16th day of December, 1993, by Bill Bunten,
President of the Board, Young Men's Christian Association of Wichita,
Kansas, for and on behalf of the association.

My Appointment Expires April 25, 1997

Bonnie A. Wood Notary Public



This plot approved and all dedications
shown hereon accepted by the City Council of the City of Wichita,
Kansas, this ___ day of _____, 1993.

This plat of "PHI 2ND ADDITION", Wichita,
Sedgwick County, Kansas, has been submitted to and approved by
the Wichita-Sedgwick County Metropolitan Area Planning Com-
mission, Wichita, Kansas.
Dated this ___ day of _____, 1993.
Wichita-Sedgwick County Metropolitan Area Planning Commission.

James D. Miner
Chairman

Ma in S. Krout
Secretary

Elma Broadfoot
Mayor

Pat Burnett
City Clerk

Entered on transfer record this ___ day
of _____, 1993.

Susan E. Crockett-Spoon
County Clerk

State of Kansas) SS This is to certify that this plat has been
Sedgwick County) filed for record in the office of the Register of Deeds, this ___ day
of _____, 1993, at ___ o'clock ___ M, and is duly
recorded.

Pat Kettler
Register of Deeds

Ed Reso
Deputy