

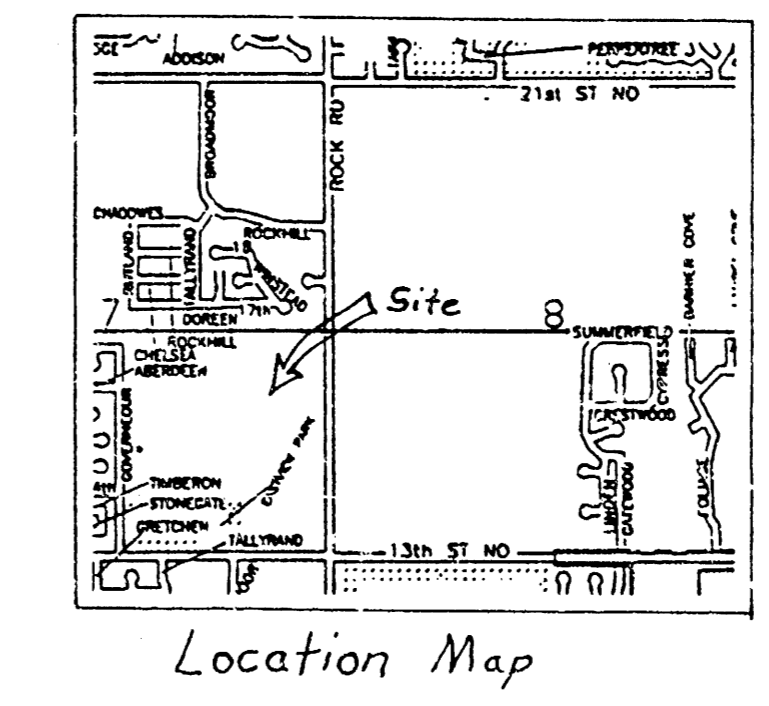
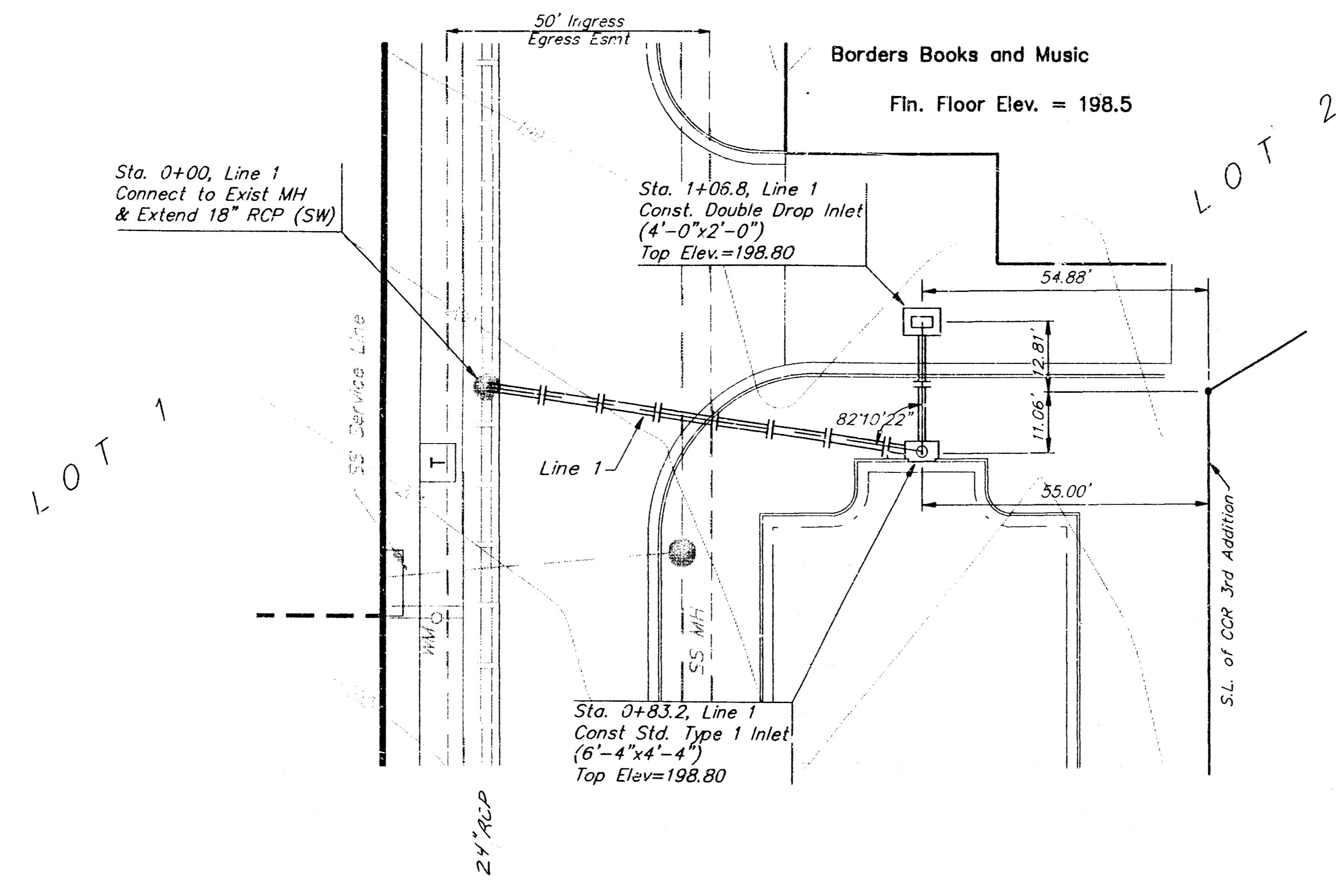
BENCH MARK #1
Cut "□" on Top of Curb on East Side of Rock Road Near the Northeast Corner of SE 1/4, Sec. 7, TWP 27S, R2E
Elev. = 202.41 City Datum

BENCH MARK #2
Cut "□" in Corner of the Back of Walk Located 72.89' South of West Line of Lot 1, CCR Second Addition.
Elev. = 192.91 City Datum

BENCH MARK #3
Cut "□" at East End of RCBC Headwall Located 23' North of East Line of CCR Second Addition, Lot 1.
Elev. = 194.69 City Datum

CCR 3rd Addition

Scale: 1" = 20' Horizontal
1" = 5' Vertical
● = Iron



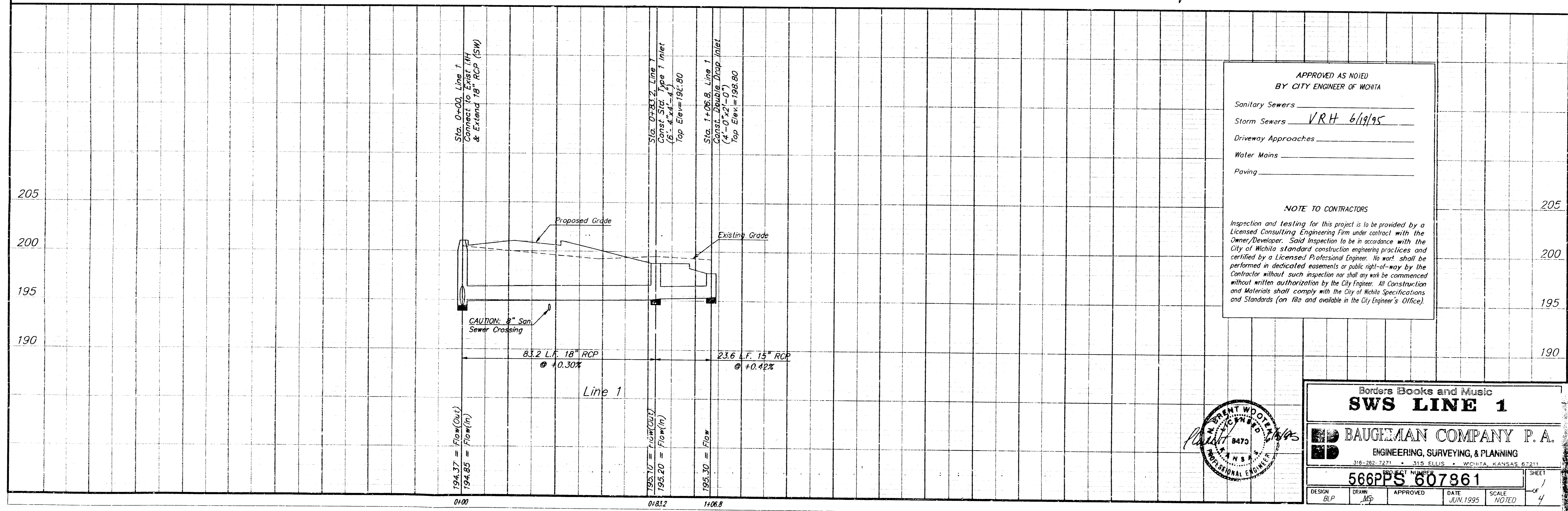
Booked
E-2
8/13/03
RDL

General Notes

- Contractor will be required to provide notice to utility companies a minimum of twenty-four (24) hours prior to any excavation, as follows:
 - Kansas One-Call 687-2470

The Contractor must notify the following in case of an emergency:

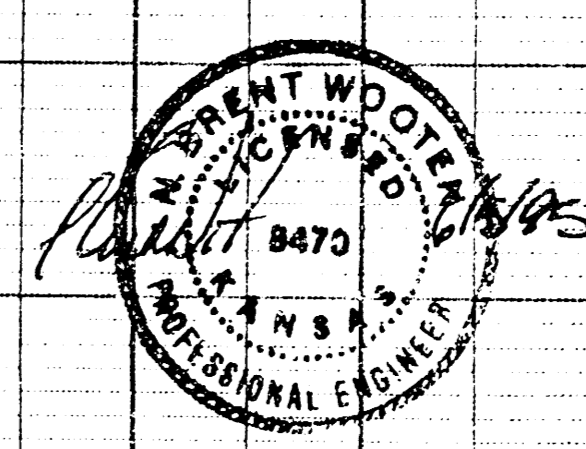
 - Cablevision 262-4270
 - K.P. L. Gas Service Company 263-7511
 - Kansas Gas & Electric Company 264-1141
 - Arkia Gas Company 942-8350
 - Southwestern Bell Telephone Company 1-571-2611
 - City of Wichita Water Department 268-4908
 - City of Wichita Sewer Maintenance 268-4071
- Underground utility service lines and overhead utility pole lines are to be adjusted as necessary by others prior to construction unless the plans specifically call for their adjustment by the Contractor or unless the plans specifically identify a utility to be adjusted by its owner during construction. Existing utilities and their location, as shown on the plans, represent the best information obtainable for design. The Contractor will be required to work around existing utilities within the right-of-way which do not conflict with proposed construction.
- The Contractor shall be responsible for preserving property irons. The Contractor will be required to re-establish any property irons which are damaged or destroyed by his construction operations. Such irons shall be re-established by a licensed land surveyor in accordance with state laws.
- All areas disturbed by construction operations shall be seeded with rye grass at a rate of 350 lbs. per acre immediately following construction in that area.
- All Lines are to be privately maintained.
- Contractor shall not start work on the project until the project inspector is assigned to the project and is present on the site. Any work done without inspection will be required to be uncovered for inspection.



APPROVED AS NOTED
BY CITY ENGINEER OF WICHITA

Sanitary Sewers _____
Storm Sewers VRH 6/19/95
Driveway Approaches _____
Water Mains _____
Paving _____

NOTE TO CONTRACTORS
Inspection and testing for this project is to be provided by a Licensed Consulting Engineering Firm under contract with the Owner/Developer. Said inspection to be in accordance with the City of Wichita standard construction engineering practices and certified by a Licensed Professional Engineer. No work shall be performed in dedicated easements or public right-of-way by the Contractor without such inspection nor shall any work be commenced without written authorization by the City Engineer. All Construction and Materials shall comply with the City of Wichita Specifications and Standards (on file and available in the City Engineer's Office).



Borders Books and Music
SWS LINE 1

BAUGEMAN COMPANY P. A.
ENGINEERING, SURVEYING, & PLANNING
316-262-7277 • 316-262-7278 • WICHITA, KANSAS 67211

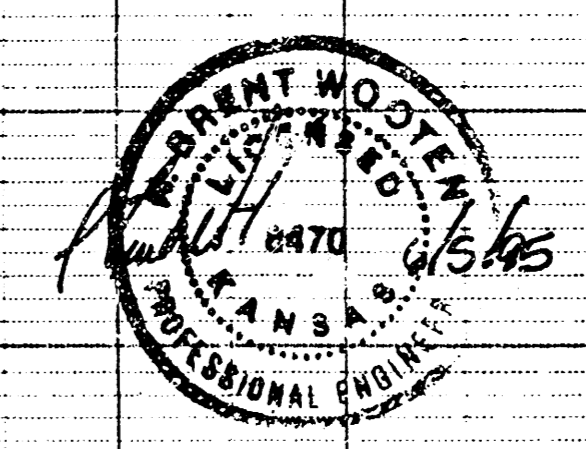
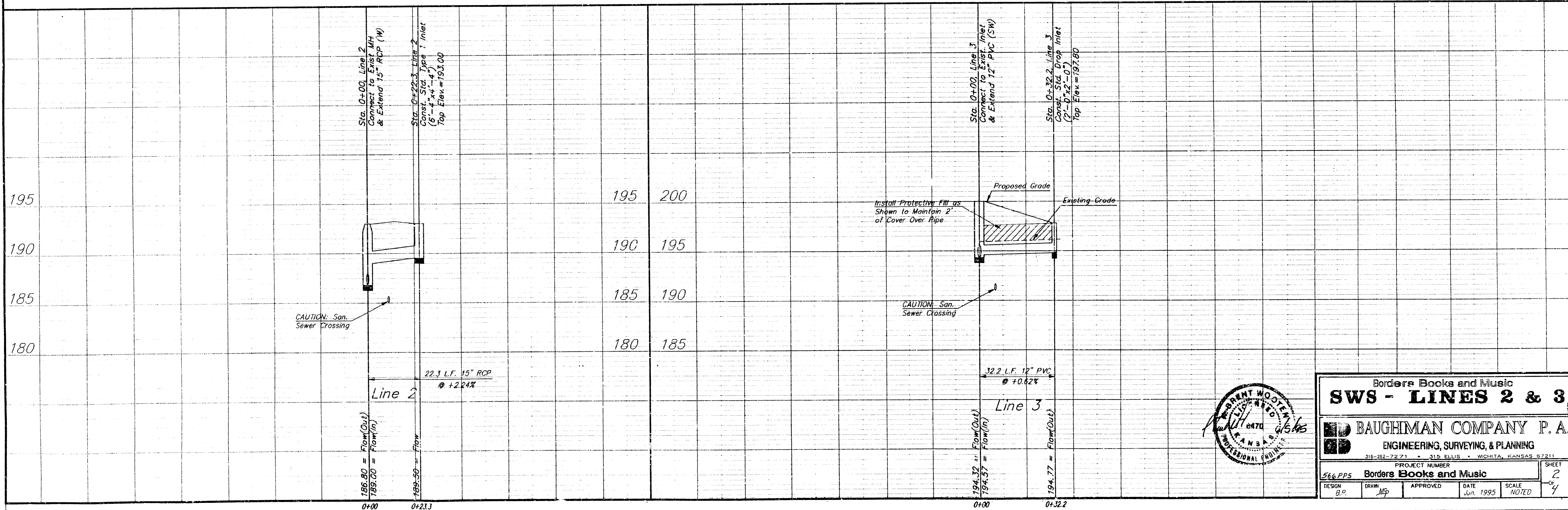
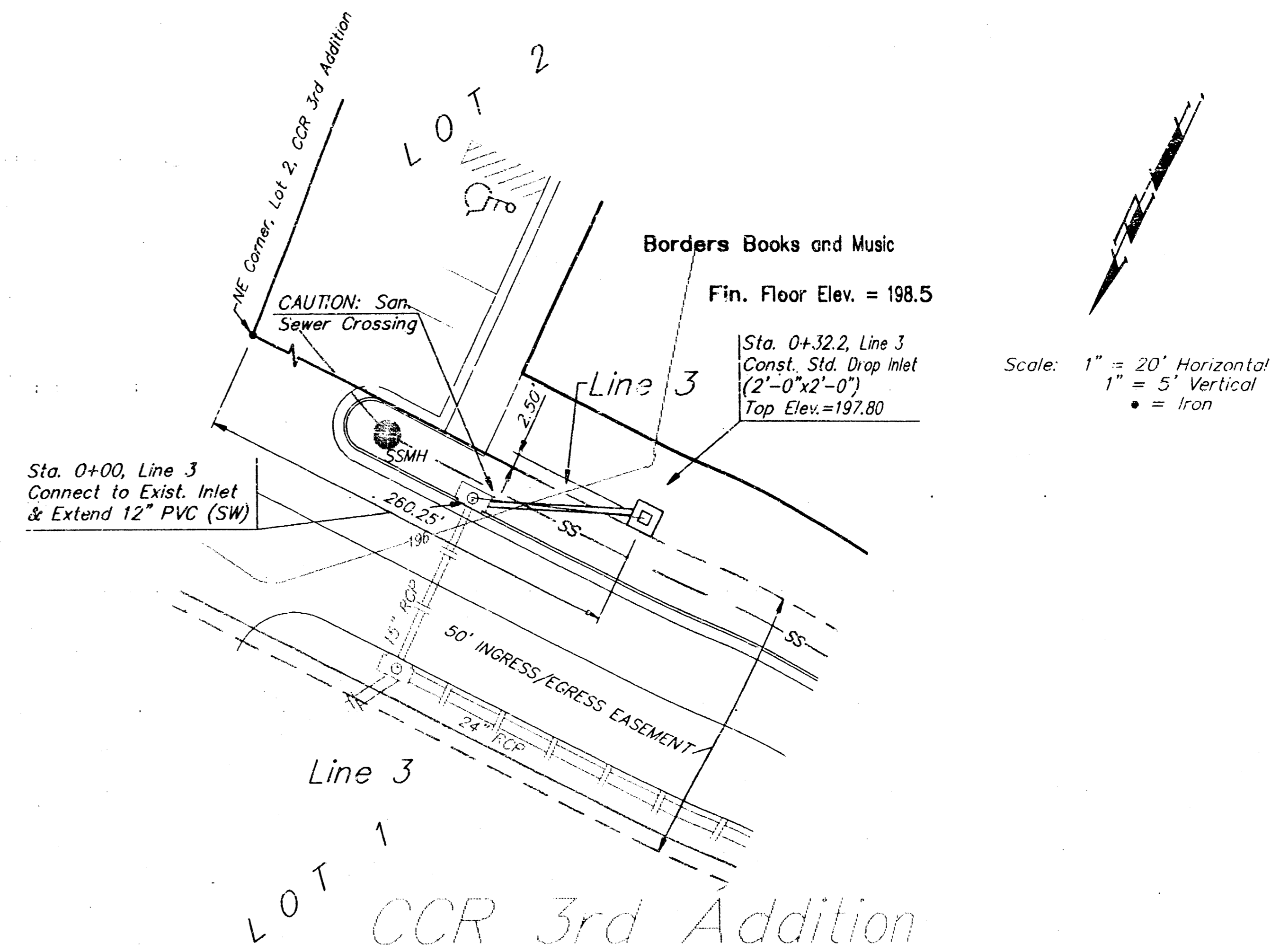
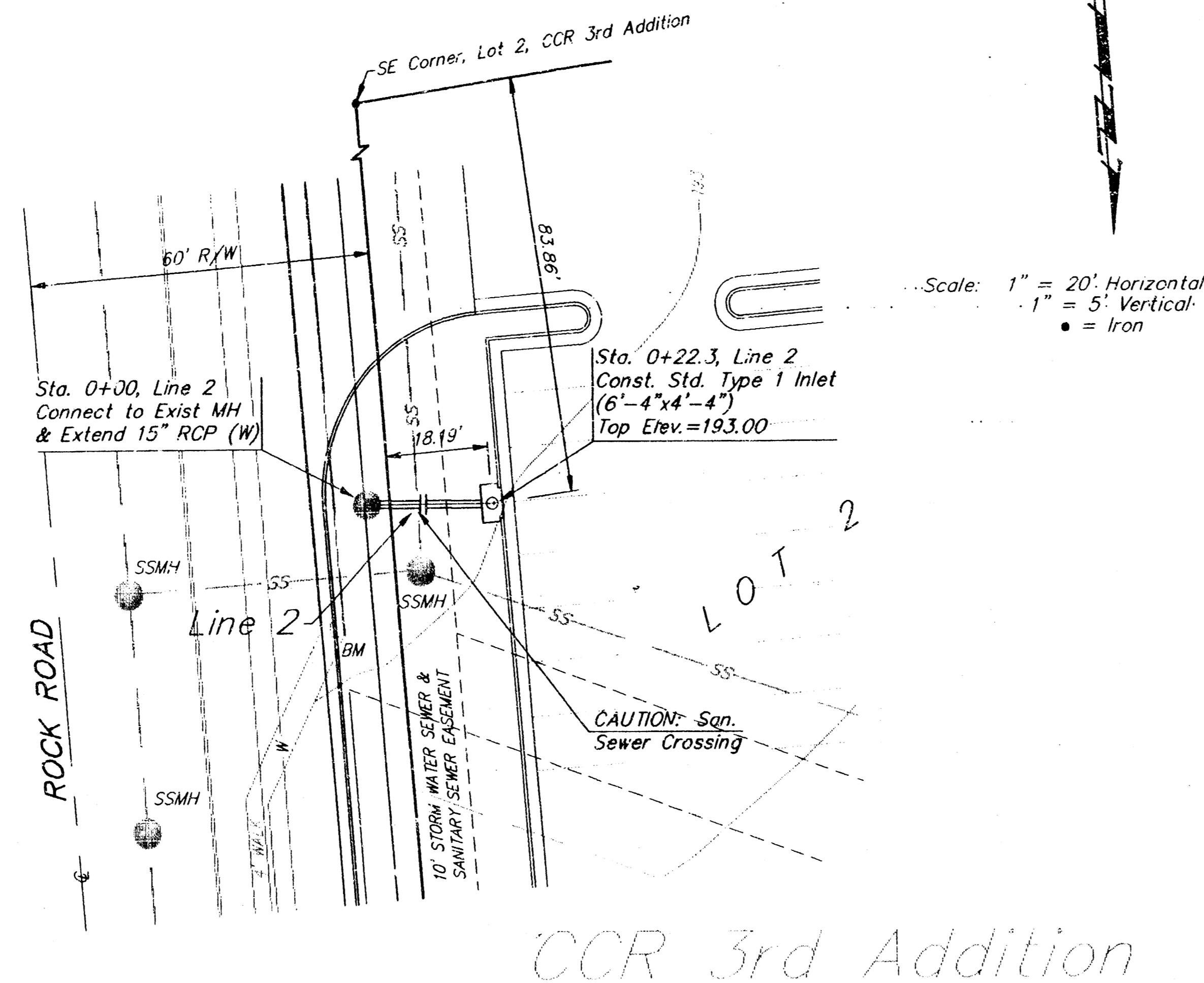
PROJECT NUMBER: **566PPS 607861**

DESIGN: BLP DRAW: MSP APPROVED: _____ DATE: JUN. 1995 SCALE: NOTED SHEET: 4

BENCH MARK #1
Cut "□" on Top of Curb on East Side of Rock Road Near the Northeast Corner of SE 1/4, Sec. 7, TWP 27S, R2E.
Elev. = 202.41 City Datum

BENCH MARK #2
Cut "□" in Corner of the Back of Walk Located 72.89' South of West Line of Lot 1, CCR Second Addition.
Elev. = 192.91 City Datum

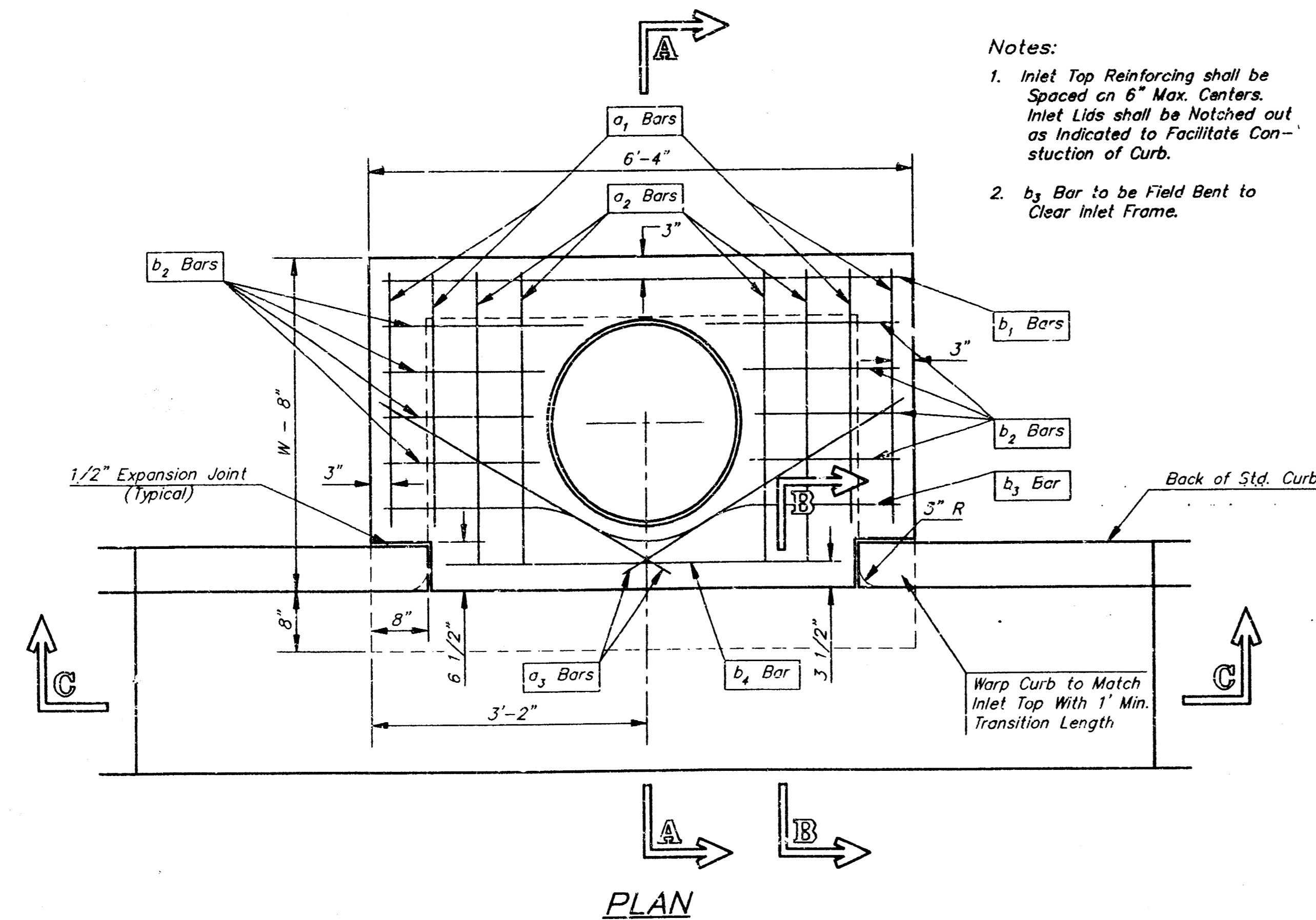
BENCH MARK #3
Cut "□" at East End of RCBC Headwall Located 23' North of East Line of CCR Second Addition, Lot 1.
Elev. = 194.69 City Datum



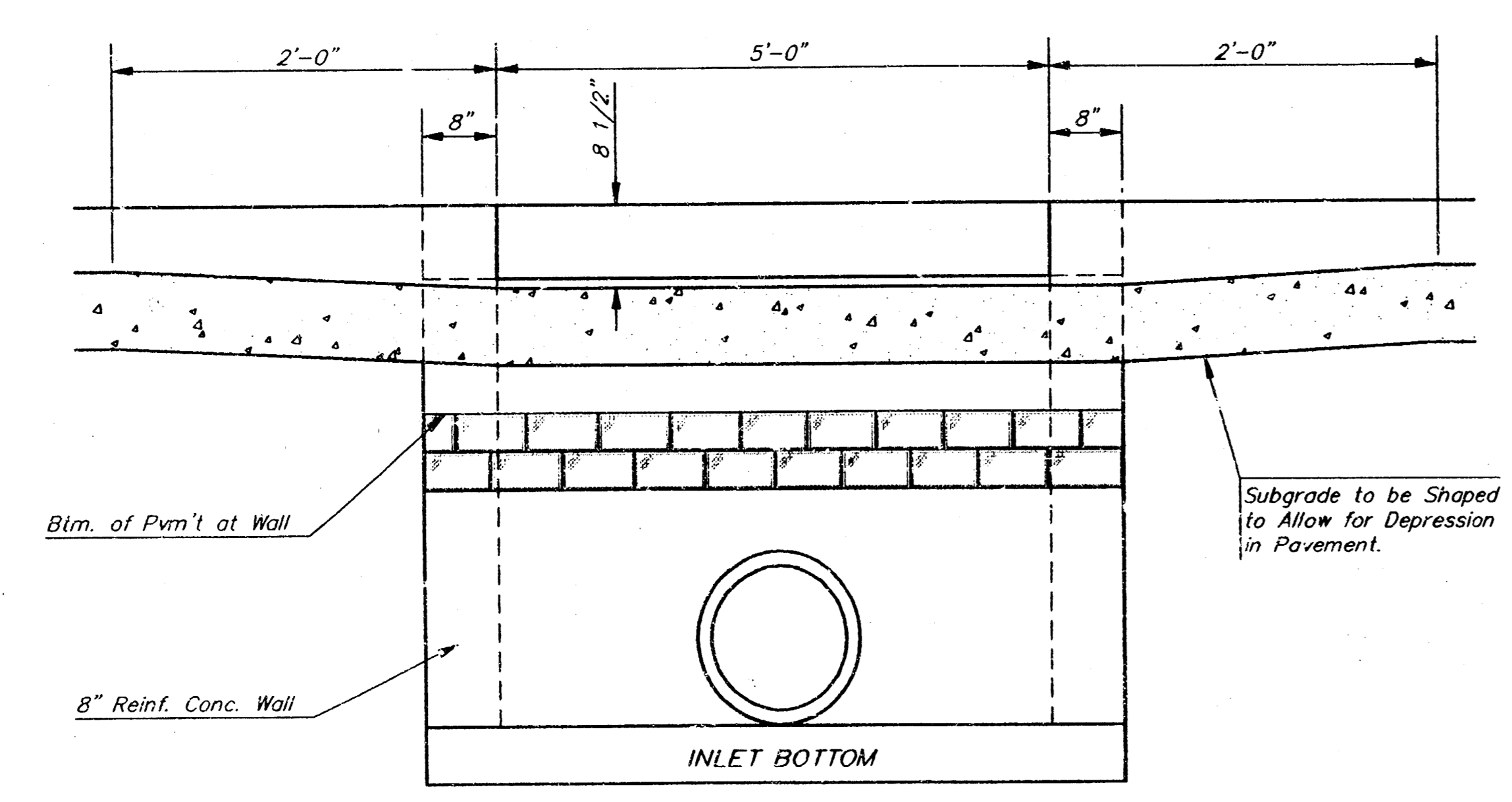
Borders Books and Music
SWS - LINES 2 & 3

BAUGHMAN COMPANY P.A.
ENGINEERING, SURVEYING, & PLANNING
316-262-7271 • 315 ELLIS • WICHITA, KANSAS 67211

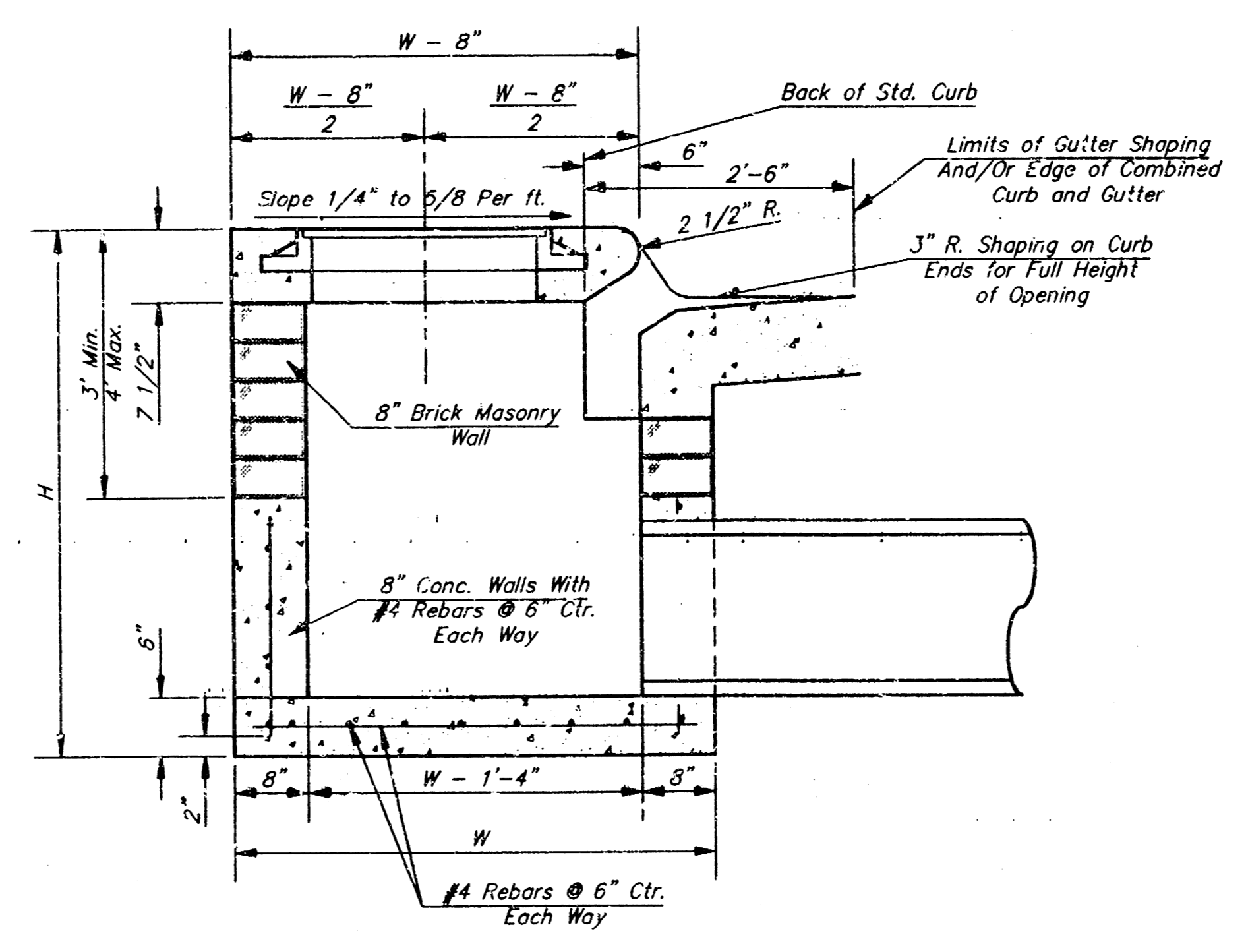
PROJECT NUMBER: 546 PPS
DESIGN: B.P. DRAWN: JWP APPROVED: DATE: Jun. 1995 SCALE: NOTED SHEET: 2 of 4



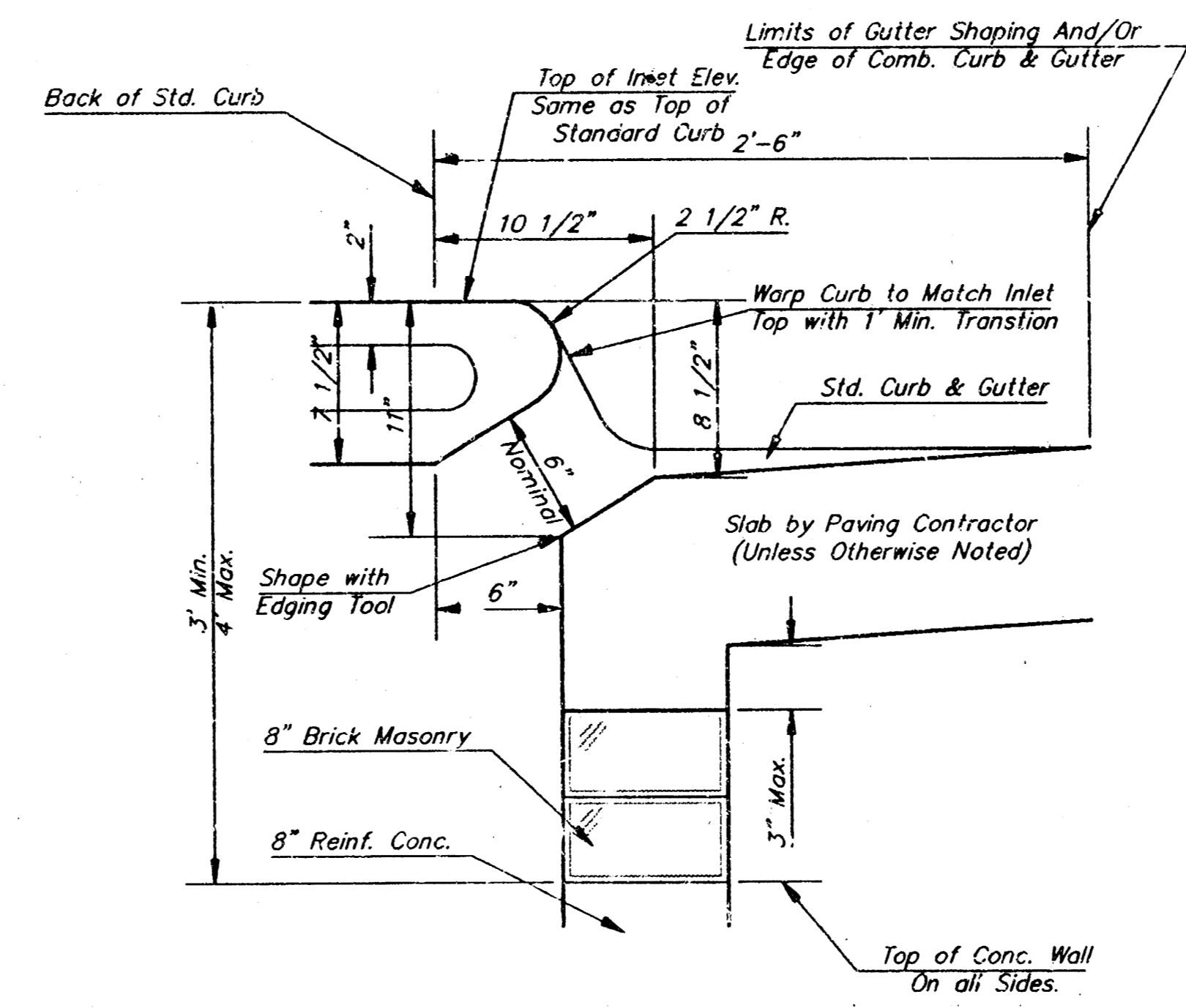
Notes:
 1. Inlet Top Reinforcing shall be Spaced on 6" Max. Centers. Inlet Lids shall be Notched out as Indicated to Facilitate Construction of Curb.
 2. b₃ Bar to be Field Bent to Clear Inlet Frame.



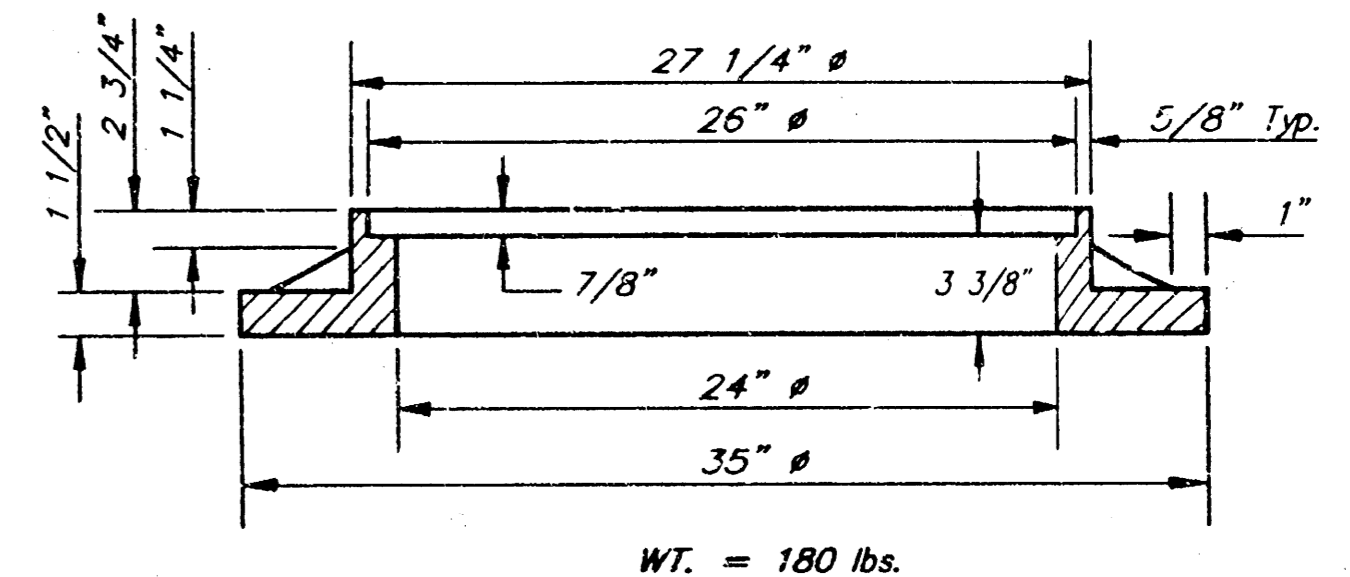
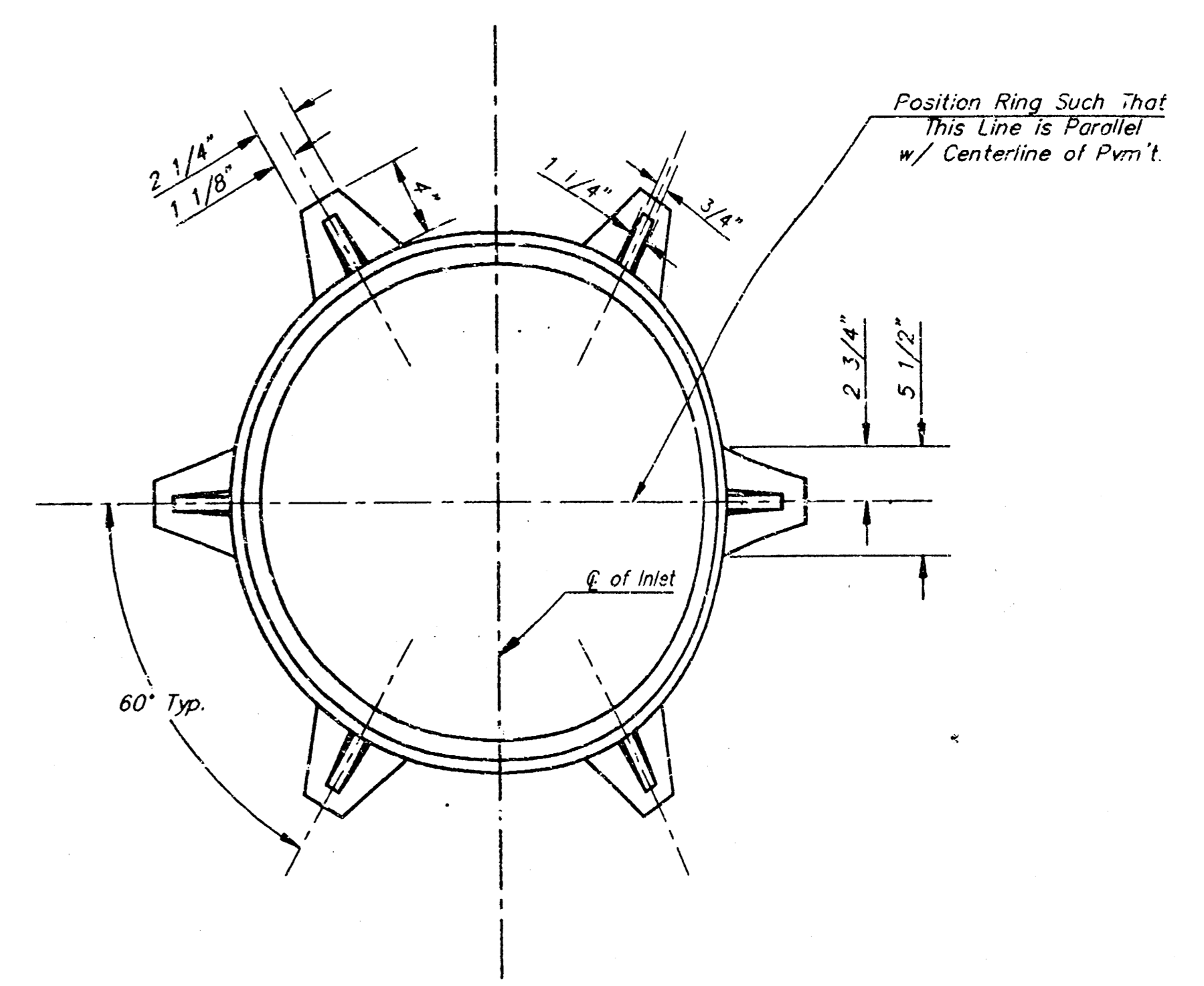
SECTION C-C



SECTION A-A

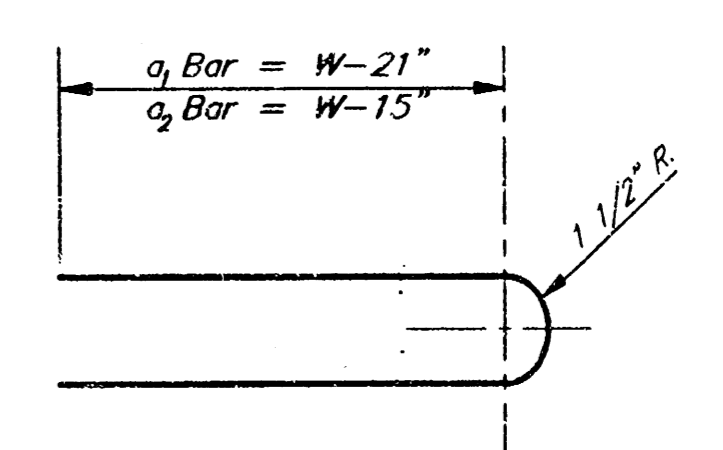


SECTION B-B



MANHOLE RING AND COVER

*See City of Wichita Standard Manhole Ring and Cover Detail Sheet for Cover Details to Be Used With Inlet Frame.



BENDING DIAGRAM

STEEL SCHEDULE

BAR	a ₁	a ₂	a ₃	b ₁	b ₂	b ₃	b ₄	b ₅	WL Lbs.			
NUMBER	4	4	2	1	3	5	7	9	6			
SIZE	#4	#4	#4	#4	#4	#4	#4	#4	#6			
LENGTH	W=4'-4"	5'-7"	6'-2"	4'-0"	6'-1"	-	-	-	1'-9"	6'-2"	4'-8"	60±
	W=5'-4"	7'-7"	8'-2"	5'-0"	6'-1"	-	-	-	1'-9"	6'-2"	4'-8"	81±
	W=6'-4"	9'-7"	10'-7"	6'-0"	-	6'-1"	-	-	1'-9"	6'-2"	4'-8"	101±
	W=7'-4"	11'-7"	12'-7"	7'-0"	-	-	6'-1"	-	1'-9"	6'-2"	4'-8"	121±
	W=8'-4"	13'-7"	14'-7"	8'-0"	-	-	-	6'-1"	1'-9"	6'-2"	4'-8"	141±

Note: a₃ Bars to be Placed Approx. 2" Below Top of Inlet Cover.

STANDARD CURB INLET PRECAST TOPS

W	PRE-CAST TOP SIZE	PIPE SIZE	CU. YD. CONC.
4'-4"	3'-8" 6'-4" 7 1/2"	21" & SMALLER	0.38±
5'-4"	4'-8" 6'-4" 7 1/2"	24" & 30"	0.51±
6'-4"	5'-8" 6'-4" 7 1/2"	36" & 42"	0.64±
7'-4"	6'-8" 6'-4" 7 1/2"	48" & 54"	0.77±
8'-4"	7'-8" 6'-4" 7 1/2"	60" & 66"	0.90±

GENERAL NOTES

- Concrete tops to be installed on thin mortar cushion to insure full support along brick walls. Concrete tops may be cast in place or precast. Concrete used for inlet construction shall be concrete pavement mix.
- Contractor shall have the option of constructing 8" brick masonry walls between the concrete inlet base and top on this inlet when W=6'-4" and H=7'-0" or less.
- Inlet invert shall be shaped with 8 sack sand mix concrete to create flow channels and to increase hydraulic efficiency such that the inlet will be self cleaning between all inlet and/or outlet pipes.
- The ends of all pipes installed in inlets shall be cut off flush with the inside face of the inlet wall.

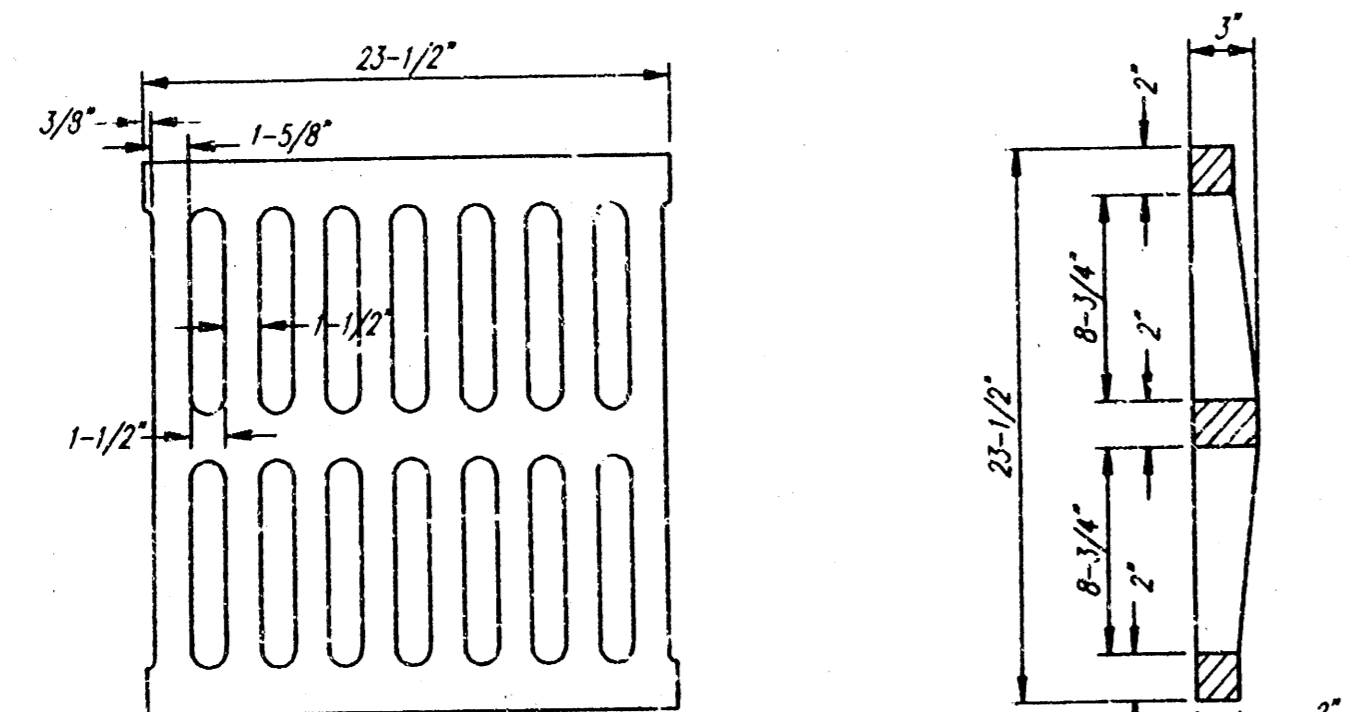
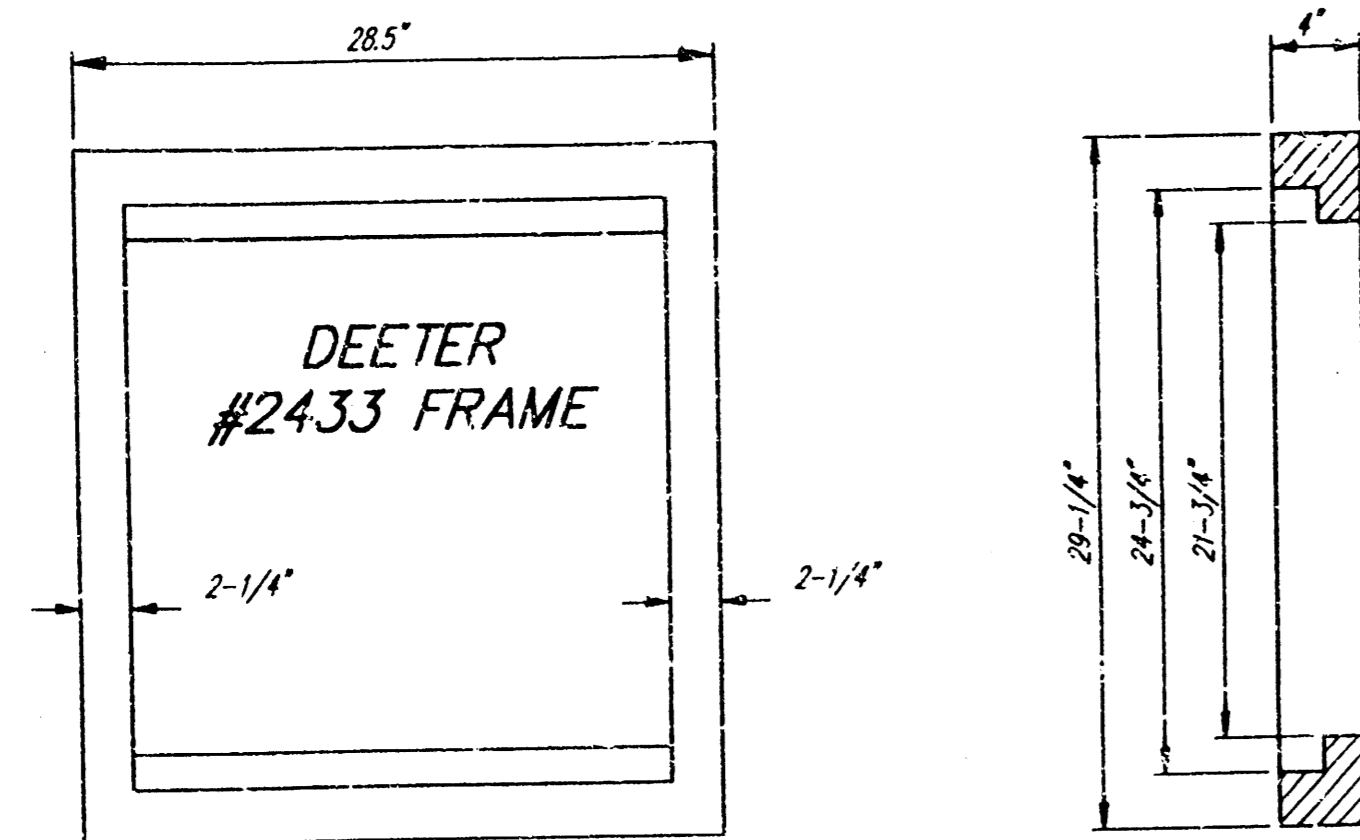
Revised - Dec. 21, 1986

**CITY OF WICHITA STANDARD TYPE 1
CURB INLET DETAILS
INLET OPENING = 6" x 10'-0"**

PROJECT NUMBER: 566 PPS Borders Books and Music

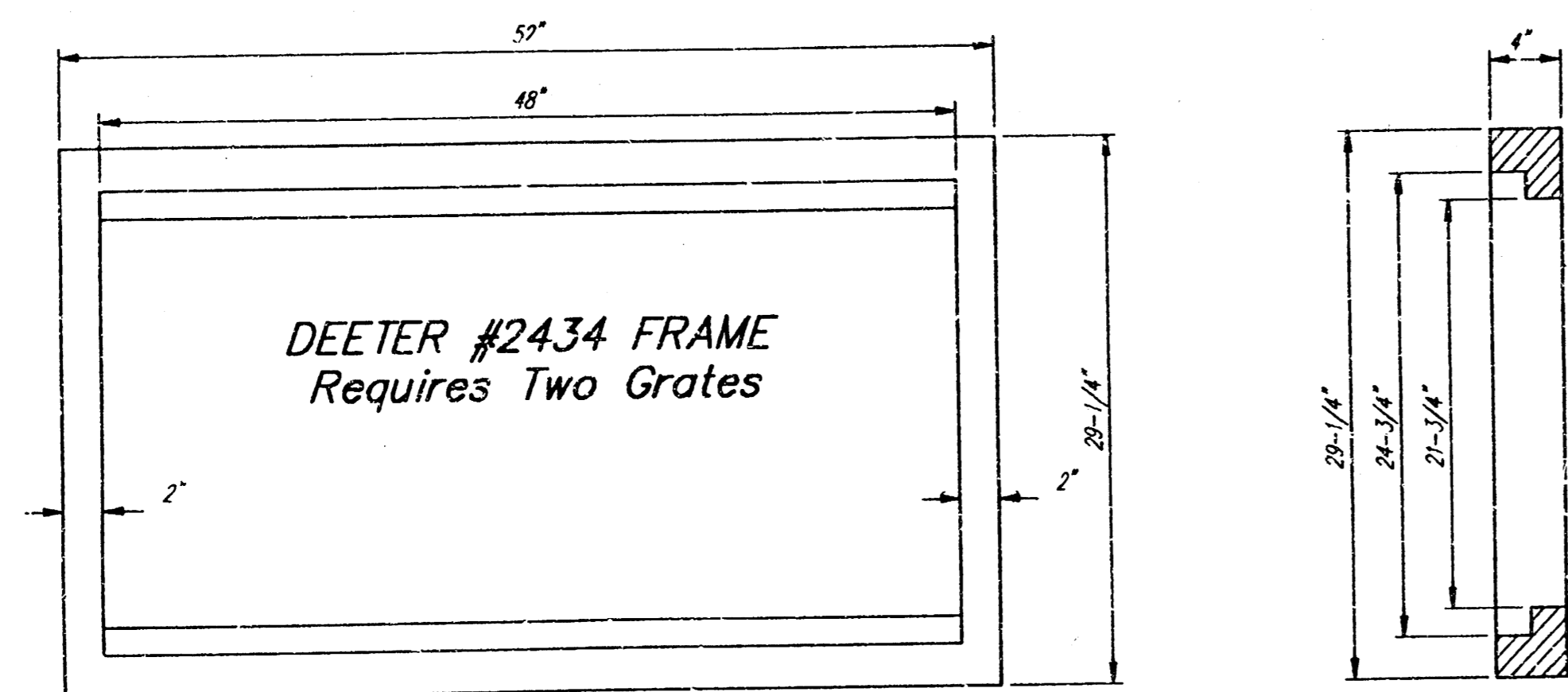
SHEET OF: 3 / 4

BAUGHMAN COMPANY P. A.
ENGINEERING & SURVEYING
318/362-7271 • 315 ELLIS • WICHITA, KANSAS 67211



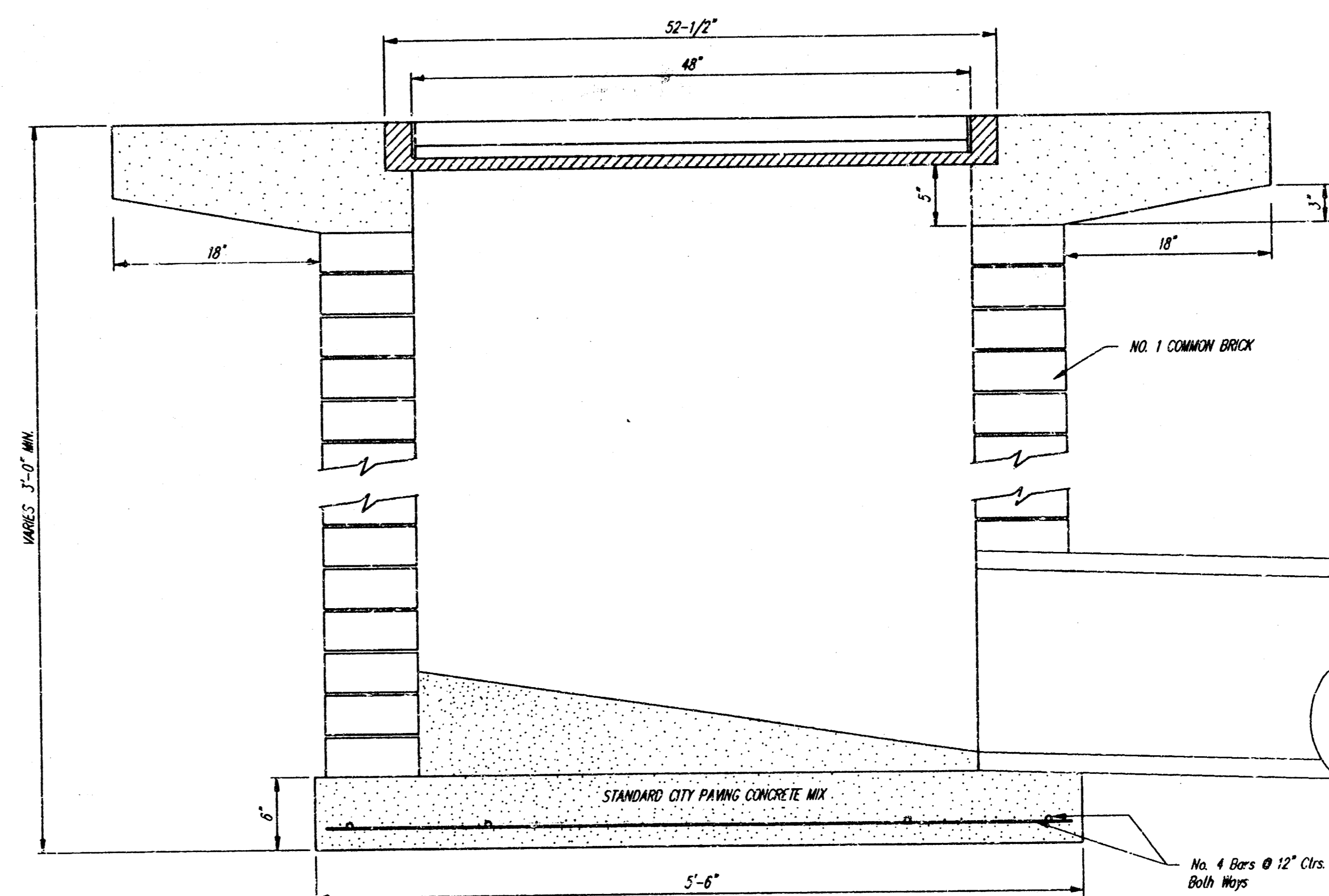
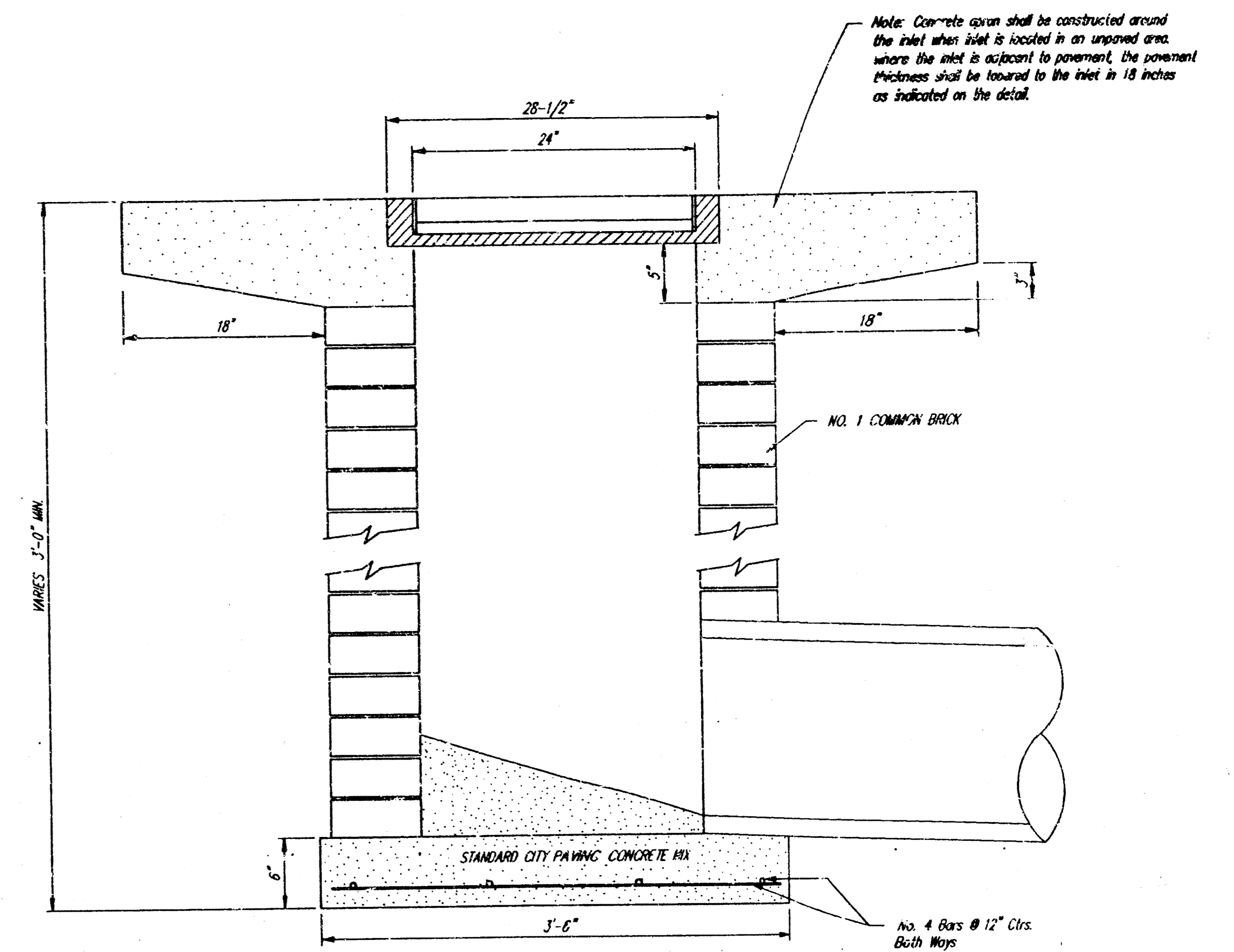
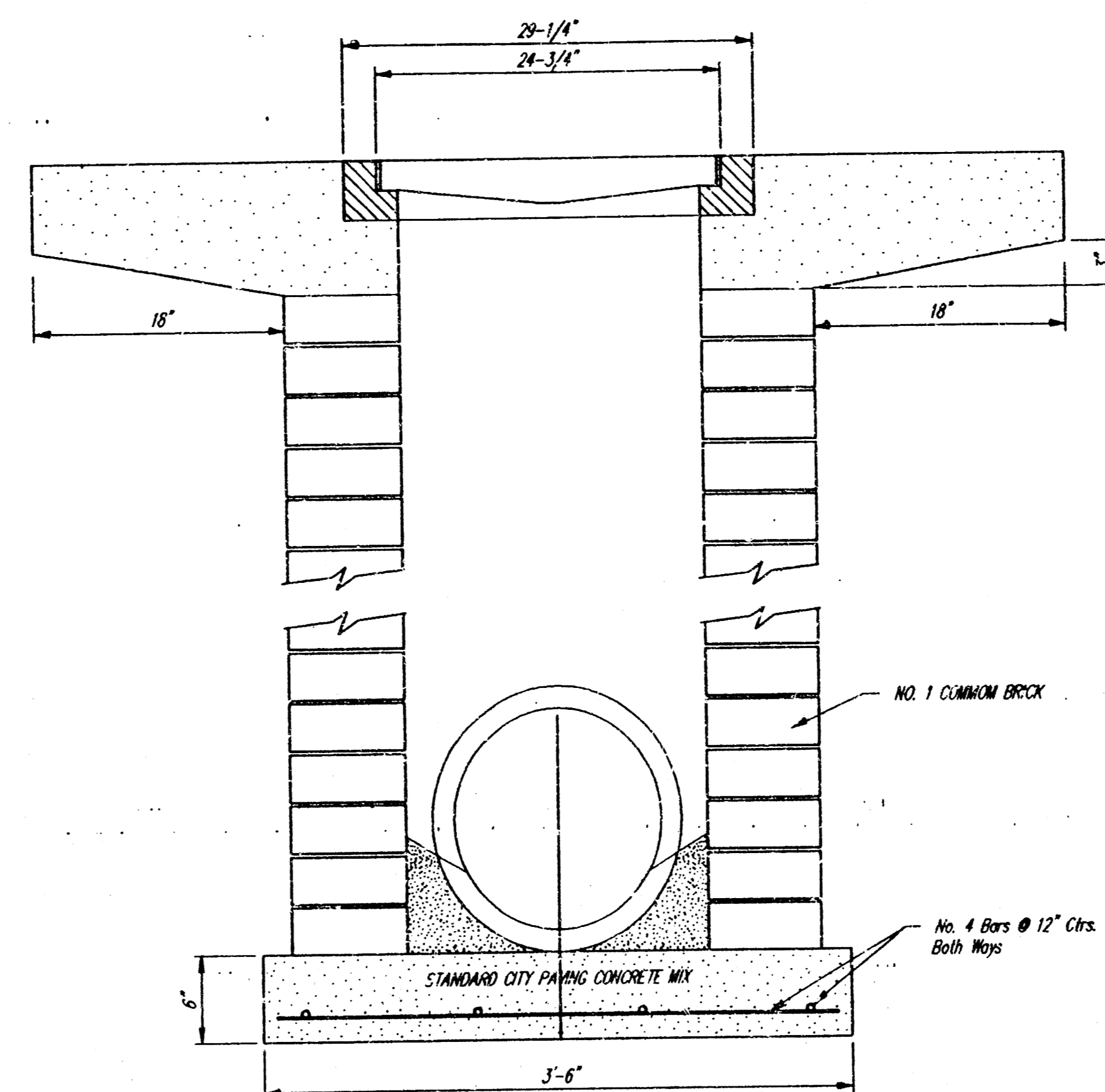
DEETER #2433 GRATE

24" x 24" Frame and Grate Detail



Double 24" x 24" Frame Detail

NOTE: Grates shall be imprinted on the top surface with "CITY OF WICHITA" using letters of least 1" in height. Other marking methods may be approved by the engineer.



City of Wichita Standard
Drop Inlet

BAUGHMAN COMPANY P.A.
ENGINEERING, SURVEYING, & PLANNING
316-262-7271 • 315 ELLIS • WICHITA, KANSAS 67211

PROJECT NUMBER: 566 PPS
Borders Books and Music

DESIGN	DRAWN	APPROVED	DATE	SCALE

SHEET 4