

- CONSTRUCTION NOTES:**
- 1. VARY CURB HEIGHT 0'-6" (20:1 MAX. SIDEWALK SLOPE)
 - 2. FLUSH CONDITION
 - 3. EXCAVATE EXISTING FILL SOILS AND REPLACE WITH ENGINEERED FILL (APPROXIMATE BUILDING FOOTPRINT PLUS 5'). PROVIDE LOW VOLUME CHANGE MATERIAL FOR THE UPPER 12" UNDER THE FLOOR SLAB WHERE NOTED THUS
 - 4. EXISTING DRAINAGE INLET TO REMAIN
 - 5. EXISTING STORM DRAIN TO REMAIN
 - 6. PLUG EXISTING STORM DRAIN TO BE ABANDONED WITH CONCRETE AT THESE LOCATIONS

NOTE TO CONTRACTOR:

INSPECTION AND TESTING FOR THIS PROJECT IS TO BE PROVIDED BY A LICENSED INSPECTING ENGINEERING FIRM UNDER CONTRACT WITH THE OWNER/DEVELOPER. SAID INSPECTION TO BE IN ACCORDANCE WITH THE CITY OF WICHITA STANDARD CONSTRUCTION ENGINEERING PRACTICES AND CERTIFIED BY A LICENSED PROFESSIONAL ENGINEER. NO WORK SHALL BE PERFORMED IN DEDICATED EASEMENTS OR THE PUBLIC RIGHT-OF-WAY BY THE CONTRACTOR WITHOUT SUCH INSPECTION NOR SHALL ANY WORK BE COMMENCED IN DEDICATED EASEMENTS OR PUBLIC RIGHT-OF-WAY WITHOUT WRITTEN AUTHORIZATION BY THE CITY ENGINEER.

APPROVED AS NOTED BY CITY ENGINEER OF WICHITA:

SANITARY SEWERS _____
 STORM SEWERS VRH 6/17/97
 DRIVEWAY APPROACHES _____
 WATER MAINS _____
 PAVING _____

SANITARY SEWER AND STORM WATER SEWER EXTENSION TO SERVE AMIDON PLAZA ADDITION. SAID INSPECTION TO BE IN ACCORDANCE WITH THE CITY OF WICHITA STANDARD CONSTRUCTION ENGINEERING PRACTICES AND CERTIFIED BY A LICENSED PROFESSIONAL ENGINEER. NO WORK SHALL BE PERFORMED IN DEDICATED EASEMENTS OR THE PUBLIC RIGHT-OF-WAY BY THE CONTRACTOR WITHOUT SUCH INSPECTION NOR SHALL ANY WORK BE COMMENCED IN DEDICATED EASEMENTS OR PUBLIC RIGHT-OF-WAY WITHOUT WRITTEN AUTHORIZATION BY THE CITY ENGINEER.

CITY ENGINEER: MICHAEL E. LINDBERK, P.E.

- GRADING AND STORM DRAIN NOTES:**
1. ADD 1300 TO ALL FINISHED GRADES AND CONTOURS.
 2. ALL EXISTING GROUND INFORMATION WAS OBTAINED BY A REGISTERED LAND SURVEYOR. NOTIFY ENGINEER IF EXISTING GROUND CONDITIONS ARE NOT REPRESENTATIVE IN THE FIELD.
 3. NEW CONTOURS DENOTE TOP OF FINISHED PAVING OR GRADED AREA AS INDICATED. ALL SPOT ELEVATIONS ARE TO TOP OF CURB OR FINISHED GRADE. UNLESS NOTED OTHERWISE, REFER TO ARCHITECTURAL - PARTIAL SITE PLAN 1.0 FOR FINISHED FLOOR AND SIDEWALK SPOT ELEVATIONS.
 4. ALL UTILITY LOCATIONS SHOWN ARE APPROXIMATE. IT IS THE CONTRACTOR'S RESPONSIBILITY TO LOCATE AND TO FIELD VERIFY EXISTING UTILITIES.
 5. ALL STORM DRAIN PIPE TO BE RCP CLASS V, 3000-D, UNO.
 6. ALL STORM DRAIN PIPE LENGTHS ARE CALCULATED TO THE INSIDE FACE OF DRAINAGE STRUCTURES AND ROUNDED UP TO THE NEAREST FOOT.
 7. ALL "STANDARD" REFERENCES REFER TO STATE OF KANSAS DEPARTMENT OF TRANSPORTATION DESIGN STANDARDS.
 8. ALL "BROOKS" PRECAST CONCRETE DRAINAGE STRUCTURE ARE TO BE EQUIPPED WITH TRAFFIC GRATES AND MAY BE REPLACED BY APPROVED EQUIVALENT PRODUCTS.
 9. ADJUST ALL MANHOLE RIMS AND VALVE BOXES TO FINISHED GRADE.
 10. ALL CURBS ARE 6" HIGH, UNLESS NOTED OTHERWISE.

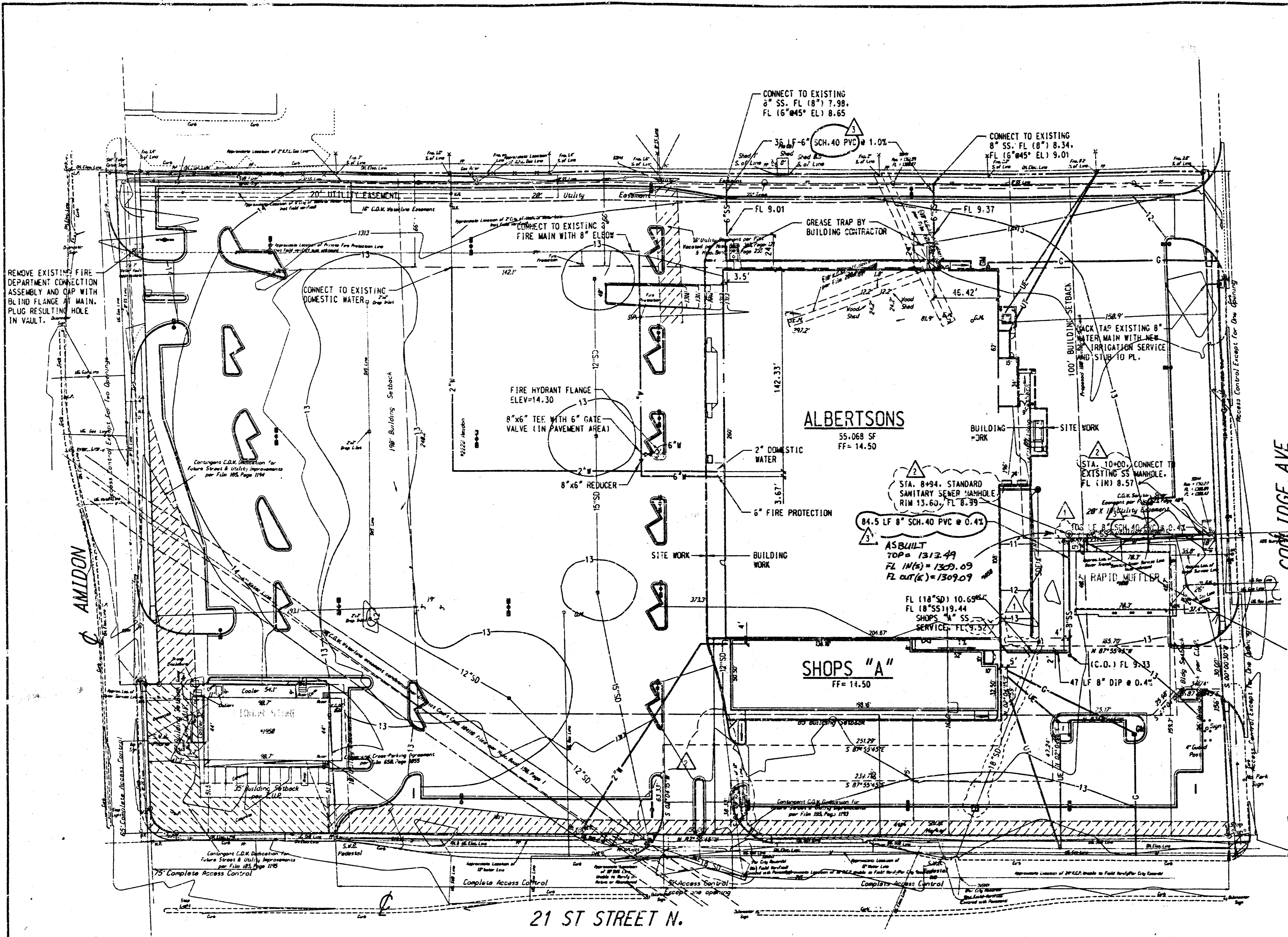
GRADING AND STORM DRAIN LEGEND:

NEW	DESCRIPTION	EXISTING
---	PROPERTY LINE	---
---	EASEMENT LINE	---
15	FINISHED CONTOURS	1313
13.13	FINISHED SPOT ELEVATION (SPOT ELEVATION)	
TC 13.13	(TC = TOP OF CURB)	
G 13.13	(G = GUTTER)	
{13.13}	(FUTURE SPOT ELEVATION)	
10'50	STORM DRAIN LINE	
○	STORM DRAIN JUNCTION BOX WITH MANHOLE	
C.O.	CLEANOUT TO GRADE	
□	CURB INLET	□
▭	FLARED END SECTION	▭
0.8%	FLOW ARROW	
---	RIDGE LINE	
FILL CUT	DAYLIGHT LINE	
---	DRAINAGE AREA LINE	
DI	GRADED DROP INLET	
---	DITCH OR SWALE	

PROJECT BENCHMARK:

CITY OF WICHITA DISC ON S.E. CORNER OF THE LITTLE ARKANSAS RIVER BRIDGE LOCATED ON 21ST STREET NORTH. ELEV. = 1313.71 MSL

NO.	DATE	DESCRIPTION
1	05/18/97	ISSUED FOR BID AND PERMIT
2	07/22/97	ISSUED FOR REVIEW
3	08/14/97	ISSUED FOR REVIEW
4	09/17/97	ISSUED FOR REVIEW
5	10/14/97	ISSUED FOR REVIEW
6	11/11/97	ISSUED FOR REVIEW
7	12/08/97	ISSUED FOR REVIEW
8	01/05/98	ISSUED FOR REVIEW
9	02/02/98	ISSUED FOR REVIEW
10	03/01/98	ISSUED FOR REVIEW
11	04/01/98	ISSUED FOR REVIEW
12	05/01/98	ISSUED FOR REVIEW
13	06/01/98	ISSUED FOR REVIEW
14	07/01/98	ISSUED FOR REVIEW
15	08/01/98	ISSUED FOR REVIEW
16	09/01/98	ISSUED FOR REVIEW
17	10/01/98	ISSUED FOR REVIEW
18	11/01/98	ISSUED FOR REVIEW
19	12/01/98	ISSUED FOR REVIEW
20	01/01/99	ISSUED FOR REVIEW
21	02/01/99	ISSUED FOR REVIEW
22	03/01/99	ISSUED FOR REVIEW
23	04/01/99	ISSUED FOR REVIEW
24	05/01/99	ISSUED FOR REVIEW
25	06/01/99	ISSUED FOR REVIEW
26	07/01/99	ISSUED FOR REVIEW
27	08/01/99	ISSUED FOR REVIEW
28	09/01/99	ISSUED FOR REVIEW
29	10/01/99	ISSUED FOR REVIEW
30	11/01/99	ISSUED FOR REVIEW
31	12/01/99	ISSUED FOR REVIEW
32	01/01/00	ISSUED FOR REVIEW
33	02/01/00	ISSUED FOR REVIEW
34	03/01/00	ISSUED FOR REVIEW
35	04/01/00	ISSUED FOR REVIEW
36	05/01/00	ISSUED FOR REVIEW
37	06/01/00	ISSUED FOR REVIEW
38	07/01/00	ISSUED FOR REVIEW
39	08/01/00	ISSUED FOR REVIEW
40	09/01/00	ISSUED FOR REVIEW
41	10/01/00	ISSUED FOR REVIEW
42	11/01/00	ISSUED FOR REVIEW
43	12/01/00	ISSUED FOR REVIEW
44	01/01/01	ISSUED FOR REVIEW
45	02/01/01	ISSUED FOR REVIEW
46	03/01/01	ISSUED FOR REVIEW
47	04/01/01	ISSUED FOR REVIEW
48	05/01/01	ISSUED FOR REVIEW
49	06/01/01	ISSUED FOR REVIEW
50	07/01/01	ISSUED FOR REVIEW
51	08/01/01	ISSUED FOR REVIEW
52	09/01/01	ISSUED FOR REVIEW
53	10/01/01	ISSUED FOR REVIEW
54	11/01/01	ISSUED FOR REVIEW
55	12/01/01	ISSUED FOR REVIEW
56	01/01/02	ISSUED FOR REVIEW
57	02/01/02	ISSUED FOR REVIEW
58	03/01/02	ISSUED FOR REVIEW
59	04/01/02	ISSUED FOR REVIEW
60	05/01/02	ISSUED FOR REVIEW
61	06/01/02	ISSUED FOR REVIEW
62	07/01/02	ISSUED FOR REVIEW
63	08/01/02	ISSUED FOR REVIEW
64	09/01/02	ISSUED FOR REVIEW
65	10/01/02	ISSUED FOR REVIEW
66	11/01/02	ISSUED FOR REVIEW
67	12/01/02	ISSUED FOR REVIEW
68	01/01/03	ISSUED FOR REVIEW
69	02/01/03	ISSUED FOR REVIEW
70	03/01/03	ISSUED FOR REVIEW
71	04/01/03	ISSUED FOR REVIEW
72	05/01/03	ISSUED FOR REVIEW
73	06/01/03	ISSUED FOR REVIEW
74	07/01/03	ISSUED FOR REVIEW
75	08/01/03	ISSUED FOR REVIEW
76	09/01/03	ISSUED FOR REVIEW
77	10/01/03	ISSUED FOR REVIEW
78	11/01/03	ISSUED FOR REVIEW
79	12/01/03	ISSUED FOR REVIEW
80	01/01/04	ISSUED FOR REVIEW
81	02/01/04	ISSUED FOR REVIEW
82	03/01/04	ISSUED FOR REVIEW
83	04/01/04	ISSUED FOR REVIEW
84	05/01/04	ISSUED FOR REVIEW
85	06/01/04	ISSUED FOR REVIEW
86	07/01/04	ISSUED FOR REVIEW
87	08/01/04	ISSUED FOR REVIEW
88	09/01/04	ISSUED FOR REVIEW
89	10/01/04	ISSUED FOR REVIEW
90	11/01/04	ISSUED FOR REVIEW
91	12/01/04	ISSUED FOR REVIEW
92	01/01/05	ISSUED FOR REVIEW
93	02/01/05	ISSUED FOR REVIEW
94	03/01/05	ISSUED FOR REVIEW
95	04/01/05	ISSUED FOR REVIEW
96	05/01/05	ISSUED FOR REVIEW
97	06/01/05	ISSUED FOR REVIEW
98	07/01/05	ISSUED FOR REVIEW
99	08/01/05	ISSUED FOR REVIEW
100	09/01/05	ISSUED FOR REVIEW
101	10/01/05	ISSUED FOR REVIEW
102	11/01/05	ISSUED FOR REVIEW
103	12/01/05	ISSUED FOR REVIEW
104	01/01/06	ISSUED FOR REVIEW
105	02/01/06	ISSUED FOR REVIEW
106	03/01/06	ISSUED FOR REVIEW
107	04/01/06	ISSUED FOR REVIEW
108	05/01/06	ISSUED FOR REVIEW
109	06/01/06	ISSUED FOR REVIEW
110	07/01/06	ISSUED FOR REVIEW
111	08/01/06	ISSUED FOR REVIEW
112	09/01/06	ISSUED FOR REVIEW
113	10/01/06	ISSUED FOR REVIEW
114	11/01/06	ISSUED FOR REVIEW
115	12/01/06	ISSUED FOR REVIEW
116	01/01/07	ISSUED FOR REVIEW
117	02/01/07	ISSUED FOR REVIEW
118	03/01/07	ISSUED FOR REVIEW
119	04/01/07	ISSUED FOR REVIEW
120	05/01/07	ISSUED FOR REVIEW
121	06/01/07	ISSUED FOR REVIEW
122	07/01/07	ISSUED FOR REVIEW
123	08/01/07	ISSUED FOR REVIEW
124	09/01/07	ISSUED FOR REVIEW
125	10/01/07	ISSUED FOR REVIEW
126	11/01/07	ISSUED FOR REVIEW
127	12/01/07	ISSUED FOR REVIEW
128	01/01/08	ISSUED FOR REVIEW
129	02/01/08	ISSUED FOR REVIEW
130	03/01/08	ISSUED FOR REVIEW
131	04/01/08	ISSUED FOR REVIEW
132	05/01/08	ISSUED FOR REVIEW
133	06/01/08	ISSUED FOR REVIEW
134	07/01/08	ISSUED FOR REVIEW
135	08/01/08	ISSUED FOR REVIEW
136	09/01/08	ISSUED FOR REVIEW
137	10/01/08	ISSUED FOR REVIEW
138	11/01/08	ISSUED FOR REVIEW
139	12/01/08	ISSUED FOR REVIEW
140	01/01/09	ISSUED FOR REVIEW
141	02/01/09	ISSUED FOR REVIEW
142	03/01/09	ISSUED FOR REVIEW
143	04/01/09	ISSUED FOR REVIEW
144	05/01/09	ISSUED FOR REVIEW
145	06/01/09	ISSUED FOR REVIEW
146	07/01/09	ISSUED FOR REVIEW
147	08/01/09	ISSUED FOR REVIEW
148	09/01/09	ISSUED FOR REVIEW
149	10/01/09	ISSUED FOR REVIEW
150	11/01/09	ISSUED FOR REVIEW
151	12/01/09	ISSUED FOR REVIEW
152	01/01/10	ISSUED FOR REVIEW
153	02/01/10	ISSUED FOR REVIEW
154	03/01/10	ISSUED FOR REVIEW
155	04/01/10	ISSUED FOR REVIEW
156	05/01/10	ISSUED FOR REVIEW
157	06/01/10	ISSUED FOR REVIEW
158	07/01/10	ISSUED FOR REVIEW
159	08/01/10	ISSUED FOR REVIEW
160	09/01/10	ISSUED FOR REVIEW
161	10/01/10	ISSUED FOR REVIEW
162	11/01/10	ISSUED FOR REVIEW
163	12/01/10	ISSUED FOR REVIEW
164	01/01/11	ISSUED FOR REVIEW
165	02/01/11	ISSUED FOR REVIEW
166	03/01/11	ISSUED FOR REVIEW
167	04/01/11	ISSUED FOR REVIEW
168	05/01/11	ISSUED FOR REVIEW
169	06/01/11	ISSUED FOR REVIEW
170	07/01/11	ISSUED FOR REVIEW
171	08/01/11	ISSUED FOR REVIEW
172	09/01/11	ISSUED FOR REVIEW
173	10/01/11	ISSUED FOR REVIEW
174	11/01/11	ISSUED FOR REVIEW
175	12/01/11	ISSUED FOR REVIEW
176	01/01/12	ISSUED FOR REVIEW
177	02/01/12	ISSUED FOR REVIEW
178	03/01/12	ISSUED FOR REVIEW
179	04/01/12	ISSUED FOR REVIEW
180	05/01/12	ISSUED FOR REVIEW
181	06/01/12	ISSUED FOR REVIEW
182	07/01/12	ISSUED FOR REVIEW
183	08/01/12	ISSUED FOR REVIEW
184	09/01/12	ISSUED FOR REVIEW
185	10/01/12	ISSUED FOR REVIEW
186	11/01/12	ISSUED FOR REVIEW
187	12/01/12	ISSUED FOR REVIEW
188	01/01/13	ISSUED FOR REVIEW
189	02/01/13	ISSUED FOR REVIEW
190	03/01/13	ISSUED FOR REVIEW
191	04/01/13	ISSUED FOR REVIEW
192	05/01/13	ISSUED FOR REVIEW
193	06/01/13	ISSUED FOR REVIEW
194	07/01/13	ISSUED FOR REVIEW
195	08/01/13	ISSUED FOR REVIEW
196	09/01/13	ISSUED FOR REVIEW
197	10/01/13	ISSUED FOR REVIEW
198	11/01/13	ISSUED FOR REVIEW
199	12/01/13	ISSUED FOR REVIEW
200	01/01/14	ISSUED FOR REVIEW
201	02/01/14	ISSUED FOR REVIEW
202	03/01/14	ISSUED FOR REVIEW
203	04/01/14	ISSUED FOR REVIEW
204	05/01/14	ISSUED FOR REVIEW
205	06/01/14	ISSUED FOR REVIEW
206	07/01/14	ISSUED FOR REVIEW
207	08/01/14	ISSUED FOR REVIEW
208	09/01/14	ISSUED FOR REVIEW
209	10/01/14	ISSUED FOR REVIEW
210	11/01/14	ISSUED FOR REVIEW
211	12/01/14	ISSUED FOR REVIEW
212	01/01/15	ISSUED FOR REVIEW
213	02/01/15	ISSUED FOR REVIEW
214	03/01/15	ISSUED FOR REVIEW
215	04/01/15	ISSUED FOR REVIEW
216	05/01/15	ISSUED FOR REVIEW
217	06/01/15	ISSUED FOR REVIEW
218	07/01/15	ISSUED FOR REVIEW
219	08/01/15	ISSUED FOR REVIEW
220	09/01/15	ISSUED FOR REVIEW
221	10/01/15	ISSUED FOR REVIEW
222	11/01/15	ISSUED FOR REVIEW
223	12/01/15	ISSUED FOR REVIEW
224	01/01/16	ISSUED FOR REVIEW
225	02/01/16	ISSUED FOR REVIEW
226	03/01/16	ISSUED FOR REVIEW
227	04/01/16	ISSUED FOR REVIEW
228	05/01/16	ISSUED FOR REVIEW
229	06/01/16	ISSUED FOR REVIEW
230	07/01/16	ISSUED FOR REVIEW
231	08/01/16	ISSUED FOR REVIEW
232	09/01/16	ISSUED FOR REVIEW
233	10/01/16	ISSUED FOR REVIEW
234	11/01/16	ISSUED FOR REVIEW
235	12/01/16	ISSUED FOR REVIEW
236	01/01/17	ISSUED FOR REVIEW
237	02/01/17	ISSUED FOR REVIEW
238	03/01/17	ISSUED FOR REVIEW
239	04/01/17	ISSUED FOR REVIEW
240	05/01/17	ISSUED FOR REVIEW
241	06/01/17	ISSUED FOR REVIEW
242	07/01/17	ISSUED FOR REVIEW
243	08/01/17	ISSUED FOR REVIEW
244	09/01/17	ISSUED FOR REVIEW
245	10/01/17	ISSUED FOR REVIEW
246	11/01/17	ISSUED FOR REVIEW
247	12/01/17	ISSUED FOR REVIEW
248	01/01/18	ISSUED FOR REVIEW
249	02/01/18	ISSUED FOR REVIEW
250	03/01/18	ISSUED FOR REVIEW
251	04/01/18	ISSUED FOR REVIEW
252	05/01/18	ISSUED FOR REVIEW
253	06/01/18	ISSUED FOR REVIEW
254	07/01/18	ISSUED FOR REVIEW
255	08/01/18	ISSUED FOR REVIEW
256	09/01/18	ISSUED FOR REVIEW
257	10/01/18	ISSUED FOR REVIEW
258	11/01/18	ISSUED FOR REVIEW
259	12/01/18	ISSUED FOR REVIEW
260	01/01/19	ISSUED FOR REVIEW
261	02/01/19	



- UTILITY NOTES:**
- THE PURPOSE OF THIS PLAN IS TO PROVIDE WATER AND SEWER DESIGN, AS WELL AS TO SHOW ALL UTILITIES (WET & DRY) ON ONE PLAN FOR COORDINATION PURPOSES AND TO DEFINE THE LIMITS OF CONSTRUCTION RESPONSIBILITY. REFER TO THE IRRIGATION PLAN FOR DIAGRAMMATIC WATER LINES AND SLEEVING NOT SHOWN ON THIS DRAWING.
 - ALL CONDUITS AND SLEEVES TO BE SCHEDULE 40 PVC, UNO.
 - CONTRACTOR SHALL COORDINATE ALL UTILITY CONNECTION POINTS WITH BUILDING CONTRACTOR.
 - ADD 1300 TO ALL CONTOUR AND SPOT ELEVATIONS
 - THE CONSTRUCTION OF THE GREASE TRAP AND WASTE LINE TO TIE INTO THE SERVICE LINE ARE PART OF THE BUILDING CONTRACT.
 - MINIMUM DEPTHS OF COVER:
 - WATER LINES - 3.0'
 - PVC SS - 3.0'
 - DIP SS - 0.5'
 - TELEPHONE - 2.0'
 - GAS - 2.0'
 - ELECTRIC - 3.5'
 - ALL NEW AND EXISTING MANHOLE RIMS, CLEANOUTS, VALVE AND METER BOXES IN AFFECTED AREAS SHALL BE ADJUSTED TO FINISHED GRADE.
 - THE CONTRACTOR SHALL FURNISH ALL NECESSARY BONDS, PAY PERMIT AND INSPECTION FEES AND OBTAIN ALL PERMITS.
 - RESTORE ALL DISTURBED AREAS IN THE PUBLIC RIGHT-OF-WAY IN KIND; SOG SHALL BE USED FOR TURF AREAS.
- WATER NOTES:**
- FIRE DEPARTMENT REQUIREMENTS (NOTE: THE FOLLOWING ARE MINIMUM REQUIREMENTS. PROJECT REQUIREMENTS MAY EXCEED THOSE NOTED BELOW)
- ALL UNDERGROUND, STANDPIPE AND SPRINKLER PIPING TO BE TESTED TO 200 PSI FOR 2 HOURS.
 - NOTIFY THE FIRE DEPARTMENT OF THE 200# TEST AT LEAST 24 HOURS PRIOR TO THE TEST.
 - ANY DEFICIENCY NOTED DURING ANY REQUIRED INSPECTIONS SHALL BE CORRECTED BEFORE THE PROJECT IS SLOWED OFF, REGARDLESS IF IT WAS NOTED ON THE PLANS REVIEW OR NOT.
 - ALL UNDERGROUND FIRE PROTECTION MAINS SHALL COMPLY WITH THE CITY OF WICHITA STANDARD NUMBER 14533 FOR THE INSTALLATION OF WATER DISTRIBUTION SYSTEMS. CONTACT ROB YOUNG, IN CHARGE, 266-4450.
 - ALL WORK, ABOVE AND BELOW GROUND, SHALL BE PERFORMED BY A CITY OF WICHITA LICENSED CONTRACTOR. ALL REQUIRED PERMITS AND BONDS SHALL BE PROVIDED BY THE INSTALLATION CONTRACTOR. ALL PIPING, ABOVE GROUND AND BELOW GROUND SHALL BE INSPECTED BEFORE COVERING.
 - HYDRANTS SHALL COMPLY WITH CITY OF WICHITA SPECIFICATION FOR FIRE HYDRANTS.

COMPOSITE UTILITY LEGEND:

NEW	DESCRIPTION	EXISTING
---	PROPERTY LINE	
---	24" SD	
⊙	STORM DRAIN JUNCTION BOX WITH MANHOLE	
—	CURB INLET	
—	HEADWALL	
—	8" SS	
—	SANITARY SEWER LINE (DIRECTION OF FLOW INDICATED)	
⊙	SANITARY SEWER MANHOLE	
—	C.O.	
—	CLEANOUT	
—	STUB-OUT CONNECTION	
—	GREASE INTERCEPTOR	
—	6" W	
—	WATER LINE	
—	GATE VALVE	
—	FIRE HYDRANT	
—	WATER METER	
—	LIGHT POLE	
—	G	
—	GAS LINE	
—	GAS METER	
—	OHE	
—	OVERHEAD ELECTRICAL LINE	
—	UNDERGROUND ELECTRICAL DUCTBANK	
—	TRANSFORMER	
—	UNDERGROUND TELEPHONE CONDUIT ONLY	
—	OHT	
—	OVERHEAD TELEPHONE	
—	ELECTRICAL PULL BOX	
—	(12-34)	
—	FUTURE ELEVATION	

1 UTILITY PLAN
C401 SCALE: 1" = 40'

NOTE TO CONTRACTOR:

INSPECTION AND TESTING FOR THIS PROJECT IS TO BE PROVIDED BY A LICENSED CONSULTING ENGINEERING FIRM UNDER CONTRACT WITH THE OWNER/CLIENT. SAID INSPECTION TO BE IN ACCORDANCE WITH THE CITY OF WICHITA STANDARD CONSTRUCTION ENGINEERING PRACTICES AND CERTIFIED BY A LICENSED PROFESSIONAL ENGINEER. NO WORK SHALL BE PERFORMED IN DEDICATED EASEMENTS OR THE PUBLIC RIGHT-OF-WAY BY THE CONTRACTOR WITHOUT SUCH INSPECTION NOR SHALL ANY WORK BE COMMENCED IN DEDICATED EASEMENTS OR PUBLIC RIGHT-OF-WAY WITHOUT WRITTEN AUTHORIZATION BY THE CITY ENGINEER.

APPROVED AS NOTED BY CITY ENGINEER OF WICHITA:

SANITARY SEWERS: VRH 6/1/97

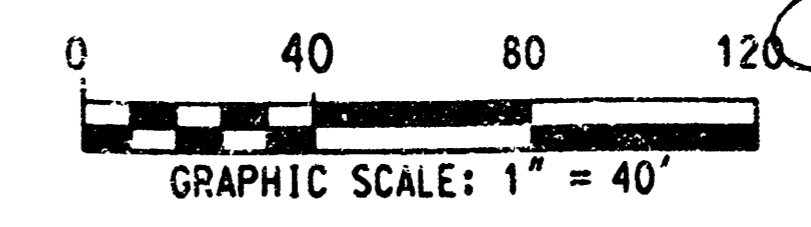
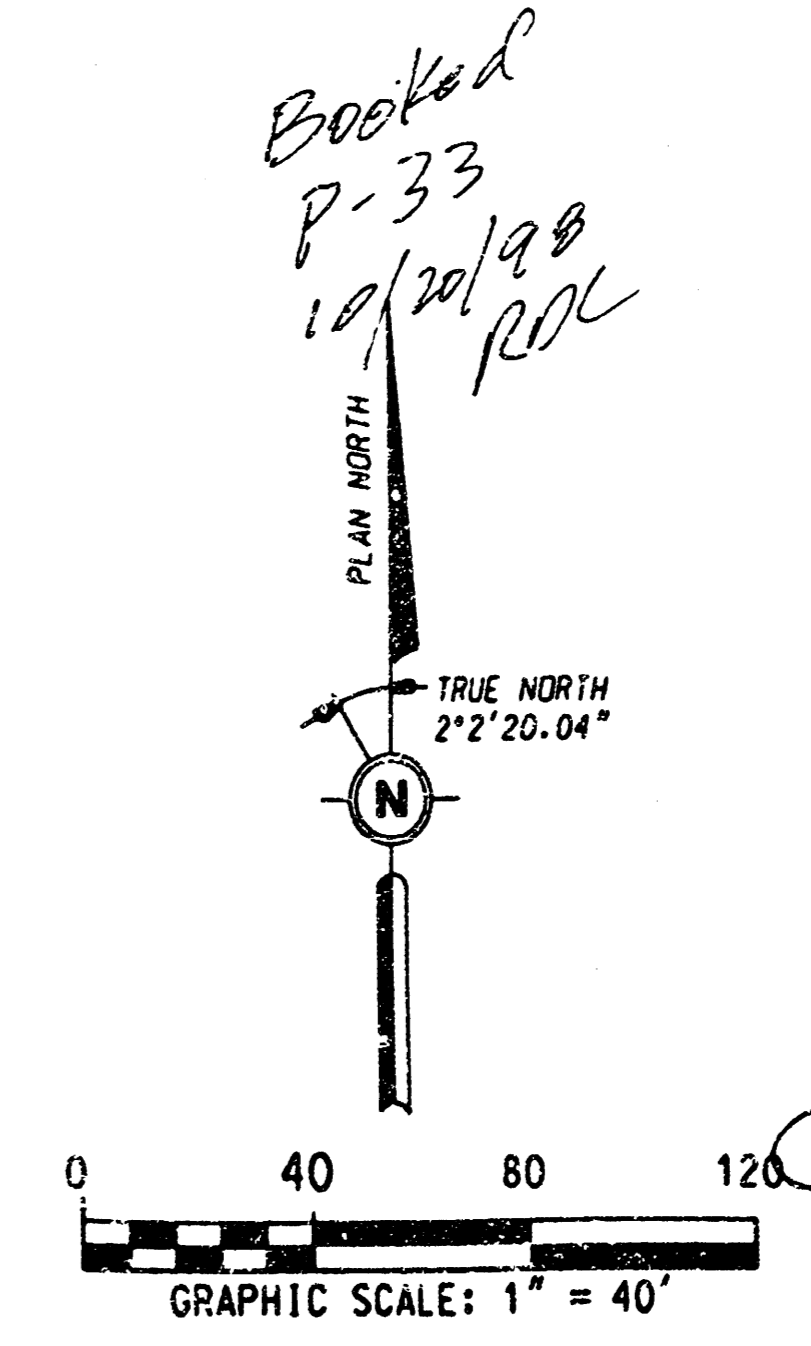
STORM SEWERS: _____

DRIVENWAY APPROACHES: _____

WATER MAINS: _____

PAVING: _____

SANITARY SEWER AND STORM WATER SEWER EXTENSION TO SERVE AMIDON PLAZA ADDITION.
CITY OF WICHITA PRIVATE PROJECT NO: 706PPS(607861)
CITY ENGINEER: MICHAEL E. LINDBERK, P.E.



PROJECT BENCHMARK:
CITY OF WICHITA DISC ON S.E. CORNER OF THE LITTLE ARKANSAS RIVER BRIDGE LOCATED ON 21ST STREET NORTH. ELEV. = 1313.71 MSL

NO.	DATE	DESCRIPTION
		REVISIONS

**AMIDON PLAZA ADDITION
WICHITA, KANSAS**

UTILITY PLAN
ASBUILT 6/12/97

ASBUILT & INSPECTION BY BAUGHMAN CO. PROJ. # 708 PPS (607861)



JOB NUMBER 21000019	PROTOTYPE SHEET
DESIGNED BY HW	STORM NUMBER 2250
DRAWN BY HW	
APPROVED BY HW	
DATE 2/14/97	
SHEET NUMBER	C401

BOOKED

*Booked
P-33
10/20/98
ROL*