

# STORM WATER SEWER EXTENSION TO SERVE HEDGEWOOD 2ND ADDITION

BLOCK B, LOTS 16 - 19

PRIVATE PROJECT NUMBER:

808 PPS (607861)

CITY OF WICHITA, KANSAS

Michael E. Lindebak, P.E. City Engineer

June, 1998

TO DOOR  
808 PPS  
Box D-218  
SWS RKS IN

## GENERAL NOTES:

1. Contractor will be required to provide notice to utility companies a minimum of twenty-four (24) hours prior to any excavation, as follows:

Kansas One-Call 687-2470

The Contractor must notify the following in case of an emergency:

Cablevision 262-4270  
K.G.E. Gas Service Company 263-2061  
Kansas Gas & Electric Company 383-8650  
Peoples Natural Gas Company 942-7600  
Southwestern Bell Telephone Company 1-571-2611  
City of Wichita Water Department 268-4908  
City of Wichita Sewer Maintenance 268-4071

2. Underground utility service lines and overhead utility pole lines are to be adjusted as necessary by others prior to construction unless the plans specifically call for their adjustment by the Contractor or unless the plans specifically identify a utility to be adjusted by its owner during construction. Existing utilities and their location, as shown on the plans, represent the best information obtainable for design. Location information has been obtained from the various utility companies and is either from company record drawings or company provided field locations. The Contractor will be required to work around existing utilities within the right-of-way which do not conflict with proposed construction.

3. Properties within the project limits may have underground sprinkler systems in public right-of-way which conflict with new construction. Contractor will be required to remove such improvements should they not be removed by their owner at the time of construction of the project. Portions of underground sprinkler systems not in conflict with new construction shall be protected from damage and shall remain in place.

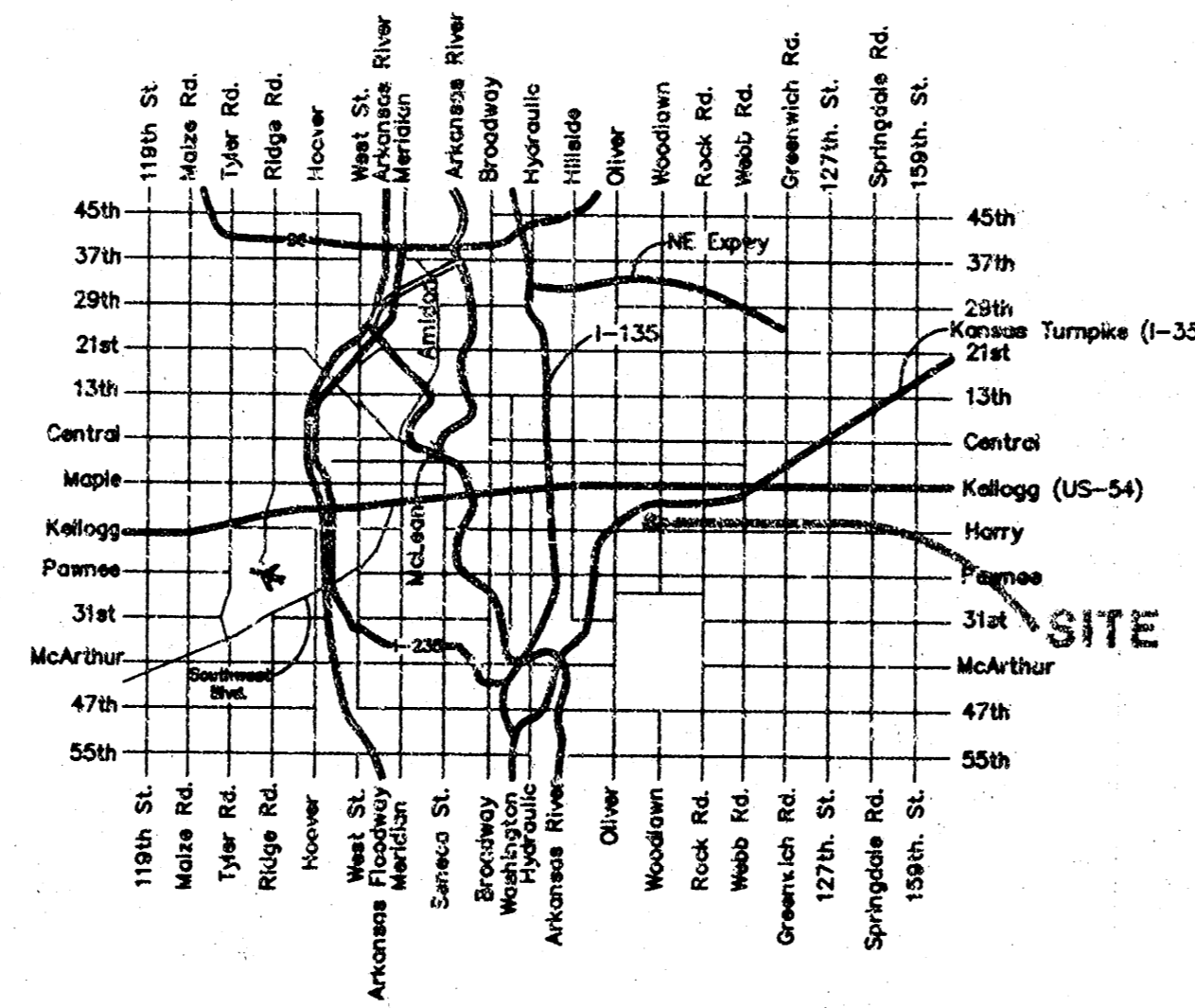
4. Trees and shrubs in public right-of-way which are in direct conflict with proposed new construction shall be removed by the Contractor with the Engineer's approval. Trees and shrubs which are not in direct conflict with proposed new construction shall be saved and protected from damage.

## BENCHMARK

R.R. Spike in N. face of Power Pole  
45' E. of S 1/4 Cor. 29-27-2E,  
6' S. of S. Curb on Harry, 1/2 mile  
E. of Rock Road.

## INDEX:

1. Plan / Profile, General Notes
2. Special Yard Inlet Detail
3. Copy of Plot



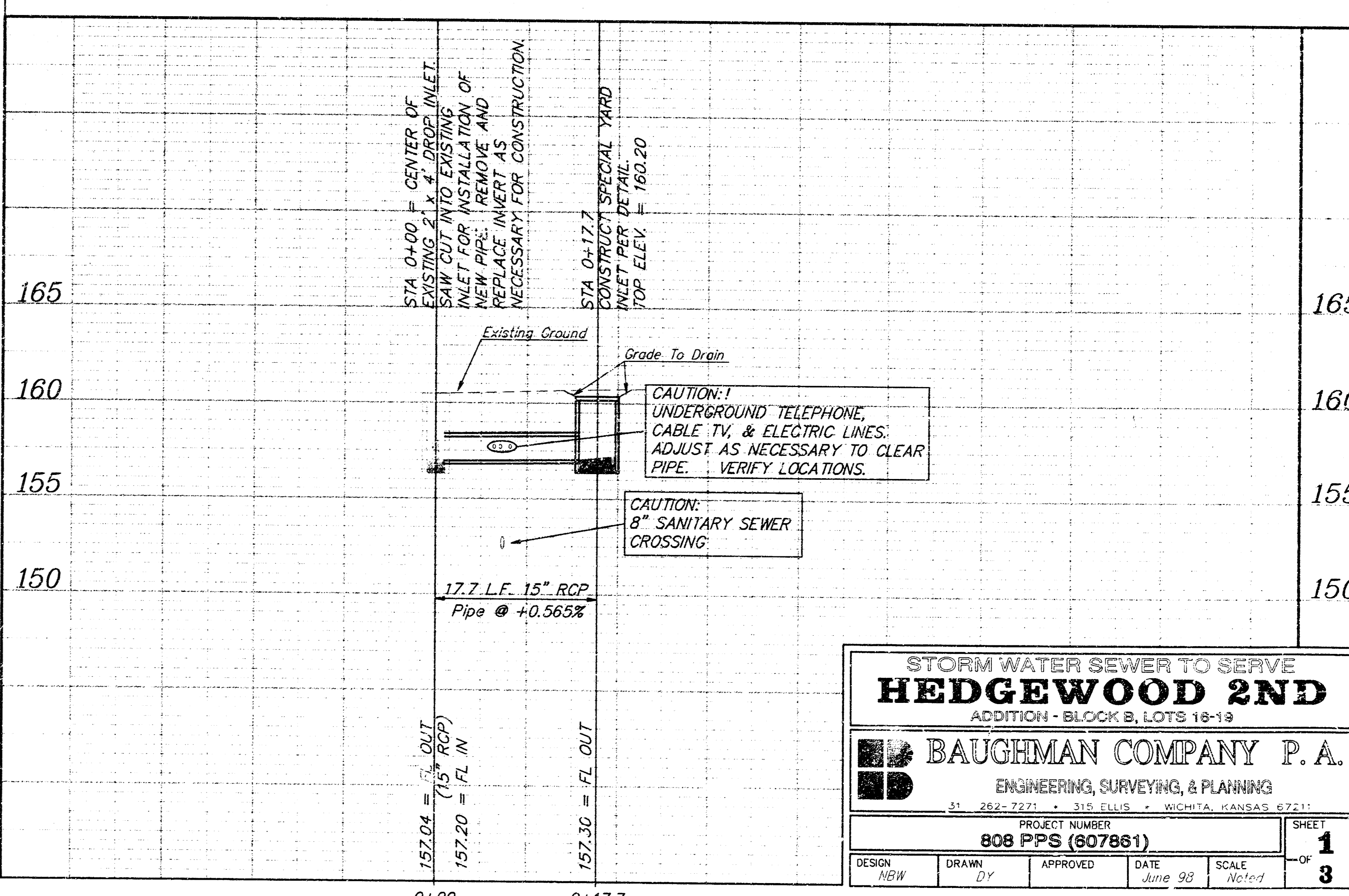
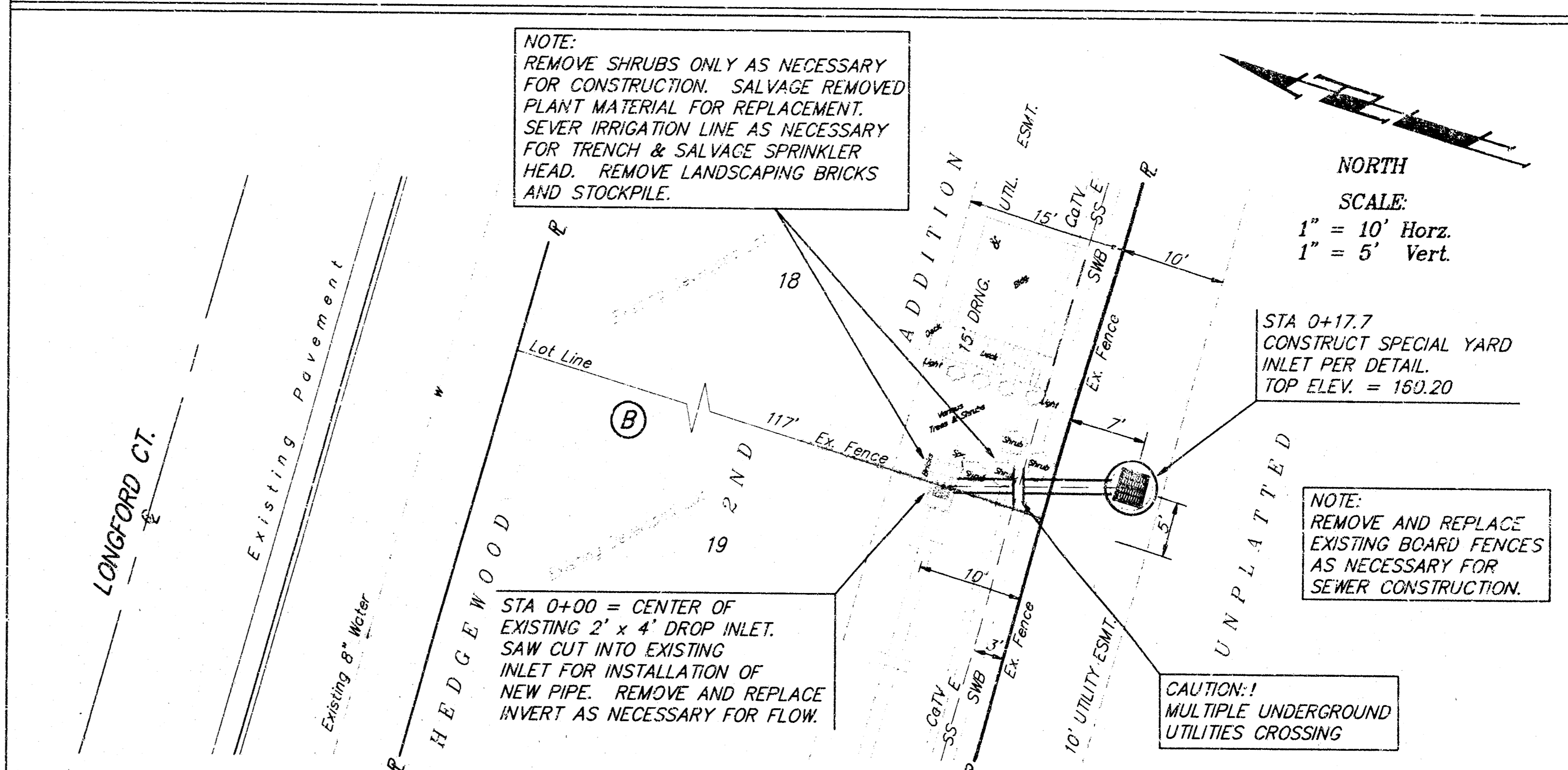
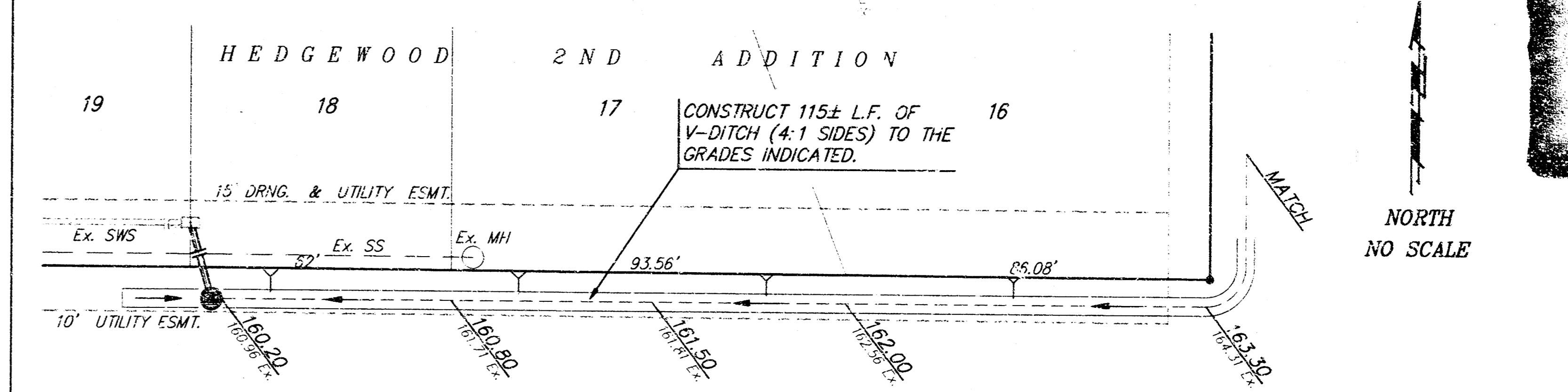
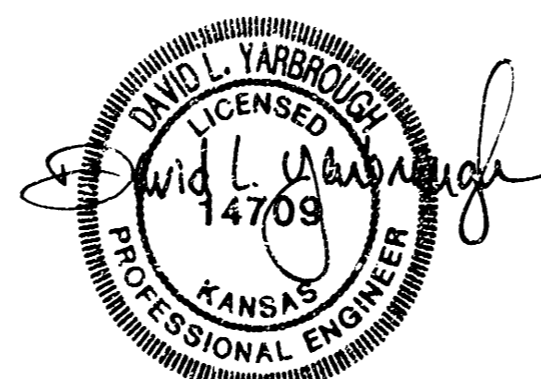
## LOCATION MAP

APPROVED AS NOTED  
BY CITY ENGINEER OF WICHITA

Storm Sewer VRH 6/7/98

NOTE TO CONTRACTORS

Inspection and testing for this project is to be provided by a Licensed Consulting Engineering Firm under contract with the Owner/Developer. Said inspection to be in accordance with the City of Wichita standard construction engineering practices and certified by a Licensed Professional Engineer. No work shall be performed in dedicated easements or public right-of-way by the Contractor without such inspection nor shall any work be commenced without written authorization by the City Engineer. All Construction and Materials shall comply with the City of Wichita Specifications and Standards (on file and available in the City Engineer's Office).



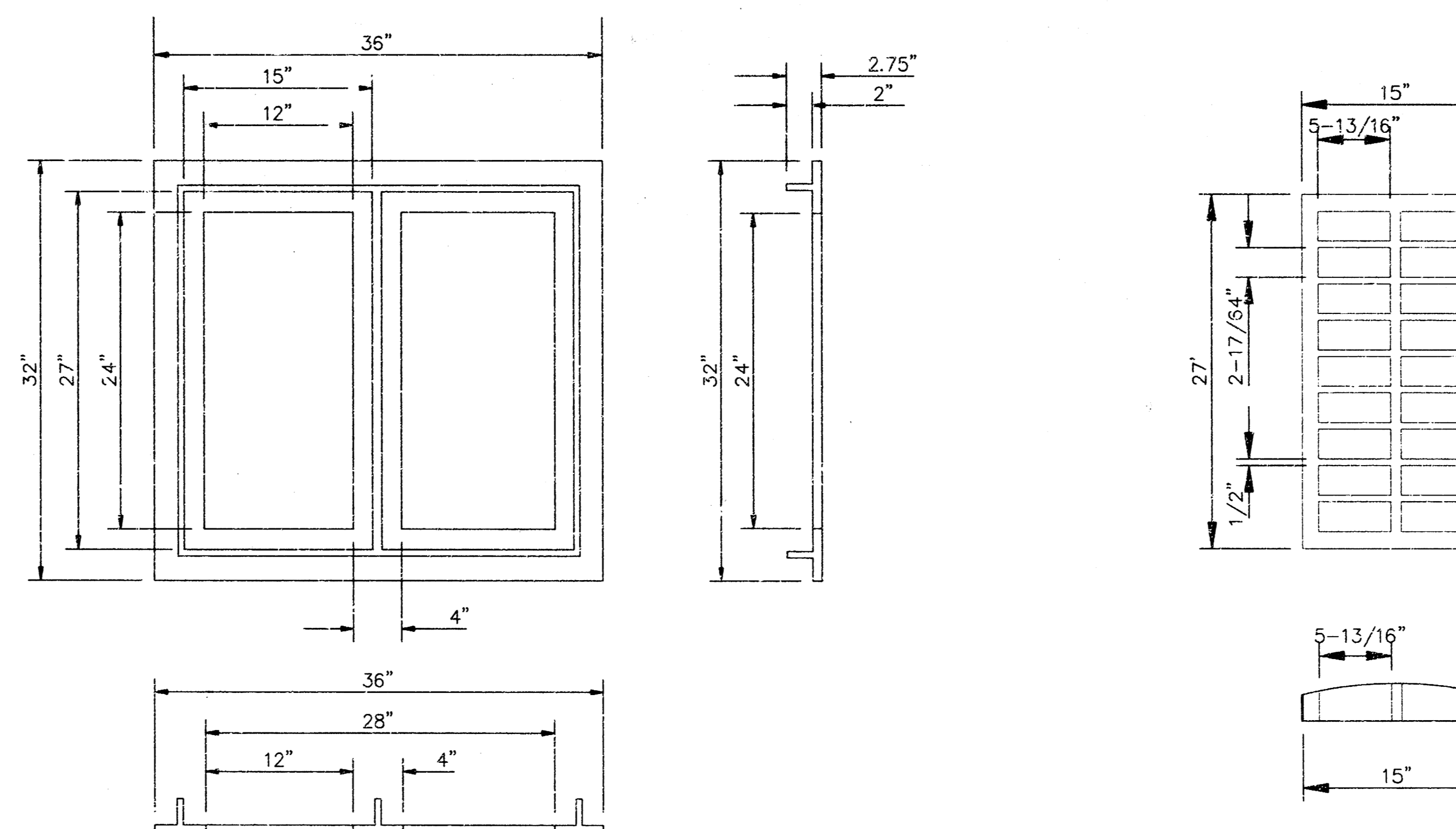
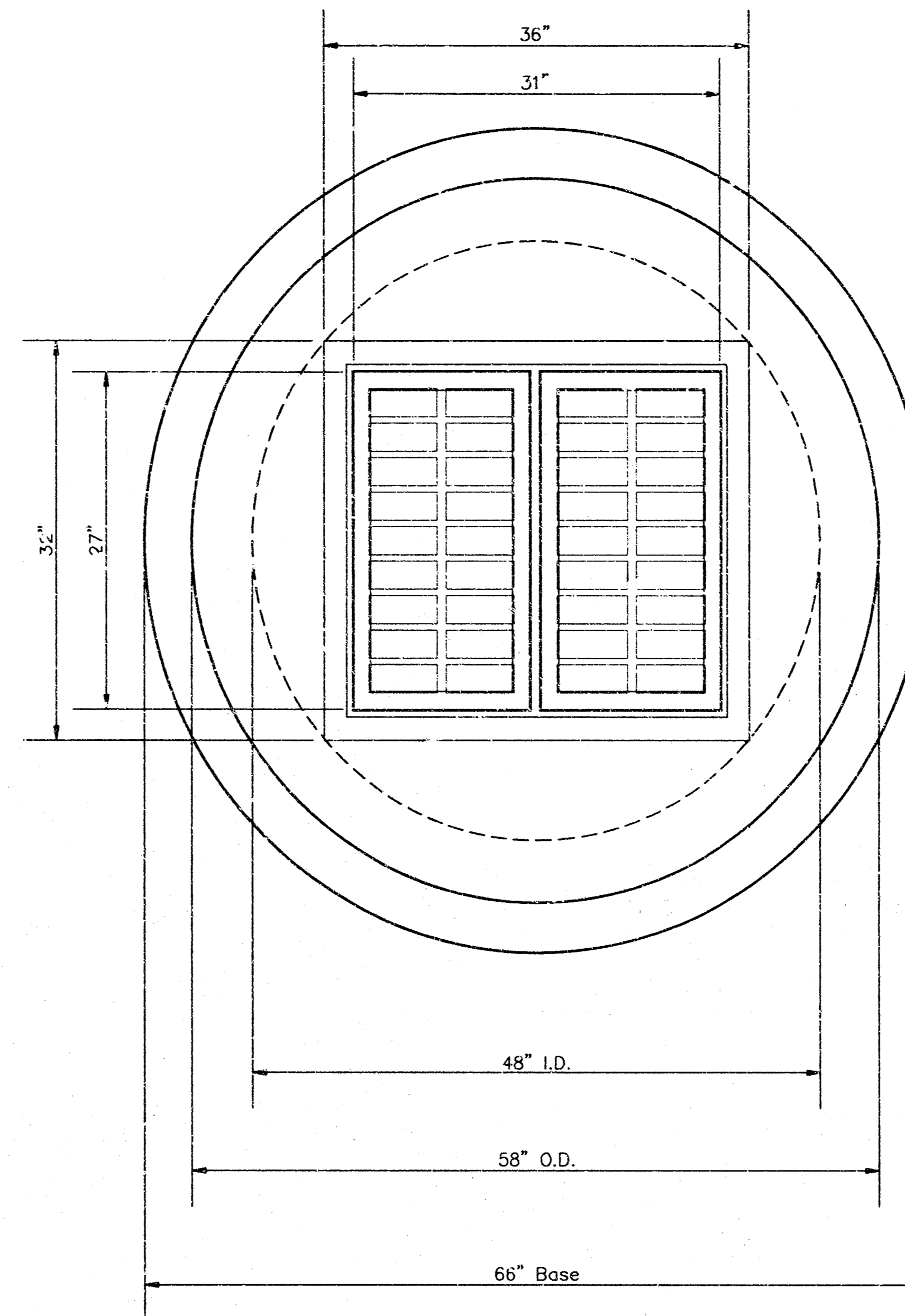
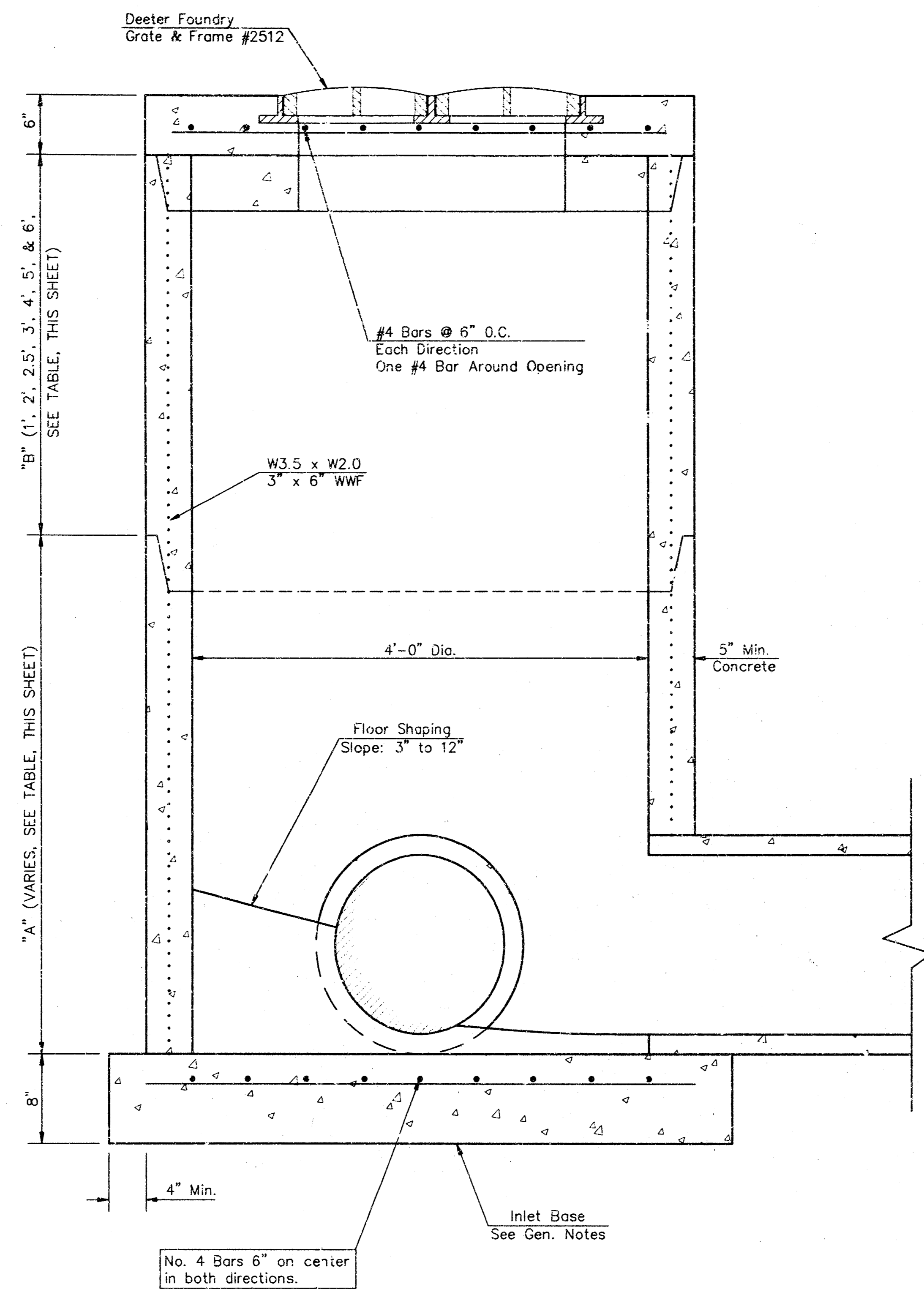
STORM WATER SEWER TO SERVE  
**HEDGEWOOD 2ND**  
ADDITION - BLOCK B, LOTS 16-19

**BAUGHMAN COMPANY P.A.**  
ENGINEERING, SURVEYING, & PLANNING  
31. 262-7221 315 ELLIS WICHITA, KANSAS 67211

PROJECT NUMBER  
**808 PPS (607861)**

DESIGN: NEW DRAWN: DY APPROVED: [Signature] DATE: June 98 SCALE: Noted

SHEET **1** OF **3**



**YARD INLET**

LINE #	STA.	TOP OF INLET	INLET FLOW	"A"	"B"
1	3+72.2	160.30	156.80	0.55'	2.5'

**GENERAL NOTES**

- Mortar used in masonry construction shall contain 8 sacks of cement per cubic yard. Concrete used in yard inlet bases shall conform to the requirements of concrete for concrete pavement construction as specified in the city standard paving specifications using city concrete cement mix without air entraining.
- Reinforcing steel shall be installed in the yard inlet bases and shall consist of no. 4 bars placed on 6" centers in both directions. The yard inlet base reinforcement shall be placed 6" above the bottom of the yard inlet base. All costs for furnishing and installing reinforcing steel shall be included in the unit price bid for the yard inlet.
- The floors of all yard inlet shall be shaped with flow channels such that the inlets will be self cleaning and free of areas where solids could be deposited. Flow channels shall be formed to match the bottom halves of the inflowing pipes and the outflowing pipe as shown by the drawings. Inlet floors shall have slopes of 3 inches per foot in the areas outside of the flow channels sloped toward the flow channels. Pipes laid through inlets shall have the top half removed to neat lines for the full inside diameter of the inlet. Inlet floors shall then be shaped around the bottom half of the pipe which forms the flow channel.
- Pipes installed within the excavation made for the inlet shall be cradled with concrete to the limits of the inlet excavation. When clay pipe is used, the cradle shall extend to the first joint outside the inlet. The cradle shall be terminated at the clay pipe joint in a manner which will maintain the flexibility of the joint. Cost of cradle within inlet excavation or to clay pipe joints adjacent to inlet shall be included in the unit price bid for the inlet.
- Inlet grate castings and inlet frame castings shall conform to the requirements as indicated in the standard specifications and as shown in the standard detail drawing.
- The crowns of inflowing pipes shall never be set lower than the crown of the outflowing pipe.
- Joints between inlet sections to be sealed with two wraps of extruded butyl rubber joint mastic meeting City of Wichita Type "P" Manhole Specifications.
- Special yard inlet shall be paid for at the unit price bid per each. All standard yard inlet diameters will be 4'.

NOTE: Grates shall be imprinted on the top surface with "CITY OF WICHITA" using letters at least 1" in height. Other marking methods may be approved by the engineer.

DEETER #2512 CATCH BASIN INLET GRATE & FRAME

**SPECIAL YARD INLET**

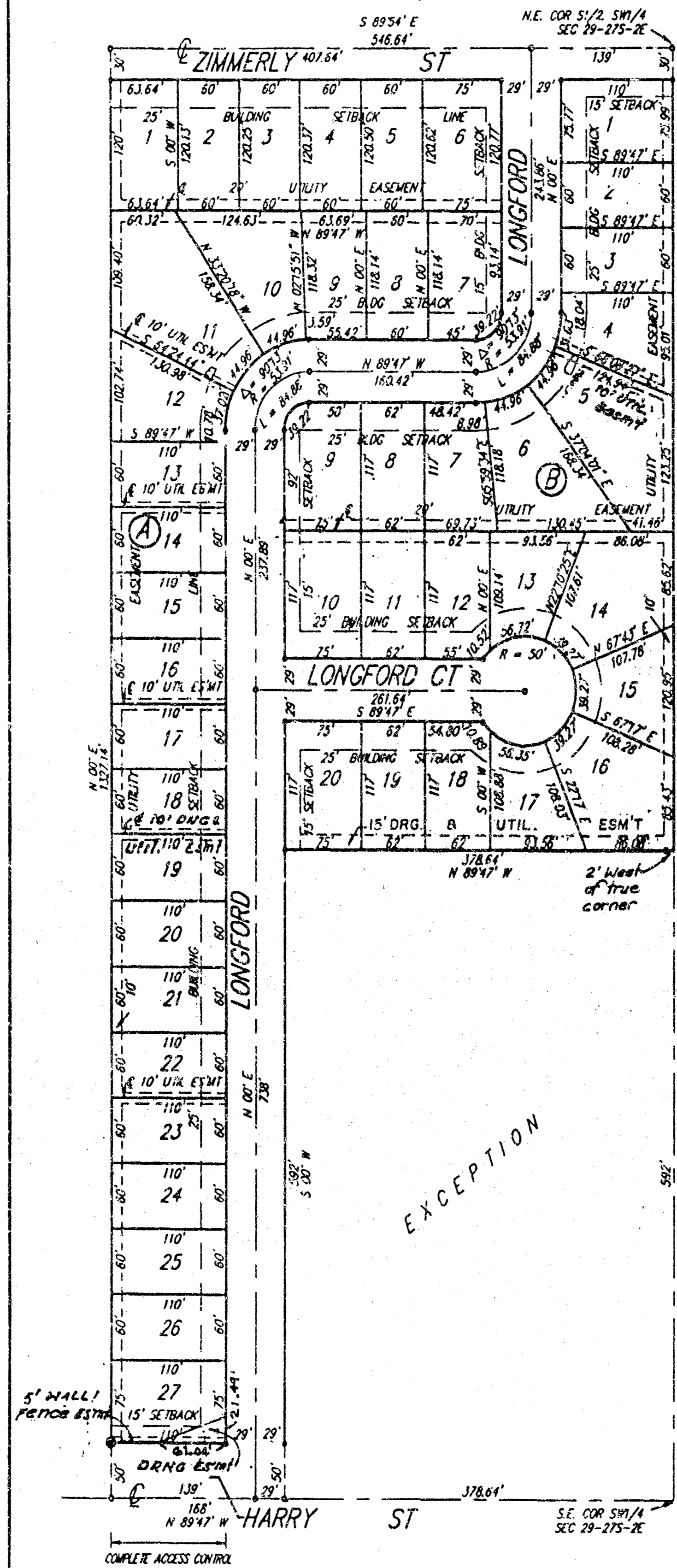
**BAUGHMAN COMPANY P. A.**  
ENGINEERING, SURVEYING, & PLANNING  
315 E. HILLIS • WICHITA, KANSAS 67211

PROJECT NUMBER: **808 FPS (607861)**

DESIGN: [ ] DRAWN: JAK APPROVED: [ ] DATE: 3-98 SCALE: NONE SHEET: **2** OF: **3**

# HEDGEWOOD 2ND ADDITION

WICHITA, SEDGWICK COUNTY, KANSAS



State of Kansas) SS We, Baughman Company, P.A., Surveyors in  
Sedgwick County) aforesaid County and State do hereby certify that we have surveyed  
and platted "HEDGEWOOD 2ND ADDITION", Wichita, Sedgwick County,  
Kansas and that the accompanying plat is a true and correct exhibit  
of the property surveyed, described as the east 16 2/3 acres of the  
S1/2 of the SW1/4 of Sec. 29, Twp. 27-S, R-2-E of the 6th P.M.,  
Sedgwick County, Kansas, except the east 378.64 feet of the south  
592 feet thereof.

Existing public easements and dedications being vacated by  
virtue of K.S.A. 12-512(b).

Baughman Company, P.A.

Date 11-2-92

Gregory F. Severns Surveyor  
Gregory F. Severns

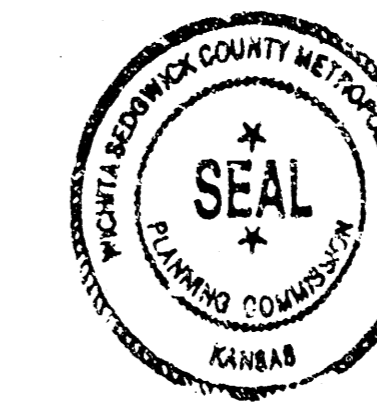


This plat of "HEDGEWOOD 2ND ADDITION",  
Wichita, Sedgwick County, Kansas, has been submitted to and approved  
by the Wichita-Sedgwick County Metropolitan Area Planning Commission,  
Wichita, Kansas.  
Dated this 10th day of September, 1992.

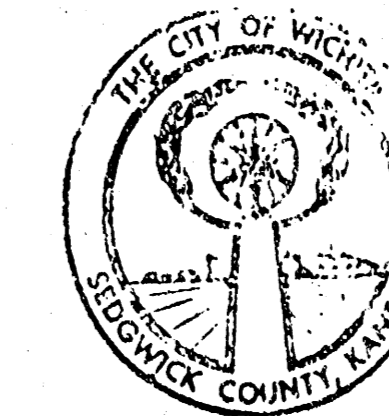
Wichita-Sedgwick County Metropolitan Area Planning Commission.

Christopher J. Goebel Chairman  
Christopher J. Goebel

Marvin S. Krout Secretary  
Marvin S. Krout



This plat approved and all dedications  
shown hereon accepted by the City Council of the City of Wichita,  
Kansas, this 15 day of December, 1992.



Frank M. O'Neil Mayor  
Frank M. O'Neil

Pat Burnett DEPUTY City Clerk  
Pat Burnett

Know all men by these presents that we,  
the undersigned, have caused the land described in the surveyors  
certificate to be platted into Lots, Blocks, and Streets, to be known  
as "HEDGEWOOD 2ND ADDITION", Wichita, Sedgwick County, Kansas.  
The utility easements are hereby granted as indicated for the construction  
and maintenance of all public utilities. The streets are  
hereby dedicated to and for the use of the public. All abutters  
rights of access to or from Harry St., over and across the south  
line of Lot 27, Block A, are hereby granted to the City of Wichita,  
Kansas. The wall/fence easement is hereby granted as indicated for  
the construction and maintenance of a private screening wall or  
fence and utility main lines and service lines are allowed to cross  
this easement.

Casado-McKay, Inc., a Kansas corporation  
John W. McKay Jr.  
John W. McKay Jr.

We, the undersigned, holder of a mortgage  
on the above described property, do hereby consent to this plat  
of "HEDGEWOOD 2ND ADDITION", Wichita, Sedgwick County, Kansas.

Marcelle Crandall  
Marcelle Crandall

State of Kansas) ss. The foregoing instrument acknowledged  
Sedgwick County) before me this 28 day of January, 1993, by Marcelle Crandall  
and Marcelle Crandall.

My Appt. Exp. 2-3-95  
Mildred E. Franz Notary Public  
Mildred E. Franz

State of Kansas) ss. The foregoing instrument acknowledged before  
Sedgwick County) me, this 27 day of October, 1992, by John  
W. McKay Jr., President of Casado-McKay, Inc., a Kansas  
corporation, on behalf of the corporation.

My Appt. Exp. 2-3-95  
Mildred E. Franz Notary Public  
Mildred E. Franz

Entered on transfer record this 14th day  
of April, 1993.



Susan E. Crockett-Spoon County Clerk  
Susan E. Crockett-Spoon

State of Kansas) SS This is to certify that this plat has been  
Sedgwick County) filed for record in the office of the Register of Deeds, this 13th day  
of April, 1993, at 9 o'clock A.M., and is duly re-  
corded.

Pat Kettler Register of Deeds  
Pat Kettler by Ed Resa

Ed Resa Deputy  
Ed Resa