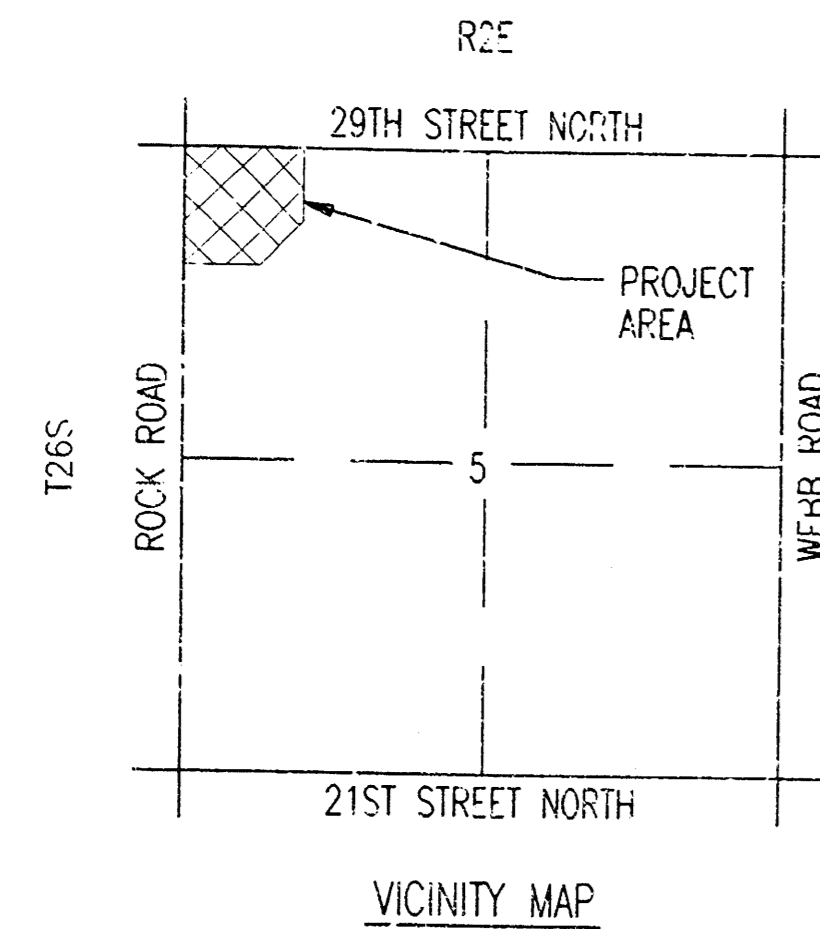


CITY OF WICHITA, KANSAS
 MICHAEL E. LINDEBAK, P.E., CITY ENGINEER
STORM WATER SEWER EXTENSION
 IN
CENTRAL CHRISTIAN ADDITION

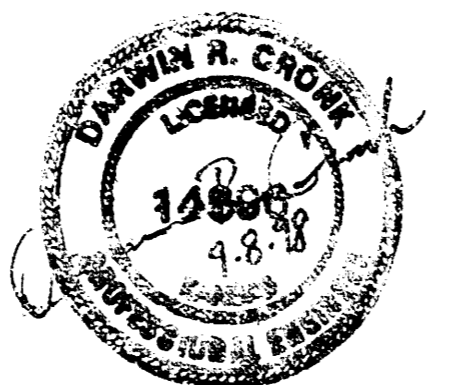
CITY OF WICHITA PRIVATE PROJECT NO. 844PPS (68786)
 SEPTEMBER 1998

PLANS PREPARED BY
PROFESSIONAL ENGINEERING CONSULTANTS, P.A.
 WICHITA, KANSAS



APPROVED AS NOTED
 BY CITY ENGINEER OF WICHITA

SANITARY SEWERS _____
 STORM SEWERS VRH 9/18/98
 DRIVEWAY APPROACHES _____
 WATER MAINS _____
 PAVING _____



*Booked
 8/13/03
 R.D.L.*

GENERAL NOTES

UNDERGROUND UTILITY SERVICE LINES AND OVERHEAD UTILITY POLE LINES ARE TO BE ADJUSTED AS NECESSARY BY OTHERS PRIOR TO CONSTRUCTION UNLESS THE PLANS SPECIFICALLY CALL FOR THEIR ADJUSTMENT BY THE CONTRACTOR. EXISTING UTILITIES AND THEIR LOCATION, AS SHOWN ON THE PLANS, REPRESENT THE BEST INFORMATION OBTAINABLE FOR DESIGN. LOCATION INFORMATION HAS BEEN OBTAINED FROM THE VARIOUS UTILITY COMPANIES AND IS EITHER FROM COMPANY RECORD DRAWINGS OR COMPANY PROVIDED FIELD LOCATIONS. THE CONTRACTOR WILL BE REQUIRED TO WORK AROUND EXISTING UTILITIES WITHIN THE RIGHT-OF-WAY WHICH DO NOT CONFLICT WITH PROPOSED CONSTRUCTION. CONTRACTOR SHALL SATISFY HIMSELF OF SUBSURFACE CONDITIONS PRIOR TO BIDDING.

TREES AND SHRUBS WHICH ARE IN DIRECT CONFLICT WITH PROPOSED NEW CONSTRUCTION SHALL BE REMOVED BY THE CONTRACTOR WITH THE ENGINEER'S APPROVAL. TREES AND SHRUBS WHICH ARE NOT IN DIRECT CONFLICT WITH PROPOSED NEW CONSTRUCTION SHALL BE SAVED AND PROTECTED FROM DAMAGE.

RUBBLE FROM THE REMOVAL OF MISCELLANEOUS STRUCTURES AND EXCESS EXCAVATED MATERIAL SHALL BE DISPOSED OF ON SITES TO BE PROVIDED BY THE CONTRACTOR AND APPROVED AS NOTED.

ALL DISPOSAL SITES MUST BE APPROVED BY THE KANSAS DEPARTMENT OF HEALTH AND ENVIRONMENT. MATERIAL EITHER STOCKPILED OR DISPOSED OF IN A FLOOD PLAIN WOULD REQUIRE A KANSAS STATE EROSION CONTROL PLAN. ANY MATERIAL DUMPED IN WATERS OF THE UNITED STATES OR WETLANDS IS SUBJECT TO U.S. CORPS OF ENGINEERS PERMITTING REGULATIONS. ANY MATERIAL BURIED OR STOCKPILED BEYOND APPROVED CONSTRUCTION LIMITS WOULD REQUIRE ADDITIONAL ARCHAEOLOGICAL INVESTIGATIONS UNLESS BURIED IN A PREVIOUSLY APPROVED BORROW LOCATION.

CONTRACTOR SHALL PROVIDE A MINIMUM FORTY-EIGHT (48) HOUR ADVANCE NOTICE (EXCLUDING WEEKENDS AND HOLIDAYS) PRIOR TO BEGINNING ANY EXCAVATION TO KANSAS ONE-CALL SYSTEM, A UTILITY LOCATION SERVICE, AT (316) 687-2470 TO REQUEST THE FOLLOWING UTILITY COMPANIES TO LOCATE ALL EXISTING LINES WITHIN THE PROJECT AREA: K.G.E. GAS, PEOPLES NATURAL GAS, K.G.E. ELECTRIC, SOUTHWESTERN BELL TELEPHONE, MULTIMEDIA CABLEVISION, CITY OF WICHITA SEWER MAINTENANCE AND CITY OF WICHITA WATER DEPARTMENT.

THE CONTRACTOR SHALL BE RESPONSIBLE FOR PRESERVING PROPERTY IRONS. THE CONTRACTOR WILL BE REQUIRED TO RE-ESTABLISH ANY PROPERTY IRONS WHICH ARE DAMAGED OR DESTROYED BY HIS CONSTRUCTION OPERATIONS. SUCH IRONS SHALL BE RE-ESTABLISHED BY A LICENSED LAND SURVEYOR IN ACCORDANCE WITH STATE LAWS.

THE WATER DEPARTMENT SHALL FIELD LOCATE WATER VALVES ONE TIME DURING CONSTRUCTION WHEN REQUESTED BY THE CONTRACTOR. IT SHALL BE THE CONTRACTOR'S RESPONSIBILITY TO PRESERVE SUCH FIELD LOCATIONS DURING THE CONSTRUCTION PROCESS. WATER VALVES, WATER VALVE BOXES OR FIRE HYDRANTS DAMAGED DURING CONSTRUCTION SHALL BE REPAIRED BY THE CONTRACTOR AT HIS OWN EXPENSE.

THE CONTRACTOR SHALL ADJUST WATER VALVE BOXES AS DIRECTED BY THE ENGINEER.

ALL LAWN/TURF AREAS DISTURBED BY CONSTRUCTION OF THE PROPOSED IMPROVEMENTS SHALL BE RESTORED WITH THE SAME GRASS/SOD AS EXISTING. RESTORATION OF DISTURBED AREAS SHALL INCLUDE, BUT NOT BE LIMITED TO, TOP SOIL PREPARATION, SEEDING, MULCH, AND/OR RESEEDING. ALL SEEDING/SODDING WORK SHALL BE IN ACCORDANCE WITH THE CITY OF WICHITA STANDARD SPECIFICATIONS AND THE CITY OF WICHITA ADMINISTRATIVE REGULATION NO. 8278 WHICH GOVERNS CLEANUP AND RESTORATION OR REPLACEMENT FOLLOWING CONSTRUCTION.

ALL CONSTRUCTION AND MATERIALS FOR STORM SEWER CONSTRUCTION SHALL BE IN ACCORDANCE WITH CITY OF WICHITA STANDARD SPECIFICATIONS.

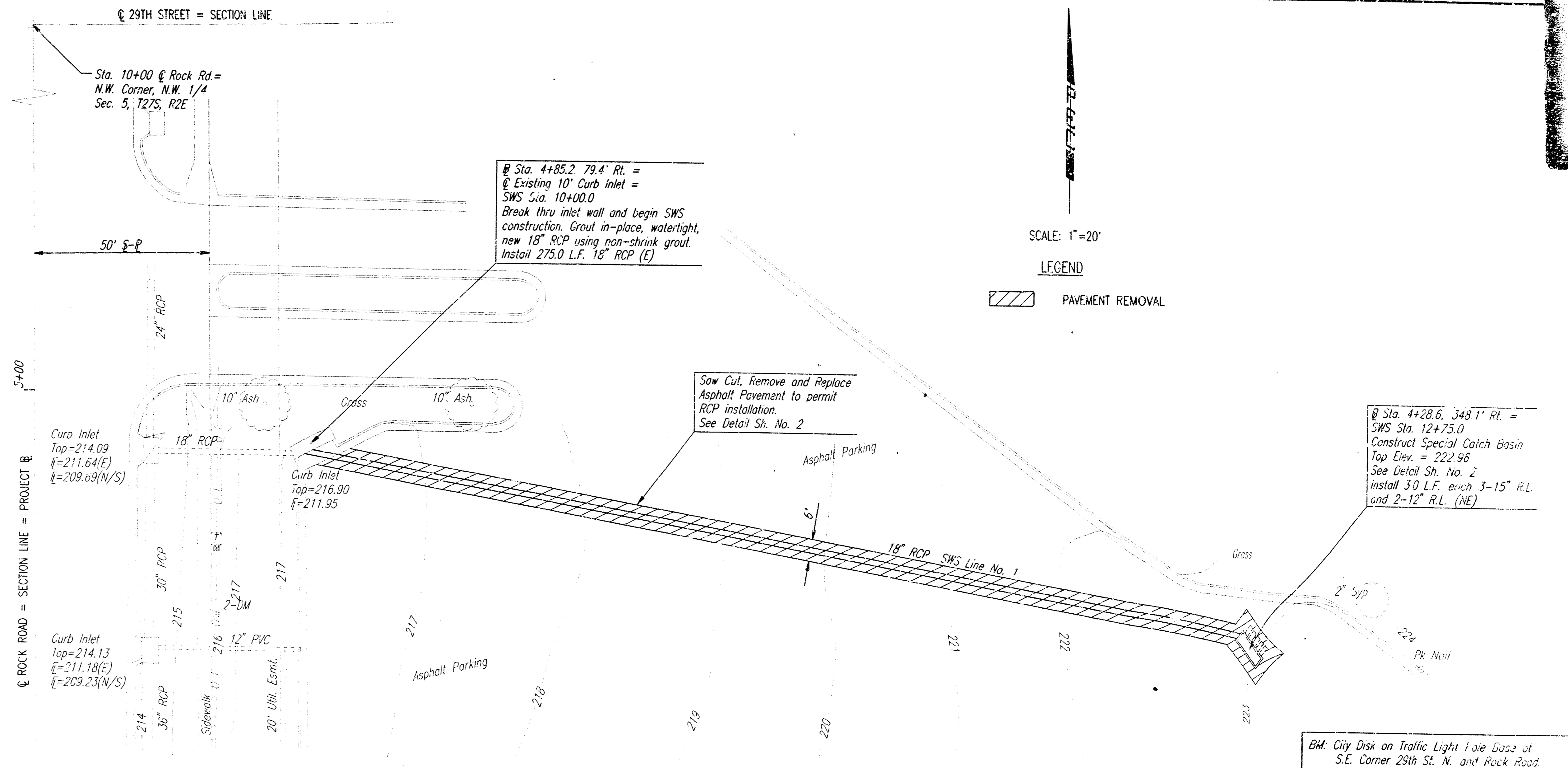
ALL ELEVATIONS SHOWN ARE BASED ON CITY OF WICHITA DATUM.

THE CONTRACTOR SHALL LIMIT THE EXTENT OF TRENCH TO REMAIN OPEN OVERNIGHT AND WEEKENDS TO LESS THAN 50 FEET.

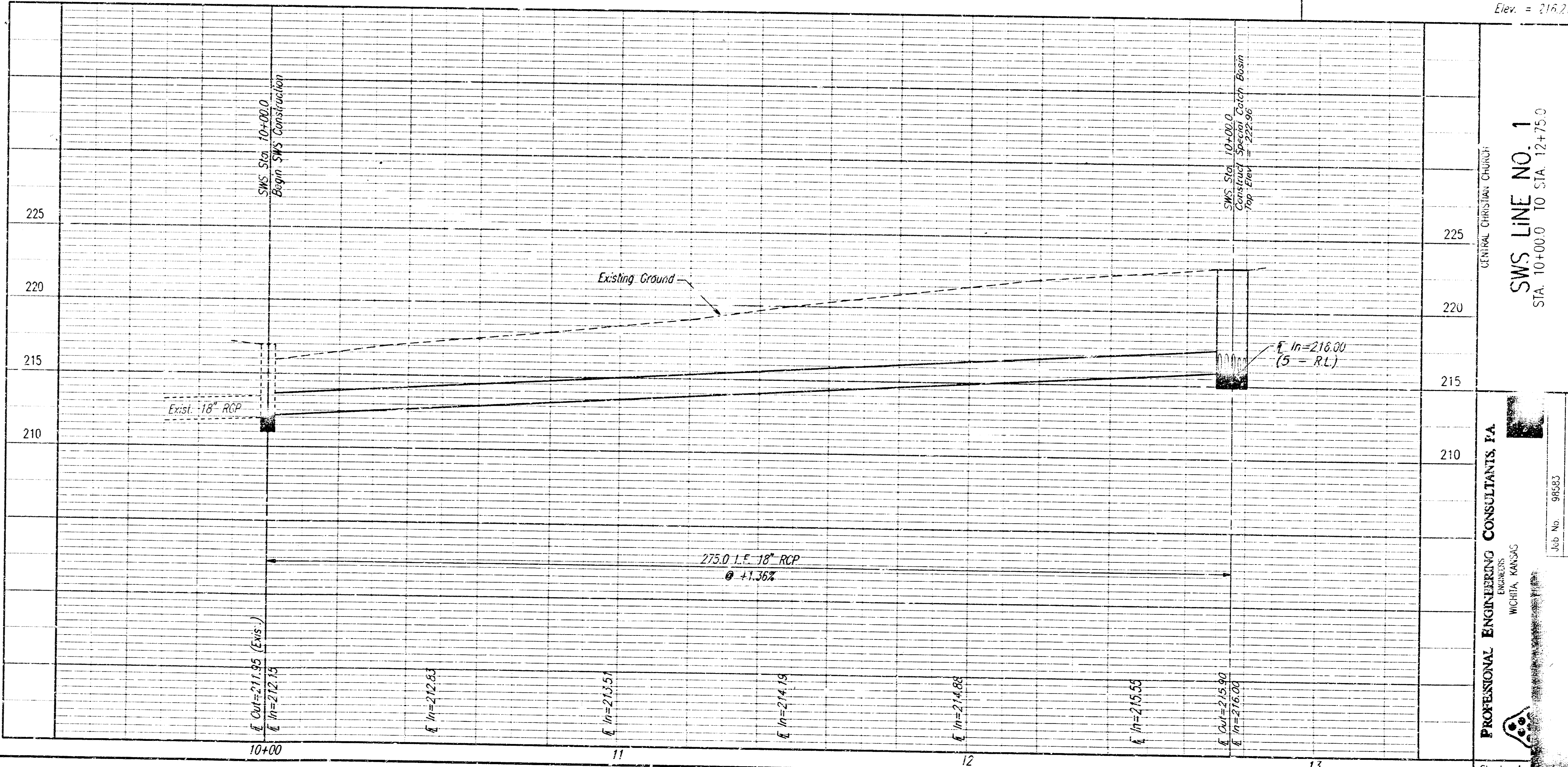
THE CONTRACTOR SHALL AVOID REMOVAL OR TRIMMING OF ANY TREES OR SHRUBS WHERE POSSIBLE. WHERE THE CONTRACTOR BELIEVES THE REMOVAL OR TRIMMING IS UNAVOIDABLE, HE SHALL COORDINATE SUCH WORK WITH THE ENGINEER.

IN URBAN TRAFFIC GENERATED OUTSIDE THE PROJECT AREA AND LOCAL BUSINESS OR RESIDENTIAL TRAFFIC GENERATED WITHIN THE PROJECT AREA ARE TO BE CARRIED THROUGH CONSTRUCTION AS FURTHER FORMALIZED BY PROJECT SPECIAL PROVISIONS.

INSPECTION AND TESTING FOR THIS PROJECT IS TO BE PROVIDED BY A LICENSED CONSULTING ENGINEERING FIRM CONTRACTED BY THE OWNER/DEVELOPER. SAID INSPECTION TO BE IN ACCORDANCE WITH THE CITY OF WICHITA STANDARD CONSTRUCTION ENGINEERING PRACTICES AND CERTIFIED BY A LICENSED PROFESSIONAL ENGINEER. NO WORK SHALL BE PERFORMED IN DEDICATED EASEMENTS OR THE PUBLIC RIGHT-OF-WAY BY THE CONTRACTOR UNTIL SUCH INSPECTION IS ARRANGED FOR AND REQUIRED BODYS HAVE BEEN SUBMITTED TO AND APPROVED BY THE CITY; NOR SHALL ANY WORK BE COMMENCED IN DEDICATED EASEMENTS OR PUBLIC RIGHT-OF-WAY WITHOUT WRITTEN AUTHORIZATION BY THE CITY ENGINEER. IMPROVEMENTS PERFORMED UNDER THIS PROJECT SHALL NOT BE ACCEPTED BY THE CITY UNTIL ALL APPLICABLE DOCUMENTATION HAS BEEN SUBMITTED TO THE CITY ENGINEER. THIS MAY INCLUDE: AS-BUILT DRAWINGS, INSPECTION LOGS, TEST DOCUMENTATION, TV TAPES, AND A CERTIFICATE OF COMPLETION. THE ABOVE SHALL BE PERFORMED BY THE CONSULTING FIRM CONTRACTED TO INSPECT THIS PROJECT.



SCALE: 1"=20'
LEGEND
 PAVEMENT REMOVAL



BM. City Disk on Traffic Light Pole East of S.E. Corner 29th St. N. and Rock Road. Elev. = 216.71

SWS LINE NO. 1
 STA. 10+00.0 TO STA. 12+75.0

PROFESSIONAL ENGINEERING CONSULTANTS, P.A.
 ENGINEERS
 WICHITA, KANSAS
 Job No. 98483
 Date: SEP 11, 1998
 C.O.W. PRIVATE PROJ. NO. 844PPS

GRATE DIMENSIONS, TYF. & REINFORCING											
Inlet Dimensions		Outfall Pipe Dia. (In.)	Approved Grates				Reinforcing				
Width (In.)	Height (In.)		Neenah Foundry Co. †		Daeler Foundry Co. †		sl	h1**	h2**	vl**	
		Catalog No.	Grate Dim. A(In.) B(In.)	Catalog No.	Grate Dim. A(In.) B(In.)	Size & Spa.	Size & Spa.	Size & Spa.	Size & Spa.	Size	Size
52	90	18	R-4990-MX	39 2	3990-M	39 2	*4@ 9'	*4@ 9'	*4@ 9'	*4@ 9'	

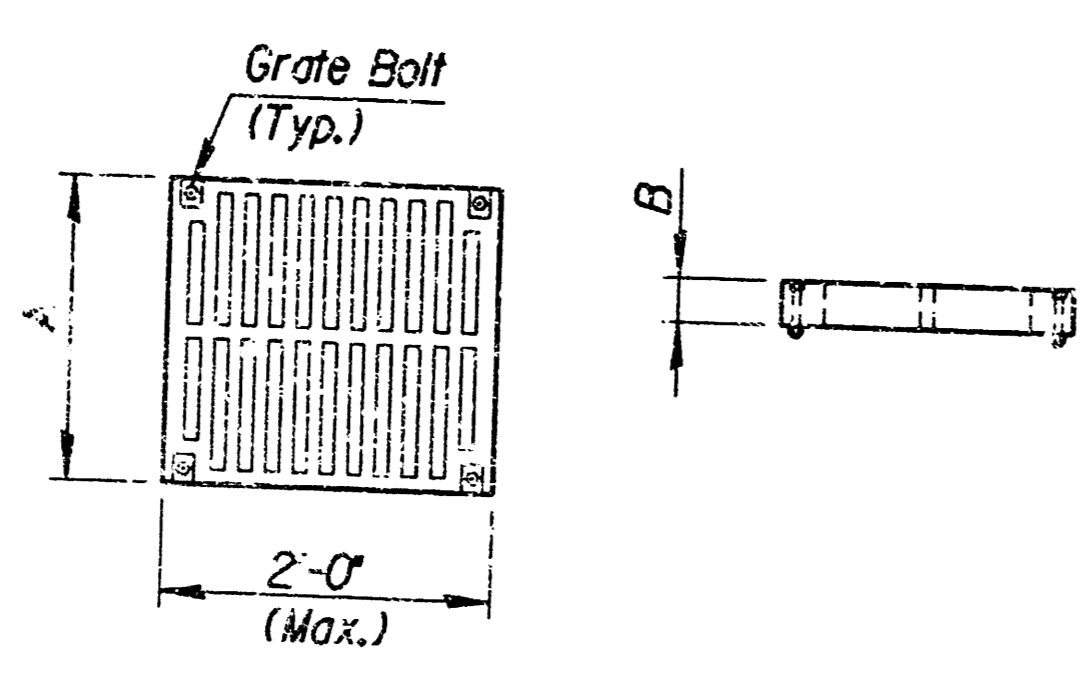
- † Type A Grate
- The trench grate and frame shall be as shown above or approved equal. The grate shall be the heavy duty type with a design loading of 120-44 and shall be bicycle safe. ** Field Cut or Bend for clearance.

The grate and frame material shall be gray cast iron conforming to the requirements of the "Standard Specifications For Gray Iron Castings", ASTM A 48, Grade 30.

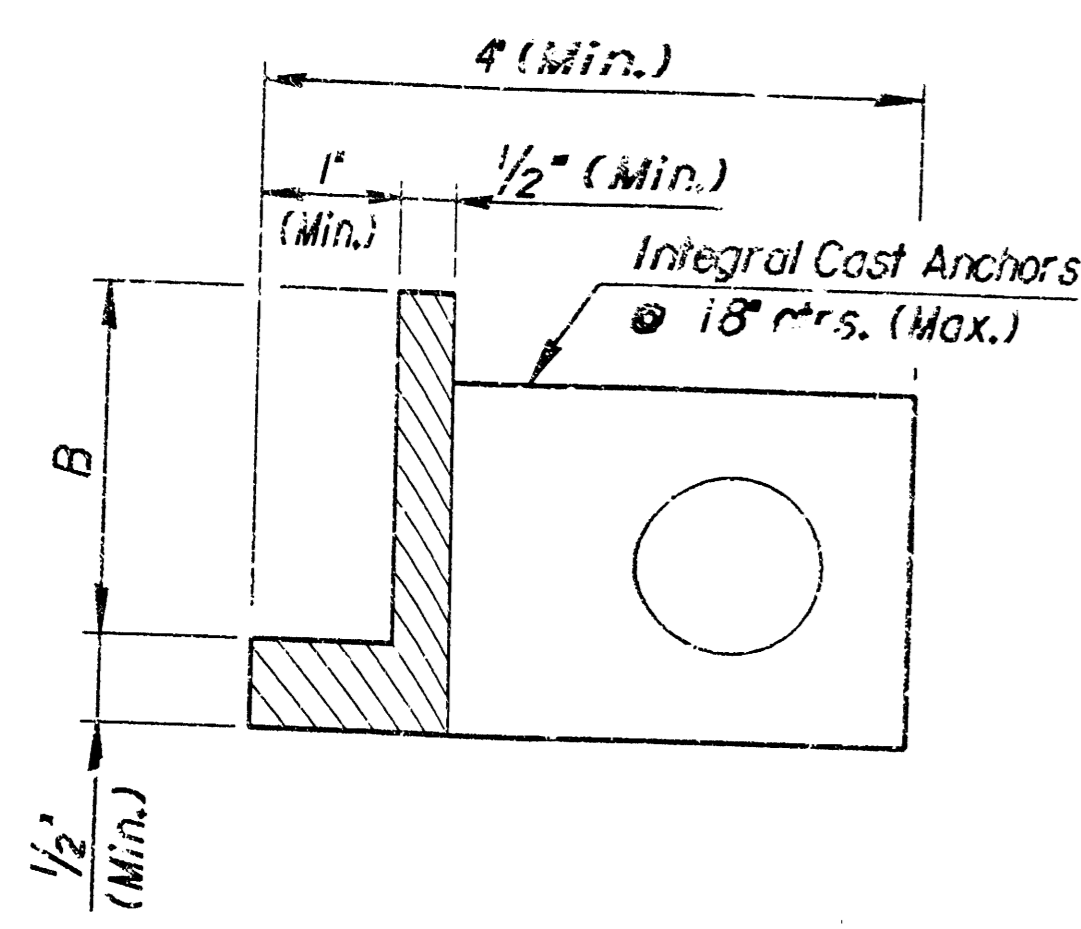
- Use Air-Entrained Concrete with a minimum 28-day compressive strength of 3000 PSI throughout. Floor of basin shall be sloped as shown.

- Bevel all exposed edges of the concrete with a 3/4" triangular molding.

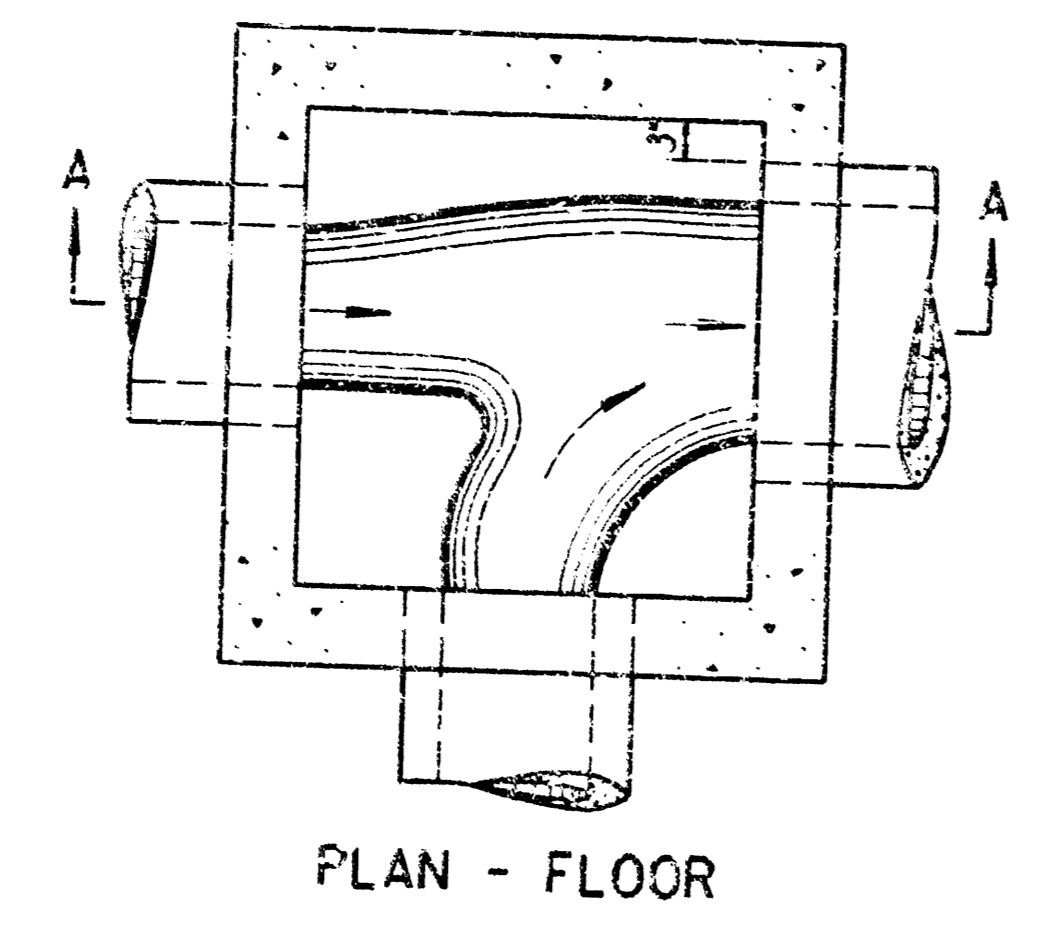
- All reinforcement shall conform to the requirements of "Standard Specifications For Deformed and Plain Billet-Steel Bars For Concrete Reinforcement", ASTM A615, Grade 50.



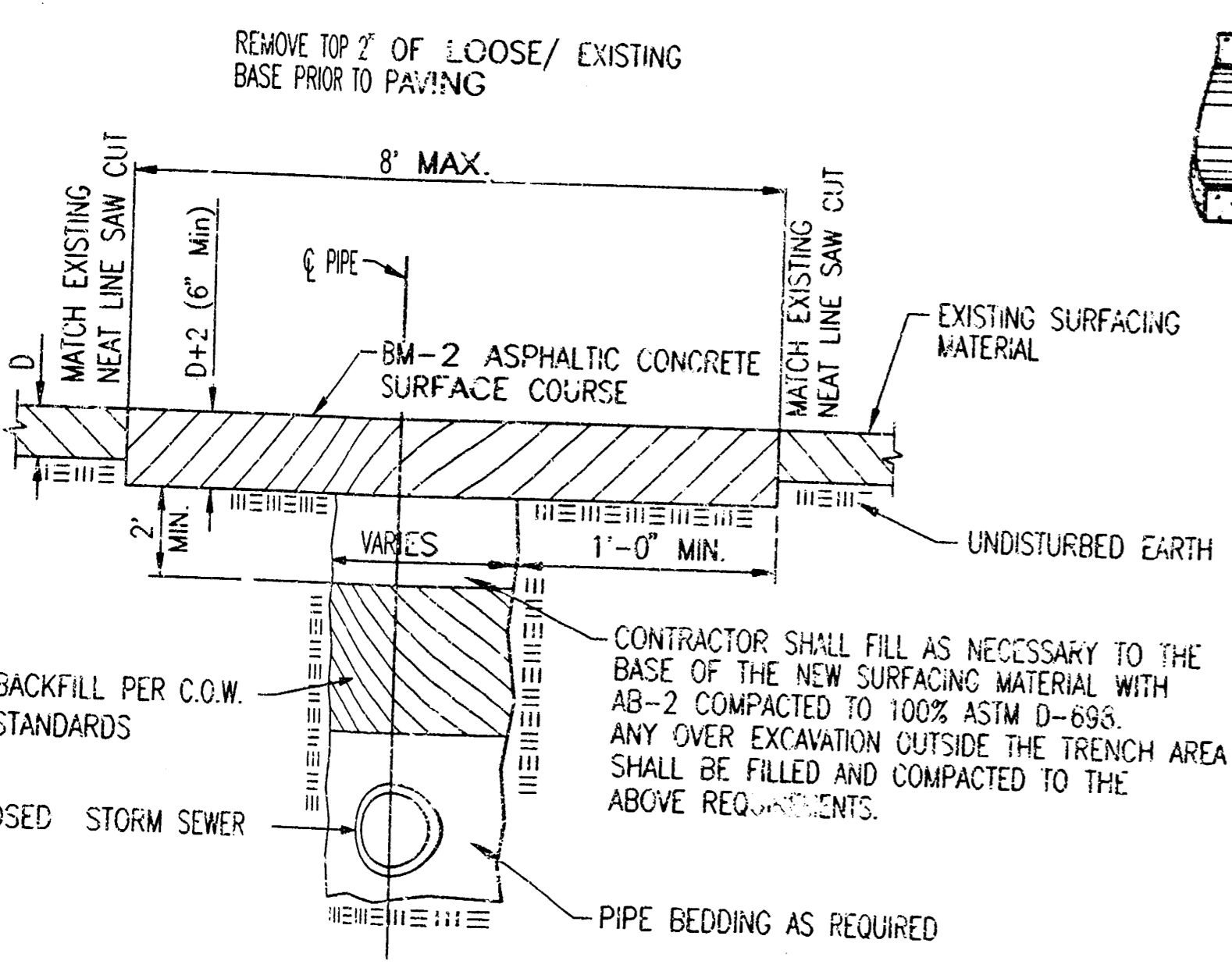
PLAN END VIEW
GRATE DETAIL



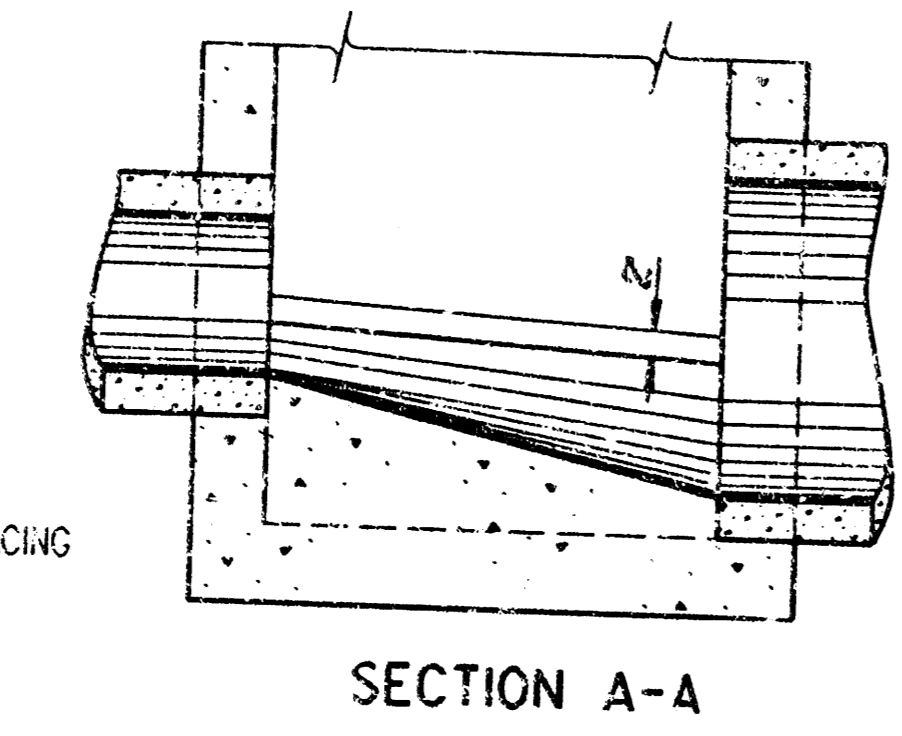
TYPICAL SECTION GRATE FRAME



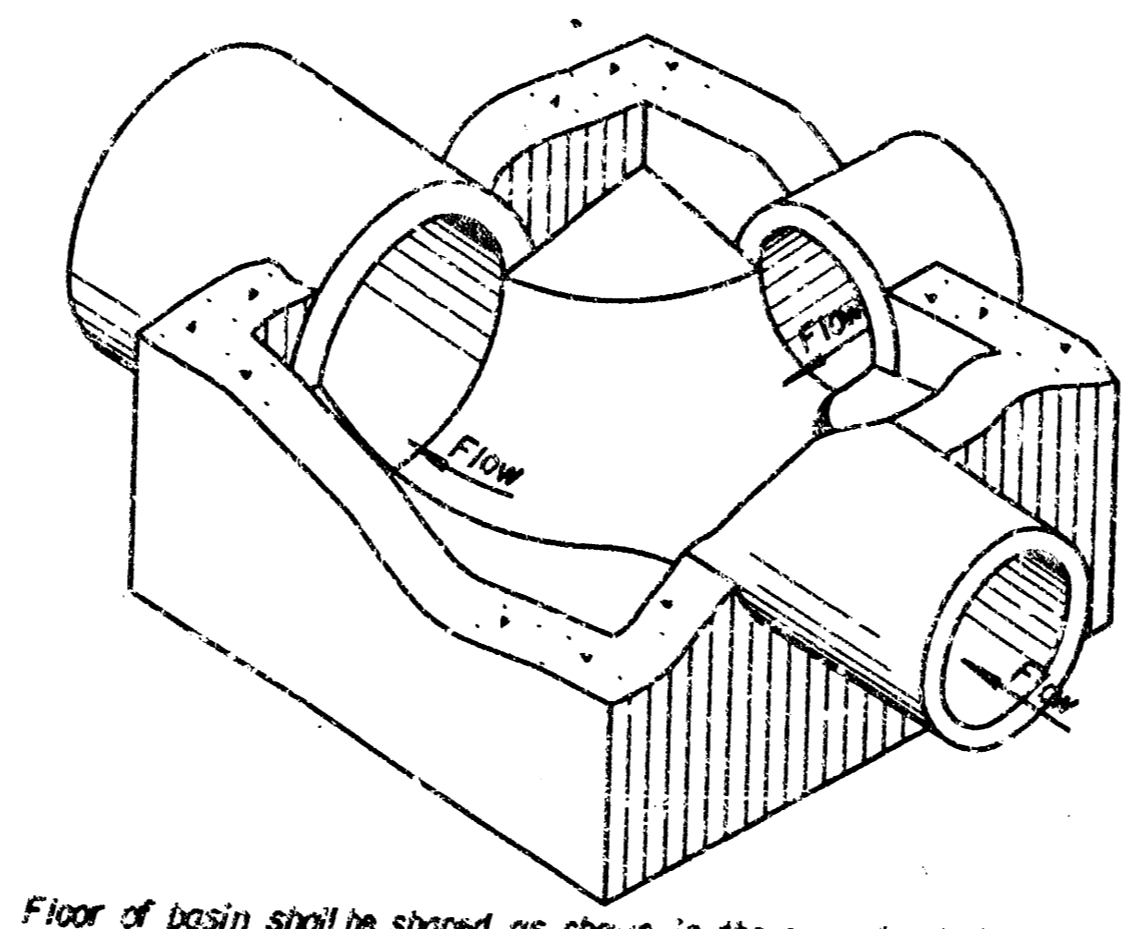
PLAN - FLOOR



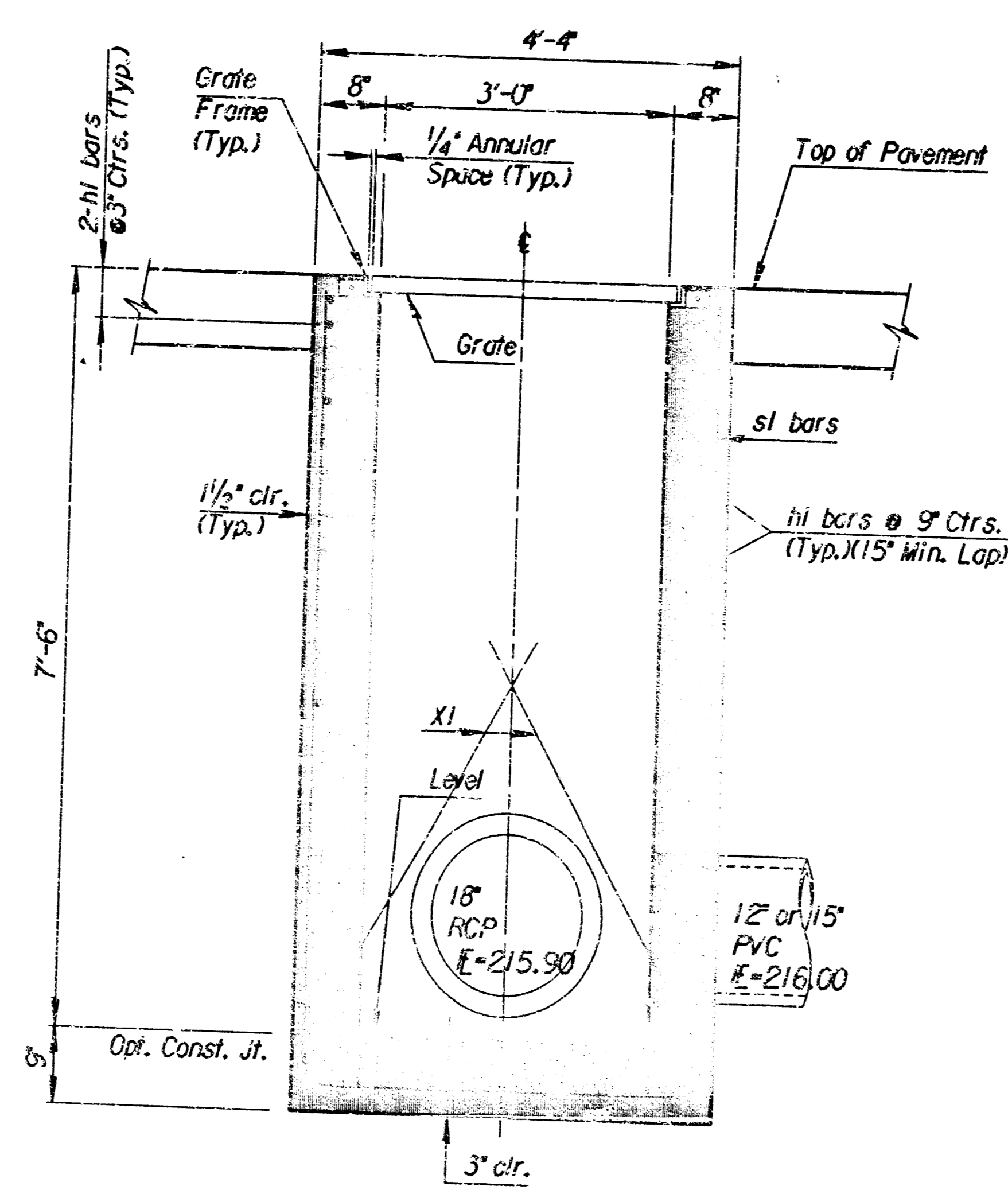
PAVEMENT REMOVAL AND REPLACEMENT DETAIL



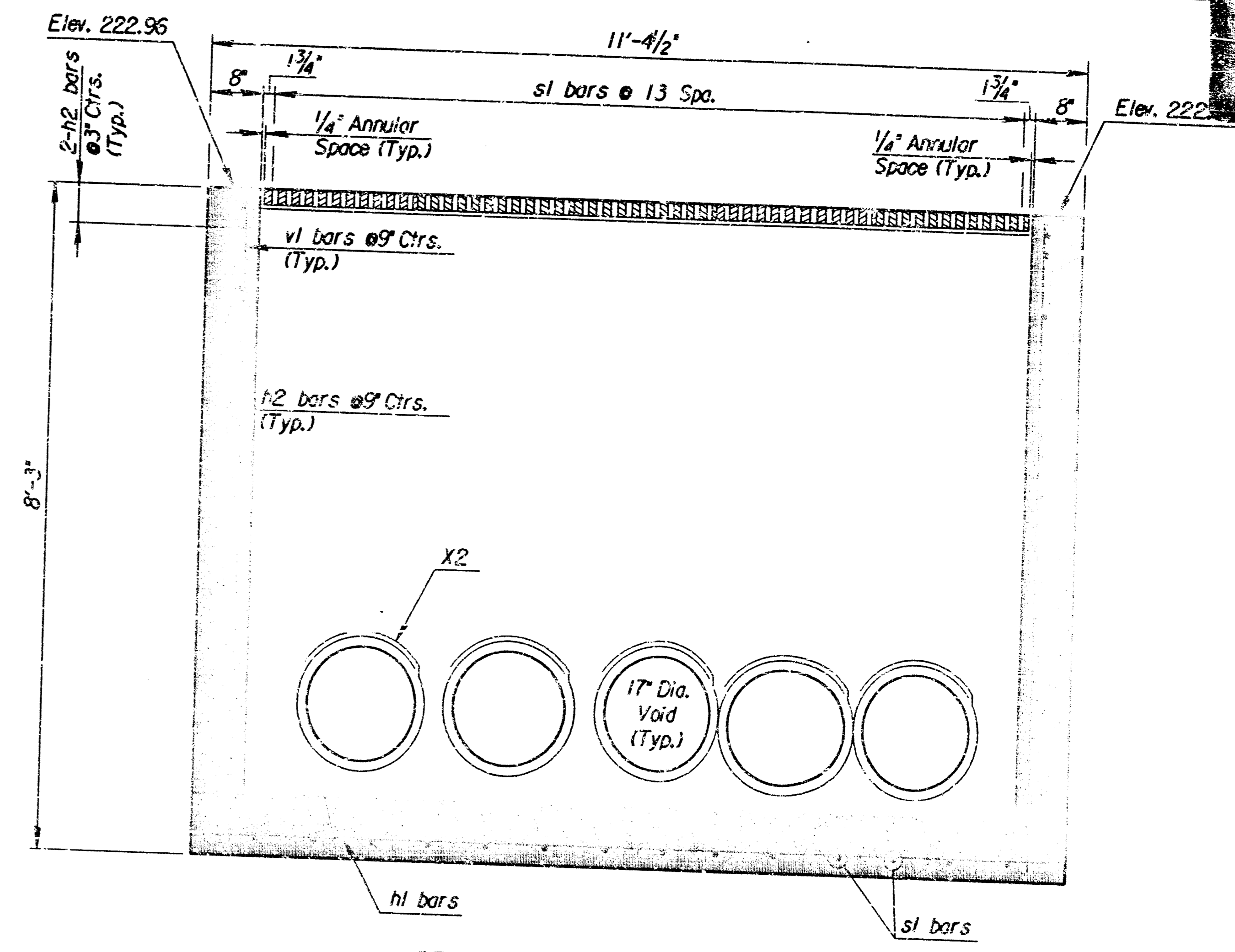
SECTION A-A



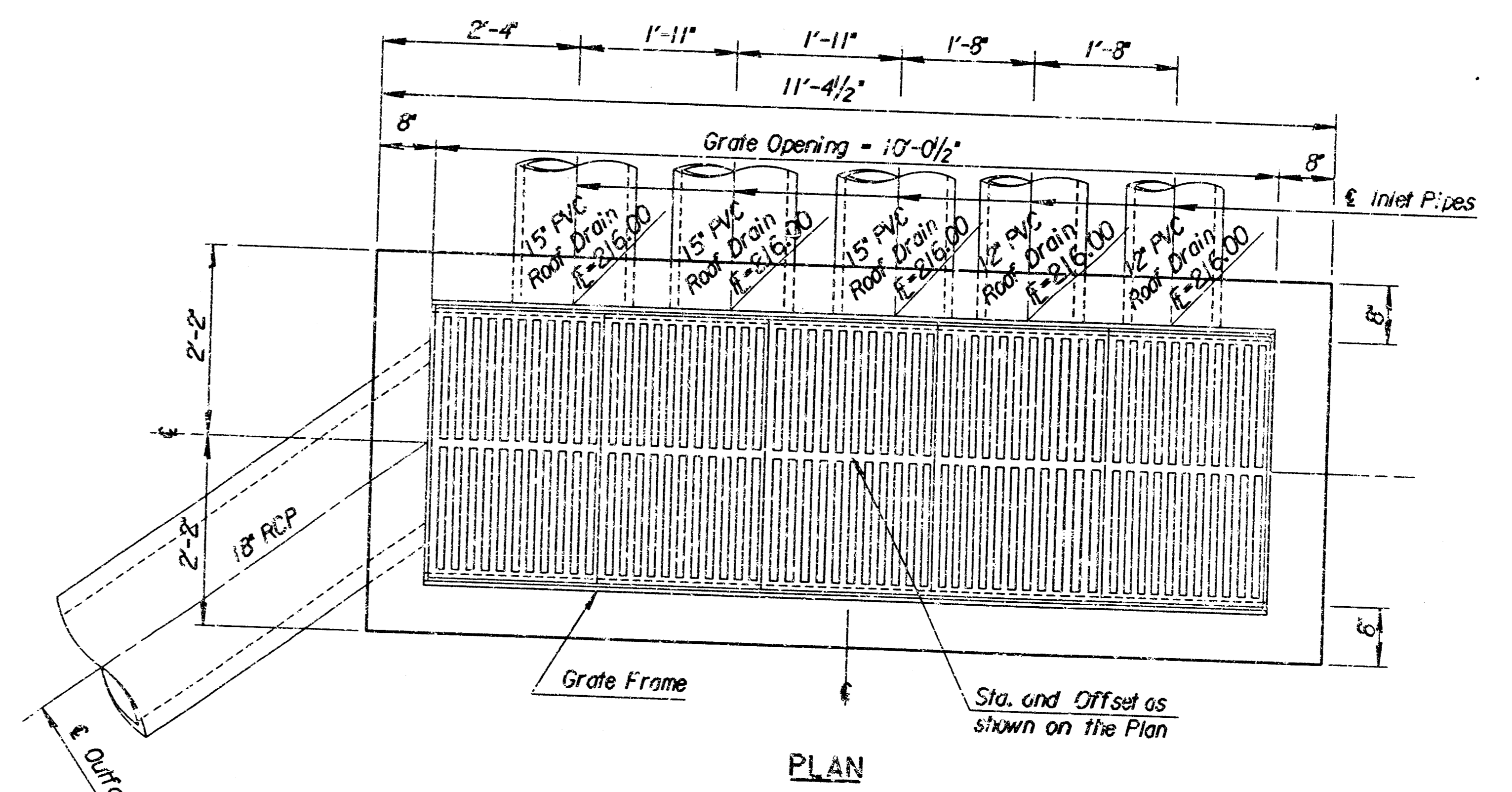
ISOMETRIC VIEW



TYPICAL TRENCH SECTION

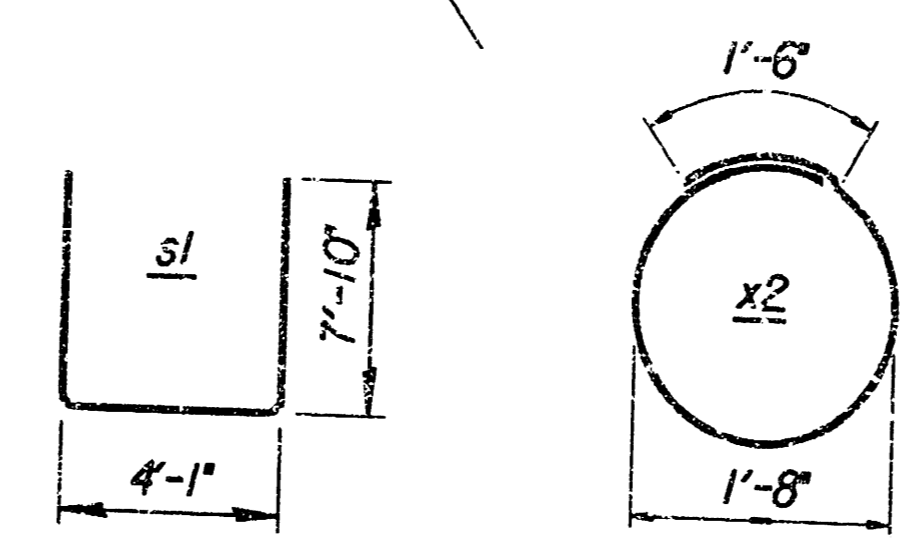


SECTION AT TRENCH INLET



PLAN

REINFORCING												BILL OF MATERIALS			
sl		h1**		h2**		vl**		x1		x2		Conc.	Reinf.	Exc.	Cast Iron
Size & Spa.	No.	Length	Size & Spa.	No.	Length	Size & Spa.	No.	Length	Size & Spa.	No.	Length	(Cu. Yds.)	(Lbs.)	(Cu. Yds.)	(Lbs.)
*4@ 9'	14	19'-9"	*4@ 9'	27	11'-1"	*4@ 9'	22	4'-1"	*4@ 9'	10	7'-11"	8.1	542	39.1	1,300



CENTRAL CHRISTIAN CHURCH

SWS LINE NO. 1

SPECIAL CATCH BASIN

C.O.W. FROM PROJ. NO. 824PPS

PROFESSIONAL ENGINEERING CONSULTANTS, P.A.

ENGINEERS
WICHITA, KANSAS

Designed by: RAS
Checked by: RAS

Drawn by: RAS
Date: SEPT., 1998
Job No.: 9858

80 10 50 41

1:998/98583/renchin.dgn
date plotted: 9-8-98
designed by: RAS