

GENERAL NOTES

1. THE CONTRACTOR SHALL BE RESPONSIBLE FOR PRESERVING PROPERTY IRONS. THE CONTRACTOR WILL BE REQUIRED TO RE-ESTABLISH ANY PROPERTY IRONS WHICH ARE DAMAGED OR DESTROYED BY HIS CONSTRUCTION OPERATIONS. SUCH IRONS SHALL BE RE-ESTABLISHED BY A LICENSED LAND SURVEYOR IN ACCORDANCE WITH STATE LAWS.
2. EXISTING UTILITIES AND THEIR LOCATIONS, AS SHOWN ON THE PLANS REPRESENT THE BEST INFORMATION OBTAINABLE FOR DESIGN. LOCATION INFORMATION HAS BEEN OBTAINED FROM THE VARIOUS UTILITY COMPANIES AND IS EITHER FROM COMPANY RECORD DRAWINGS OR COMPANY PROVIDED FIELD LOCATIONS. THE PLAN LOCATIONS SHOWN ARE NOT GUARANTEED. ADDITIONAL EXISTING UTILITIES MAY ALSO BE ENCOUNTERED.
3. CONTRACTOR WILL BE REQUIRED TO PROVIDE A MINIMUM ADVANCE NOTICE OF FORTY-EIGHT (48) HOURS TO UTILITY COMPANIES PRIOR TO STARTING ANY EXCAVATION AS FOLLOWS:

KANSAS ONE-CALL 1-800-344-7233
or 687-2470 (LOCAL WICHITA)

THE CONTRACTOR MUST NOTIFY THE FOLLOWING IN CASE OF AN EMERGENCY:

SOUTHWESTERN BELL TELEPHONE COMPANY 1-800-734-7590
CABLEVISION 263-2061
K&E (GAS & ELECTRIC) 383-8660
CITY OF WICHITA WATER & SEWER MAINTENANCE 258-4909
WILLIAMS NATURAL GAS 524-0491
OR 1-800-324-9695 (AFTER 4 p.m.)

4. RUBBLE FROM THE REMOVAL OF MISCELLANEOUS STRUCTURES AND EXCESS EXCAVATION WHICH IS TO BE WASTED SHALL BE DISPOSED OF ON SITES TO BE PROVIDED BY THE CONTRACTOR. THESE SITES SHALL BE APPROVED BY THE ENGINEER AS TO SUITABILITY, APPEARANCE AND SITE LOCATION. LOCATIONS THAT, IN THE OPINION OF THE ENGINEER, WILL LEAVE AN UNSIGHTLY APPEARANCE WILL NOT BE APPROVED. ALL DISPOSAL SITES MUST BE APPROVED BY THE KANSAS DEPARTMENT OF HEALTH AND ENVIRONMENT. MATERIAL EITHER STOCKPILED OR DISPOSED OF IN A FLOOD PLAIN WOULD REQUIRE A KANSAS STATE BOARD OF AGRICULTURE PERMIT. ANY MATERIAL DUMPED IN WATERS OF THE UNITED STATES OR WETLANDS IS SUBJECT TO U.S. CORPS OF ENGINEERS PERMITTING REGULATIONS. ANY MATERIAL BURIED OR STOCKPILED BEYOND APPROVED CONSTRUCTION LIMITS WOULD REQUIRE ADDITIONAL ARCHAEOLOGICAL INVESTIGATIONS UNLESS BURIED IN A PREVIOUSLY APPROVED BORROW LOCATION.
5. TREES AND SHRUBS IN PUBLIC RIGHT-OF-WAY WHICH ARE IN DIRECT CONFLICT WITH PROPOSED NEW CONSTRUCTION SHALL BE REMOVED BY THE CONTRACTOR WITH THE ENGINEER'S APPROVAL. TREES AND SHRUBS WHICH ARE NOT IN DIRECT CONFLICT WITH PROPOSED NEW CONSTRUCTION SHALL BE SAVED AND PROTECTED FROM DAMAGE.
6. ALL DISTURBED AREAS TO BE SEEDED WITH RYE GRASS AT A RATE OF 200LBS./ ACRE WITHIN 10 DAYS OF CONSTRUCTION. CONTRACTOR TO PREPARE GROUND PER CITY SPEC.

APPROVED AS NOTED
BY CITY ENGINEER OF WICHITA

STORM SEWERS

NOTE TO CONTRACTOR

INSPECTION AND TESTING FOR THIS PROJECT IS TO BE PROVIDED BY A LICENSED CONSULTING ENGINEERING FIRM UNDER CONTRACT WITH THE OWNER/DEVELOPER. SAID INSPECTION TO BE IN ACCORDANCE WITH THE CITY OF WICHITA STANDARD CONSTRUCTION ENGINEERING PRACTICES AND CERTIFIED BY A LICENSED PROFESSIONAL ENGINEER. NO WORK SHALL BE PERFORMED IN DEDICATED EASEMENTS OR THE PUBLIC RIGHT-OF-WAY BY THE CONTRACTOR WITHOUT SUCH INSPECTION NOR SHALL ANY WORK BE COMMENCED IN DEDICATED EASEMENTS OR PUBLIC RIGHT-OF-WAY WITHOUT WRITTEN AUTHORIZATION BY THE CITY ENGINEER.

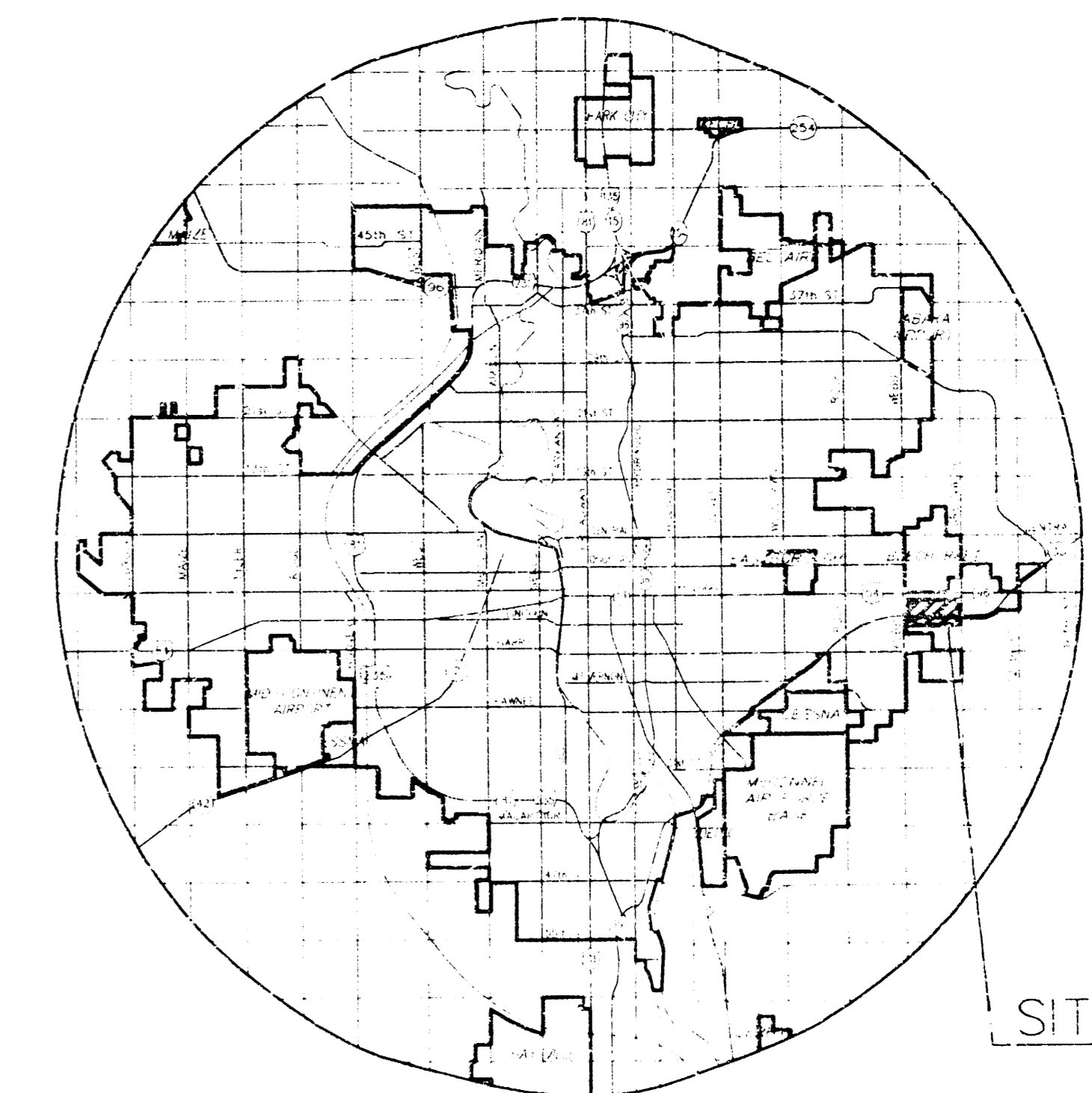
PRIVATE STORM WATER SEWER PLANS TO SERVE

**E.M. STEVENS
4TH ADDITION
TRACTOR SUPPLY
PROJECT NO. 903PPS**

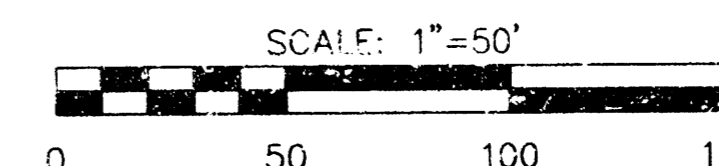
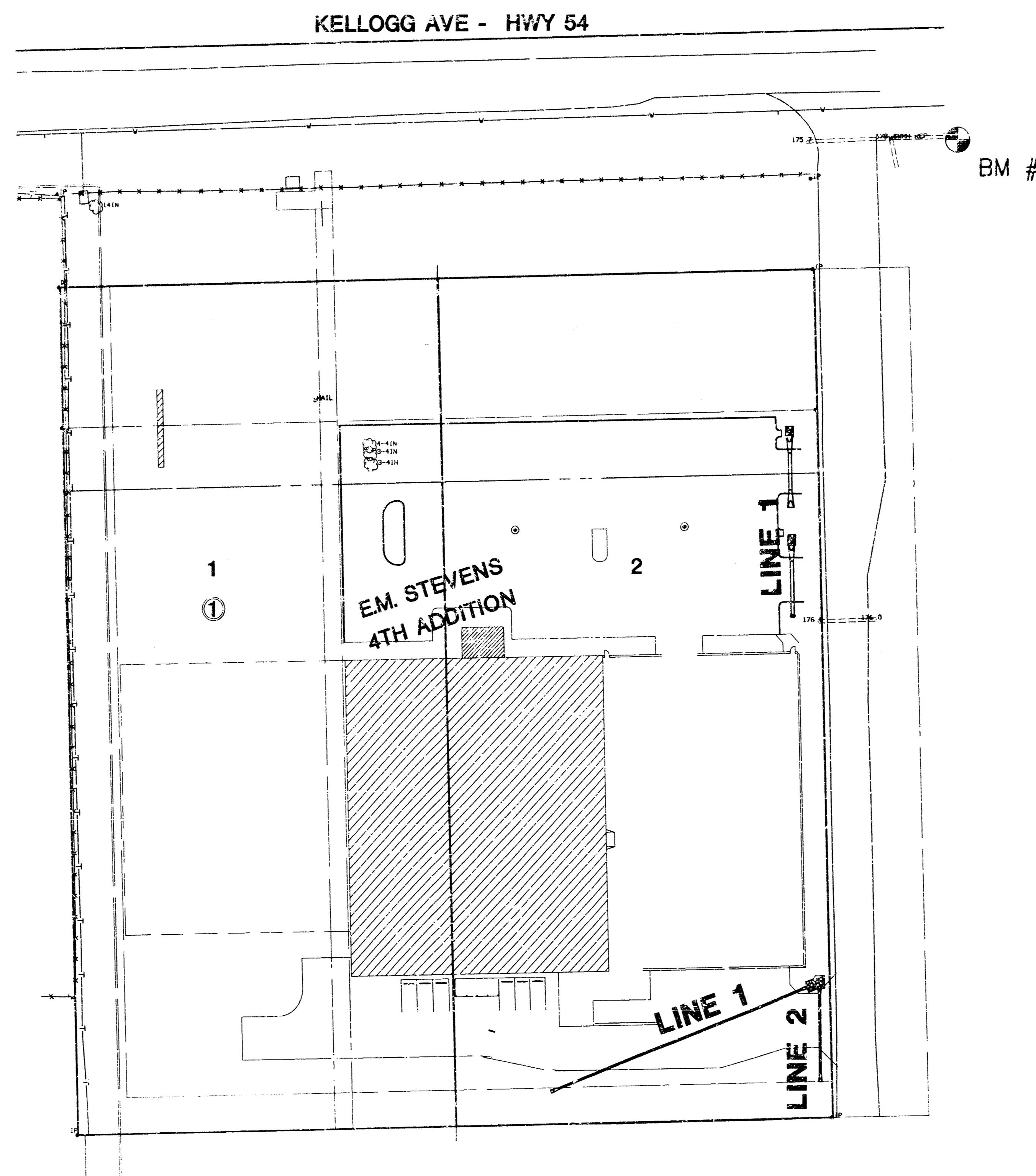
CITY OF WICHITA, KANSAS

MICHAEL E. LINDEBAK, CITY ENGINEER

INDEX CODE 607861



LOCATION MAP



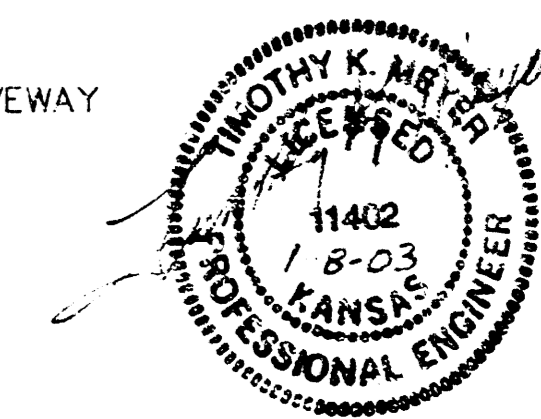
INDEX TO DRAWINGS

SHEET NO.	DESCRIPTION
1	TITLE SHEET
2-4	LINE 1 PLAN/PROFILE
5	LINE 2 PLAN/PROFILE
6	FINAL PLAT

BENCHMARK

BM #1 CUT E. END RCP UNDER DRIVEWAY
TO RAYTHEON AIRCRAFT
ELEV. = 176.92

Booked E-5
8/23/03
RDL



MID-KANSAS ENGINEERING
CONSULTANTS, INC.
411 N. WEBB ROAD
WICHITA, KS. 67206
316-684-9600

**E.M. STEVENS 4TH ADDITION
TRACTOR SUPPLY, LOTS 1 & 2, BLK. 1**
PROJECT NAME

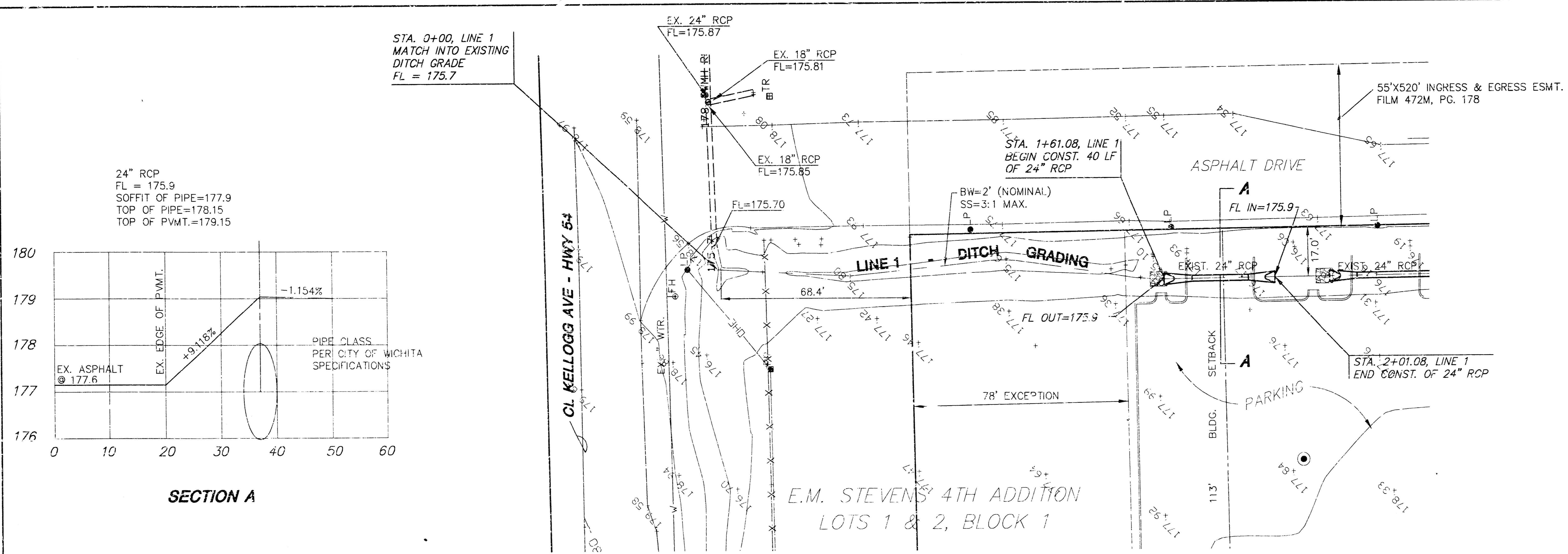
TITLE SHEET
SHEET TITLE

DESIGN BY: TKM	DRAWN BY: DAC	CHECKED BY: TKM
DATE: MAY 1999	JOB NO.: 98135	SHEET OF: 1 / 6

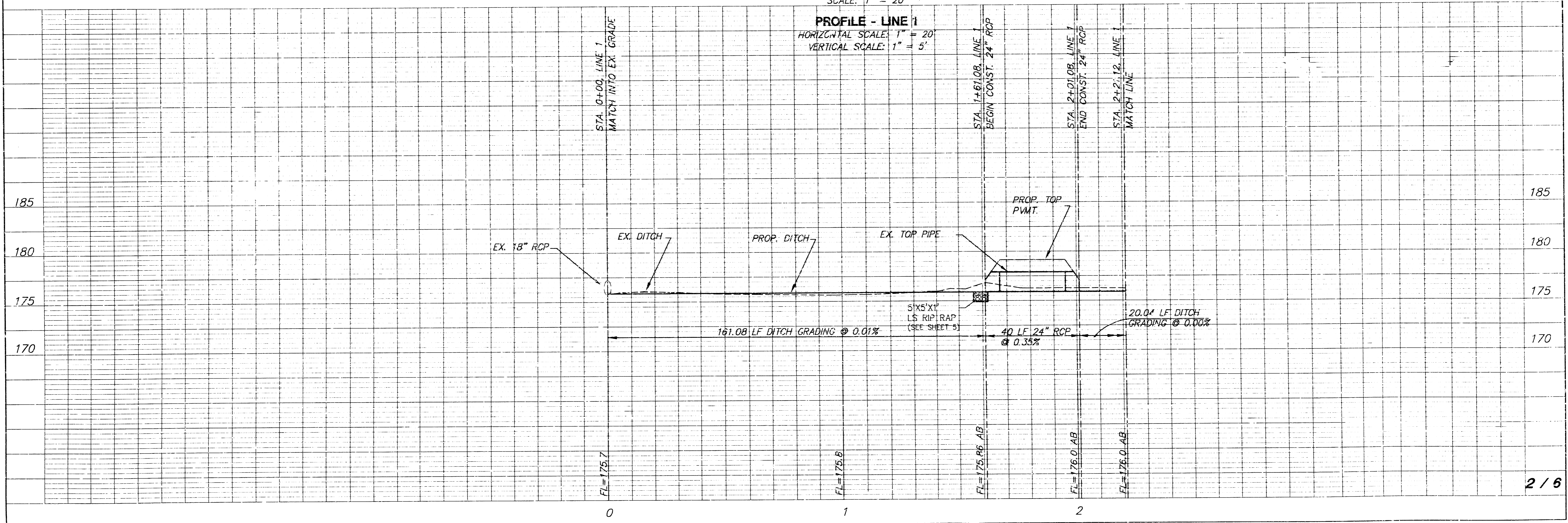
**TRACTOR SUPPLY COMPANY
STORM SEWER
LINE 1**



SCALE: 1"=20'
0 10 20

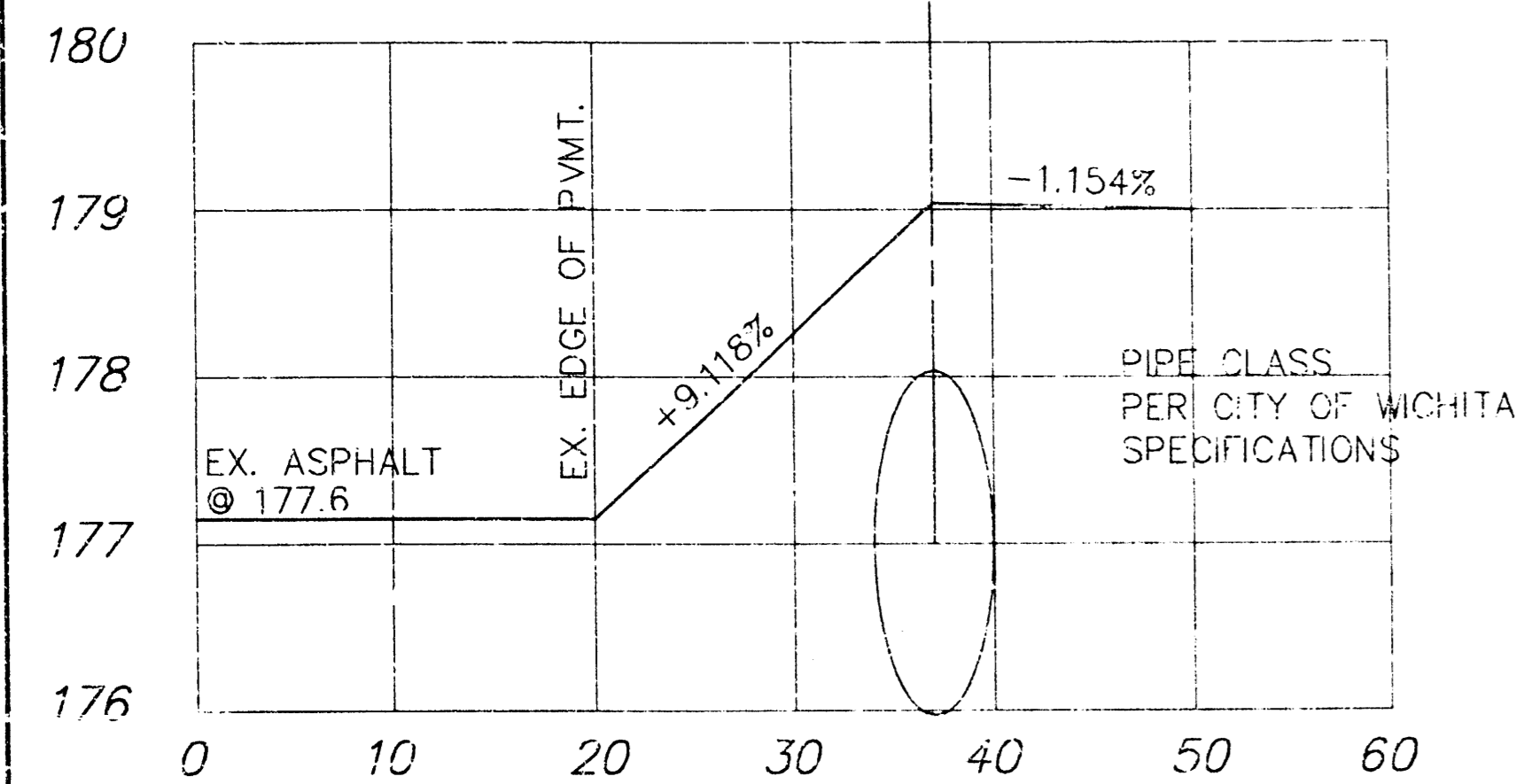


PLAN - LINE 1
SCALE: 1" = 20'



PROFILE - LINE 1
HORIZONTAL SCALE: 1" = 20'
VERTICAL SCALE: 1" = 5'

24" RCP
FL = 175.9
SOFFIT OF PIPE=177.9
TOP OF PIPE=178.15
TOP OF PVMT.=179.15



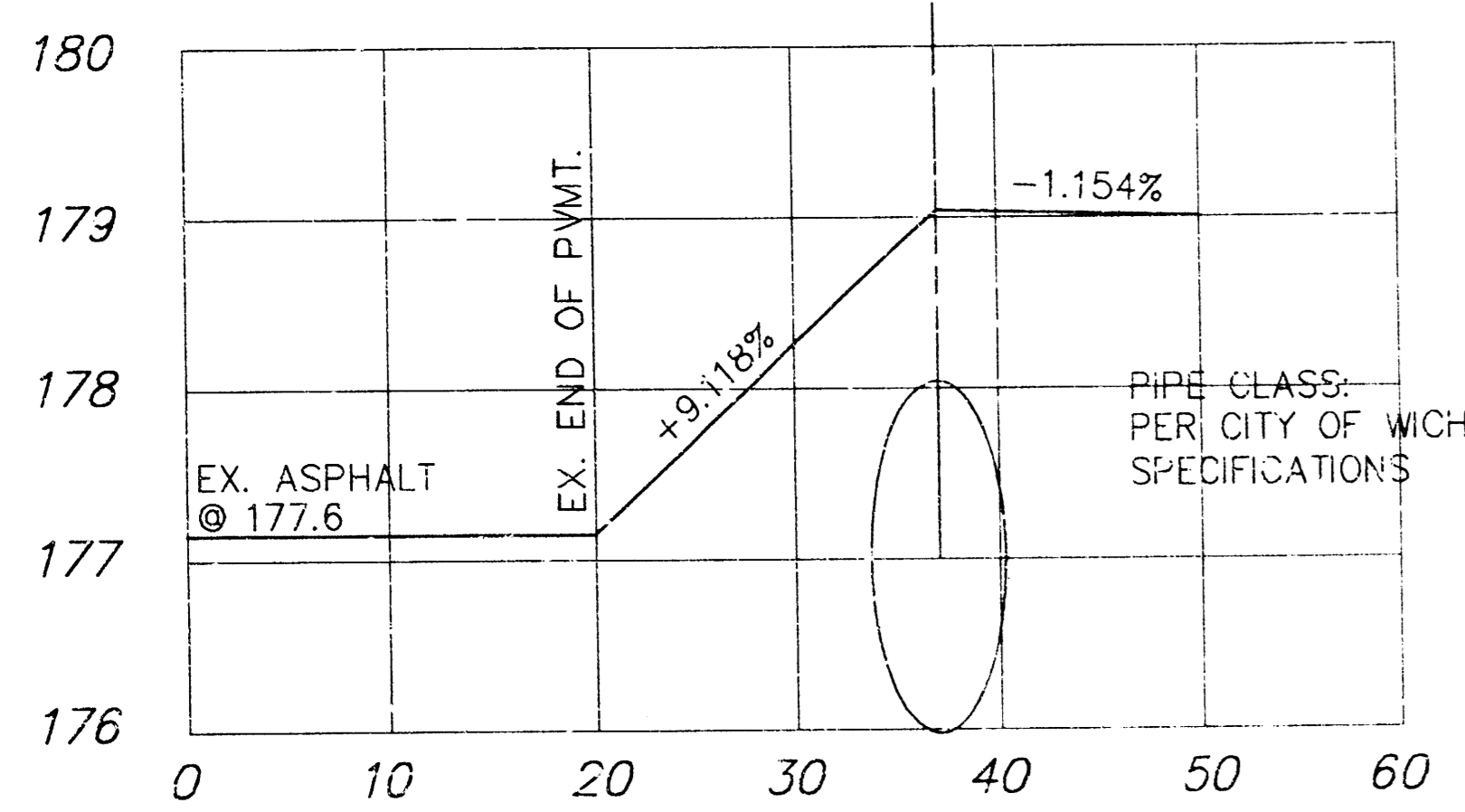
SECTION A

**TRACTOR SUPPLY COMPANY
STORM SEWER
LINE 1 (CONTD)**

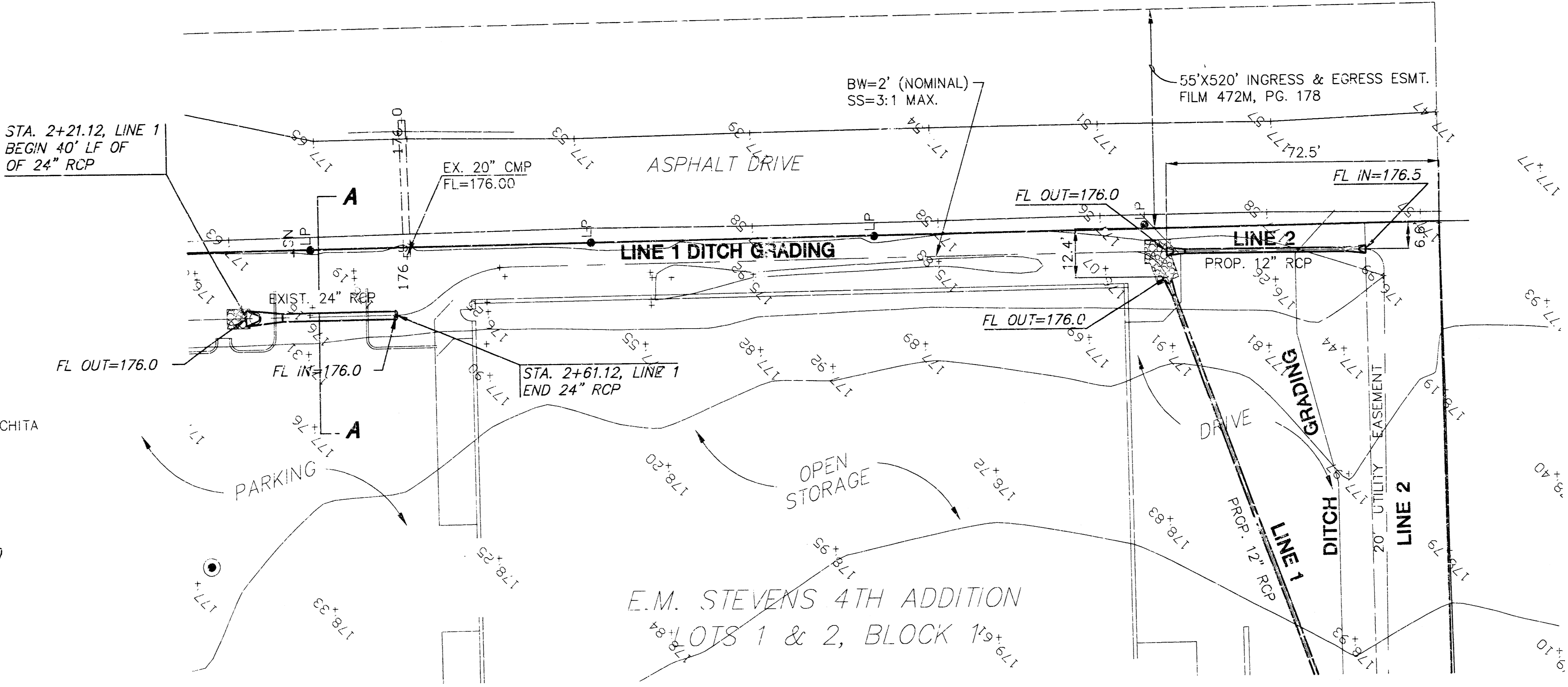


SCALE: 1"=20'
20 10 0 20

24" RCP
FL = 176.0
SOFFIT OF PIPE=178.0
TOP OF PIPE=178.24
TOP OF PVMT.=179.24

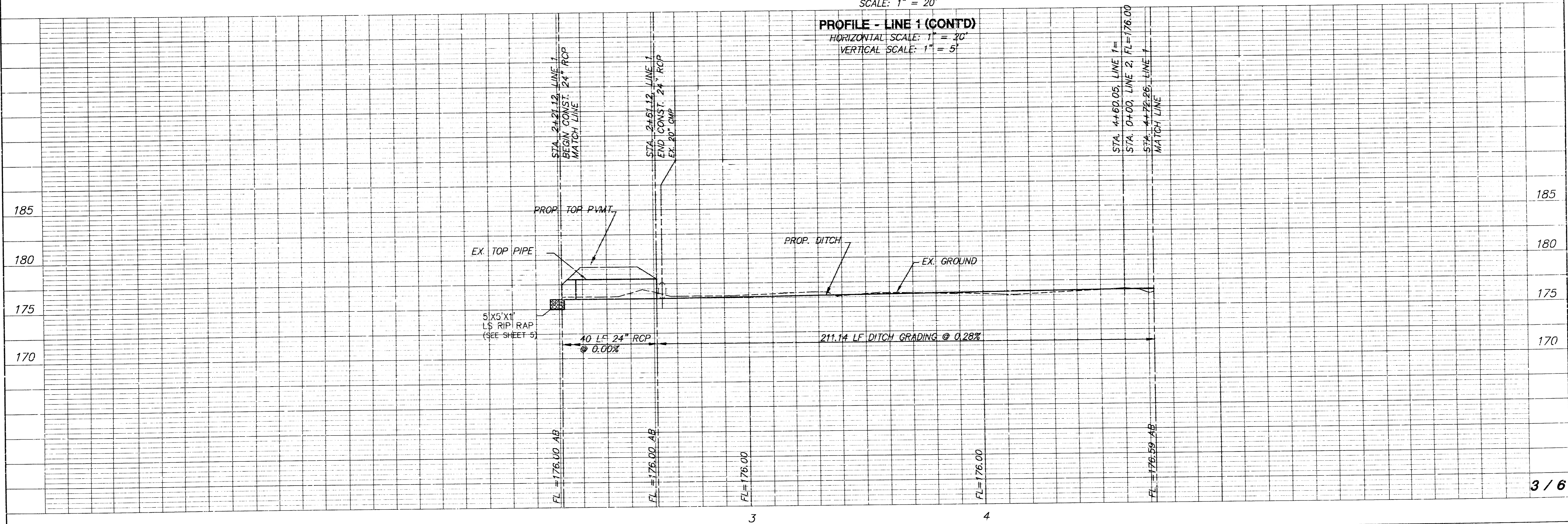


SECTION A

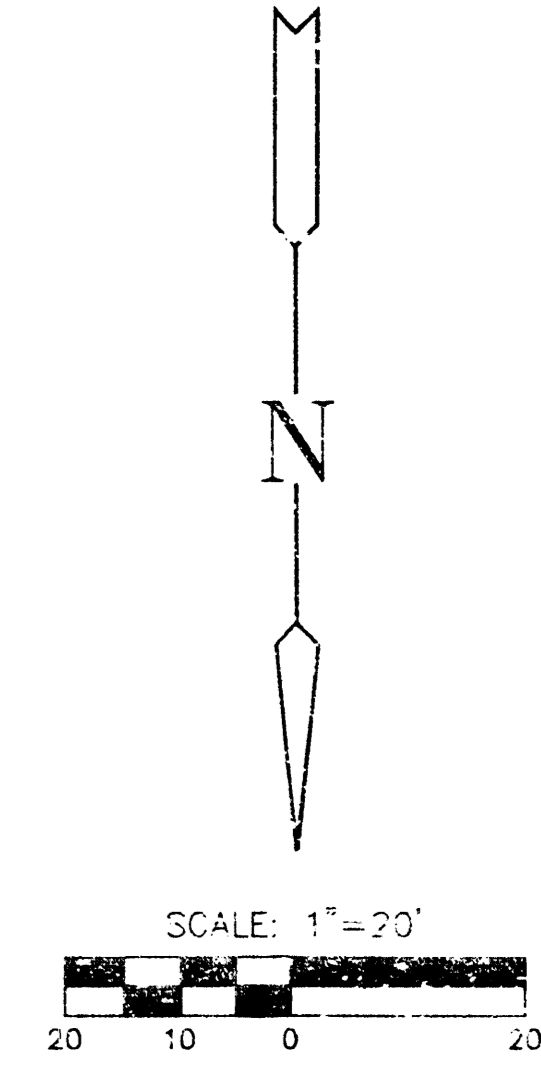
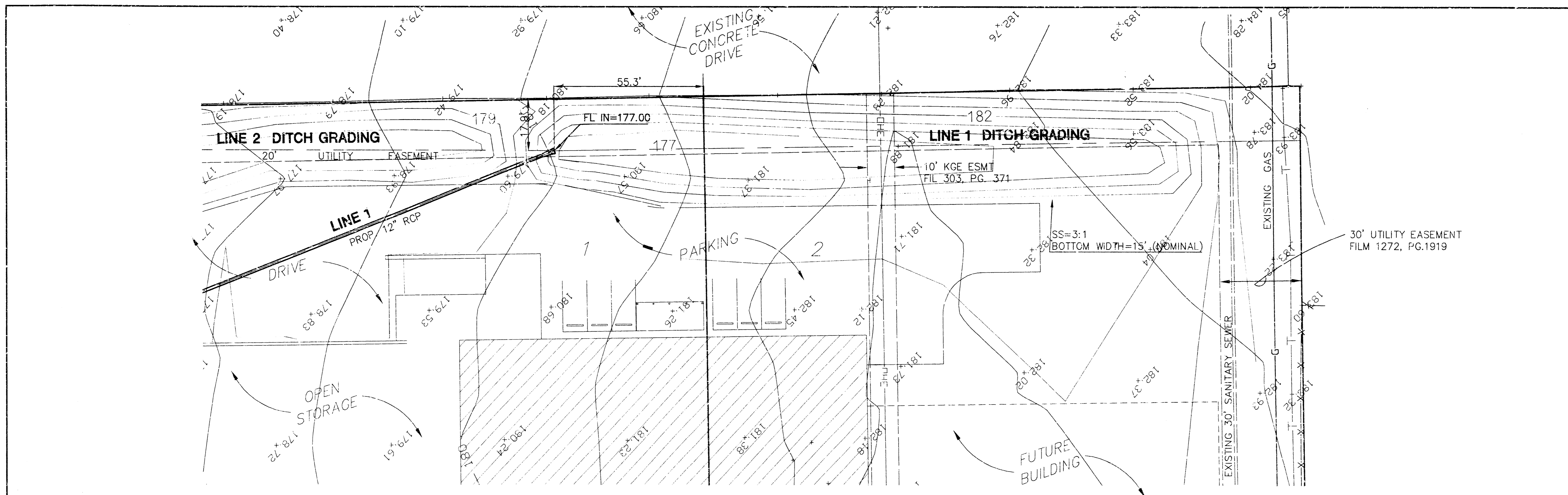


PLAN - LINE 1 (CONTD)
SCALE: 1" = 20'

PROFILE - LINE 1 (CONTD)
HORIZONTAL SCALE: 1" = 20'
VERTICAL SCALE: 1" = 5'

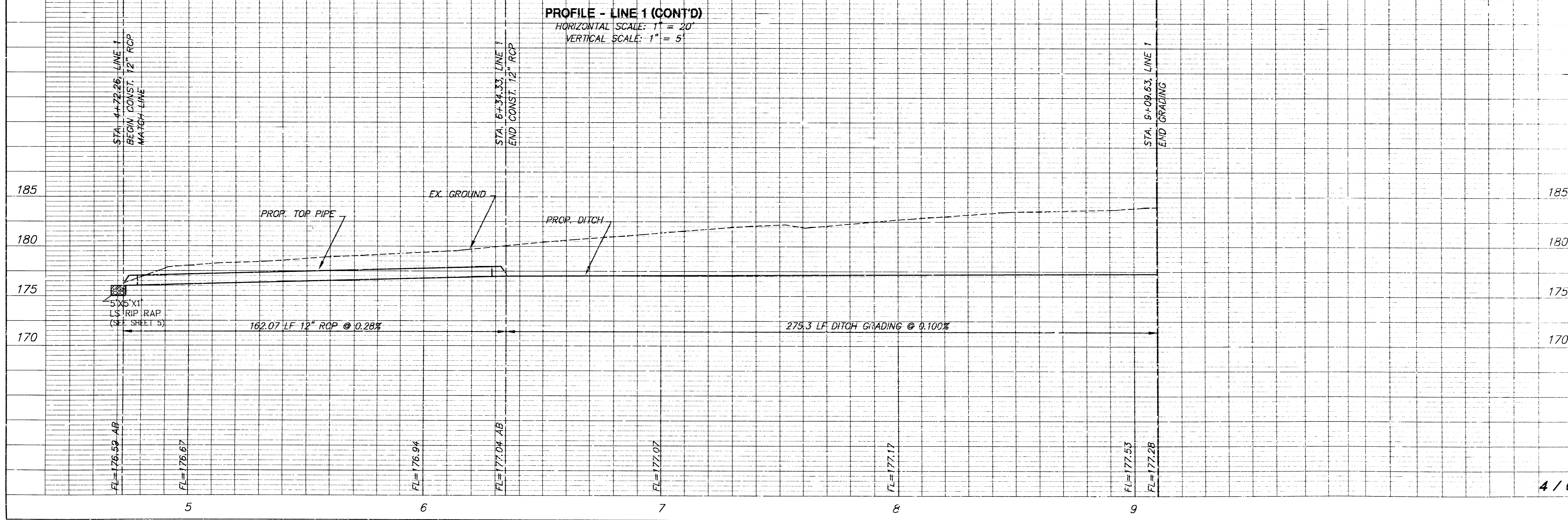


**TRACTOR SUPPLY COMPANY
STORM SEWER
LINE 1 - CONTD**



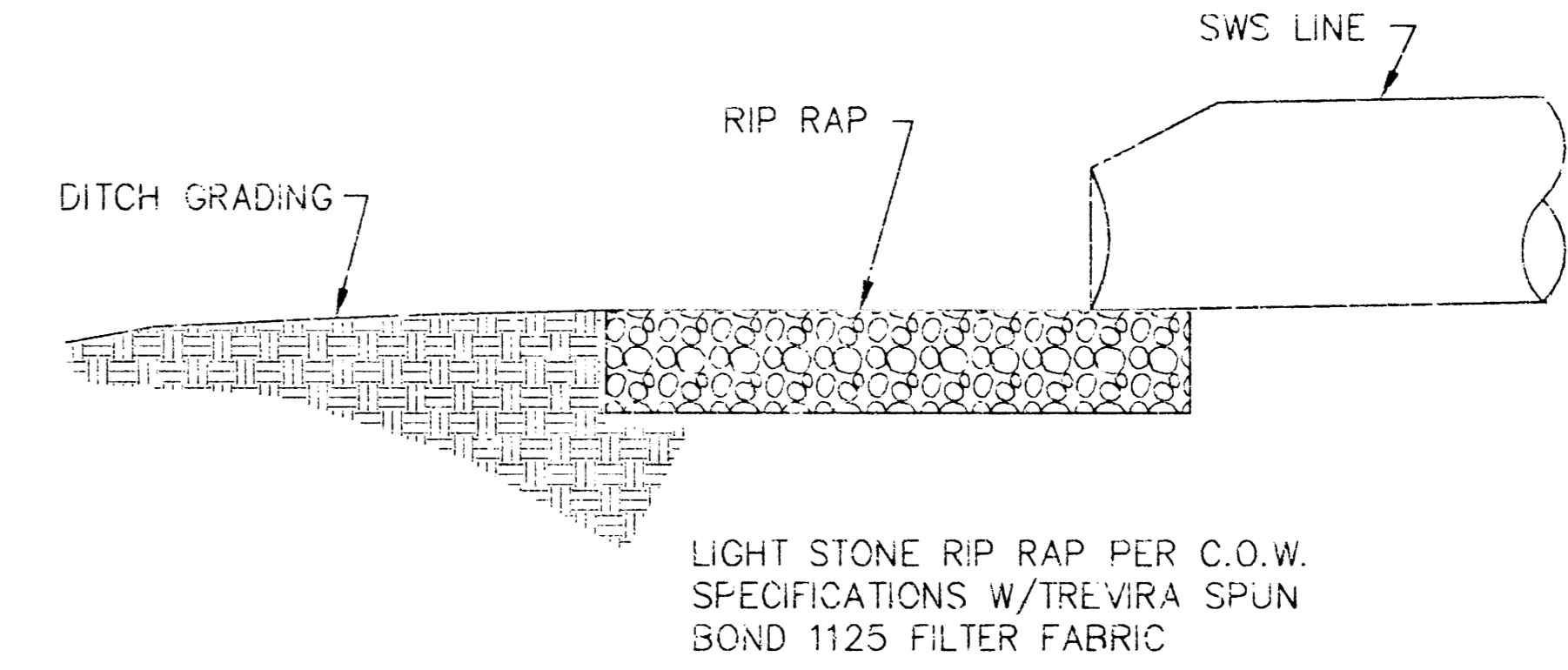
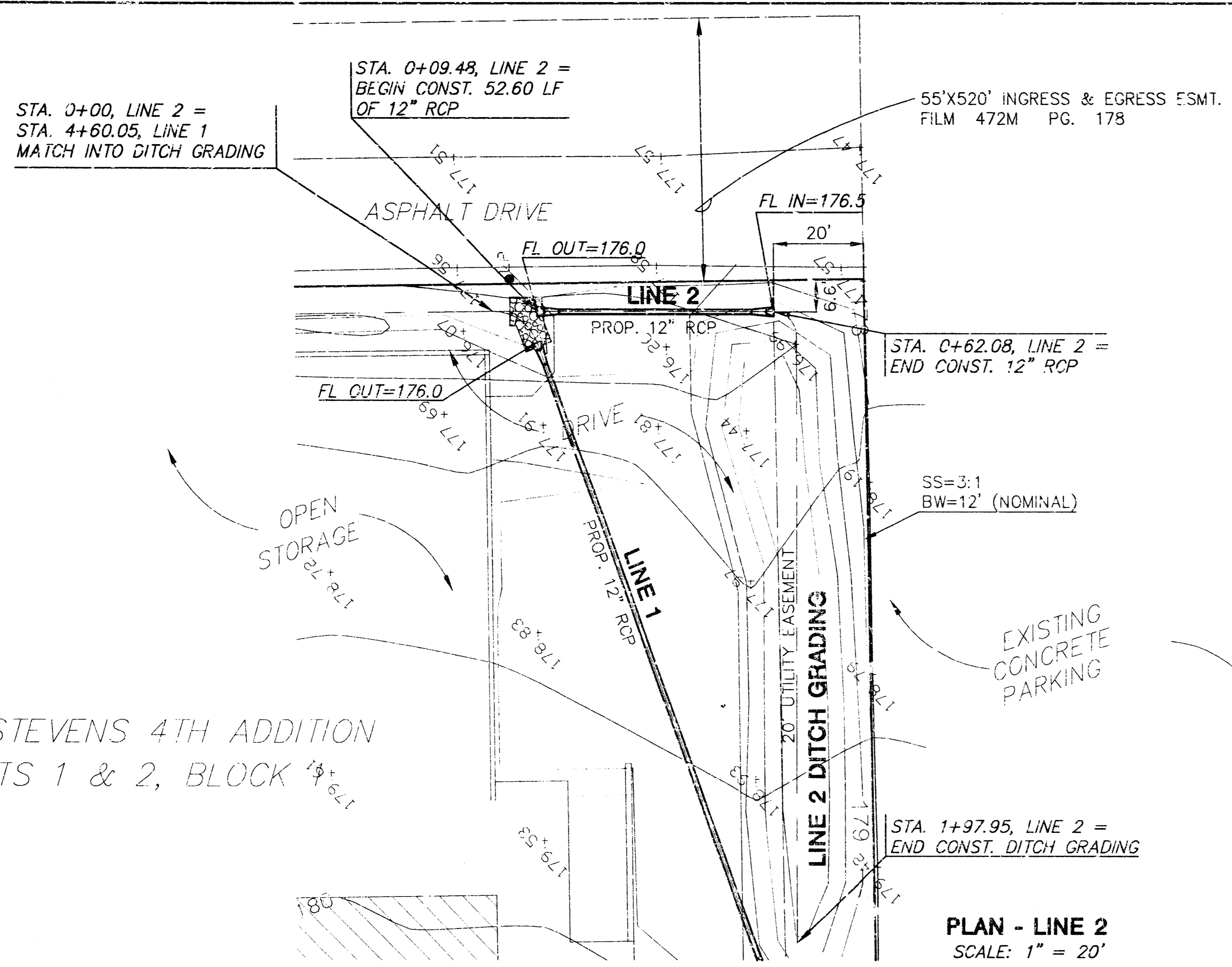
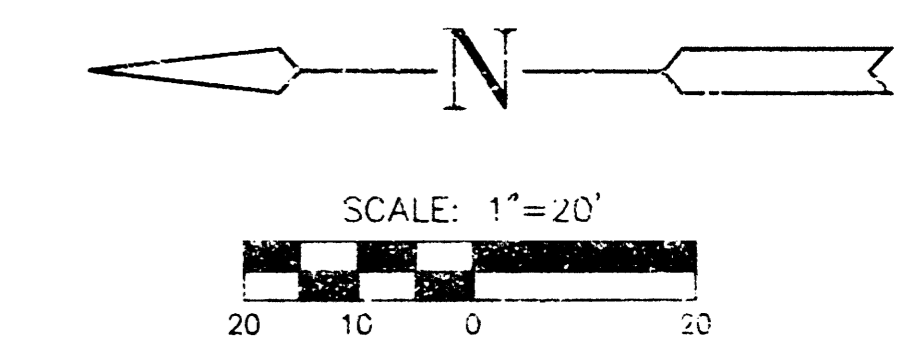
*E.M. STEVENS 4TH ADDITION
LOTS 1 & 2 , BLOCK 1*

PLAN - LINE 1 (CONTD)
SCALE: 1" = 20'



PROFILE - LINE 1 (CONTD)
HORIZONTAL SCALE: 1" = 20'
VERTICAL SCALE: 1" = 5'

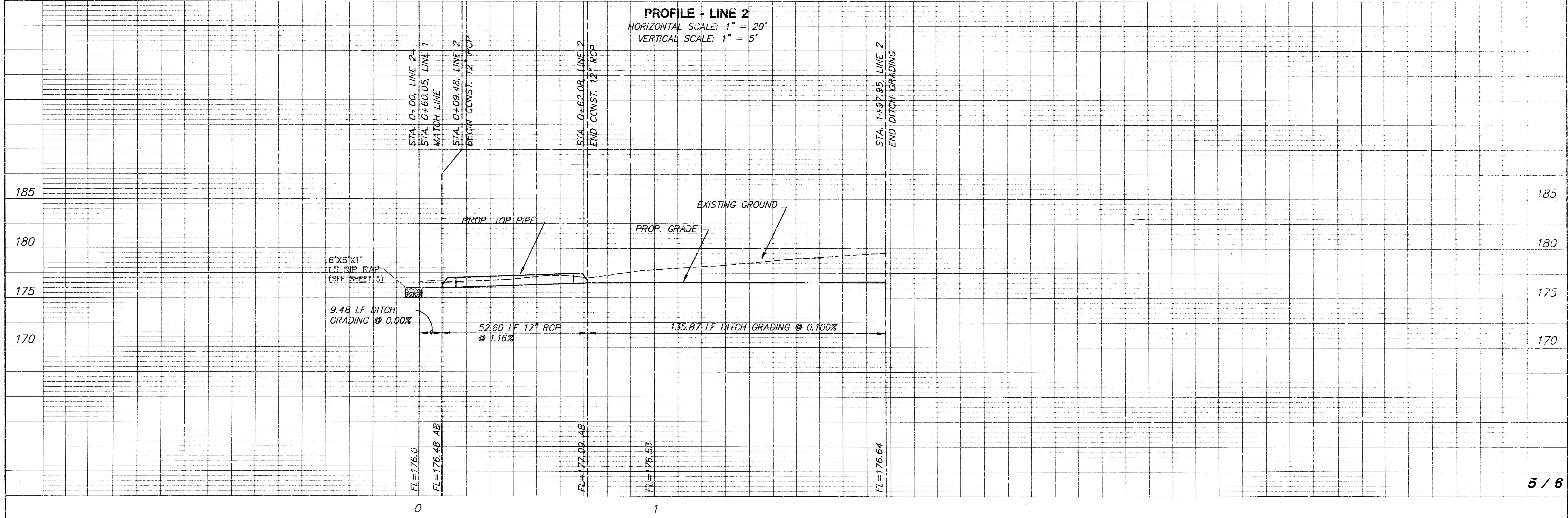
**TRACTOR SUPPLY COMPANY
STORM SEWER
LINE 2**



RIP RAP DETAIL
(NOT TO SCALE)

E.M. STEVENS 4TH ADDITION
LOTS 1 & 2, BLOCK

PLAN - LINE 2
SCALE: 1" = 20'



PROFILE - LINE 2
HORIZONTAL SCALE: 1" = 20'
VERTICAL SCALE: 1" = 5'

