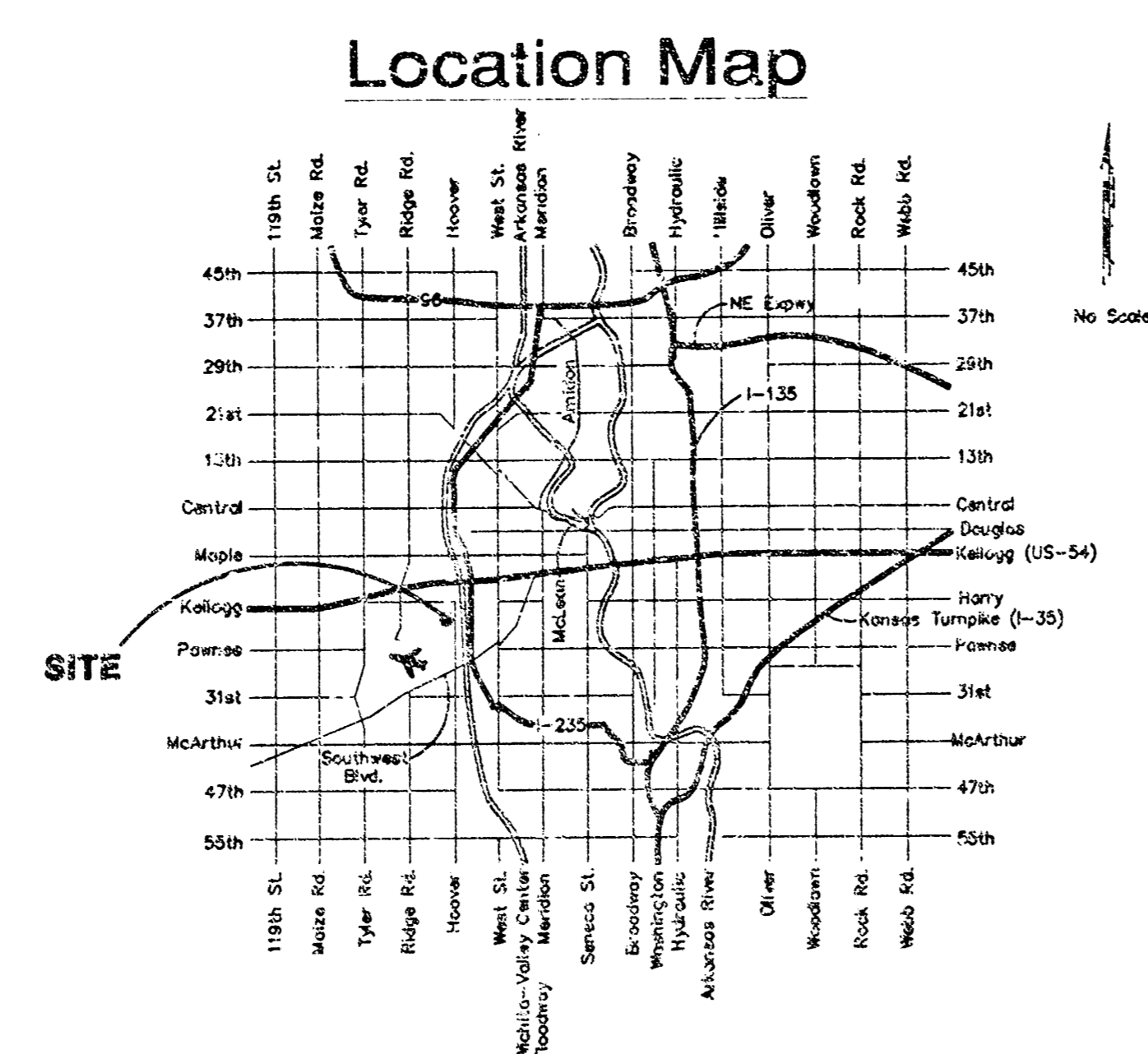


Benchmark:
 60d Nail Located in Power Pole Located South Side Hoover Court.
 Elev. = 111.86 City Datum

Legal Description
 Lot 8, Airport Industrial Park, Wichita, Sedgewick County, Kansas.

Index

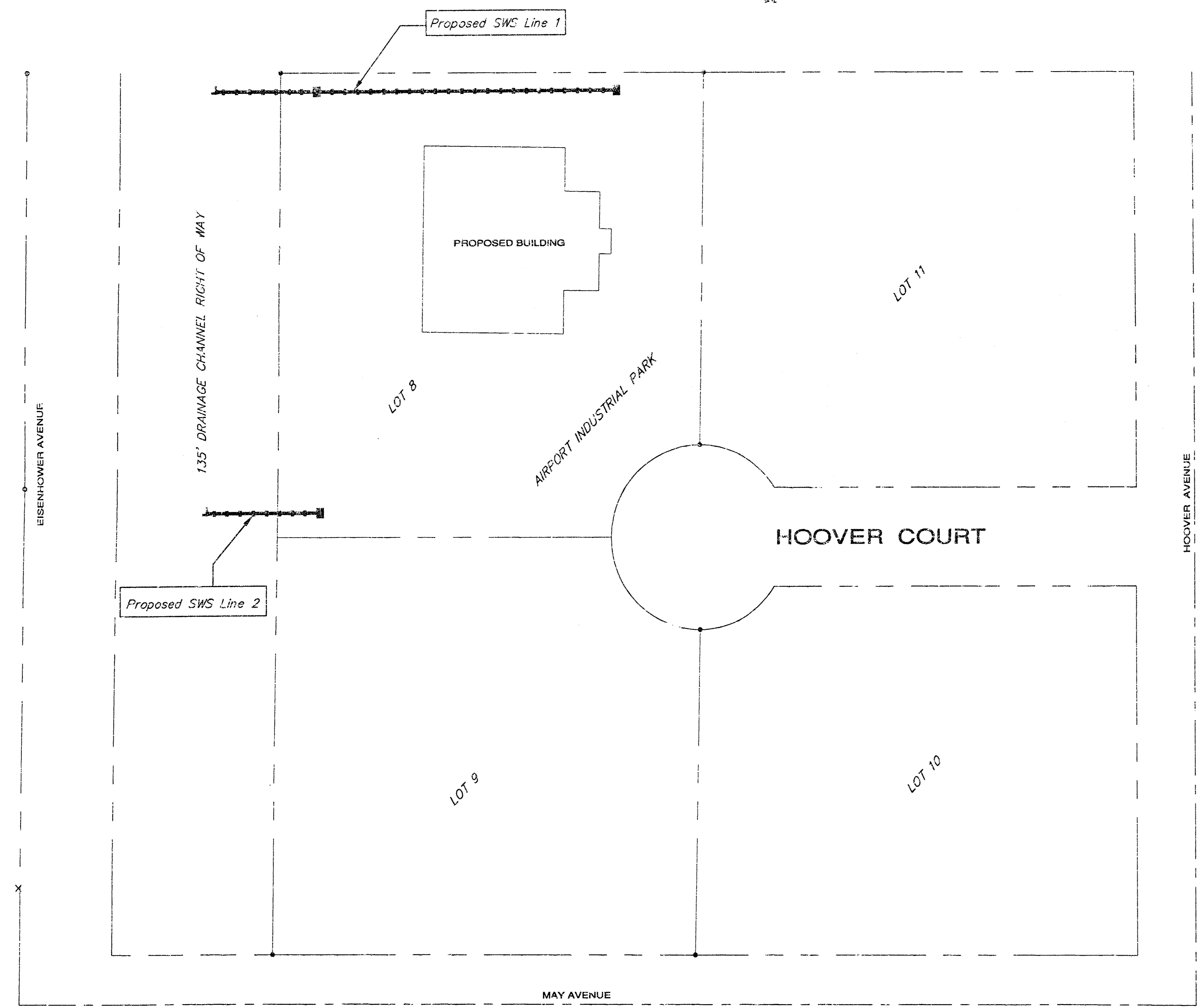
Cover Sheet	1
Plan/Profile Sheet Line 1	2
Plan/Profile Sheet Line 2	3
Drop Inlet & Sediment Barrier Details	4
Copy Of Plat	5



STORM WATER SEWER TO SERVE AIRPORT INDUSTRIAL PARK

LOT 8
 Private Project Number
975 PPS (607861)

CITY OF WICHITA, KANSAS
 Michael E. Lindebak, P.E. City Engineer
 February 2000



General Notes:

- Contractor will be required to provide notice to utility companies a minimum of forty-eight (48) hours prior to any excavation, as follows:

Kansas One-Call	687-2470
Cablevision	262-0661
or	263-2061
Kansas Gas Service	383-8600
KGE	383-8650
Peoples Gas Company	942-8811
Southwestern Bell Telephone Company	800-344-7233
City of Wichita Water Department	268-4908
City of Wichita Sewer Maintenance	268-4071
- Underground utility service lines and overhead utility pole lines are to be adjusted as necessary by others prior to construction unless the plans specifically call for their adjustment by the Contractor or unless the plans specifically identify a utility to be adjusted by its owner during construction. Existing utilities and their location, as shown on the plans, represent the best information obtainable for design and shall be field verified by the Contractor. The Contractor will be required to work around existing utilities within the right-of-way which do not conflict with proposed construction.
- Contractor shall not start work on the project until the Project Inspector is assigned to the project and is present on the site. Any work done without inspection will be required to be uncovered for inspection.
- All areas disturbed by construction operations shall be seeded with rye grass at a rate of 6 lbs. per 1000 sq. feet or as per city specs. Contractor to prepare ground to city specifications.
- Trees and shrubs which are in direct conflict with proposed new construction shall be removed by the Contractor with the Engineer's approval. Trees and shrubs which are not in direct conflict with proposed new construction shall be saved and protected from damage.
- Rubble from the removal of miscellaneous structures and excess excavation which is to be wasted shall be disposed of on sites to be provided by the Contractor. These sites shall be approved by the Engineer as to suitability, appearance and site location. Locations that, in the opinion of the Engineer, will leave an unsightly appearance will not be approved. All disposal sites must be approved by the Kansas Department of Health and Environment. Material either stockpiled or disposed of in a flood plain would require a Kansas State Board of Agriculture permit. Any material dumped in waters of the United States or wetlands is subject to U.S. Corps. of Engineers permitting regulations. Any material buried or stockpiled beyond approved construction limits would require additional archaeological investigations unless buried in a previously approved borrow location.

APPROVED AS NOTED
 BY CITY ENGINEER OF WICHITA

Storm Sewers VRH 2/28/00

NOTE TO CONTRACTORS

Installation, inspection and testing for this project is to be provided by a Licensed Consulting Engineering Firm under contract with the Owner/Developer. Said inspection to be in accordance with the City of Wichita standard construction engineering practices and certified by a Licensed Professional Engineer. No work shall be performed in dedicated easements or public right-of-way by the Contractor without such inspection nor shall any work be commenced without written authorization by the City Engineer. All Construction and Materials shall comply with the City of Wichita Specifications and Standards (on file and available in the City Engineer's Office).

SCALE:
 1" = 60'



16-4-2-13

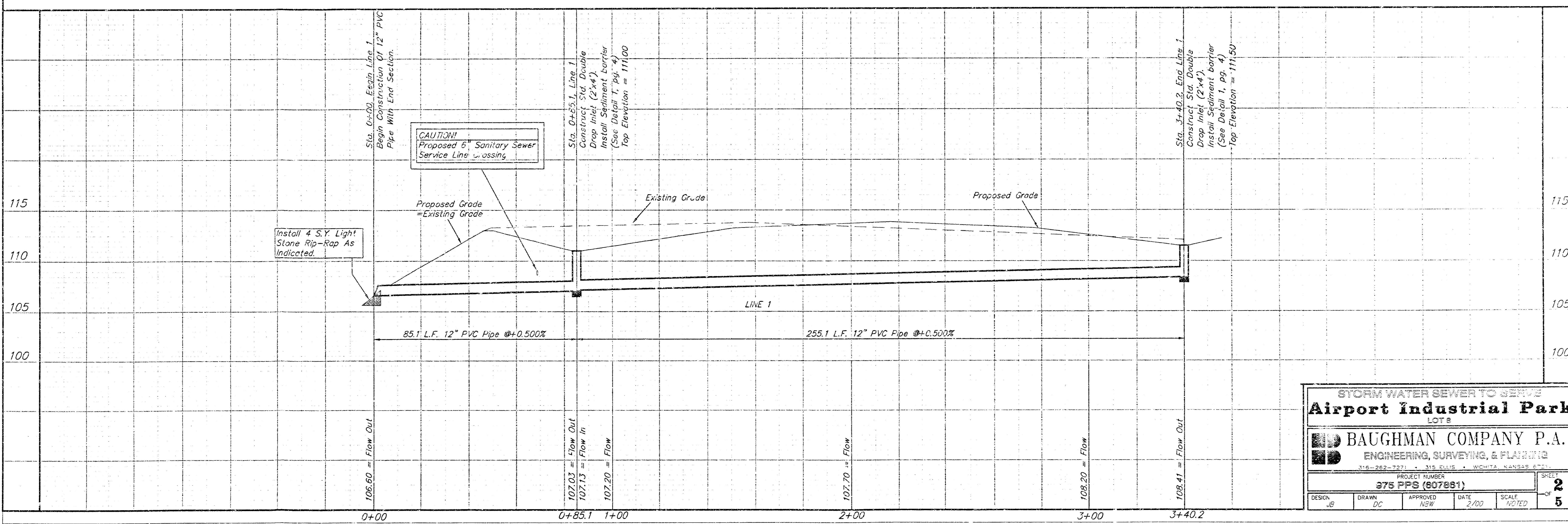
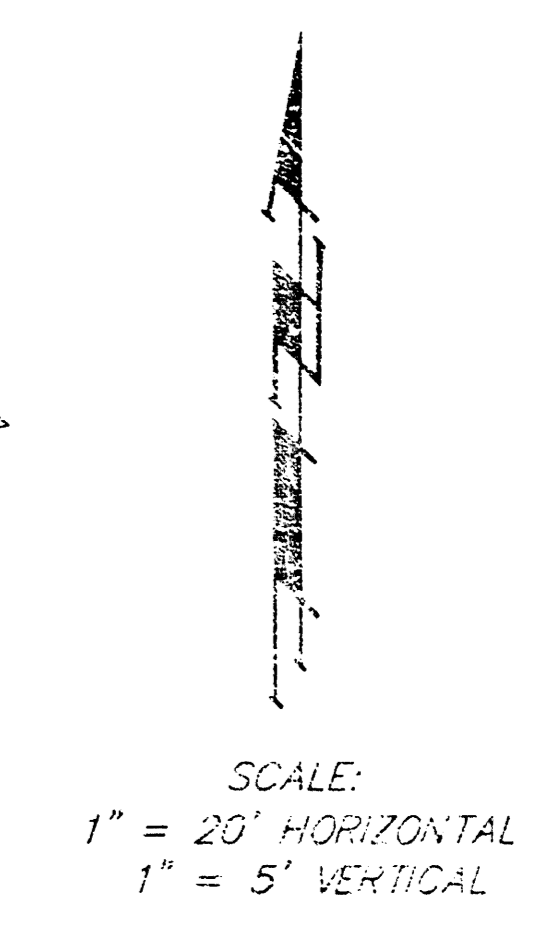
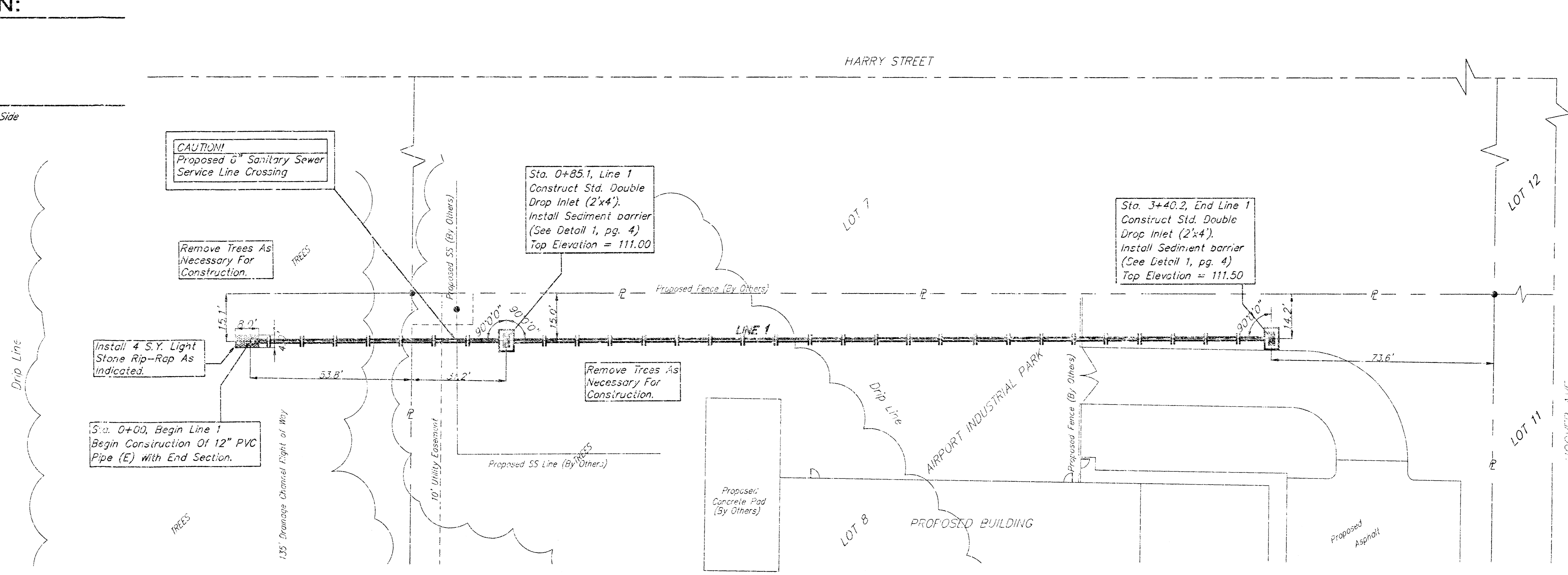
BAUGHMAN COMPANY P. A.
 ENGINEERING, SURVEYING, & PLANNING
 316-262-7211 • 316-262-7212 • WICHITA, KANSAS 67201

LEGAL DESCRIPTION:

Lot 8, Airport Industrial Park, Wichita, Sedgewick County, Kansas.

BENCHMARK:

60d Nail Located in Power Pole Located South Side Hoover Court.
Elev. = 111.86 City Datum



STORM WATER SEWER TO SERVE
Airport Industrial Park
LOT 8

BAUGHMAN COMPANY P.A.
ENGINEERING, SURVEYING, & PLANNING
316-262-2771 • 315 ELLIS • WICHITA, KANSAS 67201

PROJECT NUMBER
375 PFS (607881)

DESIGN JB	DRAWN DC	APPROVED NEW	DATE 2/00	SCALE NOTED	SHEET 2
					OF 5

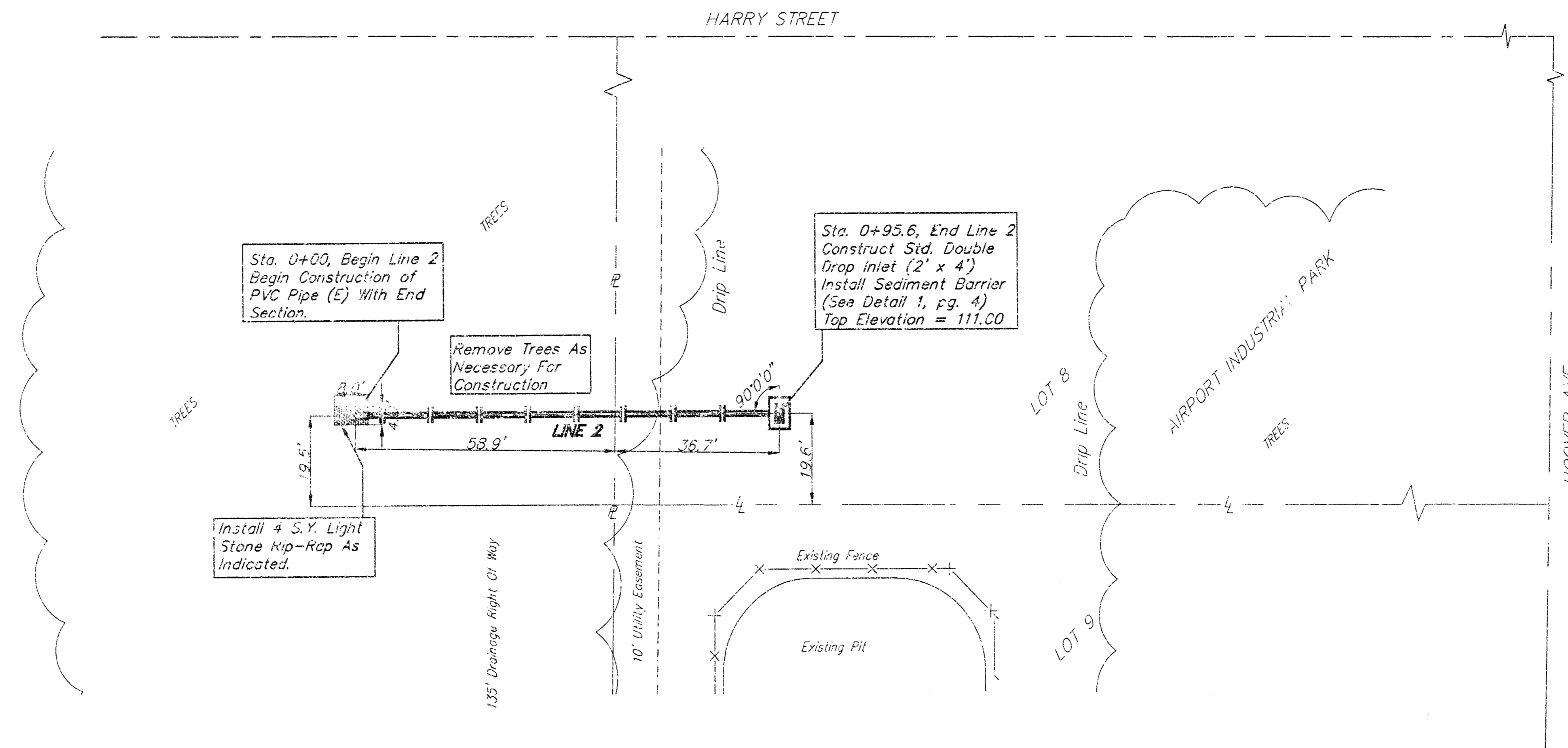
99-07-4704
Dwn (SWS)

LEGAL DESCRIPTION:

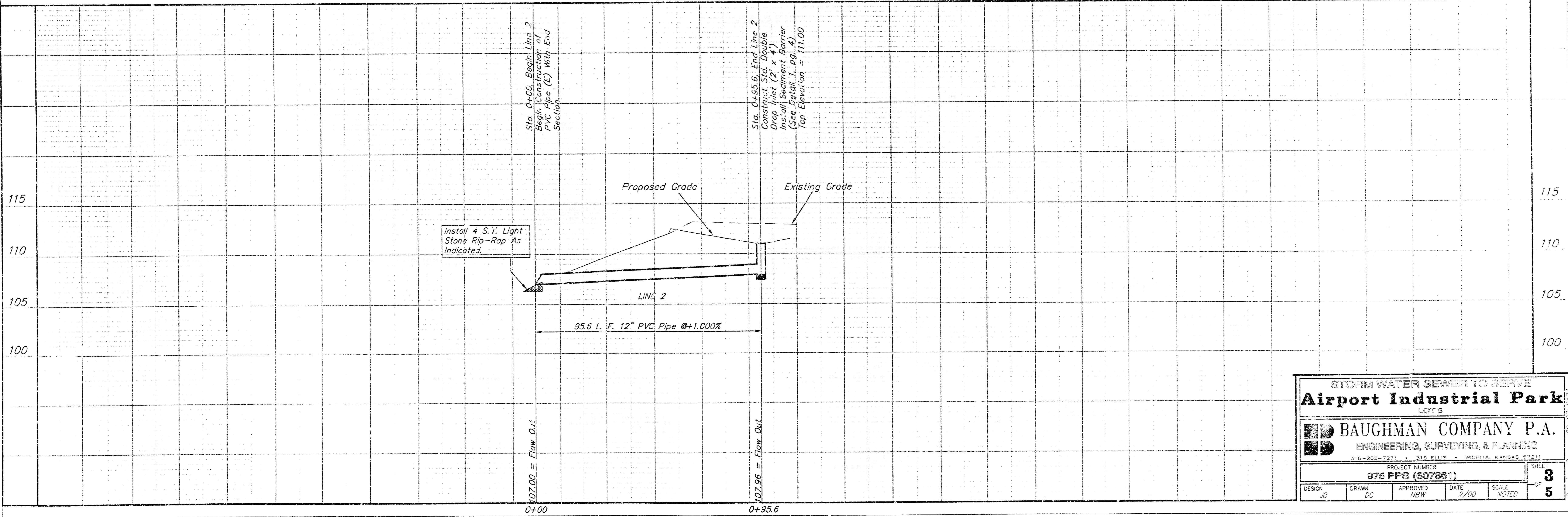
Lot 8, Airport Industrial Park, Wichita, Sedgwick County, Kansas

BENCHMARK:

60d Nail Located in Power Pole Located South Side Hoover Court.
Elev. = 111.86 City Datum



SCALE:
1" = 20' HORIZONTAL
1" = 5' VERTICAL

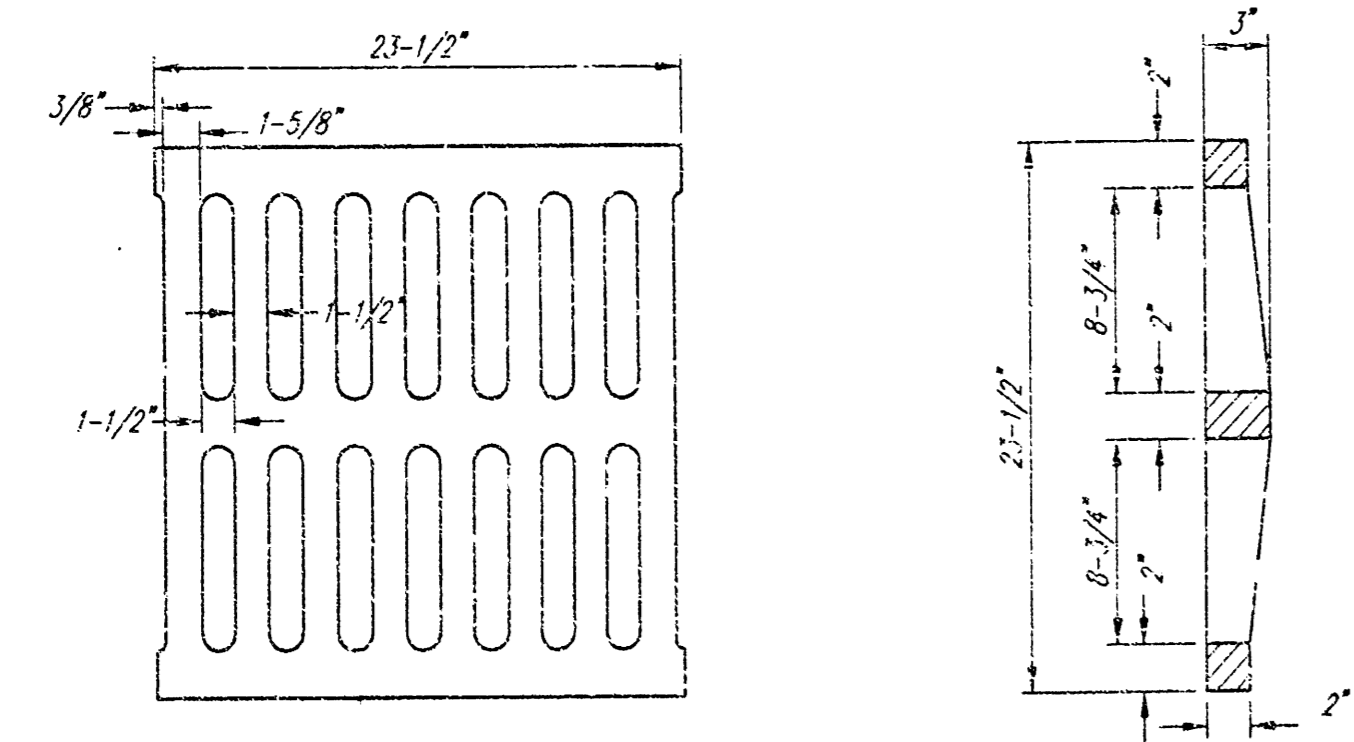


STORM WATER SEWER TO SERVE
Airport Industrial Park
LOT 8

BAUGHMAN COMPANY P.A.
ENGINEERING, SURVEYING, & PLANNING
316-262-7271 • 316 ELLIS • WICHITA, KANSAS 67211

PROJECT NUMBER
975 PPS (607881)

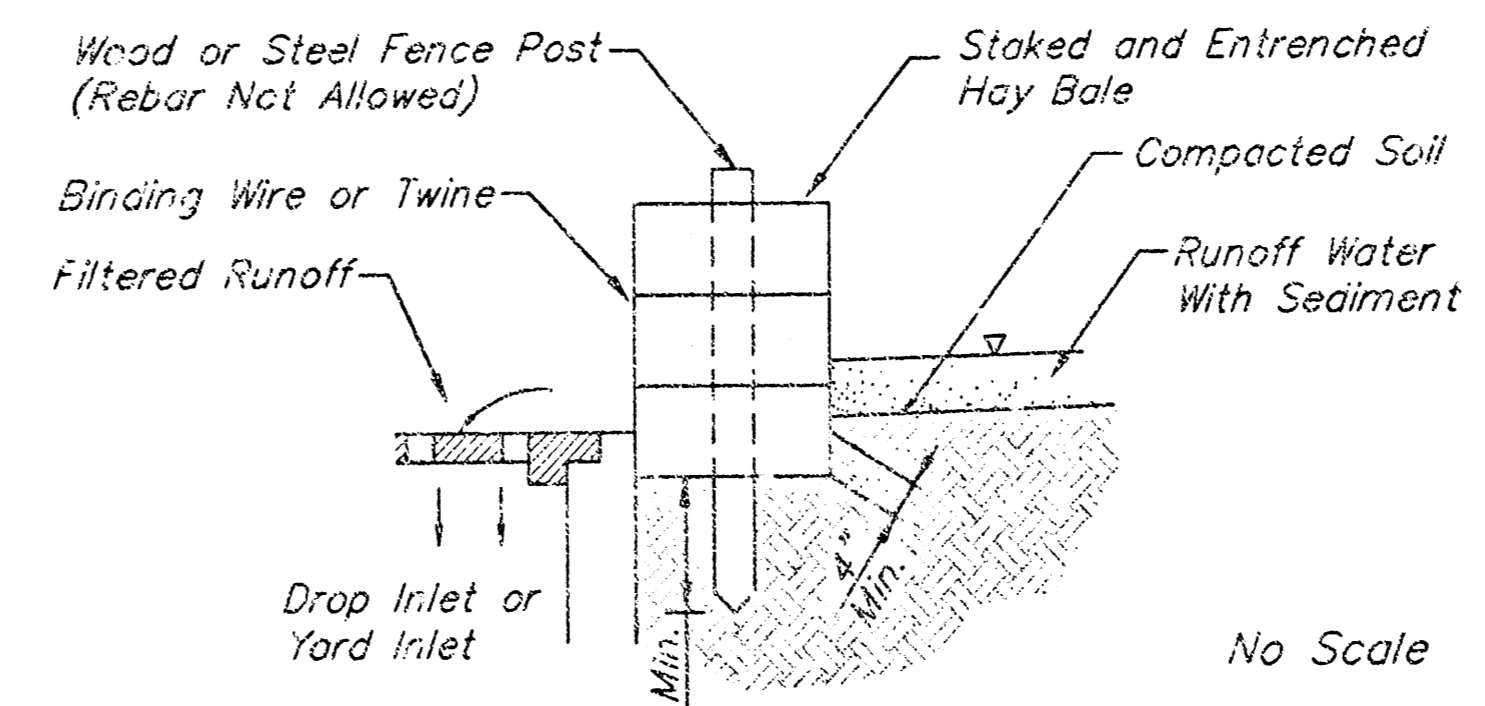
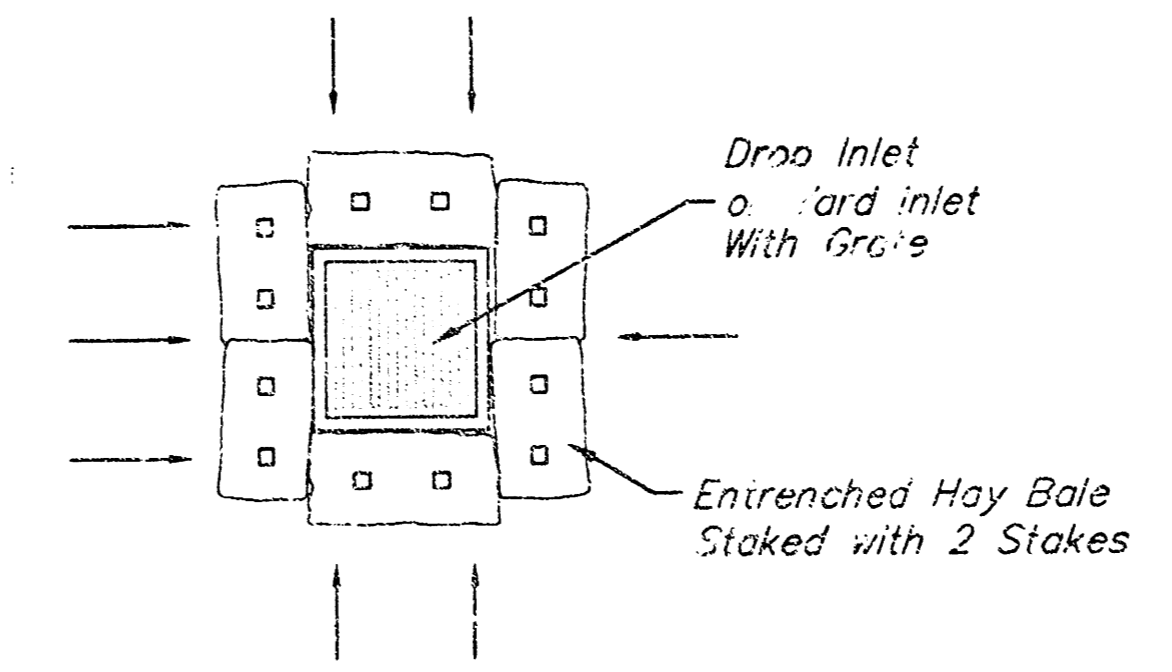
DESIGN JB	DRAWN DC	APPROVED NBW	DATE 2/00	SCALE NOTED	SHEET 3 OF 5
--------------	-------------	-----------------	--------------	----------------	-------------------------------------



DEETER #2433 GRATE

24" x 24" Frame and Grate Detail

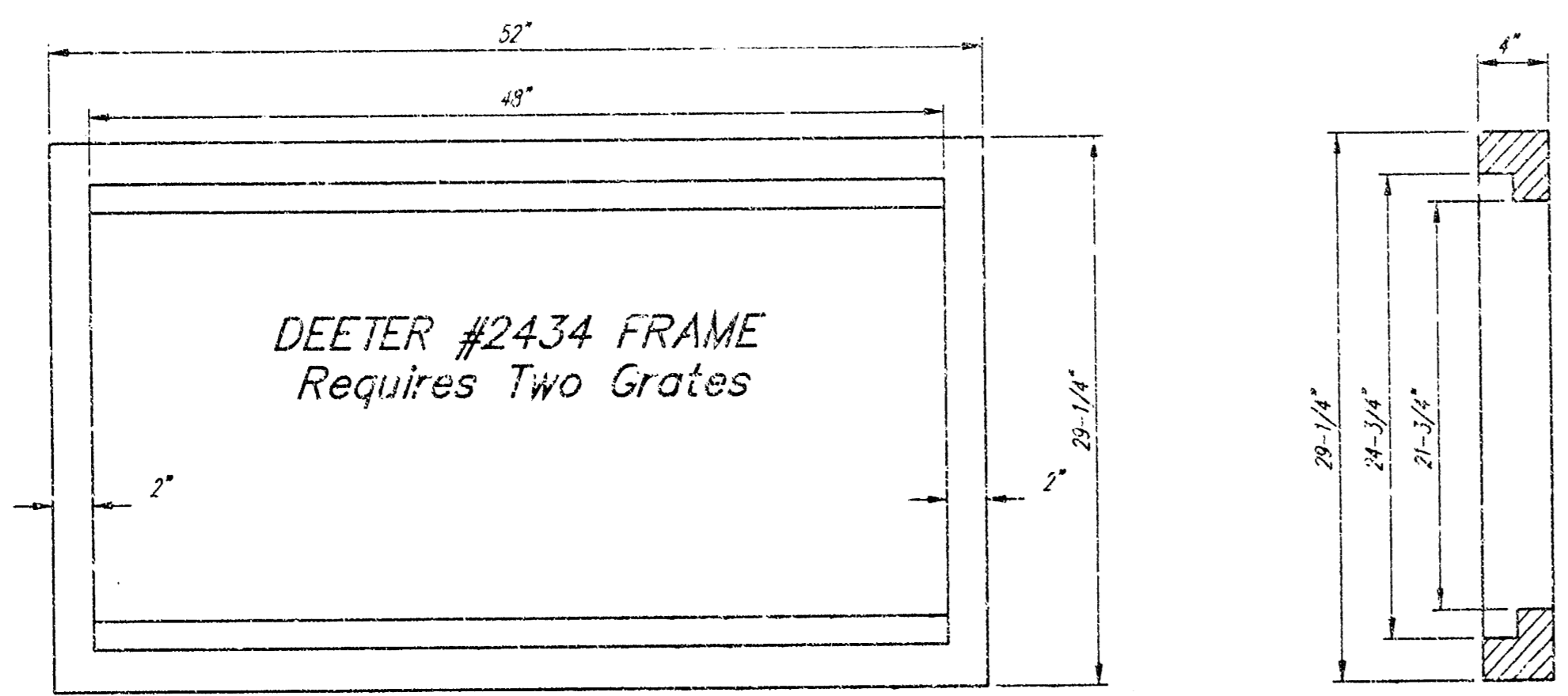
NOTE: Grates shall be imprinted on the top surface with "CITY OF WICHITA" using letters at least 1" in height. Other marking methods may be approved by the engineer.



Hay Bale Barrier Detail

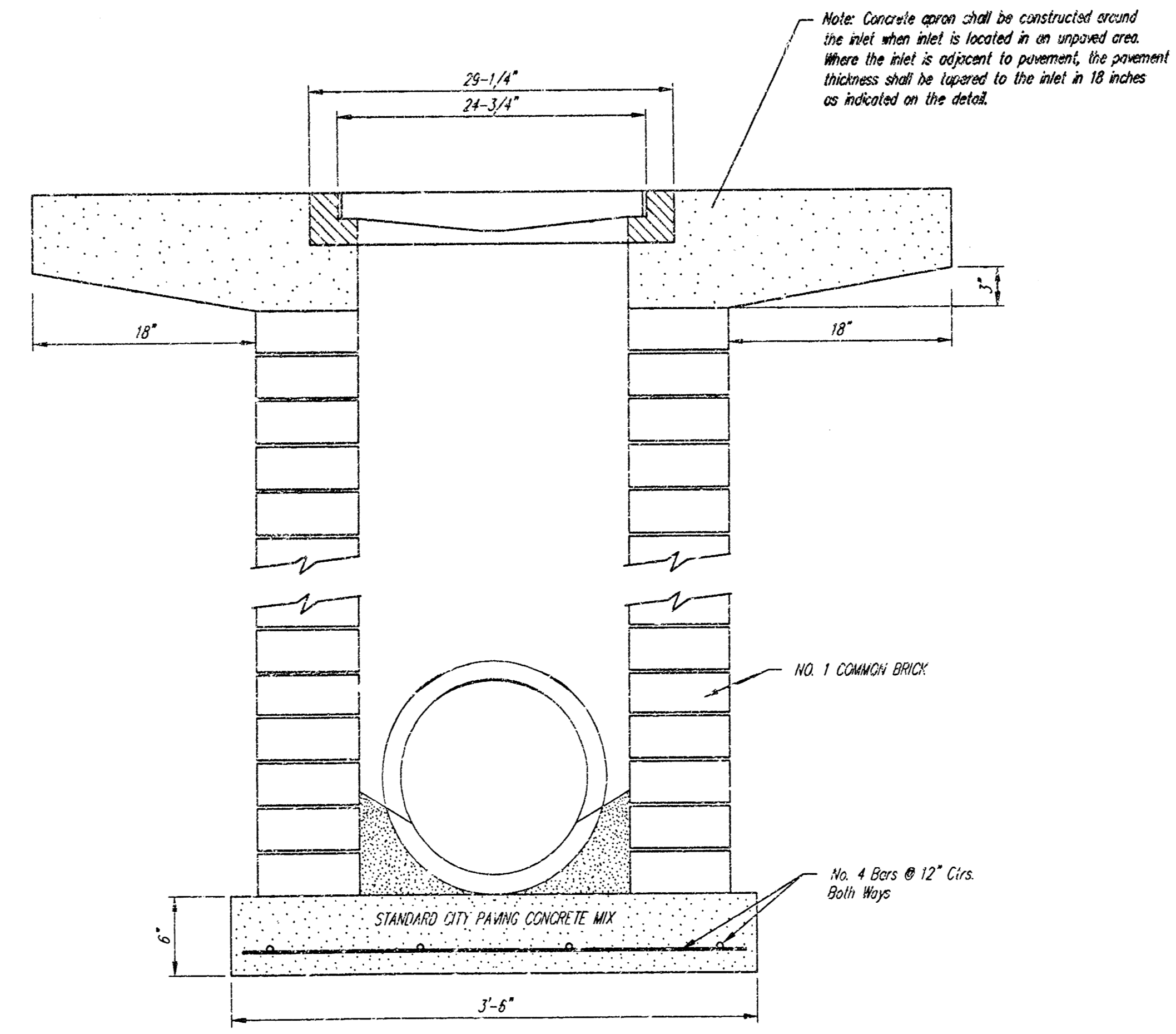
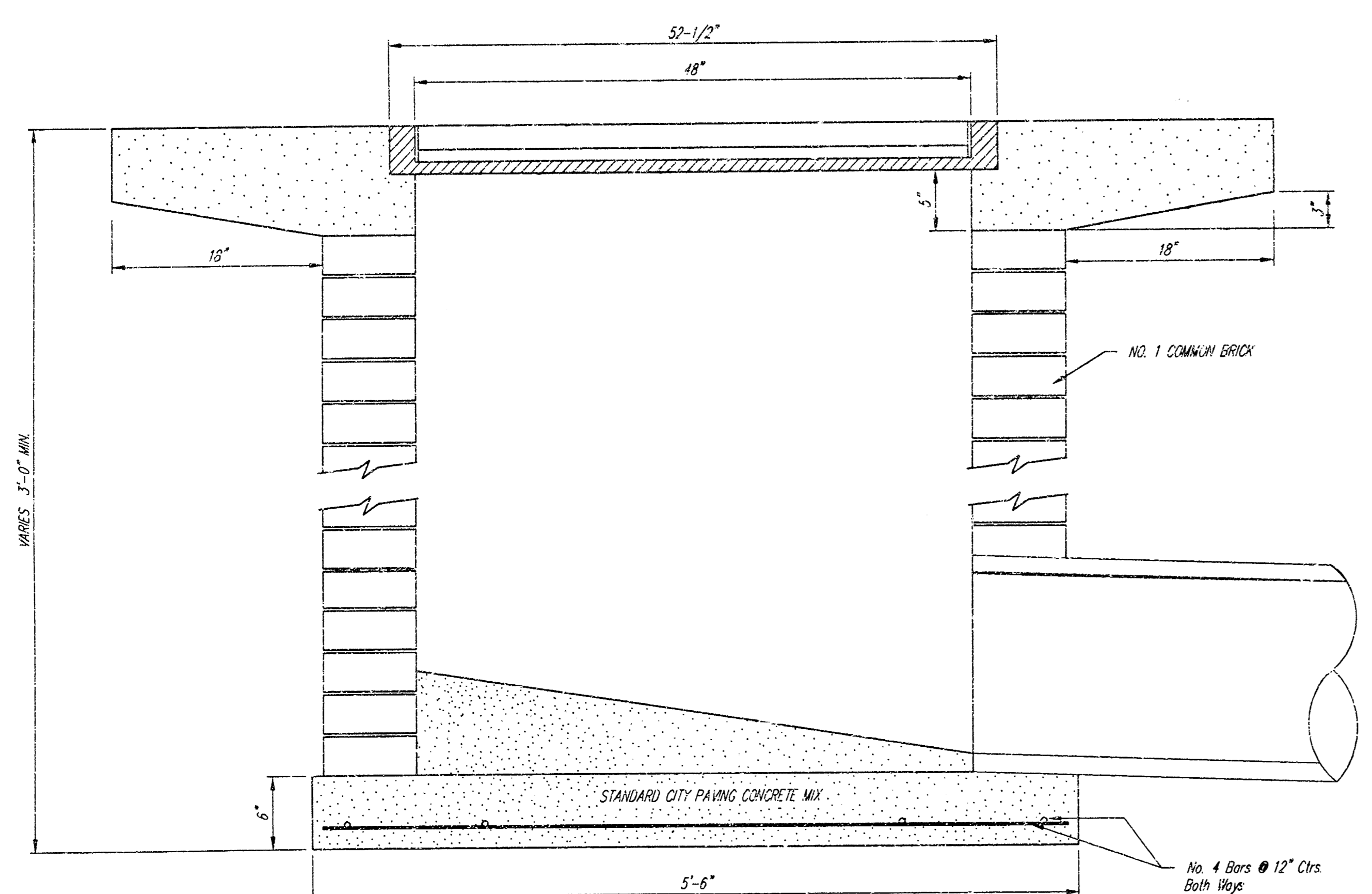
Note: "Dandy Bags" may be used as an alternative to Hay Bale Barriers. For more information on the "Dandy Bags" call Merideth Brothers, Inc., Suppliers of Dandy Products at 1-800-591-2264. Hay Bale Barriers or "Dandy Bags" to be paid per Each as Sediment Barriers.

SEDIMENT BARRIER DETAIL 1



DEETER #2434 FRAME Requires Two Grates

Double 24" x 24" Frame Detail

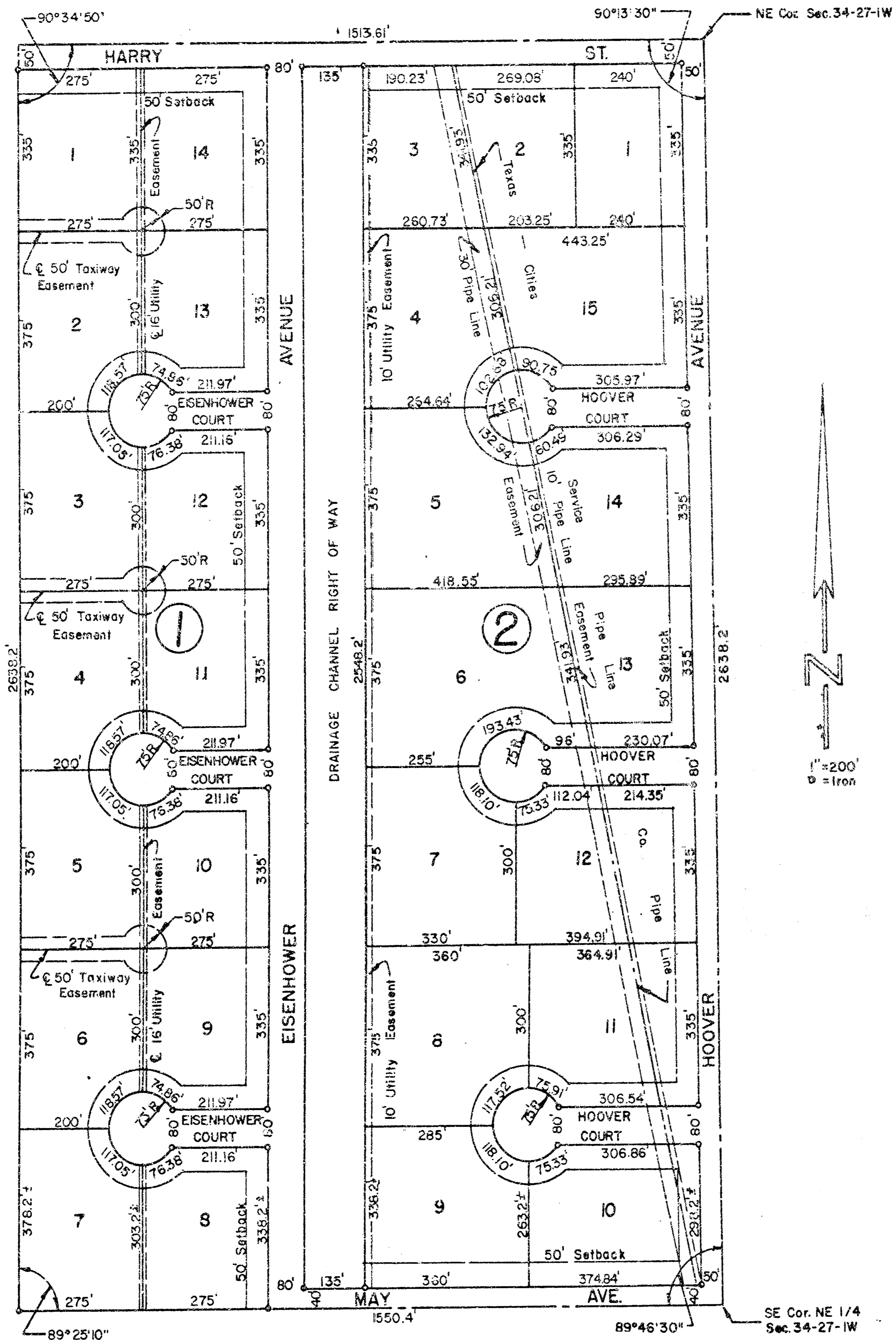


Note: Concrete apron shall be constructed around the inlet when inlet is located in an ungraded area. Where the inlet is adjacent to pavement, the pavement thickness shall be tapered to the inlet in 18 inches as indicated on the detail.

CITY OF WICHITA				
Drop Inlet & Sediment Barrier				
DETAILS				
BAUGHMAN COMPANY P.A.				
ENGINEERING, SURVEYING, & PLANNING				
316-262-7271 • 315 ELLIS • WICHITA, KANSAS 67201				
PROJECT NUMBER				
975 PFS (607861)				
DESIGN STAFF	DRAWN STAFF	APPROVED NEW	DATE 02/01	SCALE NONE
				SHEET 4 OF 5

AIRPORT INDUSTRIAL PARK

WICHITA, SEDGWICK COUNTY, KANSAS



Entered on transfer record this 16 day of December, 1964.
J.O. Williams, County Clerk

STATE OF KANSAS)
 COUNTY OF SEDGWICK) SS
 This is to certify that this instrument was filed for record in the Register of Deeds Office on the 18 day of December, 1964, at 4:10 o'clock, P.M. and is duly recorded.
Raynor E. Weising
 Register of Deeds
Paul R. Hubert
 Deputy

Approved by the Board of City Commissioners this 10th day of November, 1964.
Edward Boyant, Mayor
Robert M. Smith, City Clerk

STATE OF KANSAS)
 COUNTY OF SEDGWICK) SS
 I, Kenneth C. Taylor, Civil Engineer in said county and state, do hereby certify that I have surveyed and platted "AIRPORT INDUSTRIAL PARK", Wichita, Sedgwick County, Kansas:
 The east 92 acres of the NE 1/4 of Section 34, T27S, R1W of the 6th P.M., also described as the NE 1/4 of Section 34, T27S, R1W of the 6th P.M., except the west 122.83 feet thereof.
K.O. Taylor, Civil Engineer

Know all men by these presents that we, Dale Frey and Betty Frey, husband and wife, have caused the land described in the Civil Engineer's Certificate to be platted into lots, blocks and streets to be known as "AIRPORT INDUSTRIAL PARK", Wichita, Sedgwick County, Kansas. Utility easements are hereby granted as indicated on the plat for the construction and maintenance of all public utilities. The streets are hereby dedicated to and for the use of the public. The drainage channel right of way as indicated on the plat is hereby dedicated to the public for drainage purposes.
Dale Frey *Betty Frey*

STATE OF KANSAS)
 COUNTY OF SEDGWICK) SS
 Be it remembered that on this 29th day of October, 1964, before me, a Notary Public in and for said county and state, came Dale Frey and Betty Frey, husband and wife, to me personally known to be the same persons who executed the foregoing instrument of writing and duly acknowledged the execution of same. In testimony whereof, I have hereunto set my hand and affixed my notarial seal the day and year above written.
Calvin Handman, Notary Public
 My Commission expires November 28, 1967.

Know all men by these presents that Haysville State Bank, a corporation, mortgagee of the property described in the Civil Engineer's Certificate does hereby consent to the platting of "AIRPORT INDUSTRIAL PARK", Wichita, Sedgwick County, Kansas.
 HAYSVILLE STATE BANK
George J. ...
 Executive Vice President and Cashier

ATTORNEY:
John W. ...
 STATE OF KANSAS)
 COUNTY OF SEDGWICK) SS
 Be it remembered that on this 2nd day of NOVEMBER, A.D., 1964, before me the undersigned, a Notary Public in and for the county and state aforesaid, came C. Wayne Stearns, Executive Vice President and Cashier of Haysville State Bank, a corporation, to me personally known to be the same person who executed the within instrument as Executive Vice President and Cashier of said corporation, and such person duly acknowledged the execution of the same as Executive Vice President and Cashier, for and on behalf of, and as the act and deed of said corporation.
 My Commission expires AUGUST 1, 1967.
Rosalie M. Craine, Notary Public

This plat of "AIRPORT INDUSTRIAL PARK", Wichita, Sedgwick County, Kansas, has been approved by the Wichita-Sedgwick County Metropolitan Area Planning Commission, Wichita, Kansas, and is hereby transmitted to the Board of Commissioners of the City of Wichita, Kansas, with the recommendation that such plat be approved as proposed.
 Dated this 15th day of OCTOBER, 1964.

WICHITA-SEDGWICK COUNTY METROPOLITAN AREA PLANNING COMMISSION
John W. ..., Chairman
C. Bickley ..., Secretary
 Approved by the Board of County Commissioners this 8th day of December, 1964.
Edward ..., Chairman
High ..., Commissioner
Ann ..., Commissioner
J.O. Williams, County Clerk