

STORM SEWER IMPROVEMENTS TO SERVE

Wichita Ford Tractor, Inc.

Project Number

1047 PPS (007861)

CITY OF WICHITA, KANSAS

Michael E. Lindebak, P. E., City Engineer

INDEX

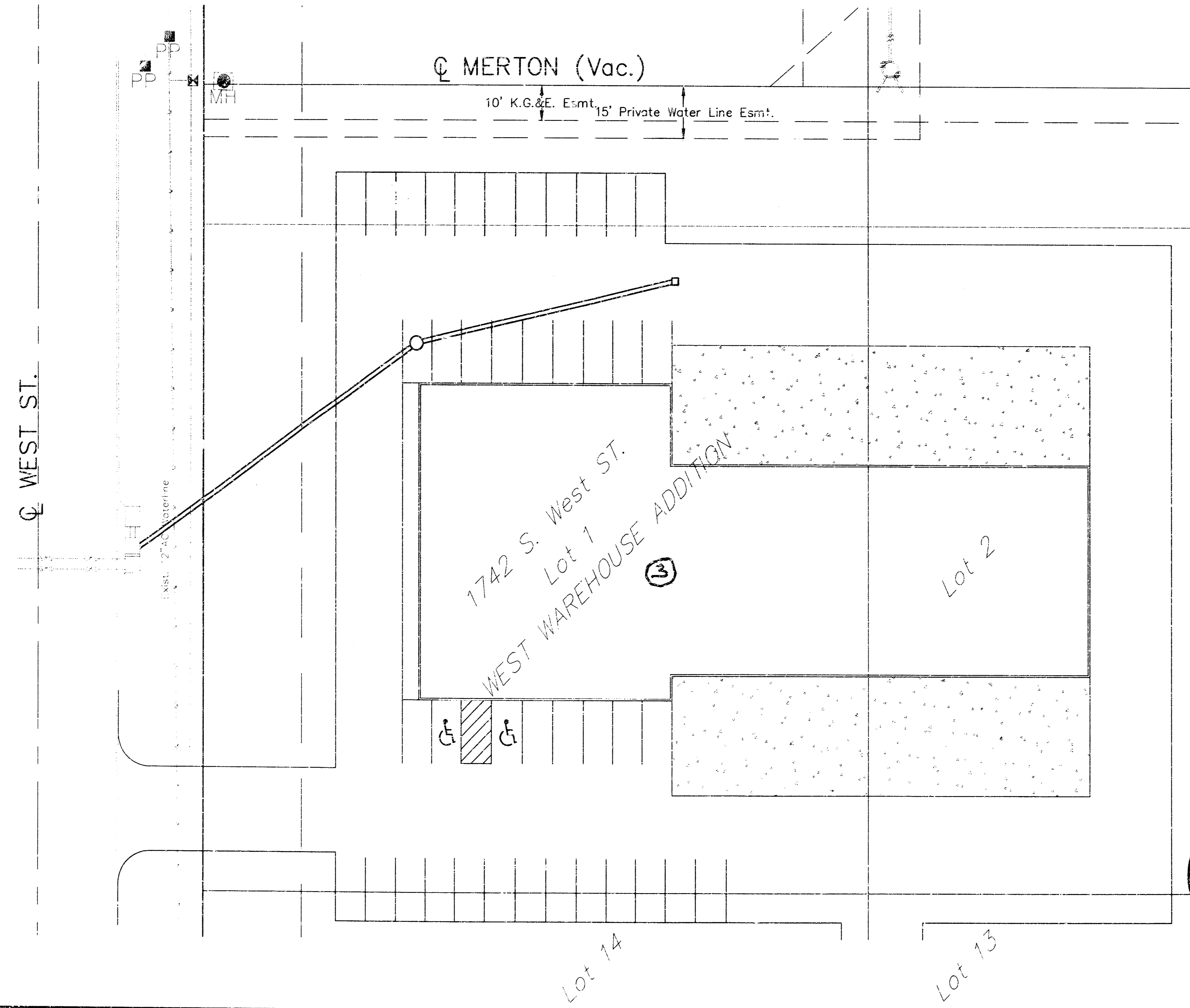
- 1 Cover
- 2 Plan and Profile

GENERAL NOTES

- Contractor will be required to provide notice to utility companies a minimum of twenty-four (24) hours prior to any excavation, as follows:
 Kansas One-Call 687-2470
 The Contractor must notify the following in case of an emergency:
 Cablevision 262-4270
 or 263-2061
 K.P.L. Gas Service Company 383-6650
 Kansas Gas & Electric Company 383-8600
 Peoples Natural Gas Gas 942-8811
 or 1000-303-0357
 Southwestern Bell Telephone Company 1-571-2611
 City of Wichita Water Department 268-4908
 City of Wichita Sewer Department 268-4071
 Kansas Gas Service 832-3168
 or 832-3167
- Exist. utilities and their locations, as shown on the plans, represent the best information obtainable for design. Location information has been obtained from the various utility companies and is either from company record drawings or company-provided field locations. The Contractor will be required to work around existing utilities which do not conflict with proposed construction.
- The Contractor to verify utility locations prior to construction of this project.
- Utility service and installation shall be coordinated with the respective utility owners. Contacts are:
 Kansas Gas Service Jim Sultz 832-3122
 K.G.E. Russ Chitwood 261-6251
 Wichita Water Chuck Steven 268-4555
 Joe Botinelly 268-4908
 Southwestern Bell Jim Tabin 268-2759
- All areas disturbed by construction shall be seeded with rye Rebel II Fescure grass at a rate of 350 lbs./acre immediately following construction in that area.
- Traffic affected by the construction of this project shall be handled in accordance with the latest edition of the Manual on Uniform Traffic Control Devices.
- All lawn/turf areas disturbed by construction of proposed improvements shall be restored with the same grass/sod as existing. Restoration of disturbed areas shall include, but not be limited to, top soil preparation, seeding, mulch and/or reseeding. All seeding/sodding work shall be in accordance with the City of Wichita standard specifications and the City of Wichita administrative regulation No. AR78 which governs cleanup and replacement following construction. All costs for this work shall be subsidiary to the lump sum price bid for "Site Restoration."

BENCHMARK:

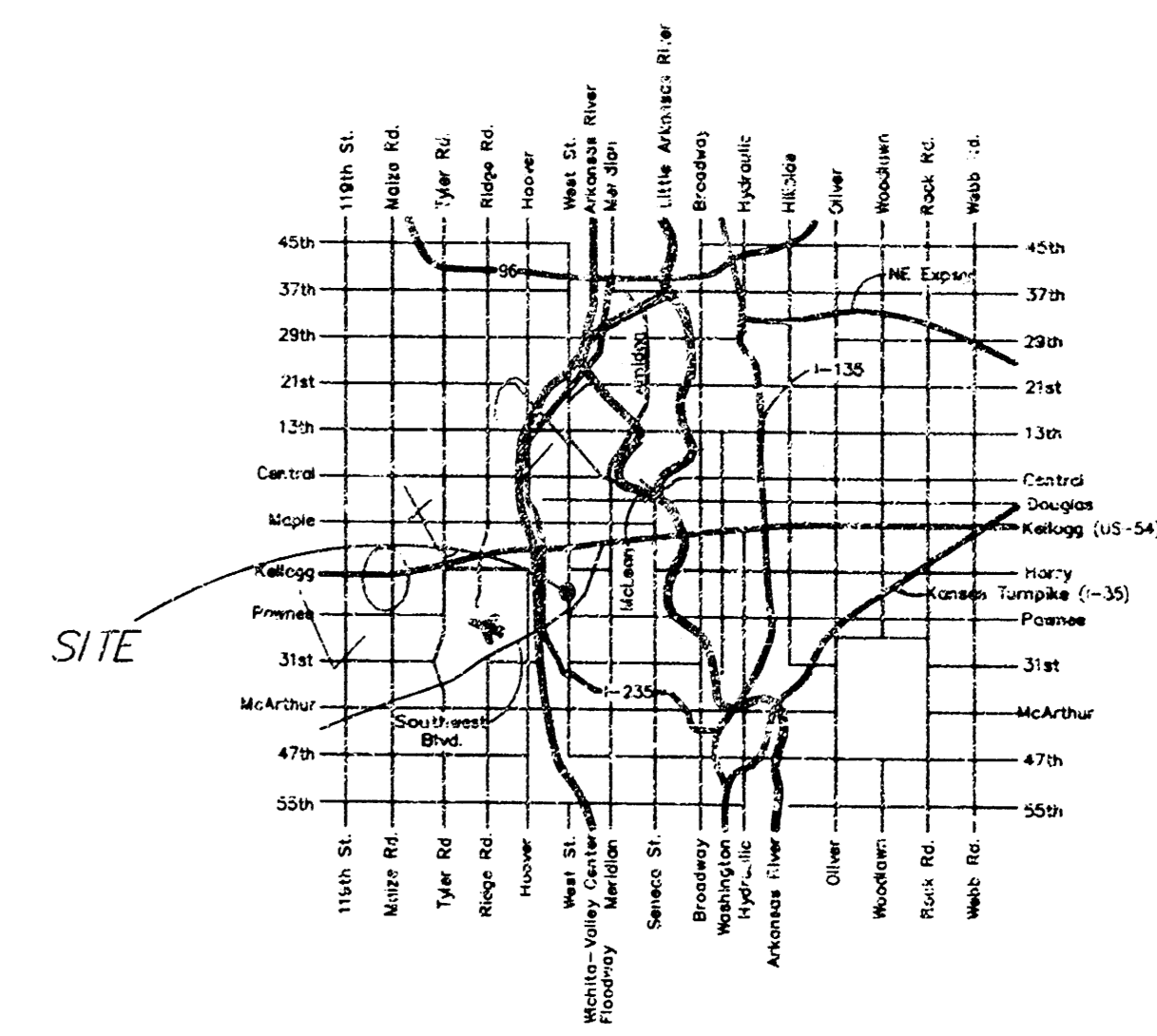
COW Bench Mark, NW cor intersection.
 63.0' west of str of West St. 50' north of
 ctr line May east. 23.8' north of str median.
 14.4' west of swst face walk. 2.5' north of bk of
 curb. 2.2' west of west face SWS inlet
 Elev. 108.63



Booked E-B
 12/24/03 RDL

AS-BUILT

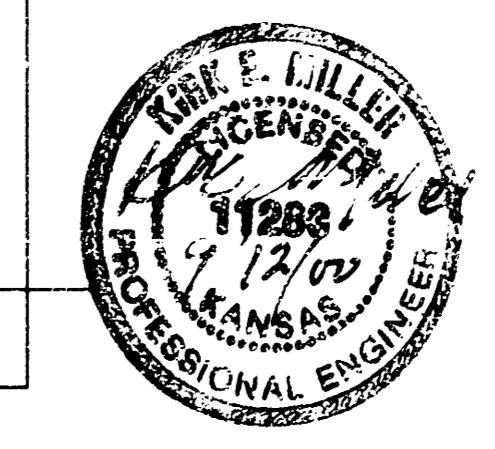
Date: 10/23/03
 Signed: [Signature]



LOCATION MAP

APPROVED AS NOTED BY CITY ENGINEER OF WICHITA
 STORM SEWERS URH 9/2/00

Inspection and testing for this project are to be provided by a Licensed Consulting Engineering Firm under contract with the Owner/Developer. Said inspection is to be in accordance with the City of Wichita standard construction engineering practices and certified by a Licensed Professional Engineer. No work shall be performed in dedicated easements or public right-of-way by the Contractor without such inspection nor shall work be commenced without written authorization by the City Engineer. All construction and materials shall comply with the City of Wichita Specifications and Standards (on file and available in the City Engineer's Office).



MILLER P.L.L.C.
ENGINEERING SERVICES
 355 N. Waco, Suite 200 Wichita, KS 67202
 316/262-1281 Fax: 316/262-6773

