

- GAS — = GAS LINE
- SS — = SANITARY SEWER LINE
- SWS — = STORM WATER SEWER
- W — = WATER MAIN
- P — = PROPERTY LINE

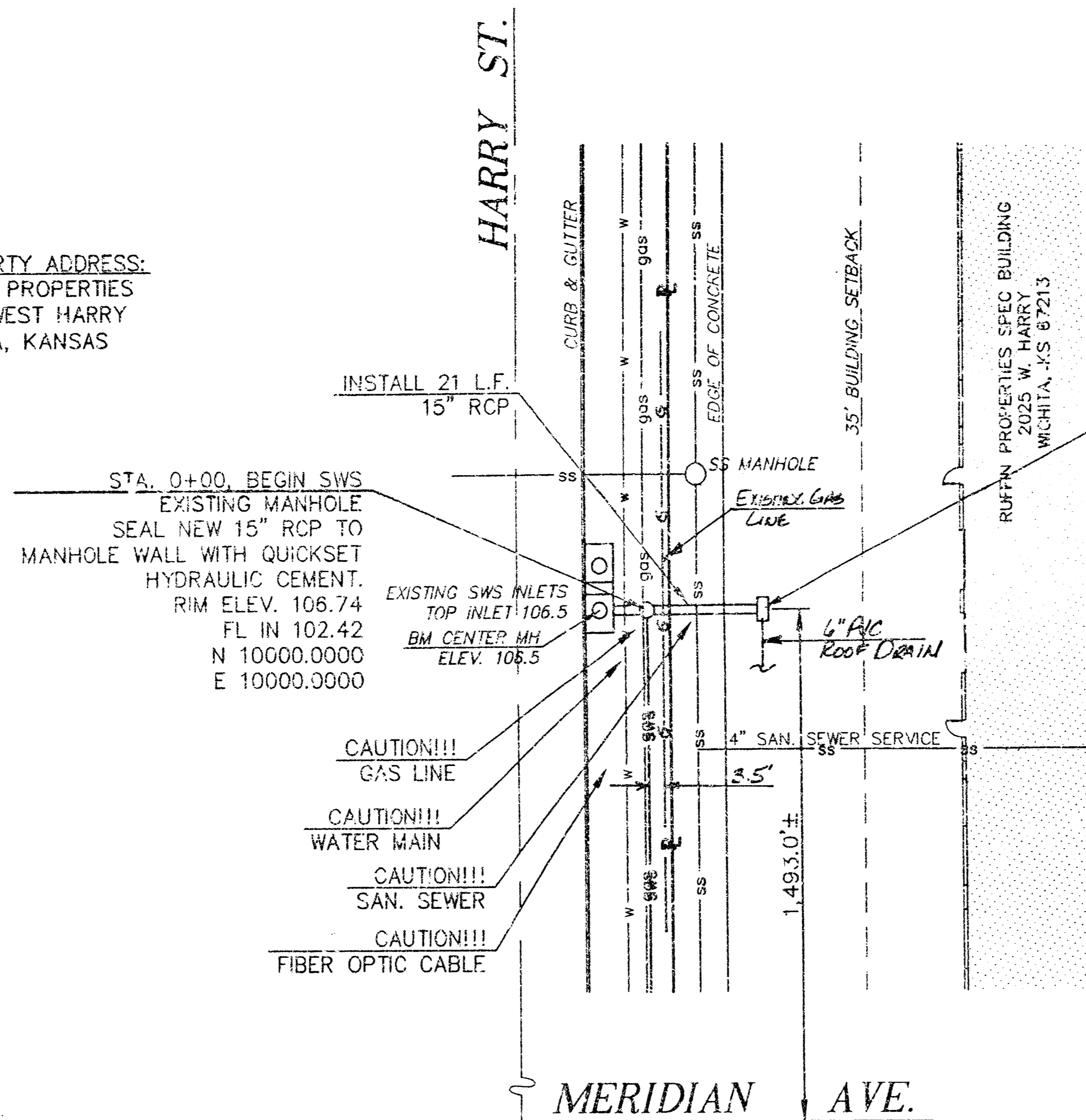
APPROVED AS NOTED
By CITY ENGINEER OF WICHITA

Sanitary Sewers	_____
Storm Sewers	VRH 12/1/00
Driveway Approaches	_____
Water Mains	_____
Paving	_____

NOTE TO CONTRACTOR

INSPECTION AND TESTING FOR THIS PROJECT IS TO BE PROVIDED BY A LICENSED CONSULTING ENGINEERING FIRM UNDER CONTRACT WITH THE OWNER/DEVELOPER. SAID INSPECTION TO BE IN ACCORDANCE WITH THE CITY OF WICHITA STANDARD CONSTRUCTION ENGINEERING PRACTICES AND CERTIFIED BY A LICENSED PROFESSIONAL ENGINEER. NO WORK SHALL BE PERFORMED IN DEDICATED EASEMENTS OR THE PUBLIC RIGHT-OF-WAY BY THE CONTRACTOR WITHOUT SUCH INSPECTION NOR SHALL ANY WORK BE COMMENCED IN DEDICATED EASEMENTS OR PUBLIC RIGHT-OF-WAY WITHOUT WRITTEN AUTHORIZATION BY THE CITY ENGINEER.

PROPERTY ADDRESS:
RUFFIN PROPERTIES
2025 WEST HARRY
WICHITA, KANSAS

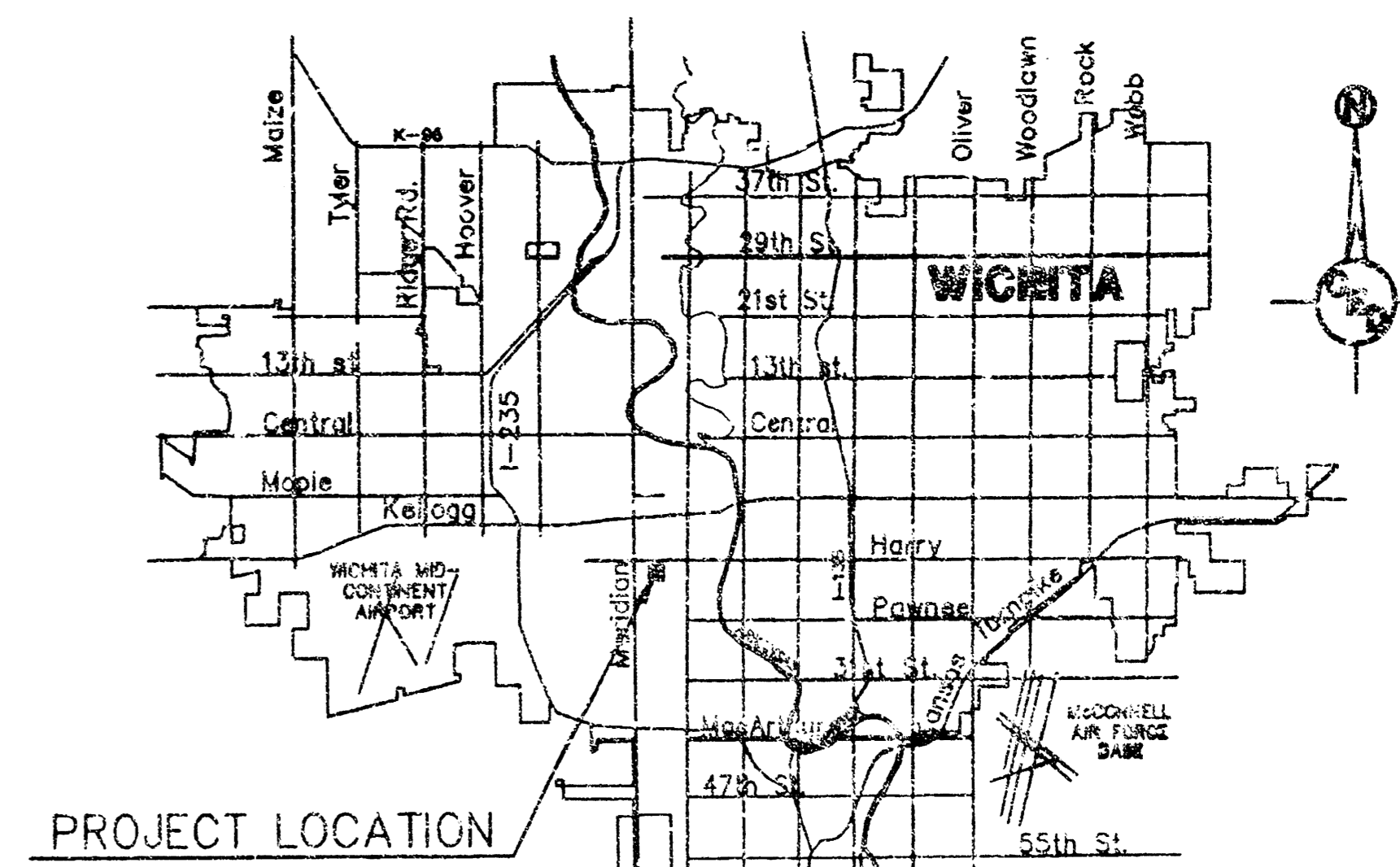


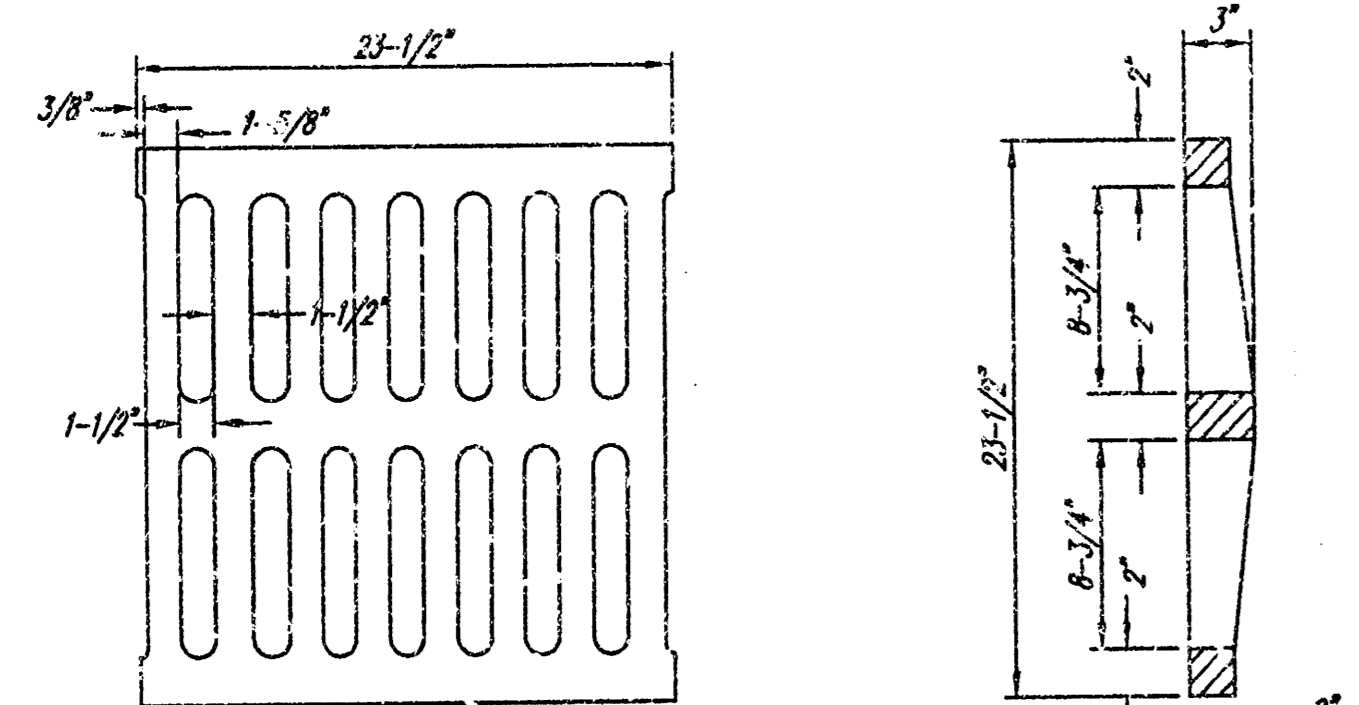
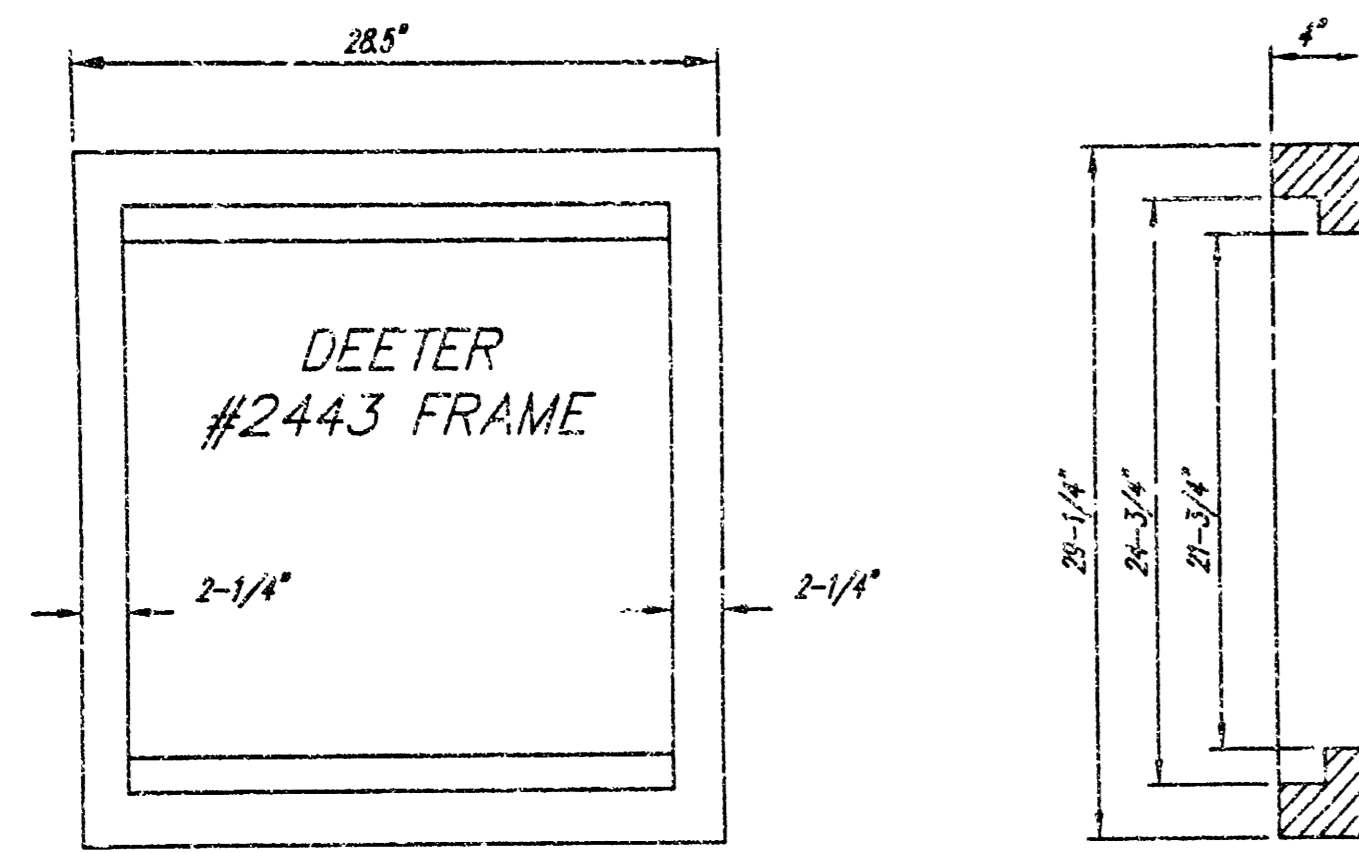
STA. 0+21, END SWS
CONST. STD. 2'x4' DROP INLET (SEE DETAIL SHEET NO. 2) SEAL NEW 15" RCP TO INLET WALL WITH QUICKSET HYDRAULIC CEMENT.
TOP ELEV. 105.23
FL OUT 102.63
N 9979.0000
E 10000.0000
PVC WHITE STOP
ROCKED BY CONTRACTOR
(WALL TO BASE OF JOINT) JUNE 1, 2001.

*SANTA FE ORIENT INDUSTRIAL DISTRICT
3rd Addn.*

SITE RESTORATION

ALL LAWN/TUF AREAS DISTURBED BY CONSTRUCTION OF THE PROPOSED IMPROVEMENTS SHALL BE RESTORED WITH THE SAME GRASS/SOD AS EXISTING. RESTORATION OF DISTURBED AREAS SHALL INCLUDE, BUT NOT BE LIMITED TO, TOP SOIL PREPARATION, SEEDING, MULCH, AND/OR RESEEDING. ALL SEEDING/SODDING WORK SHALL BE IN ACCORDANCE WITH THE CITY OF WICHITA STANDARD SPECIFICATIONS WHICH GOVERNS CLEANUP AND RESTORATION OR REPLACEMENT FOLLOWING CONSTRUCTION. ALL COSTS FOR THIS WORK SHALL BE SUBSIDIARY TO THE LUMP SUMP PRICE BID FOR " SITE RESTORATION".

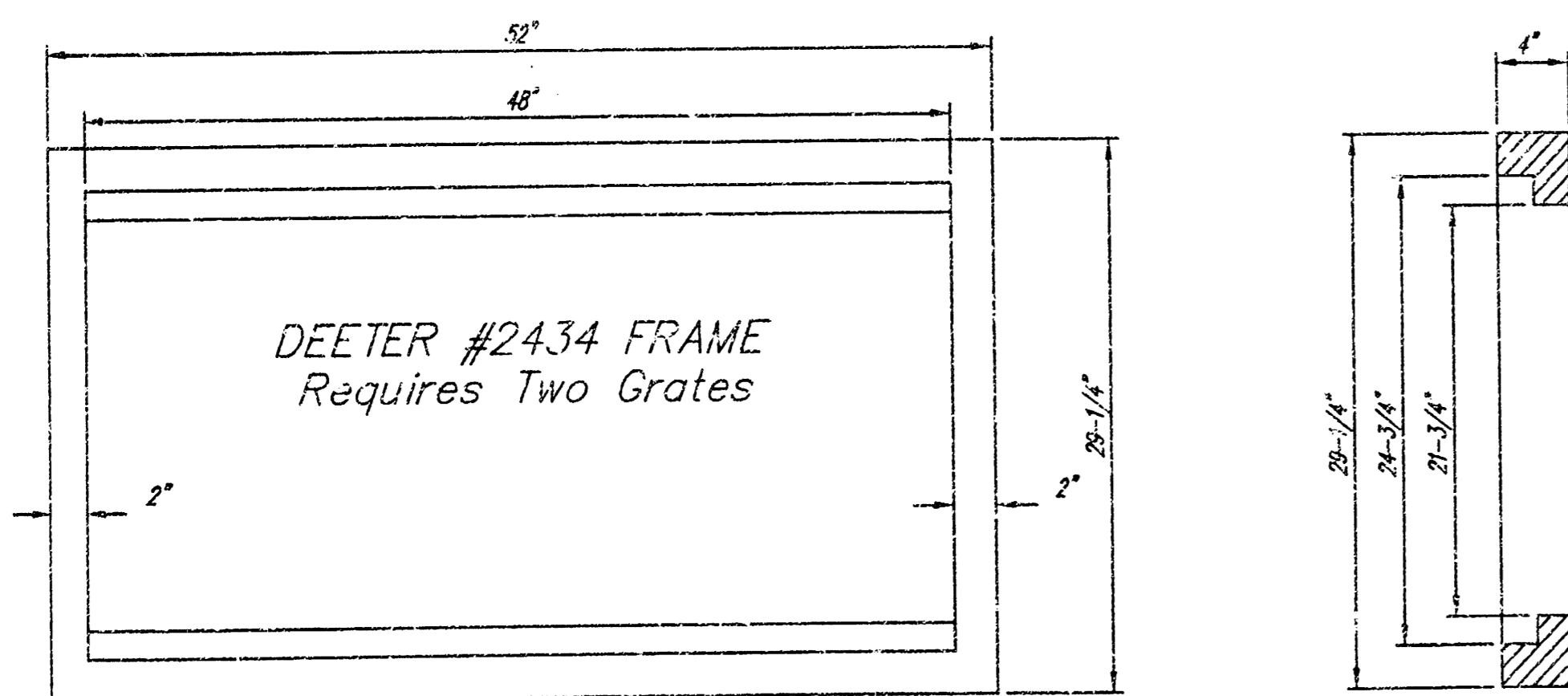




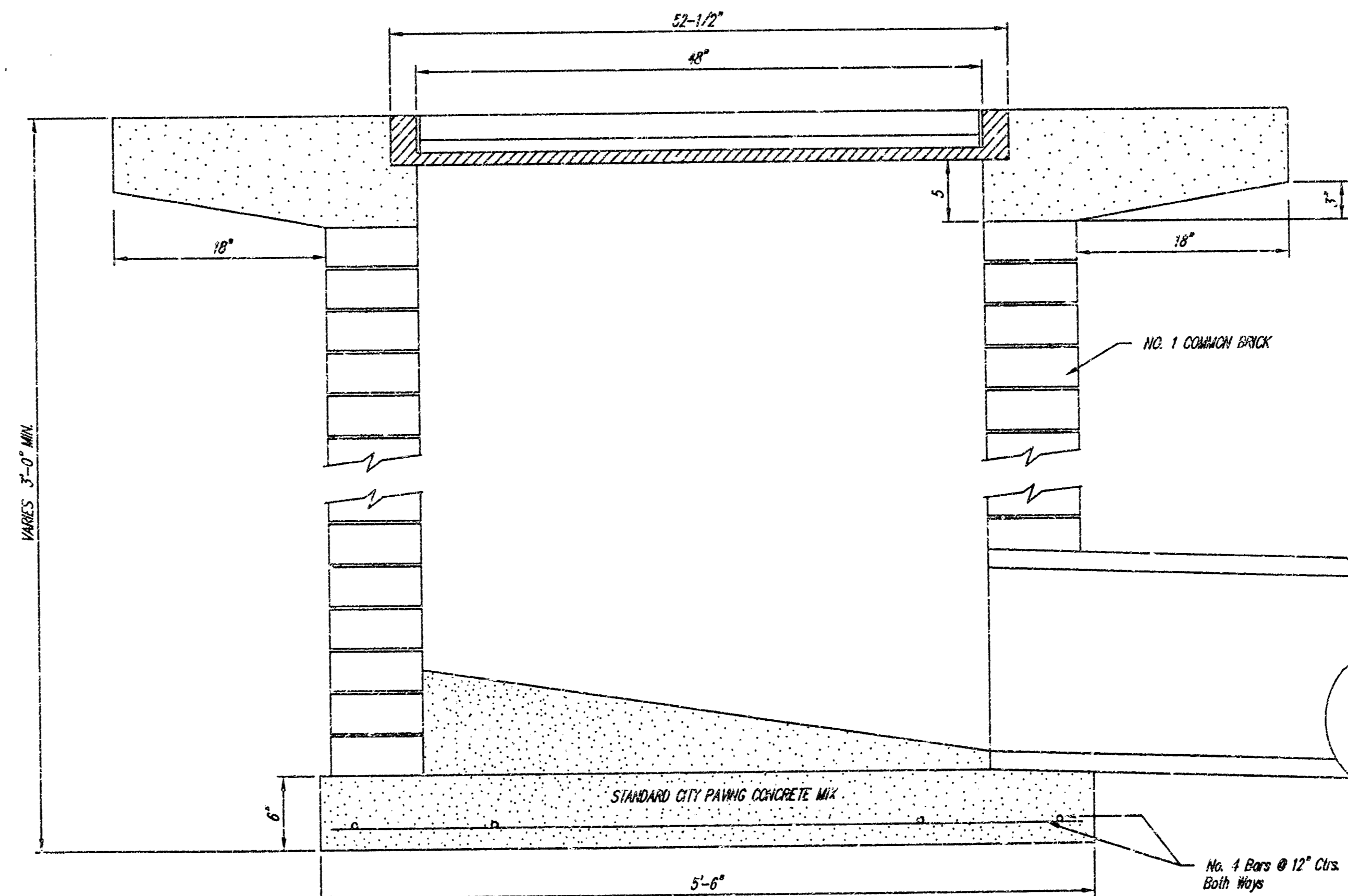
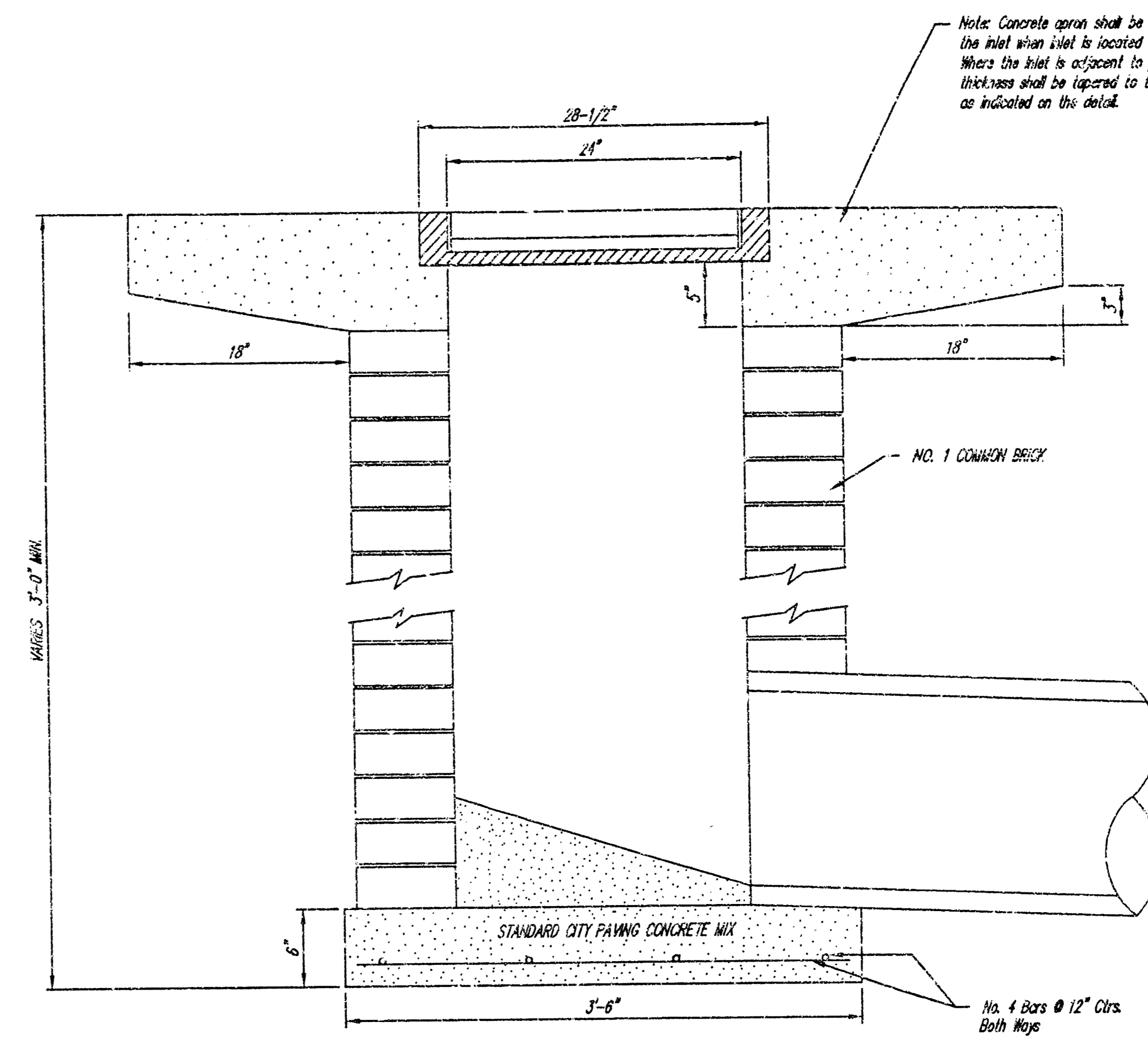
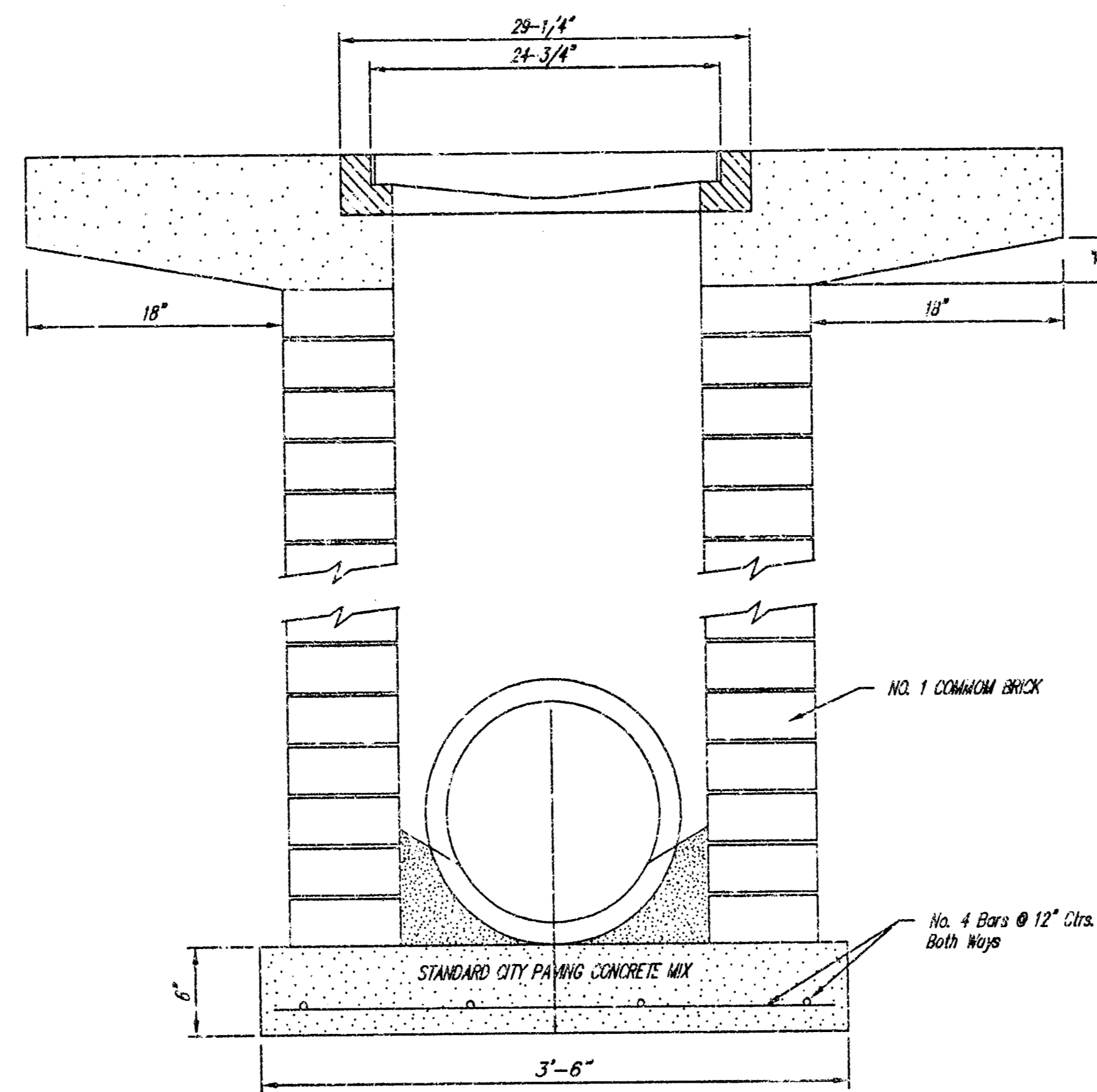
DEETER #2433 GRATE

24" x 24" Frame and Grate Detail

NOTE: Grates shall be imprinted on the top surface with "CITY OF WICHITA" using letters at least 1" in height. Other marking methods may be approved by the engineer.



Double 24" x 24" Frame Detail



DROP INLET DETAILS		
RUFFIN PROPERTIES		
2026 WEST HARRY, WICHITA, KANSAS		
PROJNO.: 1066 PPS(607861)		
CERTIFIED ENGINEERING DESIGN		
810 W. DOUGLAS, SUITE C		
WICHITA, KANSAS 67203		
(316) 262-8808		
DESIGNED: HDF	SCALE: NOTED	SHEET
DRAWN: AEE	DATE: 10-00	SWS-2
CHECKED: HDF	CED FILE: ruffin--inlet	TOTAL 2