

PRIVATE STORM SEWER PLANS FOR FEDEX GROUND

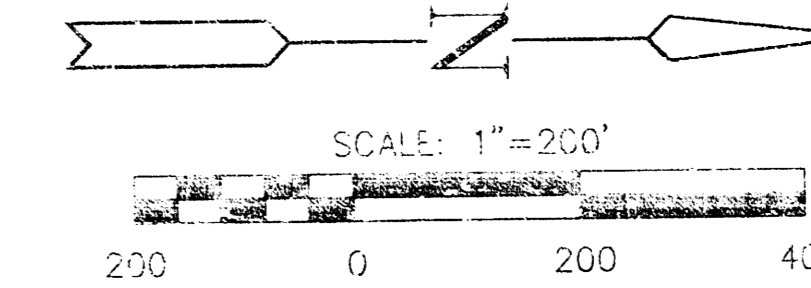
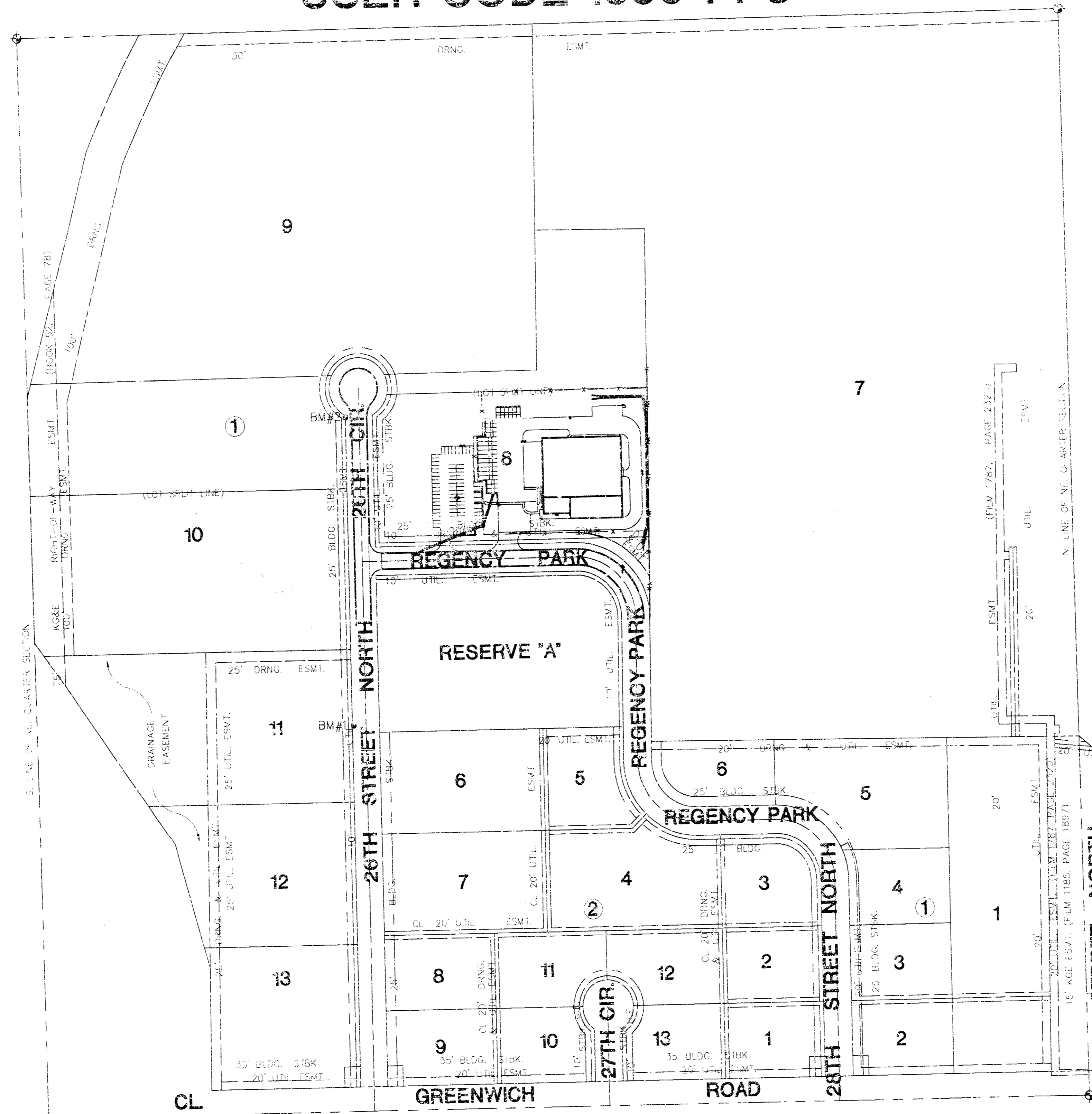
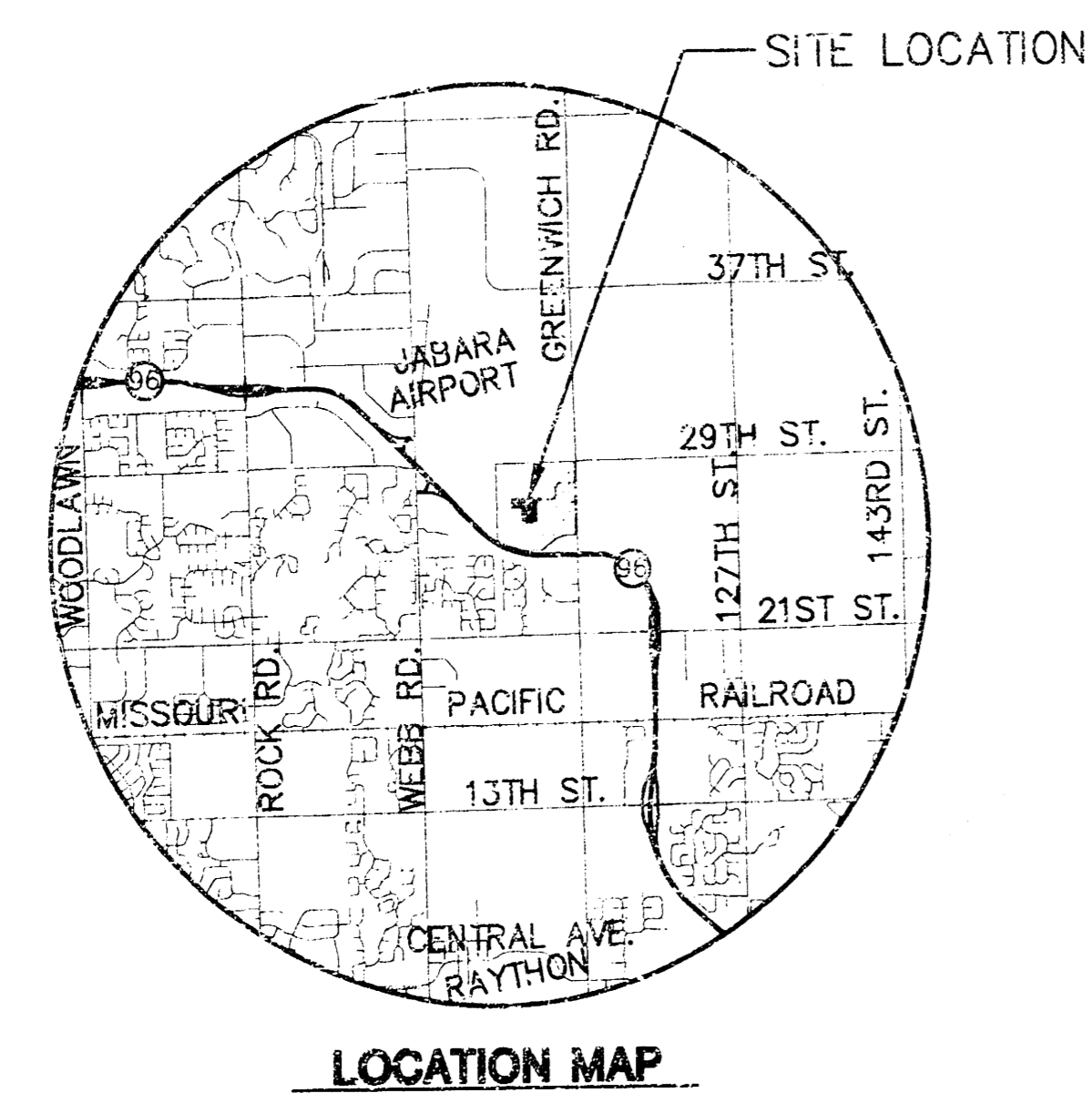
CITY OF WICHITA, KANSAS
MICHAEL E. LINDEBAK, CITY ENGINEER

OCA NO. 607861
USER CODE 1096 PPS

GENERAL NOTES

1. THE TOPS OF INLETS AS NOTED ON THE PLANS MAY VARY SO AS TO MEET PROPOSED TOP OF CURB ELEVATIONS OR PAVEMENT ELEVATIONS. THE FIELD ENGINEER SHALL LOCATE INLETS WITH REFERENCE TO PROPOSED PAVING PLANS OF THE PERTINENT STREETS.
2. ALL CONCRETE SHALL BE STANDARD PAVING MIX UNLESS OTHERWISE NOTED.
3. THE CONTRACTOR SHALL BE RESPONSIBLE FOR PRESERVING PROPERTY IRONS. THE CONTRACTOR SHALL BE REQUIRED TO RE-ESTABLISH ANY PROPERTY IRONS WHICH ARE DAMAGED OR DESTROYED DURING CONSTRUCTION OPERATIONS. SUCH IRONS SHALL BE RE-ESTABLISHED BY A LICENSED LAND SURVEYOR IN ACCORDANCE WITH STATE LAWS.
4. TREES TO BE REMOVED ARE MARKED . ALL TREES WHICH IN THE OPINION OF THE FIELD ENGINEER CAN BE SAVED, SHALL BE SAVED.
5. EXISTING UTILITIES AND THEIR LOCATIONS, AS SHOWN ON THE PLANS REPRESENT THE BEST INFORMATION OBTAINABLE FOR DESIGN. LOCATION INFORMATION HAS BEEN OBTAINED FROM THE VARIOUS COMPANIES AND IS EITHER FROM COMPANY UTILITY DRAWINGS OR COMPANY PROVIDED FIELD LOCATIONS. THE FIELD LOCATIONS SHOWN ARE NOT GUARANTEED. ADDITIONAL EXISTING UTILITIES MAY ALSO BE ENCOUNTERED.
6. CONTRACTOR WILL BE REQUIRED TO PROVIDE A MINIMUM ADVANCE NOTICE OF FORTY-EIGHT (48) HOURS TO UTILITY COMPANIES PRIOR TO STARTING ANY EXCAVATION AS FOLLOWS:

KANSAS ONE-CALL	1-800-344-7233
THE CONTRACTOR MUST NOTIFY THE FOLLOWING IN CASE OF AN EMERGENCY:	
CABLEVISION	263-2061
ARKLA GAS COMPANY	263-7511
KANSAS GAS & ELECTRIC	264-1141
SOUTHWEST BELL TELEPHONE COMPANY	1-571-2611
CITY OF WICHITA WATER & SEWER MAINT.	262-6000
7. UNLESS SHOWN OR STATED OTHERWISE ON THESE DRAWINGS, MATERIALS AND CONSTRUCTION SHALL BE IN ACCORDANCE WITH CITY OF WICHITA SPECIFICATIONS.
8. RUBBLE FROM THE REMOVAL OF MISCELLANEOUS STRUCTURES AND EXCESS EXCAVATION WHICH IS TO BE WASTED SHALL BE DISPOSED OF ON SITES TO BE PROVIDED BY THE CONTRACTOR. THESE SITES SHALL BE APPROVED BY THE ENGINEER AS TO SUITABILITY, APPEARANCE AND SITE LOCATION. LOCATIONS THAT, IN THE OPINION OF THE ENGINEER, WILL LEAVE AN UNSIGHTLY APPEARANCE WILL NOT BE APPROVED. ALL DISPOSAL SITES MUST BE APPROVED BY THE KANSAS DEPARTMENT OF HEALTH AND ENVIRONMENT. MATERIAL EITHER STOCKPILED OR DISPOSED OF IN A FLOOD PLAIN WOULD REQUIRE A KANSAS STATE BOARD OF AGRICULTURE PERMIT. ANY MATERIAL DUMPED IN WATERS OF THE UNITED STATES OR WETLANDS IS SUBJECT TO U.S. CORPS OF ENGINEERS PERMITTING REGULATIONS. ANY MATERIAL BURIED OR STOCKPILED BEYOND APPROVED CONSTRUCTION LIMITS WOULD REQUIRE ADDITIONAL ARCHAEOLOGICAL INVESTIGATIONS UNLESS BURIED IN A PREVIOUSLY APPROVED BORROW LOCATION.
9. SITE RESTORATION AND PREPARATION SHALL BE SUBSIDIARY TO THE PROJECT.



INDEX TO DRAWINGS

SHEET NO.	DESCRIPTION
1	TITLE SHEET
2	STORM SEWER LINES
3	STORM SEWER DETAILS

APPROVED AS NOTED
BY CITY ENGINEER OF WICHITA

STORM SEWERS VRH 4/2/01

NOTE TO CONTRACTOR

INSPECTION AND TESTING FOR THIS PROJECT IS TO BE PROVIDED BY A LICENSED CONSULTING ENGINEERING FIRM UNDER CONTRACT WITH THE OWNER/DEVELOPER. SAID INSPECTION TO BE IN ACCORDANCE WITH THE CITY OF WICHITA STANDARD CONSTRUCTION ENGINEERING PRACTICES AND CERTIFIED BY A LICENSED PROFESSIONAL ENGINEER. NO WORK SHALL BE PERFORMED IN DEDICATED EASEMENTS OR THE PUBLIC RIGHT-OF-WAY BY THE CONTRACTOR WITHOUT SUCH INSPECTION NOR SHALL ANY WORK BE COMMENCED IN DEDICATED EASEMENTS OR PUBLIC RIGHT-OF-WAY WITHOUT WRITTEN AUTHORIZATION BY THE CITY ENGINEER.



BENCHMARK

BM#1 "C" CUT IN TOP OF CURB 183 FEET EAST OF CENTER OF EAST SMH AT NORTHEAST CORNER OF LOT 10, BLOCK 1.
ELFV.=188.90 C.O.W. DATUM

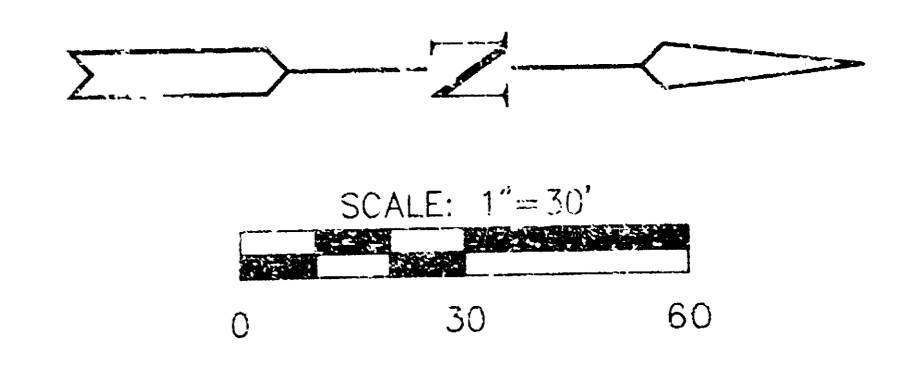
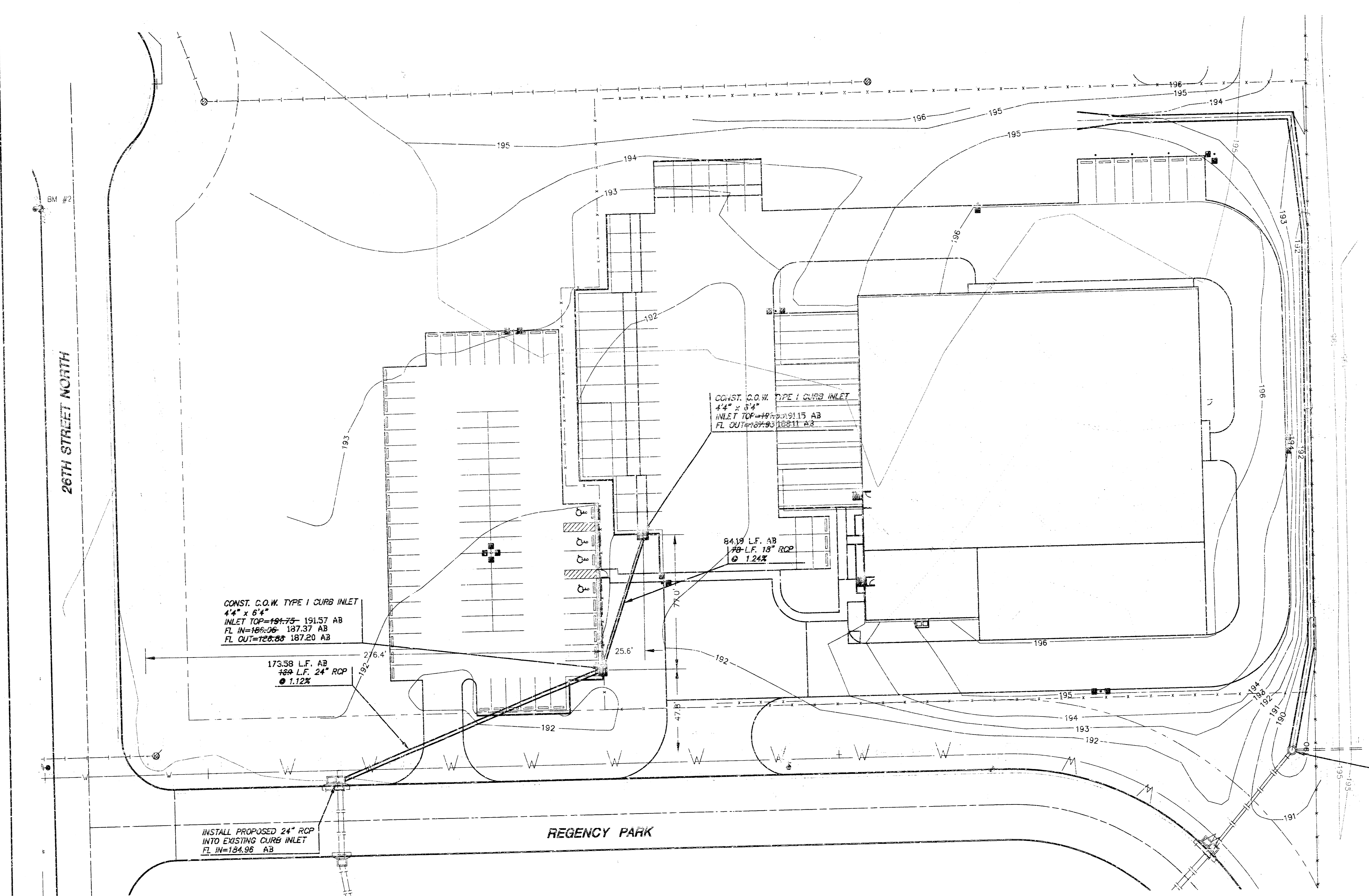
BM#2 CITY OF WICHITA BRASS DISK ON TOP OF CURB SOUTH SIDE OF 26TH STREET NORTH, 71.37' EAST OF CENTER OF CUL-DE-SAC.
ELEV.=191.56 C.O.W. DATUM
ELEV.=1378.96 USGS

MKEC
ENGINEERING CONSULTANTS
411 N. WEBB ROAD
WICHITA, KS. 67206
316-684-9600

FEDEX
PROJECT NAME

STORM WATER PLAN
SHEET TITLE

DESIGN BY:	DM	ASH
DRAWN BY:	DM	CHECKED BY:
DATE	APRIL 2001	01037DT
	DRAWING NAME	1 / 3
		SHEET / OF



CONST. C.O.W. TYPE I CURB INLET
 44" x 64"
 INLET TOP=191.75- 191.57 AB
 FL IN=186.06- 187.37 AB
 FL OUT=188.88- 187.20 AB

173.58 L.F. AB
 16" L.F. 24" RCP
 @ 1.12%

CONST. C.O.W. TYPE I CURB INLET
 44" x 64"
 INLET TOP=189.93- 191.15 AB
 FL OUT=187.93- 188.11 AB

84.19 L.F. AB
 16" L.F. 18" RCP
 @ 1.24%

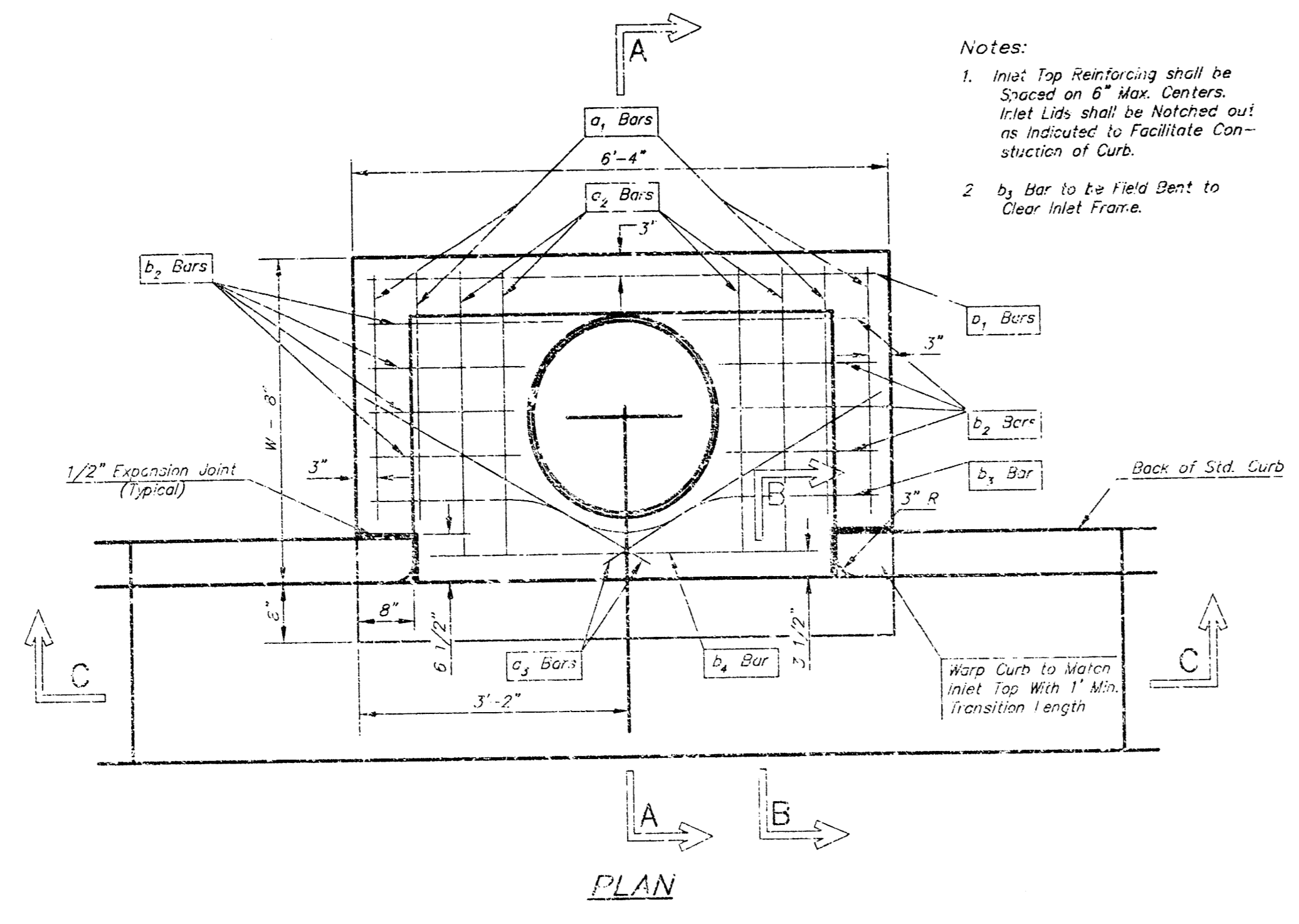
INSTALL PROPOSED 24" RCP
 INTO EXISTING CURB INLET
 FL IN=184.96 AB

ADJUST EXISTING SWS MANHOLE
 ELEV. TO 188.48- 190.05 AB
 REPLACE MANHOLE LID WITH A
 DEETEP 19.30 CATCH BASIN GRATE
 & FRAME OR EQUIVALENT.

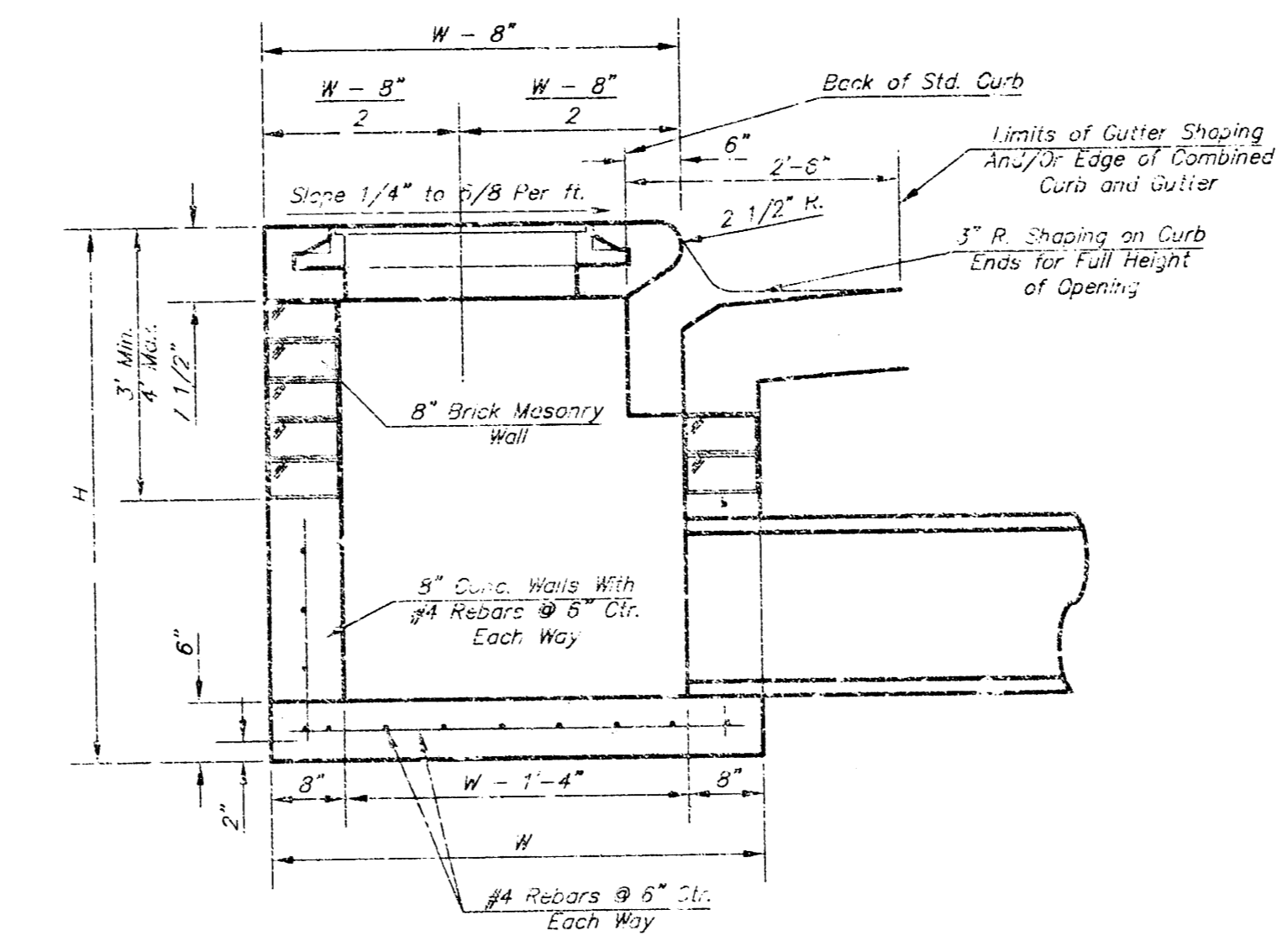
AS BUILT: AUGUST 2001



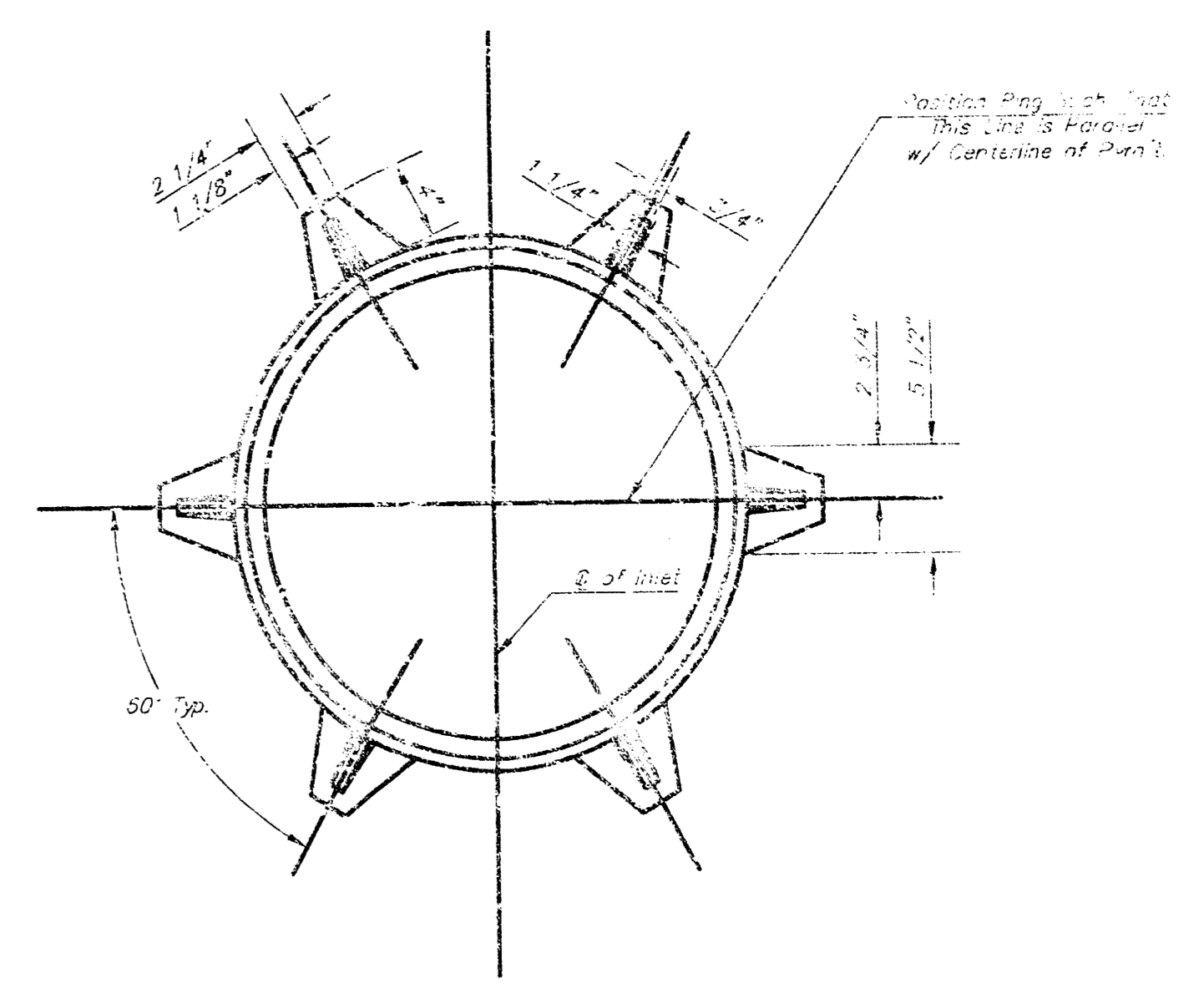
FEDEX PROJECT NAME		
STORM WATER PLANS SHEET TITLE		
ASH DESIGN BY	DM/DAG DRAWN BY	ASH CHECKED BY
APRIL 2001 DATE	01037D1 DRAWING NAME	2 / 3 SHEET / OF



Notes:
 1. Inset Top Reinforcing shall be Spaced on 8" Max. Centers. Inlet Lids shall be Notched out as Indicated to Facilitate Construction of Curb.
 2. b₂ Bar to be Field Bent to Clear Inlet Frame.

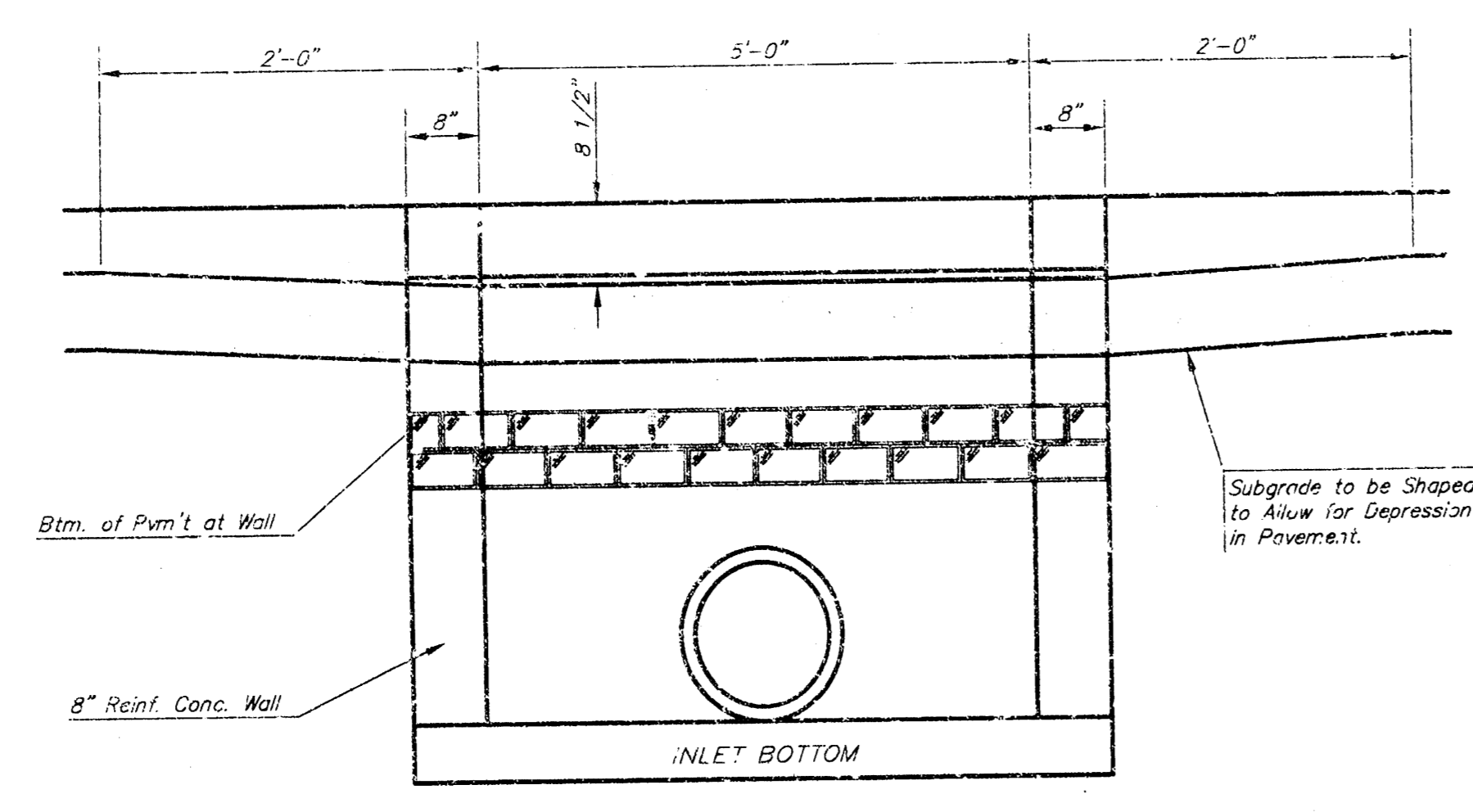


SECTION A-A

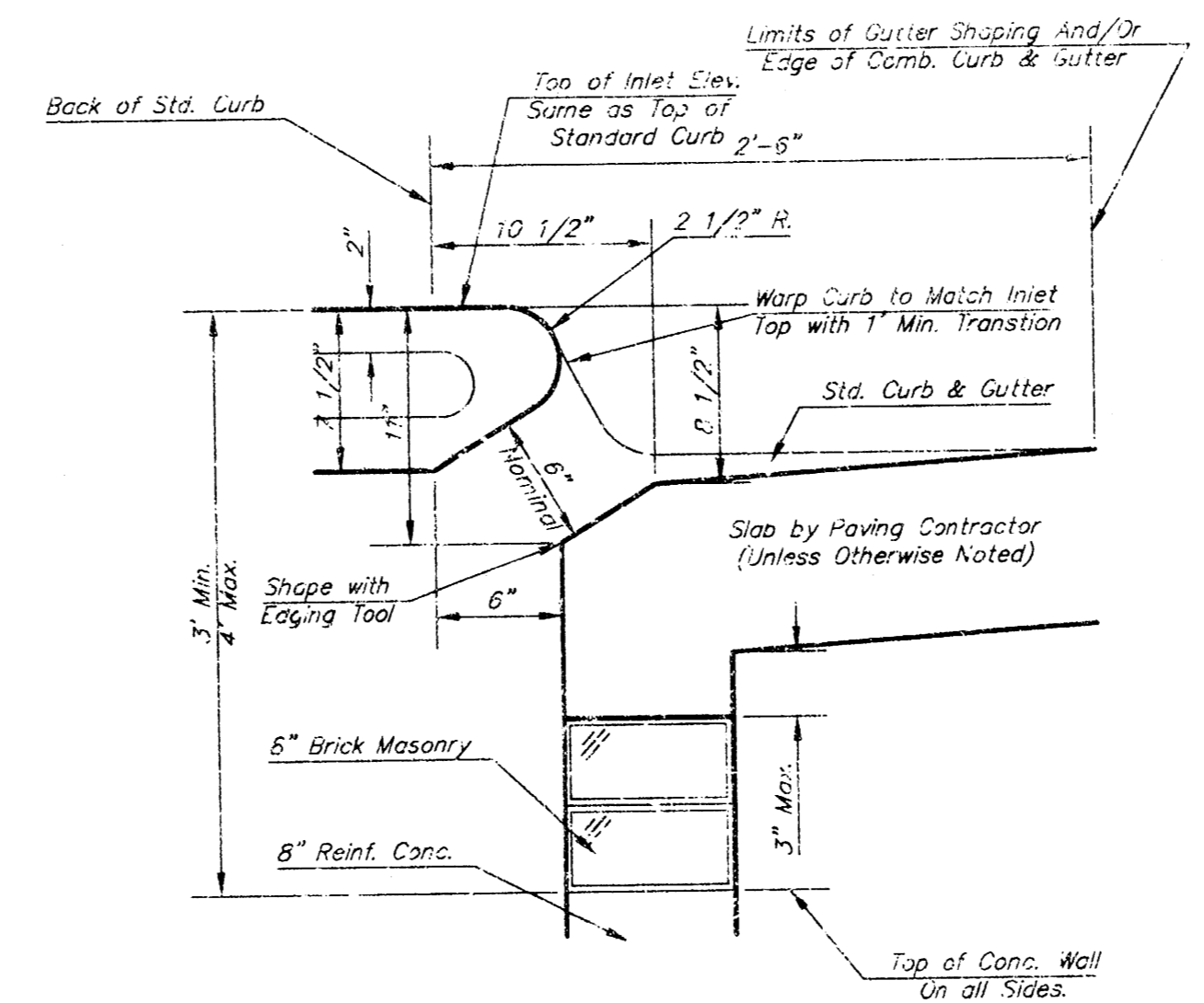


MANHOLE RING AND COVER

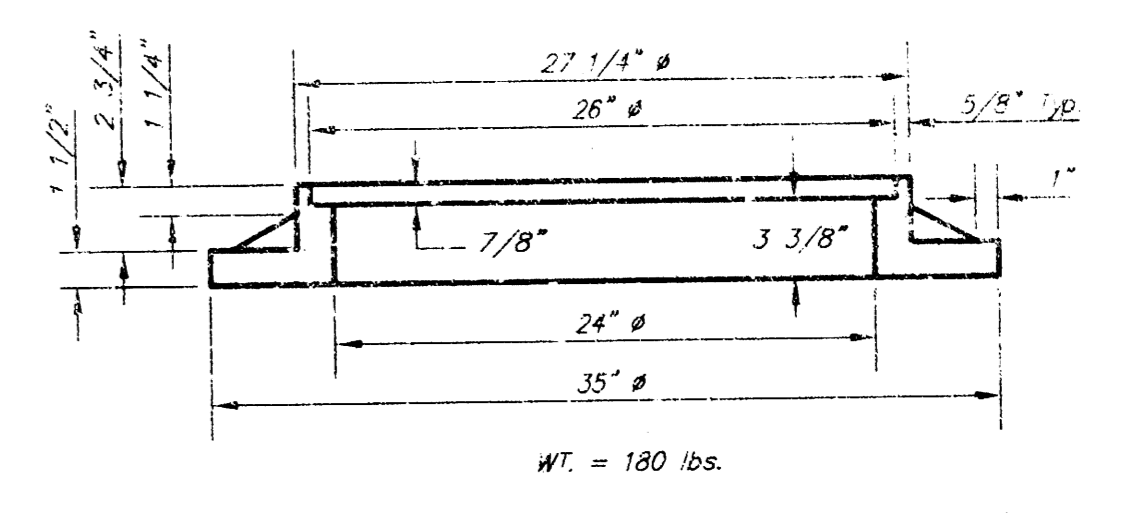
*See City of Wichita Standard Manhole Ring and Cover Detail Sheet for Cover Details to Be Used With Inlet Frame.



SECTION C-C



SECTION B-B



MANHOLE RING AND COVER

*See City of Wichita Standard Manhole Ring and Cover Detail Sheet for Cover Details to Be Used With Inlet Frame.

STEEL SCHEDULE

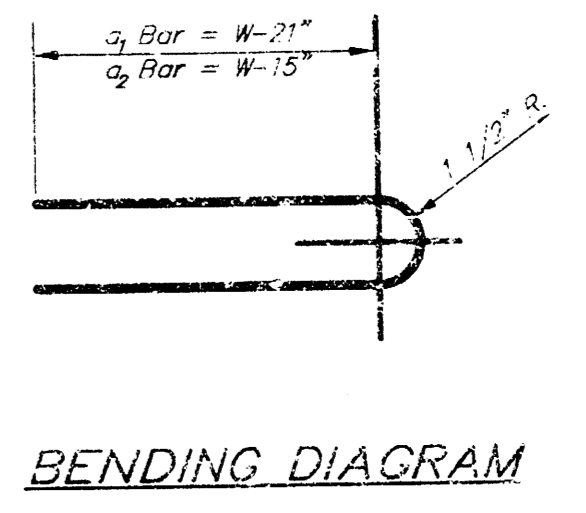
BAR	a ₁	a ₂	a ₃	a ₄	a ₅	a ₆	a ₇	a ₈	a ₉	a ₁₀	a ₁₁	a ₁₂	WT. LBS.
NUMBER	4	1	2	1	3	5	7	9	6	1	1		
SIZE	#4	#4	#4	#4	#4	#4	#4	#4	#4	#4	#4		
LENGTH	W-4'-4"	5'-7"	6'-7"	4'-0"	6'-1"	-	-	-	1'-8"	6'-2"	4'-8"	60±	
	W-5'-4"	7'-7"	8'-7"	5'-0"	-	-	-	-	1'-8"	6'-2"	4'-8"	81±	
	W-6'-4"	9'-7"	10'-7"	6'-0"	-	-	-	-	1'-8"	6'-2"	4'-8"	101±	
	W-7'-4"	11'-7"	12'-7"	7'-0"	-	-	-	-	1'-8"	6'-2"	4'-8"	121±	
	W-8'-4"	13'-7"	14'-7"	8'-0"	-	-	-	-	1'-8"	6'-2"	4'-8"	141±	

Note: a₃ Bars to be Placed Approx. 2" Below Top of Inlet Cover.

STANDARD CURB INLET PRECAST TOPS

W	PRE-CAST TOP SIZE	PIPE SIZE	CU. YD. CONC.
4'-4"	3'-8" 6'-4" 7 1/2"	21" & SMALLER	0.38±
5'-4"	4'-8" 6'-4" 7 1/2"	24" & 30"	0.51±
6'-4"	5'-8" 6'-4" 7 1/2"	36" & 42"	0.64±
7'-4"	6'-8" 6'-4" 7 1/2"	48" & 54"	0.77±
8'-4"	7'-0" 6'-4" 7 1/2"	60" & 66"	0.90±

- GENERAL NOTES
- Concrete Inps to be installed on thin mortar cushion to insure full support along brick walls. Concrete Inps may be cast in place or precast. Concrete used for inlet construction shall be concrete pavement mix.
 - Contractor shall have the option of constructing 8" brick masonry walls between the concrete inlet base and top on this inlet when W-6'-4" and H-7'-0" or less.
 - Inlet invert shall be shaped with 8 sack sand mix concrete to create flow channels and to increase hydraulic efficiency such that the inlet will be self cleaning between all inlet and/or outlet pipes.
 - The ends of all pipes installed in inlets shall be cut off flush with the inside face of the inlet wall.



BENDING DIAGRAM

THE CITY OF WICHITA
 STANDARD TYPE 1 CURB INLET
 OPENING = 6" x 5'-0"

M. E. LINDBAK P.E. - CITY ENGINEER
 PROJECT NUMBER: 607/006
 SHEET NUMBER: 607/851

CITY ENGINEER'S OFFICE
 CITY HALL - 2ND FLOOR
 1601 NORTH STREETS
 WICHITA, KANSAS 67202
 (316) 261-4501
 (316) 261-4474 FAX

DATE: APR 01
 SHEET 3 OF 3