

**STORMWATER SEWER IMPROVEMENTS TO SERVE  
LOT 1, BLOCK 1  
FANTASY THIRD ADDITION  
(YMCA POND)**

Project Number  
**1170 PPS (807861)**  
Michael E. Lindebak, P.E., City Engineer

**BENCHMARK**

Cut "I" on top of hubward  
@ East side of 10'x3' RCB  
Elev. = 169.05 (City Datum)

**GENERAL NOTES**

1. Contractor will be required to provide notice to utility companies a minimum of twenty-four (24) hours prior to any excavation, as follows:

Kansas One-Call 687-2470

The Contractor must notify the following in case of an emergency:

Cablevision	262-4270
or	263-2061
K.P.L. Gas Service Company	383-8650
Kansas Gas & Electric Company	383-8600
Arkla Gas Company	942-8350
Southwestern Bell Telephone Company	1-571-2611
City of Wichita Water Department	268-4908
City of Wichita Sewer Department	268-4071

2. Exist utilities and their locations, as shown on the plans, represent the best information obtainable for design. Location information has been obtained from the various utility companies and is either from company record drawings or company-provided field locations. The Contractor will be required to work around existing utilities which do not conflict with proposed construction.

3. The Contractor to verify utility locations prior to construction of this project.

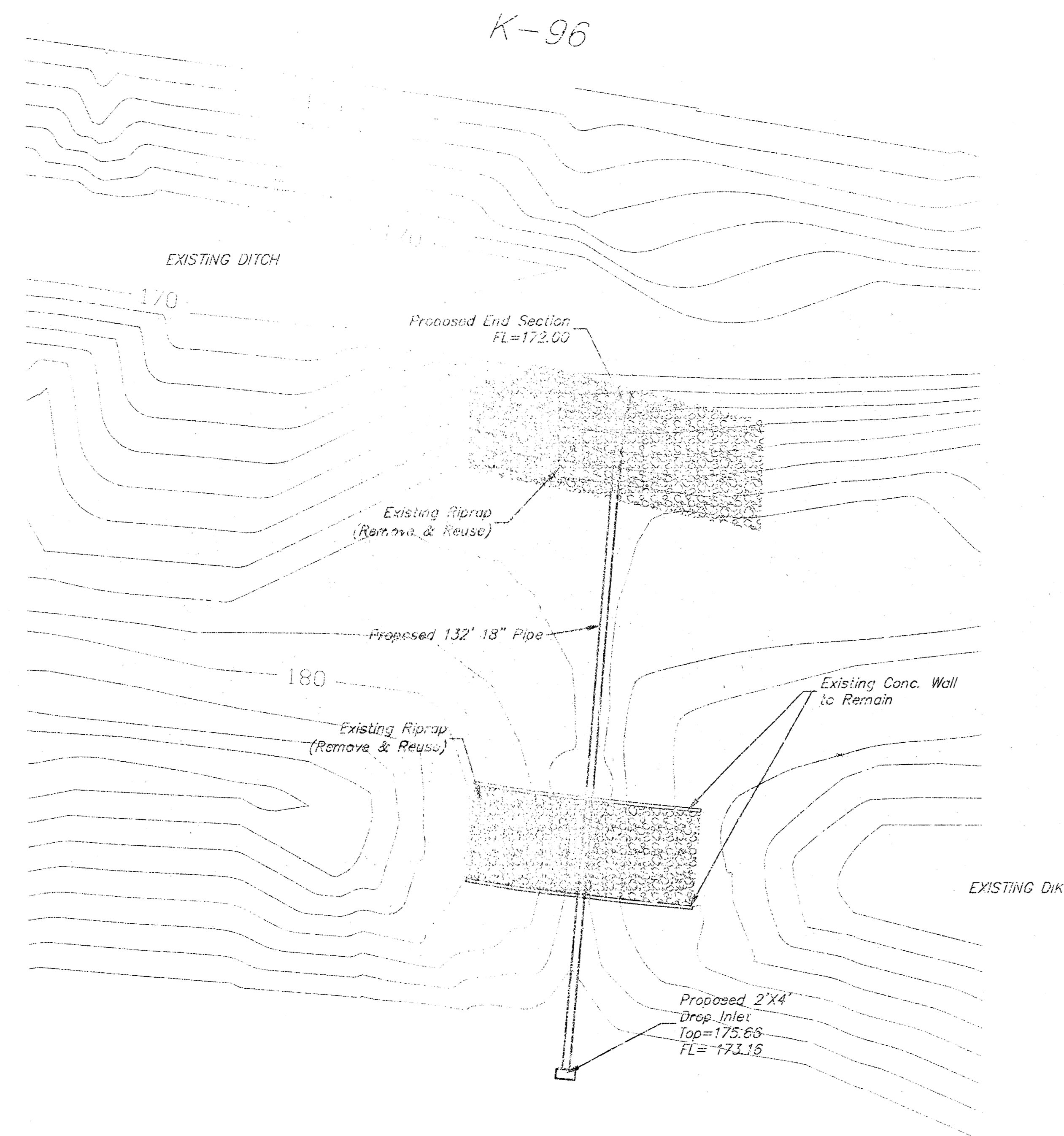
4. Utility service and installation shall be coordinated with the respective utility owners. Contacts are:

KC&E Gas	Steve Orth	261-6867
K.G. & E.	Miles Capps	261-6434
Wichita Water	Chuck Steven	268-4555
	Joe Botinely	268-4905
Southwestern Bell	Jim Tobin	268-2759

5. All areas disturbed by construction operations shall be seeded with rye grass at a rate of 300 lbs/acre immediately following construction in that area. Ground shall be prepared per City of Wichita specifications prior to seeding.

6. Traffic affected by the construction of this project shall be handled in accordance with the latest edition of the Manual on Uniform Traffic Control Devices.

7. All pipe shall be Contech Ultra Flo or approved equivalent unless otherwise noted.

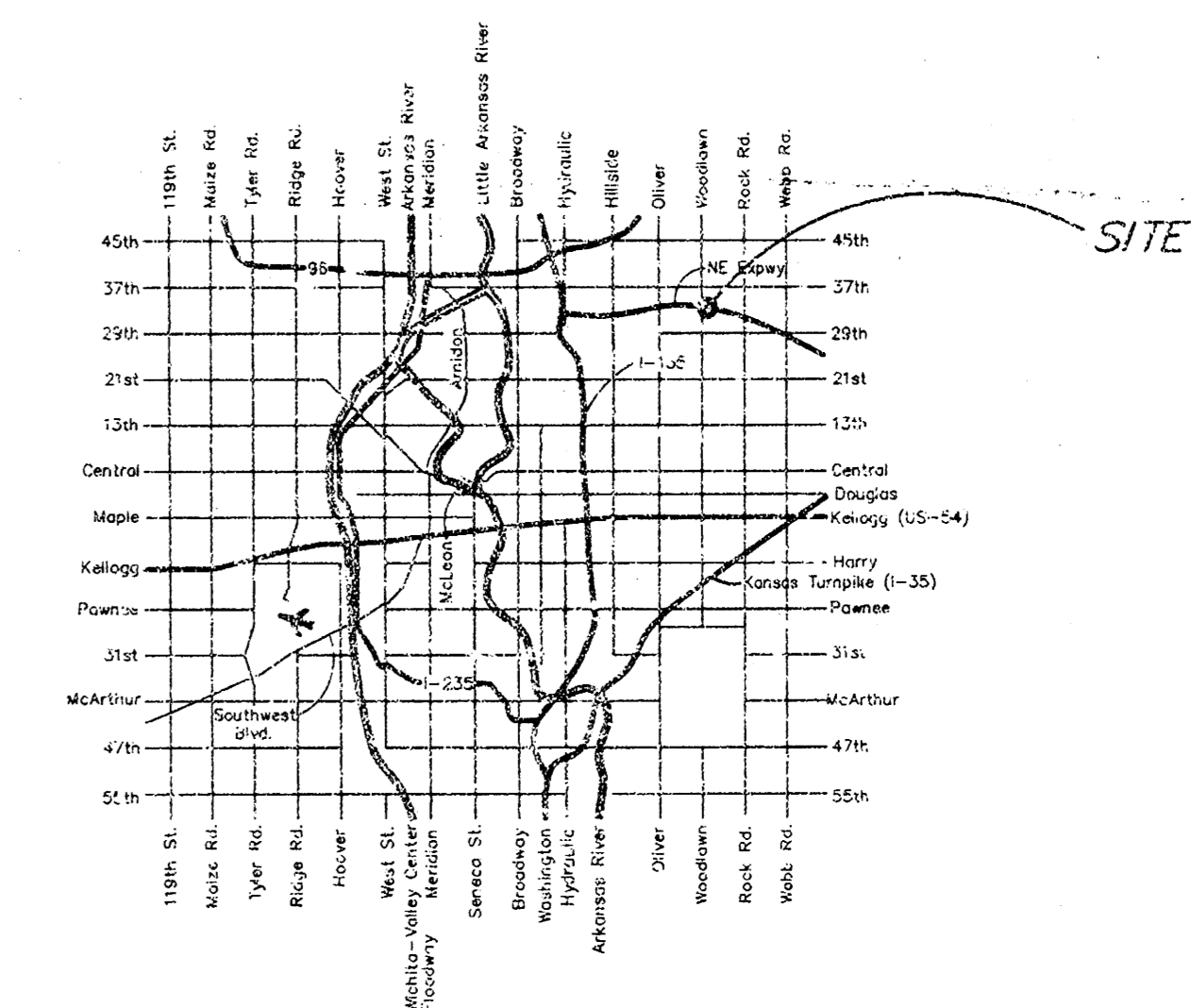


**INDEX**

- 1 Cover Sheet
- 2 Plan Sheet
- 3 Drop Inlet Detail Sheet



SCALE

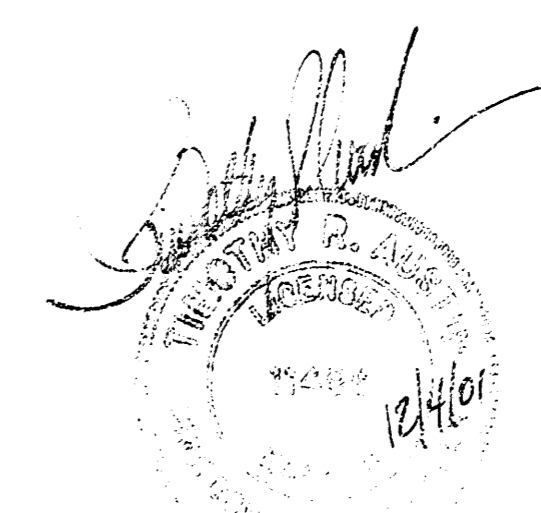


**LOCATION MAP**

APPROVED AS NOTED BY CITY ENGINEER OF WICHITA  
STORM SEWERS VRH 12/5/01

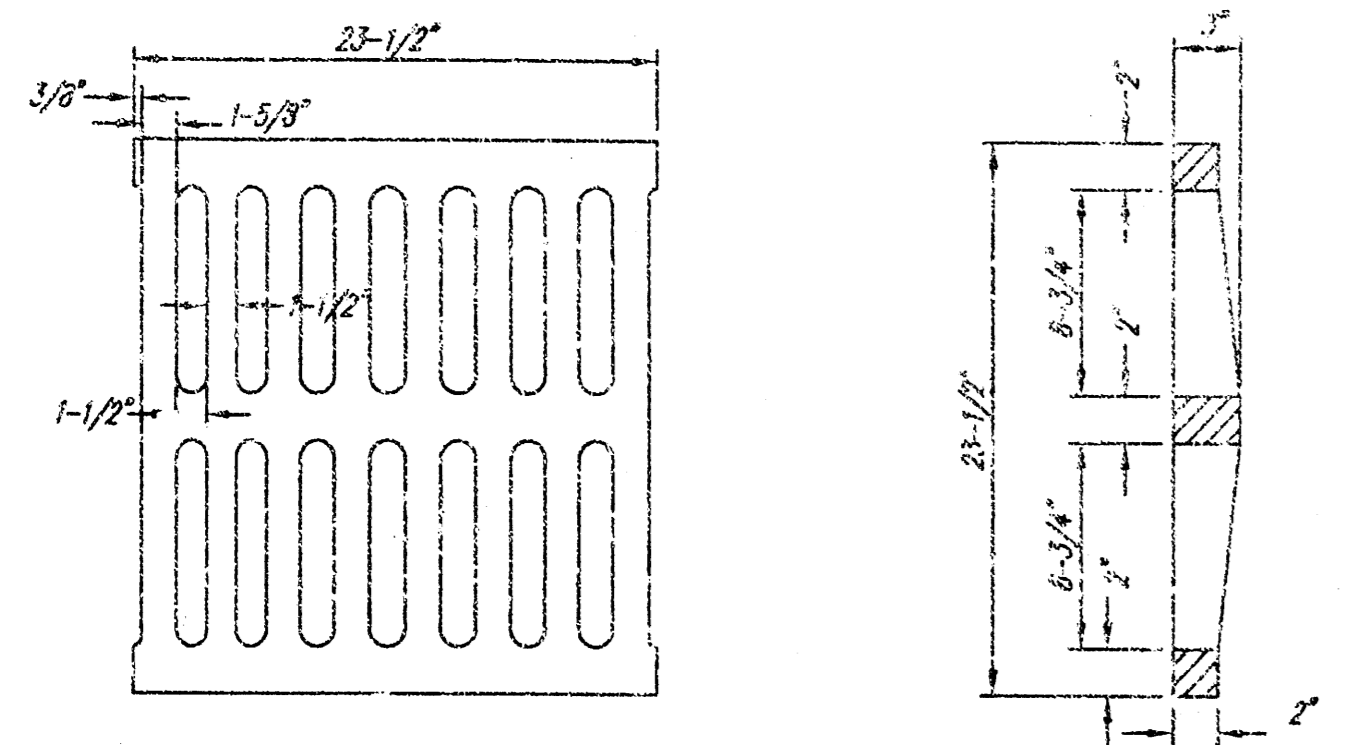
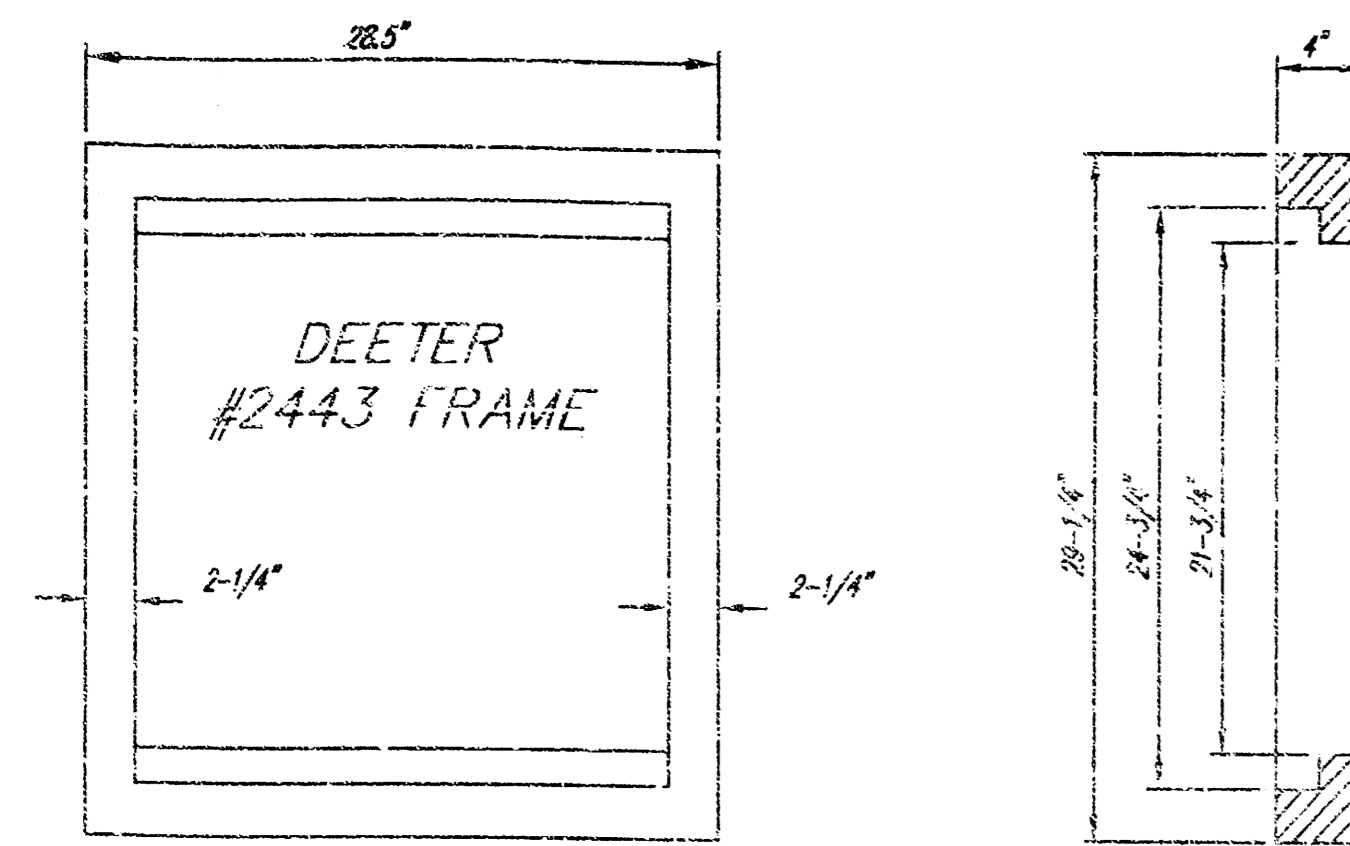
Inspection and testing for this project are to be provided by a Licensed Consulting Engineering Firm under contract with the Owner/Developer and inspection is to be in accordance with the City of Wichita standard construction engineering practices and certified by a Licensed Professional Engineer. No work shall be performed in dedicated easements or public right-of-way by the Contractor without such inspection nor shall work be commenced without written authorization by the City Engineer. All construction and materials shall comply with the City of Wichita Specifications and Standards (on file and available in the City Engineer's Office).

AS-BUILT  
Date: 12/15/01  
Signed: [Signature]



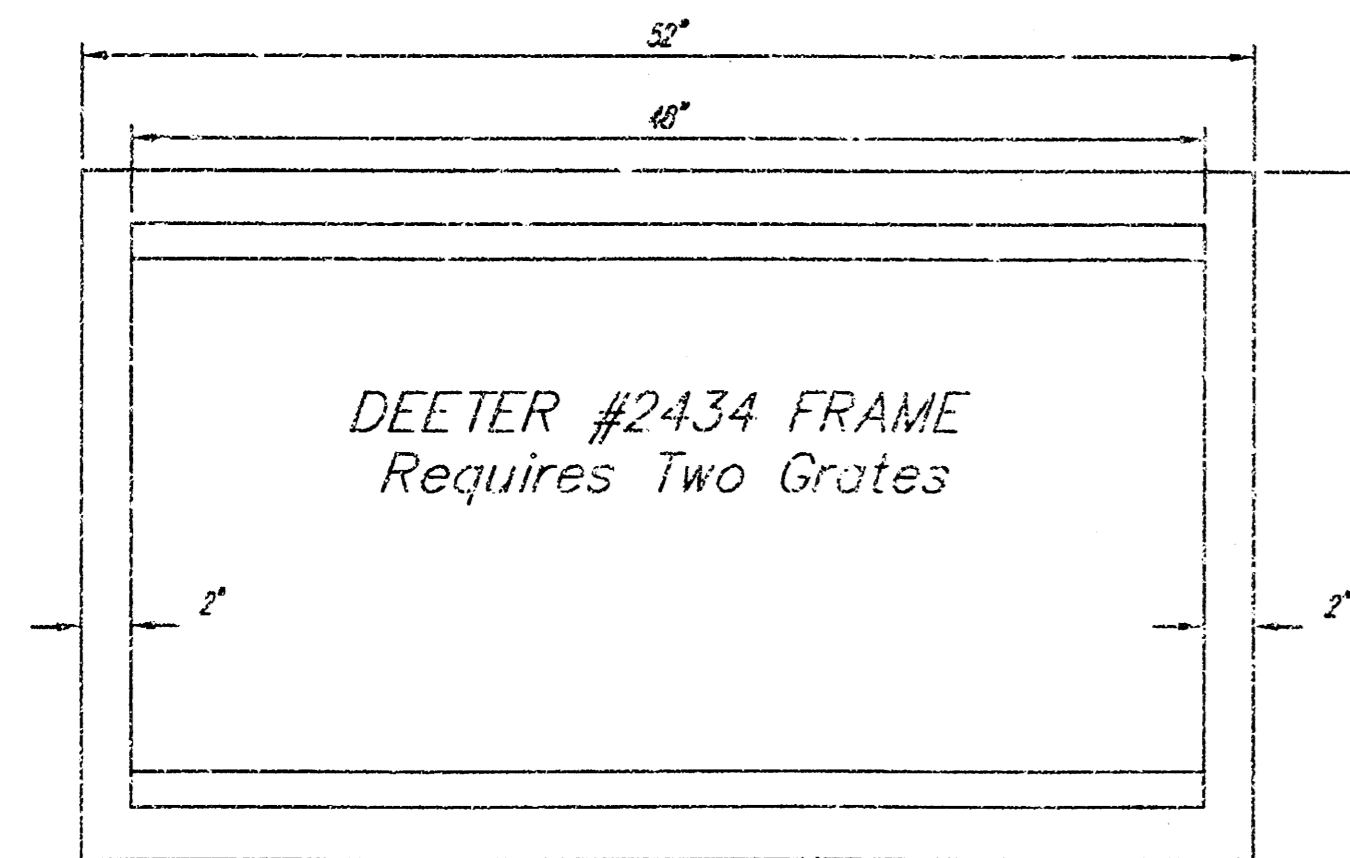
**MILLER P.A.**  
**ENGINEERING SERVICES**  
355 N. Wood, Suite 200 Wichita, KS 67202  
316/262-1281 fax: 316/262-6773





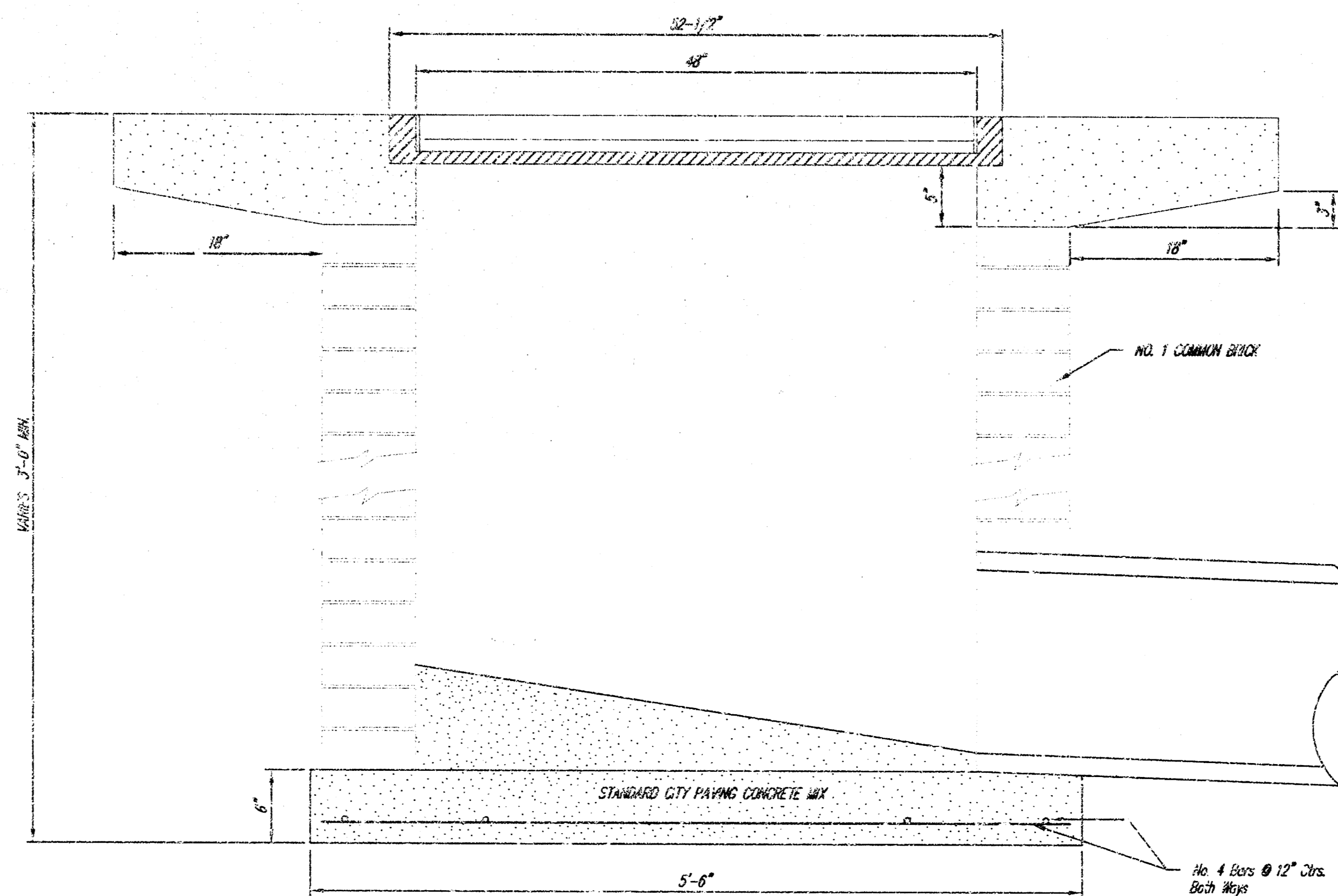
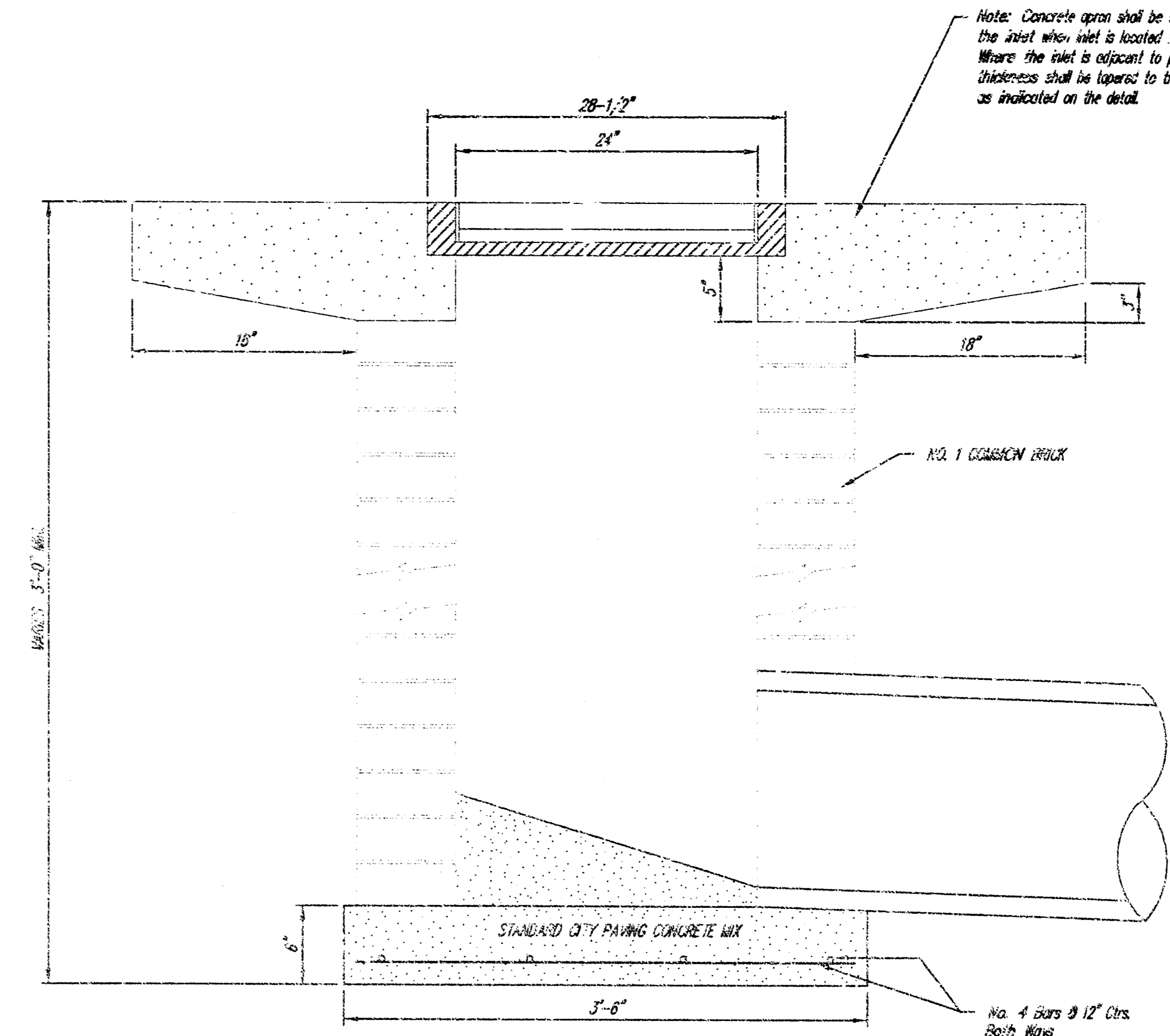
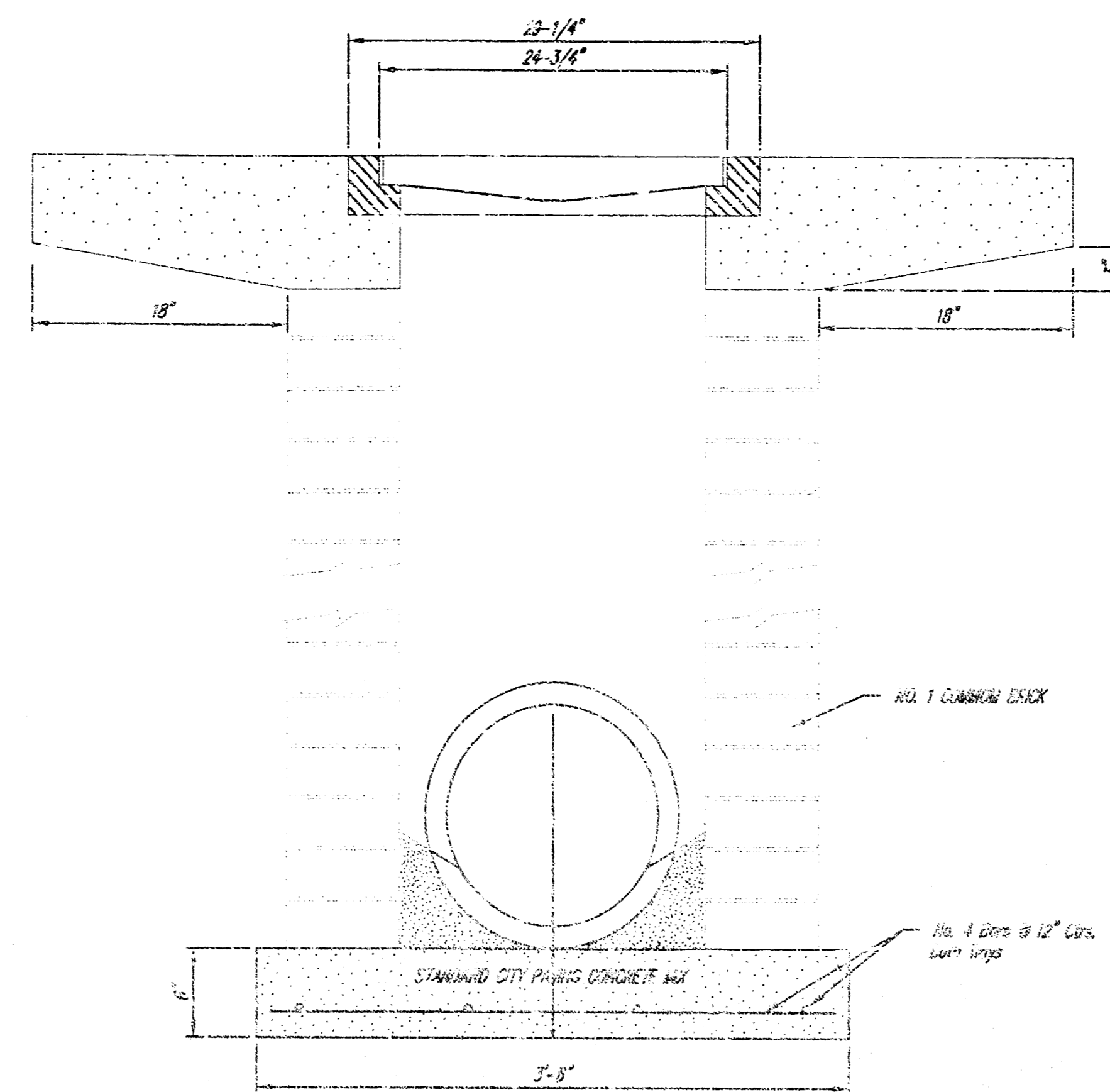
DEETER #2433 GRATE

24" x 24" Frame and Grate Detail



Double 24" x 24" Frame Detail

NOTE: Grates shall be imprinted on the top surface with "CITY OF WICHITA" using letters at least 1" in height. Other marking methods may be approved by the engineer.



<p>THE CITY OF WICHITA</p> <p>CITY ENGINEER'S OFFICE CITY HALL - SEVENTH FLOOR 152 NORTH MAIN STREET WICHITA, KANSAS 67202 (316) 268-4001 (316) 268-4114 FAX</p>	<p><b>DROP INLET</b> 2' X 2' 1/2' X 4'</p>	
	<p>M. E. LINDEBAK P.E. - CITY ENGINEER</p>	
	<p>PROJECT NUMBER 797 PPS 607861</p>	<p>INDEX CODE</p>
	<p>DATE MAR 96</p>	<p>SHEET 3 OF 3</p>