

McDonald's - Wichita, KS - DRAINAGE CALCULATIONS -- 5 YEAR RETURN INTERVAL

PT. No.	OVERLAND FLOW					SYSTEM FLOW																																				
	A' Acres	C'	K'	A* ² C* ² K	Time min.	Inlet Flow cfs	By-pass	Total Flow To Inlet	Total Area	A* ² C* ² K	Time min.	Inlet Flow cfs	System Discharge	Inlet Length	Max. Capacity	80% Capacity	Inlet Discharge	Inlet Bypass	Channel Type	Channel Shape	Channel Size	Channel Length	Channel Slope	Channel Flow Capacity	Full Vel.	Actual Vel.	Flow Depth	Flow Time	Upstream Invert	Downstream Invert	Upstream Crown	Downstream Crown	Upstream Depth Cover	Downstream Depth Cover	HWIC	HWOC	Control	HW Elev.	Ground Elev.			
1	0.26	0.87	1.00	2.23	5.00	6.47	1.46	0.00	1.46	0.28	0.23	5.00	6.47	1.46	20.00	50.00	48.00	1.46	0.00	CSP	Round	15"	23.00'	0.013	1.70%	2.68	8.45	6.88	6.13	0.44"	0.30min	167.80'	165.71'	169.00	166.96	2.75	3.34	0.66'	-3.31'	INLET	168.46	171.80
2	0.18	0.87	1.00	0.16	5.00	6.47	1.01	0.00	1.01	0.44	0.38	5.30	6.39	2.45	5.00	15.00	12.00	1.01	0.00	RCP	Round	36"	21.00'	0.013	0.57%	2.45	30.49	7.14	3.68	0.45"	0.05min	163.73'	163.61'	166.73	166.61	5.57	5.57	0.65'	-0.12'	INLET	164.38	172.50
3	1.45	0.87	1.00	1.26	5.00	6.47	8.16	0.00	8.16	1.45	1.28	5.00	6.47	8.16	5.00	15.00	12.00	8.16	0.00	RCP	Round	18"	146.00'	0.013	1.00%	3.18	10.53	5.96	6.58	0.99"	0.41min	166.73'	165.27'	168.23	166.77	4.27	6.73	1.84'	-1.78'	INLET	168.57	172.50
4	0.09	0.87	1.00	0.08	5.00	6.47	0.51	0.00	0.51	0.09	0.08	5.00	6.47	0.51	27.00	81.00	84.80	0.51	0.00	CSP	Round	12"	13.00'	0.012	1.10%	0.51	4.08	5.17	3.53	0.24"	0.04min	168.50'	168.50'	169.50	169.36	3.90	4.14	0.40'	-1.32'	INLET	168.90	173.40
5	0.05	0.87	1.00	0.04	0.00	0.19	0.36	0.00	0.36	1.59	1.38	5.41	6.36	8.80	5.00	15.00	12.00	0.36	0.00	RCP	Round	18"	18.00'	0.013	1.00%	8.80	10.53	5.96	6.67	1.05"	0.05min	165.18'	165.00'	166.98	166.50	6.82	6.82	1.96'	0.39'	INLET	167.16	173.50

McDonald's - Wichita, KS - DRAINAGE CALCULATIONS - 100 YEAR RETURN INTERVAL

PT. No.	OVERLAND FLOW					SYSTEM FLOW																																				
	A' Acres	C'	K'	A* ² C* ² K	Time min.	Inlet Flow cfs	By-pass	Total Flow To Inlet	Total Area	A* ² C* ² K	Time min.	Inlet Flow cfs	System Discharge	Inlet Length	Max. Capacity	80% Capacity	Inlet Discharge	Inlet Bypass	Channel Type	Channel Shape	Channel Size	Channel Length	Channel Slope	Channel Flow Capacity	Full Vel.	Actual Vel.	Flow Depth	Flow Time	Upstream Invert	Downstream Invert	Upstream Crown	Downstream Crown	Upstream Depth Cover	Downstream Depth Cover	HWIC	HWOC	Control	HW Elev.	Ground Elev.			
1	0.26	0.87	1.24	0.26	5.00	10.32	2.68	0.00	2.68	0.26	0.26	5.00	10.32	2.68	20.00	50.00	48.00	2.68	0.00	CSP	Round	15"	23.00'	0.013	1.70%	2.68	8.45	6.88	6.13	0.44"	0.30min	167.80'	165.71'	169.00	166.96	2.75	3.34	0.66'	-3.31'	INLET	168.46	171.80
2	0.18	0.87	1.24	0.18	5.00	10.32	1.86	0.00	1.86	0.44	0.44	5.30	10.20	4.46	5.00	15.00	12.00	1.86	0.00	RCP	Round	36"	21.00'	0.013	0.57%	2.45	30.49	7.14	4.41	0.50"	0.05min	163.73'	163.61'	166.73	166.61	5.57	5.57	0.65'	-0.12'	INLET	164.38	172.50
3	1.45	0.87	1.24	1.45	5.00	10.32	14.97	0.00	14.97	1.45	1.45	5.00	10.32	14.97	5.00	15.00	12.00	14.97	0.00	RCP	Round	18"	146.00'	0.013	1.00%	3.18	10.53	5.96	8.47	1.49"	0.41min	166.73'	165.27'	168.23	166.77	4.27	6.73	3.75'	-2.82'	INLET	168.57	172.50
4	0.09	0.87	1.24	0.09	5.00	10.32	3.93	0.00	3.93	0.09	0.09	5.00	10.32	3.93	27.00	81.00	84.80	0.51	0.00	CSP	Round	12"	13.00'	0.012	1.10%	0.51	4.08	5.17	4.21	0.32"	0.04min	168.50'	168.50'	169.50	169.36	3.90	4.14	0.56'	-1.05'	INLET	168.90	173.40
5	0.05	0.87	1.24	0.05	0.00	12.93	0.65	0.00	0.65	1.59	1.59	5.41	10.16	16.15	5.00	15.00	12.00	0.65	0.00	RCP	Round	18"	18.00'	0.013	1.00%	16.15	10.53	5.96	9.14	1.49"	0.05min	165.18'	165.00'	166.98	166.50	6.82	6.82	4.32'	1.73'	INLET	169.50	173.50

SPECIAL SITE DETAIL PLAN AND DRAINAGE CALCULATIONS

GENERAL NOTES

1. MCDONALD'S ROAD SIGN AND BASE ARE BY THE SIGN CONTRACTOR. CONDUIT AND WIRING ARE BY THE GENERAL CONTRACTOR.
2. BASES, ANCHOR BOLTS, CONDUIT, AND WIRING FOR ALL OTHER SIGNS ARE BY THE GENERAL CONTRACTOR.
3. 3/4" EMPTY CONDUIT TO LOCATIONS SHOWN AS LOT PERIMETER FOR LOT LIGHTING IS BY THE GENERAL CONTRACTOR. LIGHT FIXTURES, BASES, POLES, CONDUIT, AND WIRING ARE BY THE OWNER/OPERATOR.
4. BASES FOR FLAGPOLES ARE BY THE GENERAL CONTRACTOR. ANCHOR BOLTS ARE BY THE FLAGPOLE SUPPLIER.
5. PROPRIETARY UTILITIES ARE SHOWN IN SCHEMATIC ONLY. EXACT LOCATIONS SHALL BE DETERMINED TO ALLOW FOR THE MOST ECONOMICAL INSTALLATION.
6. THE CONTRACTOR SHALL COORDINATE WITH ALL UTILITY COMPANIES TO DETERMINE EXACT POINT OF SERVICE CONNECTION AT EXISTING UTILITY WELLS TO THE BUILDING ELECTRICAL AND PLUMBING DRAWINGS FOR UTILITY SERVICE ENTRANCE LOCATIONS, SIZES, AND DEPTHS.
7. ALL ELEVATIONS SHOWN ARE IN REFERENCE TO THE BENCHMARK AND MUST BE VERIFIED BY THE GENERAL CONTRACTOR AT GROUND BREAK.
8. FINISH GRADE AND CURB ELEVATIONS SHALL BE AT ARRIVE FROM ADJACENT.
9. ALL LANDSCAPE AREAS SHALL BE MOVED TO BE BELOW TOP OF ALL BASES AND FINISH GRADE. FINISH GRADING, LANDSCAPING, AND "SPRINKLER" SYSTEMS ARE BY THE OWNER/OPERATOR.
10. LOT LIGHTING CONCRETE FOOTINGS TO COORDINATE WITH THE SIGN MANUFACTURER'S RECOMMENDATIONS FOR THIS PARTICULAR SITE.
11. REFER TO SHEET SD-1 THRU SD-5 FOR ALL APPLICABLE SITE DETAILS.
12. PROVIDE REEPPLES OR CURBS AT ALL LANDSCAPE AREAS LOCATIONS COORDINATE WITH MCDONALD'S PROJECT MANAGER.

PAVING SPECIFICATION
(MINIMUM 4" TOTAL COMPACTED ASPHALT THICKNESS)

PAVING SHALL CONSIST OF 8" FULL DEPTH ASPHALTIC CONCRETE (BASE COURSE - 2" LIFTS, 2" SURFACE COURSE) PAYMENT TO MATCH CITY STATE SPECIFICATIONS. ALL FILL TO BE PLACED ON SITE. CITY STATE SPECIFICATIONS. ALL FILL TO BE PLACED IN CONTROLLED AREAS. ALL FILL SHALL BE FREE OF ORGANIC MATERIAL AND PLACED IN CONTROLLED AREAS. ALL FILL SHALL BE COMPACTED TO 98% MAX. DRY DENSITY ASTM D-1556 (USE FINE JUMP R). MOISTURE CONTENT SHALL BE WET OF OPT. PAVEMENT SECTIONS SHALL BE COMPACTED TO 97% OF THE MATERIALS MAX. DENSITY ASTM D-1556. G.C. SHALL PROVIDE 3/4" ANCHOR BOLTS IN AVOIDANCE WITH PAVES. AN ALTERNATE OF 3" REIN. P.C.C. IN AVOIDANCE WITH PAVES. ALL WORK IN THE R.O.W. AREAS SHALL MEET CITY STATE SPECIFICATIONS.

MCDONALD'S ENGINEER RESERVES THE RIGHT TO REQUEST A COMPARISON TEST FOR A CONE SAMPLE. IF TESTS PROVE CORRECT PER ABOVE SPECIFICATIONS, TESTS WILL BE AT THE EXPENSE OF MCDONALD'S, OTHERWISE, G.C. WILL BE CHARGED.

LOT LIGHTING RECOMMENDATION

SECURITY LIGHTING SYSTEMS
1085 JOHNSON DRIVE, BUFFALO GROVE, IL 60039
MODEL: #ASB-1000MH-DE-MT LAMP TP-1000 MH POLE HT-22'0"
LOT LIGHT POLES TO BE MOUNTED ON 2" CONC. BASES. ALL LOCATIONS TO BE FIELD VERIFIED BY MCDONALD'S PROJ. MGR.
NOTE: ELECTRICAL CONTRACTOR TO CIRCUIT LOT LIGHTING AS NOTED.

PARKING INFORMATION

TOTAL SPACES	35 SPACES	9' x 20' @ 60'
43	6 SPACES	9' x 20' @ 90'
	2 HDOP. SPACES	9' x 20' @ 60'
	SPACES	x @ -

UTILITY INFORMATION

UTILITY	SIZE	TYPE	LOCATION
SANITARY SEWER	8"	GRAVITY	SOUTH PROPERTY LINE
WATER	8"		NORTH PROPERTY LINE
SIGN-SEWER	36" RCP		EAST PROPERTY LINE
ELECTRIC		O.H.	SOUTH SIDE KELLOGG
GAS	2"		NORTH PROPERTY LINE

SURVEY INFORMATION

PREPARED BY: BAUGHMAN COMPANY, P.A.
ENGINEERING, SURVEYING & PLANNING
315 ELLIS
WICHITA, KS 67211
316-262-7271

DATE: JANUARY 23, 2002

LEGEND

—S—	SANITARY SEWER	—G—	GAS
—W—	WATER	—L—	LOT LIGHT
—ST—	STORM SEWER	—E—	EXISTING ELEVATION (76.5)
—E—	ELECTRIC	—P—	PROPOSED ELEVATION (172.0)

PLAN SCALE: 1" = 20'

STREET ADDRESS
11989 EAST KELLOGG

CITY	WICHITA	STATE	KANSAS
COUNTY	SEDGWICK	LOCATION CODE NUMBER	KC-15/322
REGIONAL DWG. NO.			

STATUS PRELIMINARY
DATE FEBRUARY 2002
BY J. DAVIS

PLAN CHECKED G. BROWN
AS-BUILT G. BROWN

REGIONAL DWG. NO. KC-15/322
LOCATION CODE NUMBER KC-15/322
C5

CONTRACTOR MCDONALD'S
ADDRESS 11885 SHELBY BLVD., OVERLAND PARK, KS 66209
PHONE (913) 241-2200
FAX (913) 241-2200
EMAIL info@mc.com

DATE JANUARY 23, 2002
BY J. DAVIS
CHECKED G. BROWN
APPROVED J. DAVIS

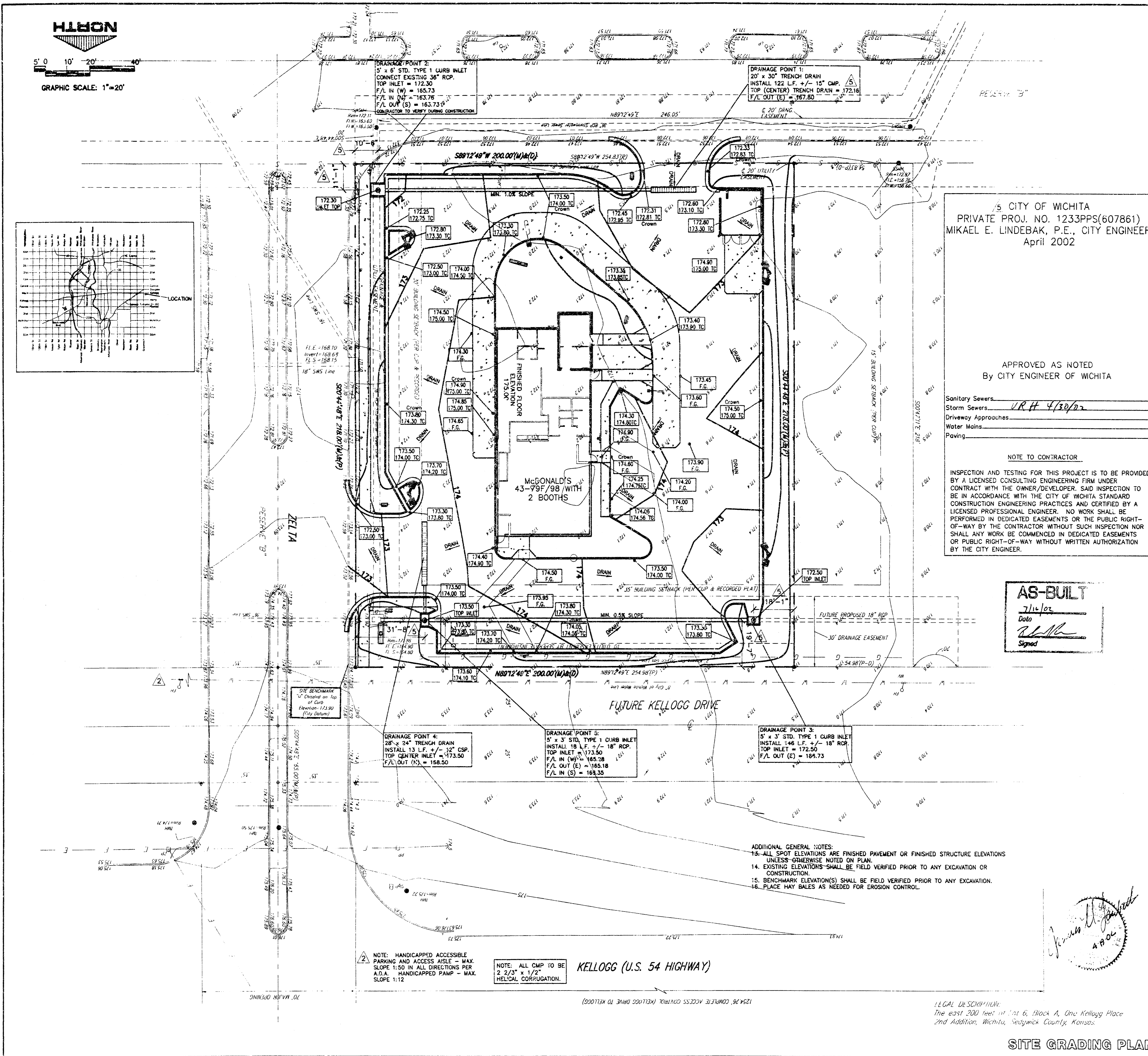
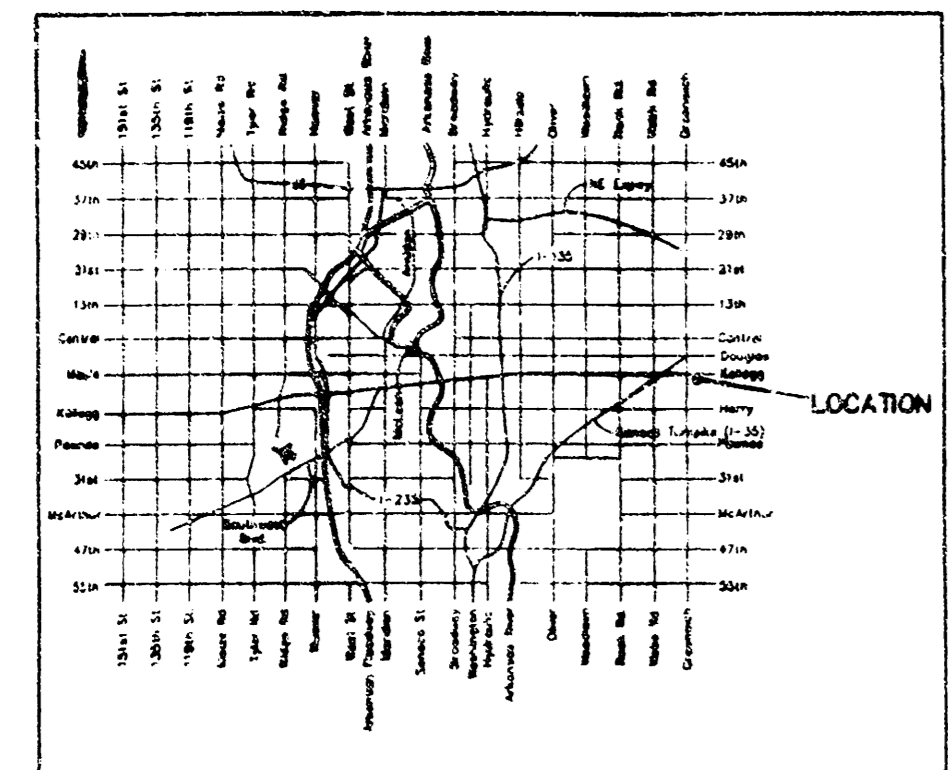
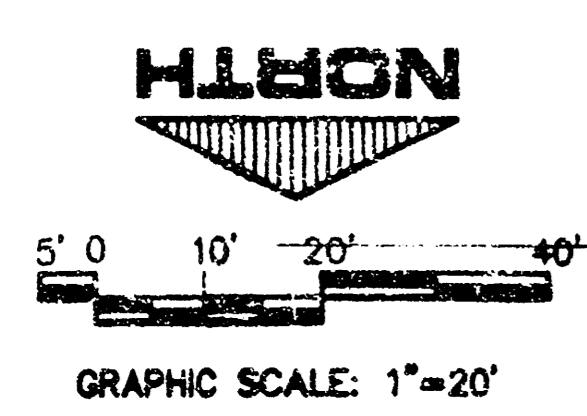
CO-SIGN SIGNATURES

DATE JANUARY 23, 2002
BY J. DAVIS
CHECKED G. BROWN
APPROVED J. DAVIS

CONTRACTOR MCDONALD'S
ADDRESS 11885 SHELBY BLVD., OVERLAND PARK, KS 66209
PHONE (913) 241-2200
FAX (913) 241-2200
EMAIL info@mc.com

PROJECT # C20266

F:\MCDONALDS\WICHITA\Site\plane\vdg\sd1.dwg Thu Apr 18 15:55:15 2002 J. Davis



CITY OF WICHITA
 PRIVATE PROJ. NO. 1233PPS(607861)
 MIKAEL E. LINDEBAK, P.E., CITY ENGINEER
 April 2002

APPROVED AS NOTED
 By CITY ENGINEER OF WICHITA

Sanitary Sewers: URH 4/20/02
 Storm Sewers: URH 4/20/02
 Driveway Approaches:
 Water Mains:
 Paving:

NOTE TO CONTRACTOR
 INSPECTION AND TESTING FOR THIS PROJECT IS TO BE PROVIDED BY A LICENSED CONSULTING ENGINEERING FIRM UNDER CONTRACT WITH THE OWNER/DEVELOPER. SAID INSPECTION TO BE IN ACCORDANCE WITH THE CITY OF WICHITA STANDARD CONSTRUCTION ENGINEERING PRACTICES AND CERTIFIED BY A LICENSED PROFESSIONAL ENGINEER. NO WORK SHALL BE PERFORMED IN DEDICATED EASEMENTS OR THE PUBLIC RIGHT-OF-WAY BY THE CONTRACTOR WITHOUT SUCH INSPECTION NOR SHALL ANY WORK BE COMMENCED IN DEDICATED EASEMENTS OR PUBLIC RIGHT-OF-WAY WITHOUT WRITTEN AUTHORIZATION BY THE CITY ENGINEER.

AS-BUILT
 7/14/02
 Date
[Signature]
 Signed

ADDITIONAL GENERAL NOTES:
 13. ALL SPOT ELEVATIONS ARE FINISHED PAVEMENT OR FINISHED STRUCTURE ELEVATIONS UNLESS OTHERWISE NOTED ON PLAN.
 14. EXISTING ELEVATIONS SHALL BE FIELD VERIFIED PRIOR TO ANY EXCAVATION OR CONSTRUCTION.
 15. BENCHMARK ELEVATIONS(S) SHALL BE FIELD VERIFIED PRIOR TO ANY EXCAVATION.
 16. PLACE HAY BALES AS NEEDED FOR EROSION CONTROL.

NOTE: HANDICAPPED ACCESSIBLE PARKING AND ACCESS AISLE - MAX. SLOPE 1:50 IN ALL DIRECTIONS PER A.D.A. HANDICAPPED PAMP - MAX. SLOPE 1:12
 NOTE: ALL CMP TO BE 2 2/3" x 1/2" HELICAL CORRUGATION.

KELLOGG (U.S. 54 HIGHWAY)

LEGAL DESCRIPTION:
 The east 200 feet of Lot 6, Block A, One Kellogg Place and Addition, Wichita, Sedgwick County, Kansas.

SITE GRADING PLAN

GENERAL NOTES		REV	DATE	DESCRIPTION	BY	ISSUE REF
1	MCDONALD'S ROAD SIGN AND BASE ARE BY THE SIGN CONTRACTOR UNLESS OTHERWISE NOTED BY THE GENERAL CONTRACTOR.	1	6/27/02	CITY COMMENTS - SEAL LEGAL RESERVES, PLANS	SMF	
2	BASES FOR SIGN BOLTS, CROWNS, AND WIRING FOR ALL OTHER SIGNS ARE BY THE GENERAL CONTRACTOR.	2	5/18/02	MISCELLANEOUS AND CITY REQUESTED REVISIONS	SMF	
3	3/4" EMPTY CONDUIT TO LOCATIONS SHOWN AT THE LOT PERIMETER FOR LOT LIGHTING IS BY THE GENERAL CONTRACTOR. LIGHTING FIXTURES, BASES, POLES, LENGTH, AND WIRING ARE BY THE OWNER/OPERATOR.	3	5/18/02	ELIMINATE SIDE-DRIVE DRIVE-THRU	JAO	
4	BASES FOR FLAGPOLES ARE BY THE GENERAL CONTRACTOR. ANCHOR BOLTS ARE BY THE FLAGPOLE SUPPLIER.	4	4/18/02	MISCELLANEOUS AND CITY REQUESTED REVISIONS	JAO	
5	PROPOSED UTILITIES ARE SHOWN IN SCHEMATIC ONLY. EXACT LOCATIONS SHALL BE DETERMINED TO ALLOW FOR THE MOST ECONOMICAL INSTALLATION.	5	4/18/02	MISCELLANEOUS CITY REQUESTED REVISIONS	JAO	
6	THE CONTRACTOR SHALL COORDINATE WITH ALL UTILITY COMPANIES TO DETERMINE EXACT POINTS OF SERVICE CONNECTION AT EXISTING UTILITIES PRIOR TO THE BUILDING ELECTRICAL AND PLUMBING TRADES FOR UTILITY SERVICE ENTRANCE LOCATIONS, SIZES, AND DEPTHS.					
7	ALL ELEVATIONS SHOWN ARE IN REFERENCE TO THE BENCHMARK AND MUST BE VERIFIED BY THE GENERAL CONTRACTOR AT DRIVE/BREAK.					
8	WALK AND CURB ELEVATIONS SHALL BE 6" ABOVE FINISH PAVEMENT.					
9	ALL LANDSCAPE AREAS SHALL BE MOVED GRADUALLY TO BE BELOW TOP OF ALL BENCHES AND CURBS. PLANTING, LANDSCAPING, AND SPRINKLER SYSTEMS ARE BY THE OWNER/OPERATOR.					
10	EXISTING CONCRETE FINISHES TO CONFORM WITH THE SOILS REPORT RECOMMENDATIONS FOR THIS PARTICULAR SITE.					
11	WALK TO SLEETS SD-1 THIRD SD-S FOR ALL APPLICABLE SLEETS.					
12	PROVIDE WITHIN THE SD-CURBS AT ALL LANDSCAPE AREAS LOCATIONS COORDINATE WITH MCDONALD'S PROJECT MANAGER.					
PAVING SPECIFICATION (MINIMUM 4" TOTAL COMPACTED ASPHALT THICKNESS)						
PAVING SHALL CONSIST OF 8" FULL DEPTH ASPHALT CONCRETE (4" BASE COURSE + 2 LIFTS, 2" SURFACE COURSE). PAVEMENT TO MATCH CITY/STATE SPECIFICATIONS. ALL FILL TO BE PLACED ON SITE. SHALL BE FREE OF ORGANIC MATERIAL AND PLACED IN CONTROLLED LIFTS NOT TO EXCEED 6" LOOSE. ALL FILL PLACED SHALL BE COMPACTED TO 95% MAX. DRY DENSITY ASTM D-698 (98% FOR UPPER 6"). MOISTURE CONTENT SHALL BE WET OF OPT. PAVEMENT SECTIONS SHALL BE COMPACTED TO 97% OF THE MATERIALS MAX. DENSITY ASTM D-698. G.C. SHALL PROVIDE AN ALTERNATE OF 7" HDP P.C.C. IN ACCORDANCE WITH PAGES 8-12, JOB SPEC. 01020005 BY TERRACON. ALL WORK IN THE R.O.W. AREAS SHALL MEET CITY/STATE SPECIFICATIONS.						
MCDONALD'S ENGINEER RESERVES THE RIGHT TO REQUEST A COMPACTION TEST AND/OR A CORE SAMPLE. IF TESTS PROVE CORRECT, PER ABOVE SPECIFICATION, TESTS WILL BE AT THE EXPENSE OF MCDONALD'S. OTHERWISE, G.C. WILL BE CHARGED.						
LOT LIGHTING RECOMMENDATION						
SECURITY LIGHTING SYSTEMS 1085 JOHNSON DRIVE, BUFFALO GROVE, IL 60089 MODEL: ASB-100CMH-DB-MT LAMP TP-1000 MH POLE HT-22'0" LOT LIGHT POLES TO BE MOUNTED ON 2" CONC. BASES. ALL LOCATIONS TO BE FIELD VERIFIED BY MCDONALD'S PROJ. MGR. NOTE: ELECTRICAL CONTRACTOR TO CIRCUIT LOT LIGHTING AS NOTED.						
PARKING INFORMATION						
TOTAL SPACES	32 SPACES	9' x 20' @ 60'				
43	6 SPACES	9' x 20' @ 90'				
	2 HDCCP SPACES	9' x 20' @ 60'				
	3 SPACES	8' x 20' @ 60'				
UTILITY INFORMATION						
	SIZE	TYPF	LOCATION			
SANITARY SEWER	8"	GRAVITY	SOUTH PROPERTY LINE			
WATER	8"		NORTH PROPERTY LINE			
STORM SEWER	36"	RCP	EAST PROPERTY LINE			
ELECTRIC		O.H.	SOUTH SIDE KELLOGG			
GAS	2"		NORTH PROPERTY LINE			
SURVEY INFORMATION						
PREPARED BY: SAUGHMAN COMPANY, P.A. ENGINEERING, SURVEYING, & PLANNING 315 ELLIS WICHITA KS 67211 316-262-7771						
DATE: JANUARY 23, 2002						
LEGEND						
SANITARY SEWER	---	---	---	GAS	---	---
WATER	---	---	---	LOT LIGHT	---	---
STORM SEWER	---	---	---	EXISTING ELEVATION	(76.5)	
ELECTRIC	---	---	---	PROPOSED ELEVATION	(77.5)	
PLAN SCALE: 1" = 20'						
STREET ADDRESS						
11989 EAST KELLOGG						
CITY	WICHITA	STATE	KANSAS	STATUS	DATE	BY
				PRELIMINARY	04FEB02	JAO
COUNTY	SEDGWICK	PLAN CHECKED	08FEB02	GB		
REGIONAL DWG. NO.	LOCATION CODE NUMBER	AS-BUILT				
	KC-15/322	C2				
CBL PROJECT # 022006						

MCDONALD'S

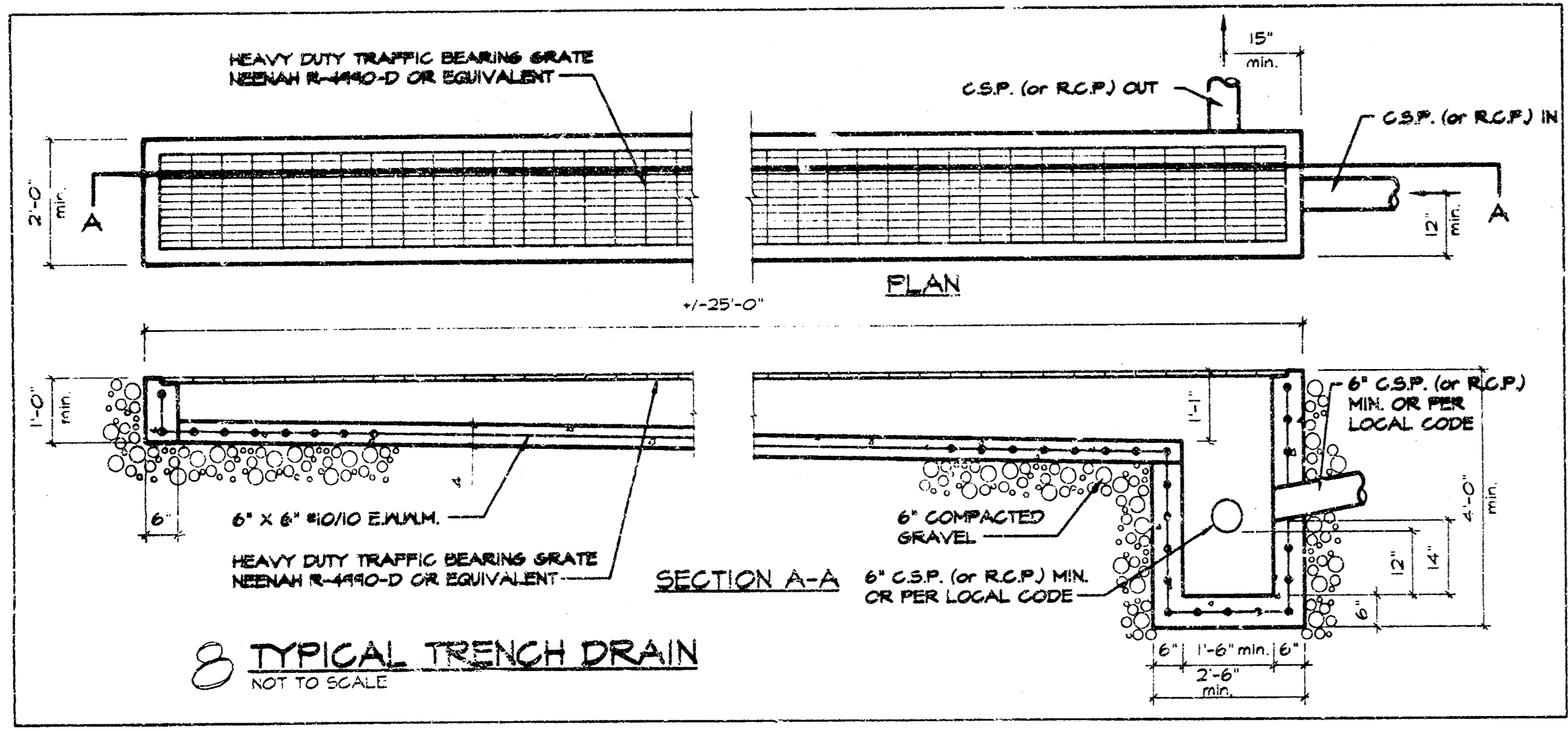
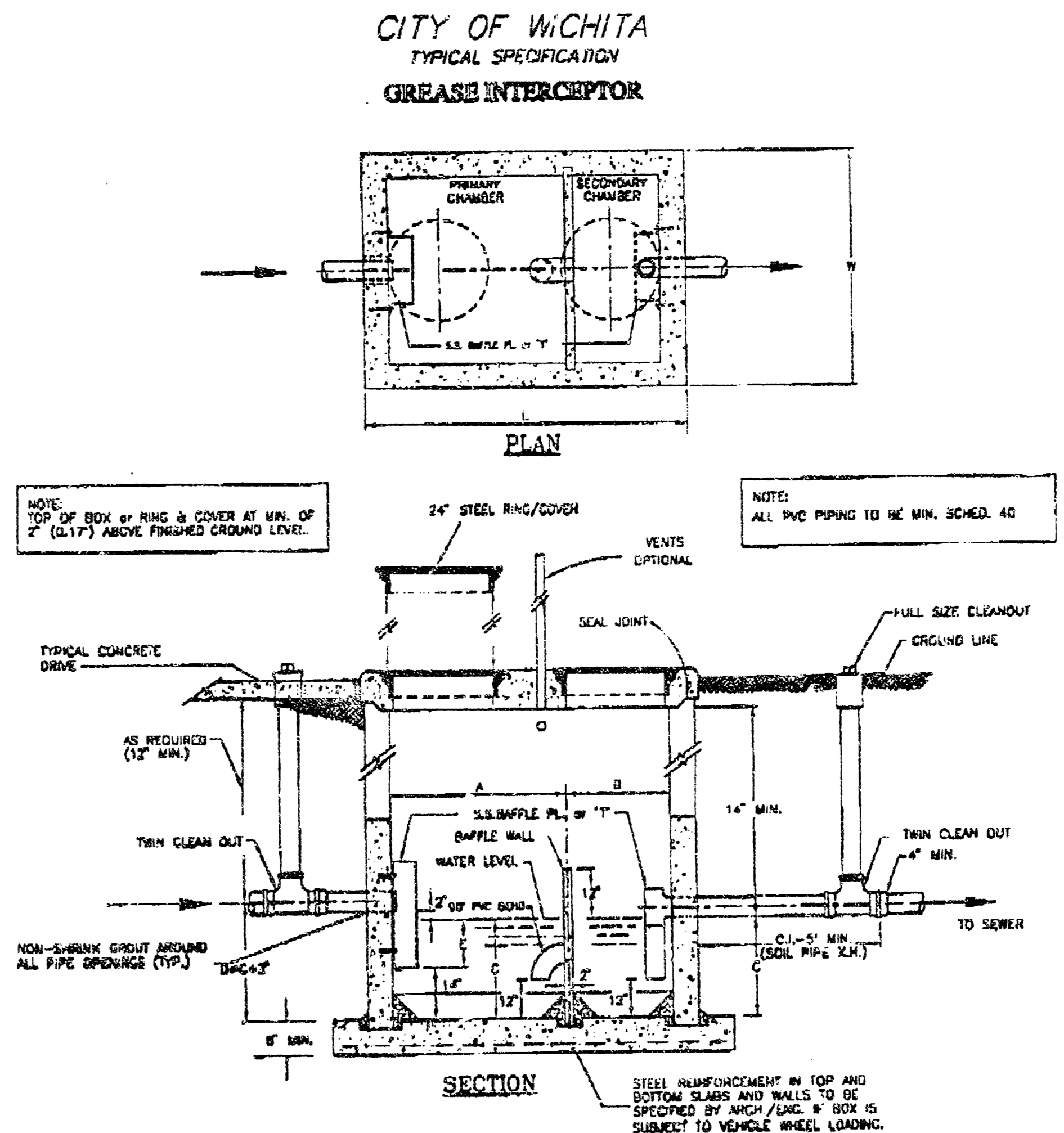
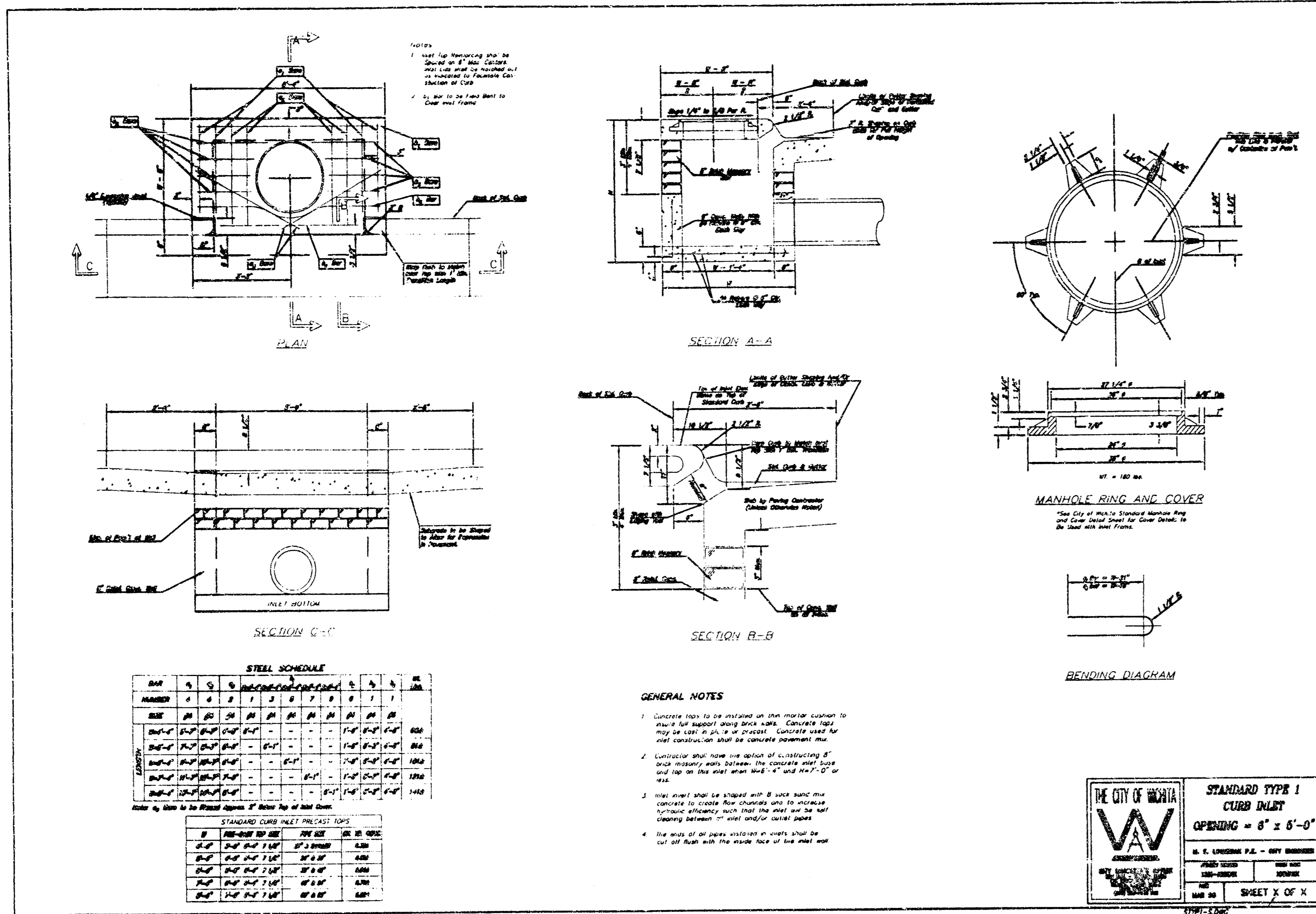
DATE: _____
 SIGNATURE (2 REQUIRED): _____
 REGIONAL MGR: _____
 CONSULTING: _____
 OPERATIONS: _____
 PLAN CHECKER: _____
 AS-BUILT: _____

CO-SIGN SIGNATURES:
 CONTRACTOR: _____
 OWNER: _____

REGIONAL DWG. NO. _____
 LOCATION CODE NUMBER _____
 STATUS _____
 DATE _____
 BY _____

GREENWICH DWG Thu Apr 18 15:48:00 2002 J. Davis

18 11 01 11



**CITY OF WICHITA
WATER & SEWER DEPARTMENT
SYSTEM PLANNING & DEVELOPMENT
TEL. 318-368-4515
REVISED: 5-31-1995**

NO. OF FLOW (G.P.M.)	APPROX. DRAINAGE AREA (SQ. FT.)	NO. OF CONNECTIONS	NO. OF TRAPS
1	100	1	1
2	200	2	2
3	300	3	3
4	400	4	4
5	500	5	5
6	600	6	6
7	700	7	7
8	800	8	8
9	900	9	9
10	1000	10	10

McDonald's - Wichita, KS - DRAINAGE CALCULATIONS - 5 YEAR RETURN INTERVAL

PT. No.	OVERLAND FLOW					SYSTEM FLOW															STRUCTURE DESIGN																					
	A' Acres	C'	K'	A*P*CK	Time min.	Inlet Flow	Inlet Bypass	Total Flow To Inlet	Total Area	Σ A*P*CK	Time min.	Inlet Flow	Inlet Bypass	Total Flow To Inlet	Inlet Length	Max. Capacity	80% Capacity	Inlet Discharge	Inlet Bypass	Channel Type	Channel Shape	Channel Size	Channel Length	Channel Slope	Channel Flow	Channel Capacity	Full Vel.	Actual Vel.	Flow Depth	Flow Time	Upstream Invert	Downstream Invert	Upstream Crown	Downstream Crown	Upstream Depth Cover	Downstream Depth Cover	HWIC	HWOC	Control	HW Elev.	Ground Elev.	
1	0.28	0.87	1.00	0.23	5.00	6.47	1.46	0.00	1.46	0.23	5.00	6.47	1.46	20.03	60.00	48.00	1.46	0.00	CSP	Round	15"	123.00'	0.013	1.70%	1.46	8.45	6.88	5.17	0.35'	0.30min	167.80'	165.71'	169.05	166.96	2.75	5.34	0.66'	-3.21'	INLET	166.46	171.90	
2	0.18	0.87	1.00	0.16	5.00	6.47	1.01	0.00	1.01	0.44	5.30	6.39	2.45	5.00	15.00	12.00	1.01	0.00	RCP	Round	36"	21.00'	0.013	0.57%	2.45	50.49	7.14	3.68	0.45'	0.05min	163.73'	163.61'	166.73	166.61	5.57	5.57	0.65'	-0.12'	INLET	164.38	172.30	
3	1.45	0.87	1.00	1.26	5.00	6.47	6.16	0.00	6.16	1.45	1.26	5.00	6.47	6.16	5.00	15.00	12.00	6.16	0.00	RCP	Round	18"	146.00'	0.013	1.00%	6.16	10.53	5.96	6.58	0.99'	0.41min	166.73'	165.27'	168.23	166.77	4.27	6.73	1.84'	1.78'	INLET	168.57	172.50
4	0.08	0.87	1.00	0.08	5.00	6.47	0.51	0.00	0.51	0.09	5.00	6.47	0.51	27.00	81.00	64.80	0.51	0.00	CSP	Round	12"	13.00'	0.012	1.10%	0.51	4.08	5.17	3.53	0.24'	0.04min	168.50'	168.36'	169.50	169.36	3.90	4.14	0.40'	-1.32'	INLET	168.90	173.40	
5	0.05	0.87	1.00	0.04	0.00	6.18	0.36	0.00	0.36	1.59	1.38	5.41	6.36	8.80	5.00	15.00	12.00	0.36	0.00	RCP	Round	18"	18.00'	0.013	1.00%	8.80	10.53	5.96	6.67	1.05'	0.05min	165.18'	165.00'	166.68	166.50	6.82	6.82	1.98'	0.39'	INLET	167.16	173.50

McDonald's - Wichita, KS - DRAINAGE CALCULATIONS - 100 YEAR RETURN INTERVAL

PT. No.	OVERLAND FLOW					SYSTEM FLOW															STRUCTURE DESIGN																					
	A' Acres	C'	K'	A*P*CK	Time min.	Inlet Flow	Inlet Bypass	Total Flow To Inlet	Total Area	Σ A*P*CK	Time min.	Inlet Flow	Inlet Bypass	Total Flow To Inlet	Inlet Length	Max. Capacity	80% Capacity	Inlet Discharge	Inlet Bypass	Channel Type	Channel Shape	Channel Size	Channel Length	Channel Slope	Channel Flow	Channel Capacity	Full Vel.	Actual Vel.	Flow Depth	Flow Time	Upstream Invert	Downstream Invert	Upstream Crown	Downstream Crown	Upstream Depth Cover	Downstream Depth Cover	HWIC	HWOC	Control	HW Elev.	Ground Elev.	
1	0.28	0.87	1.24	0.26	5.00	10.32	2.68	0.00	2.68	0.28	5.00	10.32	2.68	20.00	60.00	48.00	2.68	0.00	CSP	Round	15"	123.00'	0.013	1.70%	2.68	8.45	8.88	6.13	0.48'	0.30min	167.80'	165.71'	169.05	166.96	2.75	5.34	0.85'	-2.82'	INLET	168.75	171.90	
2	0.18	0.87	1.24	0.18	5.00	10.32	1.86	0.00	1.86	0.44	5.30	10.20	4.49	5.00	15.00	12.00	1.86	0.00	RCP	Round	36"	21.00'	0.013	0.57%	4.49	50.49	7.14	4.41	0.60'	0.05min	163.73'	163.61'	166.73	166.61	5.57	5.57	0.65'	-0.11'	INLET	164.62	172.30	
3	1.45	0.87	1.24	1.45	5.00	10.32	14.97	0.00	14.97	1.45	5.00	10.32	14.97	5.00	15.00	12.00	14.97	0.00	RCP	Round	18"	146.00'	0.013	1.00%	14.97	10.53	5.96	8.47	1.49'	0.41min	163.73'	165.27'	168.23	166.77	4.27	6.73	3.75'	7.28'	OUTLET	174.01	172.50	
4	0.08	0.87	1.24	0.08	5.00	10.32	0.93	0.00	0.93	0.09	5.00	10.32	0.93	27.00	81.00	64.80	0.93	0.00	CSP	Round	12"	13.00'	0.012	1.10%	0.93	4.08	5.17	4.21	0.32'	0.04min	168.50'	168.36'	169.50	169.36	3.90	4.14	0.56'	1.05'	OUTLET	169.55	173.40	
5	0.05	0.87	1.24	0.05	0.00	12.93	0.65	0.00	0.65	1.59	1.59	5.41	10.16	16.15	5.00	15.00	12.00	0.65	0.00	RCP	Round	18"	18.00'	0.013	1.00%	16.15	10.53	5.96	9.14	1.49'	0.05min	165.18'	165.00'	166.68	166.50	6.82	6.82	4.32'	1.73'	INLET	169.50	173.50

**SPECIAL SITE DETAIL PLAN
AND DRAINAGE CALCULATIONS**

GENERAL NOTES

1. MEDDONALD'S ROAD SIGNS AND MARKING ARE BY THE SIGN CONTRACTOR. COUSH AND MARKING ARE BY THE GENERAL CONTRACTOR.
2. BASES, ANCHOR BOLTS, CONDUIT, AND WIRING FOR ALL OTHER SIGNS ARE BY THE GENERAL CONTRACTOR.
3. 3/4" EMPTY CONDUIT TO LOCATIONS SHOWN AT THE LOT PER-METER FOR LOT LIGHTING IS BY THE GENERAL CONTRACTOR. LIGHTING FIXTURES, BASES, POLES, CONDUIT, AND WIRING ARE BY THE OWNER/OPERATOR.
4. BASES FOR FLAGPOLES ARE BY THE GENERAL CONTRACTOR. ANCHOR BOLTS ARE BY THE FLAGPOLE SUPPLIER.
5. PROPOSED UTILITIES ARE SHOWN IN SCHEMATIC ONLY. EXISTING LOCATIONS SHALL BE DETERMINED TO ALLOW FOR THE MOST ECONOMICAL INSTALLATION.
6. THE CONTRACTOR SHALL COORDINATE WITH ALL UTILITY COMPANIES TO DETERMINE EXACT POINT OF SERVICE CONNECTION AT EXISTING UTILITY. REFER TO THE BUILDING ELECTRICAL AND PLUMBING SPECIFICATIONS FOR UTILITY SERVICE ENTRANCE LOCATIONS, SIZES, AND DEPTHS.
7. ALL ELEVATIONS SHOWN ARE IN REFERENCE TO THE BENCHMARK AND MUST BE VERIFIED BY THE GENERAL CONTRACTOR AT GROUND/BREAK.
8. FINISH WALK AND CURB ELEVATIONS SHALL BE 6" ABOVE FINISH PAVEMENT.
9. ALL LANDSCAPE AREAS SHALL BE ROUGH GRADED TO 6" BELOW TOP OF ALL WALKS AND CURBS. FINISH GRADING, LANDSCAPING, AND SPRINKLER SYSTEMS ARE BY THE OWNER/OPERATOR.
10. LOT LIGHTING CONCRETE FOOTINGS TO COORDINATE WITH THE SIGNS. RECOMMENDATIONS FOR THIS PARTICULAR SITE.
11. REFER TO SCHEDULES SD-1 THRU SD-5 FOR ALL APPLICABLE SITE DETAILS.
12. PROVIDE WEEDPROOF OR CURBS AT ALL LANDSCAPE AREAS LOCATIONS. COORDINATE WITH MEDDONALD'S PROJECT MANAGER.

PAVING SPECIFICATION
(MINIMUM 4" TOTAL COMPACTED ASPHALT THICKNESS)

PAVING SHALL CONSIST OF 8" FULL DEPTH ASPHALTIC CONCRETE (BY BASE COURSE) - 2 LIFTS, 2" SURFACE COURSE. PAVEMENT TO MATCH CITY/STATE SPECIFICATIONS. ANY FILL TO BE PLACED ON SITE SHALL BE FREE OF ORGANIC MATERIAL AND PLACED IN CONTROLLED LIFTS NOT TO EXCEED 6" LOOSE. ALL FILL PLACED SHALL BE COMPACTED TO 90% MAX. DRY DENSITY ASTM D-698 (95% FOR UPPER 6"). MOISTURE CONTENT SHALL BE WET OF OPT. PAVEMENT SECTIONS SHALL BE COMPACTED TO 97% OF THE MATERIALS MAX. DENSITY ASTM D-698. G.C. SHALL PROVIDE AN ALTERNATE OF 7" RENT. P.C.C. IN ACCORDANCE WITH PAGES 9-12. CODE: 01025005 BY TERRACON. ALL WORK IN THE R.O.W. AREAS SHALL MEET CITY/STATE SPECIFICATIONS.

MEDDONALD'S ENGINEER RESERVES THE RIGHT TO REQUEST A COMPACTION TEST AND/OR A CORE SAMPLE. IF TESTS PROVE CORRECT, PER ABOVE SPECIFICATION, TESTS WILL BE AT THE EXPENSE OF MEDDONALD'S. OTHERWISE, G.C. WILL BE CHARGED.

LOT LIGHTING RECOMMENDATION

SECURITY LIGHTING SYSTEMS
1085 JOHNSON DRIVE, BUFFALO GROVE, IL 60089
MODEL#ASB-1000MH-DB-MT LAMP TP-1000 MH POLE HT.22'0"
LOT LIGHT POLES TO BE MOUNTED ON 2" CONC. BASES. ALL LOCATIONS TO BE FIELD VERIFIED BY MEDDONALD'S PROJ. MGR.
NOTE: ELECTRICAL CONTRACTOR TO CIRCUIT LOT LIGHTING AS NOTED.

PARKING INFORMATION

TOTAL SPACES	35 SPACES	9' x 20' @ 60"
	6 SPACES	9' x 20' @ 90"
	2 HDQP. SPACES	9' x 20' @ 90"
	SPACES	x @

UTILITY INFORMATION

	SIZE	TYPE	LOCATION
SANITARY SEWER	8"	GRAVITY	SOUTH PROPERTY LINE
WATER	8"		NORTH PROPERTY LINE
STORM SEWER	36" RCP		EAST PROPERTY LINE
ELECTRIC	C.H.		SOUTH SIDE KELLOGG
GAS	2"		NORTH PROPERTY LINE

SURVEY INFORMATION

PREPARED BY: BAUGHMAN COMPANY, P.A.
ENGINEERING, SURVEYING, & PLANNING
315 ELLIS
WICHITA, KS 67211
316-262-7271

DATE: JANUARY 23, 2002

LEGEND

- SANITARY SEWER
- WATER
- STORM SEWER
- ELECTRIC
- GAS
- LOT LIGHT
- EXISTING ELEVATION (76.5)
- PROPOSED ELEVATION (72.0)

PLAN SCALE: 1" = 20'

STREET ADDRESS
11989 EAST KELLOGG

CITY WICHITA **STATE** KANSAS

COUNTY SEDGWICK

REGIONAL DWG. NO. KC-15/322

LOCATION CODE NUMBER C5

STATUS PRELIMINARY **DATE** 04/16/02

PLAN CHECKED 08/28/02

AS-BUILT

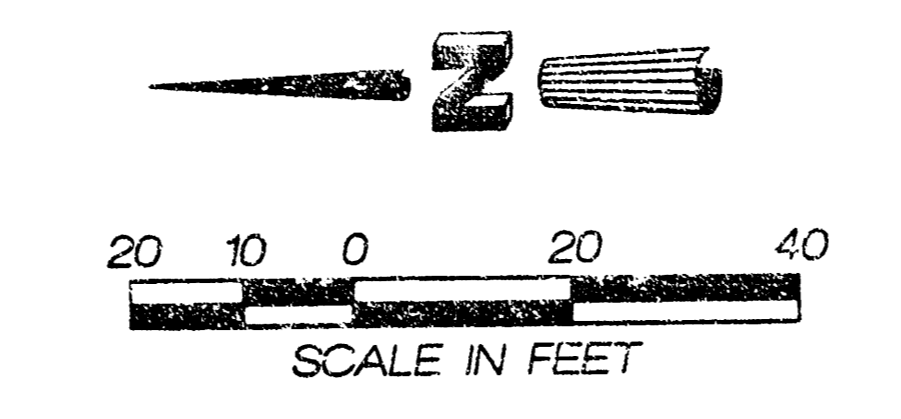
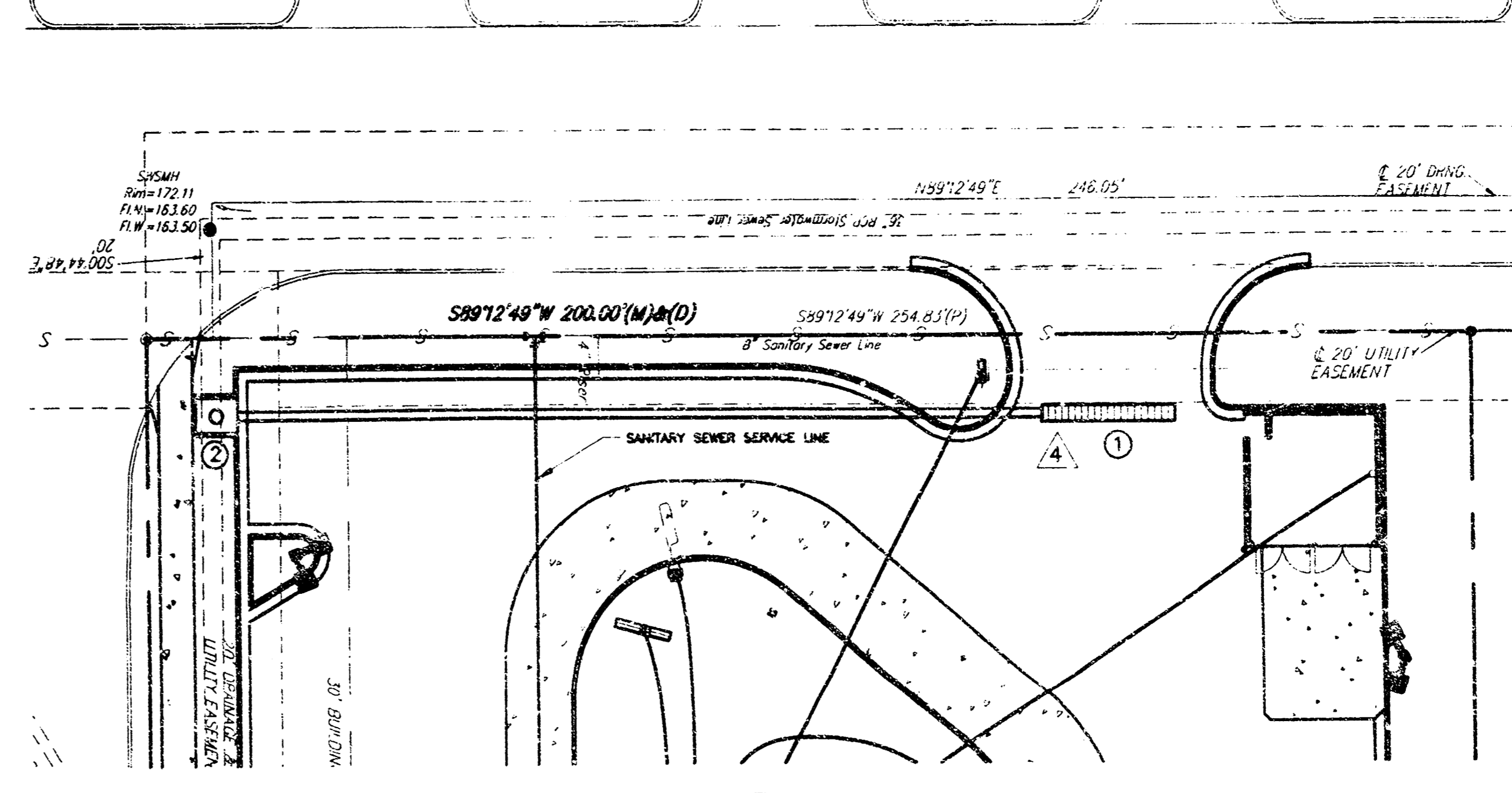
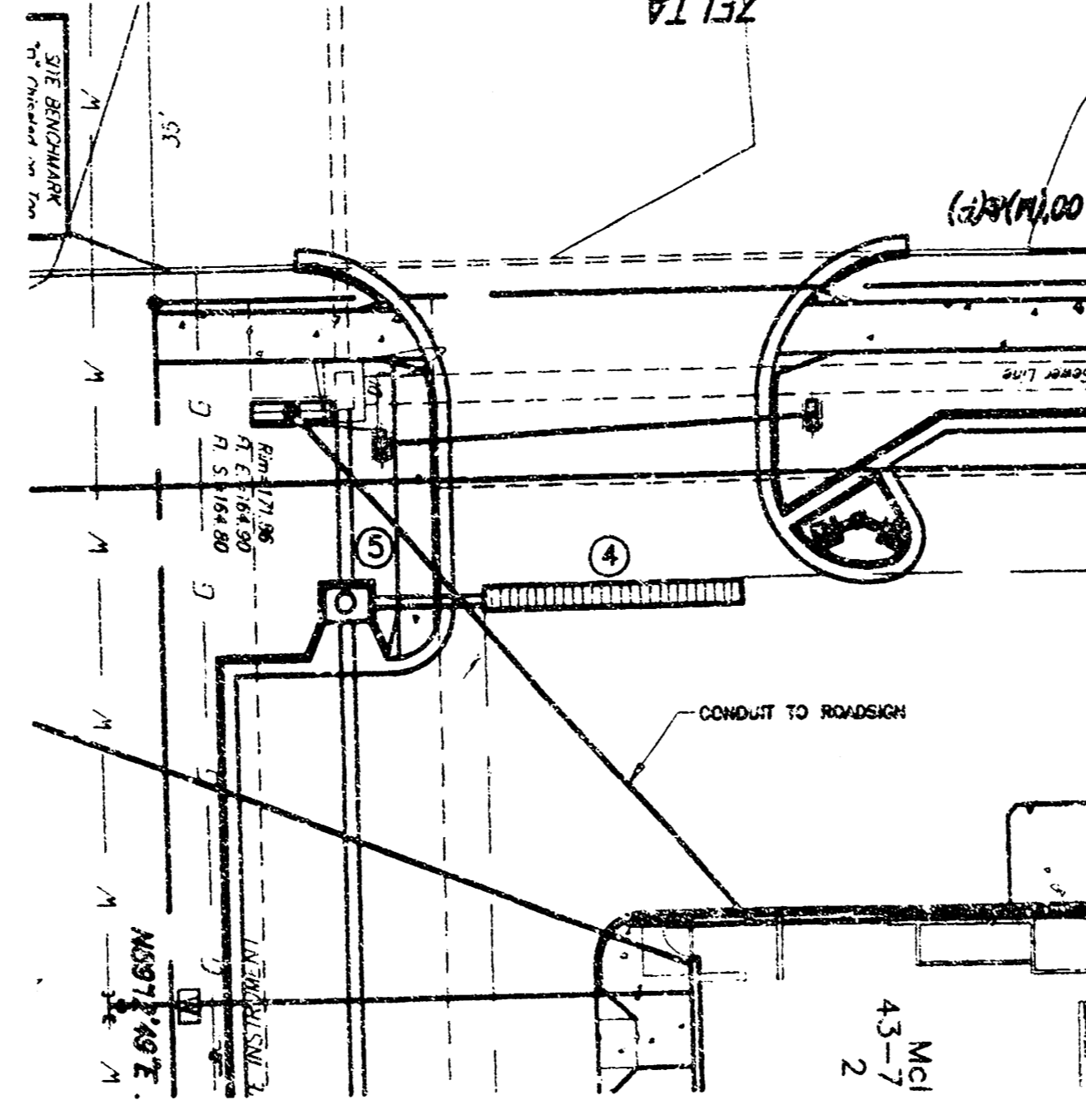
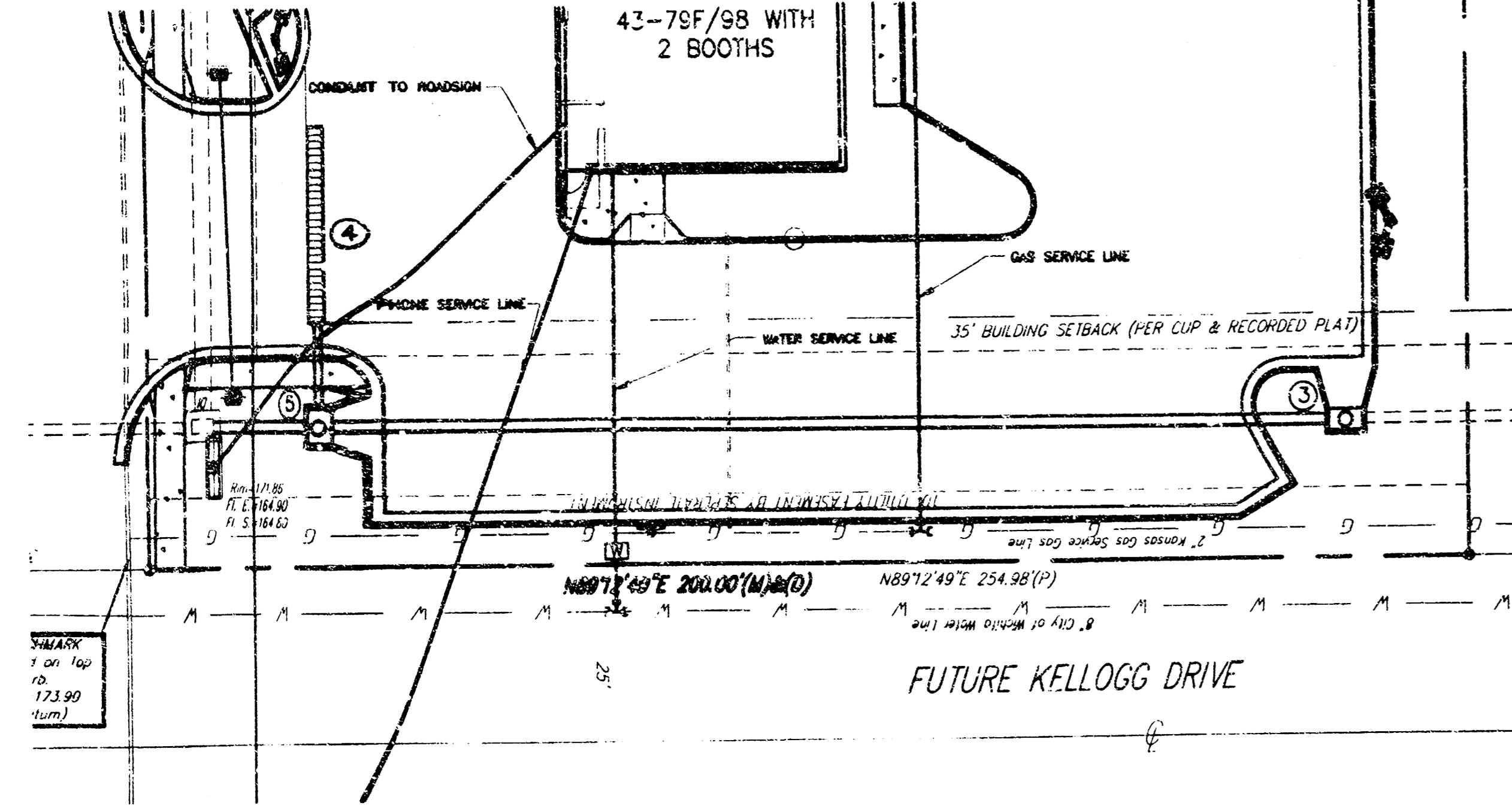
REGIONAL DWG. NO. KC-15/322

LOCATION CODE NUMBER C5

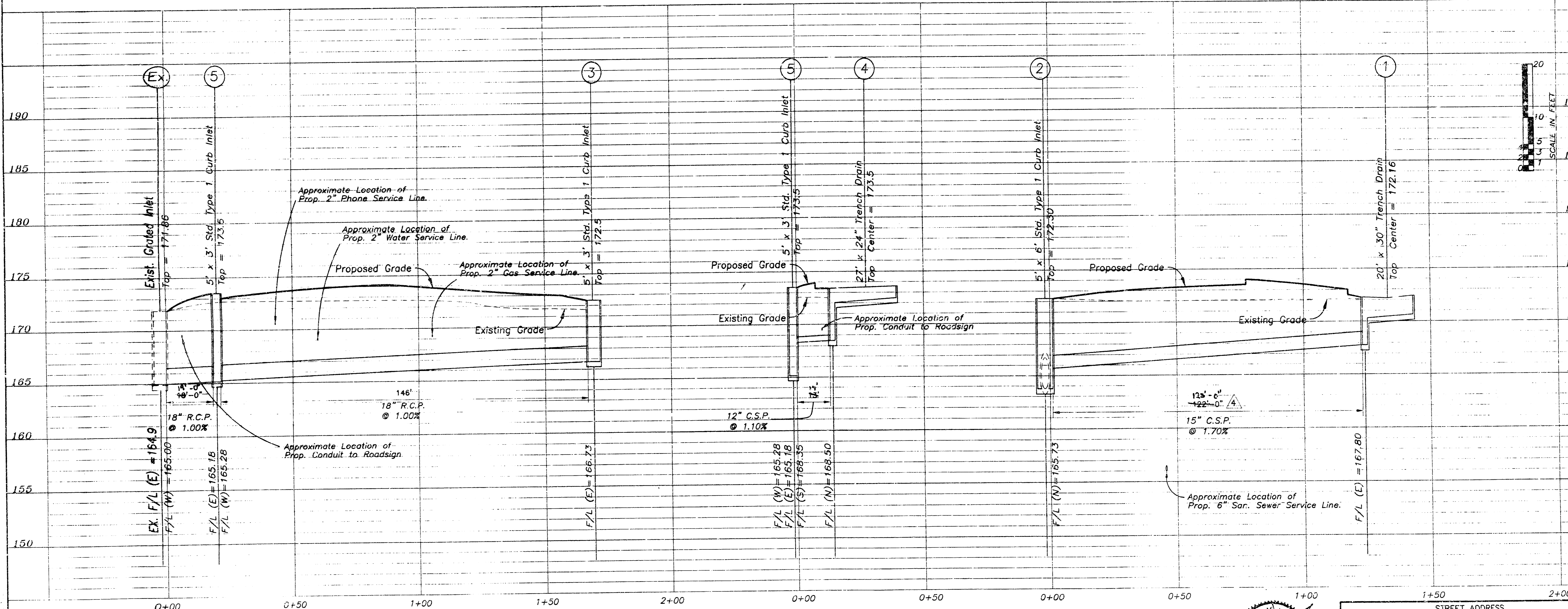
CBL PROJECT # 02020

F:\McDonalds\Wichita\Site Plans\McLogg\siteplan.dwg Thu Apr 18 15:59:15 2002 J. Davis

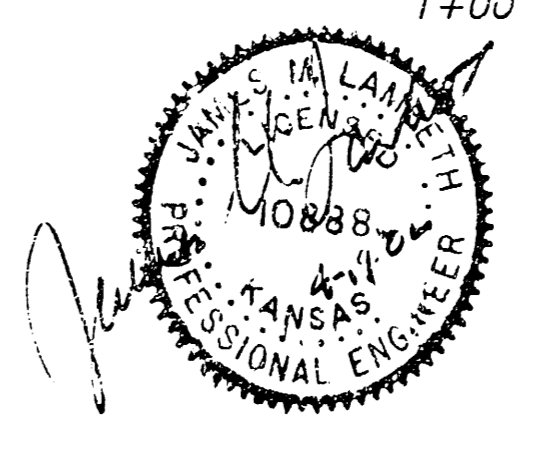
F:\1001\049 Thu Apr 18 15:56:56 2002 J. Davis



NOTE: SEE SHEET C2 FOR STORM SEWER CONSTRUCTION NOTES.



STORM SEWER PLAN AND PROFILE



STREET ADDRESS		11989 EAST KELLOGG
CITY	STATE	KANSAS CITY MISSOURI
COUNTY	JACKSON	

REV	DATE	DESCRIPTION	BY	ISSUE REF.
1	1/16/02	MISC. CITY REQUESTED REVISIONS	SHF	
2	1/28/02	ELIMINATE SIZE-87-SIZE DRIVE-THRU	SHF	
3	1/16/02	MISCELLANEOUS CITY REQUESTED REVISIONS	AND	
4	1/16/02	MISCELLANEOUS CITY REQUESTED REVISIONS	AND	

CAMPBELL, BARBER, LAMBETH AND ASSOCIATES, P.A.
 Consulting Engineers and Surveyors
 3115 Shawnee Mission, Kansas 66201
 Tel: (913)722-1220 Fax: (913)722-1223

MCDONALD'S

THESE PLANS AND SPECIFICATIONS ARE THE PROPERTY OF MCDONALD'S CORPORATION AND SHALL NOT BE REPRODUCED IN WHOLE OR IN PART WITHOUT PERMISSION.

OFFICE ADDRESS: 11800 COLLEGE BLVD., OVERLAND PARK, KS 66210

PLAN APPROVAL		DATE
SIGNATURE (2 REQUIRED)		
REGULAR MGR.		
CONSTR. MGR.		
OPERATIONS MGR.		
REAL ESTATE DEPT.		
CO-SIGN SIGNATURES		
CONTRACTOR		
OWNER		

STATUS	DATE	BY
PRELIMINARY	03/06/02	SHF
PLAN CHECKED	18/06/02	SHF
AS-BUILT		

C6
 CBL PROJ.#02012