

STORM WATER DRAIN EXTENSION

SERVING PART OF

LOT 1 & 2, TYLER ACRES SIXTH ADDITION
WICHITA, SEDGWICK COUNTY, KANSAS

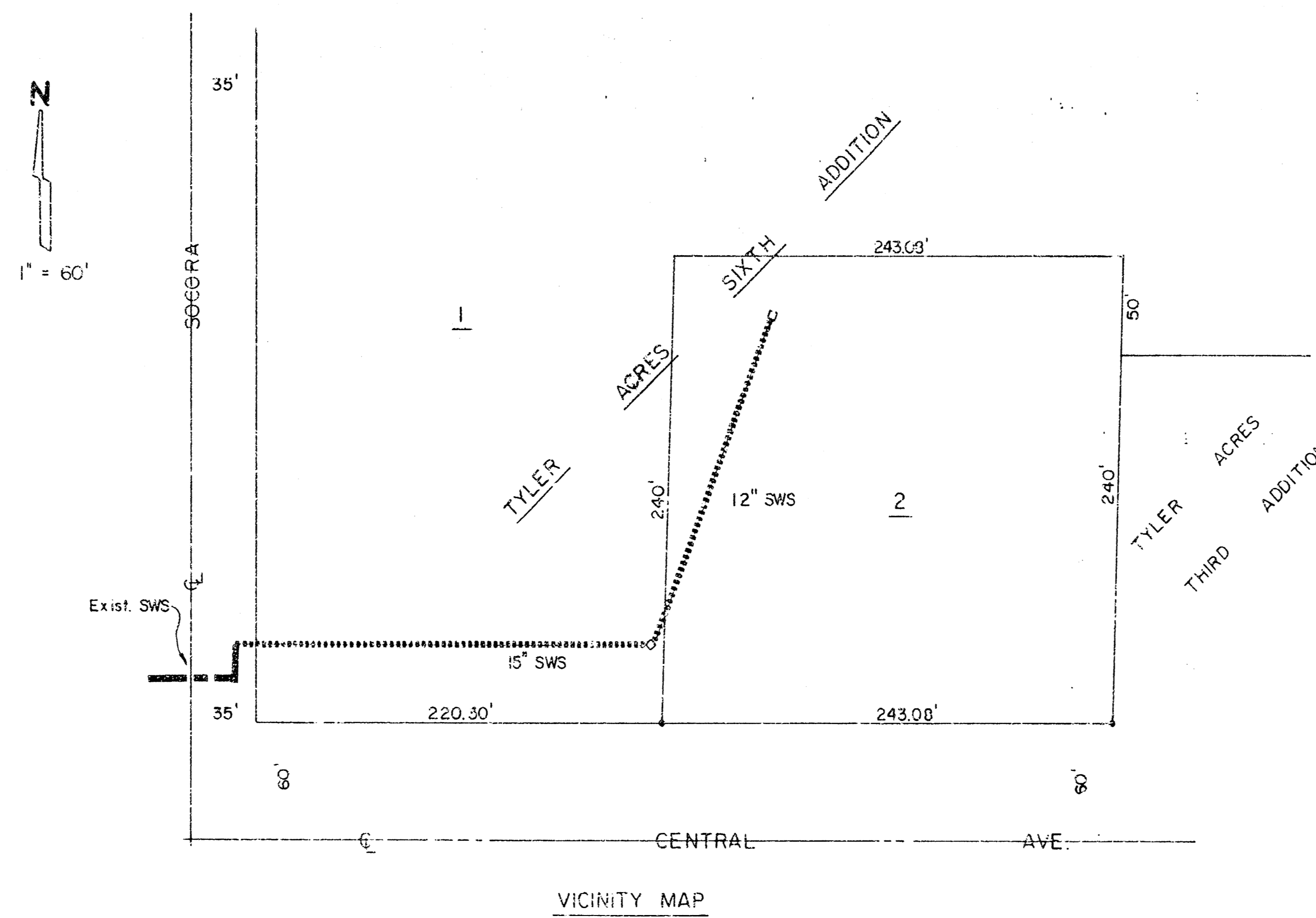
CITY OF WICHITA, KANSAS
M.E. LINDEBAK CITY ENGINEER

PRIVATE PROJECT NO. 38IPPS (607861)

FEBRUARY, 1993

INDEX OF SHEETS

SHEET NO.	DESCRIPTION
1	TITLE SHEET
2	PLAN & PROFILE
3	STANDARD



BENCHMARKS

- City Disc - 52' N. and 24' W. of Centerline Woodchuck & Central. Elev = 154.05
- "V" on walk at SW Cor. Lot 1, Tyler Acres Sixth Addition. Elev = 148.76

APPROVED AS NOTED
BY CITY ENGINEER OF WICHITA

Sanitary Sewers _____

Storm Sewers 3/12/93 VRLH

Driveway Approaches _____

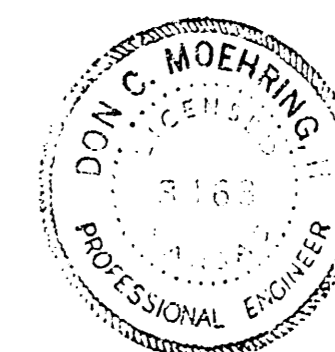
Water Mains _____

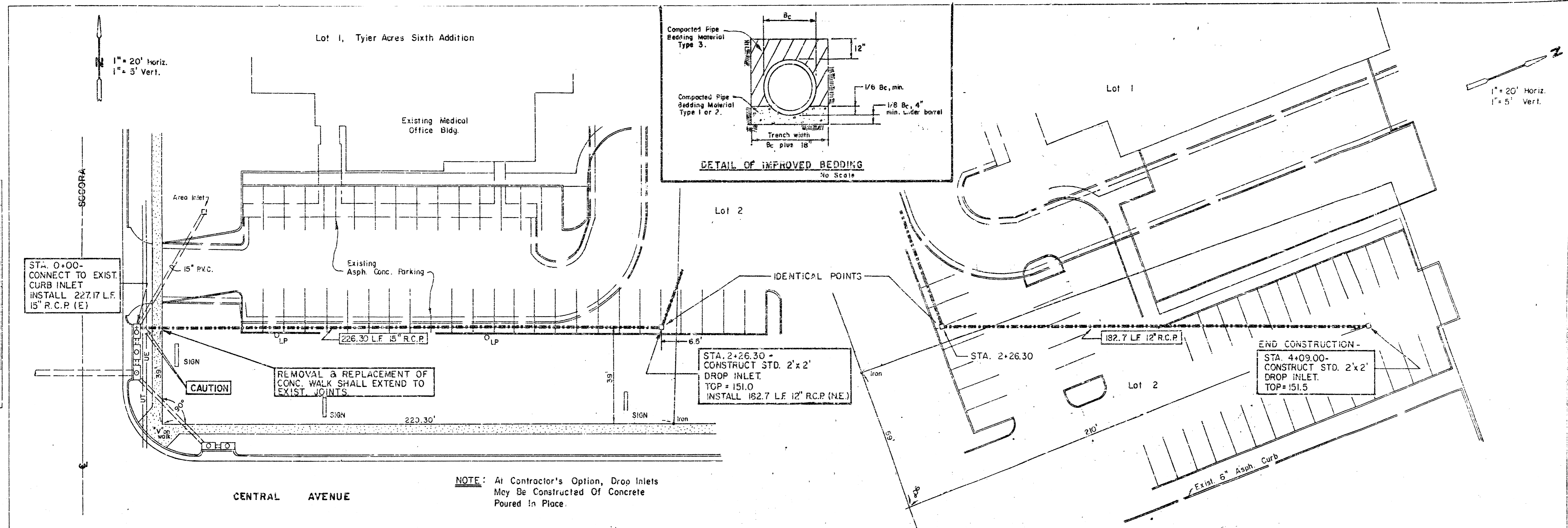
Paving _____

NOTE TO CONTRACTOR

INSPECTION AND TESTING FOR THIS PROJECT IS TO BE PROVIDED BY A LICENSED CONSULTING ENGINEERING FIRM UNDER CONTRACT WITH THE OWNER/DEVELOPER. SAID INSPECTION TO BE IN ACCORDANCE WITH THE CITY OF WICHITA STANDARD CONSTRUCTION ENGINEERING PRACTICES AND CERTIFIED BY A LICENSED PROFESSIONAL ENGINEER. NO WORK SHALL BE PERFORMED IN DEDICATED EASEMENTS OR THE PUBLIC RIGHT-OF-WAY BY THE CONTRACTOR WITHOUT SUCH INSPECTION NOR SHALL ANY WORK BE COMMENCED IN DEDICATED EASEMENTS OR PUBLIC RIGHT-OF-WAY WITHOUT WRITTEN AUTHORIZATION BY THE CITY ENGINEER.

MOEHRING & ASSOCIATES
CONSULTING ENGINEERS
WICHITA





PLAN

DATE

BY

REVISIONS

NO.

DATE

BY

REVISIONS

PROFILE

DATE

BY

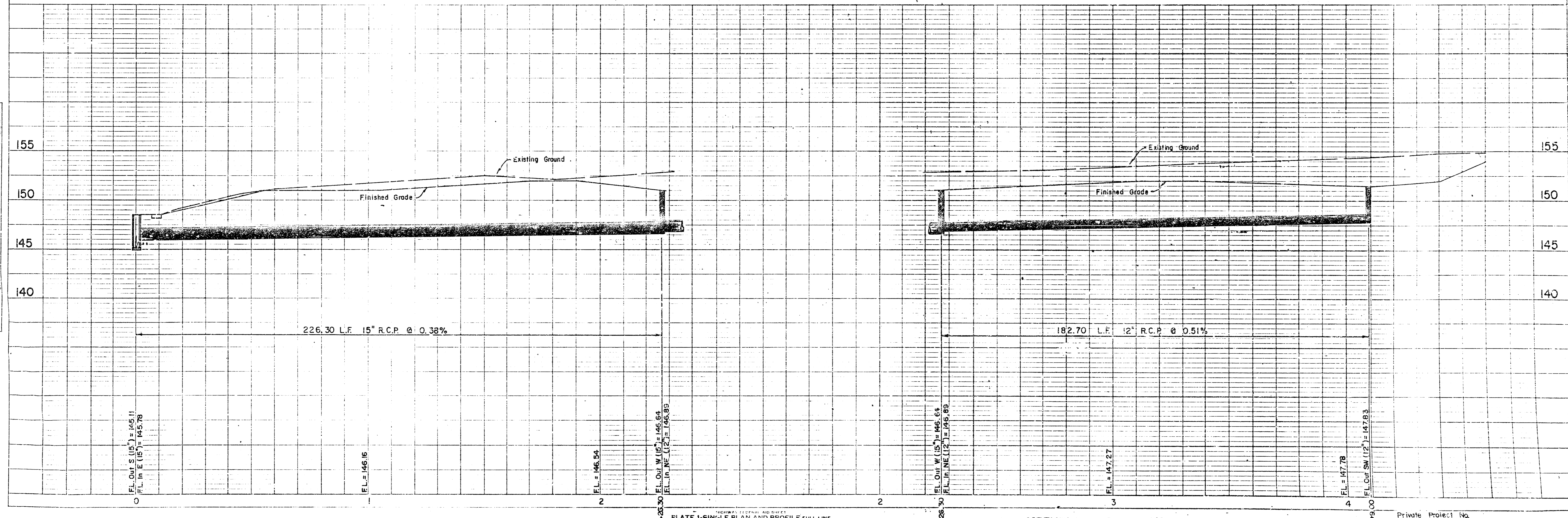
REVISIONS

NO.

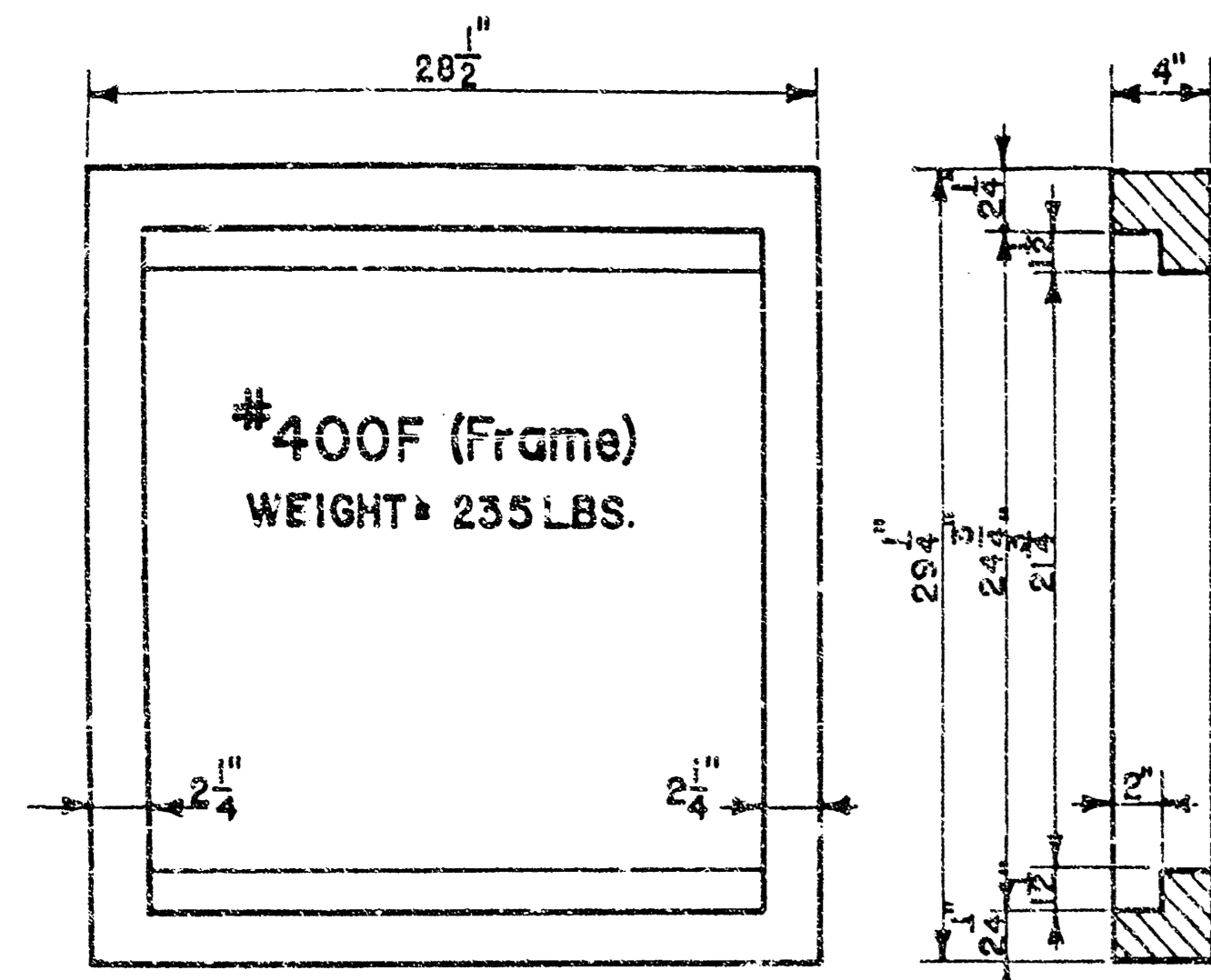
DATE

BY

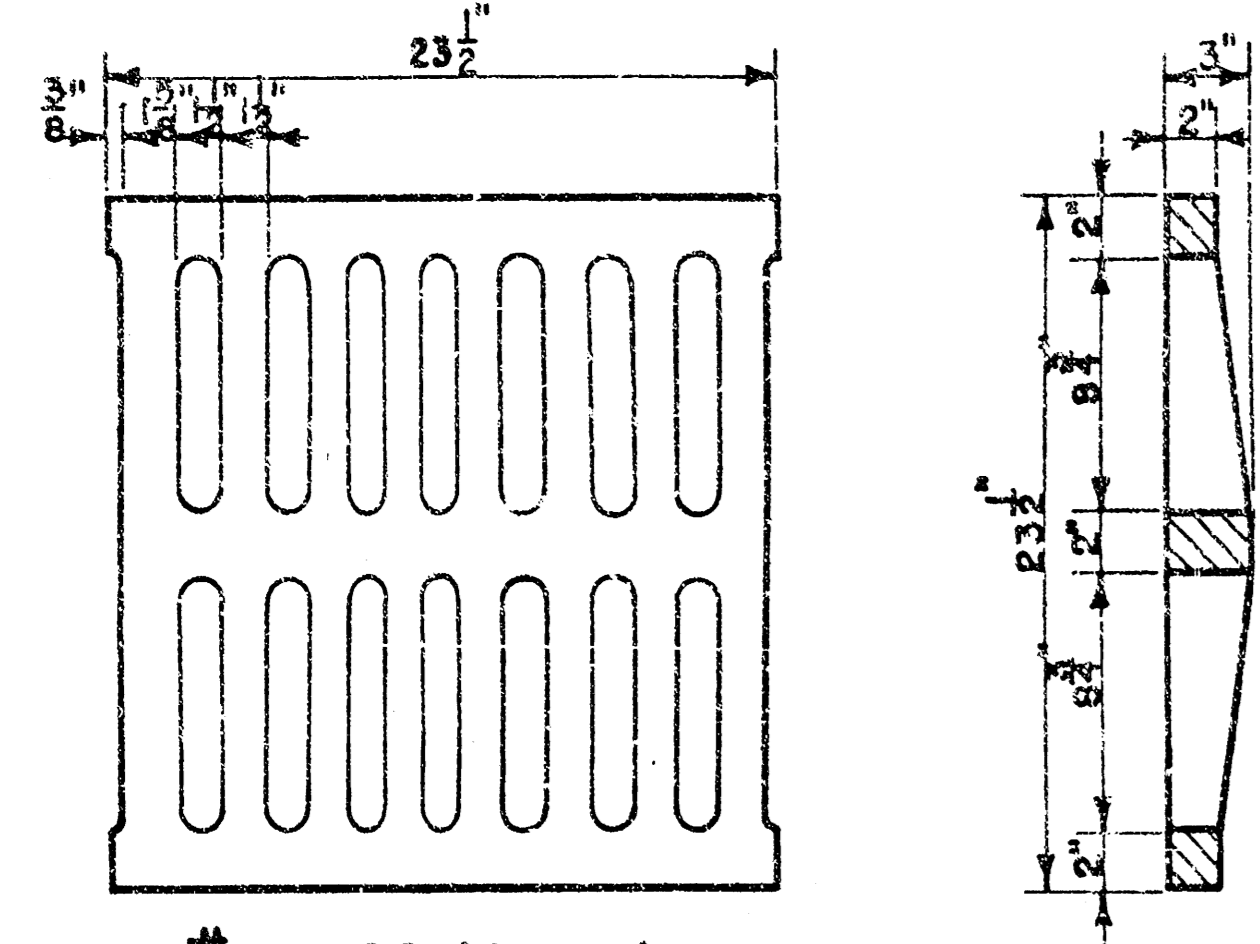
REVISIONS



NOTE: Grates shall be imprinted on the top surface with "CITY OF WICHITA" using letters at least 1" in height. Other marking methods may be used only if approved by the engineer.

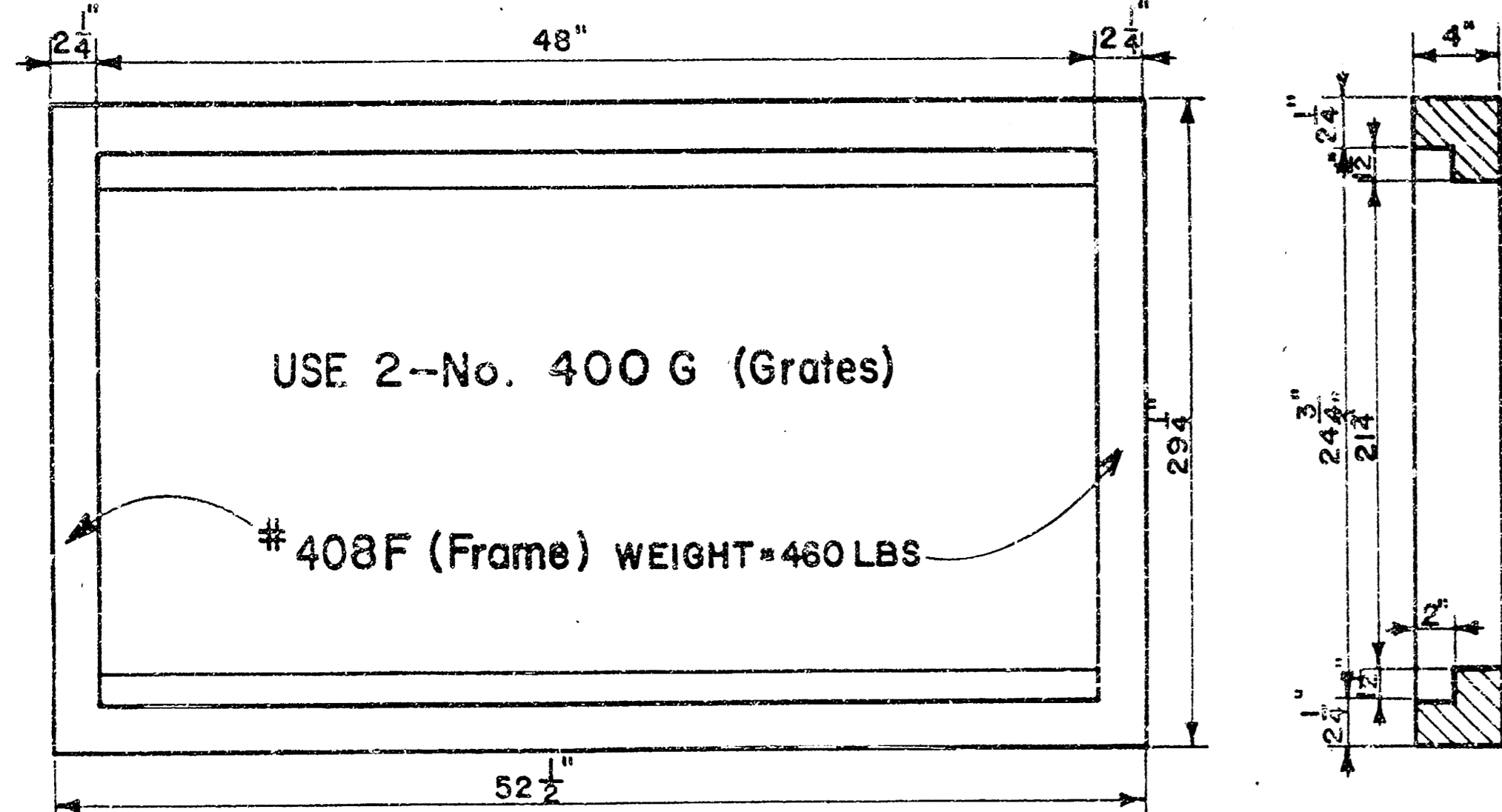


#400F (Frame)
WEIGHT = 235 LBS.

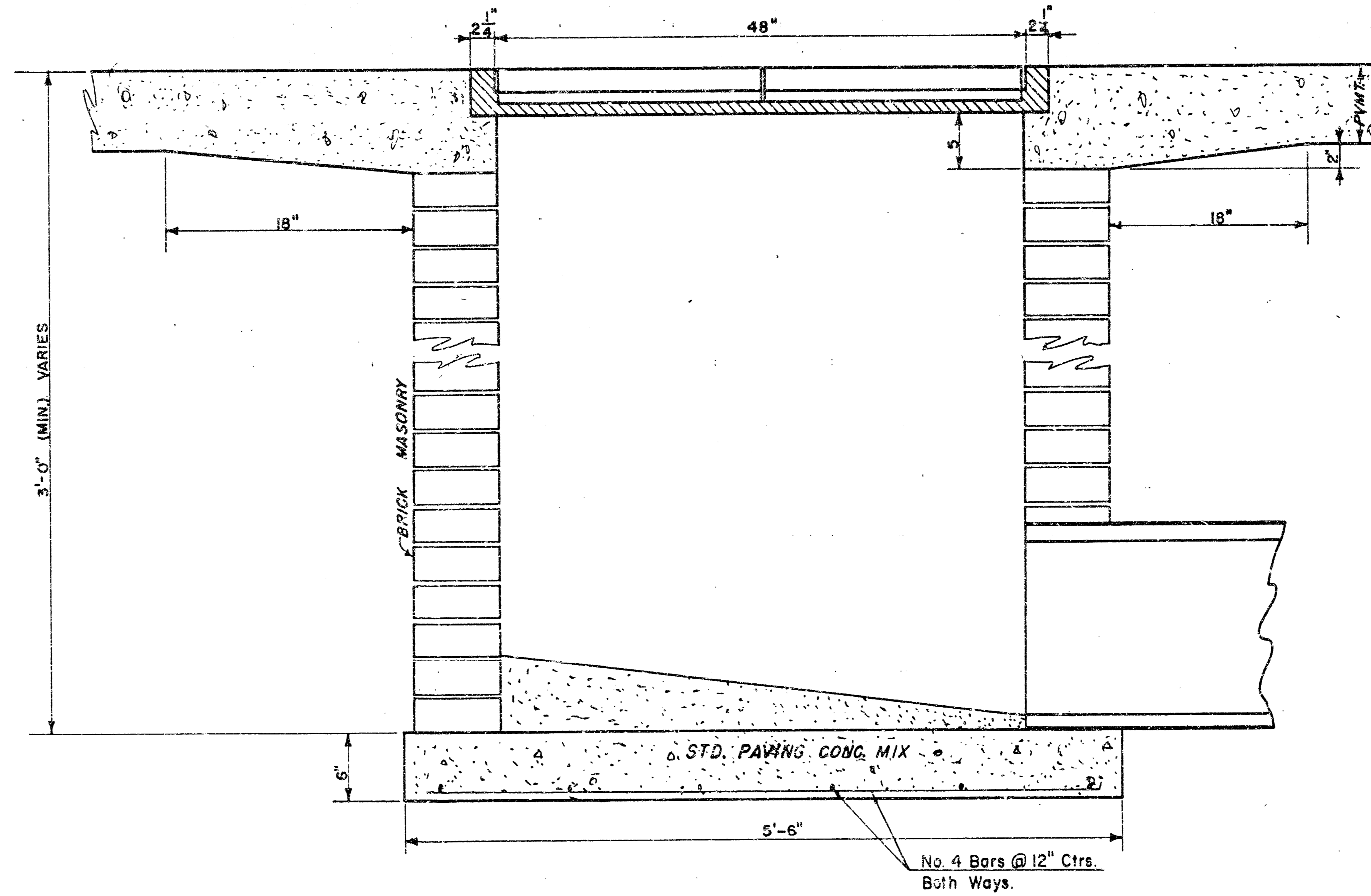
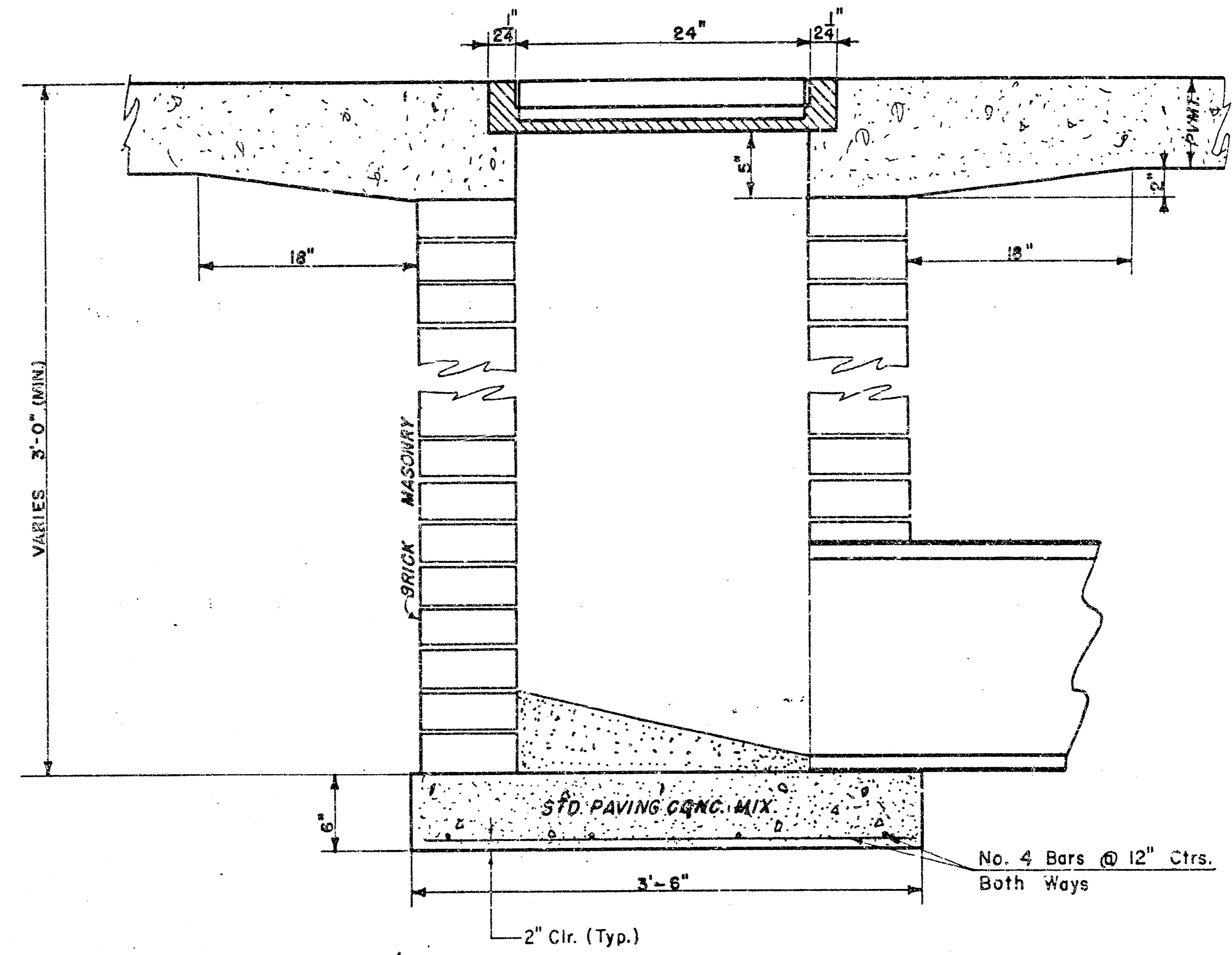
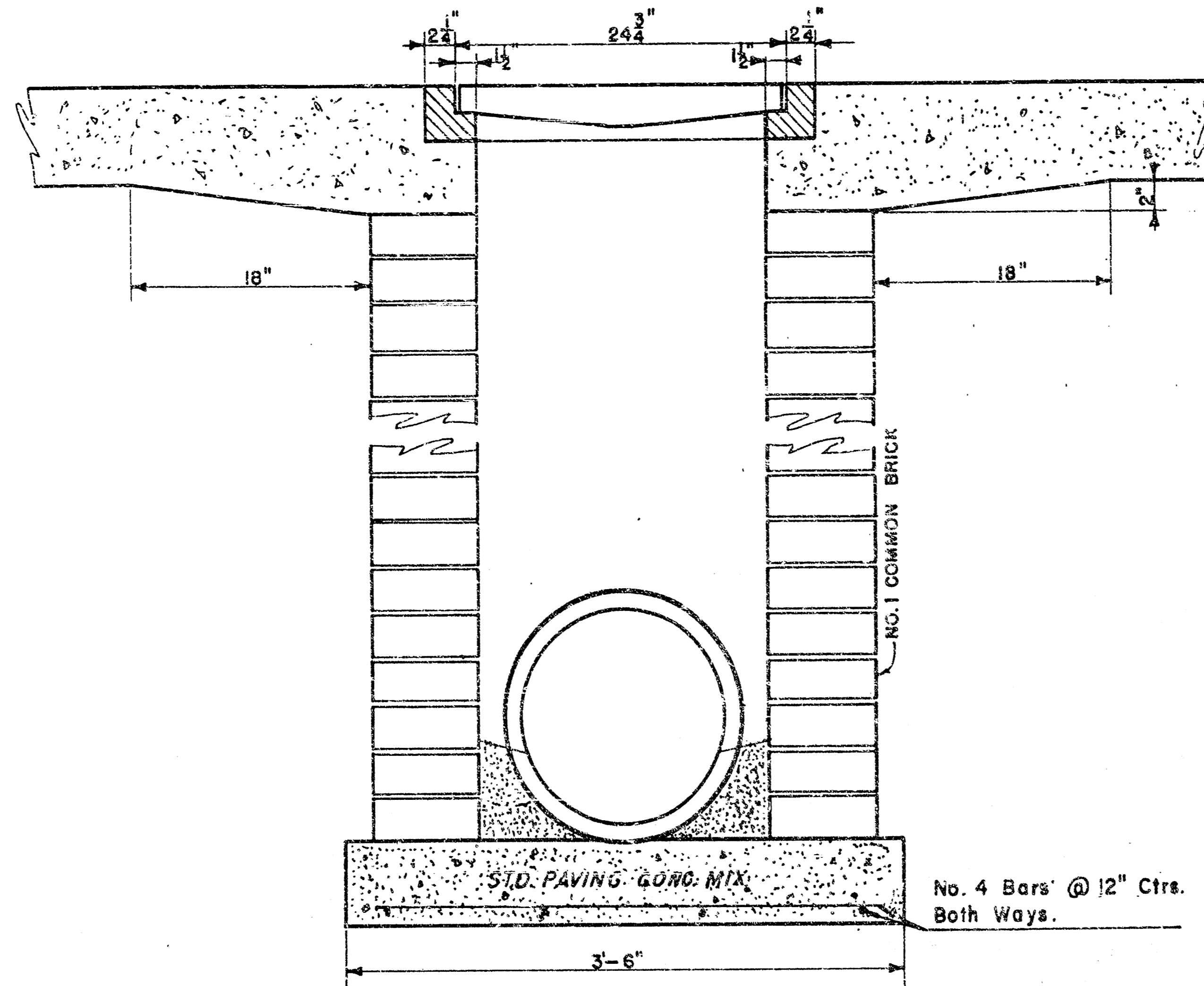


#400G (Grate)
WEIGHT = 233 LBS.

24"x24" Frame & Grate Detail



Double 24"x24" Frame Detail



DROP INLET DETAILS

M.E. Lindebak, City Engineer
City of Wichita, Kansas
Project
Project No.

Date:
Scale: 1-1/2" = 1'-0"

14-0-5-0
Sheet 3 of 3