

STORM WATER DRAIN NO. 61
WICHITA LAND ADDITION DRAINAGE
PROJECT NO. 468 76 245 81321 000 000 001
INDEX NO. 750042

MICHAEL E. LINDEBAK, P.E., CITY ENGINEER
CITY OF WICHITA, KANSAS

AUGUST, 1989

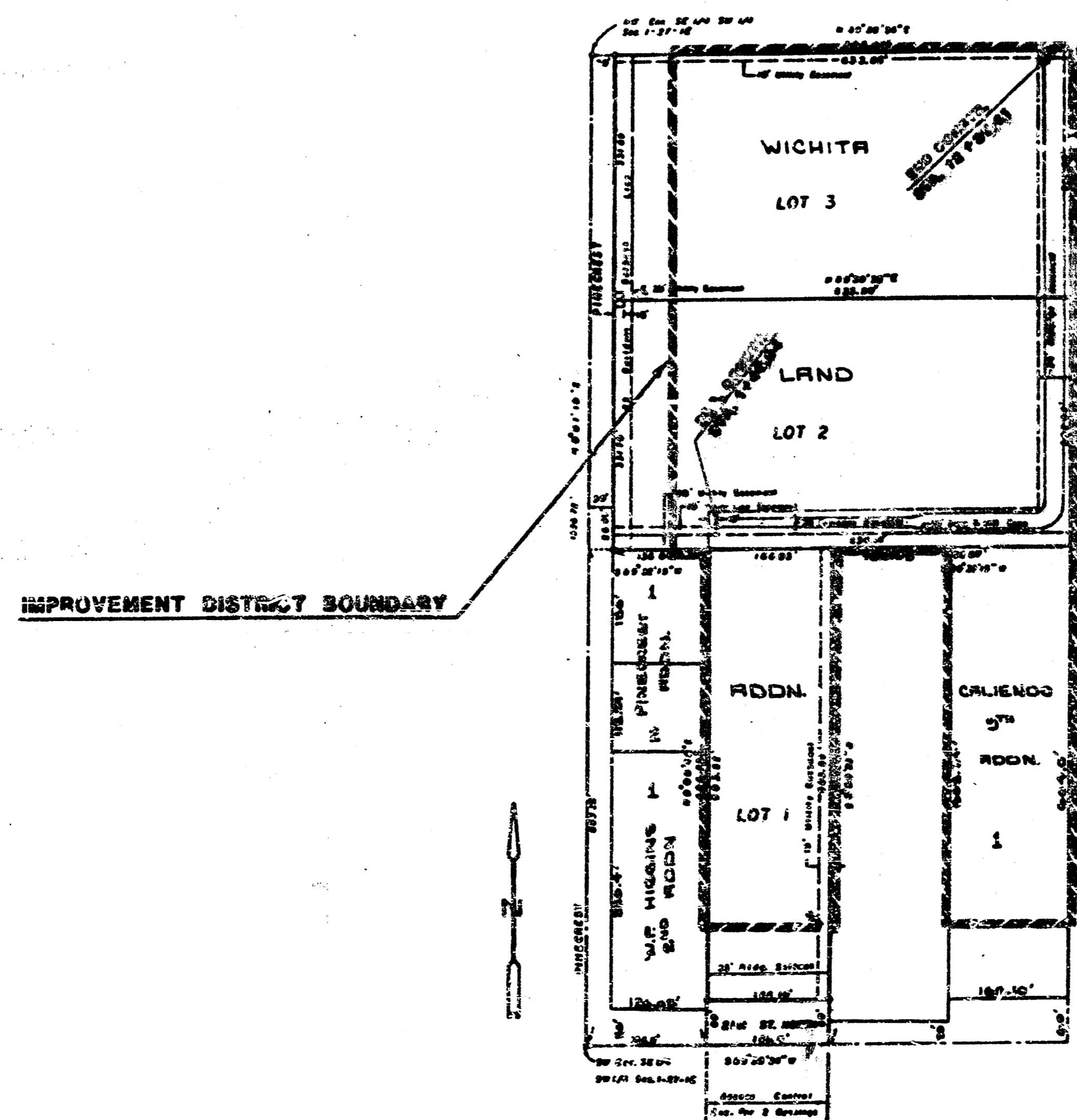
INDEX

SHEET 1 TITLE SHEET
 SHEET 2-4 PLANS & PROFILES

GENERAL NOTES

- 1) Surplus excavated material shall be disposed of on site, on Lots 2 & 3 of Wichita Land Addition, by the contractor as directed or as approved by the engineer.
 The contractor shall blade smooth and slope to drain the surplus excavated material.
- 2) The contractor shall be responsible for preserving property irons. The contractor will be required to re-establish any property irons which are damaged or destroyed by his construction operation.
- 3) The contractor is solely responsible to notify and to make any necessary arrangements with utility companies for any needed adjustments of utility facilities prior to construction.
- 4) Contractor will be required to provide a minimum advance notice of forty-eight (48) hours to utility companies prior to starting any excavation as follows:

Kansas One Call	687-2470
Southwestern Bell Telephone Company	1-316-571-2611
Cablevision	262-4270 or 263-2061
KSL Gas Service	263-7511
Kansas Gas & Electric	264-1141
City of Wichita Water Department	268-4908
City of Wichita Sewer Department	268-4071
Arkla Gas Company	942-8350 or 263-8161



1 of 4

FILMED FROM THE BEST AVAILABLE COPY

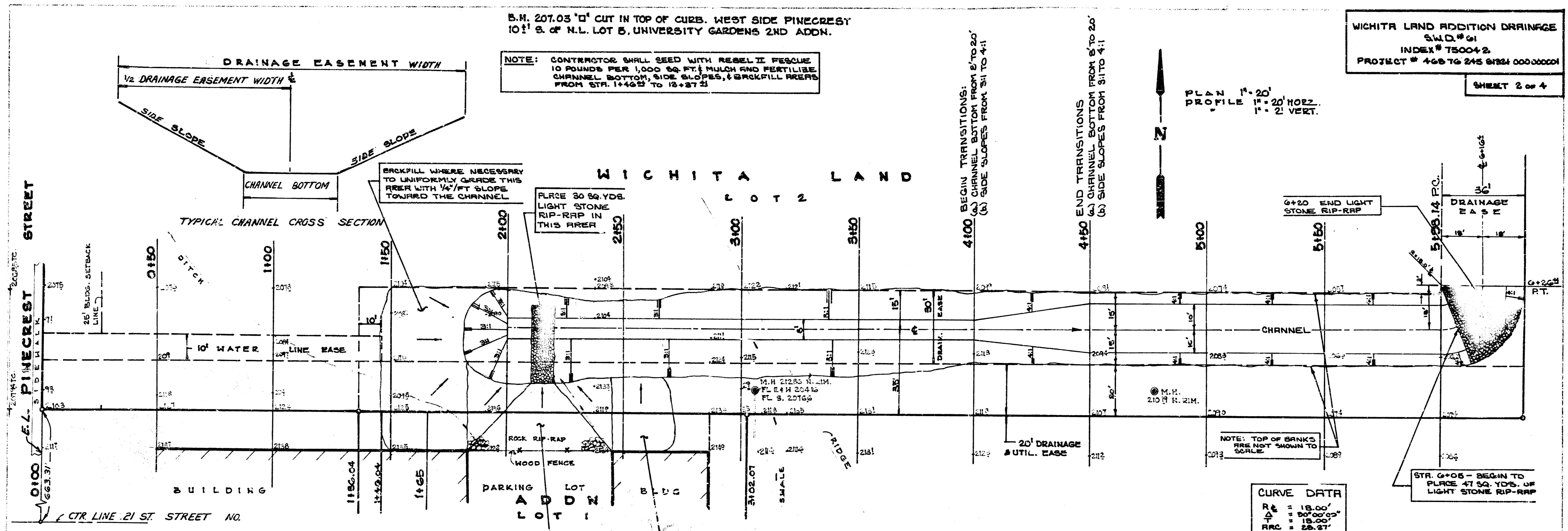
WICHITA LAND ADDITION DRAINAGE
 S.W.D. # 61
 INDEX # 750042
 PROJECT # 46876 245 8124 00000001

SHEET 2 of 4

B.M. 207.03 "D" CUT IN TOP OF CURB, WEST SIDE PINECREST
 10'± S. OF N.L. LOT 5, UNIVERSITY GARDENS 2ND ADDN.

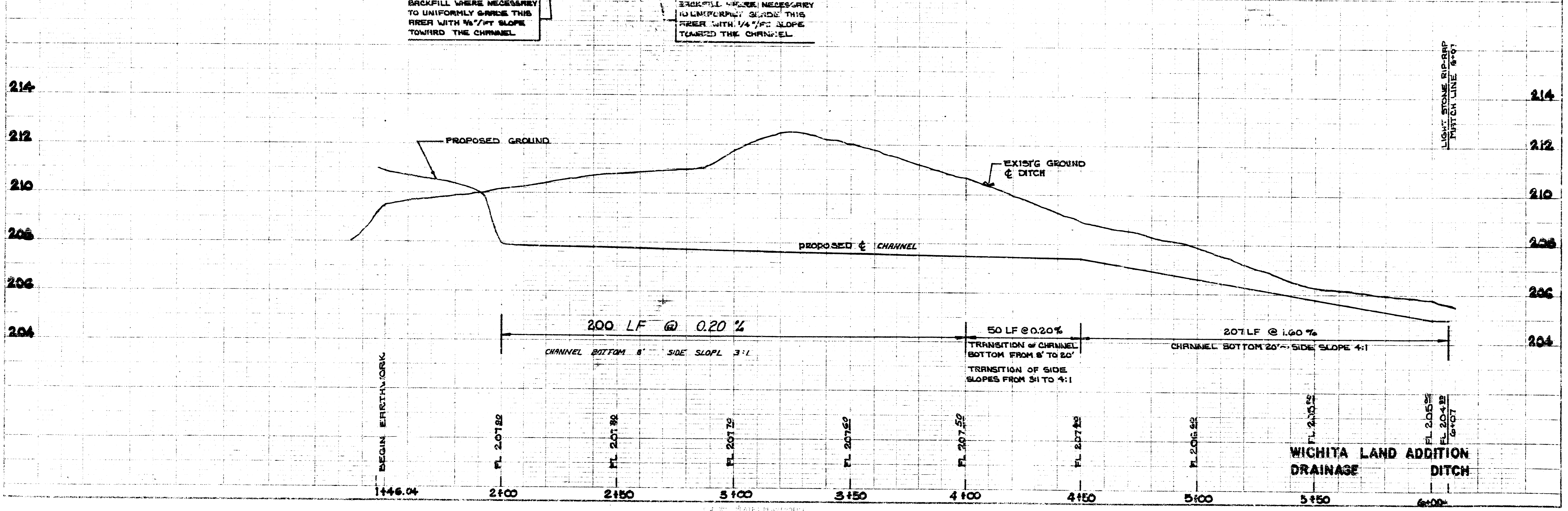
NOTE: CONTRACTOR SHALL SEED WITH REBEL II FESCUE
 10 POUNDS PER 1,000 SQ. FT. MULCH AND FERTILIZE
 CHANNEL BOTTOM, SIDE SLOPES, & BACKFILL AREAS
 FROM STA. 1+46.21 TO 13+27.21

PLAN 1" = 20'
 PROFILE 1" = 20' HORIZ.
 1" = 2' VERT.



CURVE DATA

R	= 18.00'
Δ	= 80°00'00"
L	= 18.00'
ARC	= 28.27'



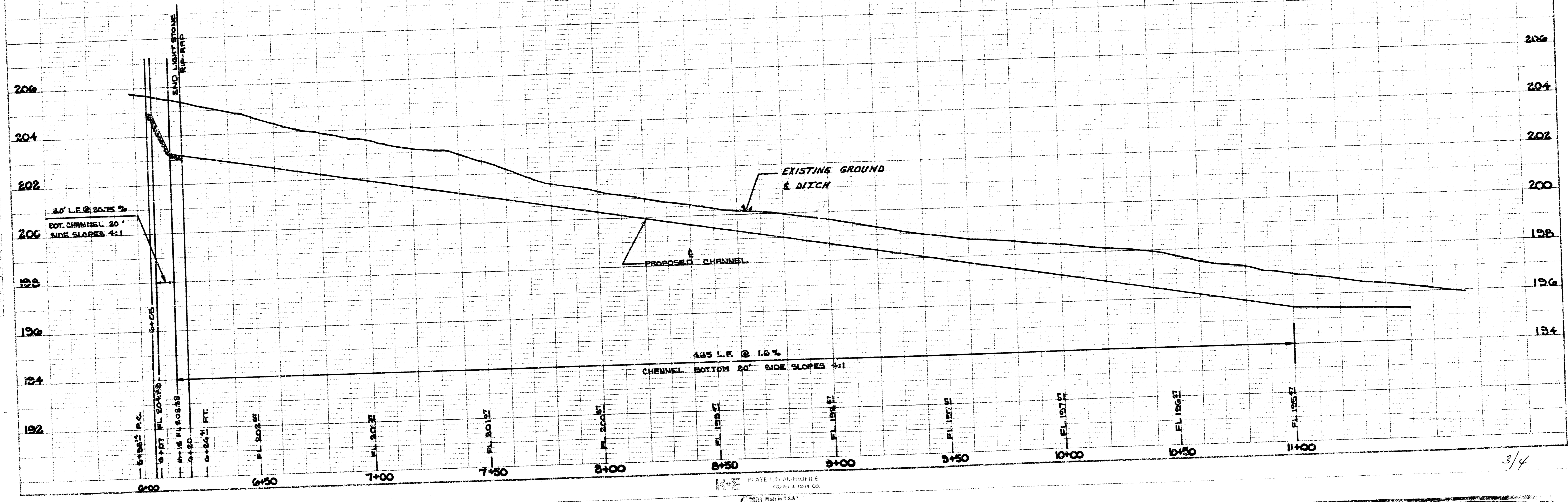
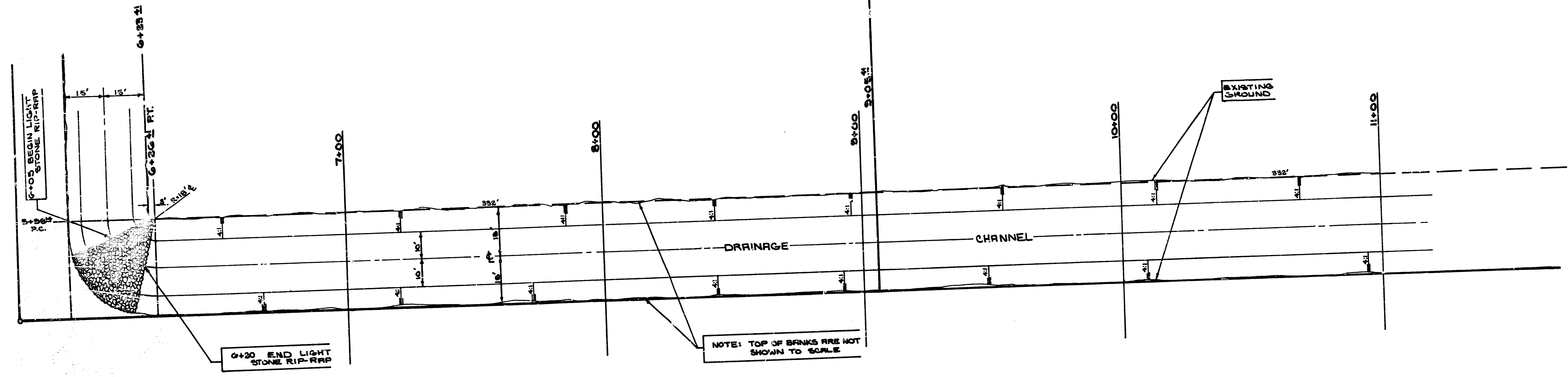
FILMED FROM THE BEST AVAILABLE COPY

WICHITA LAND ADDITION DRAINAGE
 S.W.D. #61
 INDEX # 750042
 PROJECT # 108 76 245 81321 000 000 001

SHEET 3 of 4

WICHITA LAND ADDITION
 LOT 2 LOT 3

PLAN 1" = 20'
 PROFILE 1" = 20' HORIZ.
 1" = 2' VERT.



PLAN MILL STATE

PROFILE

3/4

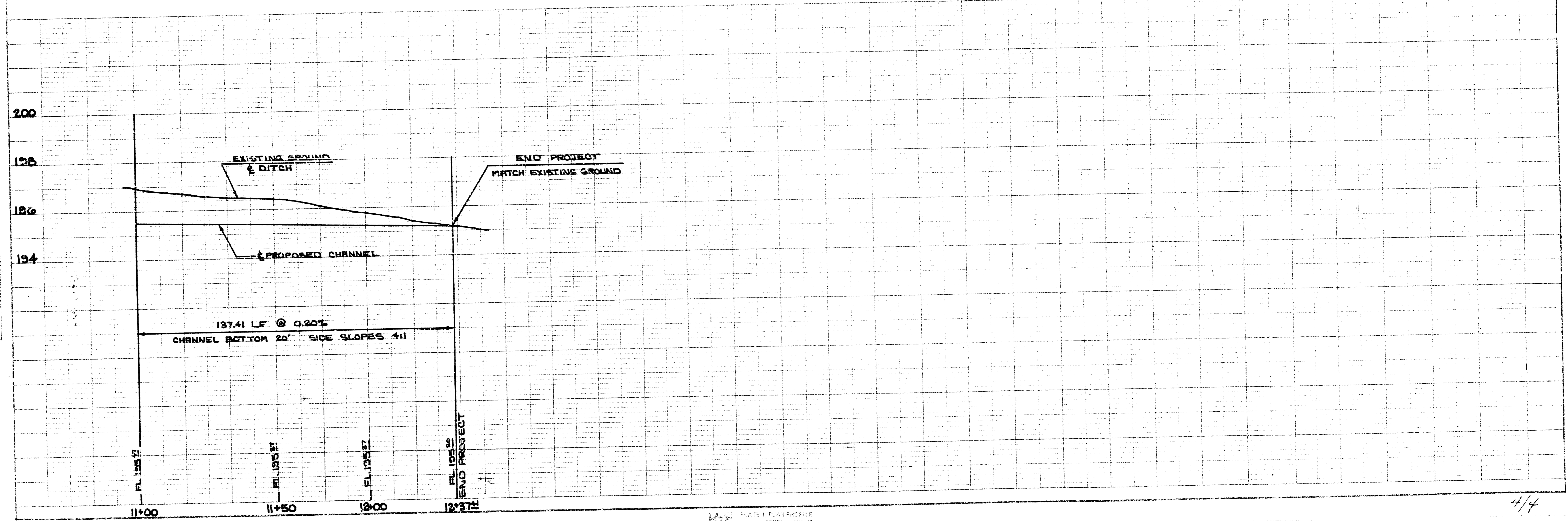
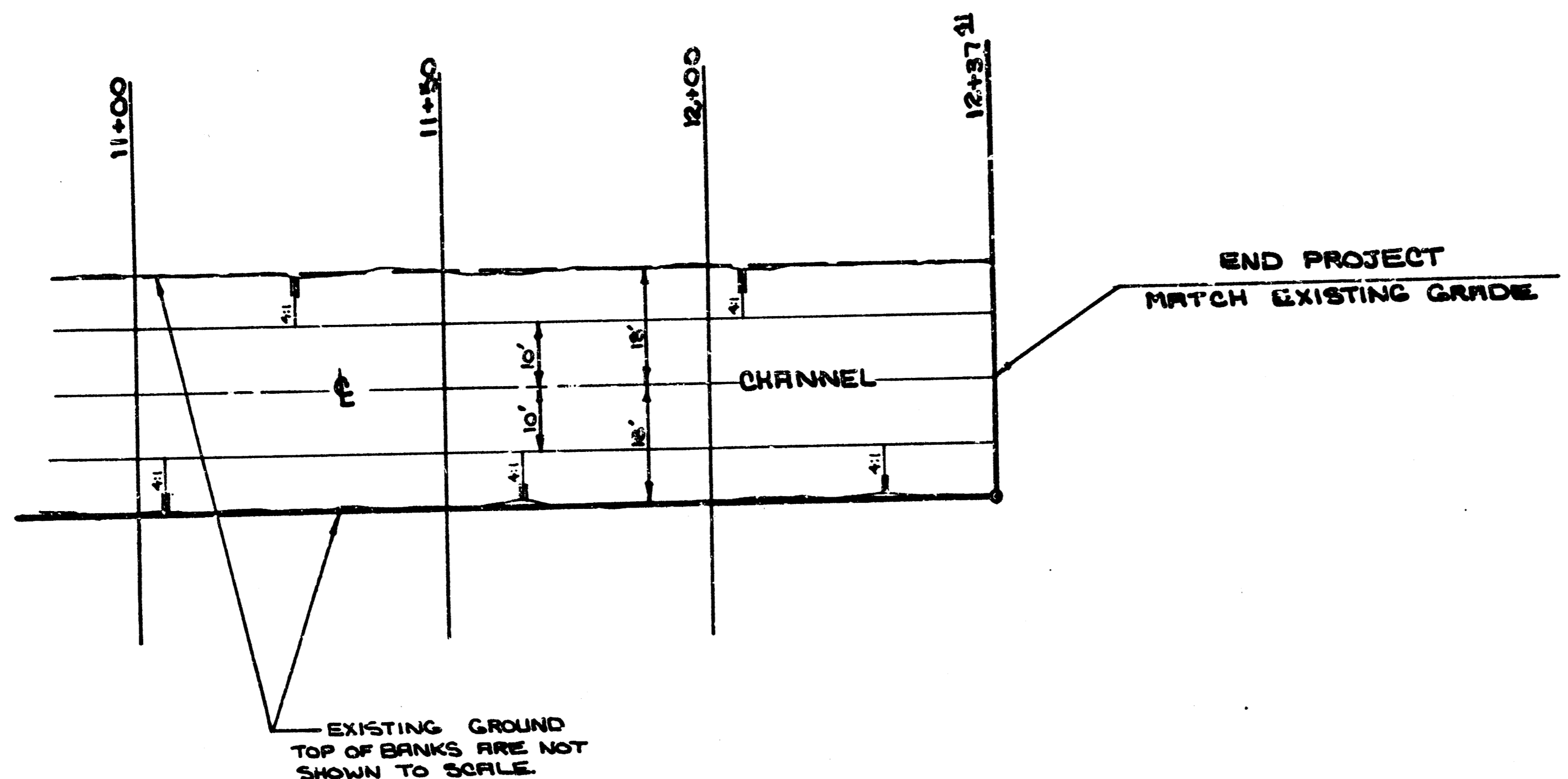
FILMED FROM THE BEST AVAILABLE COPY

WICHITA LAND ADDITION DRAINAGE
 S.W.D. #61
 INDEX # 7500+2
 PROJECT # 468 TO 245 81821 000 000 001

SHEET 4 of 4

N
 PLAN 1"=20'
 PROFILE 1"=20' HORIZ.
 1"=8' VERT.

WICHITA
 LAND ADDITION
 LOT 3



PLAN
 SCALE
 DATE

PROFILE
 SCALE
 DATE

SCALE 1"=20' HORIZ.
 1"=8' VERT.

FILMED FROM THE BEST AVAILABLE COPY