

STORM WATER DRAIN #162 TO SERVE LOTS 1 AND 2 SAVANNAH PLACE ADDITION PROJECT NO. 468-83232 OCA NO. 751296

GENERAL NOTES

- Contractor will be required to provide a minimum advance notice of forty-eight (48) hours to utility companies prior to starting any excavation as follows:

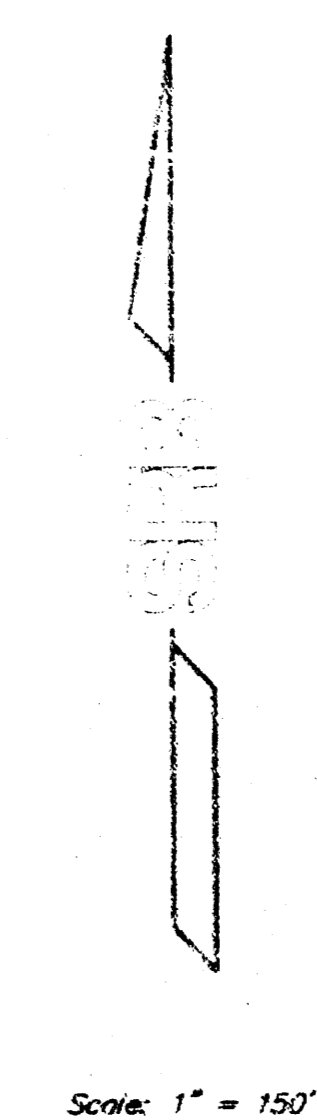
Kansas One-Call	687-2470
-----------------	----------
- The Contractor must notify the following in case of an emergency:

Cox Communications	262-0661
Kansas Gas Service	233-8600
KGE	383-8623
Peoples Natural Gas Company	1-800-303-0357
Southwestern Bell Telephone Company	1-800-286-8313
City of Wichita Water Department	252-6200
City of Wichita Sewer Maintenance	252-8000
- One lane of traffic on University to remain open at all times.
- Existing utilities and their location, as shown on the plans, represent the best information obtainable for design. Location information has been obtained from the various utility companies and is either from company record drawings or company-provided field locations. The Contractor will be required to work around existing utilities within the right-of-way which do not conflict with proposed construction.
- The Contractor shall give all property owners and/or tenants of developed property directly abutting the construction of this project a minimum of ten (10) days advance notice prior to start of construction.
- The Contractor shall be responsible for preserving property irons. The Contractor will be required to re-establish any property irons which are damaged or destroyed by his construction operations. Such irons shall be re-established by a licensed land surveyor in accordance with state laws.
- The Contractor shall obtain the necessary permits from the Office of Central Inspection prior to any roof drain hook-up to the storm water sewer system.
- All work on this project to be in accordance with City of Wichita Standard Specifications dated March 1998.

BENCH MARKS

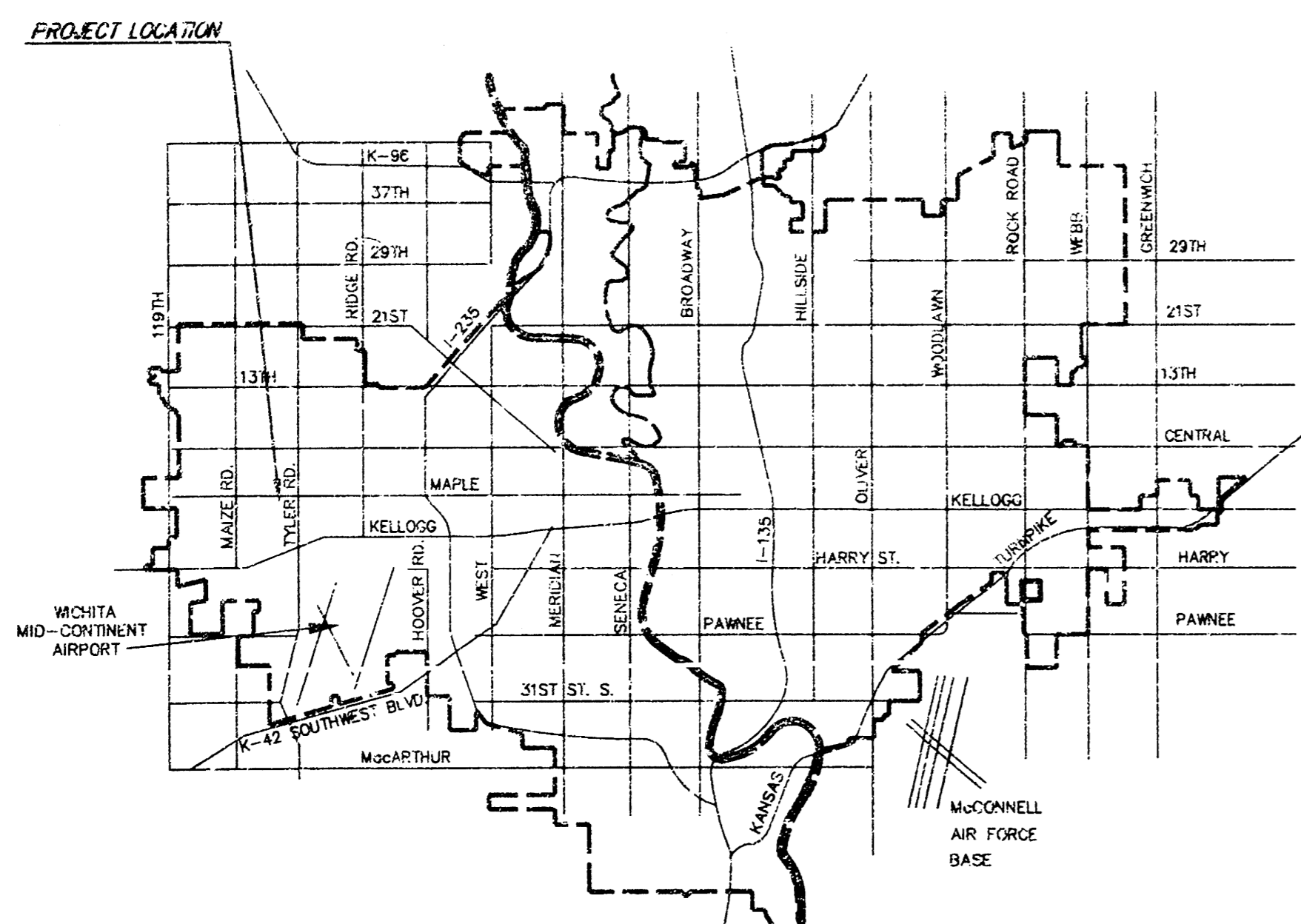
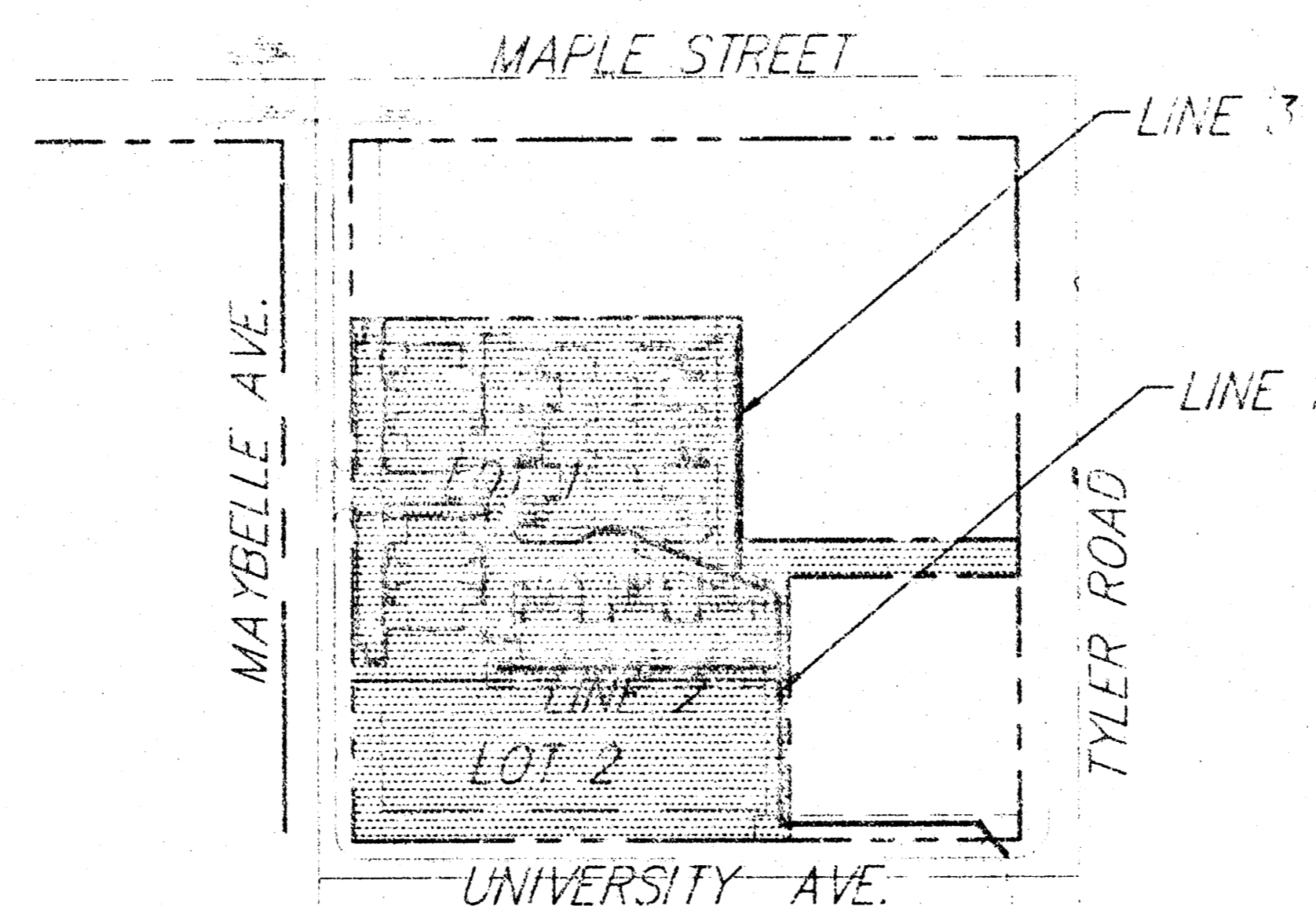
City of Wichita Benchmark
50.7' north and 25.2' east of the C/L of Tyler and Maple
in turn south 1/4 Sec. 36, T. 21N., R. 15W. to be located.
Elev. 144.12 (City Datum)

3rd- Site Bench Mark
Square 0.4, Top of curb east end of curb return
at N.E. Cor. of Webster and University.
Elev. 143.78 (City Datum)



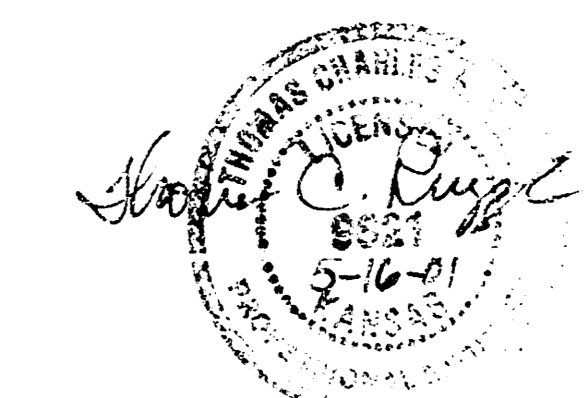
INDEX OF SHEETS

- TITLE SHEET
- PLAN & PROFILE
- MANHOLE DETAIL
- SPECIAL DROP INLET DETAIL
- SID. DROP INLET DETAIL
- PLAT COPY



VICINITY MAP

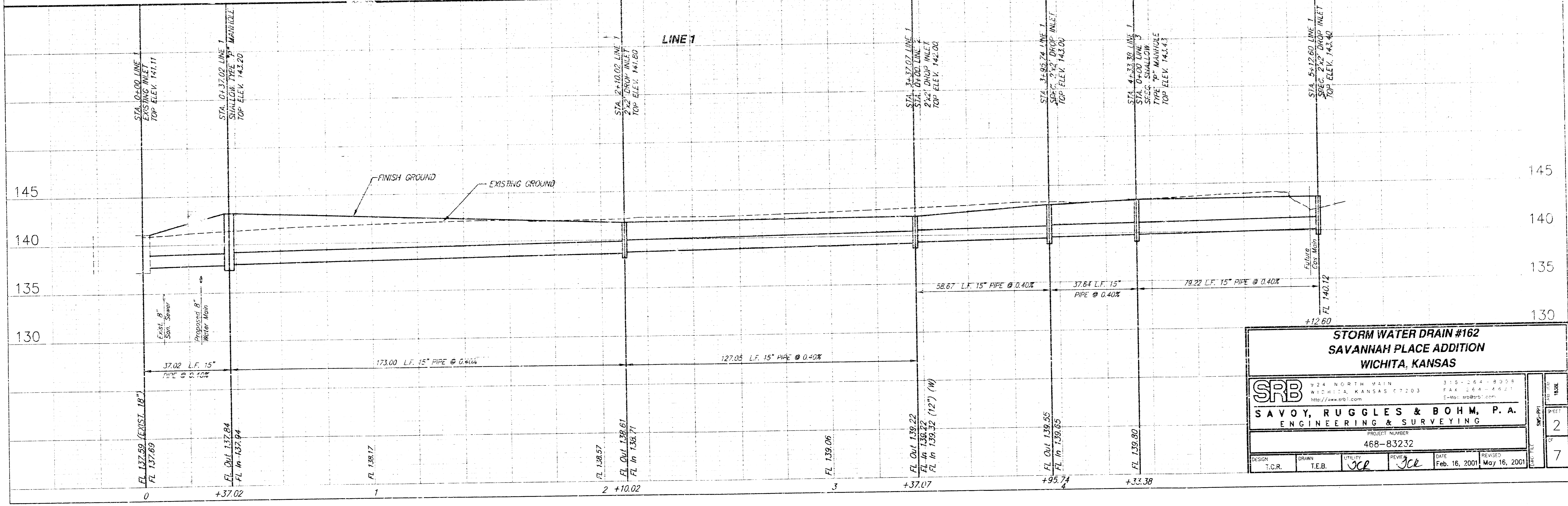
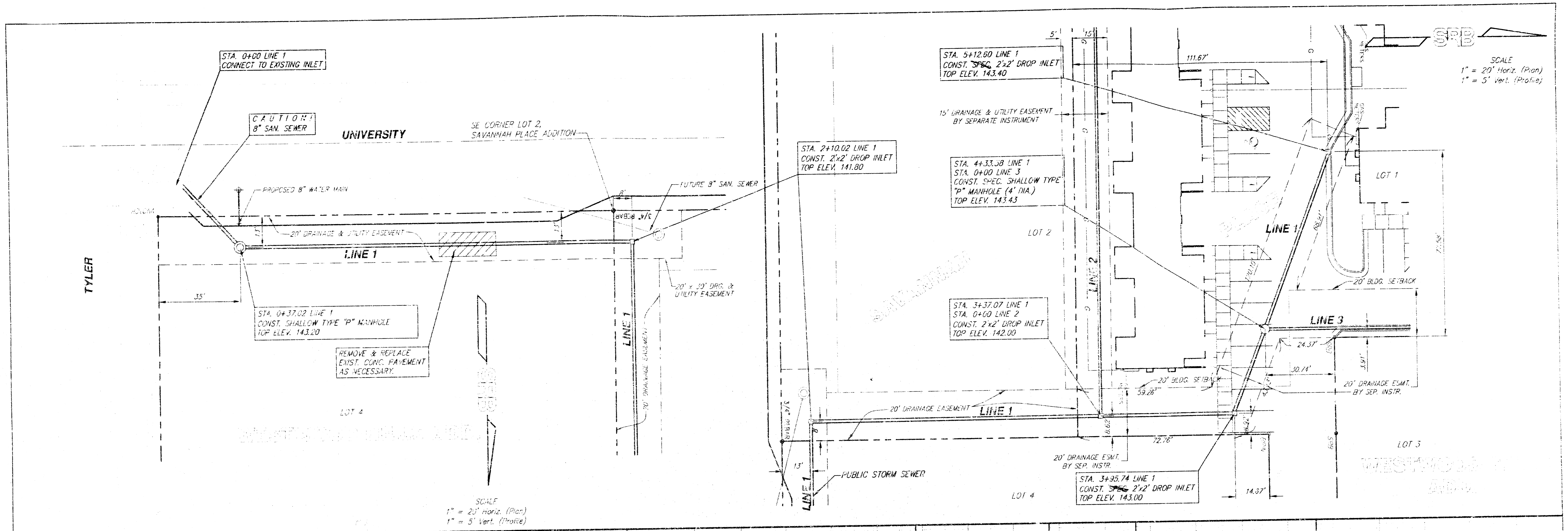
CITY OF WICHITA, KANSAS
MICHAEL E. LINDEBAK, P.E. - CITY ENGINEER

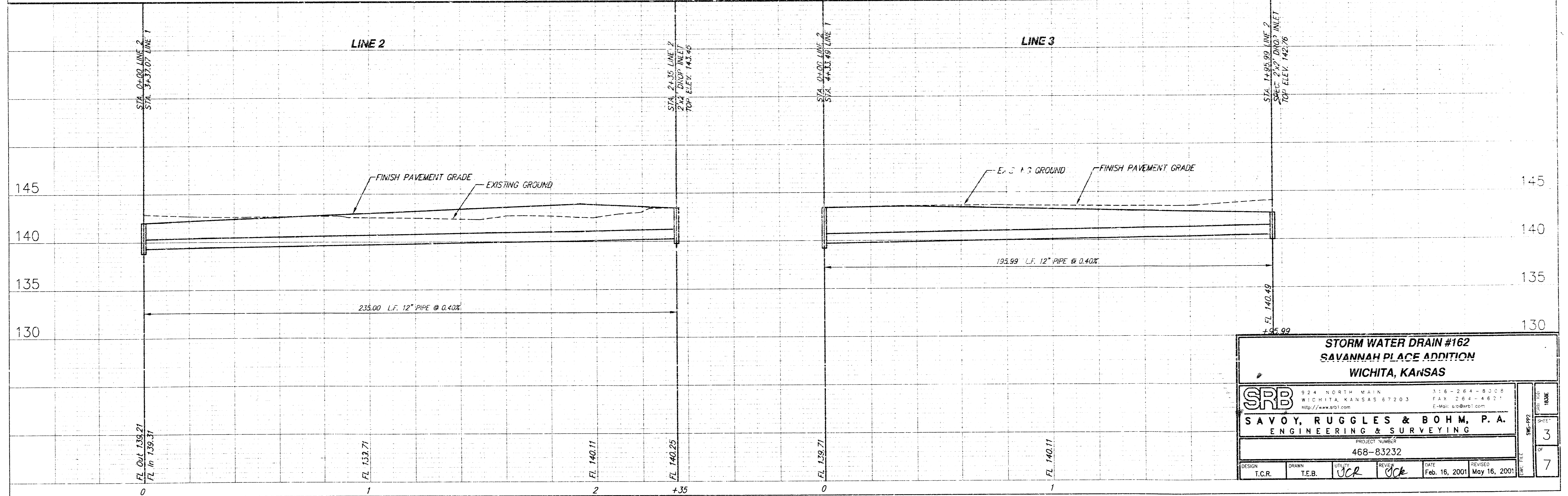
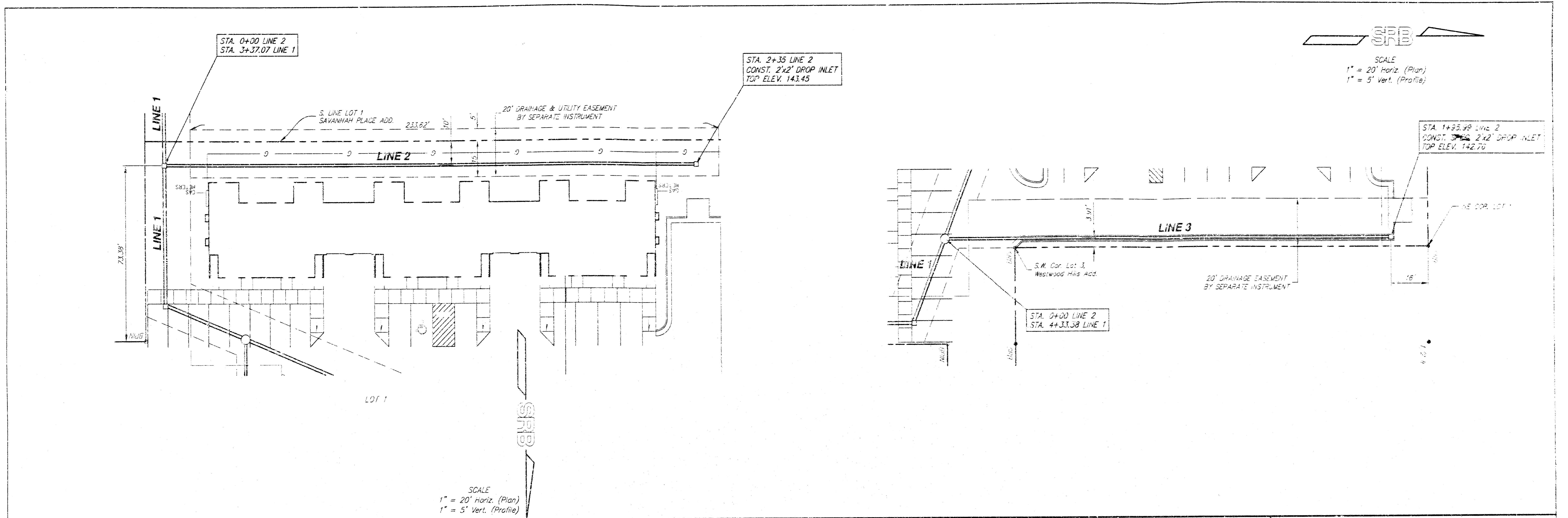


"AS BUILT"

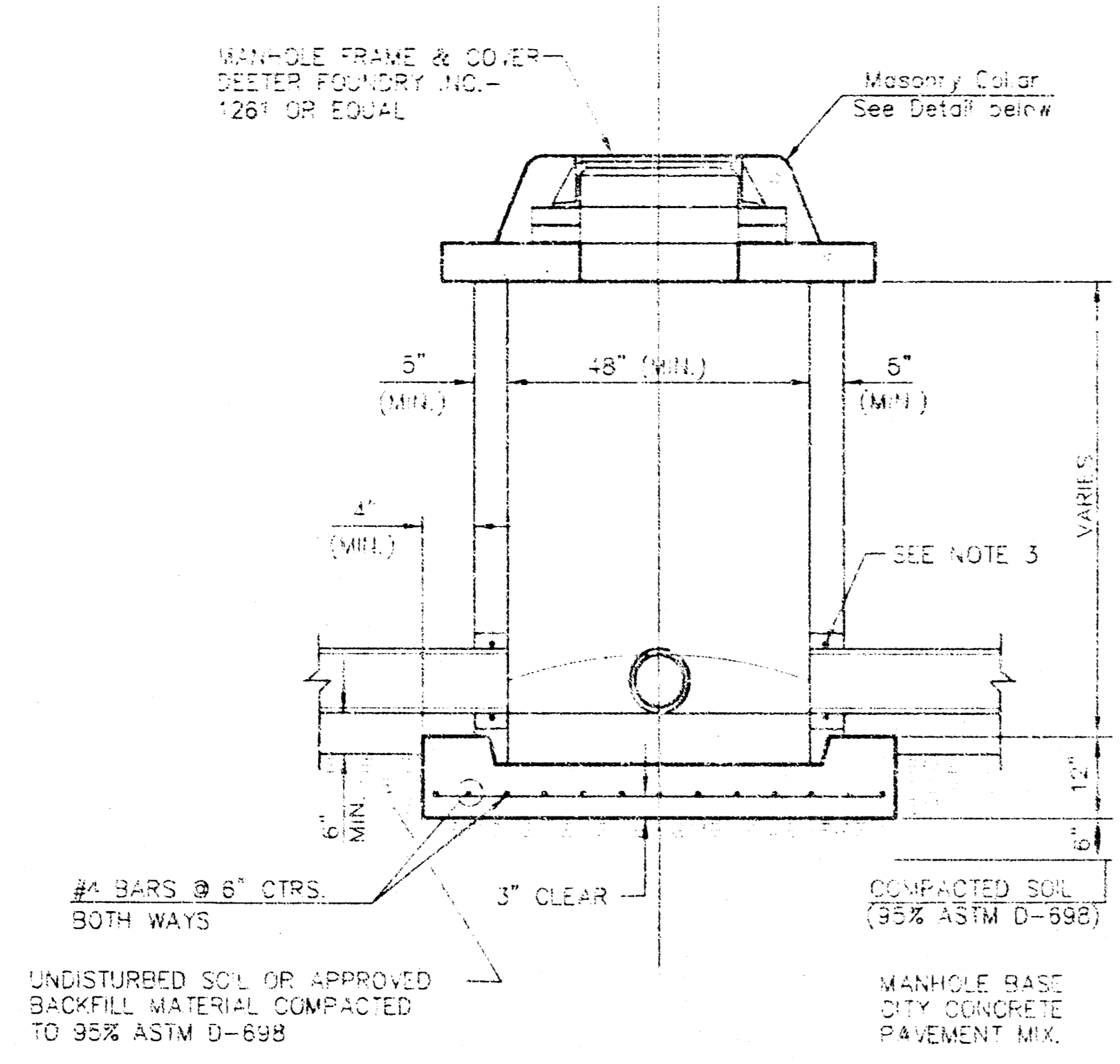
ef/ef

SRB 924 NORTH MAIN 316-281-8000
WICHITA, KANSAS 67203 FAX 316-281-4821
SAVOY, RUGGLES & BOHM, P. A.
ENGINEERING & SURVEYING

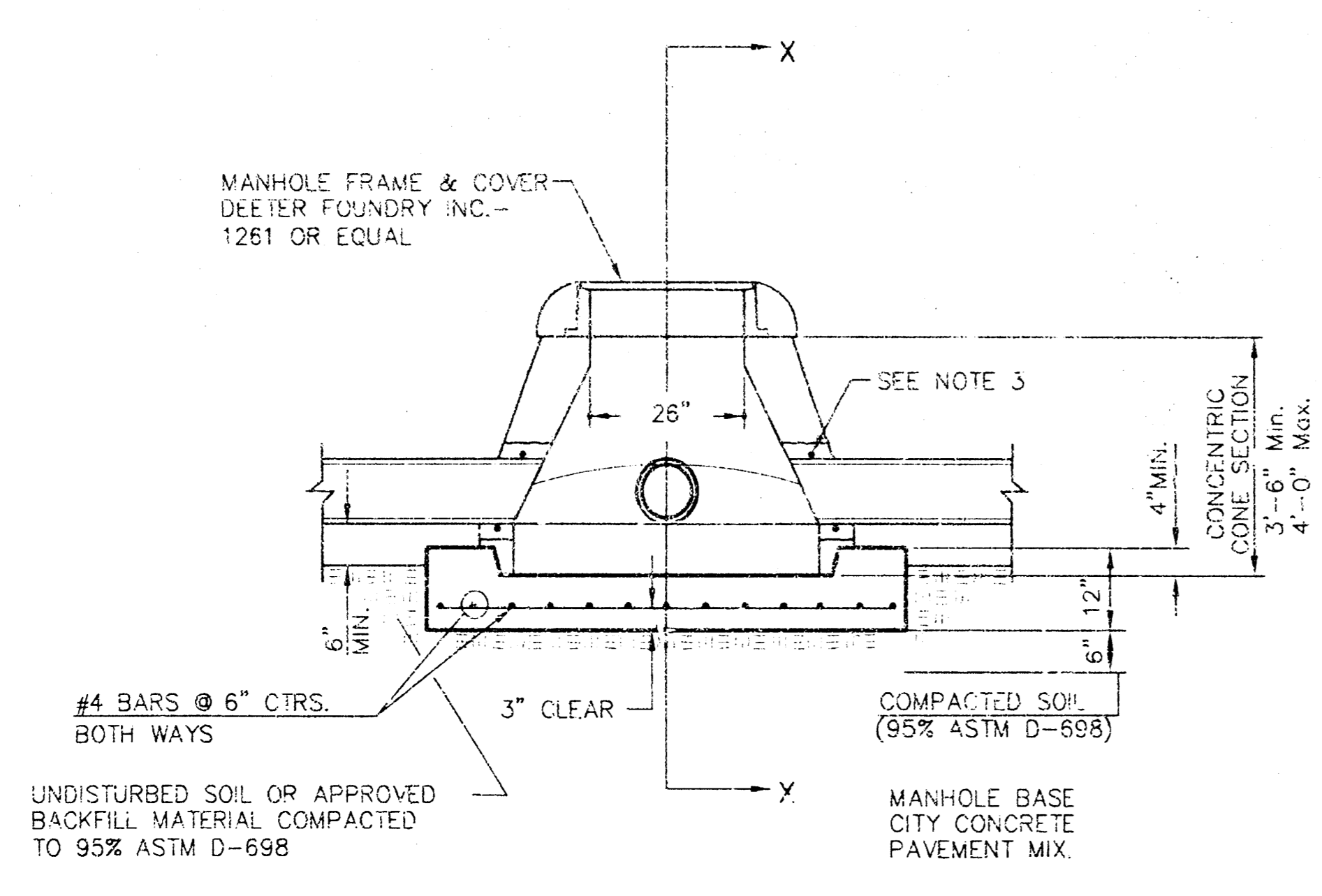




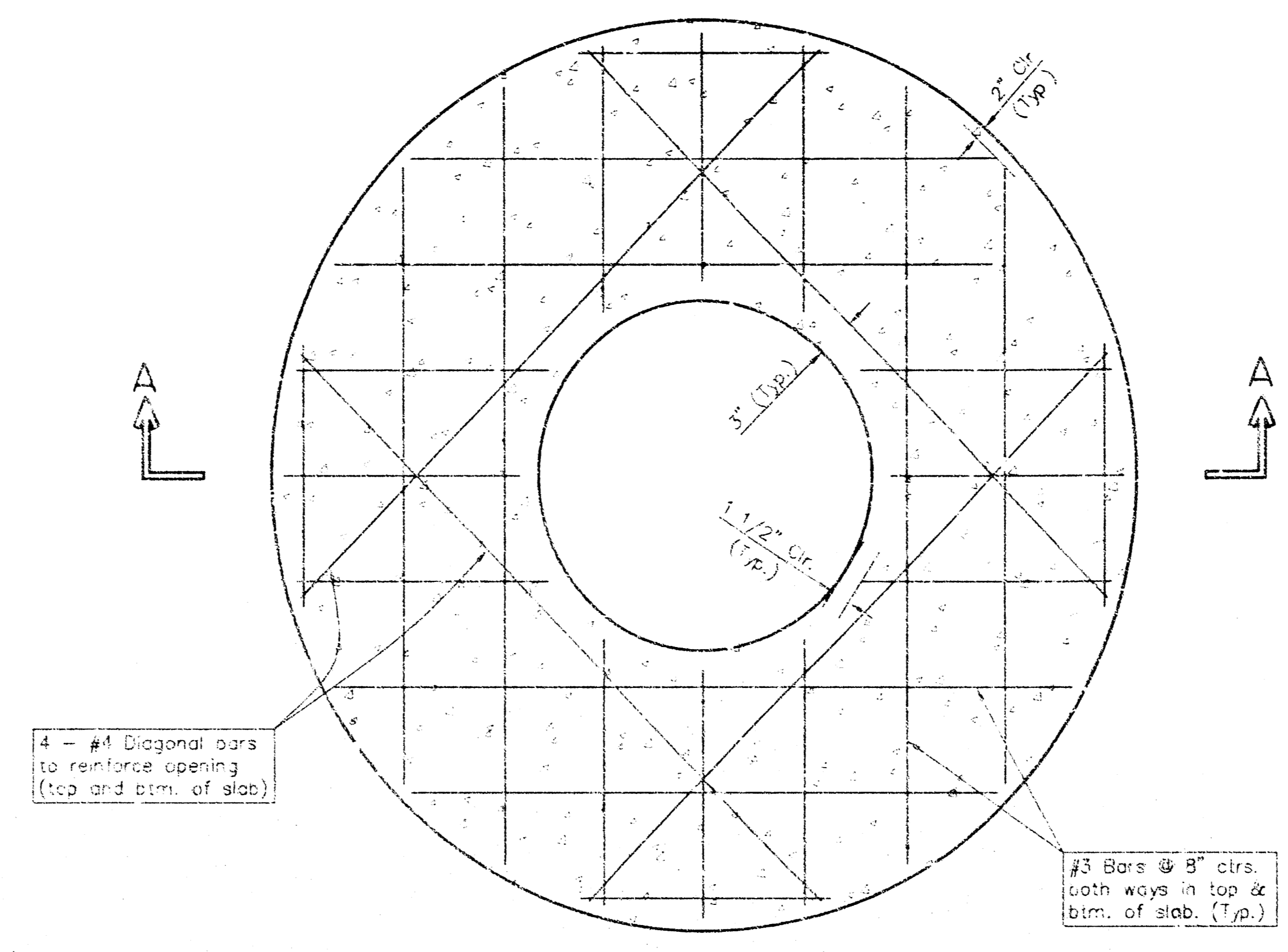
SRB			
224 NORTH MAIN WICHITA, KANSAS 67203 http://www.srb1.com		316-264-8008 FAX 264-4621 E-Mail: srb@srb1.com	
SAVOY, RUGGLES & BOHM, P. A. ENGINEERING & SURVEYING			
PROJECT NUMBER 468-83232			
DESIGN T.C.R.	DRAWN T.E.B.	UTILITY WCR	REVIEW JCK
DATE Feb. 16, 2001		REVISED May 16, 2001	
SHEET TITLE 3			OF 7



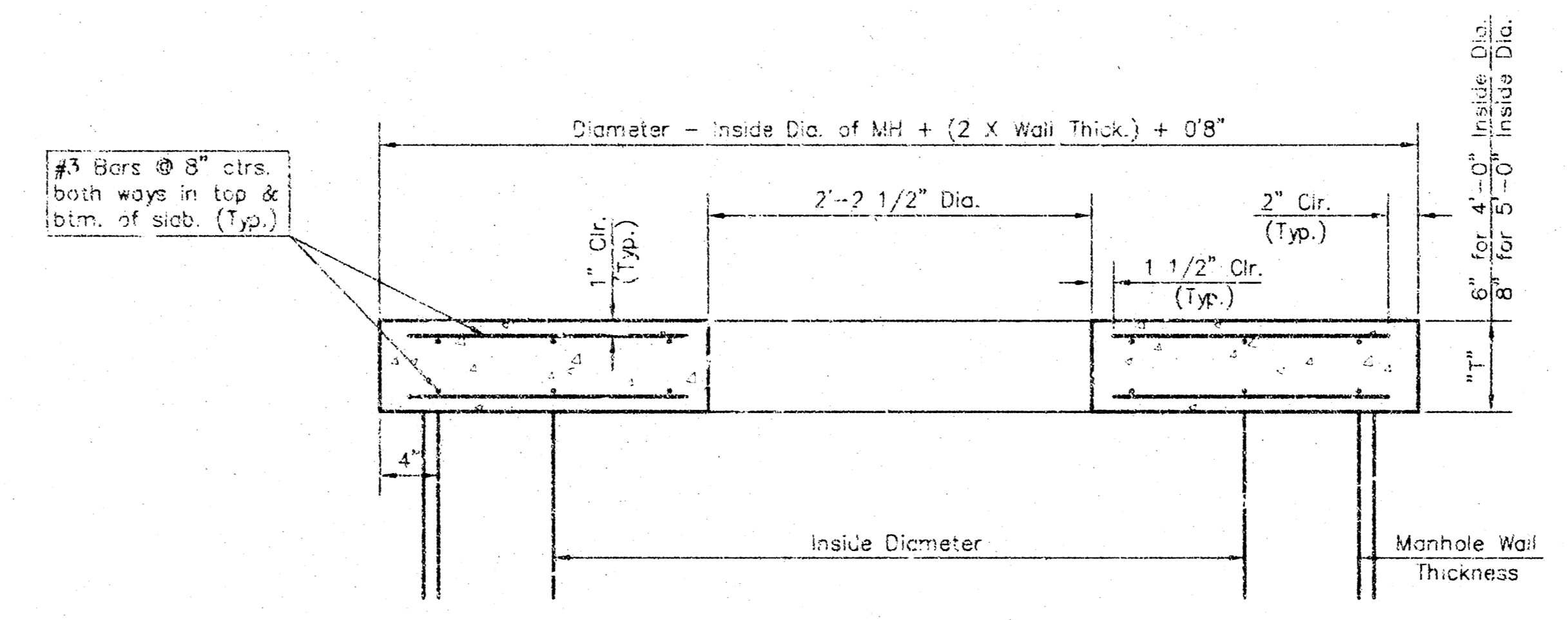
SHALLOW TYPE "P" MANHOLE



SPECIAL SHALLOW TYPE "P" MANHOLE

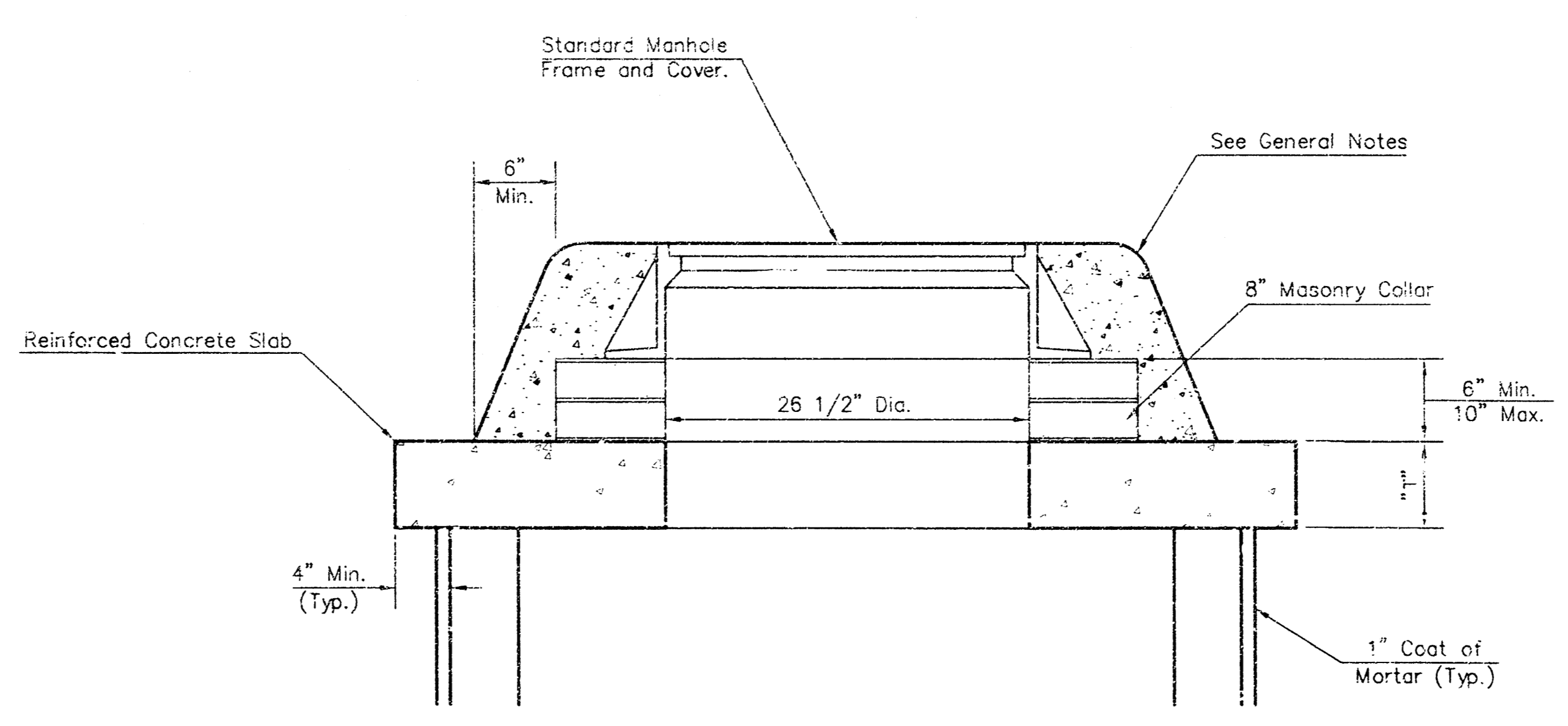


PLAN



SECTION A-A

CONCRETE SLAB DETAILS

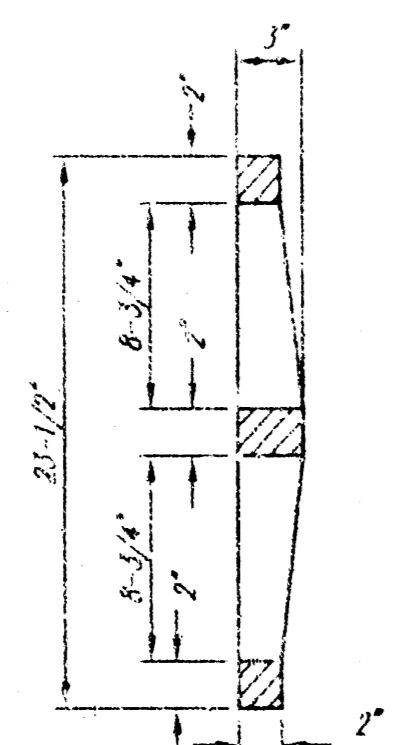
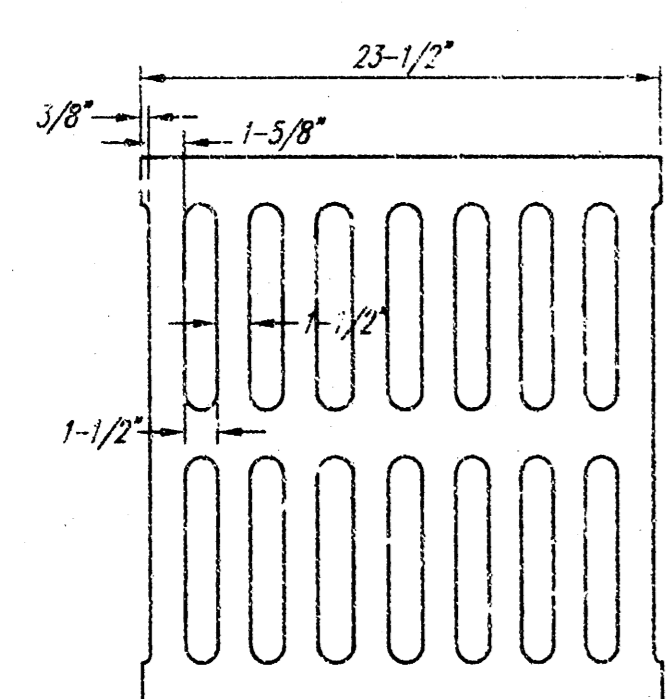
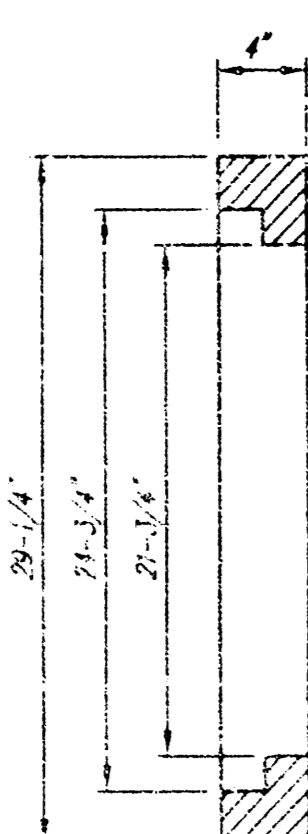
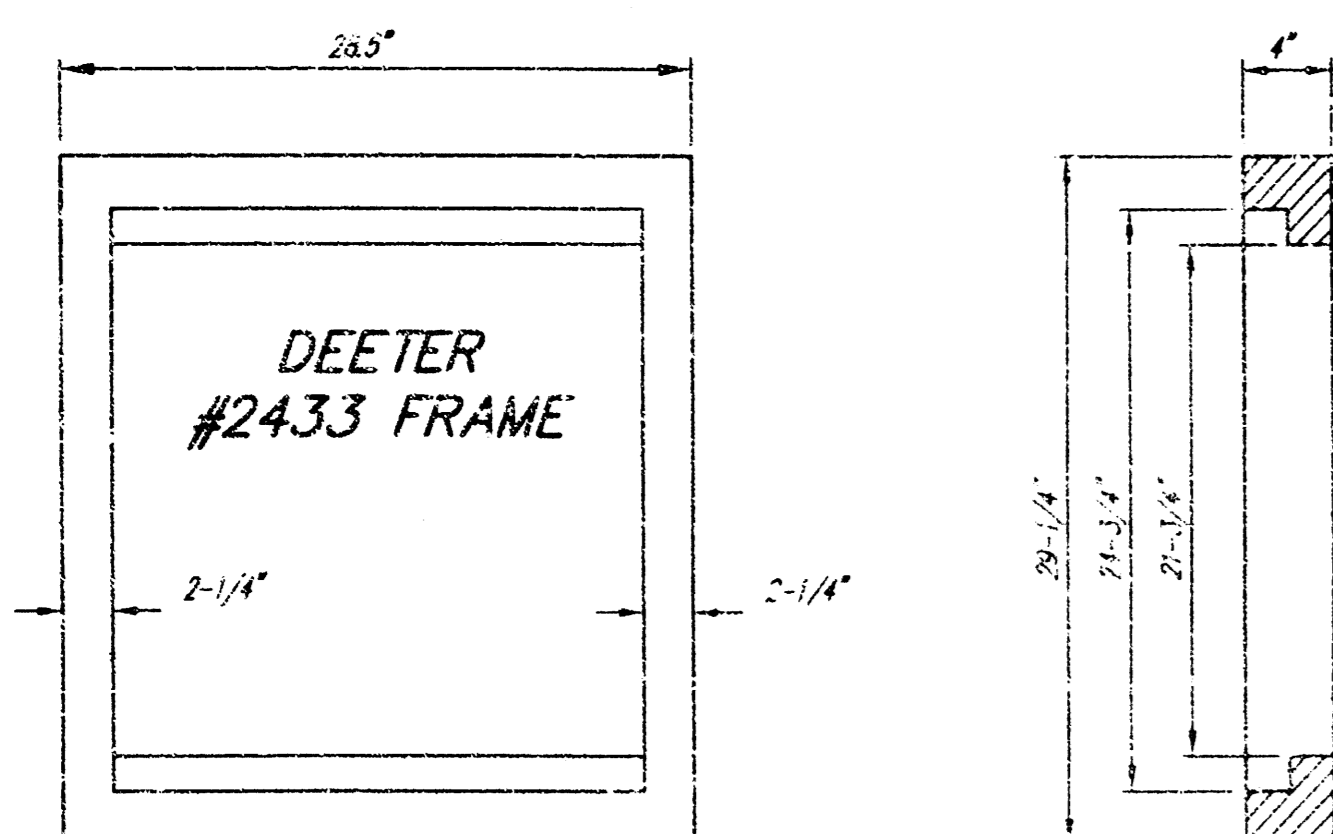


MASONRY COLLAR DETAIL

GENERAL NOTES

1. ALL PRECAST CONCRETE MANHOLE SECTIONS SHALL CONFORM TO THE LATEST REVISIONS OF A.S.T.M. C478 AS MODIFIED BY THE SPECIFICATIONS.
2. NON-SHRINK GROUT SHALL BE NON-METALLIC TYPE.
3. APPROVED FLEXIBLE WATERSTOP GASKETS SHALL BE INSTALLED TO JOIN THE SEWER TO THE MANHOLE WALL WHEN A.B.S. COMPOSITE PIPE OR P.V.C. PIPE IS USED. FOR OTHER TYPES OF PIPE THE SEWER SHALL BE GROUTED IN PLACE WITH NON-SHRINK GROUT. THE SEWER PIPE SHALL BE SUPPORTED WITH CONCRETE ENCASEMENT A MINIMUM OF 3 FEET FROM THE MANHOLE WALL AND TO THE FIRST JOINT FOR V.C.P. SUCH THAT THE JOINT REMAINS FLEXIBLE.
4. ALL INSIDE SURFACES OF THE CONCRETE MANHOLE WHICH WOULD BE EXPOSED TO SEWER GAS SHALL BE COATED WITH 2 COATS OF MEMB SERIES 66 HI-BUILD EPOXYLINE, DRY THICKNESS OF 8 MILS (MIN).
5. EXTERIOR MANHOLE WALLS SHALL BE COATED WITH 1 COAT MOBILARMA 533 BITUMINOUS COATING.
6. JOINT SEALING COMPOUND SHALL BE FENT SEAL NO. 2 OR APPROVED EQUAL.
7. PRECAST MANHOLES SHALL BE SET AT LEAST 4 INCHES INTO THE MANHOLE BASE.
8. TOP OF MANHOLE FLOOR SLAB SHALL BE AT LEAST 3 INCHES BELOW THE FLOW LINE OF THE OUTLET PIPE TO INSURE SUFFICIENT MINIMUM THICKNESS OF SHAPED INVERT.
9. LIFTING HOLES SHALL BE FILLED WITH NON-SHRINK GROUT AND THE INTERIOR SURFACE COATED AS SPECIFIED.
10. MORTAR USED IN MASONRY CONSTRUCTION SHALL CONTAIN 9 BAGS OF CEMENT PER CUBIC YARD. CONCRETE USED IN MANHOLE BASES SHALL CONFORM TO THE REQUIREMENTS OF CONCRETE FOR CONCRETE PAVEMENT CONSTRUCTION AS SPECIFIED IN THE CITY STANDARD PAVING SPECIFICATIONS USING CITY CONCRETE PAVEMENT MIX WITH 10% ENTRAINING ADMIXTURE. MORTAR SHALL BE PLACED AROUND THE MANHOLE RING AS SHOWN ON THE DRAWINGS WHEN MANHOLES ARE CONSTRUCTED IN UNPAVED AREAS. MANHOLES CONSTRUCTED WHERE PIPE SIZES ARE SMALLER THAN 24" SHALL HAVE AN INSIDE DIAMETER OF 4". MANHOLES CONSTRUCTED WHERE PIPE SIZES ARE 24" OR LARGER SHALL HAVE AN INSIDE DIAMETER OF 5". COMPLETED MANHOLE SHALL BE WITHOUT LEAKS AND WATER TIGHT.
11. REINFORCING STEEL SHALL BE INSTALLED IN THE MANHOLE BASES AND SHALL CONSIST OF NO. 4 BARS PLACED ON 6" CENTERS IN BOTH DIRECTIONS. THE MANHOLE BASE REINFORCEMENT SHALL BE PLACED AT LEAST 3" ABOVE THE BOTTOM OF THE MANHOLE BASE. ALL COSTS FOR FURNISHING AND INSTALLING REINFORCING STEEL SHALL BE INCLUDED IN THE UNIT PRICE BID FOR THE MANHOLE.
12. THE FLOORS OF ALL MANHOLES SHALL BE SHAPED WITH FLOW CHANNELS SUCH THAT THE MANHOLES WILL BE SELF CLEANING AND FREE OF AREAS WHERE SOLIDS COULD BE DEPOSITED AS SEWAGE FLOWS THROUGH THE MANHOLE FROM ALL INLET PIPES TO THE OUTLET PIPE. FLOW CHANNELS SHALL BE FORMED TO MATCH THE BOTTOM HALVES OF THE INFLOWING PIPES AND THE OUTFLOWING PIPE AS SHOWN BY THE DRAWINGS EXCEPT FOR INSIDE DROP MANHOLES. FLOW CHANNELS FOR INSIDE DROP MANHOLES SHALL BE CONSTRUCTED AS INDICATED BY THE DRAWING. MANHOLE FLOORS SHALL HAVE SLOPES OF 3 INCHES PER FOOT IN THE AREAS OUTSIDE OF THE FLOW CHANNELS SLOPED TOWARD THE FLOW CHANNELS. PIPES LAID THROUGH MANHOLES SHALL HAVE THE TOP HALF REMOVED TO NEAT LINES FOR THE FULL INSIDE DIAMETER OF THE MANHOLE. MANHOLE FLOORS SHALL THEN BE SHAPED AROUND THE BOTTOM HALF OF THE PIPE WHICH FORMS THE FLOW CHANNEL.
13. PIPES INSTALLED WITHIN THE EXCAVATION MADE FOR THE MANHOLE SHALL BE CRADLED WITH CONCRETE TO THE LIMITS OF THE MANHOLE EXCAVATION. WHEN CLAY PIPE IS USED, THE CRADLE SHALL EXTEND TO THE FIRST JOINT OUTSIDE THE MANHOLE. THE CRADLE SHALL BE TERMINATED AT THE CLAY PIPE JOINT IN A MANNER WHICH WILL MAINTAIN THE FLEXIBILITY OF THE JOINT. COST OF CRADLE WITHIN MANHOLE EXCAVATION OR TO CLAY PIPE JOINTS ADJACENT TO MANHOLE SHALL BE INCLUDED IN THE UNIT PRICE BID FOR THE MANHOLE.
14. MANHOLE COVER CASTINGS AND MANHOLE FRAME CASTINGS SHALL CONFORM TO THE REQUIREMENTS AS INDICATED IN THE STANDARD SPECIFICATIONS AND AS SHOWN IN THE STANDARD DETAIL DRAWING.
15. ALL BRICK USED IN MANHOLE CONSTRUCTION SHALL MEET GRADE SW OF ASTM C652 OR C62-87.

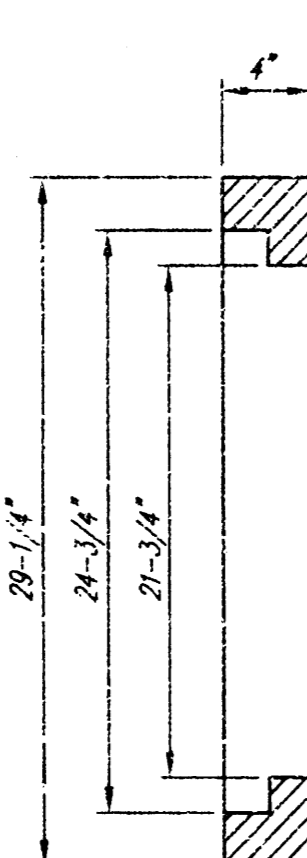
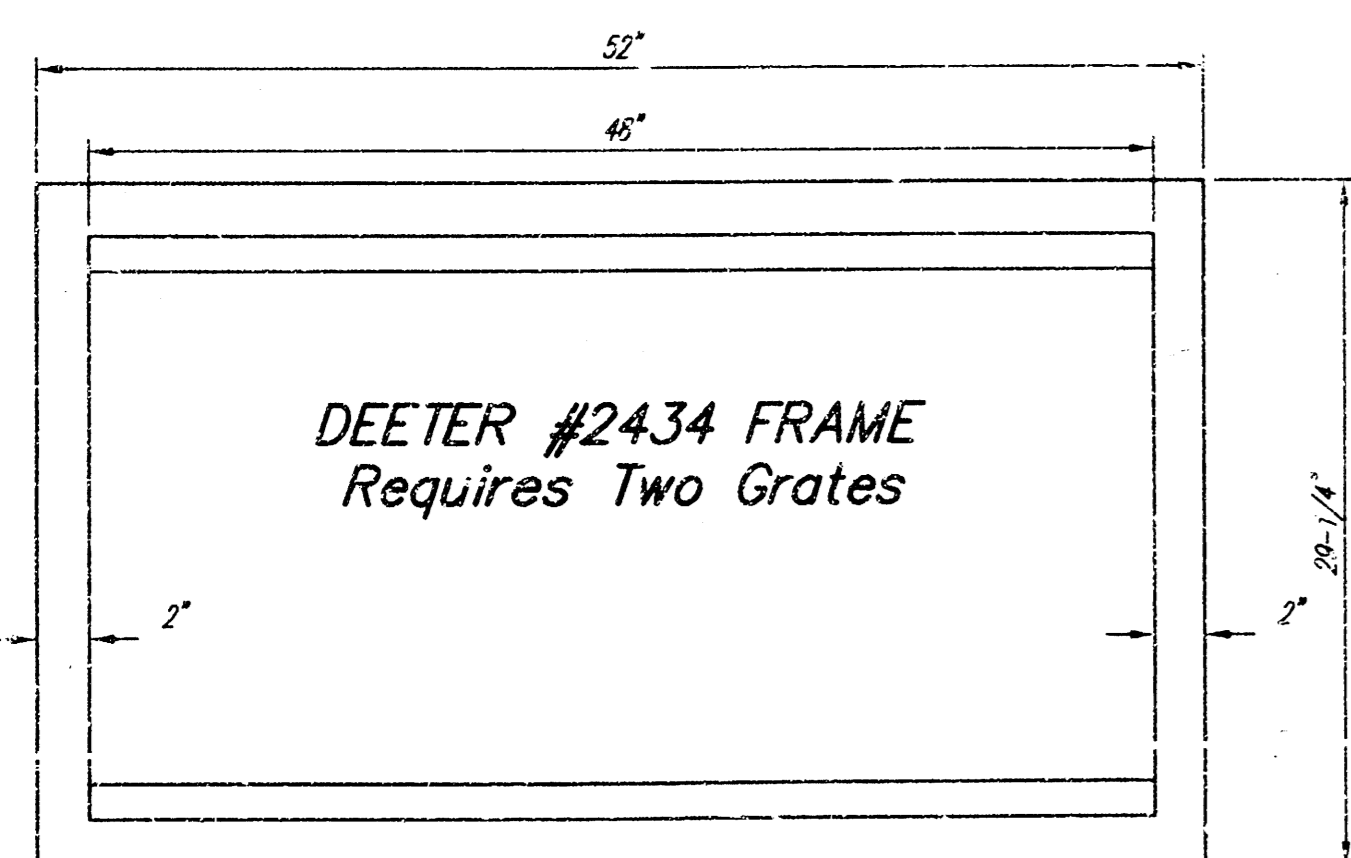
SHALLOW TYPE 'P' MANHOLE DETAILS			
WICHITA, KANSAS			
SRB	824 NORTH MAIN	316-264-8008	DATE: 4
	WICHITA, KANSAS 67203	FAX 316-264-4721	
SAVOY, RUGGLES & BOHM, P.A.			OF 7
ENGINEERING & SURVEYING			
PROJECT NUMBER: 468-83232			
DESIGN	DRAWN	DATE: 6-31-01	REVISION



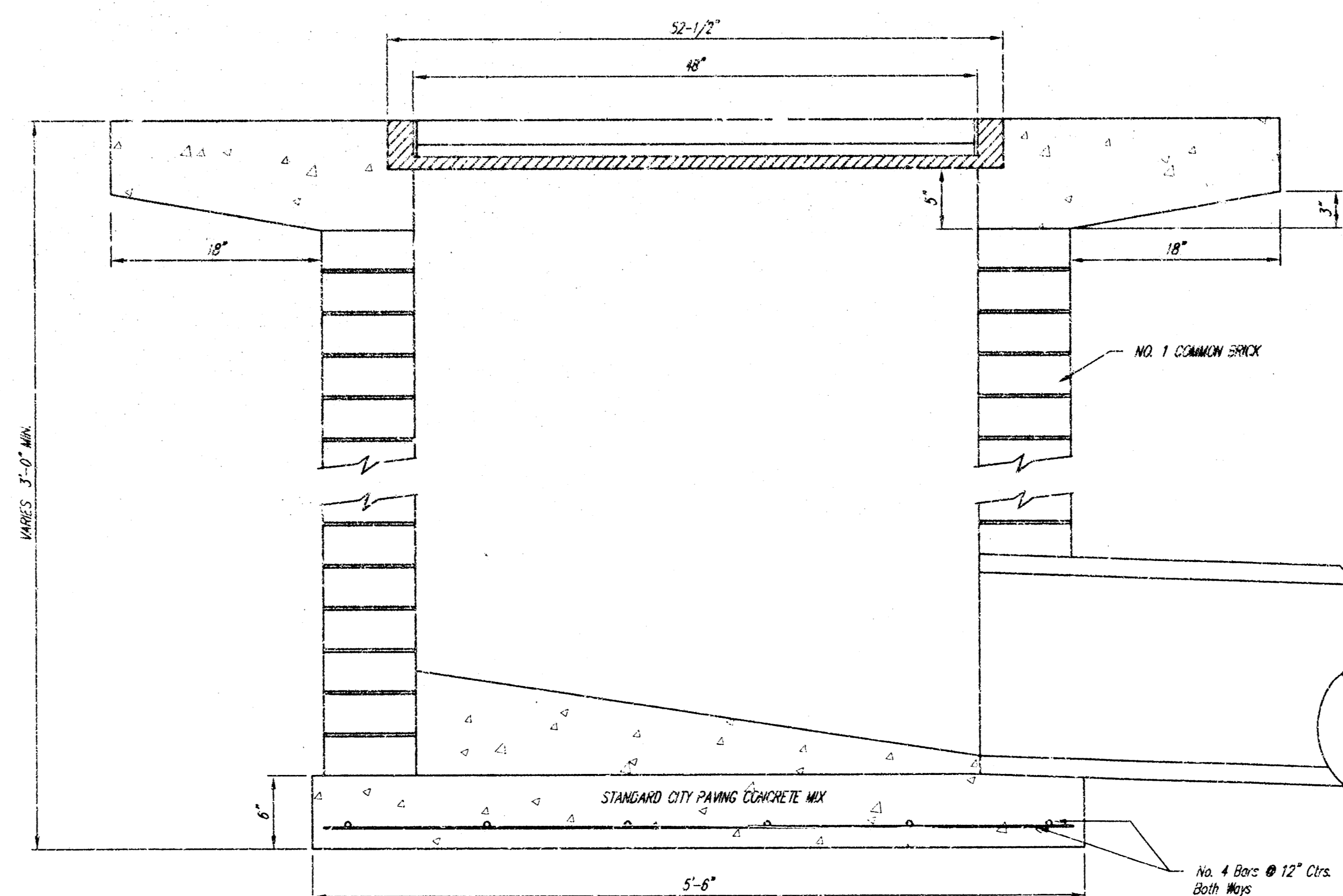
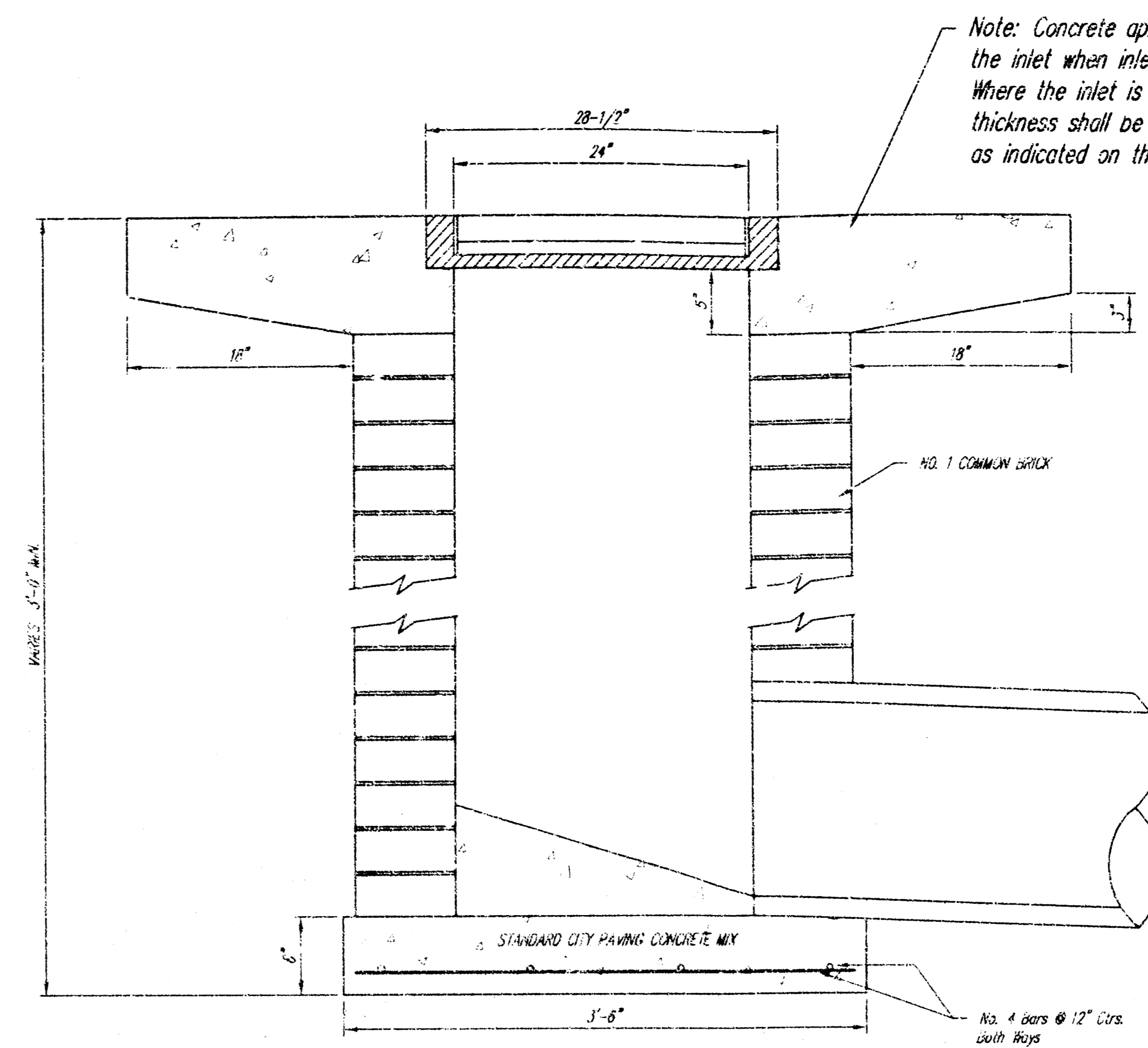
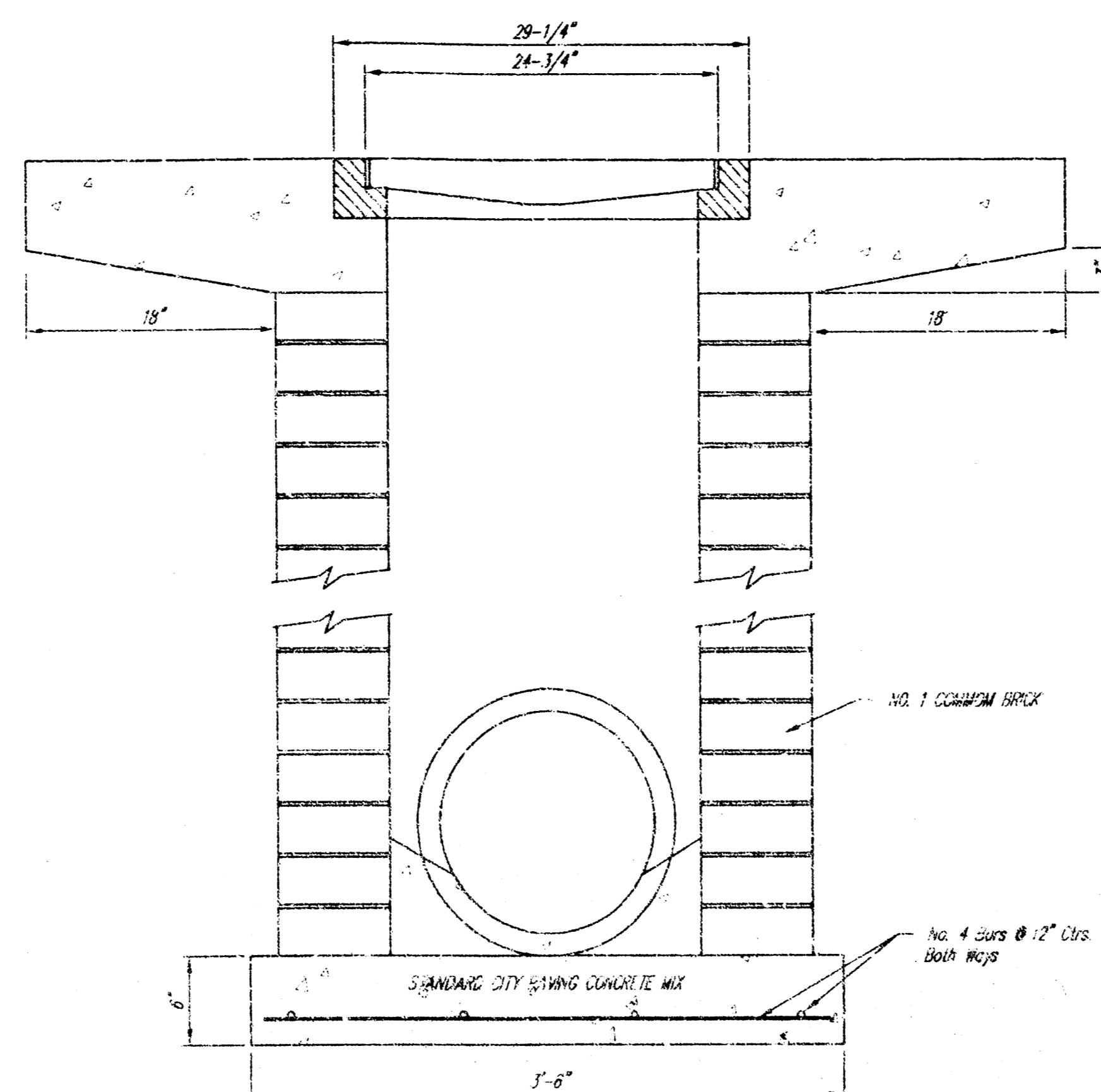
NOTE: Grates shall be imprinted on the top surface with "CITY OF WICHITA" using letters at least 1" in height. Other marking methods may be approved by the engineer.

DEETER #2433 GRATE

24" x 24" Frame and Grate Detail



Double 24" x 24" Frame Detail



<p>THE CITY OF WICHITA</p> <p>CITY ENGINEER'S OFFICE CITY HALL - SEVENTH FLOOR 455 NORTH MAIN STREET WICHITA, KANSAS 67202 (316) 268-4001 (316) 268-4114 FAX</p>	<p>DROP INLET 2'x2' / 2'x4'</p>	
	<p>M. E. LINDEBAK P.E. - CITY ENGINEER 168-83232 751296</p>	
	<p>PROJECT NUMBER</p>	<p>DIST. #</p>
	<p>DATE MAR 96</p>	<p>SHEET 6 OF 7</p>

SAVANNAH PLACE ADDITION

WICHITA, SEDGWICK COUNTY, KANSAS

State of Kansas) SS
Sedgwick County)

This plat of "SAVANNAH PLACE ADDITION", Wichita, Sedgwick County, Kansas, has been submitted to and approved by the Wichita-Sedgwick County Metropolitan Area Planning Commission, Wichita, Kansas.

Dated this _____ day of _____, 2000.

Wichita-Sedgwick County Metropolitan Area Planning Commission

Christopher S. Carraher
Chairman

Marvin S. Krout
Secretary

We, Savoy, Ruggles & Bohm, P.A., Surveyors in aforesaid county and state do hereby certify that, under the supervision of the undersigned, we have surveyed and platted "SAVANNAH PLACE ADDITION", Wichita, Sedgwick County, Kansas and that the accompanying plat is a true and correct exhibit of the property surveyed, described as and being a replat of the following:

Lots 1 and 2, Westwood Hills 3rd Addition, Wichita, Sedgwick County, Kansas.

All being situated in the NE1/4 of Sec. 29, Twp. 27-S, R-1-W of the 6th P.M., Sedgwick County, Kansas.

Existing Public easements and dedications being vacated by virtue of K.S.A. 12-512(b).

Savoy, Ruggles & Bohm, P.A.

Date _____
Mark A. Savoy RLS #188
Surveyor

This plat approved and all dedications shown hereon, accepted by the City Council of the City of Wichita, Kansas, this _____ day of _____, 2001.

Bob Knight
Mayor

Pat Burnett
City Clerk

Reviewed in accordance with K.S.A. 58-2005 on this _____ day of _____, 2001.

Tricia L. Robello, LS #1246
Deputy County Surveyor
Sedgwick County Kansas

Entered on transfer record this _____ day of _____, 2001.

Don Brace
County Clerk

State of Kansas) SS
Sedgwick County)

This is to certify that this plat has been filed for record in the office of the Register of Deeds, this _____ day of _____, 2001, at _____ o'clock _____ M. and is duly recorded.

Bill Meek
Register of Deeds

Linda Kizzire
Deputy

State of Kansas) SS
Sedgwick County)

The foregoing instrument acknowledged before me, this _____ day of _____, 2001, by Chris A. Anderson, Branch President, of First National Bank of Conway Springs, on behalf of the Bank.

My App'l. Exp. _____
Notary Public

State of Kansas) SS
Sedgwick County)

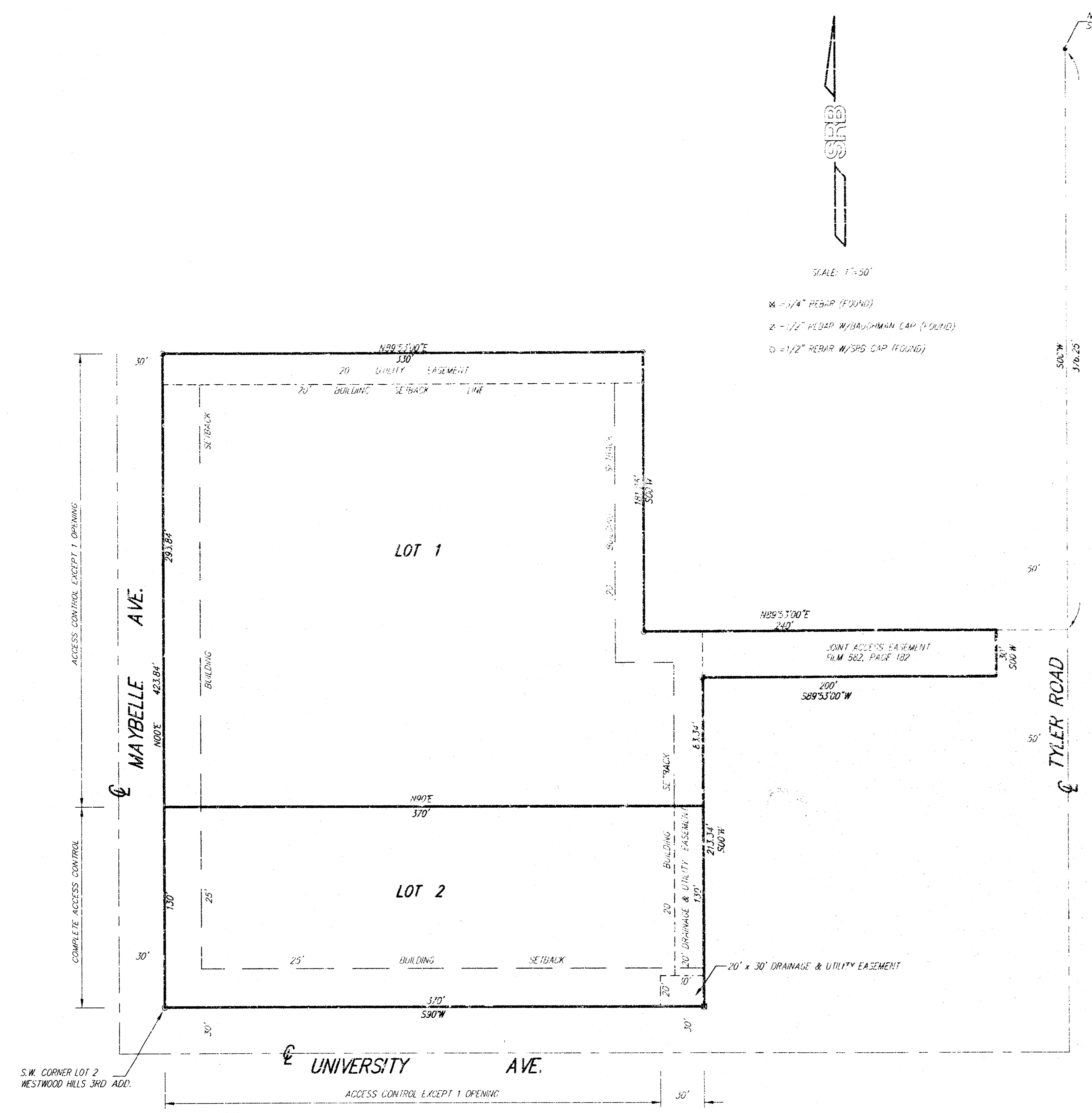
The foregoing instrument acknowledged before me, this _____ day of 2000, by Bryan Lagaly, Robert Armstrong, Gerry Cook, and Thomas St. Peter, all being Members of Brian Lagaly Development L.L.C., a Kansas limited liability company, on behalf of the company, serving as manager of Savannah Place Apartments, L.L.C., a Kansas limited liability company.

Notary Public
My App'l. Exp. _____

We, the undersigned, holders of a mortgage on the above described property do hereby consent to this plat of "SAVANNAH PLACE ADDITION", Wichita, Sedgwick County, Kansas.

First National Bank of Conway Springs

Chris A. Anderson
Branch President



NOTE: THIS PLAT IS SUBJECT TO THE REQUIREMENTS SET FORTH ON THE REVISION WESTWOOD HILLS COMMUNITY UNIT PLAN D.P.-97