

GRADING PLANS FOR FOX RIDGE ADDITION

PHASE 1
SWD #206
PROJECT NO. 468-83651
OCA 751341

GRADING PLANS FOR FOX RIDGE ADDITION

PHASE 1a
SWD #210
PROJECT NO. 468-83670
OCA 751343

CITY OF WICHITA, KANSAS
NEIL D. CABLE, CITY ENGINEER

GRADING PLANS FOR FOX RIDGE ADDITION

PHASE 1b
SWD #211
PROJECT NO. 468-83671
OCA 751344

EARTHWORK SUMMARY	
PHASE 1	
EXCAVATION	167,000 C.Y.
90% COMPACTED FILL	130,000 C.Y.
55% COMPACTED FILL	20,000 C.Y.
ADD ALTERNATE #1	
EXCAVATION	23,000 C.Y.
COMPACTED FILL	12,500 C.Y.

NOTE: 15% HAS BEEN ADDED TO FILL QUANTITIES TO ALLOW FOR COMPACTION.

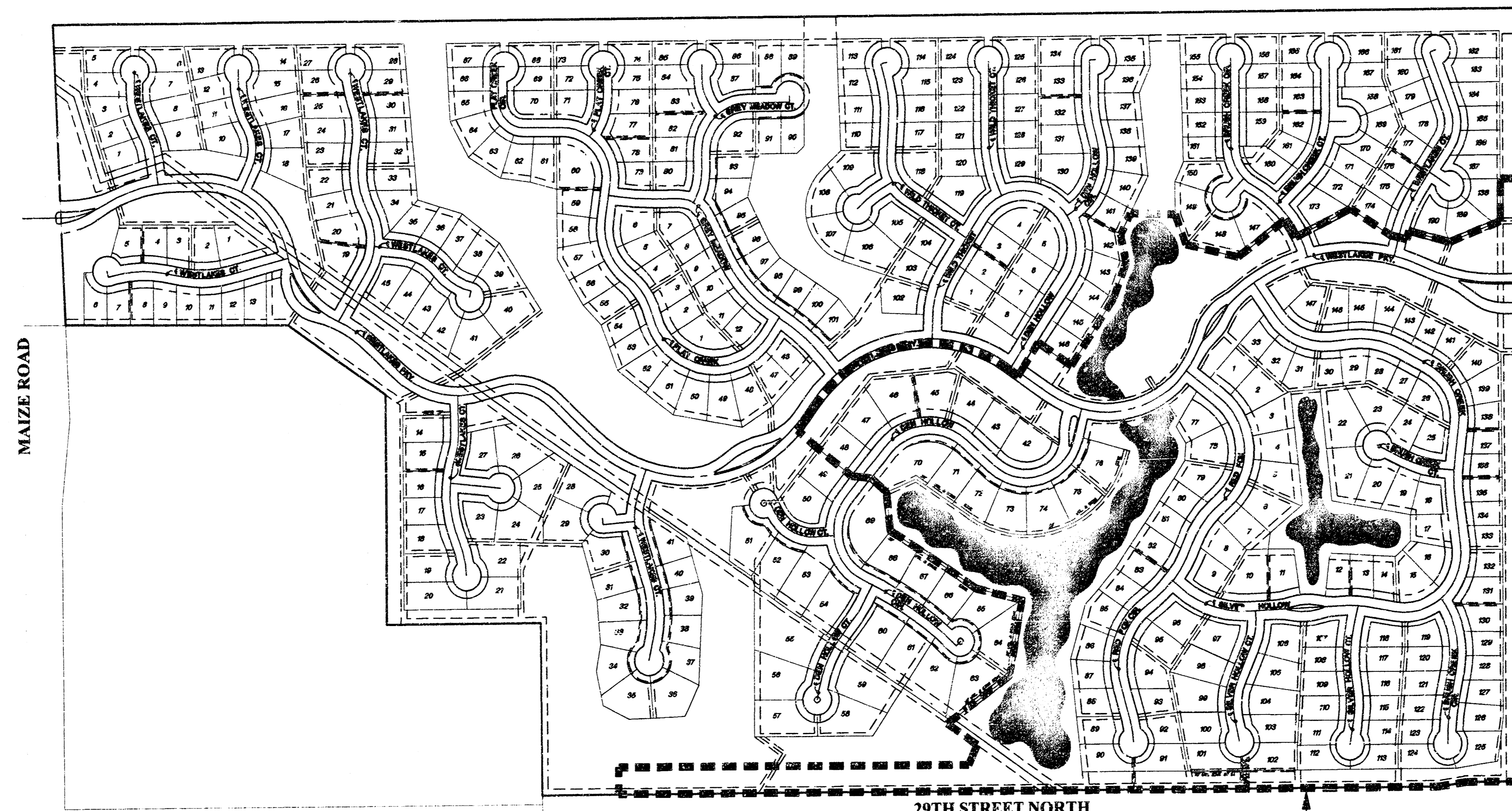
GENERAL NOTES

- THE TOPS OF INLETS AND MANHOLES AS NOTED ON THE PLANS MAY VARY SO AS TO MEET PROPOSED TOP OF CURB ELEVATIONS OR PAVEMENT ELEVATIONS. THE FIELD ENGINEER SHALL LOCATE INLETS AND MANHOLES WITH REFERENCE TO PROPOSED PAVING PLANS OF THE PERTINENT STREETS.
- THE CONTRACTOR SHALL BE RESPONSIBLE FOR PRESERVING PROPERTY IRONS. THE CONTRACTOR SHALL BE REQUIRED TO RE-ESTABLISH ANY PROPERTY IRONS WHICH ARE DAMAGED OR DESTROYED BY HIS CONSTRUCTION OPERATIONS. SUCH IRONS SHALL BE RE-ESTABLISHED BY A LICENSED LAND SURVEYOR IN ACCORDANCE WITH STATE LAWS.
- CONTRACTOR SHALL NOTIFY UTILITY COMPANIES OF CONSTRUCTION SCHEDULING.
- EXISTING UTILITIES AND THEIR LOCATIONS, AS SHOWN ON THE PLANS REPRESENT THE BEST INFORMATION OBTAINABLE FOR DESIGN. LOCATION INFORMATION HAS BEEN OBTAINED FROM THE VARIOUS COMPANIES AND IS EITHER FROM COMPANY UTILITY DRAWINGS OR COMPANY PROVIDED FIELD LOCATIONS. THE PLAN LOCATIONS SHOWN ARE NOT GUARANTEED. ADDITIONAL EXISTING UTILITIES MAY ALSO BE ENCOUNTERED.
- CONTRACTOR WILL BE REQUIRED TO PROVIDE A MINIMUM ADVANCE NOTICE OF FORTY-EIGHT (48) HOURS TO UTILITY COMPANIES TO STARTING ANY EXCAVATION AS FOLLOWS:
KANSAS ONE-CALL 687-2470 (LOCAL WICHITA)

THE CONTRACTOR MUST NOTIFY THE FOLLOWING IN CASE OF EMERGENCY:

COX COMMUNICATION	263-0661
WESTAR ENERGY	261-6512
SBC	1-800-870-8390
CITY OF WICHITA WATER & SEWER	262-6000
AQUILA ENERGY PIPELINE	1-800-303-0752
KANSAS GAS SERVICE	832-3101

- RUBBLE FROM THE REMOVAL OF MISCELLANEOUS STRUCTURES AND EXCESS EXCAVATION WHICH IS TO BE WASTED SHALL BE DISPOSED OF ON SITES TO BE PROVIDED BY THE CONTRACTOR. THESE SITES SHALL BE APPROVED BY THE ENGINEER AS TO SUITABILITY, APPEARANCE AND SITE LOCATION. LOCATIONS THAT, IN THE OPINION OF THE ENGINEER, WILL LEAVE AN UNSIGHTLY APPEARANCE WILL NOT BE APPROVED. ALL DISPOSAL SITES MUST BE APPROVED BY THE KANSAS DEPARTMENT OF HEALTH AND ENVIRONMENT. MATERIAL EITHER STOCKPILED OR DISPOSED OF IN A FLOOD PLAIN WOULD REQUIRE A KANSAS STATE BOARD OF AGRICULTURE PERMIT. ANY MATERIAL DUMPED IN WATERS OF THE UNITED STATES OR WETLANDS IS SUBJECT TO U.S. CORPS OF ENGINEERS PERMITTING REGULATIONS. ANY MATERIAL BURIED OR STOCKPILED BEYOND APPROVED CONSTRUCTION LIMITS WOULD REQUIRE ADDITIONAL ARCHAEOLOGICAL INVESTIGATIONS UNLESS BURIED IN A PREVIOUSLY APPROVED BORROW LOCATION.
- ALL EARTHWORK COMPACTION SHALL BE 90% STANDARD DENSITY WITH THE EXCEPTION OF RIGHT OF WAY FILL AND CLAY POND LINERS WHICH SHALL BE COMPACTED TO 95% STANDARD DENSITY. CONTRACTOR SHALL PROVIDE TEST RESULTS TO CONFIRM COMPACTION.
- OTHER PUBLIC IMPROVEMENT CONSTRUCTION PROJECTS MAY BE UNDER WAY SIMULTANEOUSLY. THE CONTRACTOR SHALL COORDINATE WITH ANY CONTRACTORS CONSTRUCTING OTHER PORTIONS OF THE PROJECT.
- HOME BUILDERS WILL HAVE SEVERAL NEW HOMES UNDER CONSTRUCTION ON LOTS SIMULTANEOUSLY WITH THIS WORK. CONTRACTOR SHALL COORDINATE WITH HOME BUILDERS.
- IF FILL MATERIAL RUNS SHORT OF AMOUNT NEEDED, ADDITIONAL EXCAVATION MAY BE TAKEN FROM POND CUTS ON SITE BY DEEPENING ONLY, OR MAY BE FURNISHED BY CONTRACTOR. COORDINATE W/ ENGINEER. COST SUBSIDIARY TO PROJECT.



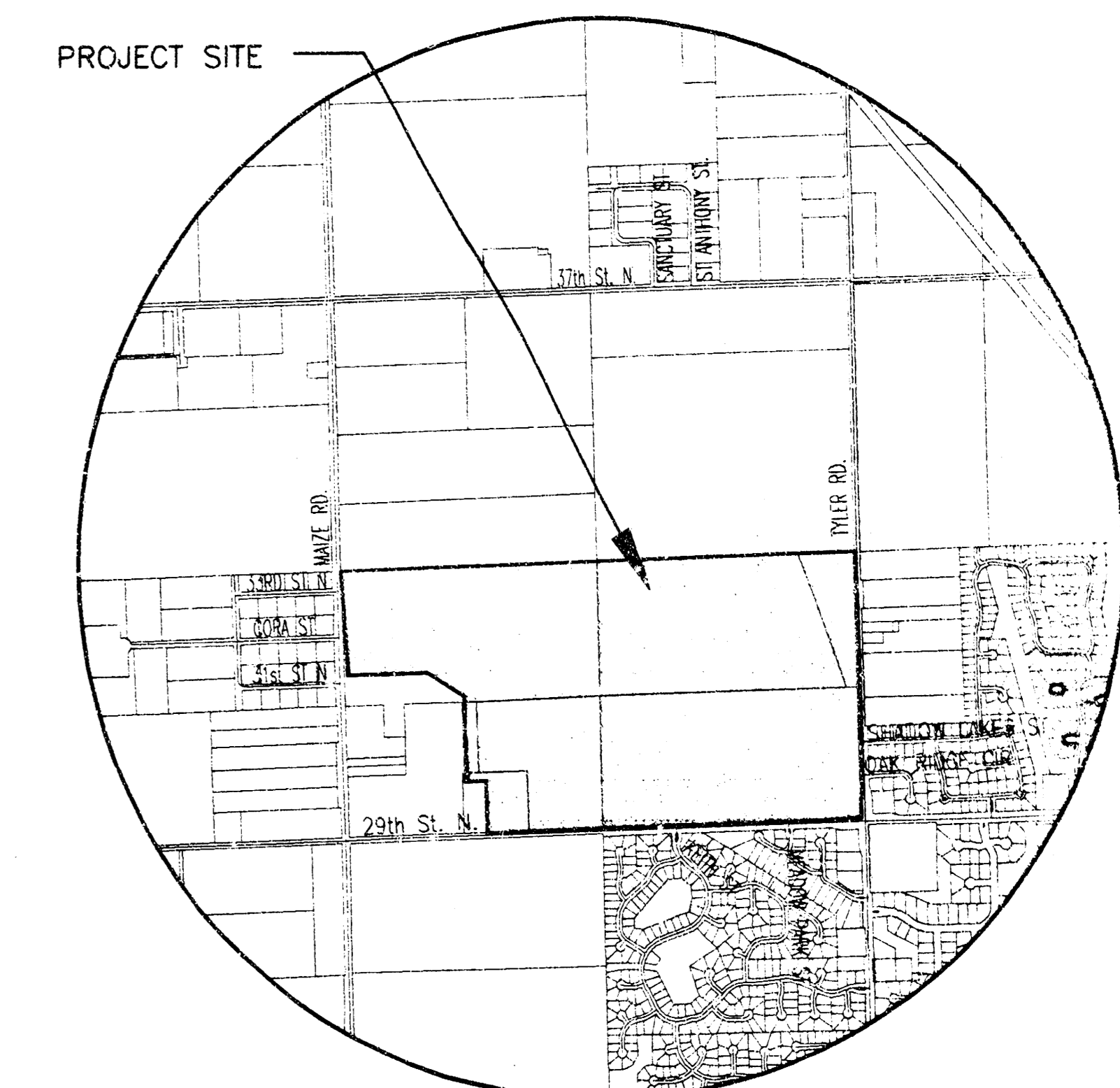
SITE MAP

PROJECT BOUNDARY

- CONTRACTOR SHALL SEED ALL DISTURBED AREAS WITH ANNUAL RYE GRASS. COST SHALL BE SUBSIDIARY TO ADD ALT. #2 (REFER TO NOTES, SHEET 19)
- ALL EXISTING TRASH / DEBRIS WITHIN THE CONSTRUCTION AREAS SHALL BE REMOVED AND DISPOSED OF ON SITES PROVIDED BY THE CONTRACTOR. THESE SITES SHALL BE APPROVED BY THE ENGINEER AND MEET THE REQUIREMENTS OF NOTE 7 ABOVE. THIS SHALL BE CONSIDERED SUBSIDIARY TO SITE CLEARING AND RESTORATION.
- IN PROPOSED ROADWAY AREAS, CONTRACTOR SHALL LEAVE ROAD SUBGRADE TO WITHIN 0.1' OF FINAL GRADE FOR PAVING CONTRACTOR.
- R/W OF WESTLAKES PARKWAY GRADING BY ENTRY PAVING CONTRACTOR. THIS PROJECT WILL BE UNDER CONSTRUCTION AND CONTRACTOR SHALL COORDINATE SITE GRADING OPERATIONS WITH OTHER CONTRACTOR.

ADD ALTERNATE SCHEDULE

- | | |
|-----|---------------------|
| #1. | POND 4 CONSTRUCTION |
| #2. | TEMPORARY SEEDING |



VICINITY MAP

INDEX TO DRAWINGS

SHEET NO.	DESCRIPTION
1	TITLE SHEET
2-4	PHASE AND BORING MAPS
5	GRADING DETAILS
6-7	LOT GRADING
8-11	LAKE GRADING
12-17	BERM GRADING
18-23	EROSION CONTROL/SEEDING
24	FINAL PLAT

SCALE: 1" = 300'

AS-BUILT: SEPTEMBER 2004

G:\CIVIL\99118\DWG\GRAD\PH-1\PH_TITLE.DWG



MKEC
ENGINEERING
CONSULTANTS
411 N. WEBB ROAD
WICHITA, KS. 67206
316 - 694 - 9600

FOX RIDGE ADDITION
PROJECT NAME

PHASE TITLE SHEET
SHEET TITLE

BJH

DESIGN BY:

AUGUST 2003

DATE

BJH

DRAWN BY:

99118

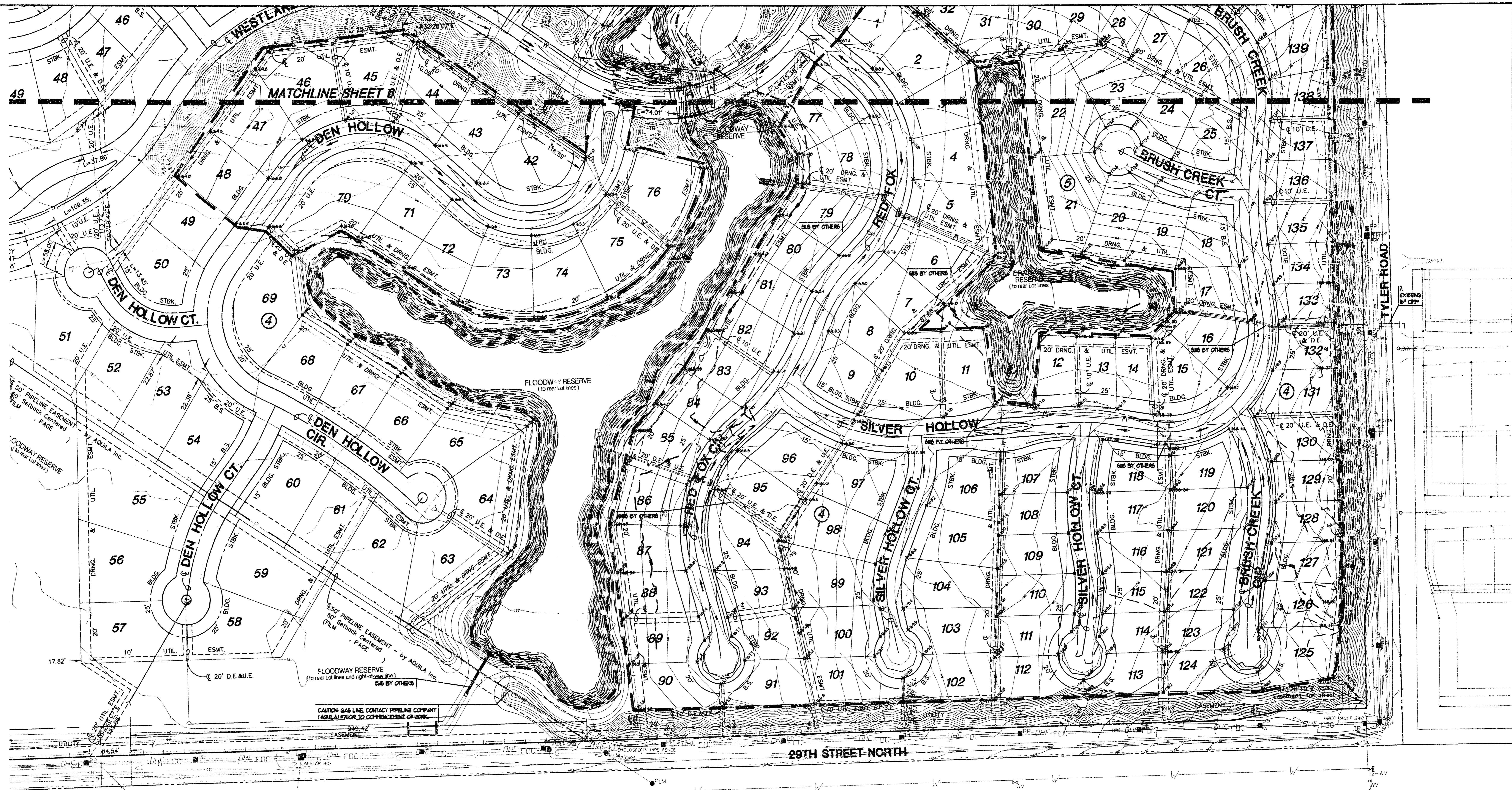
JOB NO.

JAG/GJA

CHECKED BY:

1 / 24

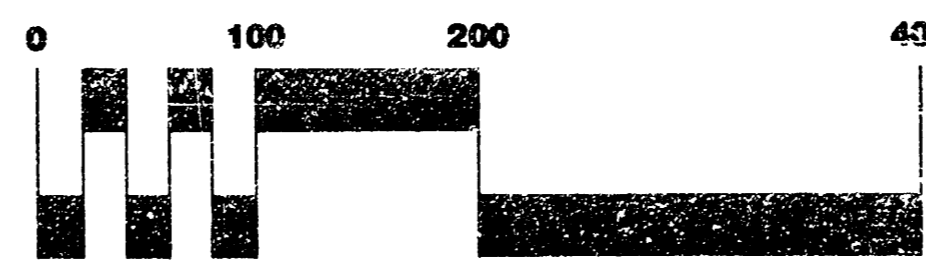
SHEET/OF



NOTE: SEE TYPICAL LOT GRADING CROSS SECTIONS, SHEET 5.

LEGEND

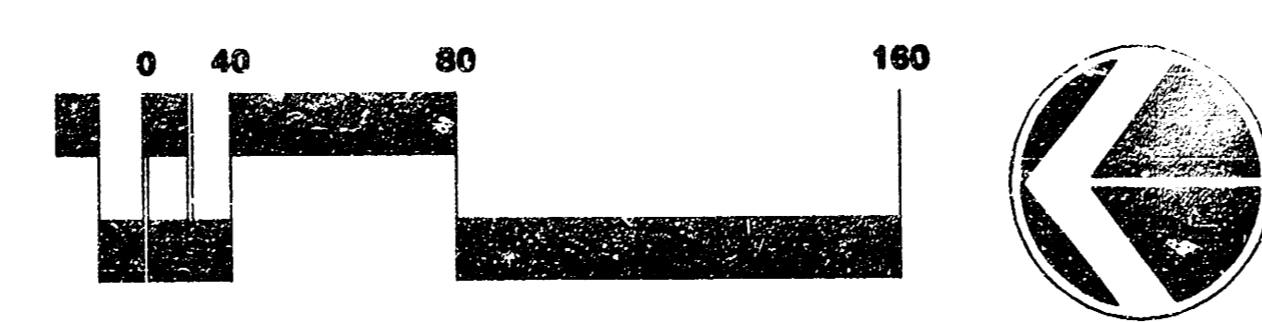
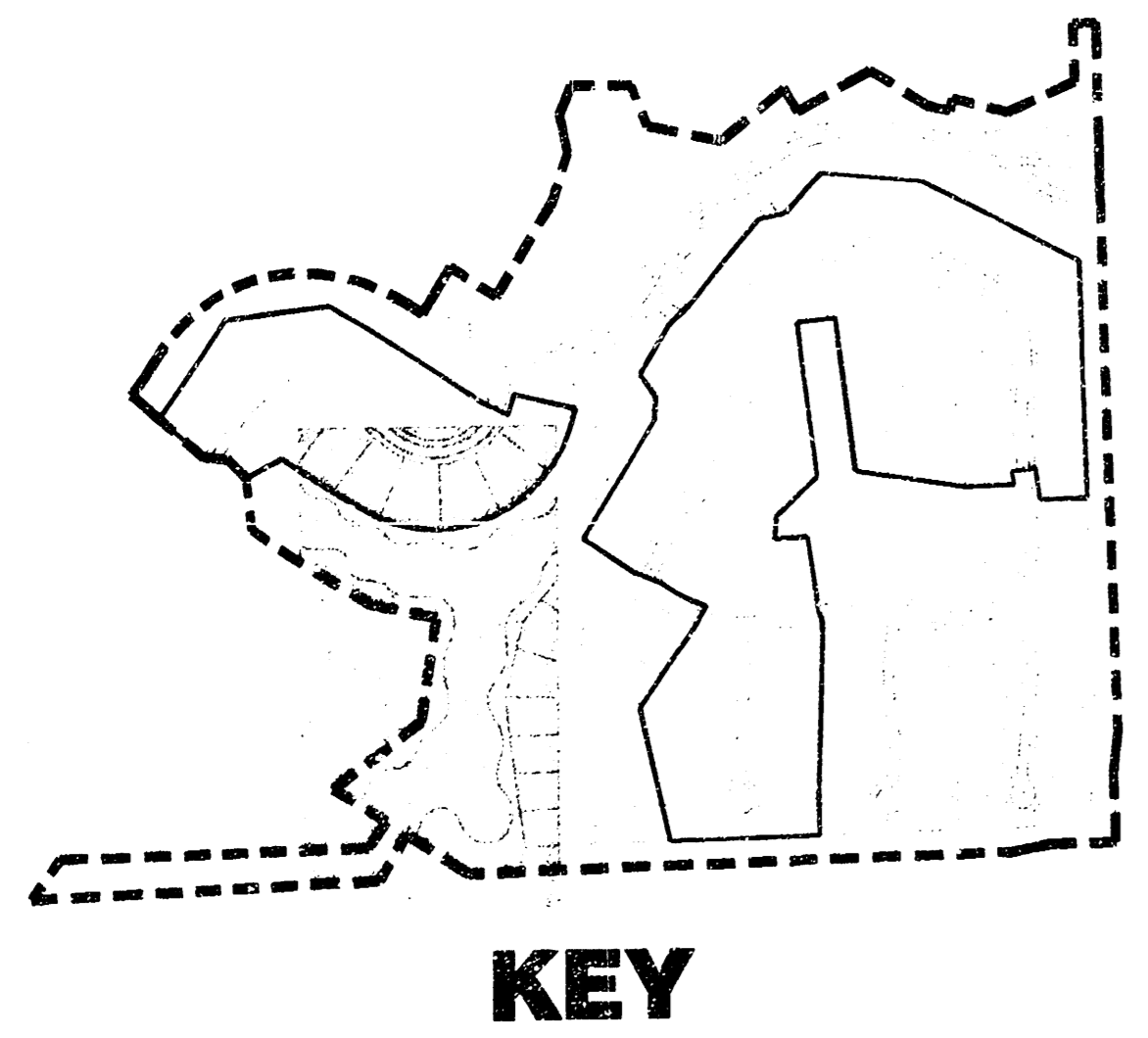
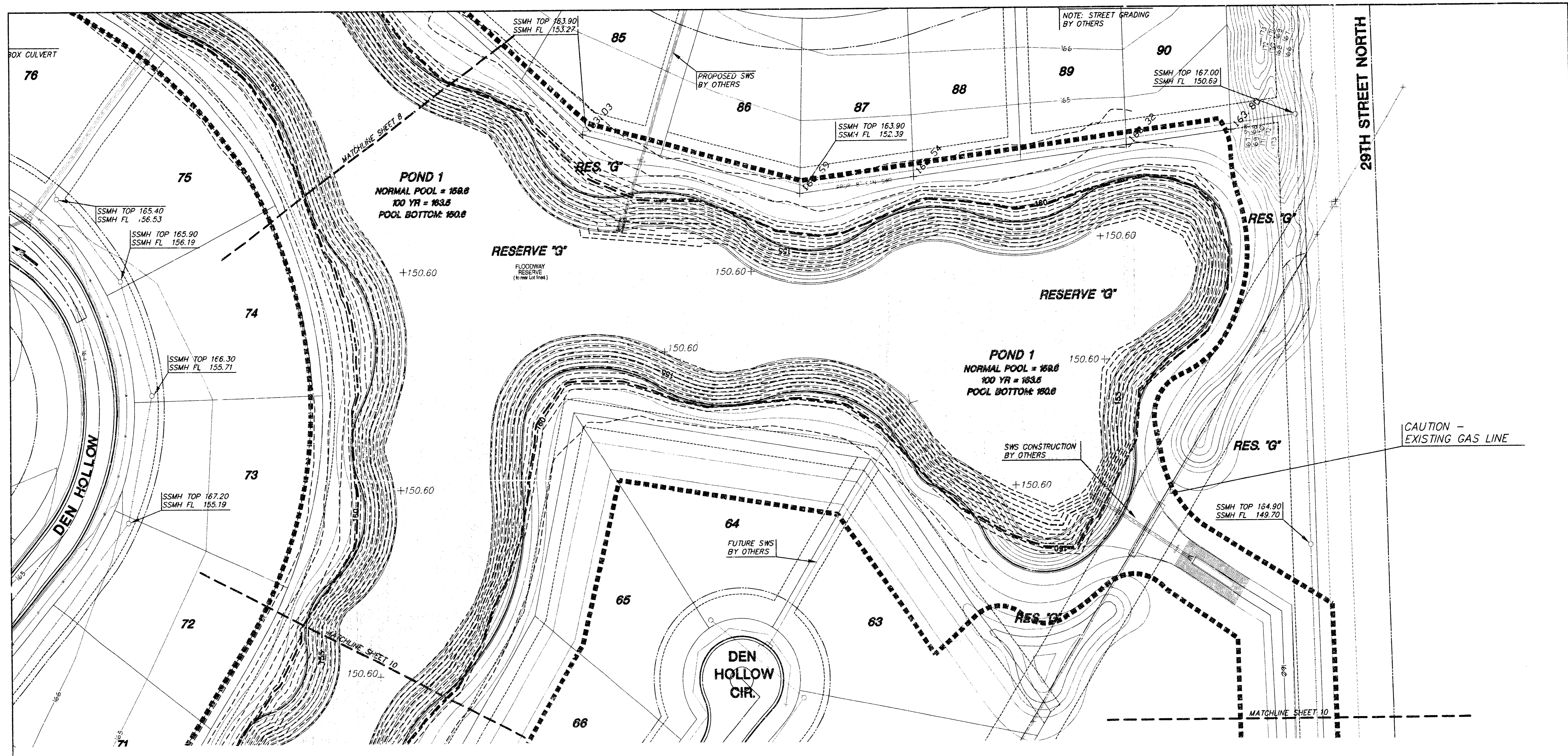
- WATER LINE
- SAN. SEWER LINE
- EXIST. CONTOURS
- PROP. CONTOURS
- LIMITS OF POND GRADING
- ADD ALTERNATE #1
- AS-BUILT CONTOURS
- NORMAL POOL ELEV.



AS-BUILT: SEPTEMBER 2004

G:\CIVIL\99\18\DWG\GRAD\PH-1\AS-BUILT\LOT_GRD_2.DWG

<p>MKEC ENGINEERING CONSULTANTS 411 N. WEBB ROAD WICHITA, KS. 67206 316-684-9800</p>	<p>FOX RIDGE PROJECT NAME</p>		
	<p>LOT GRADING SHEET TITLE</p>		
	<p>KLK DESIGN BY:</p>	<p>BJH DRAWN BY:</p>	<p>JAG/KLK CHECKED BY:</p>
	<p>AUGUST 2003 DATE</p>	<p>99118 JOB NO.</p>	<p>7 / 24 SHEET/OF</p>

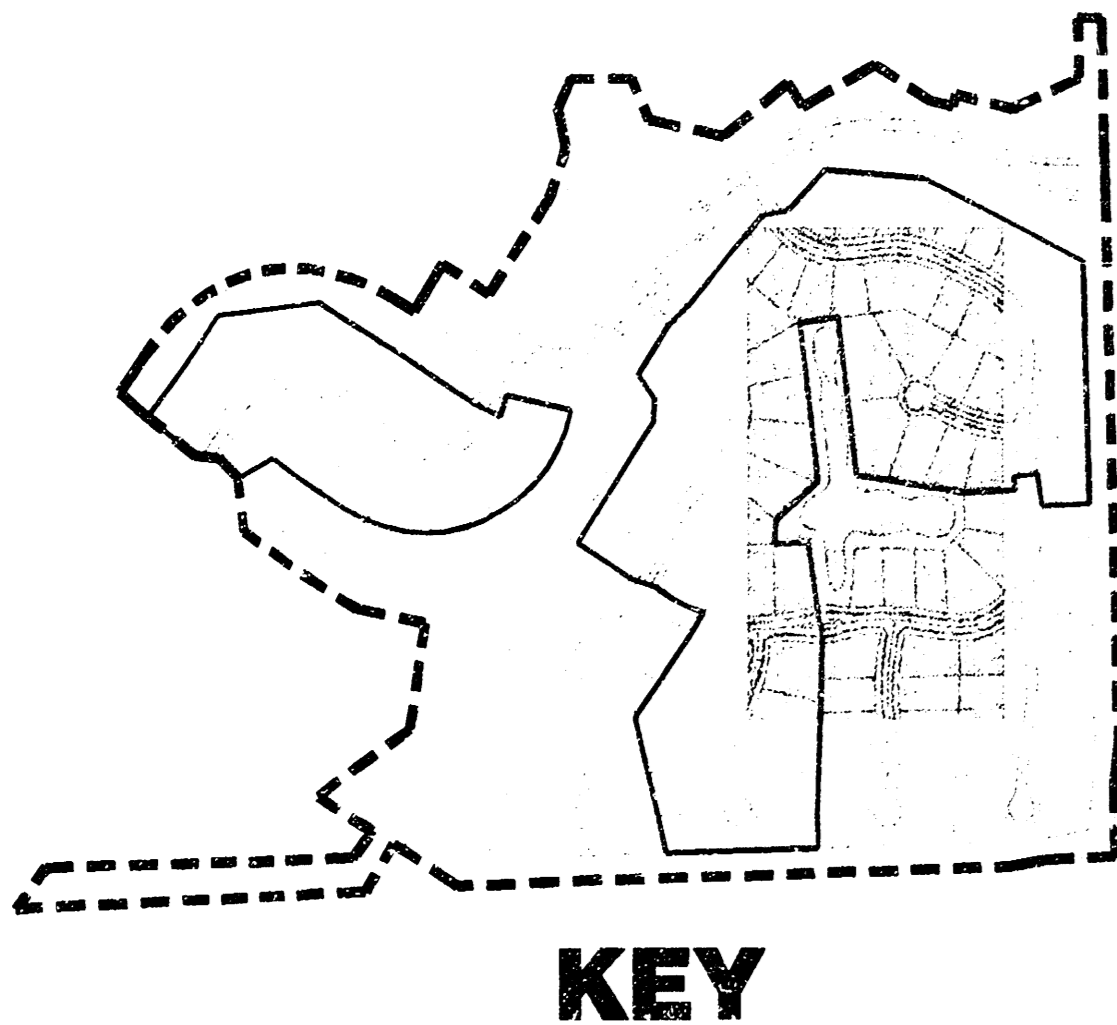
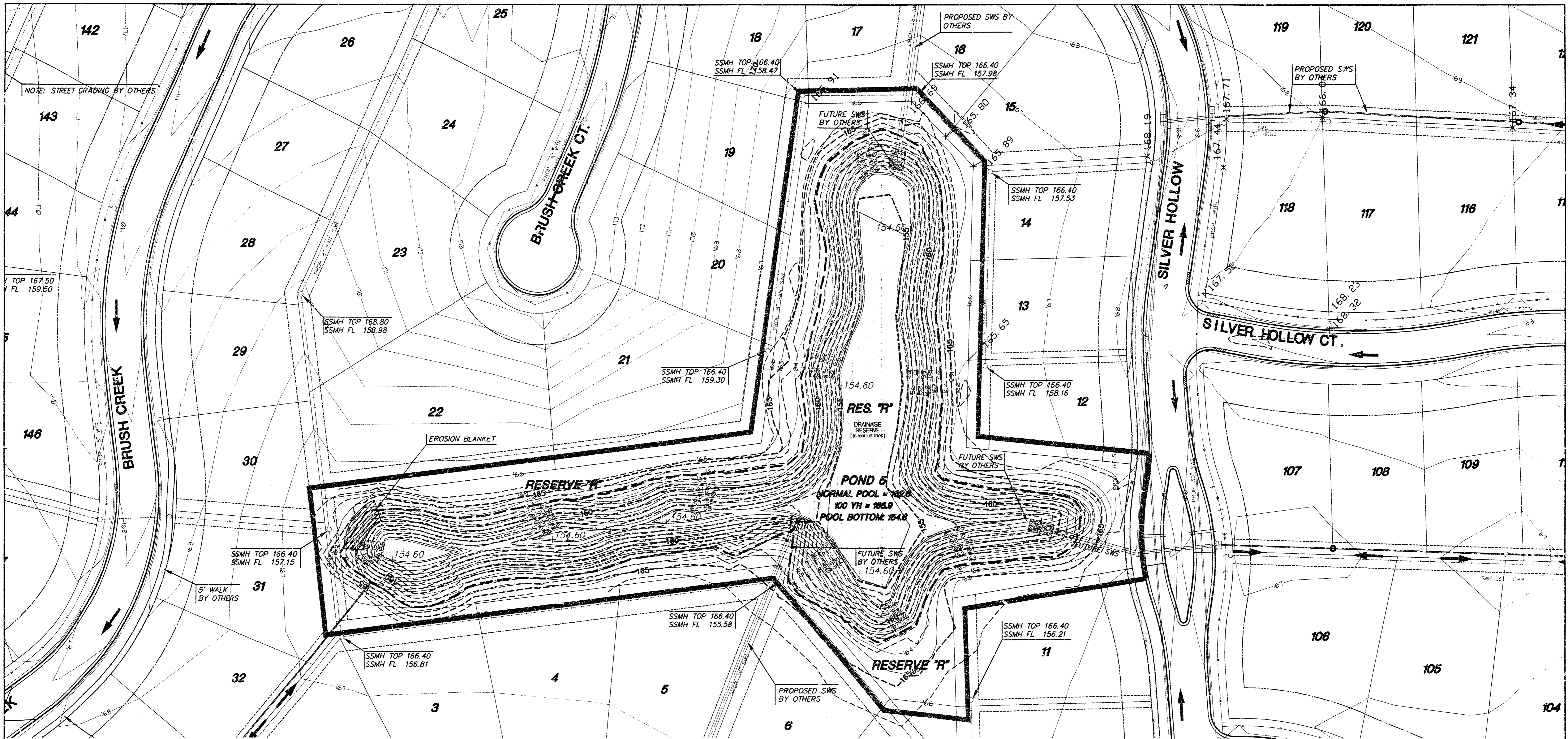


LEGEND

- WATER LINE
- SAN. SEWER LINE
- 155 — EXIST. CONTOURS
- 155 — PROP. CONTOURS
- LIMITS OF POND GRADING
- ADD ALTERNATE #1
- 155 — AS-BUILT CONTOURS
- 161.6 — NORMAL POOL ELEV.

AS-BUILT: SEPTEMBER 2004

<p>MKEC ENGINEERING CONSULTANTS 411 N. WEBB ROAD WICHITA, KS. 67208 316-264-9600</p>	<p>FOX RIDGE PROJECT NAME</p>		
	<p>LAKE GRADING - POND 1 SHEET TITLE</p>		
	<p>JAG DESIGN BY:</p>	<p>BUH DRAWN BY:</p>	<p>JAG/KLK CHECKED BY:</p>
	<p>AUGUST 2003 DATE</p>	<p>99118 JOB NO.</p>	<p>9 / 24 SHEET/OF</p>

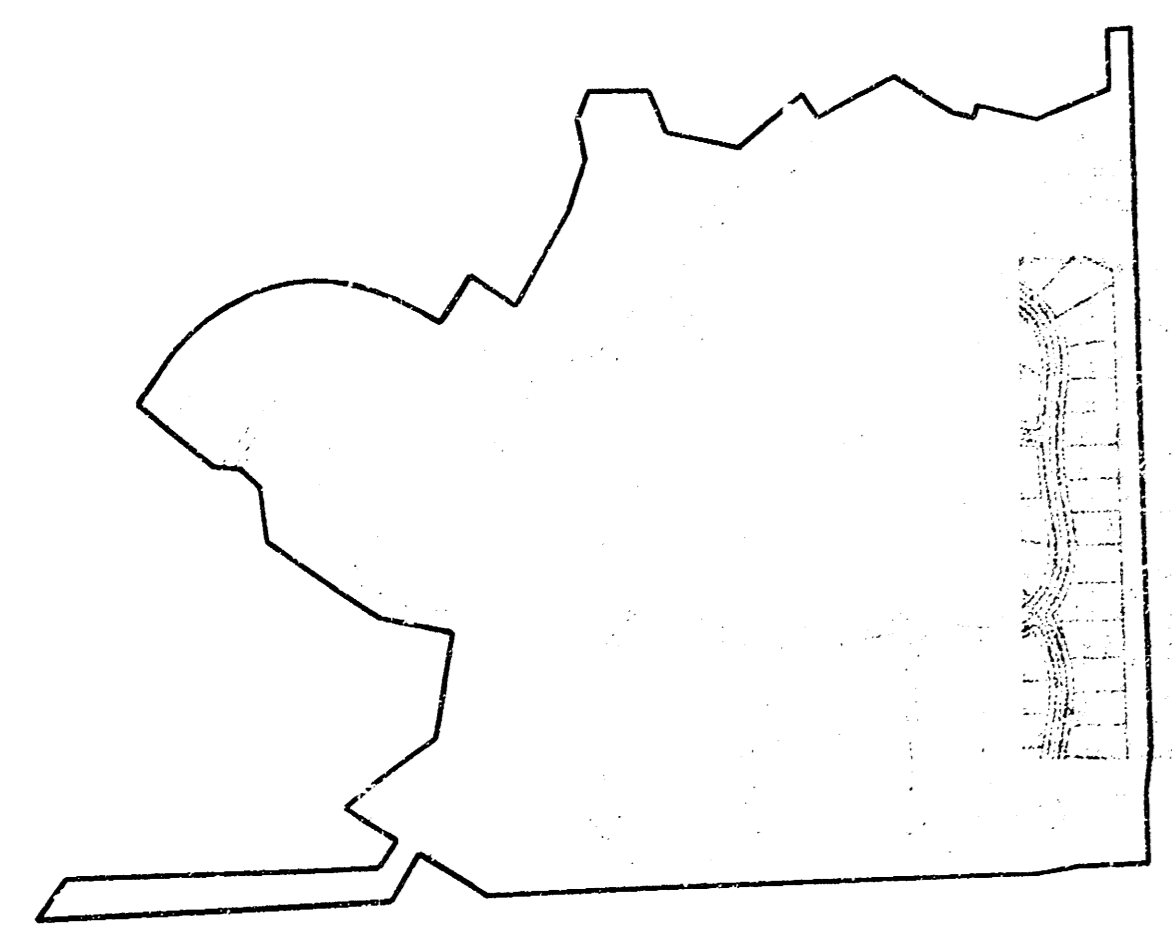
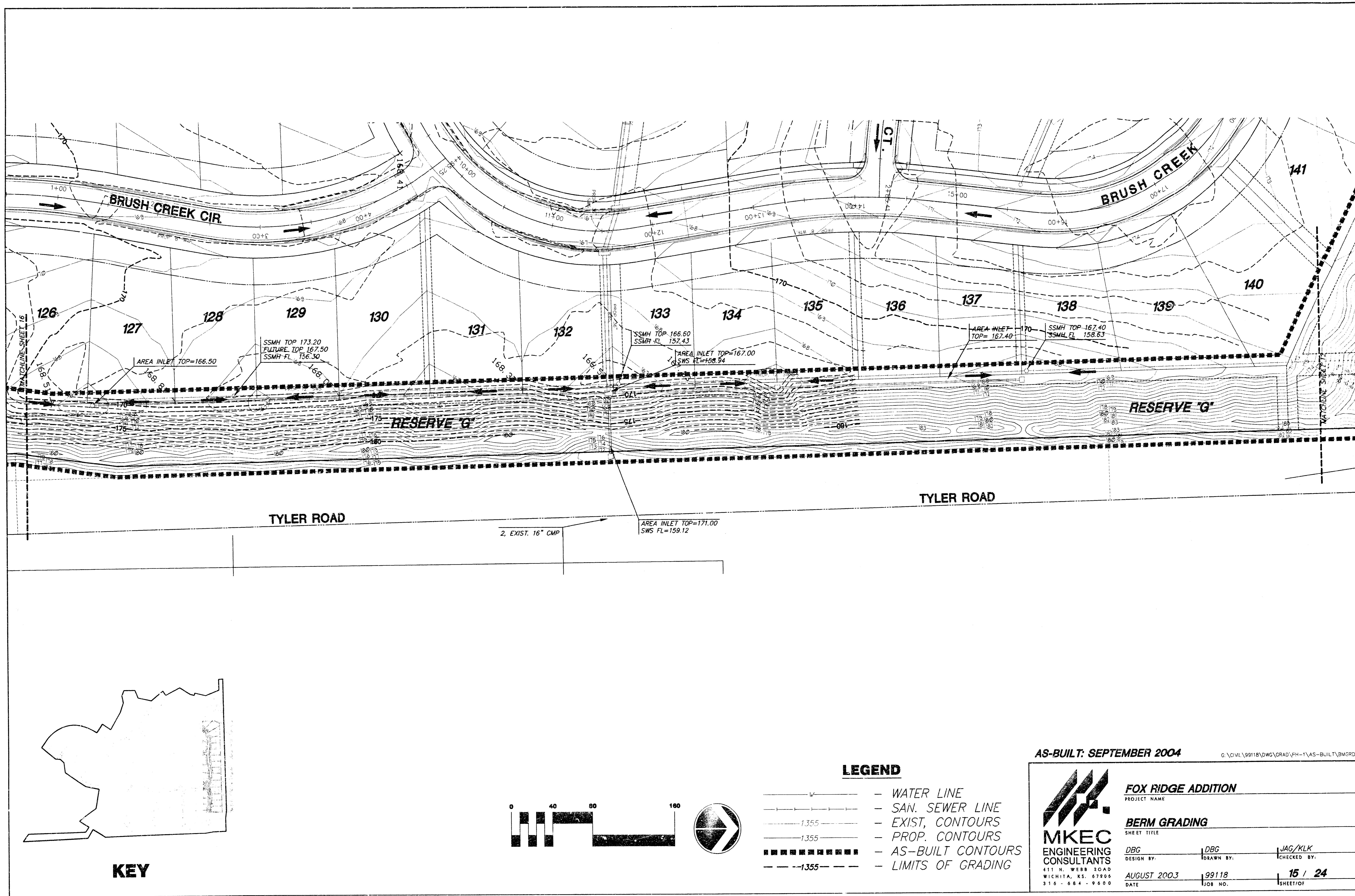


LEGEND

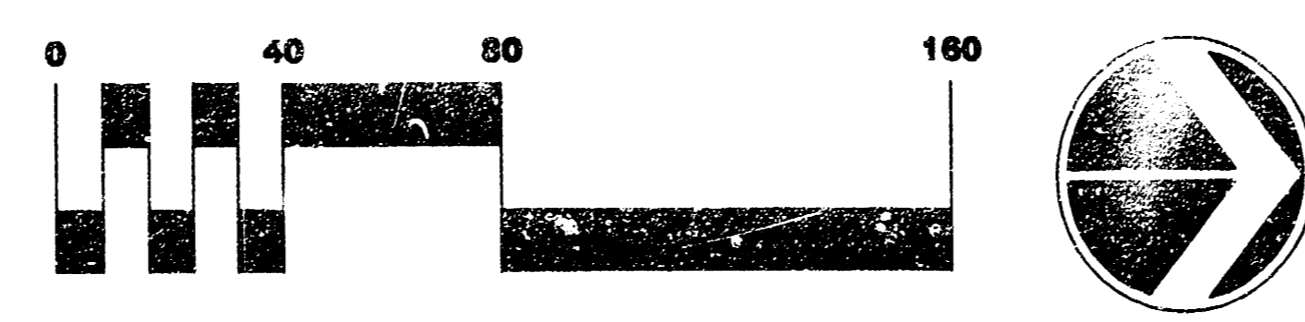
- WATER LINE
- SAN. SEWER LINE
- 155 — EXIST. CONTOURS
- 155 — PROP. CONTOURS
- LIMITS OF POND GRADING
- ADD ALTERNATE #1
- 155 — AS-BUILT CONTOURS
- 151.6 — NORMAL POOL ELEV.

AS-BUILT: SEPTEMBER 2004 © \CIVIL\99118\DWG\GRAD\PH-1\AS-BUILT\LAK_GRD_4.DWG

 MKEC ENGINEERING CONSULTANTS 411 N. WEBB ROAD WICHITA, KS. 67206 316-684-9600	FOX RIDGE PROJECT NAME		
	LAKE GRADING - POND 5 SHEET TITLE		
	JAG DESIGN BY.	BJH DRAWN BY.	JAG/KLK CHECKED BY.
	AUGUST 2003 DATE	99118 JOB NO.	11 / 24 SHEET/OF



KEY



LEGEND

- W — WATER LINE
- SAN. SEWER LINE
- - - 1355 - - - EXIST. CONTOURS
- - - 1355 - - - PROP. CONTOURS
- AS-BUILT CONTOURS
- - - 1355 - - - LIMITS OF GRADING

AS-BUILT: SEPTEMBER 2004

C:\CIVIL\99118\DWG\GRAD\PH-1\AS-BUILT\BMGRD4

<p>MKEC ENGINEERING CONSULTANTS 411 N. WEBB ROAD WICHITA, KS. 67206 316-684-9000</p>	<p>FOX RIDGE ADDITION PROJECT NAME</p>		
	<p>BERM GRADING SHEET TITLE</p>		
	<p>DESIGN BY: DBG</p>	<p>DRAWN BY: DBG</p>	<p>CHECKED BY: JAG/KLK</p>
	<p>DATE: AUGUST 2003</p>	<p>JOB NO.: 99118</p>	<p>SHEET/OF: 15 / 24</p>

