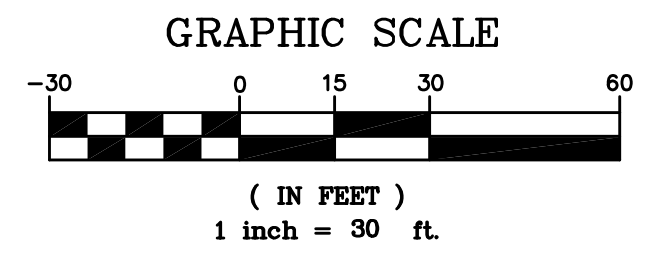
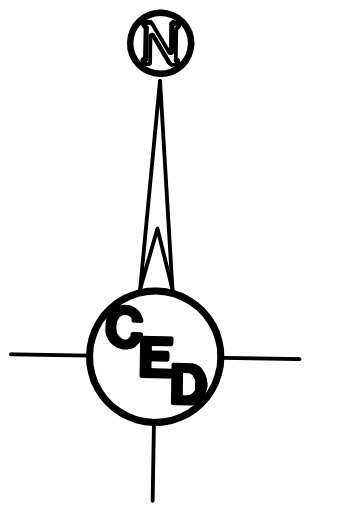


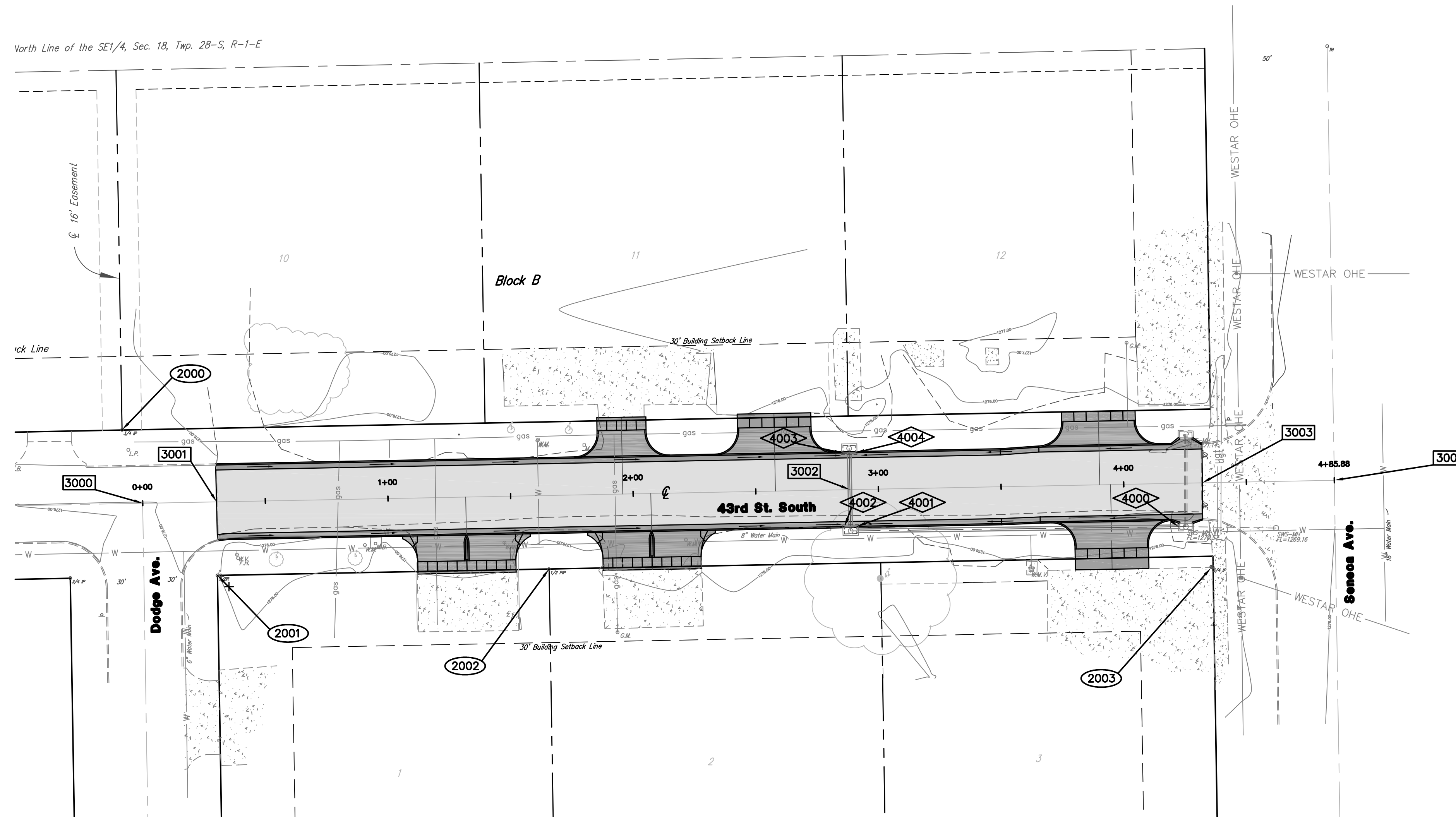
SITE STAKING & CONTROL PLAN 43RD STREET SOUTH PAVING IMPROVEMENTS WICHITA, SEDGWICK COUNTY, KANSAS



UTILITY LEGEND

= Fire Hydrant	= Flag Pole
= Water Meter	= SS Manhole
= Water Valve	= SWS Manhole
= Gas Meter	= Sign
= Gas Valve	= Misc. Post
= Telephone Riser	= Guy Anchor
= Mailbox	= Power Pole
= Deciduous Tree or Shrub	= Light Pole
= Existing Fence	
= Right of Way Line	
= Underground Telephone	
= Underground Electric	
= Overhead Electric	
= Water Line	
= Sanitary Sewer	
= Gas Line	
= Cable TV or Fiber Optic	

North Line of the SE1/4, Sec. 18, Twp. 28-S, R-1-E



2000 - Control Point

CONTROL POINTS				
Number	Northing	Easting	Elevation	Raw Desc
2000	1659772.69	1644430.69	0.00	FND 3/4" IRON PIPE
2001	1659713.33	1644469.60	0.00	5/8" ROD
2002	1659715.89	1644604.69	0.00	FND 1/2" PIPE
2003	1659716.89	1644874.77	0.00	FND 3/4" PIPE

3000 - Street Staking Point

STREET STAKING POINTS				
Number	Northing	Easting	Elevation	Raw Desc
3000	1659742.74	1644439.11	0.00	CL INTERSECTION 43RD & DODGE
3001	1659743.32	1659743.32	0.00	CL 43RD STREET SOUTH
3002	1659748.30	1644727.42	0.00	PVI
3003	1659751.07	1644871.10	0.00	CL 43RD STREET SOUTH
3004	1659752.11	1644924.90	0.00	CL INTERSECTION 43RD & SENECA

4000 - Storm Water Sewer Control Point

CONTROL POINTS				
Number	Northing	Easting	Elevation	Raw Desc
2000	1659772.69	1644430.69	0.00	FND 3/4" IRON PIPE
2001	1659713.33	1644469.60	0.00	5/8" ROD
2002	1659715.89	1644604.69	0.00	FND 1/2" PIPE
2003	1659716.89	1644874.77	0.00	FND 3/4" PIPE

Benchmark: Square Cut on Sidewalk at
N.E. Corner of Lot 3, Block D, Vilm Gardens
Second Addition.
Elevation = 1276.05 NAVD88

UTILITIES SHOWN REPRESENT THE BEST INFORMATION AVAILABLE FOR DESIGN. ADDITIONAL UTILITIES MAY BE PRESENT ON THIS PROJECT. THE CONTRACTOR SHALL BE RESPONSIBLE FOR DETERMINING THE EXACT LOCATION, DEPTH AND SIZE OF ALL UNDERGROUND UTILITIES PRIOR TO CONSTRUCTION. THE CONTRACTOR SHALL BE LIABLE FOR ANY DAMAGE CAUSED BY THE FAILURE TO DO SO.

**CURB & GUTTER STREET IMPROVEMENTS FOR
STAKING CONTROL/SITE PLAN
43RD STREET SOUTH, WICHITA, SEDGWICK COUNTY, KS**

CED PROJ. NO.: 20071572

CERTIFIED ENGINEERING DESIGN, P.A.

810 WEST DOUGLAS, SUITE C
WICHITA, KANSAS 67203
PH.(316)262-8808 FAX.(316)262-1669

DESIGNED: HDF	SCALE: 1"=30'	SHEET
DRAWN: JDT	DATE: 09-07	2
CHECKED: HDF	CED FILE: 43rdStreetDesign	TOTAL 15

SURVEY DISCLAIMER:
TOPOGRAPHIC SURVEY AND CONTOUR MAP USED IN PREPARING PLANS WAS PROVIDED BY SAVOY COMPANY, P.A., 535 S. EMPORIA, SUITE 104, WICHITA, KS. ENGINEER DOES NOT GUARANTEE SURVEY ELEVATIONS FOR ACCURACY. CONTRACTOR SHALL VERIFY ELEVATIONS AND NOTIFY ENGINEER OF ANY DISCREPANCIES.