

UTILITY LEGEND

= Fire Hydrant	= Flag Pole
= Water Meter	= SS Manhole
= Water Valve	= SWS Manhole
= Gas Meter	= Sign
= Gas Valve	= Misc. Post
= Telephone Riser	= Guy Anchor
= Mailbox	= Power Pole
= Deciduous Tree or Shrub	= Light Pole
= Existing Fence	
= Right of Way Line	
= Underground Telephone	
= Underground Electric	
= Overhead Electric	
= Water Line	
= Sanitary Sewer	
= Gas Line	
= Cable TV or Fiber Optic	

	Proposed 5" A.C. Pavement on 5" Crushed Rock Base
	Proposed Concrete Curb & Gutter
	Exist. Road Gravel To Be Removed
	Propose Concrete Removal

Sta. 4+85.00
CL Intersection of 43rd St. South & Seneca Ave.
N 1659752.11
E 1644924.90

Sta. 4+32.07
End Paving of 43rd St. South.
N 1659751.07
E 1644871.10

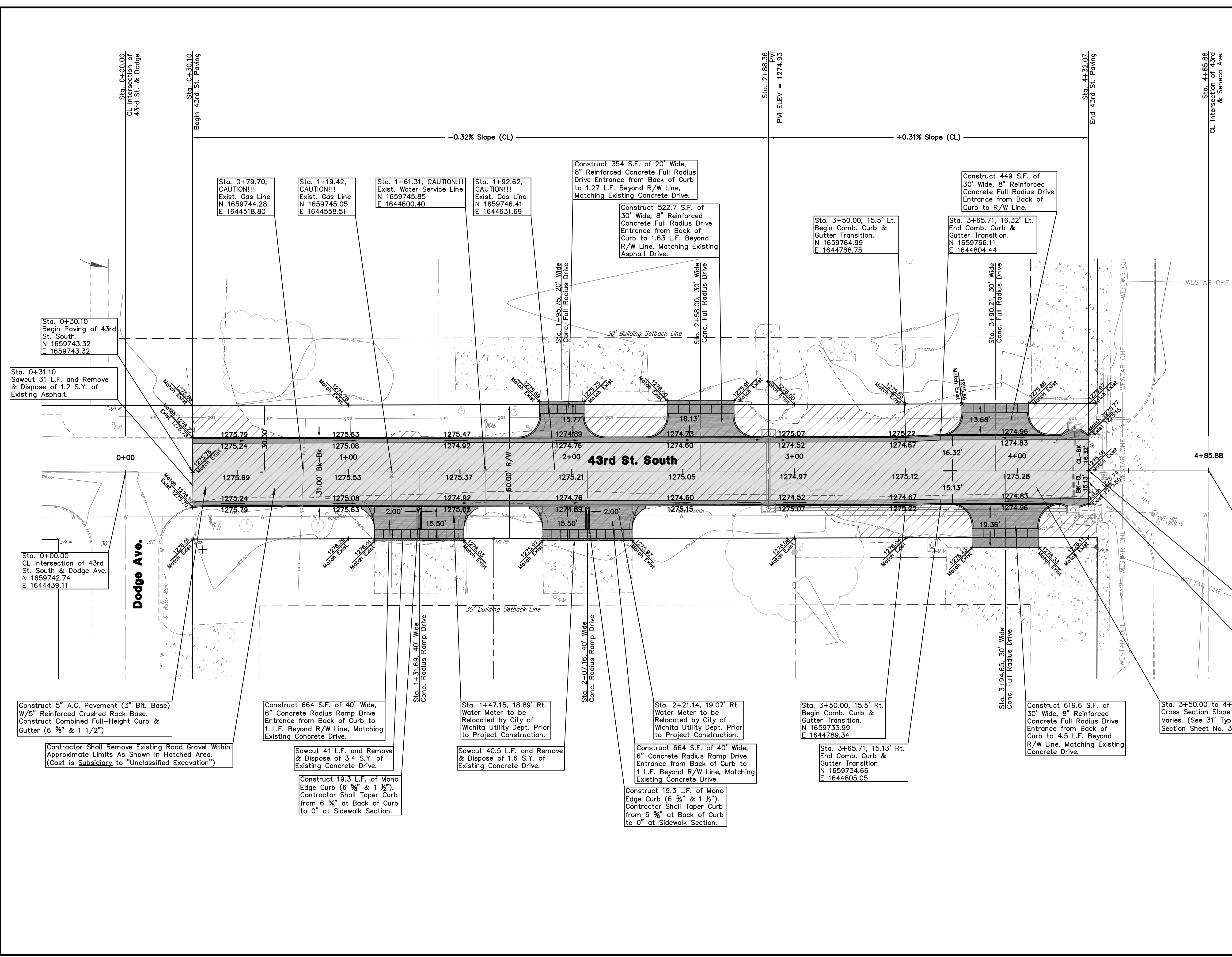
Sta. 4+32.07
Sawcut 31.5 L.F. and Remove & Dispose of 1.6 S.Y. of Existing Concrete.

Benchmark: Square Cut on Sidewalk at N.E. Corner of Lot 3, Block D, Vilm Gardens Second Addition.
Elevation = 1276.05 NAVD88

UTILITIES SHOWN REPRESENT THE BEST INFORMATION AVAILABLE FOR DESIGN. ADDITIONAL UTILITIES MAY BE PRESENT ON THIS PROJECT. THE CONTRACTOR SHALL BE RESPONSIBLE FOR DETERMINING THE EXACT LOCATION, DEPTH AND SIZE OF ALL UNDERGROUND UTILITIES PRIOR TO CONSTRUCTION. THE CONTRACTOR SHALL BE LIABLE FOR ANY DAMAGE CAUSED BY THE FAILURE TO DO SO.

PAVING PLAN FOR
43RD STREET SOUTH
WICHITA, SEDGWICK COUNTY, KANSAS
CED PROJ. NO.: 20071572
CERTIFIED ENGINEERING DESIGN, P.A.
810 WEST DOUGLAS, SUITE C
WICHITA, KANSAS 67203
PH.(316)262-8808 FAX.(316)262-1669

DESIGNED: HDF	SCALE: 1"=20'	SHEET
DRAWN: JDT	DATE: 09-07	5
CHECKED: HDF	CED FILE: 43rdStreetDesign	TOTAL 15



Sta. 0+79.70, CAUTION!!!
Exist. Gas Line
N 1659744.28
E 1644518.80

Sta. 1+19.42, CAUTION!!!
Exist. Gas Line
N 1659745.05
E 1644558.51

Sta. 1+61.31, CAUTION!!!
Exist. Water Service Line
N 1659745.85
E 1644600.40

Sta. 1+92.62, CAUTION!!!
Exist. Gas Line
N 1659746.41
E 1644631.69

Construct 354 S.F. of 20' Wide, 8" Reinforced Concrete Full Radius Drive Entrance from Back of Curb to 1.27 L.F. Beyond R/W Line, Matching Existing Concrete Drive.

Construct 522.7 S.F. of 30' Wide, 8" Reinforced Concrete Full Radius Drive Entrance from Back of Curb to 1.63 L.F. Beyond R/W Line, Matching Existing Asphalt Drive.

Sta. 3+50.00, 15.5' Lt. End Comb. Curb & Gutter Transition.
N 1659764.99
E 1644788.75

Construct 449 S.F. of 30' Wide, 8" Reinforced Concrete Full Radius Drive Entrance from Back of Curb to R/W Line.

Sta. 3+65.71, 16.32' Lt. End Comb. Curb & Gutter Transition.
N 1659766.11
E 1644804.44

Sta. 0+30.10
Begin Paving of 43rd St. South.
N 1659743.32
E 1659743.32

Sta. 0+31.10
Sawcut 31 L.F. and Remove & Dispose of 1.2 S.Y. of Existing Asphalt.

Sta. 0+00.00
CL Intersection of 43rd St. South & Dodge Ave.
N 1659742.74
E 1644439.11

Construct 5" A.C. Pavement (3" Bit. Base) W/5" Reinforced Crushed Rock Base. Construct Combined Full-Height Curb & Gutter (6 3/8" & 1 1/2")

Contractor Shall Remove Existing Road Gravel Within Approximate Limits As Shown In Hatched Area. (Cost is Subsidiary to "Unclassified Excavation")

Construct 664 S.F. of 40' Wide, 6" Concrete Radius Ramp Drive Entrance from Back of Curb to 1 L.F. Beyond R/W Line, Matching Existing Concrete Drive.

Sawcut 41 L.F. and Remove & Dispose of 3.4 S.Y. of Existing Concrete Drive.

Construct 19.3 L.F. of Mono Edge Curb (6 3/8" & 1 1/2"). Contractor Shall Taper Curb from 6 3/8" at Back of Curb to 0" at Sidewalk Section.

Sta. 1+47.15, 18.89' Rt. Water Meter to be Relocated by City of Wichita Utility Dept. Prior to Project Construction.

Sawcut 40.5 L.F. and Remove & Dispose of 1.6 S.Y. of Existing Concrete Drive.

Sta. 2+21.14, 19.07' Rt. Water Meter to be Relocated by City of Wichita Utility Dept. Prior to Project Construction.

Construct 664 S.F. of 40' Wide, 6" Concrete Radius Ramp Drive Entrance from Back of Curb to 1 L.F. Beyond R/W Line, Matching Existing Concrete Drive.

Construct 19.3 L.F. of Mono Edge Curb (6 3/8" & 1 1/2"). Contractor Shall Taper Curb from 6 3/8" at Back of Curb to 0" at Sidewalk Section.

Sta. 3+50.00, 15.5' Rt. Begin Comb. Curb & Gutter Transition.
N 1659733.99
E 1644789.34

Sta. 3+65.71, 15.13' Rt. End Comb. Curb & Gutter Transition.
N 1659734.66
E 1644805.05

Construct 619.6 S.F. of 30' Wide, 8" Reinforced Concrete Full Radius Drive Entrance from Back of Curb to 4.5 L.F. Beyond R/W Line, Matching Existing Concrete Drive.

Sta. 3+50.00 to 4+32.07
Cross Section Slope Varies. (See 31' Typ. Section Sheet No. 3)