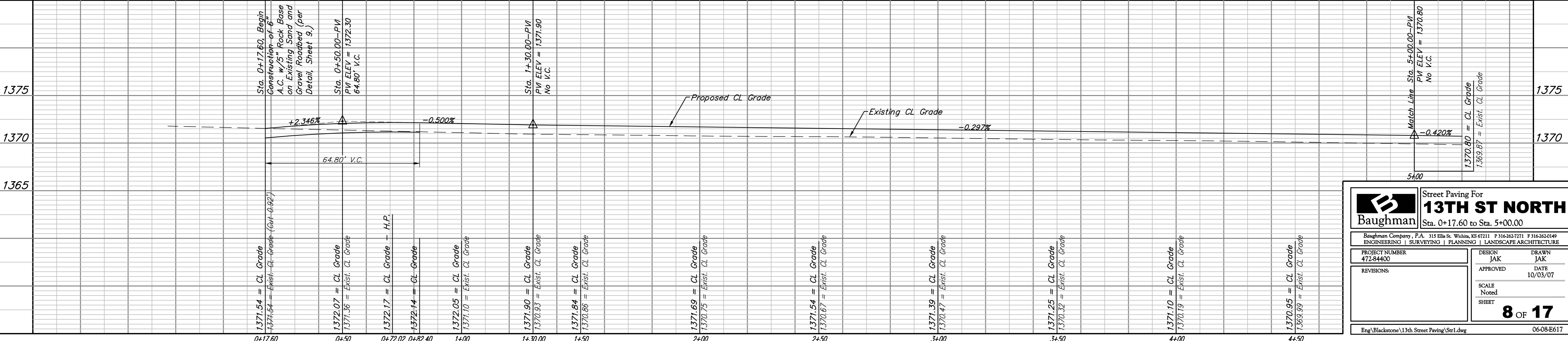
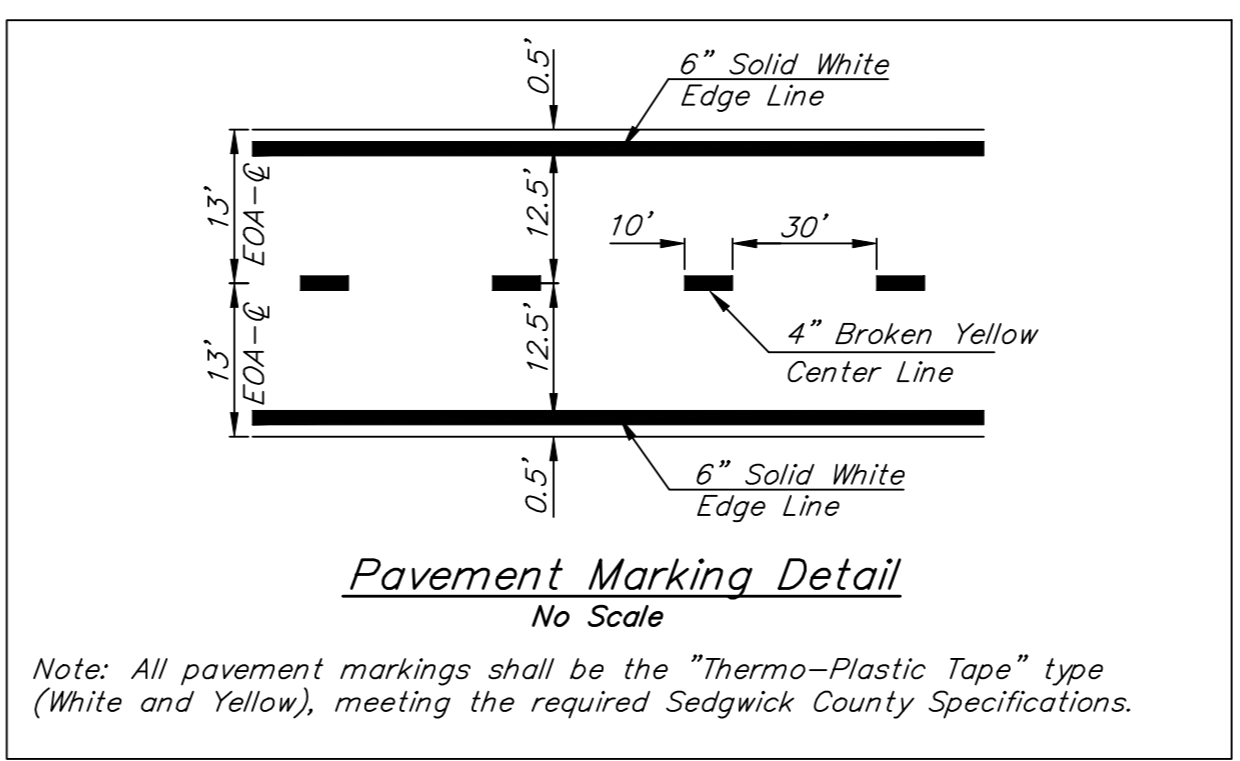
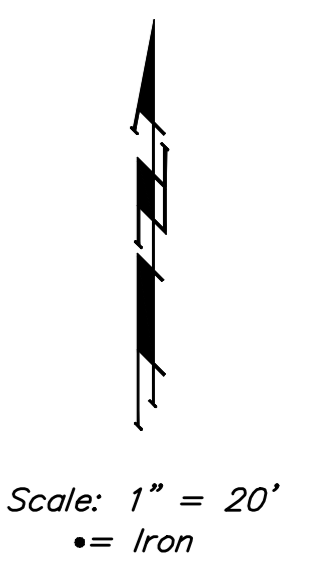
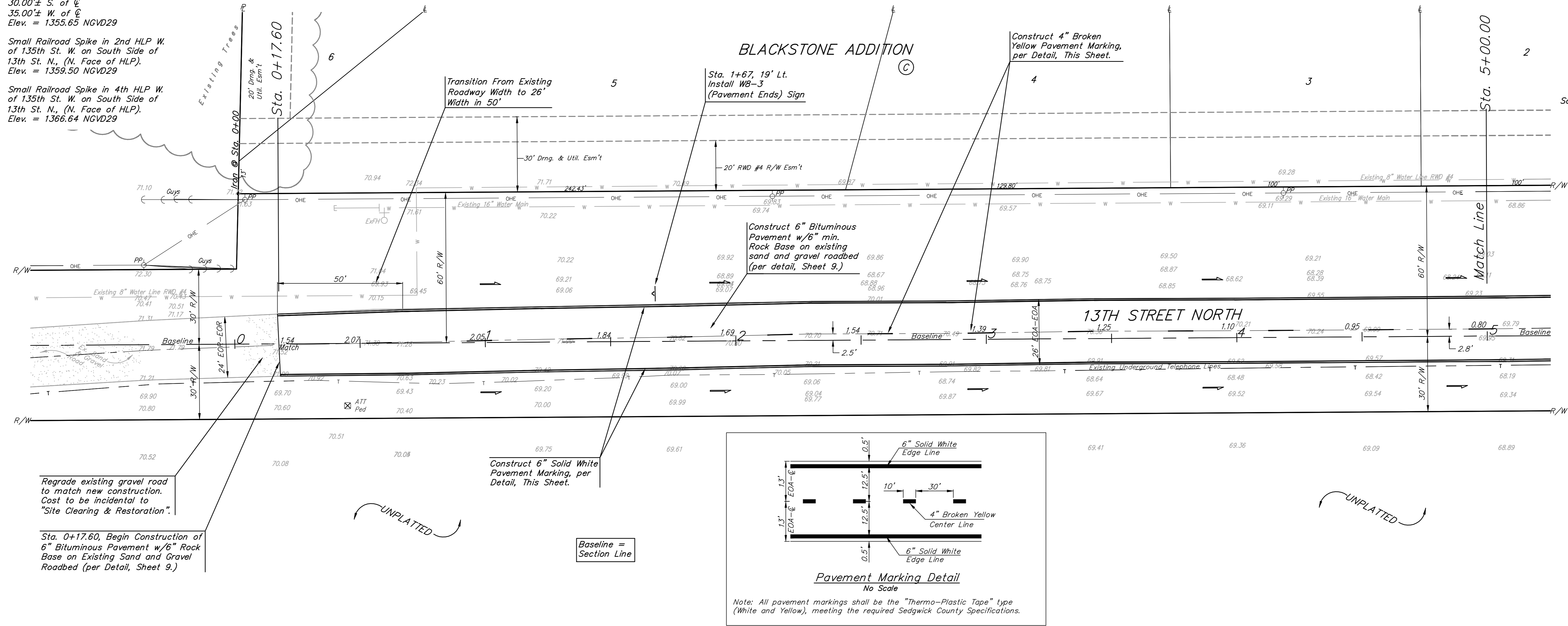


BENCHMARKS:
 City of Wichita Disc at Southwest
 Corner of 135th St. W. & 13th St. N
 30.00'± S. of ϕ
 35.00'± W. of ϕ
 Elev. = 1355.65 NGVD29

Small Railroad Spike in 2nd HLP W.
 of 135th St. W. on South Side of
 13th St. N., (N. Face of HLP).
 Elev. = 1359.50 NGVD29

Small Railroad Spike in 4th HLP W.
 of 135th St. W. on South Side of
 13th St. N., (N. Face of HLP).
 Elev. = 1366.64 NGVD29



Baughman Street Paving For
13TH ST NORTH
 Sta. 0+17.60 to Sta. 5+00.00

Baughman Company, P.A. 315 Ellis St. Wichita, KS 67211 F 316-262-7271 F 316-262-0149
 ENGINEERING | SURVEYING | PLANNING | LANDSCAPE ARCHITECTURE

| | | |
|-----------------------------|---------------|------------------|
| PROJECT NUMBER 472-84400 | DESIGN JAK | DRAWN JAK |
| REVISIONS: | APPROVED | DATE 10/03/07 |
| SCALE Noted | | 8 OF 17 |
| SHEET | | |

Eng\Blackstone\13th Street Paving\Str1.dwg 06-08-E617