

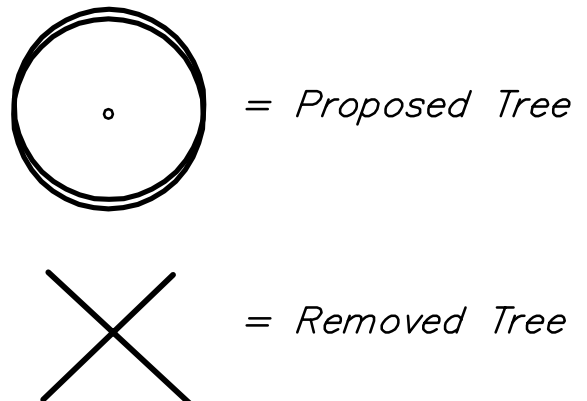
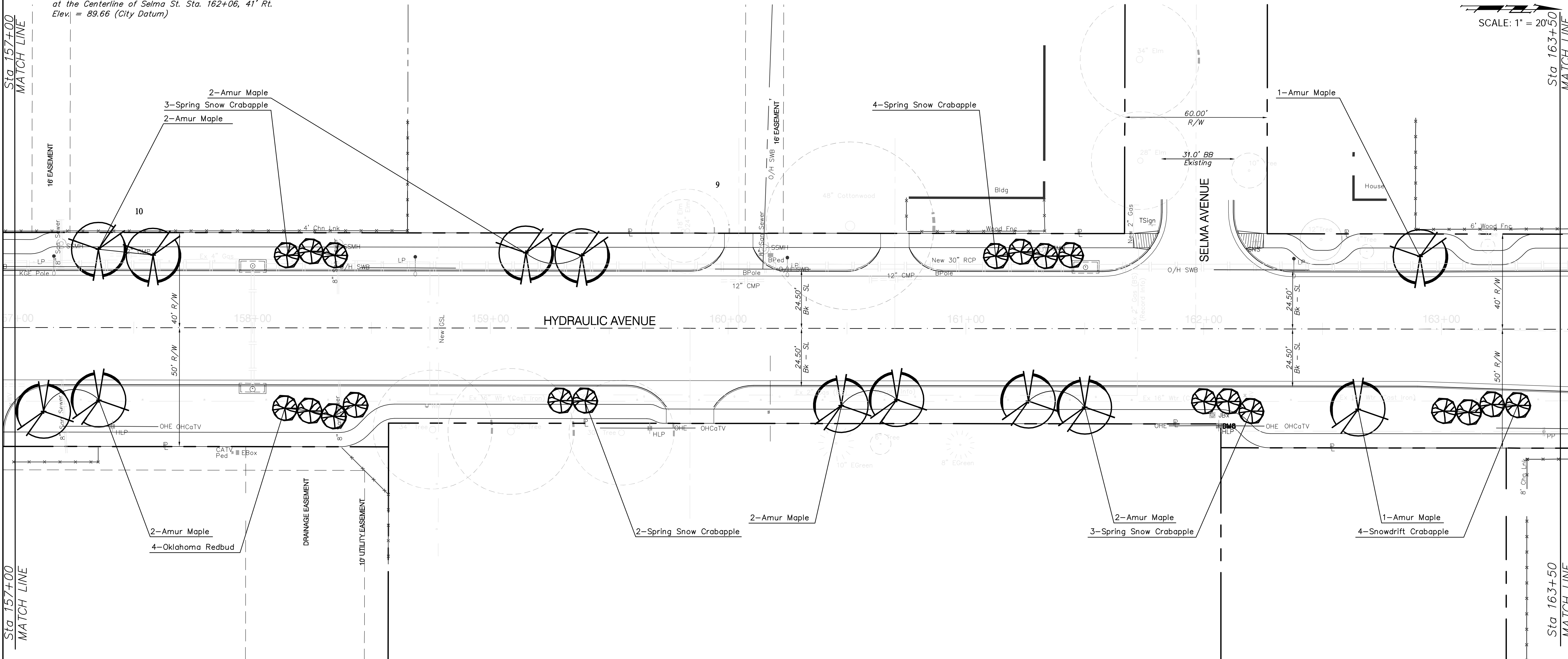
BENCHMARKS:

BM #7 - RR Spike in West face of HLP, East side of Hydraulic, South of Alta Street. Sta. 155+07, 41' Rt. Elev. = 86.12 (City Datum)

BM #8 - RR Spike in West face of HLP, East side of Hydraulic, at the Centerline of Selma St. Sta. 162+06, 41' Rt. Elev. = 89.66 (City Datum)



SCALE: 1" = 20'



PLANT SCHEDULE-This sheet only

QTY	BOTANICAL NAME	COMMON NAME	SIZE	CONDITION	REMARKS
ORNAMENTAL TREES					
12	<i>Acer ginnala</i>	Amur Flame Maple	2" Cal.	B&B	Single Stem Only
4	<i>Cercis reniformis</i> 'Oklahoma'	Oklahoma Redbud	2" Cal.	B&B	Single Stem Only
4	<i>Malus</i> 'Snowdrift'	Snowdrift Crabapple	2" Cal.	B&B	Single Stem Only
12	<i>Malus</i> 'Spring Snow'	Spring Snow Crabapple	2" Cal.	B&B	Single Stem Only

PROJECT NUMBER 472-84118a		SHEET NAME Phase1 LS		ENGINEERING DIRECTORY E:\Hydraulic LS\	
DESIGN BDT	DRAWN BDT	APPROVED BDT/PJM	DATE Mar 07	SCALE 1"=20'	BAUGHMAN NO 99-09-E453

CAPITAL IMPROVEMENT PROJECT
LANDSCAPE PLAN - SEGMENT 1
47th STREET SOUTH to MacARTHUR ROAD

BAUGHMAN COMPANY, P.A.
ENGINEERING, SURVEYING, & PLANNING
316-262-7271 * 315 ELLIS * WICHITA, KANSAS 67211