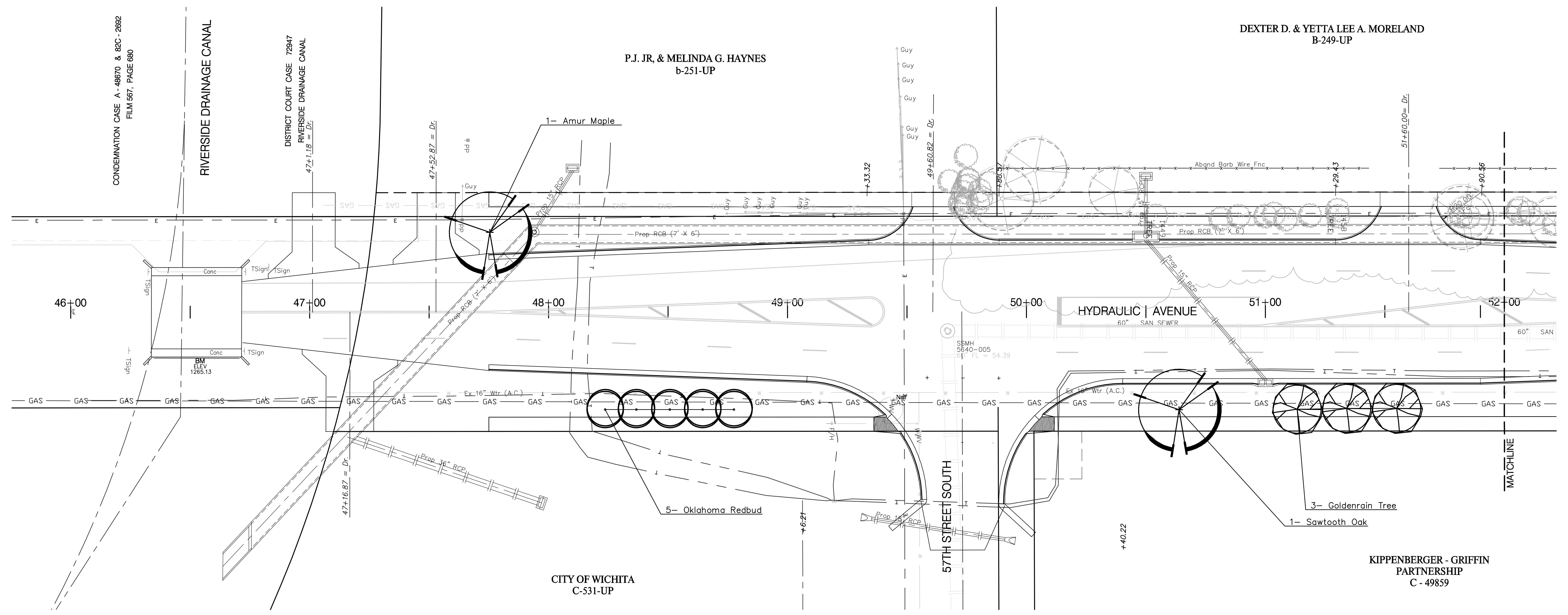
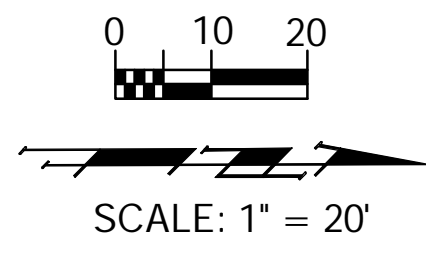


**BENCHMARKS:**

BM #8 - City of Wichita Bench Mark Disc Top of Hub Guard East Side of Hydraulic @ RCB (Riverside Drainage District Canal) 15.76' East of CenterLine of Hydraulic. Sta. 46+51.9, 15.7' Rt. Elev. = 77.73 (City Datum)



**PLANT SCHEDULE-This sheet only**

| QTY                      | BOTANICAL NAME                      | COMMON NAME      | SIZE    | CONDITION | REMARKS          |
|--------------------------|-------------------------------------|------------------|---------|-----------|------------------|
| <b>LARGE SHADE TREES</b> |                                     |                  |         |           |                  |
| 3                        | <i>Koelreuteria paniculata</i>      | Golden Raintree  | 2" Cal. | B&B       | Single Stem Only |
| 1                        | <i>Quercus acutissima</i>           | Sawtooth Oak     | 2" Cal. | B&B       | Single Stem Only |
| <b>ORNAMENTAL TREES</b>  |                                     |                  |         |           |                  |
| 1                        | <i>Acer ginnala</i>                 | Amur Flame Maple | 2" Cal. | B&B       | Single Stem Only |
| 5                        | <i>Cercis reniformis 'Oklahoma'</i> | Oklahoma Redbud  | 2" Cal. | B&B       | Single Stem Only |

Call Before You Dig!  
1-800-DIG SAFE  
or 687-2470 in Wichita  
Call Kansas One-Call at Least Two (2) Working Days Before Work Begins

|                              |              |                          |  |   |                           |
|------------------------------|--------------|--------------------------|--|---|---------------------------|
| PROJECT NUMBER<br>472-84118a |              | SHEET NAME<br>Phase 2 LS |  | ENGINEERING DIRECTORY<br>E:\Hydraulic LSI |                           |
| DESIGN<br>BDT                | DRAWN<br>BDT | APPROVED<br>BDT/PJM      | DATE<br>Mar 07   | SCALE<br>1"=20'                           | BAUGHMAN NO<br>99-09-E451 |
| LANDSCAPE PLAN - SEGMENT 2   |              |                          | STA 46+00 TO STA 52+00<br>HYDRAULIC AVE PAVING - SOUTH OF 57th STREET SOUTH TO 47th STREET SOUTH |   |                           |
| CITY OF WICHITA<br>C-531-UP  |              |                          | KIPPENBERGER - GRIFFIN<br>PARTNERSHIP<br>C - 49859   |   |                           |

**BAUGHMAN COMPANY, P.A.**  
ENGINEERING, SURVEYING, & PLANNING  
316-262-7271 • 315 ELLIS • WICHITA, KANSAS 67211

SHEET 11 OF 30