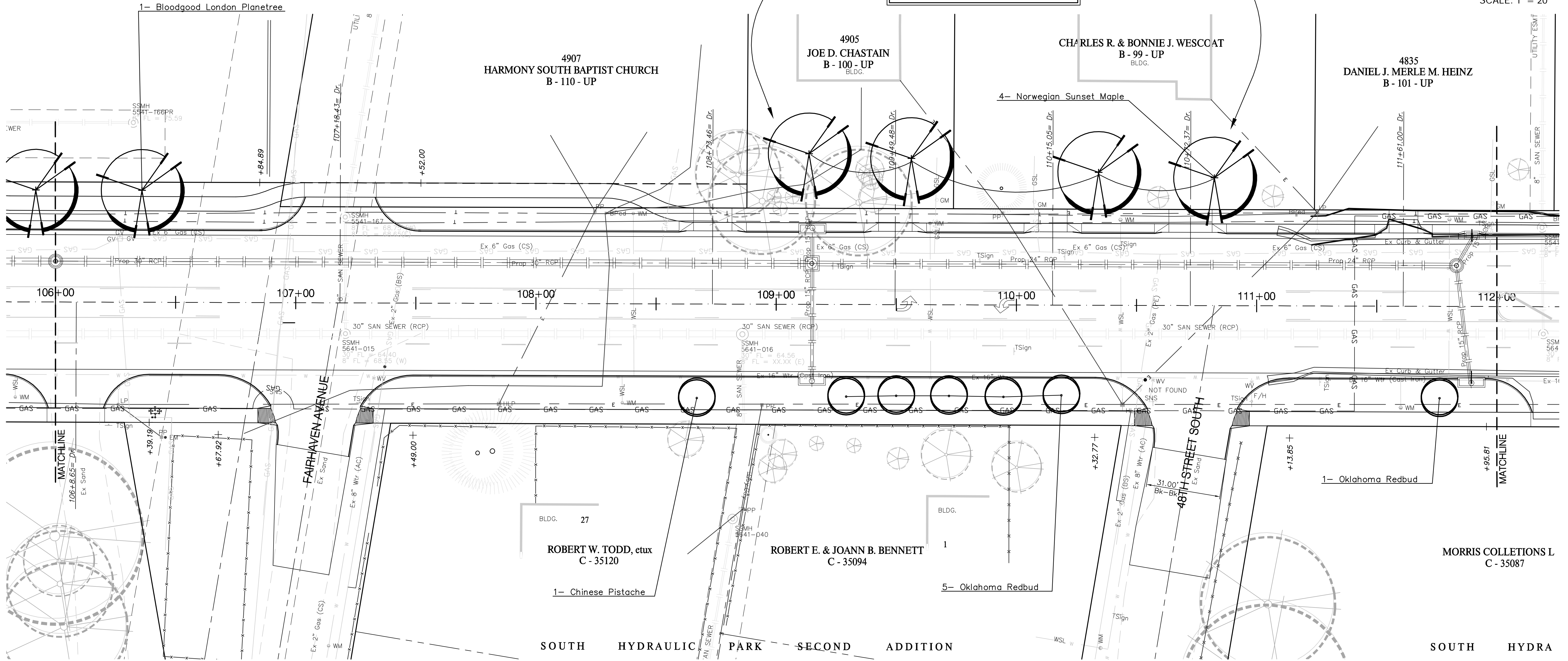
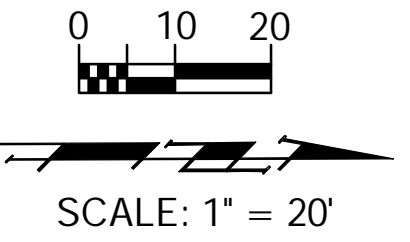


**BENCHMARKS:**

BM #8 - City of Wichita Bench Mark Disc Top of Hub Guard East Side of Hydraulic @ RCB (Riverside Drainage District Canal) 15.76' East of CenterLine of Hydraulic. Sta. 46+51.9, 15.7' Rt. Elev. = 77.73 (City Datum)

NOTE: These four (4) Norwegian Sunset Maples are located on private property and are to be planted on said properties per an agreement between the City of Wichita and the landowner. Contact Julianne Kallman at 268-4448 for more information.



**PLANT SCHEDULE-This sheet only**

QTY	BOTANICAL NAME	COMMON NAME	SIZE	CONDITION	REMARKS
<b>LARGE SHADE TREES</b>					
4	<i>Acer truncatum x platanoides 'keithsform'</i>	Norwegian Sunset Maple	2" Cal.	B&B	Single Stem Only
1	<i>Platanus x acerfolia 'Bloodgood'</i>	Bloodgood London Planetree	2" Cal.	B&B	Single Stem Only
<b>ORNAMENTAL TREES</b>					
6	<i>Cercis reniformis 'Oklahoma'</i>	Oklahoma Redbud	2" Cal.	B&B	Single Stem Only
1	<i>Pistacia chinensis</i>	Chinese Pistache	2" Cal.	B&B	Single Stem Only

Call Before You Dig  
 1-800-DIG SAFE  
 or 687-2470 in Wichita  
 Call Kansas One-Call at Least Two (2) Working Days Before Work Begins

PROJECT NUMBER 472-84118a		SHEET NAME Phase2 LS		ENGINEERING DIRECTORY E:\Hydraulic.LS\	
DESIGN BDT	DRAWN BDT	APPROVED BDT/PJM	DATE Mar 07	SCALE 1"=20'	BAUGHMAN NO 99-09-E451

STA 106+00 TO STA 112+00  
**LANDSCAPE PLAN - SEGMENT 2**  
 HYDRAULIC AVE PAVING - SOUTH OF 57th STREET SOUTH TO 47th STREET SOUTH

**BAUGHMAN COMPANY, P.A.**  
 ENGINEERING, SURVEYING, & PLANNING  
 316-262-7271 \* 315 ELLIS \* WICHITA, KANSAS 67211

SHEET 21 OF 30