

**CONTROL POINTS**

- C.P. #23 N-1692950.261, E-1601756.502  
#4 Bar 17' North and 206' West of 135th Street West and 13th Street North  
96.30' East to PK Nail in South Face of Power Pole  
117.67' West-SouthWest to PK Nail in North Face of Power Pole  
154.54' West to PK Nail in South Face of Power Pole
- C.P. #25 N-1691565.692, E-1601948.980  
#4 Bar West of 135th Street West and 1/4 Mile South of 13th Street North  
56.52' East to PK Nail in South Face of Power Pole  
106.24' South to PK Nail in East Face of Power Pole  
192.50' North to PK Nail in East Face of Power Pole
- C.P. #27 N-1690284.336, E-1602250.802  
#4 Bar 250' East of Centerline of 135th Street West and 1/2 Mile South of 13th Street North  
40' North to East-West Tree Row
- C.P. #43 N-1693014.753, E-1604589.749  
3/4" Iron Pipe at South 1/4 Corner of Section 12, TWP 27 S, R 2 W.
- C.P. #44 N-1693355.798, E-1606956.420  
3/4" Iron Pipe in Thimble at South East Corner of Section 12, TWP 27 S, R 2 W
- C.P. #45 N-1690675.916, E-1604750.1640  
#4 Bar in Grass Cul-de-sac of 1100 Azure Lane
- C.P. #46 N-1690477.639, E-1607249.634  
#4 Bar in Thimble at the SE Corner of the NE 1/4 of Section 13, TWP 27 S, R 2 W

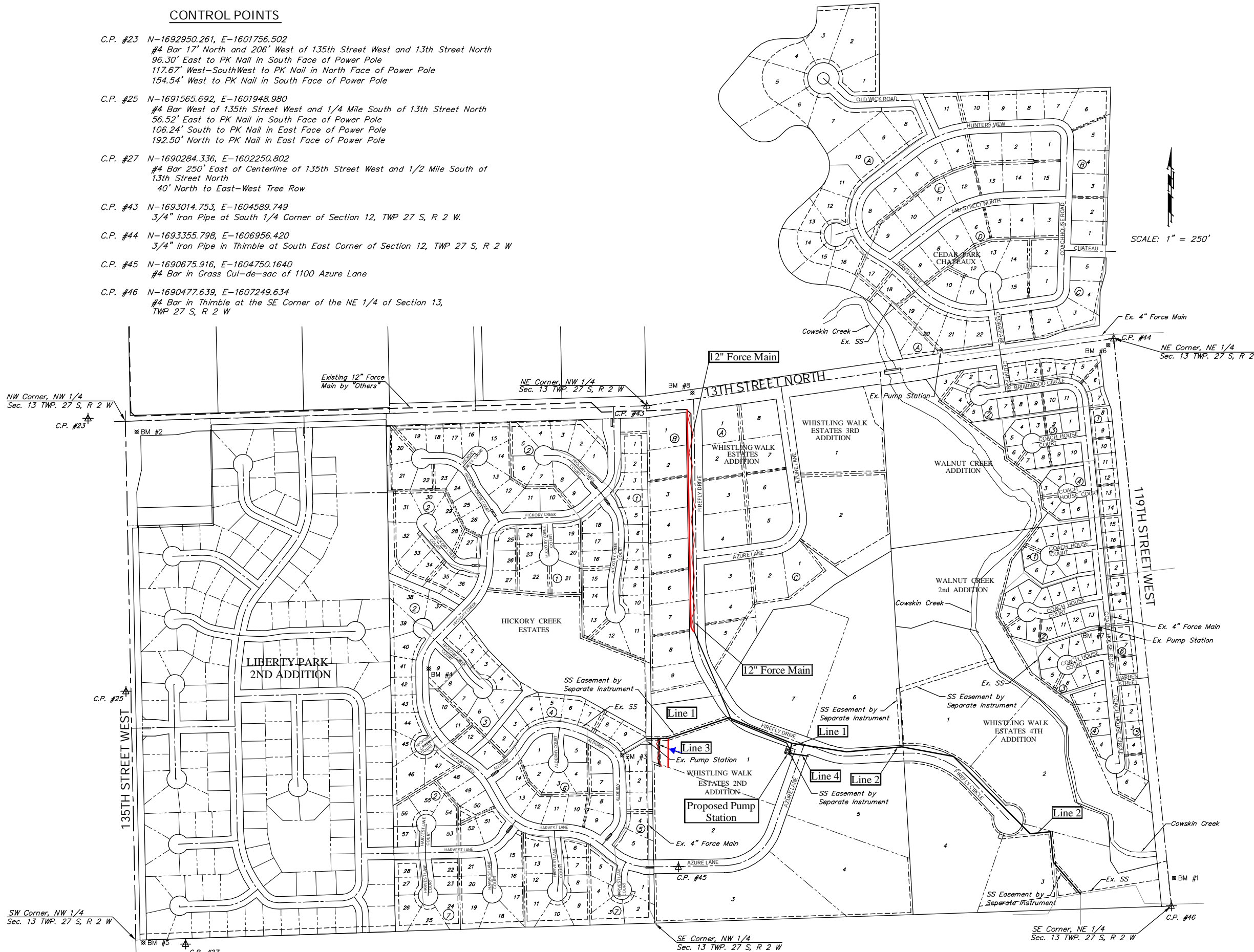
**BENCHMARKS**

- BM #1 - City of Wichita Disc @ 119th Street West & Cowskin Creek Bridge, Located on the SE Corner at Top of Hubguard Elev. = 1339.22 (MSL Datum)
- BM #2 - City of Wichita Disc @ SE Corner of 135th Street West & 13th Street North, 56' S and 55' E of C. of Both. Elev. = 1355.23 (MSL Datum)
- BM #3 - "C" Cut on South Edge of Concrete Entrance to Lift Station, 0.5'± East of East Edge of Manhole Adjacent to Northwest Corner of Lot 1, Block 5 in the Hickory Creek Addition. Elev. = 1343.00 (MSL Datum)
- BM #4 - "C" Cut on Top of Curb at PC on Hickory Creek at East Side of Lot 9, Block 3, Hickory Creek Addition. Elev. = 1349.61 (MSL Datum)
- BM #5 - City of Wichita Disc @ 135th Street West & 1/2 Mile South of 13th Street North, 39.00' E of CL of 135th Street West 18.00' S of East-West Hedge Row Elev. = 1347.11 (MSL Datum)
- BM #6 - City of Wichita Disc @ the SW Corner of 119th Street West & 13th Street North Elev. = 1349.59 (MSL Datum)
- BM #7 - "C" Cut on the Top of Curb in the NE Corner of Lot 1, Block 3 of the Walnut Creek 2nd Addition Elev. = 1336.35 (MSL Datum)
- BM #8 - City of Wichita Disc @ 13th Street North & Firefly Drive, 38.5' N of C. of 13th Street North @ the C. of Firefly Drive Elev. = 1332.92 (MSL Datum)

**LIST OF UTILITY COMPANIES**

Contractor will be required to provide a minimum advance notice of forty-eight (48) hours to utility companies prior to excavation or working adjacent to utilities.

TYPE	OWNER	PHONE #
Notifier Service	Kansas One-Call	687-2470
TV	Cox Communications	262-0661
Electric	Westar Energy	383-8650
Gas	Kansas Gas Service	832-3169
Gas	Aquila	942-0096
Telephone	Southwestern Bell Telephone Company	268-2245
Water	City of Wichita Water Department	268-4563
Sewer	City of Wichita Sewer Maintenance	268-4024



PROJECT NUMBER 468-83136		SHEET NAME KEYSHEET		ENGINEERING DIRECTORY F:\IN\PLANT	
DESIGN TPV	DRAWN STAFF	APPROVED JFB	DATE April 2002	SCALE NOTED	BAUGHMAN NO 00-08-E789

MAIN 5 OF THE NW INTERCEPTOR SEWER, PHASE 2  
**KEYSHEET**  
NORTHWEST TREATMENT PLANT COLLECTION SYSTEM IMPROVEMENTS

**BAUGHMAN COMPANY, P.A.**  
ENGINEERING, SURVEYING, & PLANNING  
316-262-7271 • 315 ELLIS • WICHITA, KANSAS 67211