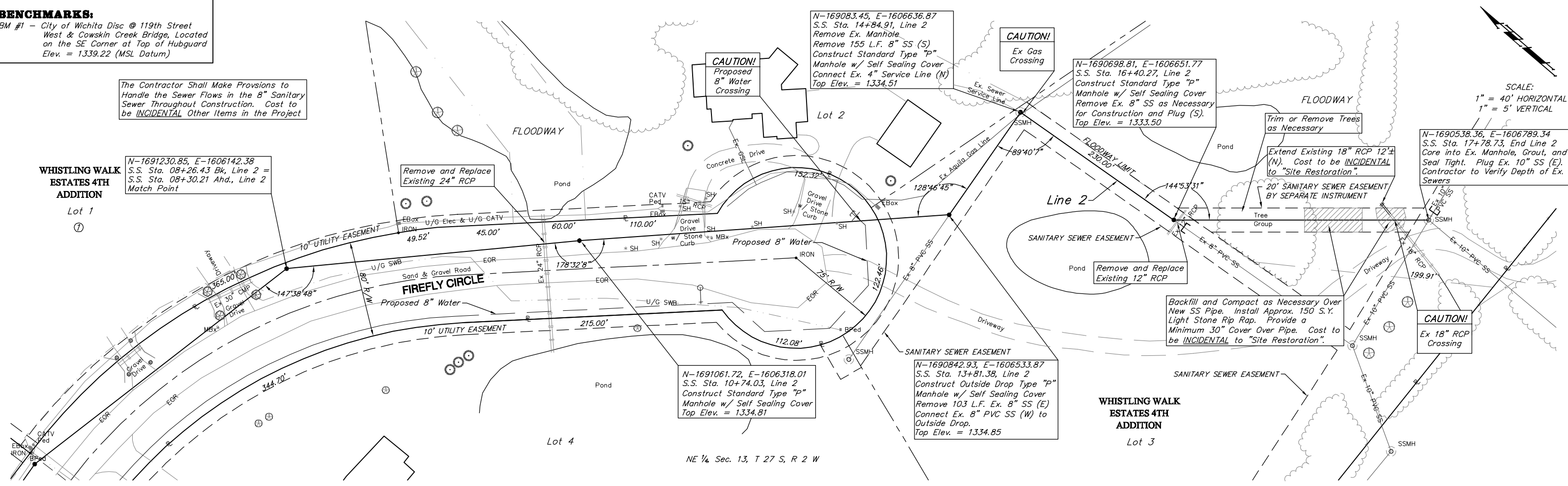


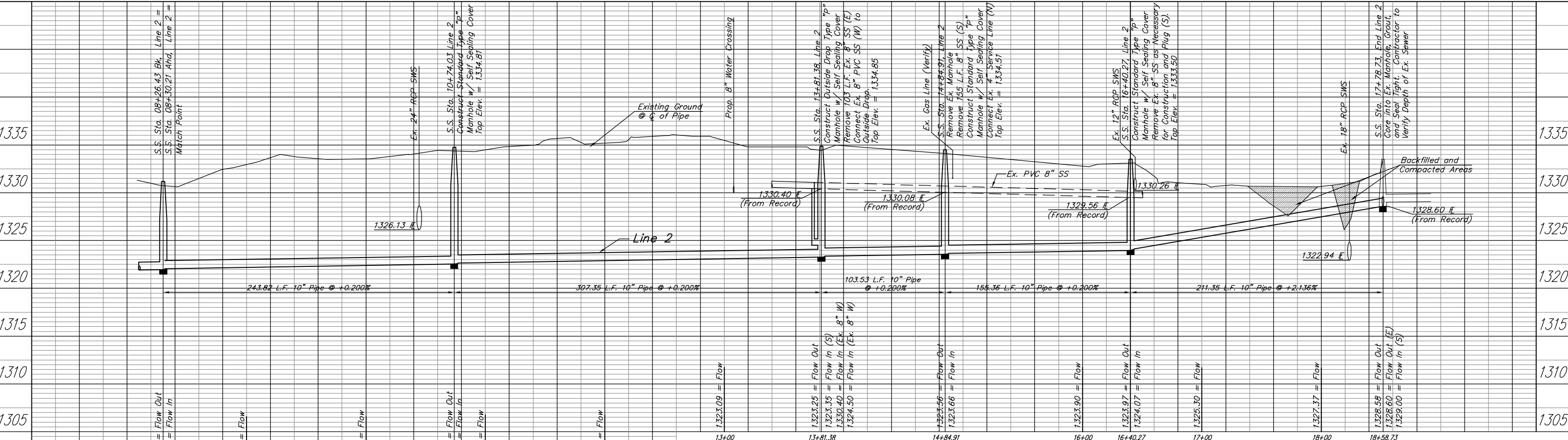
BENCHMARKS:
 BM #1 - City of Wichita Disc @ 119th Street
 West & Cowskin Creek Bridge, Located
 on the SE Corner at Top of Hubguard
 Elev. = 1339.22 (MSL Datum)

The Contractor Shall Make Provisions to
 Handle the Sewer Flows in the 8" Sanitary
 Sewer Throughout Construction. Cost to
 be INCIDENTAL Other Items in the Project

**WHISTLING WALK
 ESTATES 4TH
 ADDITION**
 Lot 1
 ①



SCALE:
 1" = 40' HORIZONTAL
 1" = 5' VERTICAL



PROJECT NUMBER 468-83136		SHEET NAME SS02b		ENGINEERING DIRECTORY FWNW PLANT/SS	
DESIGN TPV	DRAWN STAFF	APPROVED JFP	DATE April 2002	SCALE NOTED	BAUGHMAN NO 00 09 F799

MAIN 5 OF THE NW INTERCEPTOR SEWER, PHASE 2
LINE 2

BAUGHMAN COMPANY, P.A.
 ENGINEERING, SURVEYING, & PLANNING
 212 E. 22ND ST. • 212 E. ELLIS • WICHITA, KANSAS 67211

SHEET
6
 OF
19